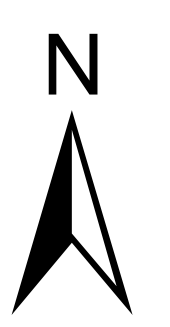
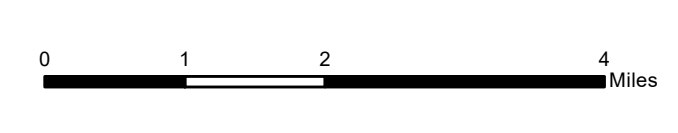
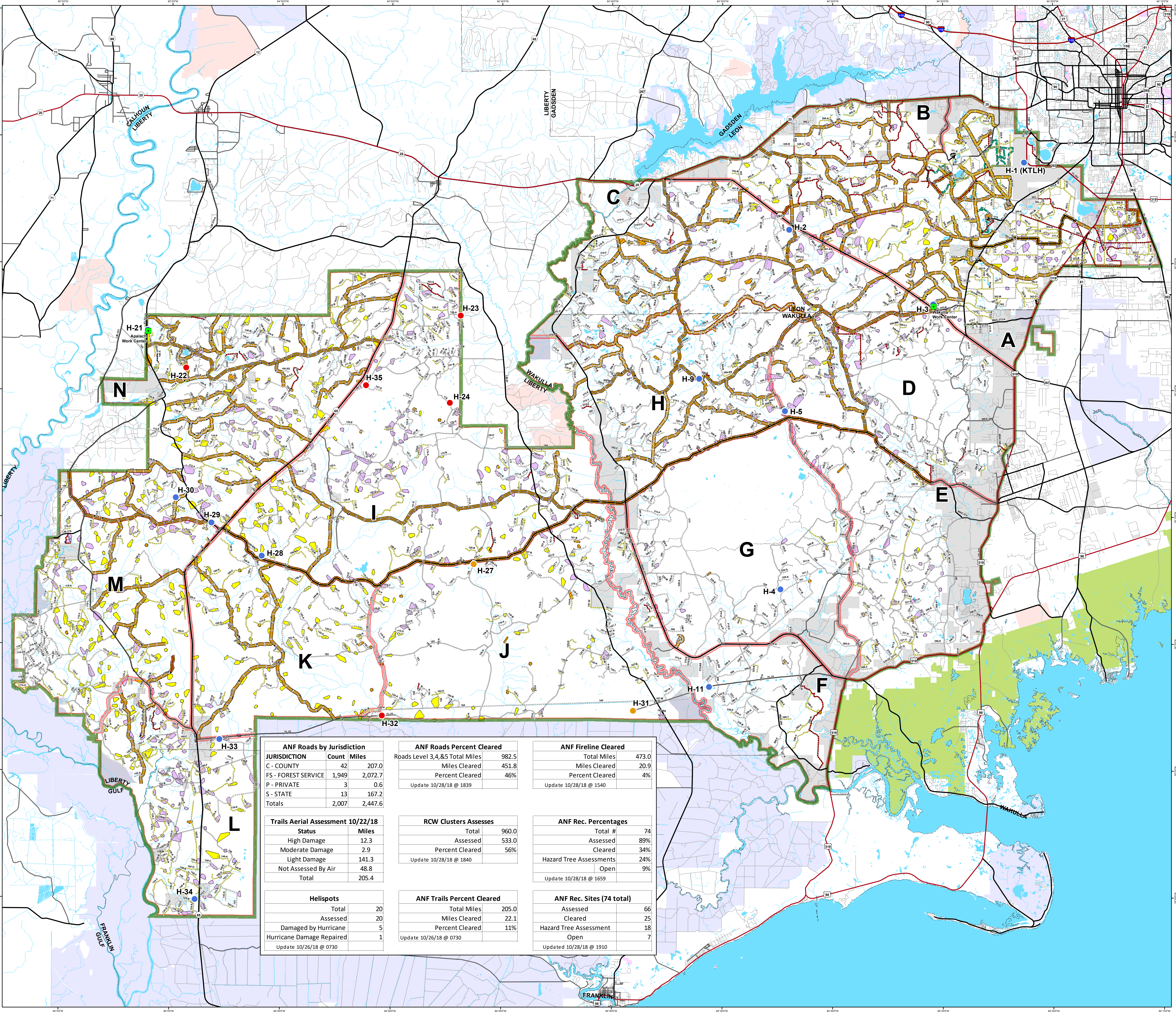


**Apalachicola National Forest
Hurricane Michael
Response
FL-FNF-018011
Wildlife Group
10/29/18**



- Major Roads**
- Interstate
 - Principal Arterial
 - Major Collector
 - Minor Arterial
 - Minor Collector
 - Local
- Forest Roads**
- 5 - High Degree Of User Comfort
 - 4 - Moderate Degree Of User Comfort
 - 3 - Suitable For Passenger Cars
 - 2 - High Clearance Vehicles (Admin Only)
 - 2 - High Clearance Vehicles (Admin Only)
 - 1 - Basic Custodial Care (Closed)
 - Forest Road Cleared
 - Trails
 - Trail Cleared
 - County Road
- Helispots**
- Ready for Air Operations
 - Not Ready for Air Operations
 - Not Ready Hurricane Michael Impacts
- RCW Cluster Assessment**
- RCW Assessment complete
 - RCW Assessment not complete
 - Other RCW Cluster
 - Work_Center
 - ANF Inholdings Unofficial
 - Emergency Response Divisions
 - Forest Boundary (Unofficial)
 - County Boundary (Florida)
- OWNER**
- USFWS
 - Local
 - Private
 - State



ANF Roads by Jurisdiction		ANF Roads Percent Cleared		ANF Fireline Cleared	
JURISDICTION	Count Miles	Roads Level 3,4,&5 Total Miles	Miles Cleared	Total Miles	Miles Cleared
C - COUNTY	42 207.0	982.5	451.8	473.0	20.9
FS - FOREST SERVICE	1,949 2,072.7		46%		4%
P - PRIVATE	3 0.6				
S - STATE	13 167.2				
Totals	2,007 2,447.6				

Trails Aerial Assessment 10/22/18		RCW Clusters Assesses		ANF Rec. Percentages	
Status	Miles	Total	Assessed	Total #	Assessed
High Damage	12.3	960.0	533.0	74	89%
Moderate Damage	2.9		56%		34%
Light Damage	141.3				24%
Not Assessed By Air	48.8				9%
Total	205.4				

Helispots		ANF Trails Percent Cleared		ANF Rec. Sites (74 total)	
Total	Assessed	Total Miles	Miles Cleared	Assessed	Cleared
20	20	205.0	22.1	66	25
	Damaged by Hurricane		11%		18
	Hurricane Damage Repaired				7
	Update 10/26/18 @ 0730				Updated 10/28/18 @ 1910

This map was produced by the SA Red Team GIS on 10/28/2018 at 1530 Hours.
Data Projection: NAD_1983_StatePlane_Florida_North_FIPS_0003_Feet

