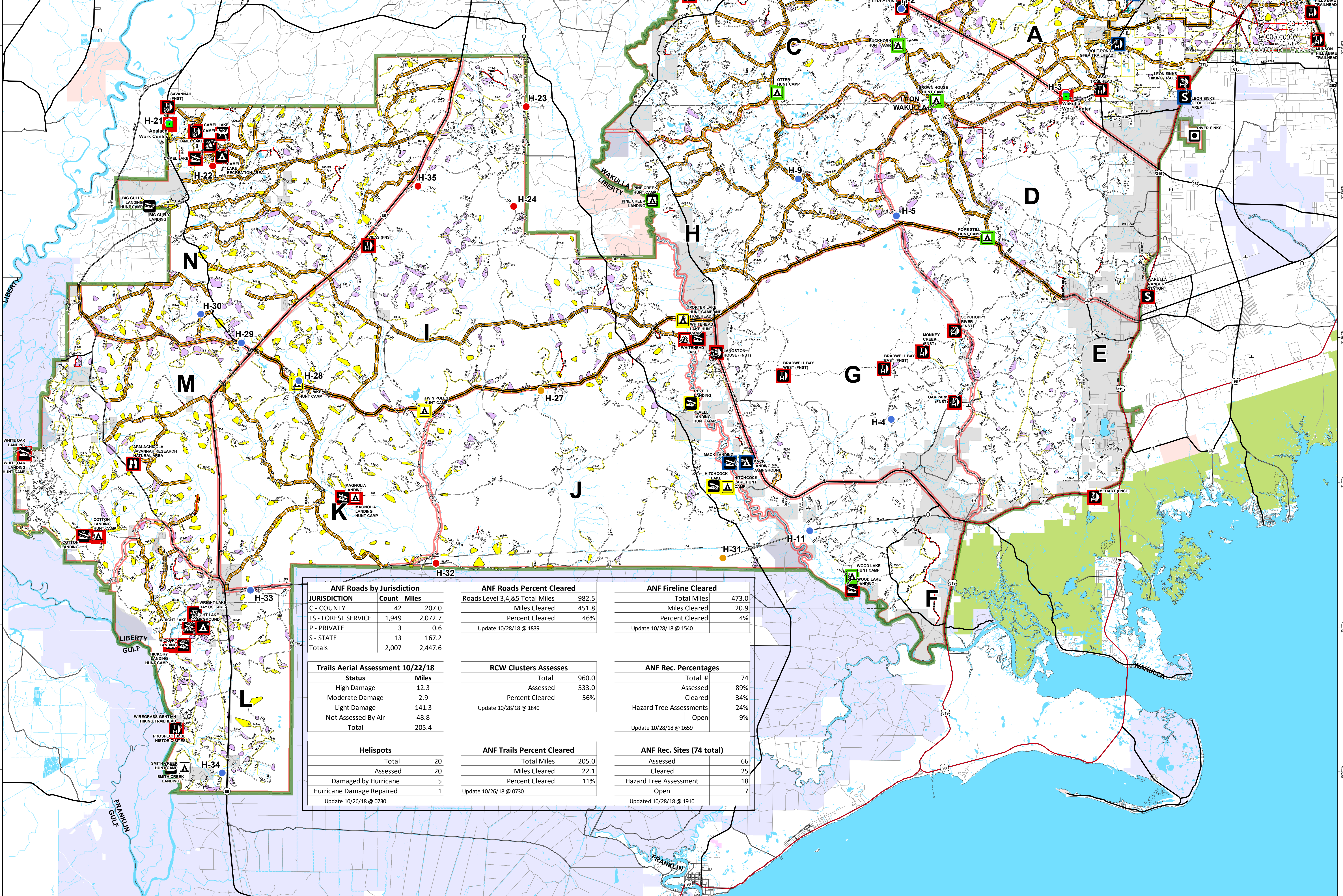
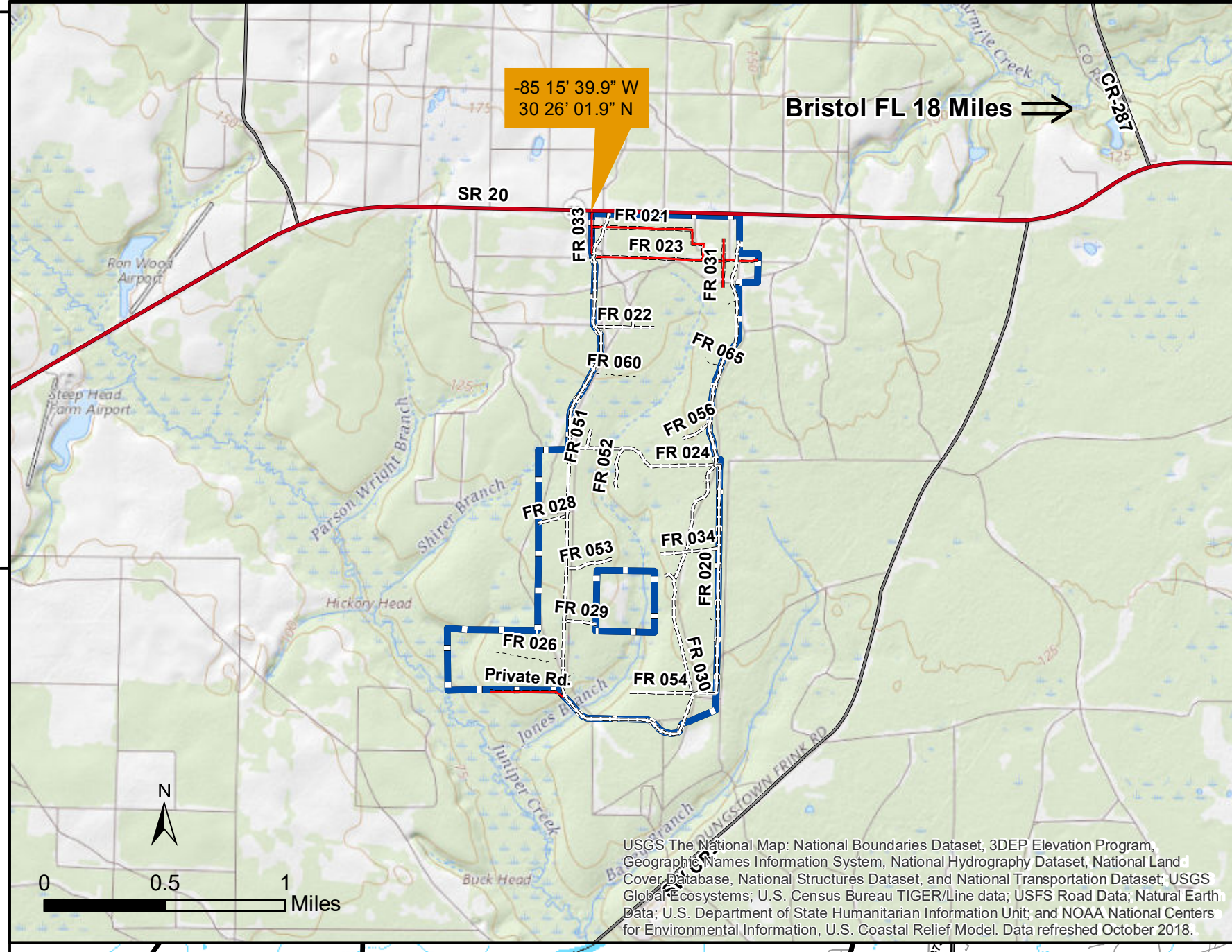
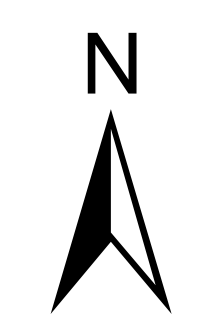
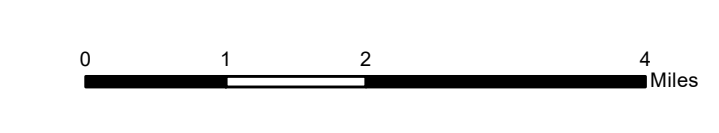


# Apalachicola National Forest Hurricane Michael Response

## FL-FNF-018011 Briefing Map

10/29/18



ANF Roads by Jurisdiction		ANF Roads Percent Cleared		ANF Fireline Cleared	
JURISDICTION	Count	Miles	Roads Level 3,4,&5 Total Miles	Total Miles	Total Miles
C - COUNTY	42	207.0	982.5	473.0	473.0
FS - FOREST SERVICE	1,949	2,072.7	451.8	20.9	20.9
P - PRIVATE	3	0.6	46%	4%	4%
S - STATE	13	167.2			
<b>Totals</b>	<b>2,007</b>	<b>2,447.6</b>			

Trails Aerial Assessment 10/22/18		RCW Clusters Assesses		ANF Rec. Percentages	
Status	Miles	Total	Total	Total #	Total #
High Damage	12.3	960.0	960.0	74	74
Moderate Damage	2.9	533.0	533.0	Assessed	89%
Light Damage	141.3	56%	56%	Cleared	34%
Not Assessed By Air	48.8			Hazard Tree Assessments	24%
<b>Total</b>	<b>205.4</b>			Open	9%

Helispots		ANF Trails Percent Cleared		ANF Rec. Sites (74 total)	
Total	Assessed	Total Miles	Total Miles	Assessed	Total
20	20	205.0	205.0	66	66
Damaged by Hurricane	5	22.1	22.1	Cleared	25
Hurricane Damage Repaired	1	11%	11%	Hazard Tree Assessment	18
				Open	7

- Rec Site**
- Boating Site
  - Campground
  - Camping Area
  - Day Use Area
  - Fishing Site
  - Info Site/Fee Station
  - Observation Site
  - Picnic Site
  - Swimming Site
  - Target Range
  - Trailhead
  - Wildlife Viewing Site
- Rec Site Assessment**
- Assessed
  - Assessed & Cleared
  - Assessed, Cleared & Hazard Trees Assessed
  - Open
- Major Roads**
- Interstate
  - Principal Arterial
  - Major Collector
  - Minor Arterial
  - Minor Collector
  - Local
- Forest Roads**
- 5 - High Degree Of User Comfort
  - 4 - Moderate Degree Of User Comfort
  - 3 - Suitable For Passenger Cars
  - 2 - High Clearance Vehicles
  - 2 - High Clearance Vehicles (Admin Only)
  - 1 - Basic Custodial Care (Closed)
  - Forest Road Cleared
  - (XXX) Fireline Cleared
  - Trails
  - Trail Cleared
  - County Road
- Helispots**
- Ready for Air Operations
  - Not Ready for Air Operations
  - Not Ready Hurricane Michael Impacts
- RCW Cluster Assessment**
- RCW Assessment complete
  - RCW Assessment not complete
  - Work\_Center
  - ANF Inholdings Unofficial
  - Emergency Response Divisions
  - Forest Boundary (Unofficial)
  - County Boundary (Florida)
- OWNER**
- USFWS
  - Local
  - Private
  - State

This map was produced by the SA Red Team GIS on 10/26/2018 at 1536 Hours.  
 Data Projection: NAD\_1983\_StatePlane\_Florida\_North\_FIPS\_0903\_Feet

