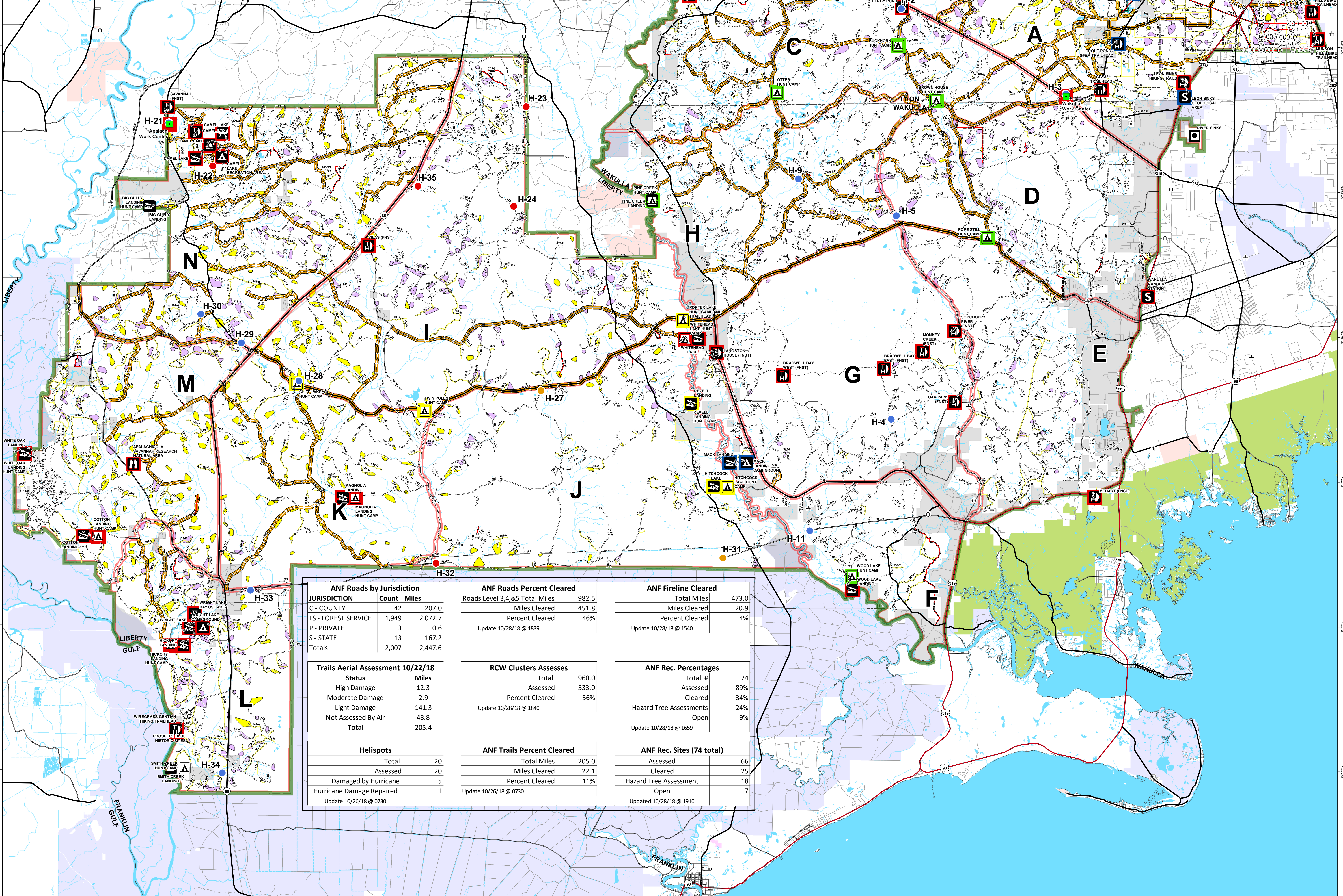
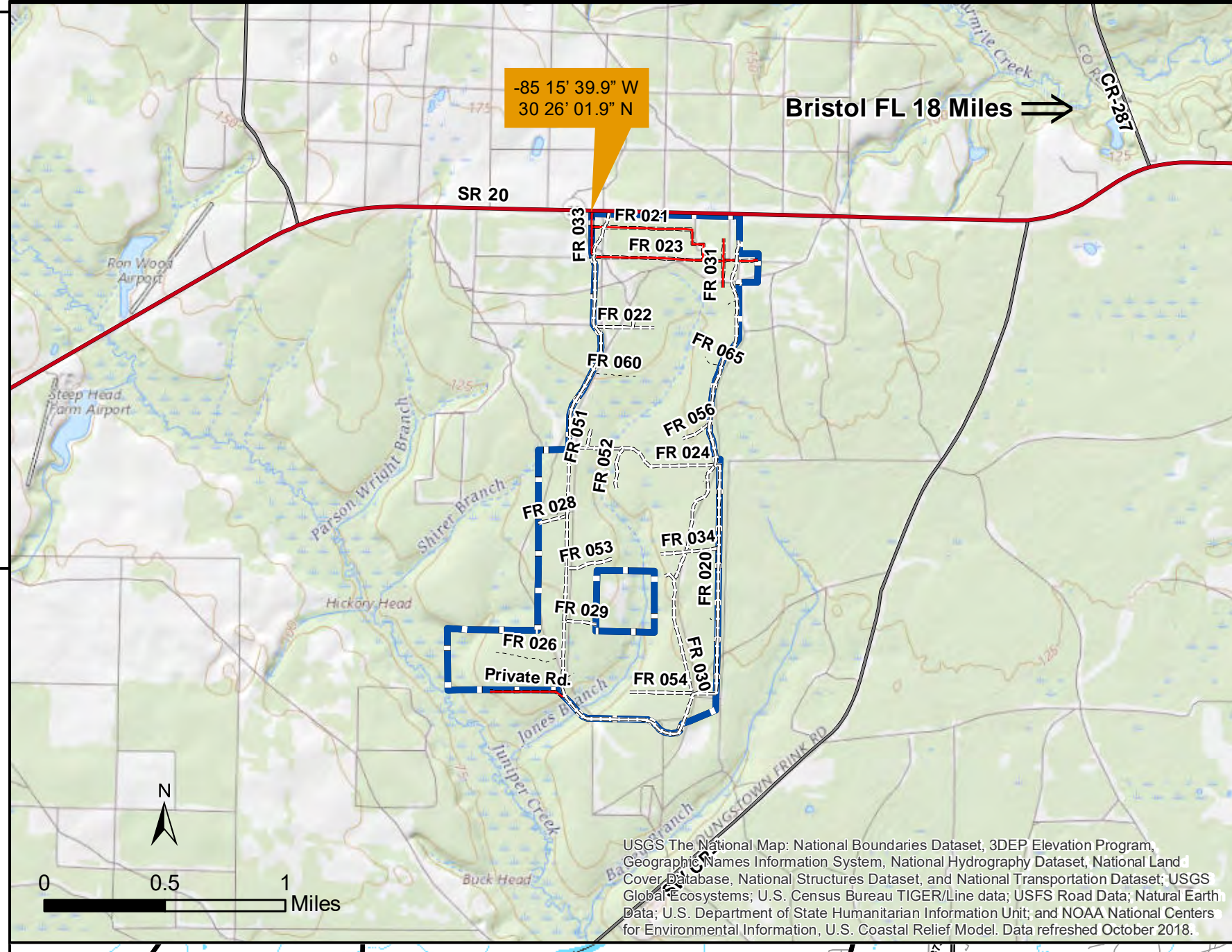
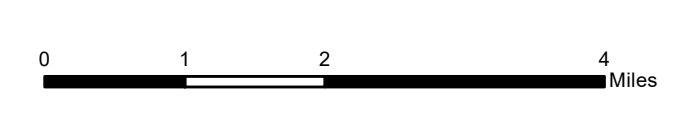


Apalachicola National Forest Hurricane Michael Response FL-FNF-018011 Briefing Map 10/29/18



ANF Roads by Jurisdiction		ANF Roads Percent Cleared		ANF Fireline Cleared	
JURISDICTION	Count Miles	Roads Level 3,4,&5 Total Miles	982.5	Total Miles	473.0
C - COUNTY	42 207.0	Miles Cleared	451.8	Miles Cleared	20.9
FS - FOREST SERVICE	1,949 2,072.7	Percent Cleared	46%	Percent Cleared	4%
P - PRIVATE	3 0.6				
S - STATE	13 167.2				
Totals	2,007 2,447.6				

Trails Aerial Assessment 10/22/18		RCW Clusters Assesses		ANF Rec. Percentages	
Status	Miles	Total	960.0	Total #	74
High Damage	12.3	Assessed	533.0	Assessed	89%
Moderate Damage	2.9	Percent Cleared	56%	Cleared	34%
Light Damage	141.3			Hazard Tree Assessments	24%
Not Assessed By Air	48.8			Open	9%
Total	205.4				

Helispots		ANF Trails Percent Cleared		ANF Rec. Sites (74 total)	
Total	20	Total Miles	205.0	Assessed	66
Assessed	20	Miles Cleared	22.1	Cleared	25
Damaged by Hurricane	5	Percent Cleared	11%	Hazard Tree Assessment	18
Hurricane Damage Repaired	1			Open	7

- Rec Site**
- Boating Site
 - Campground
 - Camping Area
 - Day Use Area
 - Fishing Site
 - Info Site/Fee Station
 - Observation Site
 - Picnic Site
 - Swimming Site
 - Target Range
 - Trailhead
 - Wildlife Viewing Site
- Rec Site Assessment**
- Assessed
 - Assessed & Cleared
 - Assessed, Cleared & Hazard Trees Assessed
 - Open
- Major Roads**
- Interstate
 - Principal Arterial
 - Major Collector
 - Minor Arterial
 - Minor Collector
 - Local
- Forest Roads**
- 5 - High Degree Of User Comfort
 - 4 - Moderate Degree Of User Comfort
 - 3 - Suitable For Passenger Cars
 - 2 - High Clearance Vehicles
 - 2 - High Clearance Vehicles (Admin Only)
 - 1 - Basic Custodial Care (Closed)
 - Forest Road Cleared
 - (XXX) Fireline Cleared
 - Trails
 - Trail Cleared
 - County Road
- Helispots**
- Ready for Air Operations
 - Not Ready for Air Operations
 - Not Ready Hurricane Michael Impacts
- RCW Cluster Assessment**
- RCW Assessment complete
 - RCW Assessment not complete
 - Work_Center
 - ANF Inholdings Unofficial
 - Emergency Response Divisions
 - Forest Boundary (Unofficial)
 - County Boundary (Florida)
 - OWNER
 - USFWS
 - Local
 - Private
 - State

This map was produced by the SA Red Team GIS on 10/26/2018 at 1536 Hours.
Data Projection: NAD_1983_StatePlane_Florida_North_FIPS_0903_Feet

