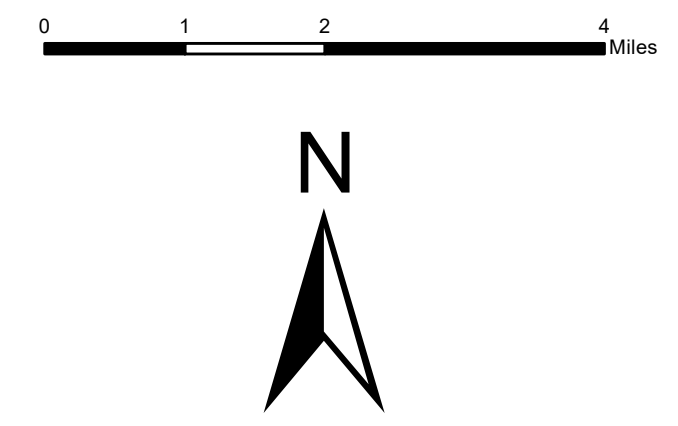
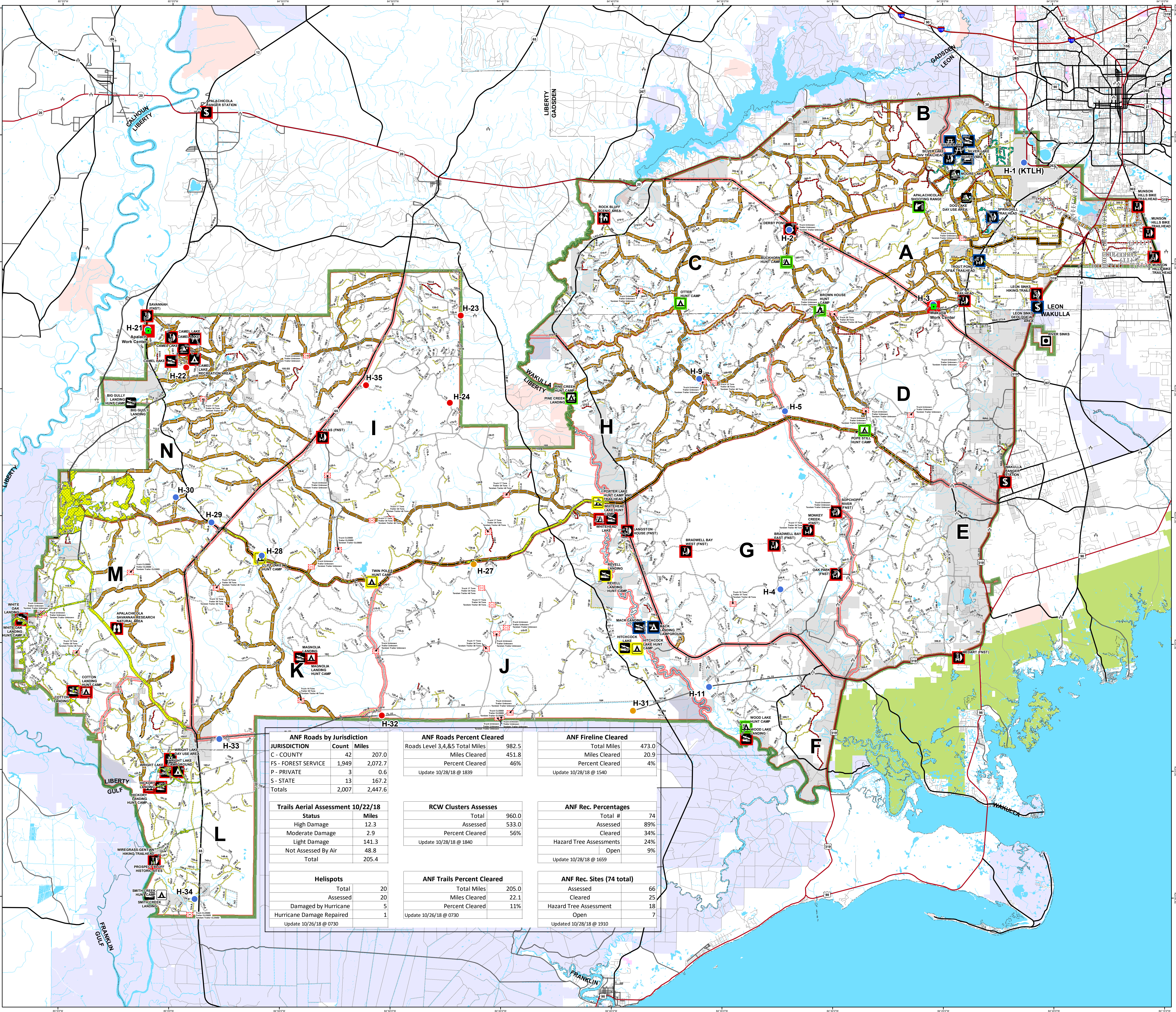


**Apalachicola National Forest
Hurricane Michael
Response
FL-FNF-018011
Operations Map
10/29/18**



- Rec Site**
- Boating Site
- Campground
- Camping Area
- Day Use Area
- Fishing Site
- Info Site/Fee Station
- Observation Site
- Picnic Site
- Swimming Site
- Target Range
- Trailhead
- Wildlife Viewing Site
- Rec Site Assessment**
- Assessed
- Assessed & Cleared
- Assessed, Cleared & Hazard Trees Assessed
- Open
- Invasive Species
- Major Roads**
- Interstate
- Principal Arterial
- Major Collector
- Minor Arterial
- Minor Collector
- Local
- Forest Roads**
- 5 - High Degree Of User Comfort
- 4 - Moderate Degree Of User Comfort
- 3 - Suitable For Passenger Cars
- 2 - High Clearance Vehicles
- 2 - High Clearance Vehicles (Admin Only)
- 1 - Basic Custodial Care (Closed)
- Forest Road Cleared
- Fireline Cleared
- Trails
- Trail Cleared
- County Road
- Helispots**
- Ready for Air Operations
- Not Ready for Air Operations
- Not Ready Hurricane Michael Impacts
- Work_Center
- ANF Inholdings Unofficial
- Emergency Response Divisions
- Forest Boundary (Unofficial)
- County Boundary (Florida)
- OWNER**
- USFWS
- Local
- Private
- State



ANF Roads by Jurisdiction		ANF Roads Percent Cleared		ANF Fireline Cleared	
JURISDICTION	Count	Miles	Roads Level 3,4,&5 Total Miles	Total Miles	Total Miles
C - COUNTY	42	207.0	982.5	473.0	473.0
FS - FOREST SERVICE	1,949	2,072.7	451.8	20.9	20.9
P - PRIVATE	3	0.6	46%	4%	4%
S - STATE	13	167.2			
Totals	2,007	2,447.6			

Trails Aerial Assessment 10/22/18		RCW Clusters Assesses		ANF Rec. Percentages	
Status	Miles	Total	Total	Total #	Total #
High Damage	12.3	960.0	960.0	74	74
Moderate Damage	2.9	533.0	56%	Assessed	89%
Light Damage	141.3			Cleared	34%
Not Assessed By Air	48.8			Hazard Tree Assessments	24%
Total	205.4			Open	9%

Helispots		ANF Trails Percent Cleared		ANF Rec. Sites (74 total)	
Total	Assessed	Total Miles	Total Miles	Assessed	Total Miles
20	20	205.0	205.0	66	66
Damaged by Hurricane	5	22.1	22.1	Cleared	25
Hurricane Damage Repaired	1	11%	11%	Hazard Tree Assessment	18
				Open	7

This map was produced by the SA Red Team GIS on 10/26/2018 at 1534 Hours.
Data Projection: NAD_1983_StatePlane_Florida_North_FIPS_0903_Feet

