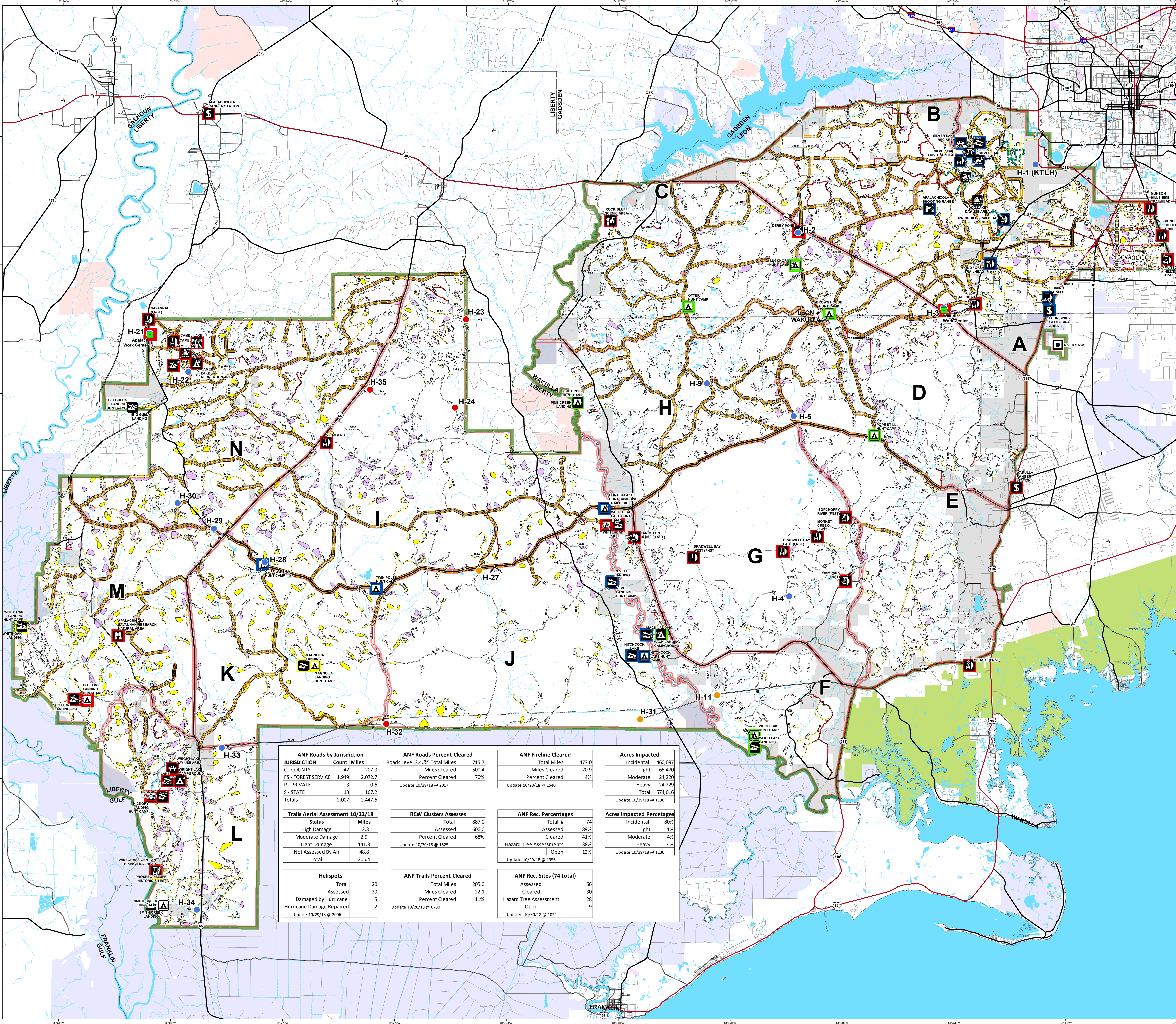


**Apalachicola National Forest
Hurricane Michael
Response
FL-FNF-018011
Current Status
Map
10/30/18**



0 1 2 Miles



- Rec Site**
- Boating Site
 - Campground
 - Camping Area
 - Day Use Area
 - Fishing Site
 - Info Site/Fee Station
 - Observation Site
 - Picnic Site
 - Swimming Site
 - Target Range
 - Trailhead
 - Wildlife Viewing Site
- Rec Site Assessment**
- Assessed
 - Assessed & Cleared
 - Assessed, Cleared & Hazard Trees Assessed
 - Open
- Major Roads**
- Interstate
 - Principal Arterial
 - Major Collector
 - Minor Arterial
 - Minor Collector
 - Local
- Forest Roads**
- 5 - High Degree of User Comfort
 - 4 - Moderate Degree of User Comfort
 - 3 - Suitable For Passenger Cars
 - 2 - High Clearance Vehicles
 - 2 - High Clearance Vehicles (Admin Only)
 - 1 - Basic Custodial Care (Closed)
 - Forest Road Cleared
- Trails**
- Trails
 - Trail Cleared
 - County Road
- Helispots**
- Ready for Air Operations
 - Not Ready for Air Operations
 - Not Ready Hurricane Michael Impacts
- RCW Cluster Assessment**
- RCW Assessment complete
 - RCW Assessment not complete
 - Work Center
 - ANF Inholdings Unofficial
 - Emergency Response Divisions
 - Forest Boundary (Unofficial)
 - County Boundary (Florida)
- OWNER**
- USFWS
 - Local
 - Private
 - State

ANF Roads by Jurisdiction		ANF Roads Percent Cleared		ANF Fireline Cleared		Acres Impacted	
JURISDICTION	Count Miles	Roads Level 3,4,&5 Total Miles	Miles Cleared	Total Miles	Miles Cleared	Incidental	Light
C - COUNTY	42 207.0	715.7	20.9	473.0	20.9	460,097	65,470
FS - FOREST SERVICE	1,949 2,072.7	500.4	70%		4%		24,229
P - PRIVATE	3 0.6						24,229
S - STATE	13 167.2						574,016
Totals	2,007 2,447.6						
Update 10/29/18 @ 1526		Update 10/29/18 @ 1540		Update 10/29/18 @ 1540		Update 10/29/18 @ 1130	

Trails Aerial Assessment 10/22/18		RCW Clusters Assesses		ANF Rec. Percentages		Acres Impacted Percentages	
Status	Miles	Total	Assessed	Total #	Assessed	Incidental	80%
High Damage	12.3	887.0	606.0	74	89%	Light	11%
Moderate Damage	2.9	606.0	68%		41%	Moderate	4%
Light Damage	141.3				38%	Heavy	4%
Not Assessed By Air	48.8				12%		
Total	205.4						
Update 10/29/18 @ 0730		Update 10/26/18 @ 0730		Update 10/29/18 @ 1024		Update 10/29/18 @ 1130	

Helispots		ANF Trails Percent Cleared		ANF Rec. Sites (74 total)	
Total	20	Total Miles	205.0	Assessed	66
Damaged	20	Miles Cleared	22.1	Cleared	30
Assessed	20	Percent Cleared	11%	Hazard Tree Assessment	28
Damaged by Hurricane	5			Open	9
Hurricane Damage Repaired	2				
Update 10/29/18 @ 2006		Update 10/26/18 @ 0730		Updated 10/30/18 @ 1024	

This map was produced by the SA Red Team GIS on 10/30/2018 at 1526 Hours.
Data Projection: NAD_1983_StatePlane_Florida_North_FIPS_0003_Feet

