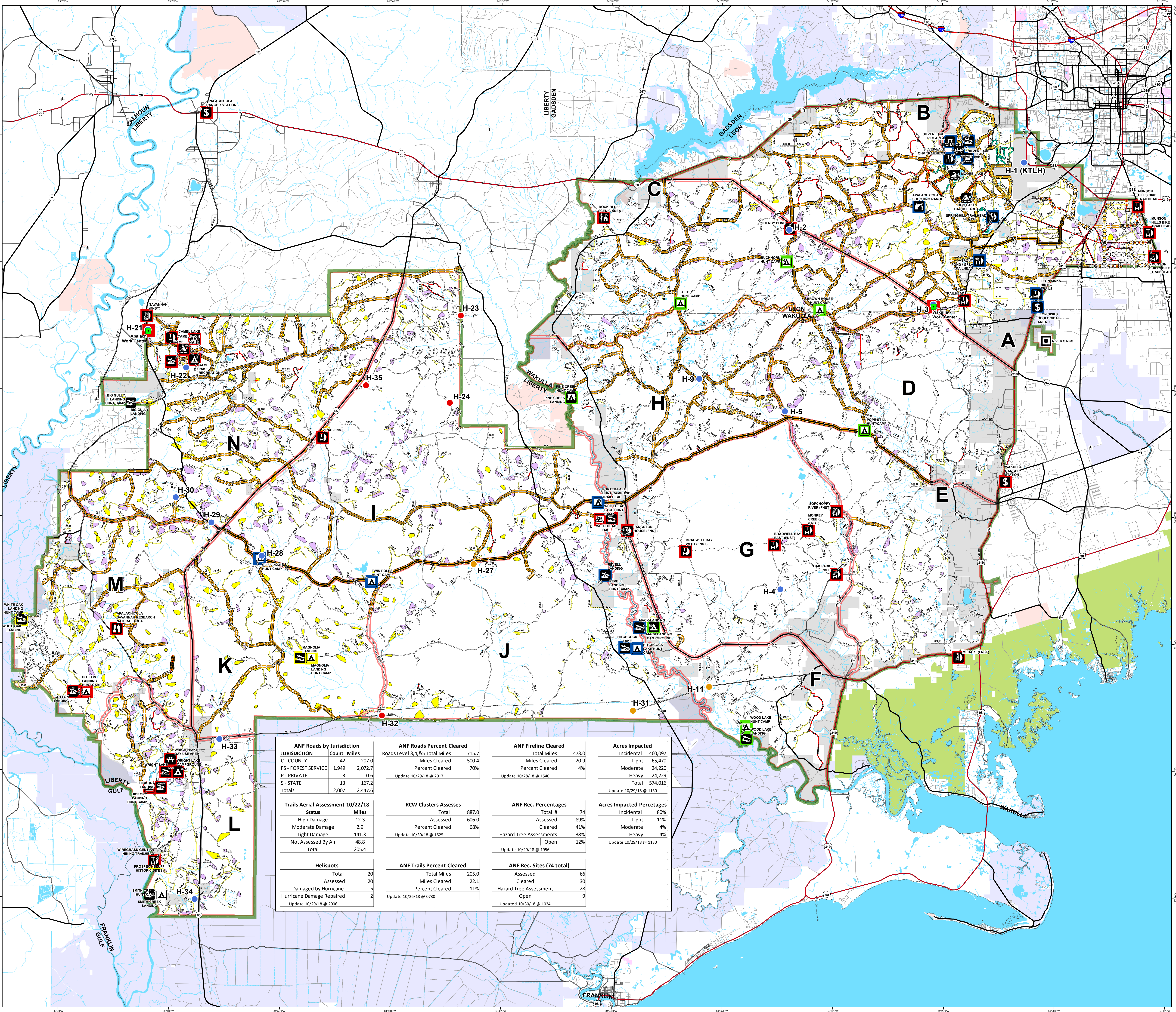
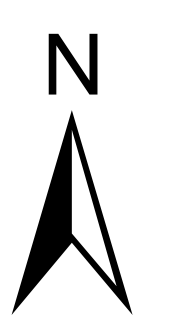
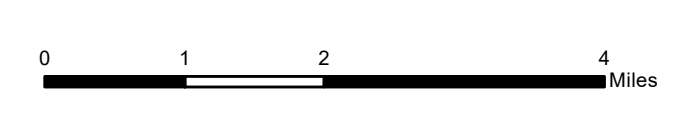


# Apalachicola National Forest Hurricane Michael Response FL-FNF-018011 Current Status Map 10/30/18



- Rec Site**
- Boating Site
  - Campground
  - Camping Area
  - Day Use Area
  - Fishing Site
  - Info Site/Fee Station
  - Observation Site
  - Picnic Site
  - Swimming Site
  - Target Range
  - Trailhead
  - Wildlife Viewing Site
- Rec Site Assessment**
- Assessed
  - Assessed & Cleared
  - Assessed, Cleared & Hazard Trees Assessed
  - Open
- Major Roads**
- Interstate
  - Principal Arterial
  - Major Collector
  - Minor Arterial
  - Minor Collector
  - Local
- Forest Roads**
- 5 - High Degree Of User Comfort
  - 4 - Moderate Degree Of User Comfort
  - 3 - Suitable For Passenger Cars
  - 2 - High Clearance Vehicles (Admin Only)
  - 1 - Basic Custodial Care (Closed)
  - Forest Road Cleared
  - Fireline Cleared
  - Trails
  - Trail Cleared
  - County Road
- Helispots**
- Ready for Air Operations
  - Not Ready for Air Operations
  - Not Ready Hurricane Michael Impacts
- RCW Cluster Assessment**
- RCW Assessment complete
  - RCW Assessment not complete
  - Work\_Center
  - ANF Inholdings Unofficial
  - Emergency Response Divisions
  - Forest Boundary (Unofficial)
  - County Boundary (Florida)
- OWNER**
- USFWS
  - Local
  - Private
  - State

ANF Roads by Jurisdiction		ANF Roads Percent Cleared		ANF Fireline Cleared		Acres Impacted	
JURISDICTION	Count Miles	Roads Level 3,4,&5 Total Miles	Miles Cleared	Total Miles	Miles Cleared	Incidental	Light
C - COUNTY	42 207.0	715.7	500.4	473.0	20.9	460,097	65,470
FS - FOREST SERVICE	1,949 2,072.7						24,229
P - PRIVATE	3 0.6						24,229
S - STATE	13 167.2						574,016
Totals	2,007 2,447.6						
Update 10/29/18 @ 1526		Percent Cleared 70%		Update 10/28/18 @ 1540		Update 10/29/18 @ 1130	

Trails Aerial Assessment 10/22/18		RCW Clusters Assesses		ANF Rec. Percentages		Acres Impacted Percentages	
Status	Miles	Total	Assessed	Total #	Assessed	Incidental	80%
High Damage	12.3	887.0	606.0	74	89%	Light	11%
Moderate Damage	2.9				68%	Moderate	4%
Light Damage	141.3					Heavy	4%
Not Assessed By Air	48.8					Open	12%
Total	205.4						
Update 10/29/18 @ 0730		Update 10/29/18 @ 1525		Update 10/29/18 @ 1956		Update 10/29/18 @ 1130	

Helispots		ANF Trails Percent Cleared		ANF Rec. Sites (74 total)	
Total	20	Total Miles	205.0	Assessed	66
Damaged	20	Miles Cleared	22.1	Cleared	30
Assessed	20	Percent Cleared	11%	Hazard Tree Assessment	28
Damaged by Hurricane	5			Open	9
Hurricane Damage Repaired	2				
Update 10/29/18 @ 2006		Update 10/26/18 @ 0730		Updated 10/30/18 @ 1024	

This map was produced by the SA Red Team GIS on 10/30/2018 at 1526 Hours.  
Data Projection: NAD\_1983\_StatePlane\_Florida\_North\_FIPS\_0003\_Feet

