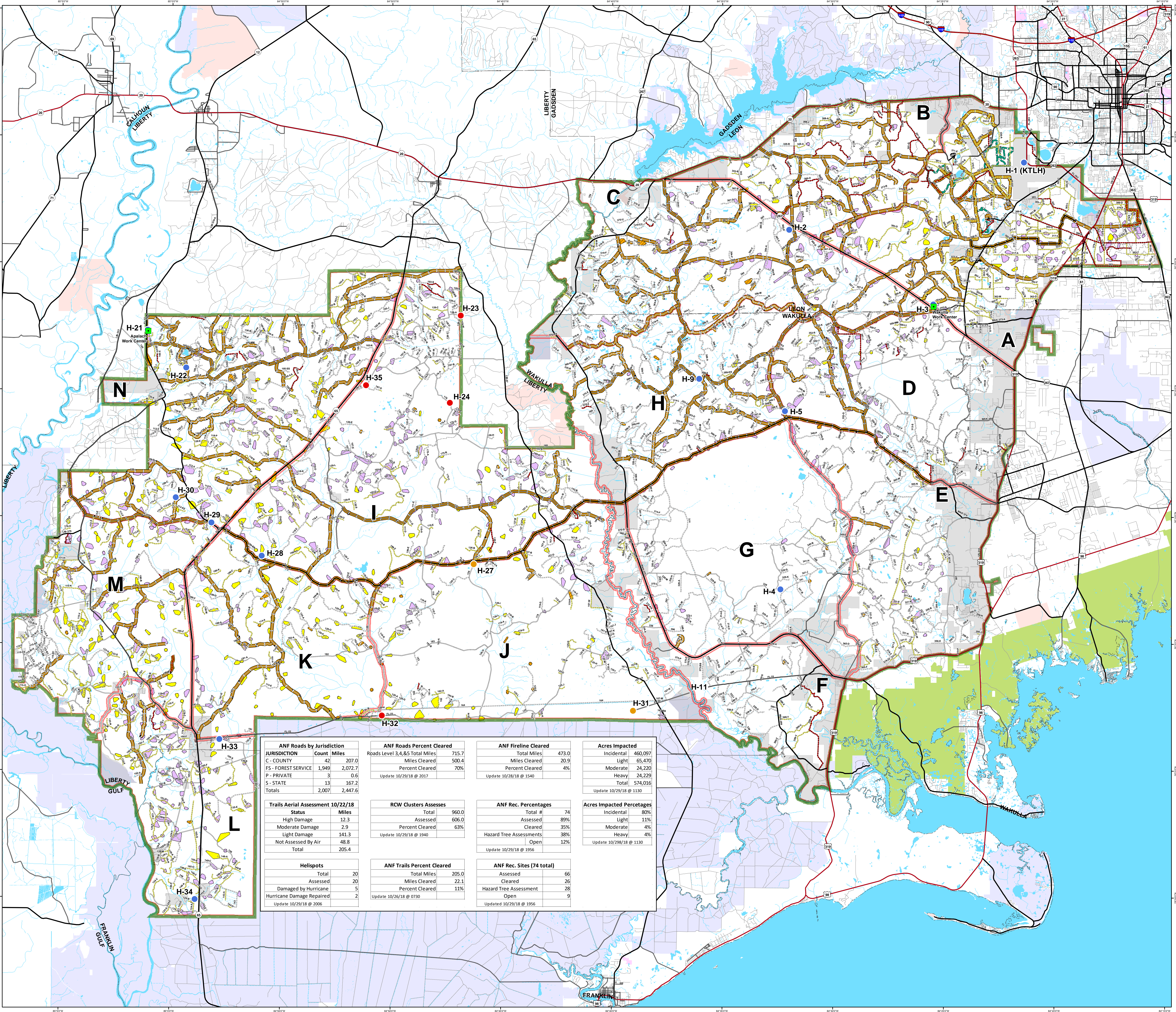
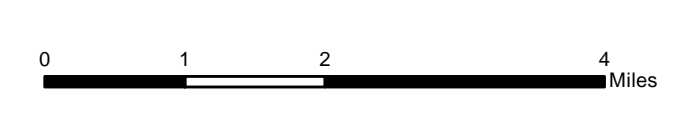


**Apalachicola National Forest
Hurricane Michael
Response
FL-FNF-018011
Wildlife Group
10/29/18**



- Major Roads**
- Interstate
 - Principal Arterial
 - Major Collector
 - Minor Arterial
 - Minor Collector
 - Local
- Forest Roads**
- 5 - High Degree Of User Comfort
 - 4 - Moderate Degree Of User Comfort
 - 3 - Suitable For Passenger Cars
 - 2 - High Clearance Vehicles (Admin Only)
 - 2 - High Clearance Vehicles (Admin Only)
 - 1 - Basic Custodial Care (Closed)
 - Forest Road Cleared
 - Trails
 - Trail Cleared
 - County Road
- Helispots**
- Ready for Air Operations
 - Not Ready for Air Operations
 - Not Ready Hurricane Michael Impacts
- RCW Cluster Assessment**
- RCW Assessment complete
 - RCW Assessment not complete
 - Other RCW Cluster
 - Work_Center
 - ANF Inholdings Unofficial
 - Emergency Response Divisions
 - Forest Boundary (Unofficial)
 - County Boundary (Florida)
- OWNER**
- USFWS
 - Local
 - Private
 - State

ANF Roads by Jurisdiction		ANF Roads Percent Cleared		ANF Fireline Cleared		Acres Impacted	
JURISDICTION	Count Miles	Roads Level 3,4,&5 Total Miles	Miles Cleared	Total Miles	Miles Cleared	Incidental	Light
C - COUNTY	42 207.0	715.7	500.4	473.0	20.9	460,097	65,470
FS - FOREST SERVICE	1,949 2,072.7						24,220
P - PRIVATE	3 0.6						24,229
S - STATE	13 167.2						Total 574,016
Totals	2,007 2,447.6						Update 10/29/18 @ 1130
Percent Cleared 70%		Percent Cleared 4%					
Update 10/29/18 @ 2017		Update 10/28/18 @ 1540					
Trails Aerial Assessment 10/22/18		RCW Clusters Assesses		ANF Rec. Percentages		Acres Impacted Percentages	
Status	Miles	Total	Assessed	Total #	Assessed	Incidental	Light
High Damage	12.3	960.0	606.0	74	89%	80%	11%
Moderate Damage	2.9			Cleared	35%		4%
Light Damage	141.3			Hazard Tree Assessments	38%		4%
Not Assessed By Air	48.8			Open	12%		
Total	205.4			Update 10/29/18 @ 1956			
Percent Cleared 63%		Total # 74					
Update 10/29/18 @ 1940		Update 10/29/18 @ 1956					
Helispots		ANF Trails Percent Cleared		ANF Rec. Sites (74 total)			
Total	20	Total Miles	Assessed	Assessed	Cleared		
Assessed	20	Miles Cleared	22.1	Hazard Tree Assessment	26		
Damaged by Hurricane	5	Percent Cleared	11%	Open	28		
Hurricane Damage Repaired	2	Update 10/26/18 @ 0730		Update 10/29/18 @ 1956			
Update 10/29/18 @ 2006							

This map was produced by the SA Red Team GIS on 10/29/2018 at 2041 Hours.
Data Projection: NAD_1983_StatePlane_Florida_North_FIPS_0903_Feet

