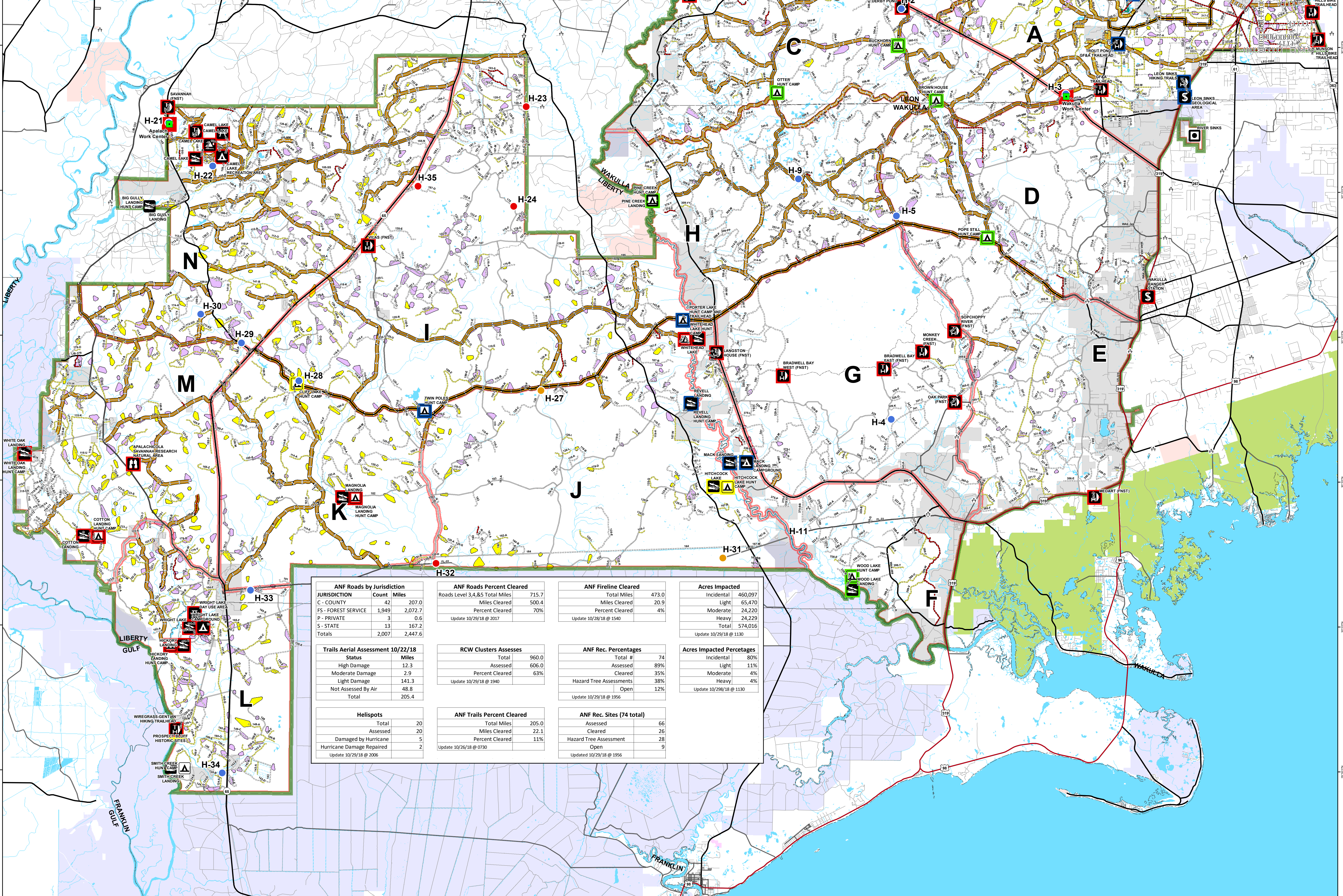
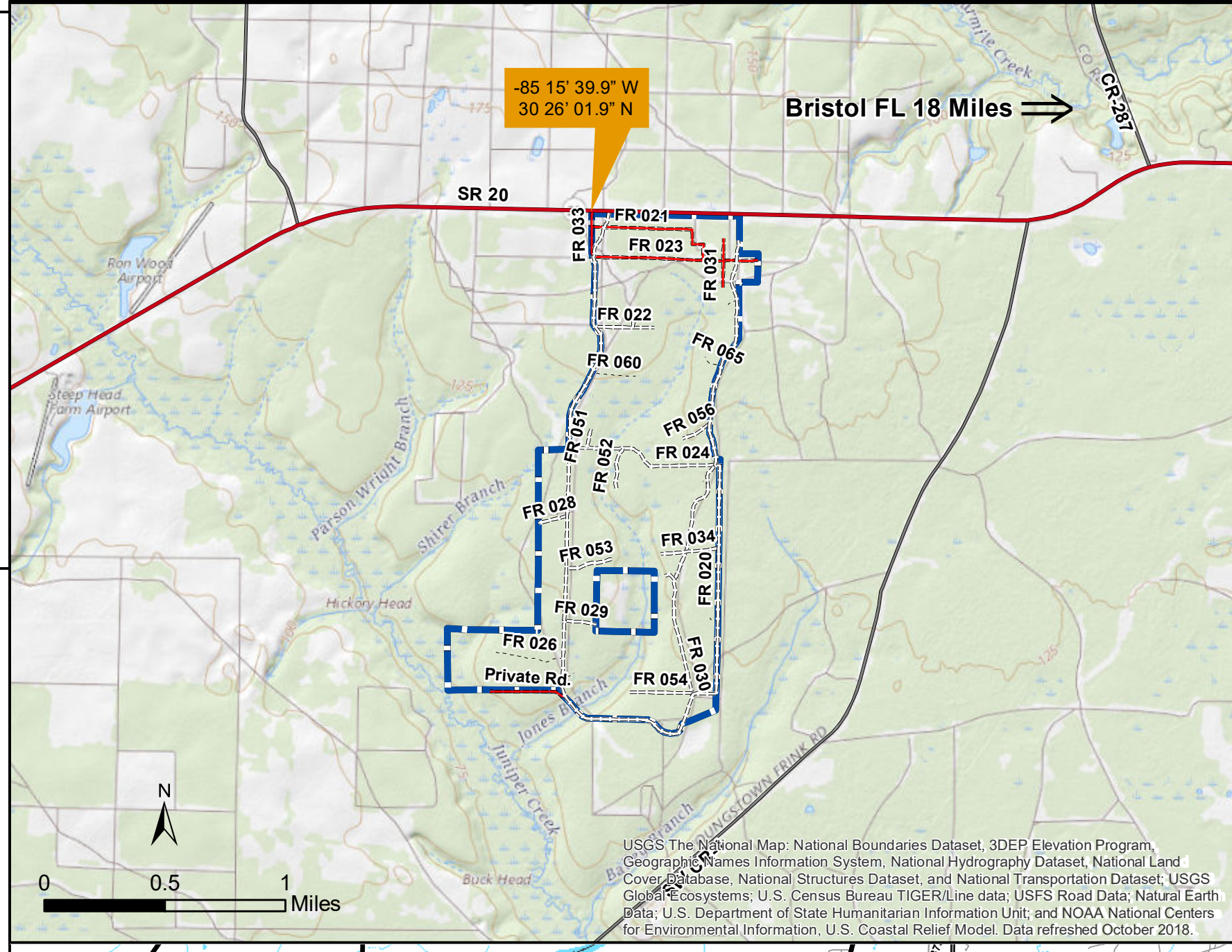
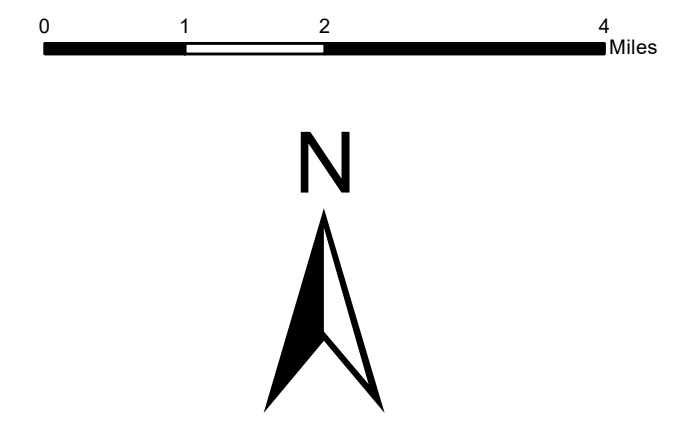


Apalachicola National Forest Hurricane Michael Response

FL-FNF-018011 Briefing Map

10/30/18



- Rec Site**
- Boating Site
 - Campground
 - Camping Area
 - Day Use Area
 - Fishing Site
 - Info Site/Fee Station
 - Observation Site
 - Picnic Site
 - Swimming Site
 - Target Range
 - Trailhead
 - Wildlife Viewing Site
- Rec Site Assessment**
- Assessed
 - Assessed & Cleared
 - Assessed, Cleared & Hazard Trees Assessed
 - Open
- Major Roads**
- Interstate
 - Principal Arterial
 - Major Collector
 - Minor Arterial
 - Minor Collector
 - Local
- Forest Roads**
- 5 - High Degree of User Comfort
 - 4 - Moderate Degree of User Comfort
 - 3 - Suitable For Passenger Cars
 - 2 - High Clearance Vehicles
 - 1 - High Clearance Vehicles (Admin Only)
 - 1 - Basic Custodial Care (Closed)
 - Forest Road Cleared
 - Fireline Cleared
 - Trails
 - Trail Cleared
 - County Road
- Helispots**
- Ready for Air Operations
 - Not Ready for Air Operations
 - Not Ready Hurricane Michael Impacts
- RCW Cluster Assessment**
- RCW Assessment complete
 - RCW Assessment not complete
 - Work_Center
 - ANF Inholdings Unofficial
 - Emergency Response Divisions
 - Forest Boundary (Unofficial)
 - County Boundary (Florida)
- OWNER**
- USFWS
 - Local
 - Private
 - State

ANF Roads by Jurisdiction		ANF Roads Percent Cleared		ANF Fireline Cleared		Acres Impacted	
JURISDICTION	Count Miles	Roads Level	3.4, 8.5 Total Miles	Total Miles	460,097	Incidental	460,097
C - COUNTY	42 207.0	Miles Cleared	500.4	Miles Cleared	20.9	Light	65,470
FS - FOREST SERVICE	1,949 2,072.7	Percent Cleared	70%	Percent Cleared	4%	Moderate	24,220
P - PRIVATE	3 0.6	Update 10/29/18 @ 2017		Update 10/28/18 @ 1540		Heavy	24,229
S - STATE	13 167.2					Total	574,016
Totals	2,007 2,447.6					Update 10/29/18 @ 1130	

Trails Aerial Assessment 10/22/18		RCW Clusters Assesses		ANF Rec. Percentages		Acres Impacted Percentages	
Status	Miles	Total	960.0	Total #	74	Incidental	80%
High Damage	12.3	Assessed	606.0	Assessed	89%	Light	11%
Moderate Damage	2.9	Percent Cleared	63%	Cleared	35%	Moderate	4%
Light Damage	141.3	Update 10/29/18 @ 1940		Hazard Tree Assessments	38%	Heavy	4%
Not Assessed By Air	48.8			Open	12%	Update 10/29/18 @ 1130	
Total	205.4						

Helispots		ANF Trails Percent Cleared		ANF Rec. Sites (74 total)	
Total	20	Total Miles	205.0	Assessed	66
Assessed	20 <td>Miles Cleared</td> <td>22.1 <td>Cleared</td> <td>26 </td></td>	Miles Cleared	22.1 <td>Cleared</td> <td>26 </td>	Cleared	26
Damaged by Hurricane	5 <td>Percent Cleared</td> <td>11%</td> <td>Hazard Tree Assessment</td> <td>28 </td>	Percent Cleared	11%	Hazard Tree Assessment	28
Hurricane Damage Repaired	2 <td>Update 10/26/18 @ 0730</td> <td></td> <td>Open</td> <td>9 </td>	Update 10/26/18 @ 0730		Open	9
				Updated 10/29/18 @ 1956	

This map was produced by the SA Red Team GIS on 10/29/2018 at 2028 Hours.
 Data Projection: NAD_1983_StatePlane_Florida_North_FIPS_0903_Feet

