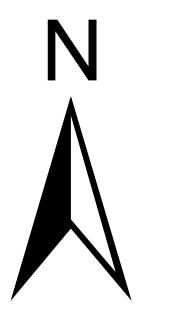
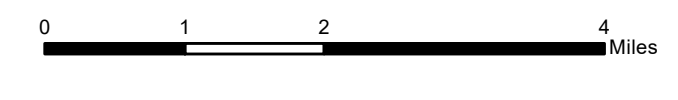


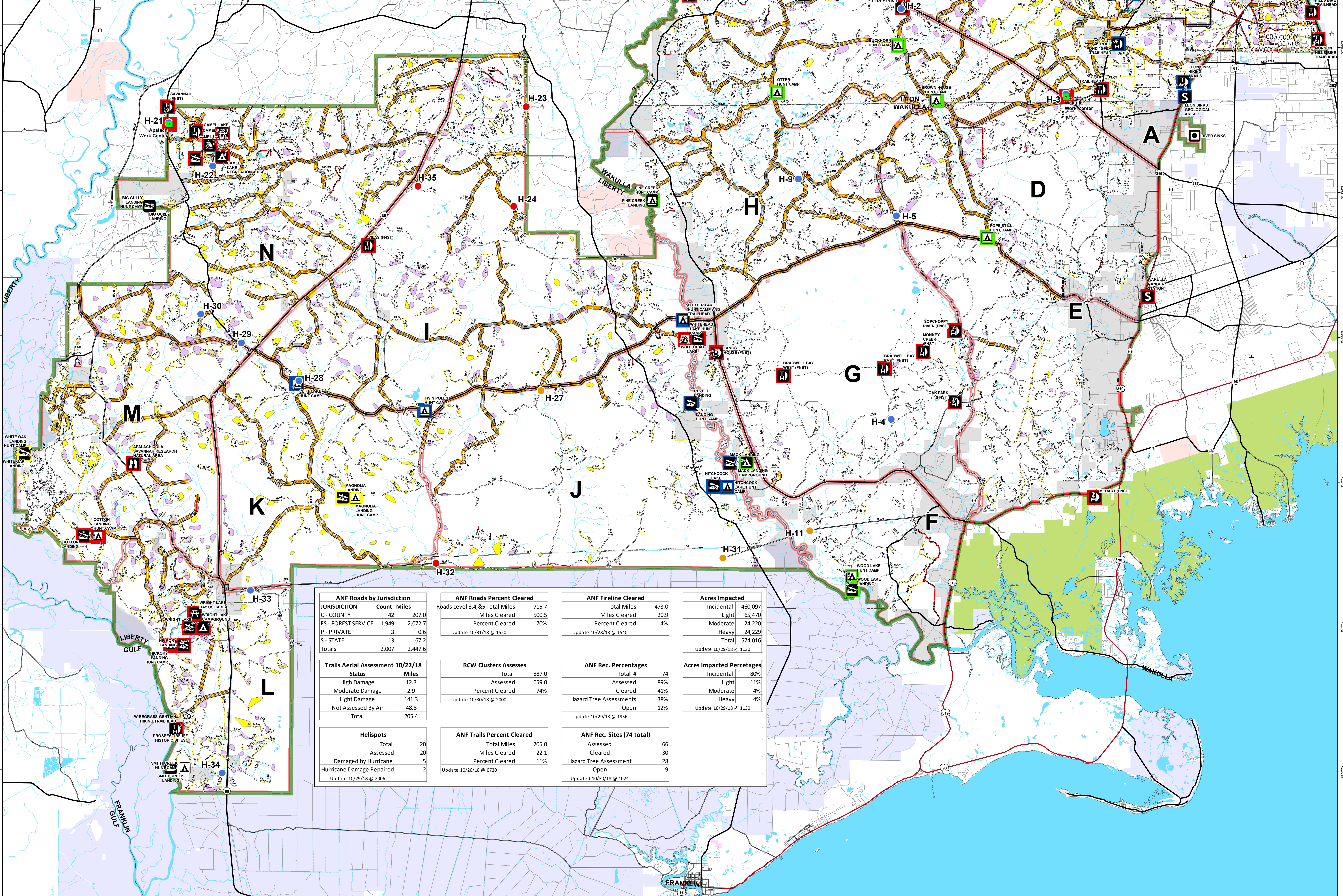
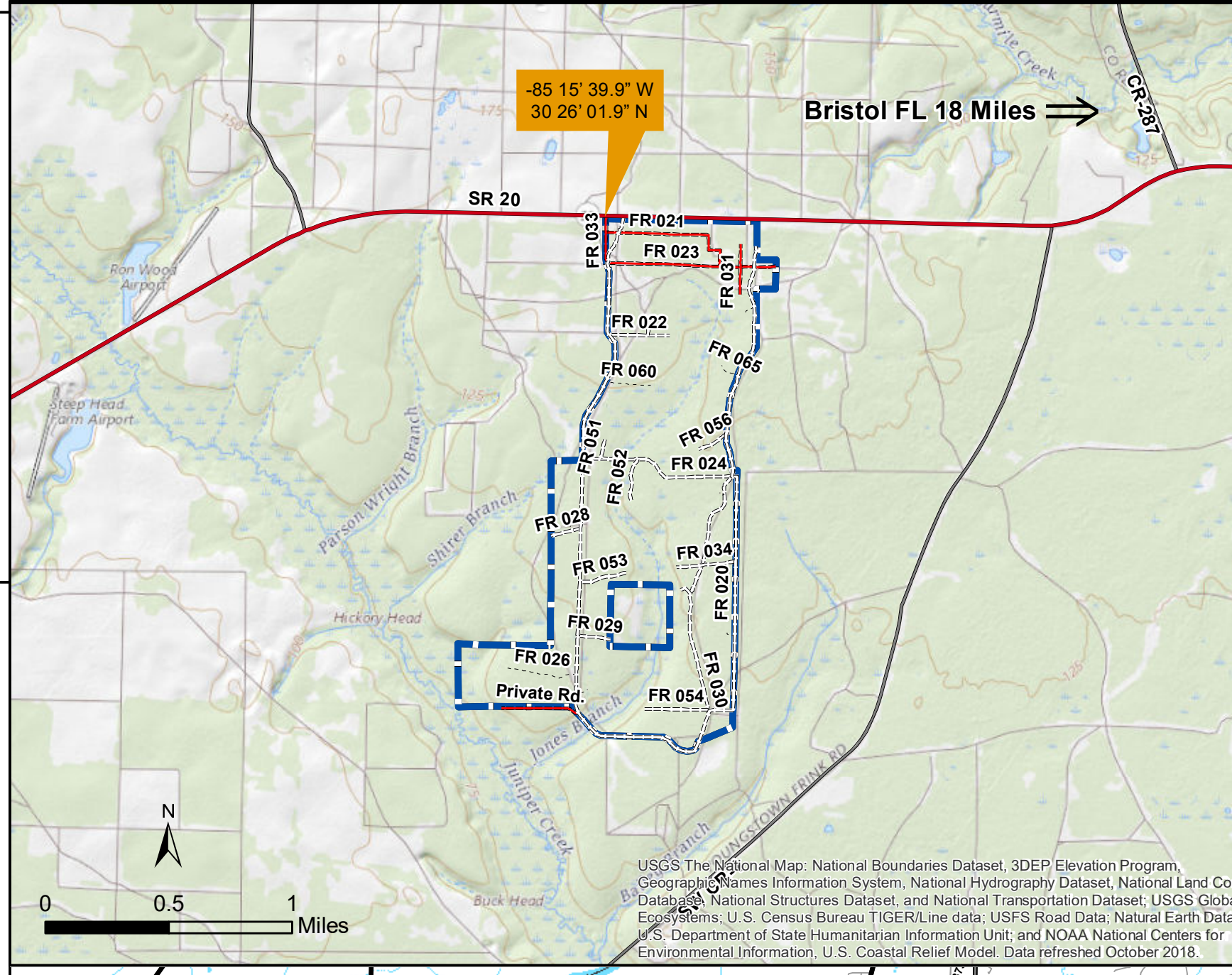
Apalachicola National Forest Hurricane Michael Response

FL-FNF-018011 Current Status Map

10/31/18



- Rec Site**
 - Boating Site
 - Campground
 - Camping Area
 - Day Use Area
 - Fishing Site
 - Info Site/Fee Station
 - Observation Site
 - Picnic Site
 - Swimming Site
 - Target Range
 - Trailhead
 - Wildlife Viewing Site
- Rec Site Assessment**
 - Assessed
 - Assessed & Cleared
 - Assessed, Cleared & Hazard Trees Assessed
 - Open
- RCW_Active_Inactive_Cluster Cluster_Assessment**
 - RCW Assessment complete
 - RCW Assessment not complete
- Major Roads**
 - Interstate
 - Principal Arterial
 - Major Collector
 - Minor Arterial
 - Minor Collector
 - Local
- Forest Roads**
 - 5 - High Degree of User Comfort
 - 4 - Moderate Degree of User Comfort
 - 3 - Suitable For Passenger Cars
 - 2 - High Clearance Vehicles
 - 2 - High Clearance Vehicles (Admin Only)
 - 1 - Basic Custodial Care (Closed)
 - Forest Road Cleared
 - Fireline Cleared
- Trails**
 - Trail Cleared
 - County Road
- Helispots**
 - Ready for Air Operations
 - Not Ready for Air Operations
 - Not Ready Hurricane Michael Impacts
 - Work_Center
 - ANF Inholdings Unofficial
 - Emergency Response Divisions
 - Forest Boundary (Unofficial)
 - County Boundary (Florida)
- OWNER**
 - USFWS
 - Local
 - Private
 - State



ANF Roads by Jurisdiction		ANF Roads Percent Cleared		ANF Fireline Cleared		Acres Impacted	
JURISDICTION	Count Miles	Roads Level 3,4,&5 Total Miles	Miles Cleared	Total Miles	Miles Cleared	Incidental	Light
C - COUNTY	42 207.0	715.7	500.5	473.0	20.9	460,097	65,470
FS - FOREST SERVICE	1,949 2,072.7	500.5	70%	20.9	4%	24,220	24,229
P - PRIVATE	3 0.6					24,229	574,016
S - STATE	13 167.2						
Totals	2,007 2,447.6						
Trails Aerial Assessment 10/22/18		RCW Clusters Assesses		ANF Rec. Percentages		Acres Impacted Percentages	
Status	Miles	Total	887.0	Total #	74	Incidental	80%
High Damage	12.3	Assessed	659.0	Assessed	89%	Light	11%
Moderate Damage	2.9	Percent Cleared	74%	Cleared	41%	Moderate	4%
Light Damage	141.3			Hazard Tree Assessments	38%	Heavy	4%
Not Assessed By Air	48.8			Open	12%		
Total	205.4						
Helispots		ANF Trails Percent Cleared		ANF Rec. Sites (74 total)			
Total	20	Total Miles	205.0	Assessed	66		
Assessed	20	Miles Cleared	22.1	Cleared	30		
Damaged by Hurricane	5	Percent Cleared	11%	Hazard Tree Assessment	28		
Hurricane Damage Repaired	2			Open	9		

This map was produced by the SA Red Team GIS on 10/31/2018 at 1524 Hours.
 Data Projection: NAD_1983_StatePlane_Florida_North_FIPS_0003_Feet

