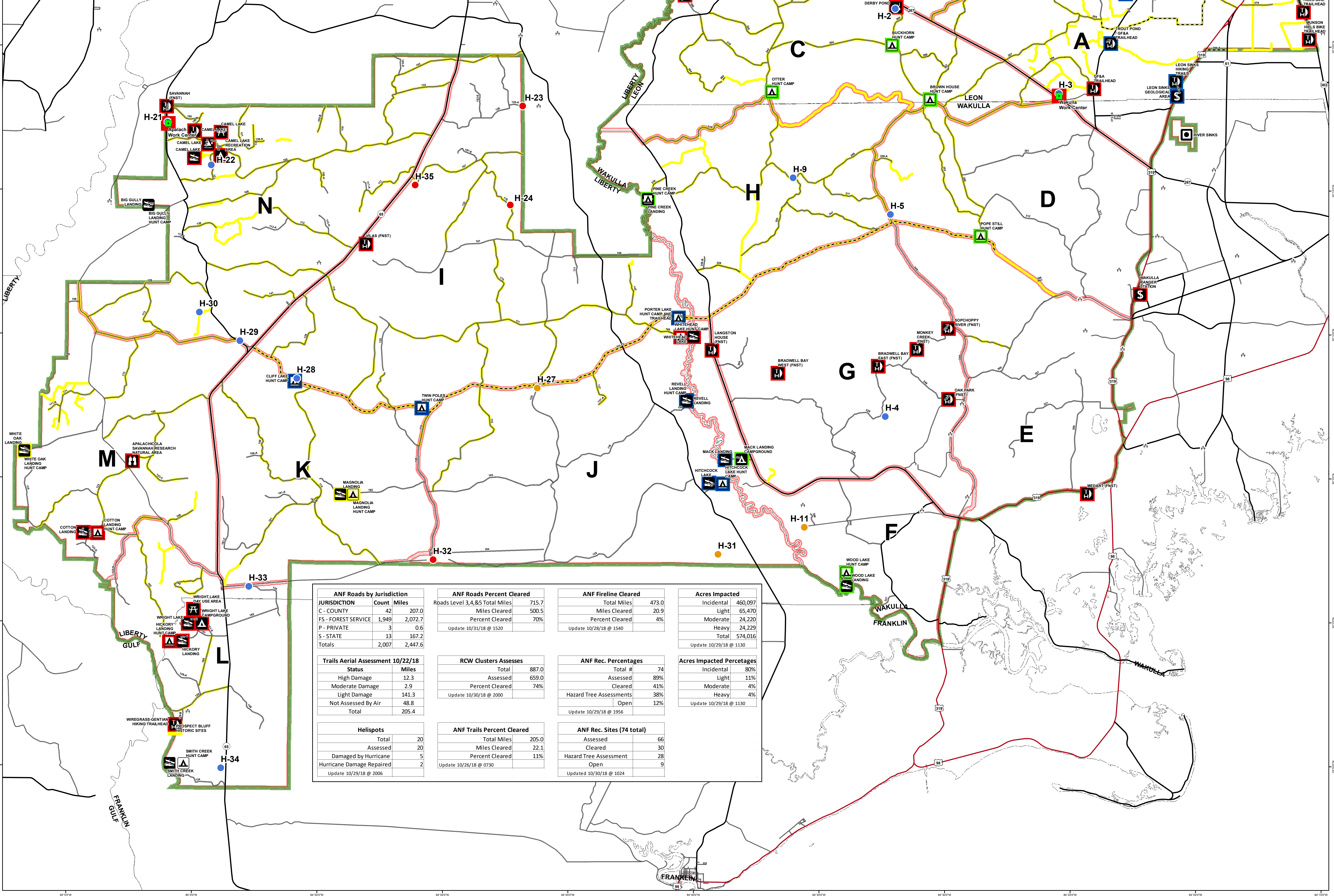
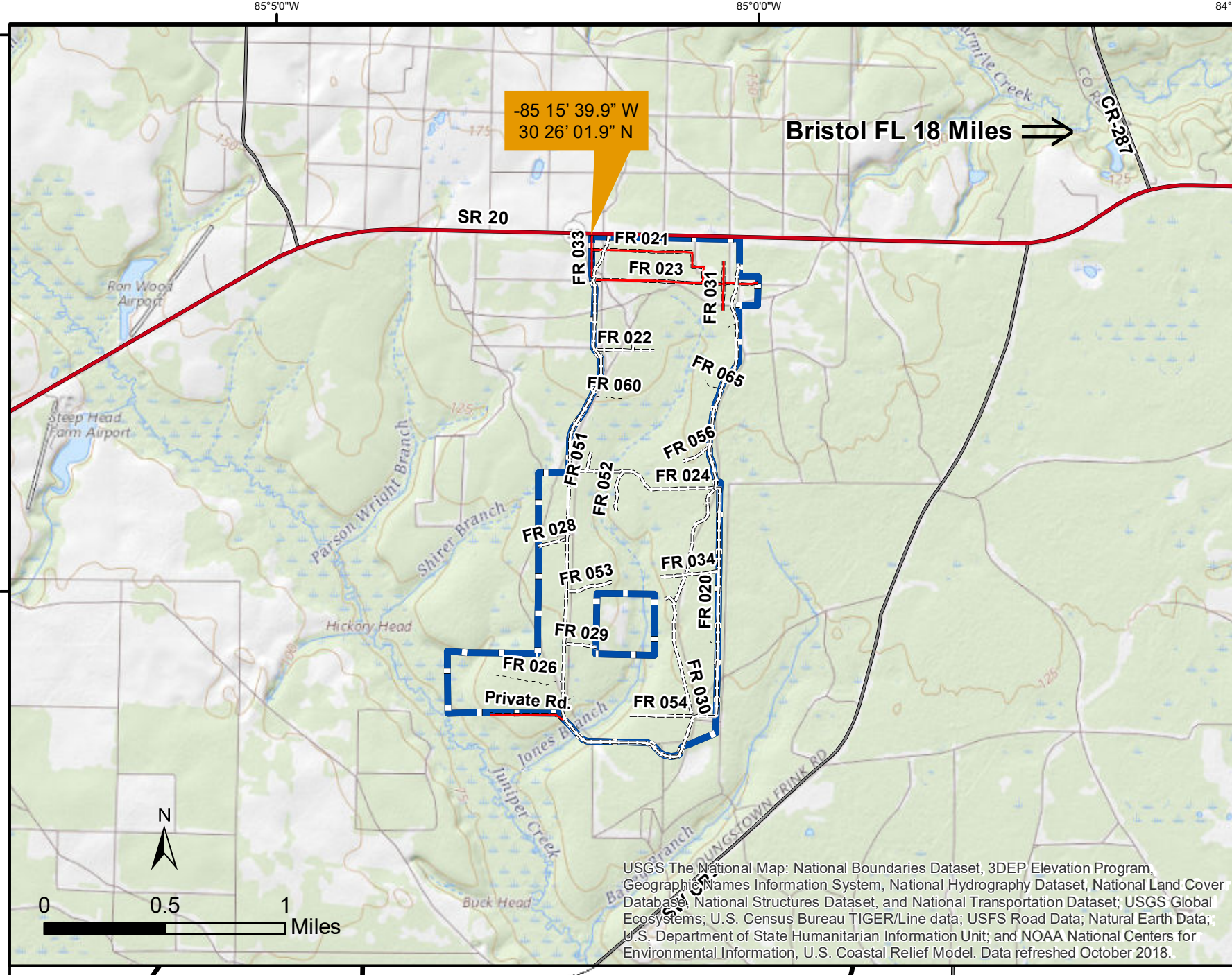
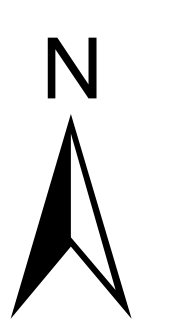
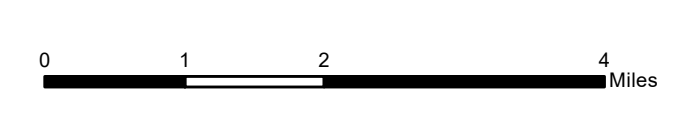


Apalachicola National Forest Hurricane Michael Response FL-FNF-018011 Road Status Review Map 10/31/18



ANF Roads by Jurisdiction		ANF Roads Percent Cleared		ANF Fireline Cleared		Acres Impacted	
JURISDICTION	Count Miles	Roads Level 3,4,&5 Total Miles	Miles Cleared	Total Miles	Miles Cleared	Incidental	460,097
C - COUNTY	42 207.0		500.5		20.9	Light	65,470
FS - FOREST SERVICE	1,949 2,072.7		70%		4%	Moderate	24,220
P - PRIVATE	3 0.6					Heavy	24,229
S - STATE	13 167.2					Total	574,016
Totals	2,007 2,447.6						
Update 10/31/18 @ 1520		Update 10/28/18 @ 1540		Update 10/29/18 @ 1130		Update 10/29/18 @ 1130	

Trails Aerial Assessment 10/22/18		RCW Clusters Assesses		ANF Rec. Percentages		Acres Impacted Percentages	
Status	Miles	Total	887.0	Total #	74	Incidental	80%
High Damage	12.3	Assessed	659.0	Assessed	89%	Light	11%
Moderate Damage	2.9	Percent Cleared	74%	Cleared	41%	Moderate	4%
Light Damage	141.3			Hazard Tree Assessments	38%	Heavy	4%
Not Assessed By Air	48.8			Open	12%		
Total	205.4						
Update 10/30/18 @ 2000		Update 10/29/18 @ 1956		Update 10/29/18 @ 1130		Update 10/29/18 @ 1130	

Helispots		ANF Trails Percent Cleared		ANF Rec. Sites (74 total)	
Total	20	Total Miles	205.0	Assessed	66
Assessed	20	Miles Cleared	22.1	Cleared	30
Damaged by Hurricane	5	Percent Cleared	11%	Hazard Tree Assessment	28
Hurricane Damage Repaired	2			Open	9
Update 10/29/18 @ 2006		Update 10/26/18 @ 0730		Updated 10/30/18 @ 1024	

- Rec Site**
 - Boating Site
 - Campground
 - Camping Area
 - Day Use Area
 - Fishing Site
 - Info Site/Fee Station
 - Observation Site
 - Picnic Site
 - Swimming Site
 - Target Range
 - Trailhead
 - Wildlife Viewing Site
- Rec Site Assessment**
 - Assessed
 - Assessed & Cleared
 - Assessed, Cleared & Hazard Trees Assessed
 - Open
- Major Roads**
 - Interstate
 - Principal Arterial
 - Major Collector
 - Minor Arterial
 - Minor Collector
 - Local
- Forest Roads (~613 miles)**
 - 5 - High Degree Of User Comfort
 - 4 - Moderate Degree Of User Comfort
 - 3 - Suitable For Passenger Cars
 - Forest Road Cleared
- Helispots**
 - Ready for Air Operations
 - Not Ready for Air Operations
 - Not Ready Hurricane Michael Impacts
 - Work_Center
 - Emergency Response Divisions
 - Forest Boundary (Unofficial)
 - County Boundary (Florida)

This map was produced by the SA Red Team GIS on 10/31/2018 at 1724 Hours.
Data Projection: NAD_1983_StatePlane_Florida_North_FIPS_0003_Feet

