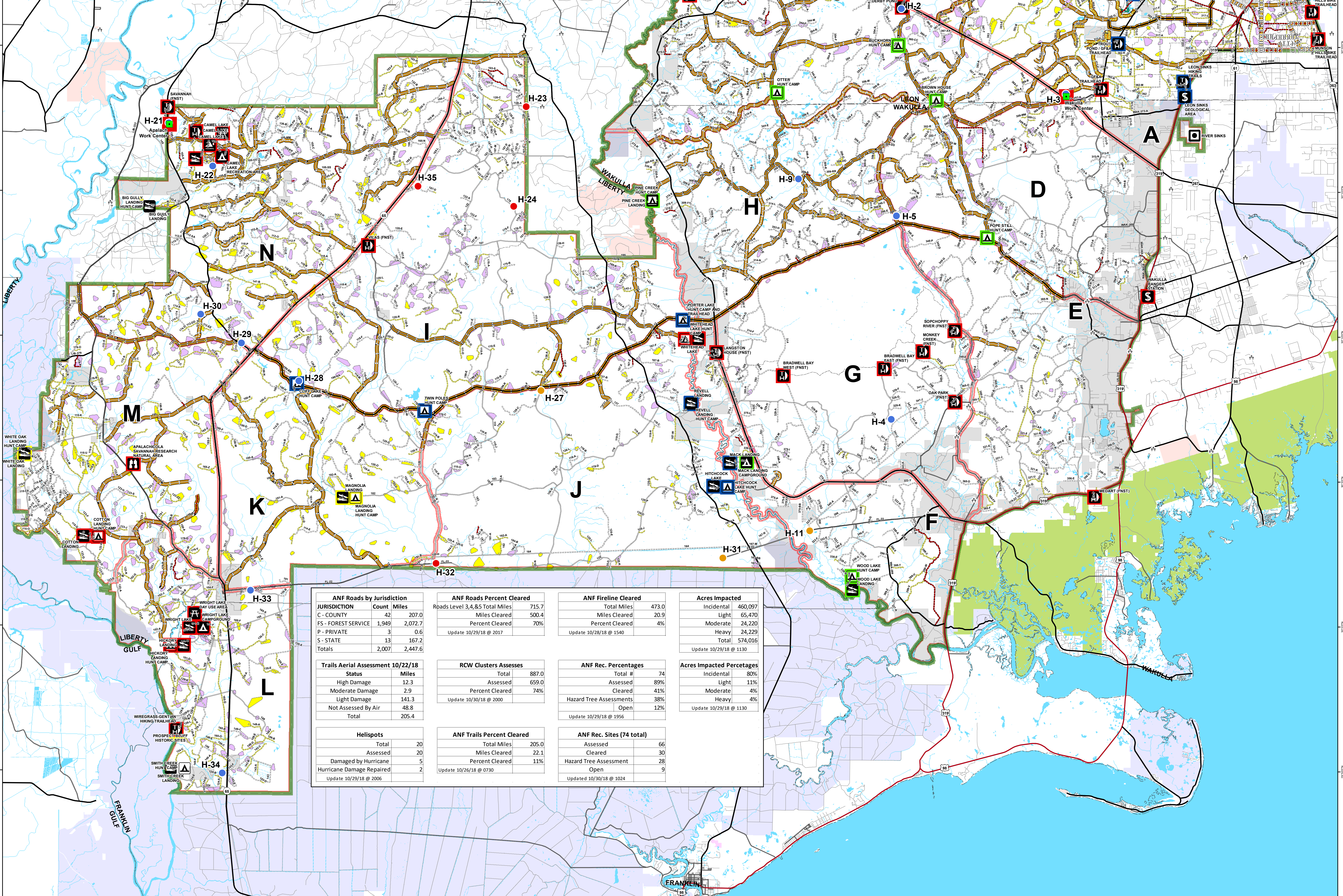
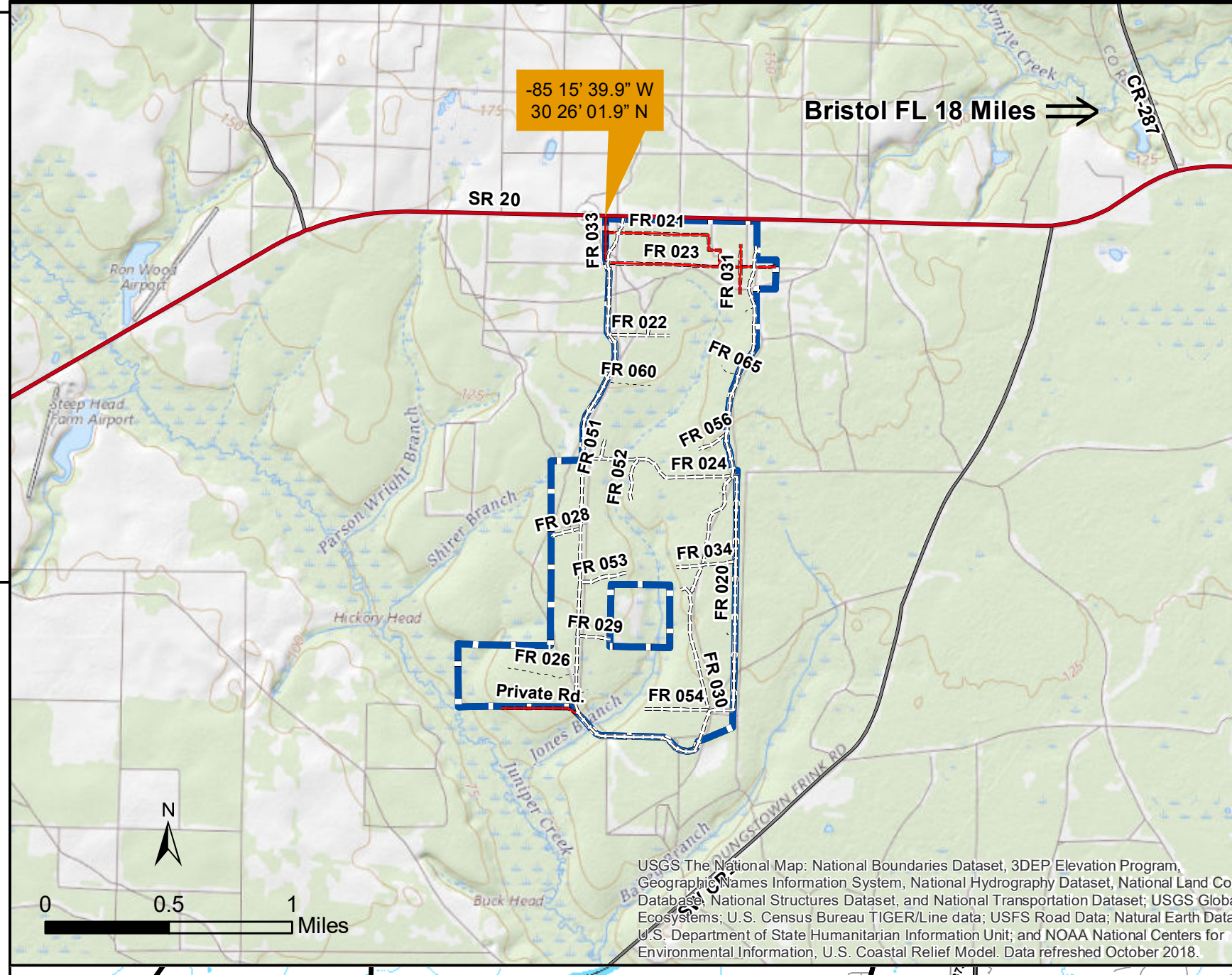
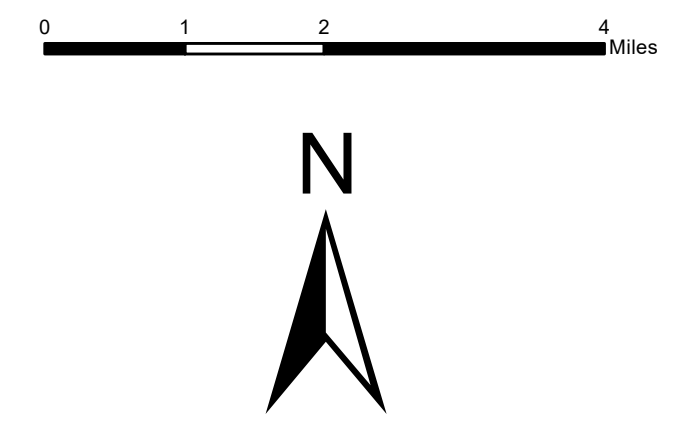


Apalachicola National Forest Hurricane Michael Response FL-FNF-018011 Briefing Map 10/31/18



ANF Roads by Jurisdiction		ANF Roads Percent Cleared		ANF Fireline Cleared		Acres Impacted	
JURISDICTION	Count Miles	Roads Level 3,4, & 5 Total Miles	715.7	Total Miles	473.0	Incidental	460,097
C - COUNTY	42 207.0	Miles Cleared	500.4	Miles Cleared	20.9	Light	65,470
FS - FOREST SERVICE	1,949 2,072.7	Percent Cleared	70%	Percent Cleared	4%	Moderate	24,220
P - PRIVATE	3 0.6	Update 10/29/18 @ 2017		Update 10/28/18 @ 1540		Heavy	24,229
S - STATE	13 167.2					Total	574,016
Totals	2,007 2,447.6			Update 10/29/18 @ 1130			

Trails Aerial Assessment 10/22/18		RCW Clusters Assesses		ANF Rec. Percentages		Acres Impacted Percentages	
Status	Miles	Total	887.0	Total #	74	Incidental	80%
High Damage	12.3	Assessed	659.0	Assessed	89%	Light	11%
Moderate Damage	2.9	Percent Cleared	74%	Cleared	41%	Moderate	4%
Light Damage	141.3	Update 10/30/18 @ 2000		Hazard Tree Assessments	38%	Heavy	4%
Not Assessed By Air	48.8			Open	12%		
Total	205.4			Update 10/29/18 @ 1956			

Helispots		ANF Trails Percent Cleared		ANF Rec. Sites (74 total)	
Total	20	Total Miles	205.0	Assessed	66
Assessed	20	Miles Cleared	22.1	Cleared	30
Damaged by Hurricane	5	Percent Cleared	11%	Hazard Tree Assessment	28
Hurricane Damage Repaired	2	Update 10/29/18 @ 0730		Open	9
Update 10/29/18 @ 2006				Updated 10/30/18 @ 1024	

Rec Site

- Boating Site
- Campground
- Camping Area
- Day Use Area
- Fishing Site
- Info Site/Fee Station
- Observation Site
- Picnic Site
- Swimming Site
- Target Range
- Trailhead
- Wildlife Viewing Site

Rec Site Assessment

- Assessed
- Assessed & Cleared
- Assessed, Cleared & Hazard Trees Assessed
- Open

Major Roads

- Interstate
- Principal Arterial
- Major Collector
- Minor Arterial
- Minor Collector
- Local

Forest Roads

- 5 - High Degree of User Comfort
- 4 - Moderate Degree of User Comfort
- 3 - Suitable For Passenger Cars
- 2 - High Clearance Vehicles (Admin Only)
- 1 - Basic Custodial Care (Closed)
- Forest Road Cleared
- Fireline Cleared
- Trails
- Trail Cleared
- County Road

Helispots

- Ready for Air Operations
- Not Ready for Air Operations
- Not Ready Hurricane Michael Impacts
- Work_Center
- ANF Inholdings Unofficial
- Emergency Response Divisions

Cluster_Assessment

- RCW Assessment complete
- RCW Assessment not complete
- Forest Boundary (Unofficial)
- County Boundary (Florida)

OWNER

- USFWS
- Local
- Private
- State

This map was produced by the SA Red Team GIS on 10/30/2018 at 2028 Hours.
Data Projection: NAD_1983_StatePlane_Florida_North_FIPS_0003_Feet

