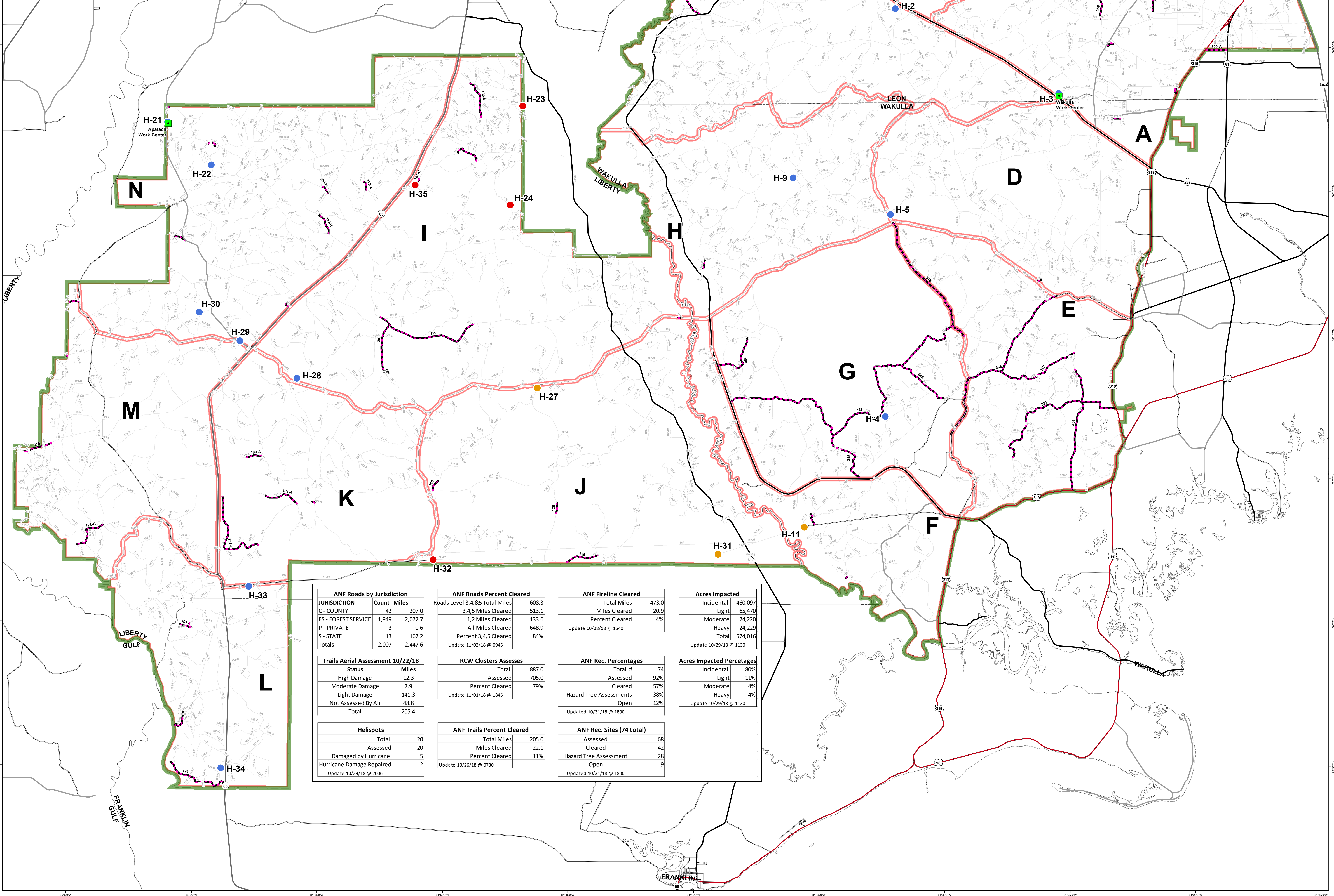
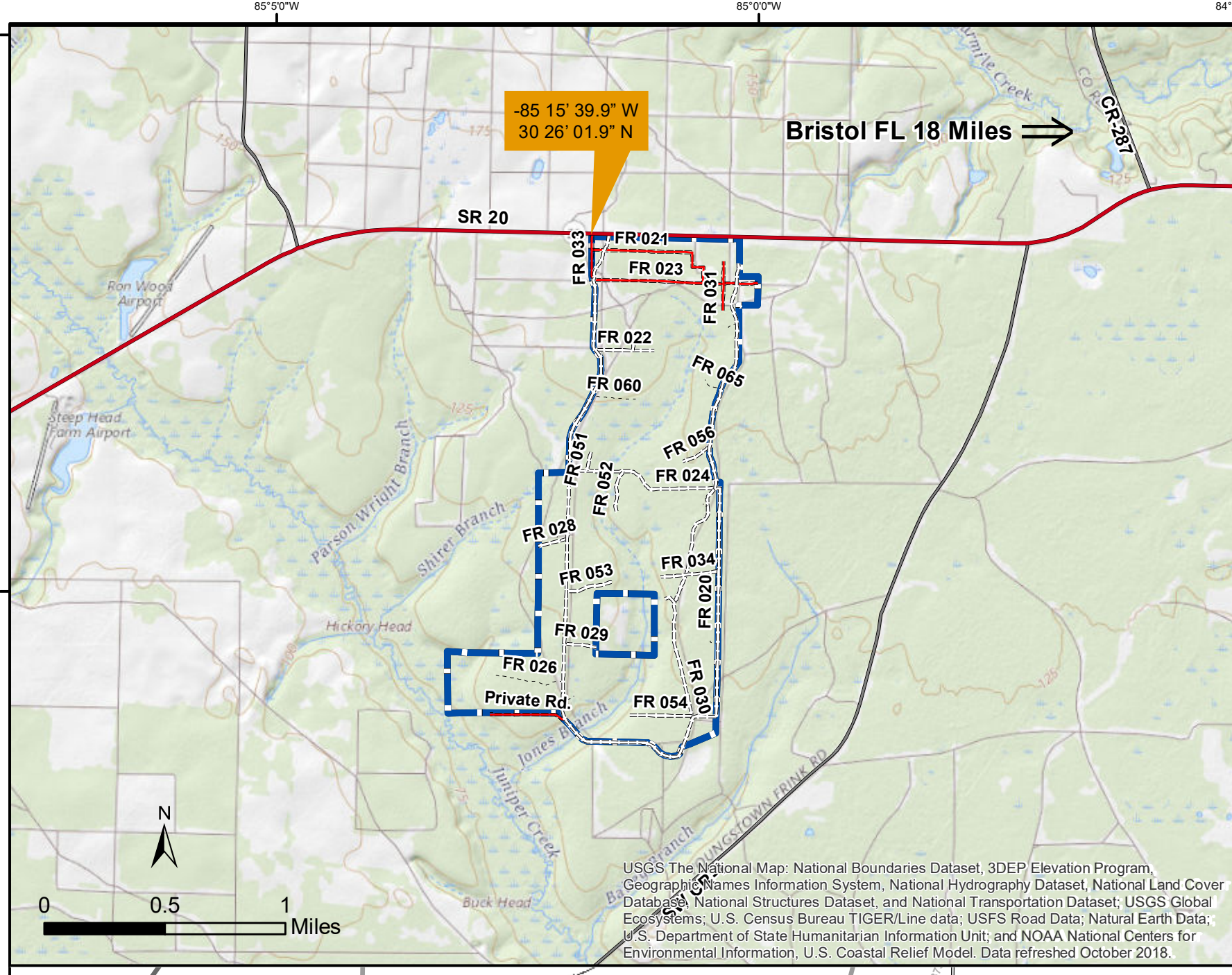
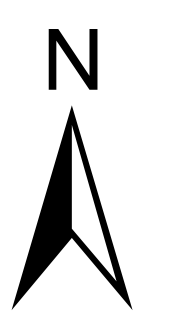
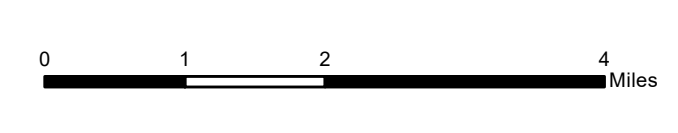


# Apalachicola National Forest Hurricane Michael Response FL-FNF-018011 Roads Not Cleared Map 11/03/18



- Forest Road Jurisdiction 3,4,5 - Not Cleared
- Forest Road
- Major Roads**
  - Interstate
  - Principal Arterial
  - Major Collector
  - Minor Collector
  - Local
- Helispots**
  - Ready for Air Operations
  - Not Ready for Air Operations
  - Not Ready for Hurricane Michael Impacts
  - Work Center
  - Emergency Response Divisions
  - Forest Boundary (Unofficial)
  - County Boundary (Florida)

<b>AIRPORT COMMUNICATIONS:</b> KAAF (Apalachicola Regional) CTAF/UNICOM: 122.8	<b>LOCAL HOSPITAL INFO:</b> FD18 (TMH Memorial Helipad) Helipad lighted with perimeter lights. 54'x54'
KPAM (Tyndall AFB) ATIS: 254.4 TOWER: 133.95 263.15	Lat/Long: 30 27.42' N 084 15.68' W Elevation 279 ft.
KTLH (Tallahassee International) CTAF: 118.7 UNICOM: 123.075 ATIS: 119.45	<b>HELIPORT COMMUNICATIONS:</b> WX ASOS at TLH (6 nm SW) PHONE 850-576-3665
2J0 (Wakulla County)	

<b>ANF Roads by Jurisdiction</b>		<b>ANF Roads Percent Cleared</b>		<b>ANF Fireline Cleared</b>		<b>Acres Impacted</b>	
JURISDICTION	Count Miles	Roads Level 3,4,&5 Total Miles	608.3	Total Miles	473.0	Incidental	460,097
C - COUNTY	42 207.0	3,4,5 Miles Cleared	513.1	Miles Cleared	20.9	Light	65,470
FS - FOREST SERVICE	1,949 2,072.7	1,2 Miles Cleared	133.6	Percent Cleared	4%	Moderate	24,220
P - PRIVATE	3 0.6	All Miles Cleared	648.9	Update 10/28/18 @ 1540		Heavy	24,229
S - STATE	13 167.2	Percent 3,4,5 Cleared	84%			Total	574,016
Totals	2,007 2,447.6	Update 11/02/18 @ 0945				Update 10/29/18 @ 1130	
<b>Trails Aerial Assessment 10/22/18</b>		<b>RCW Clusters Assesses</b>		<b>ANF Rec. Percentages</b>		<b>Acres Impacted Percentages</b>	
Status	Miles	Total	887.0	Total #	74	Incidental	80%
High Damage	12.3	Assessed	705.0	Assessed	92%	Light	11%
Moderate Damage	2.9	Percent Cleared	79%	Cleared	57%	Moderate	4%
Light Damage	141.3	Update 11/01/18 @ 1845		Hazard Tree Assessments	38%	Heavy	4%
Not Assessed By Air	48.8			Open	12%	Update 10/29/18 @ 1130	
Total	205.4						
<b>Helispots</b>		<b>ANF Trails Percent Cleared</b>		<b>ANF Rec. Sites (74 total)</b>			
Total	20	Total Miles	205.0	Assessed	68		
Assessed	20	Miles Cleared	22.1	Cleared	42		
Damaged by Hurricane	5	Percent Cleared	11%	Hazard Tree Assessment	28		
Hurricane Damage Repaired	2	Update 10/26/18 @ 0730		Open	9		
Update 10/29/18 @ 2006				Updated 10/31/18 @ 1800			

**Level one Trauma Center AND Burn Unit:**  
Shands at the University of Florida  
(29 38.20' N - 82 20.33' W)

**Level one Trauma Center ONLY:**  
Shands Jacksonville TraumaOne  
(30 20.58' N - 81 39.56' W)

This map was produced by the SA Red Team GIS on 11/2/2018 at 11:30 Hours.  
Data Projection: NAD\_1983\_StatePlane\_Florida\_North\_FIPS\_0003\_Feet

