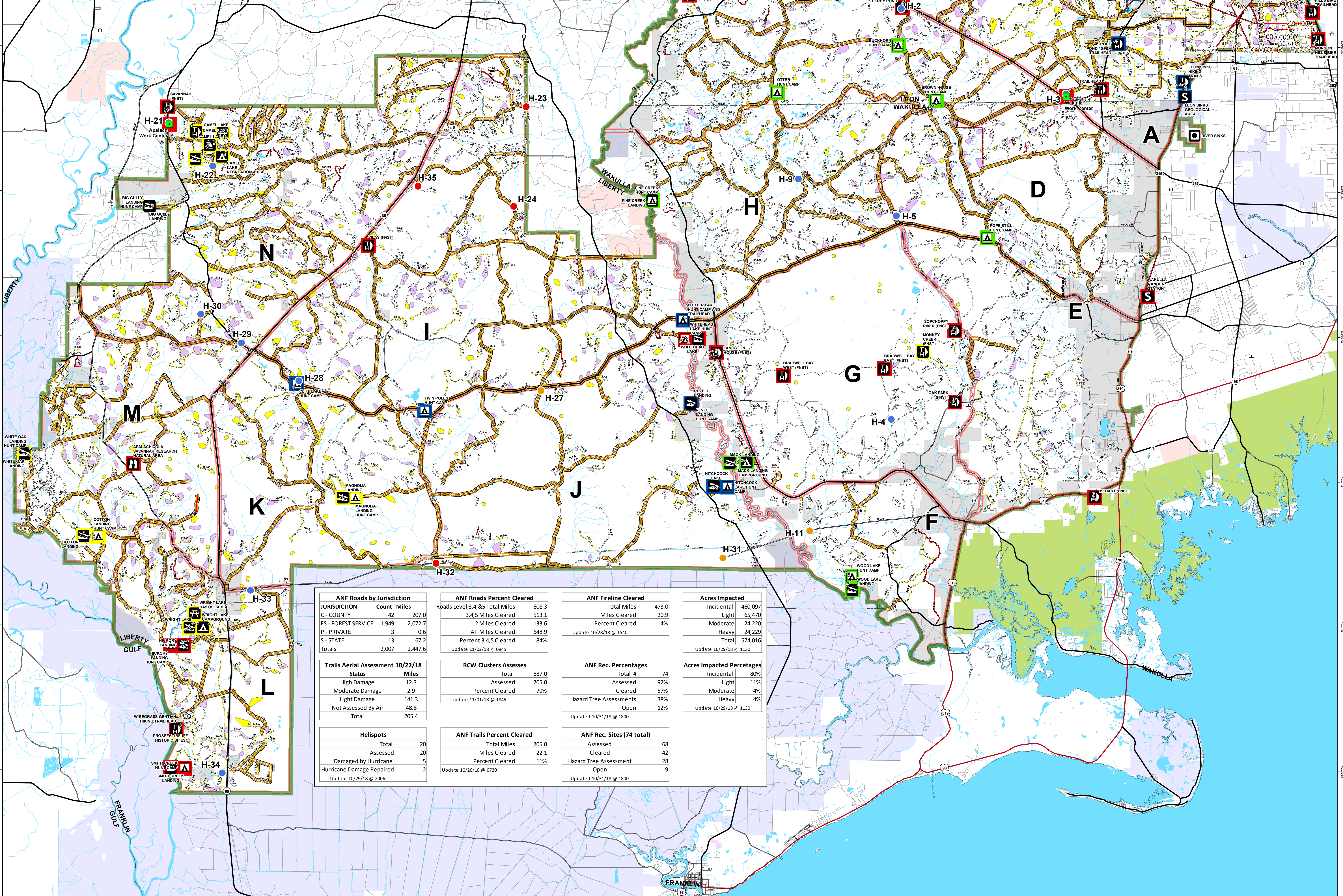
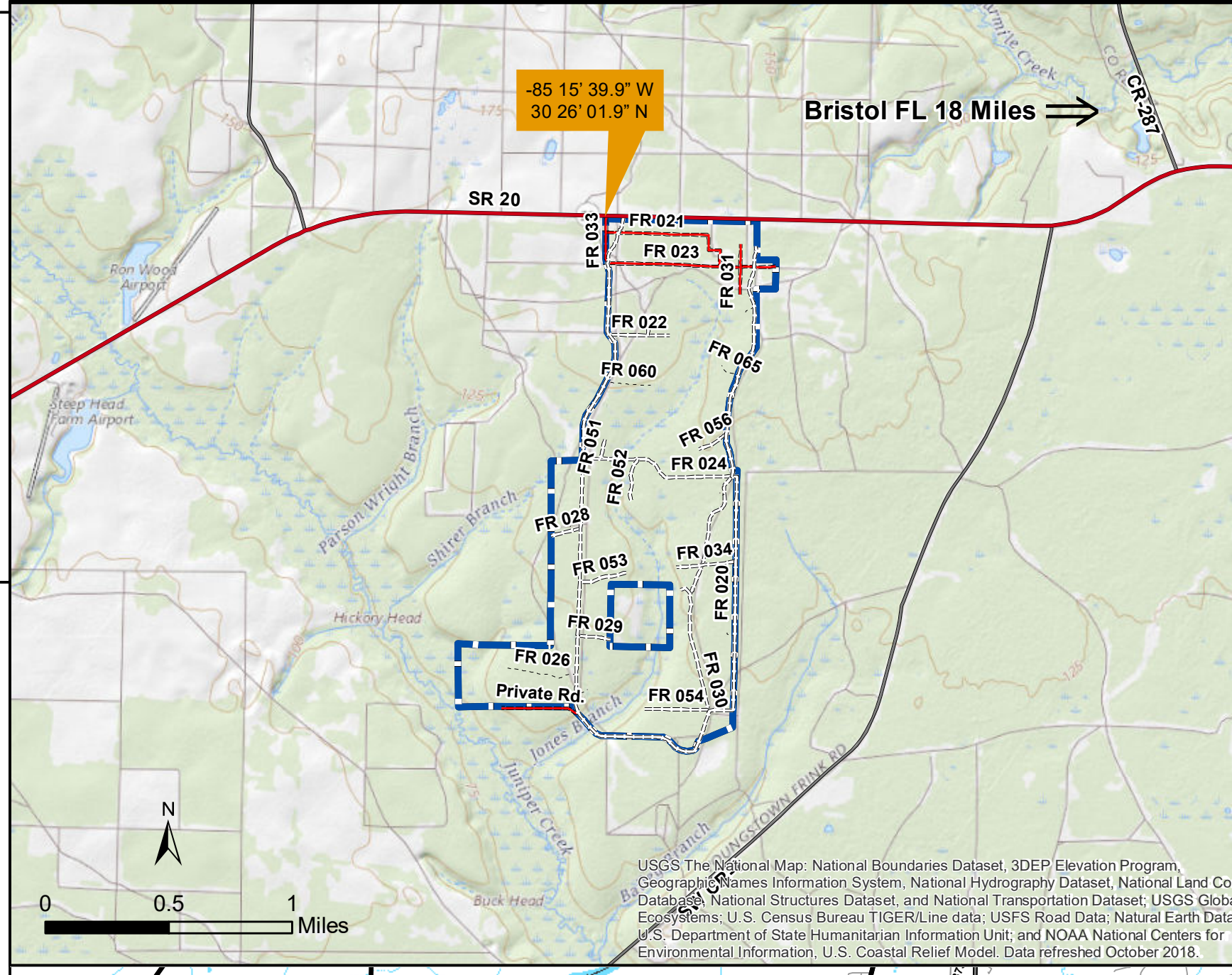
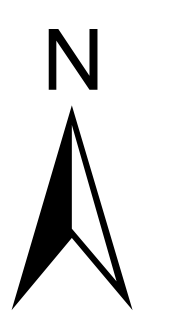
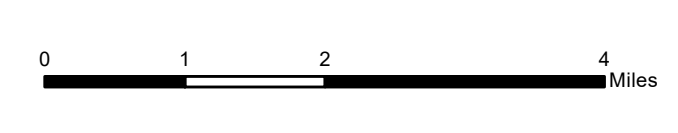


# Apalachicola National Forest Hurricane Michael Response FL-FNF-018011 Briefing Map 11/02/18



| ANF Roads by Jurisdiction |               | ANF Roads Percent Cleared      |       | ANF Fireline Cleared   |       | Acres Impacted |                        |
|---------------------------|---------------|--------------------------------|-------|------------------------|-------|----------------|------------------------|
| JURISDICTION              | Count Miles   | Roads Level 3,4,&5 Total Miles | 608.3 | Total Miles            | 473.0 | Incidental     | 460,097                |
| C - COUNTY                | 42 207.0      | 3,4,5 Miles Cleared            | 513.1 | Miles Cleared          | 20.9  | Light          | 65,470                 |
| FS - FOREST SERVICE       | 1,949 2,072.7 | 1,2 Miles Cleared              | 133.6 | Percent Cleared        | 4%    | Moderate       | 24,220                 |
| P - PRIVATE               | 3 0.6         | All Miles Cleared              | 648.9 | Update 10/28/18 @ 1540 |       | Heavy          | 24,229                 |
| S - STATE                 | 13 167.2      | Percent 3,4,5 Cleared          | 84%   |                        |       | Total          | 574,016                |
| Totals                    | 2,007 2,447.6 | Update 11/02/18 @ 0945         |       |                        |       |                | Update 10/29/18 @ 1130 |

| Trails Aerial Assessment 10/22/18 |       | RCW Clusters Assesses  |       | ANF Rec. Percentages    |     | Acres Impacted Percentages |     |
|-----------------------------------|-------|------------------------|-------|-------------------------|-----|----------------------------|-----|
| Status                            | Miles | Total                  | 887.0 | Total #                 | 74  | Incidental                 | 80% |
| High Damage                       | 12.3  | Assessed               | 705.0 | Assessed                | 92% | Light                      | 11% |
| Moderate Damage                   | 2.9   | Percent Cleared        | 79%   | Cleared                 | 57% | Moderate                   | 4%  |
| Light Damage                      | 141.3 | Update 11/01/18 @ 1845 |       | Hazard Tree Assessments | 38% | Heavy                      | 4%  |
| Not Assessed By Air               | 48.8  |                        |       | Open                    | 12% |                            |     |
| Total                             | 205.4 |                        |       | Updated 10/31/18 @ 1800 |     |                            |     |

| Helispots                 |    | ANF Trails Percent Cleared |       | ANF Rec. Sites (74 total) |    |
|---------------------------|----|----------------------------|-------|---------------------------|----|
| Total                     | 20 | Total Miles                | 205.0 | Assessed                  | 68 |
| Assessed                  | 20 | Miles Cleared              | 22.1  | Cleared                   | 42 |
| Damaged by Hurricane      | 5  | Percent Cleared            | 11%   | Hazard Tree Assessment    | 28 |
| Hurricane Damage Repaired | 2  | Update 10/26/18 @ 0730     |       | Open                      | 9  |
| Update 10/29/18 @ 2006    |    |                            |       | Updated 10/31/18 @ 1800   |    |

- Rec Site**
  - Boating Site
  - Campground
  - Camping Area
  - Day Use Area
  - Fishing Site
  - Info Site/Fee Station
  - Observation Site
  - Picnic Site
  - Swimming Site
  - Target Range
  - Trailhead
  - Wildlife Viewing Site
- Rec Site Assessment**
  - Assessed
  - Assessed & Cleared
  - Assessed, Cleared & Hazard Trees Assessed
  - Open
- Major Roads**
  - Interstate
  - Principal Arterial
  - Major Collector
  - Minor Arterial
  - Minor Collector
  - Local
- Forest Roads**
  - 5 - High Degree of User Comfort
  - 4 - Moderate Degree of User Comfort
  - 3 - Suitable For Passenger Cars
  - 2 - High Clearance Vehicles
  - 2 - High Clearance Vehicles (Admin Only)
  - 1 - Basic Custodial Care (Closed)
  - Forest Road Cleared
  - (XXX) Fireline Cleared
  - Trails
  - Trail Cleared
  - County Road
- Helispots**
  - Ready for Air Operations
  - Not Ready for Air Operations
  - Not Ready Hurricane Michael Impacts
  - Work\_Center
  - ANF Inholdings Unofficial
  - Emergency Response Divisions
- Cluster\_Assessment**
  - RCW Assessment complete
  - RCW Assessment not complete
  - Forest Boundary (Unofficial)
  - County Boundary (Florida)
- OWNER**
  - USFWS
  - Local
  - Private
  - State

This map was produced by the SA Red Team GIS on 11/2/2018 at 1205 Hours.  
Data Projection: NAD\_1983\_StatePlane\_Florida\_North\_FIPS\_0003\_Feet

