

# Daily Operations

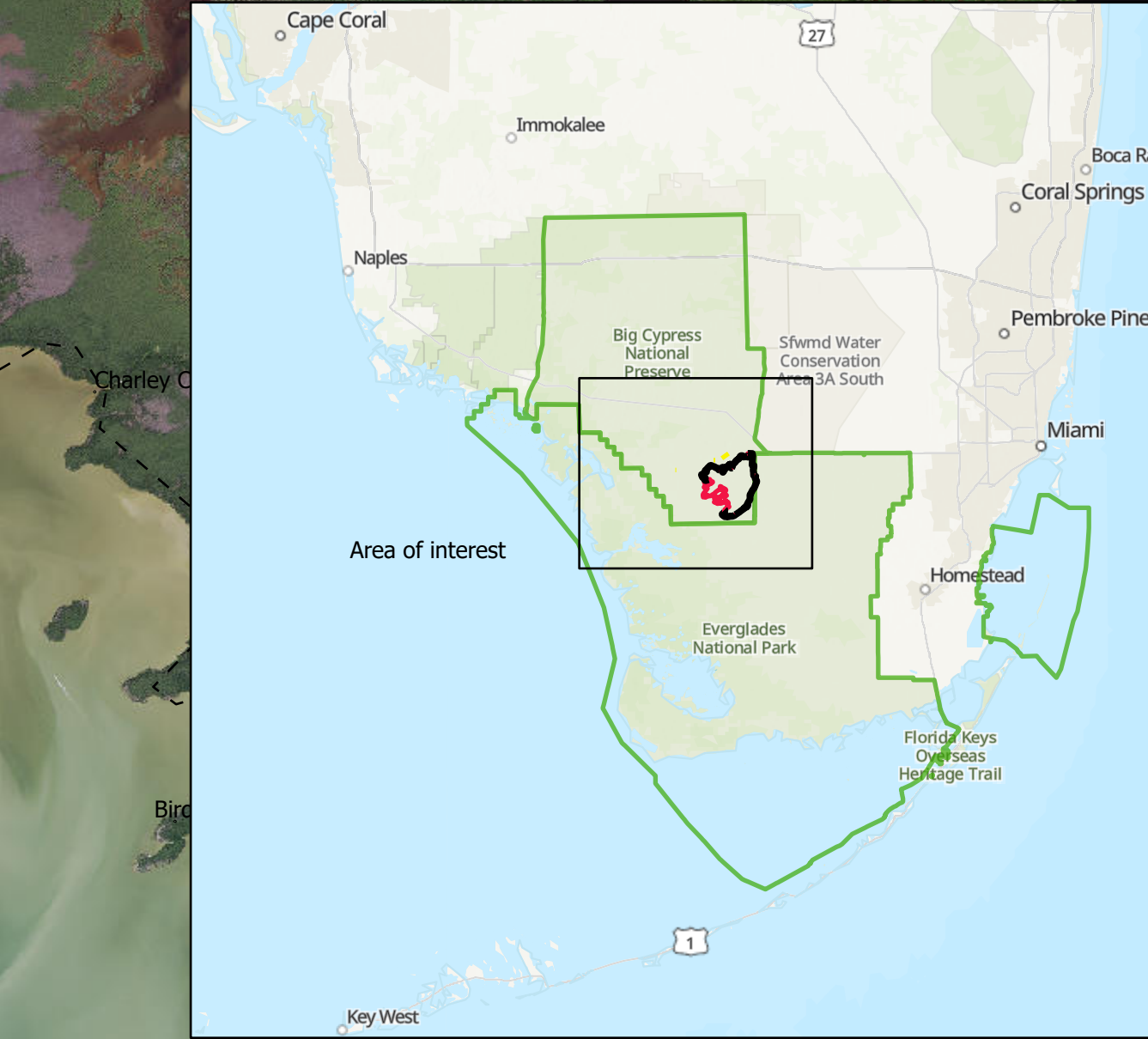
Moonfish Wildfire  
BICY/EVER  
5/18/2020

25,834 acres at 20200517 @ 1500

- Controlled fire line
- Uncontrolled fire line
- Mechanized equipment line
- Incident command post
- Loop Rd Staging area
- Helicopter landing spot
- Water Source
- Division Break
- Drop Point
- Hot spot
- Structure
- South Florida National Parks boundary
- Florida County boundary
- Microsinks MRA
- Major Canals
- Airboat trails
- Sensitive Hammock Fire Sensitive Hammock
- BICY Campsites
- South Florida Monitoring Stations
- Rain
- Stage
- Water quality
- NPS Buildings and Structures
  - NPS Buildings
  - EVER / ENP Hydro Monitoring Stations
- SFWMD
  - SFWMD Structure
  - RCW\_Trees

SER\_TRANS\_ParkRoadParkingLot

- Park Roads
- SER Trails
- Airboat trails
- Sensitive Hammock Fire Sensitive Hammock
- BICY Campsites
- South Florida Monitoring Stations
- Rain
- Stage
- Water quality
- NPS Buildings and Structures
  - NPS Buildings
  - EVER / ENP Hydro Monitoring Stations
- SFWMD
  - SFWMD Structure
  - RCW\_Trees



Map Source: Everglades Fire and Aviation  
5/17/2020 1536  
25,834 Acres from GPS  
WGS 1984 Datum, Lat, Lon Srd

