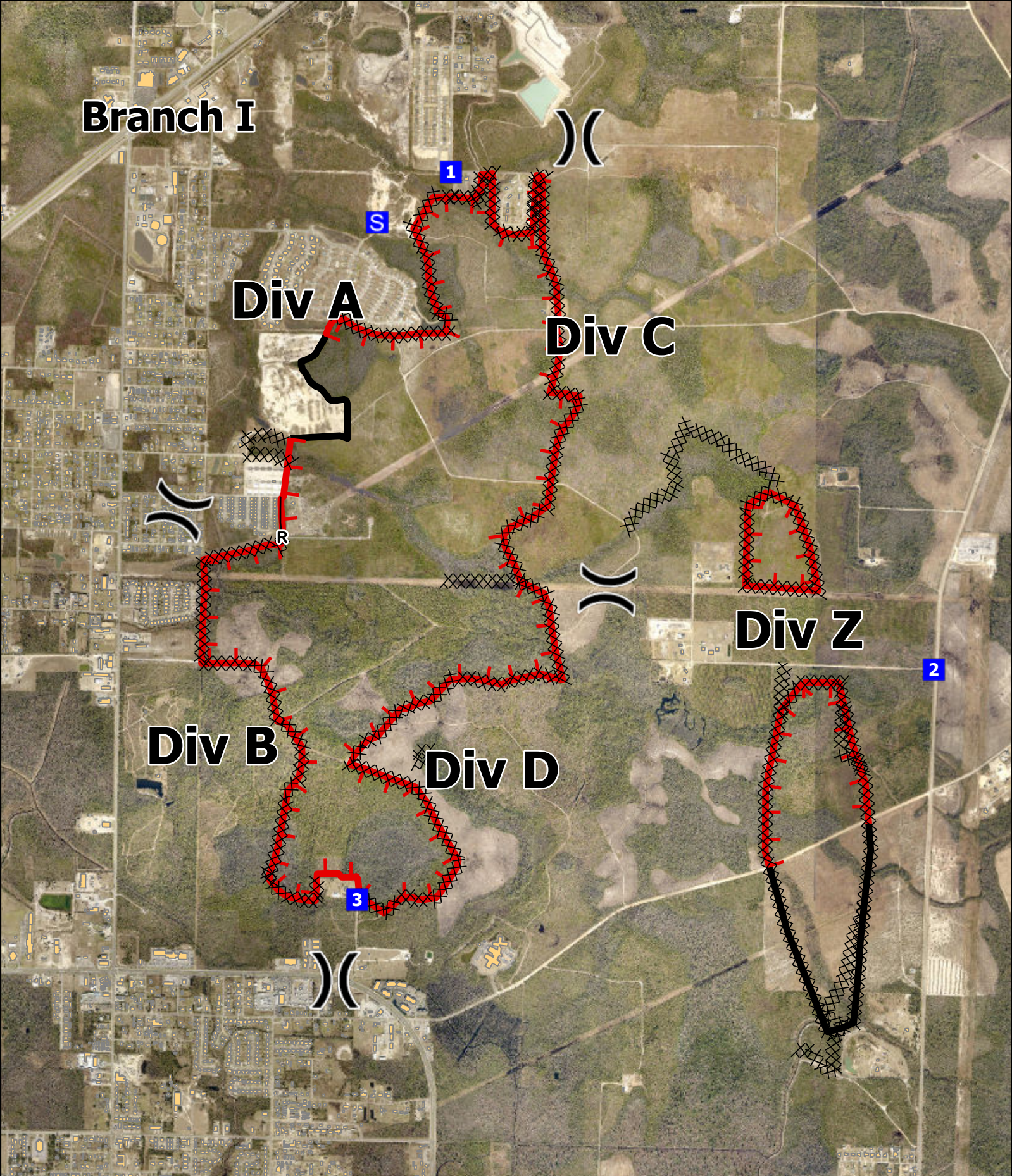


Branch I



Div A

Div C

Div Z

Div B

Div D

ADKINS AVENUE STAR AVENUE

FL-FLS-22020022
Perimeter as of 03/08/2022 1830
Approximate Acres: 1,069

**IAP
MAP**
03/09/2022

-) (Division Break
- Drop Point
- S Staging Area
- Hot Spot - Spot Fire
- ×× Completed Dozer Line

- R— Completed Road as Line
- ▬ Fire Edge (Field Collection)
- ▬ Contained
- ▬ Uncontained
- Structure footprint



1:24,000

DISCLAIMER
This map is the product of the Florida Forest Service. No warranties are provided for data therein, its use, or its interpretation.

Map Updated: 3/8/2022 8:41 PM

