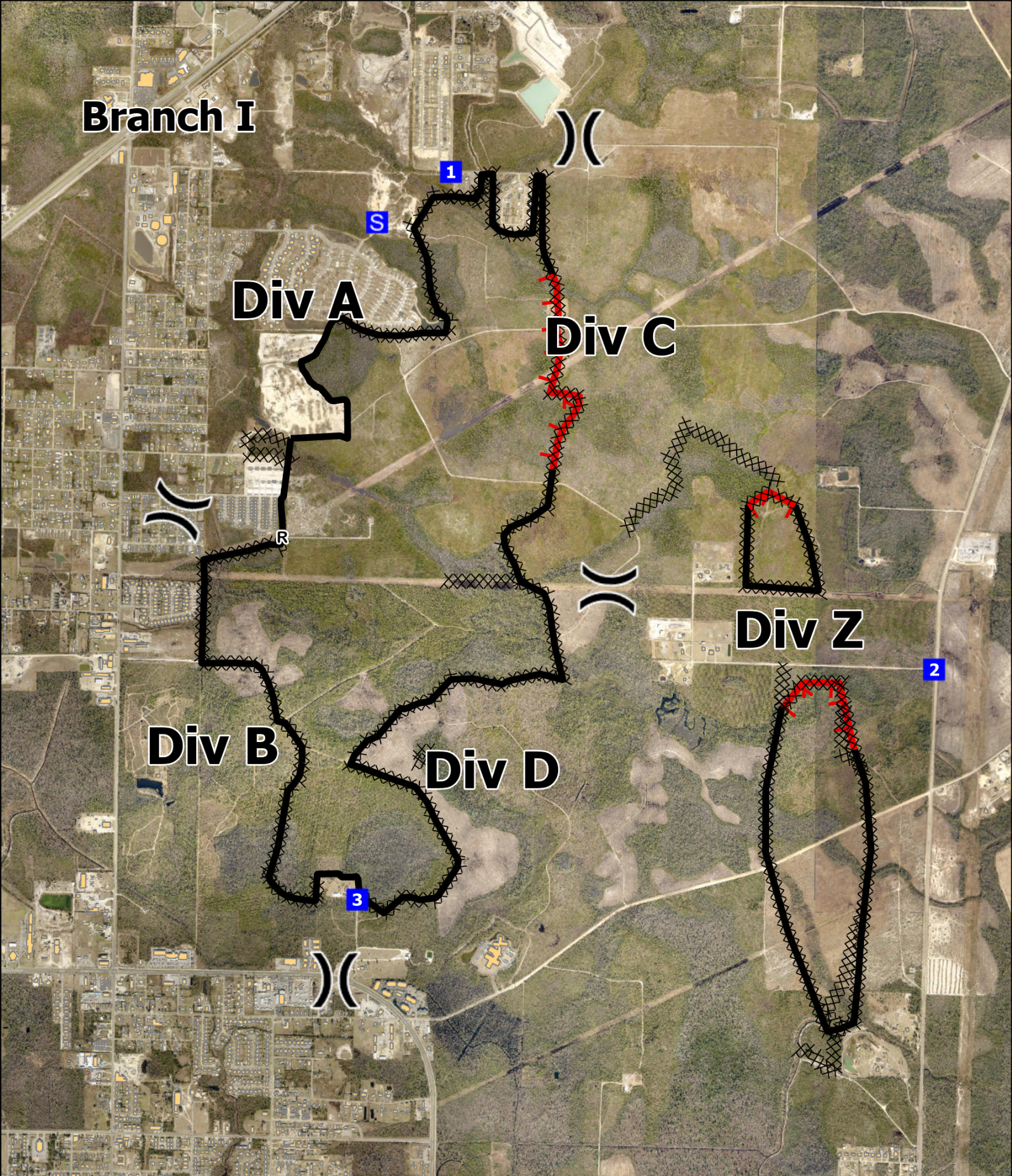


Branch I



ADKINS AVENUE STAR AVENUE

FL-FLS-22-026
Perimeter as of 03/11/2022 0800
Approximate Acres: 1,069

IAP
MAP
03/11/2022

-) (Division Break
- Drop Point
- Staging Area
- XX Completed Dozer Line

- R— Completed Road as Line
- Contained
- ▨ Uncontained
- Structure footprint



1:24,000

DISCLAIMER
This map is the product of the Florida Forest Service. No warranties are provided for data therein, its use, or its interpretation.

Map Updated: 3/10/2022 6:21 PM

