

**Clear Lake Wildfire**  
 Wakulla Ranger District  
 Apalachicola National Forest  
**Burn Unit 228 & 229**  
 Wildfire Acres: 4,094  
 Total Burn Unit Acres: 5,608  
 Upland Acres: 4,210  
 Fire Perimeter GPS @ 1800 Hrs

- Dip Site
- RCW Trees (live only)
- RCW Cluster
- Apiary
- Trails
- Control Line - Road
- Boundary - Natural Feature
- Historic Wildfire Perimeter (since 2017)
- Wilderness
- Sapling Pines
- Timber Sale Units
- Fire Perimeter

**Burn Unit Info**

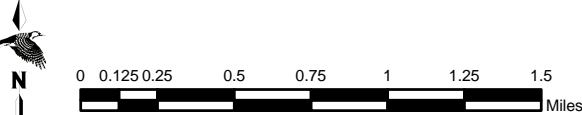
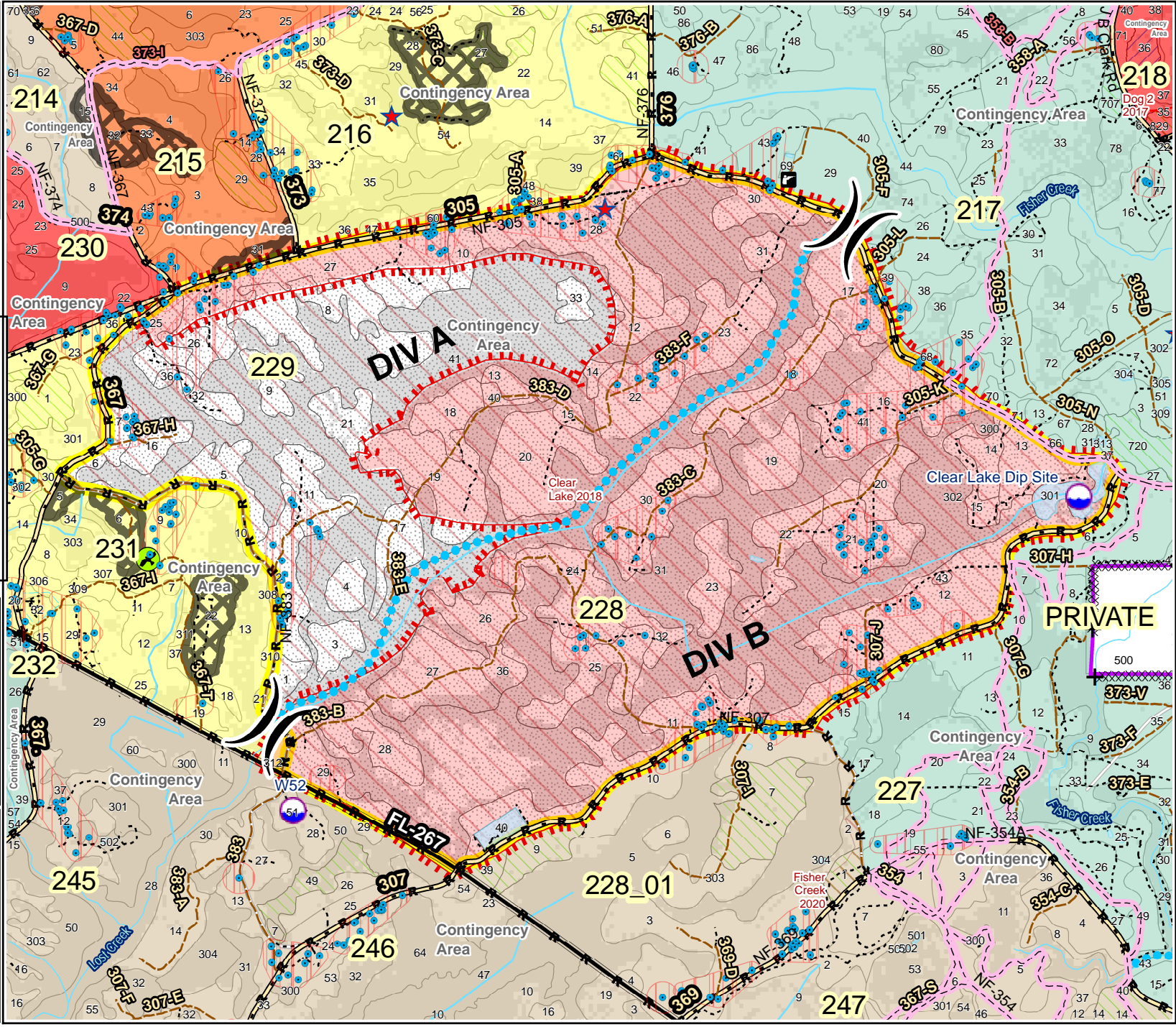
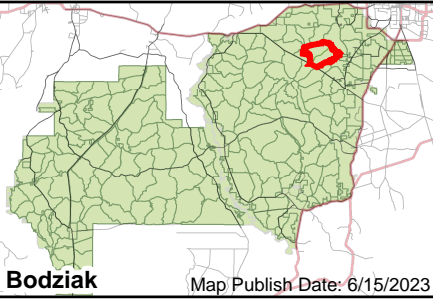
|  |              |
|--|--------------|
|  | Burn Unit    |
|  | Pvt. Private |
|  | USFS No Burn |

**Burnable Area**

|  |                           |
|--|---------------------------|
|  | Did not burn last 20 yrs  |
|  | Burned during last 20 yrs |

**Adjacent Unit Yrs. Since Last Burn**

|  |       |
|--|-------|
|  | 0-1   |
|  | 1-2   |
|  | 2-3   |
|  | 3-4   |
|  | 4-5   |
|  | 5-10  |
|  | 11-13 |



BurnDate \_\_\_\_\_ Tr.Winds \_\_\_\_\_ Temp \_\_\_\_\_ Mix Ht. \_\_\_\_\_  
 RH \_\_\_\_\_ Disp. Index \_\_\_\_\_ Wind \_\_\_\_\_ KBDI \_\_\_\_\_  
 DSR \_\_\_\_\_ RX Position \_\_\_\_\_ Burn Boss \_\_\_\_\_