





PIO Map

Clear Lake Fire
Leon County
Wakulla Ranger District
Apalachicola National Forest
Wildfire Acres: 4,094
Fire Perimeter GPS @1800 Hrs on 6/14/23

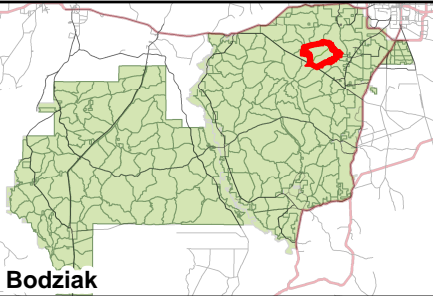
-  Fire Perimeter
-  Fire Operation Area
-  Burn Block
-  Wilderness

This map was produced by the Prescribed Burn Map on 6/15/2023.

This product is reproduced from geospatial information prepared by the U.S. Department of Agriculture, Forest Service. GIS data and product accuracy may vary. They may be: developed from sources of differing accuracy, accurate only at certain scales, based on modeling or interpretation, incomplete while being created or revised, etc. Using GIS products for purposes other than those for which they were created may yield inaccurate or misleading results. The Forest Service reserves the right to correct, update, modify, or replace GIS products without notification.

For more information, contact: Apalachicola National Forest (850) 926-3561. 57 Taff Drive, Crawfordville, FL 32327.

Data Projection: NAD_1983_StatePlane_Florida_North_FIPS_0903_Feet



Map Publish Date: 6/15/2023

