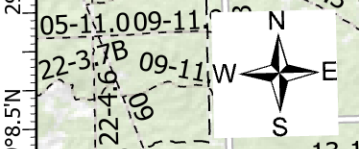
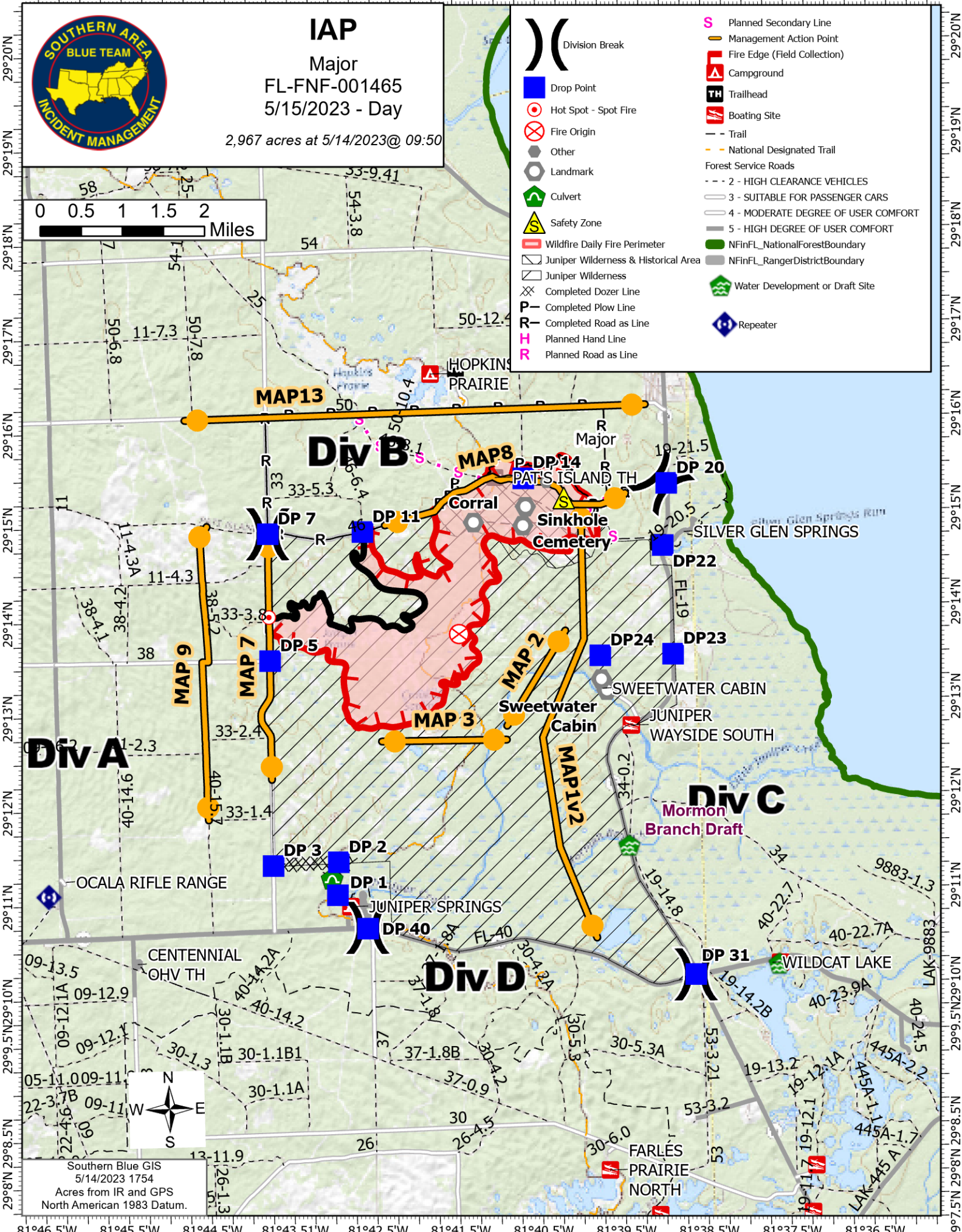
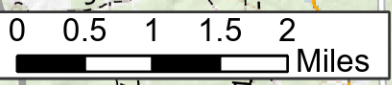


81°46'W 81°45'W 81°44'W 81°43'W 81°42'W 81°41'W 81°40'W 81°39'W 81°38'W 81°37'W 81°36.01'W



IAP
Major
FL-FNF-001465
5/15/2023 - Day
2,967 acres at 5/14/2023@ 09:50

- Division Break
- Drop Point
- Hot Spot - Spot Fire
- Fire Origin
- Other
- Landmark
- Culvert
- Safety Zone
- Wildfire Daily Fire Perimeter
- Juniper Wilderness & Historical Area
- Juniper Wilderness
- Completed Dozer Line
- Completed Plow Line
- Completed Road as Line
- Planned Hand Line
- Planned Road as Line
- Planned Secondary Line
- Management Action Point
- Fire Edge (Field Collection)
- Campground
- Trailhead
- Boating Site
- Trail
- National Designated Trail
- Forest Service Roads
- 2 - HIGH CLEARANCE VEHICLES
- 3 - SUITABLE FOR PASSENGER CARS
- 4 - MODERATE DEGREE OF USER COMFORT
- 5 - HIGH DEGREE OF USER COMFORT
- NFinFL National Forest Boundary
- NFinFL Ranger District Boundary
- Water Development or Draft Site
- Repeater



Southern Blue GIS
5/14/2023 1754
Acres from IR and GPS
North American 1983 Datum.

81°46.5'W 81°45.5'W 81°44.5'W 81°43.5'W 81°42.5'W 81°41.5'W 81°40.5'W 81°39.5'W 81°38.5'W 81°37.5'W 81°36.5'W

29°20'N
29°19'N
29°18'N
29°17'N
29°16'N
29°15'N
29°14'N
29°13'N
29°12'N
29°11'N
29°10'N
29°9.5'N
29°9'N
29°8.5'N
29°8'N
29°7.5'N