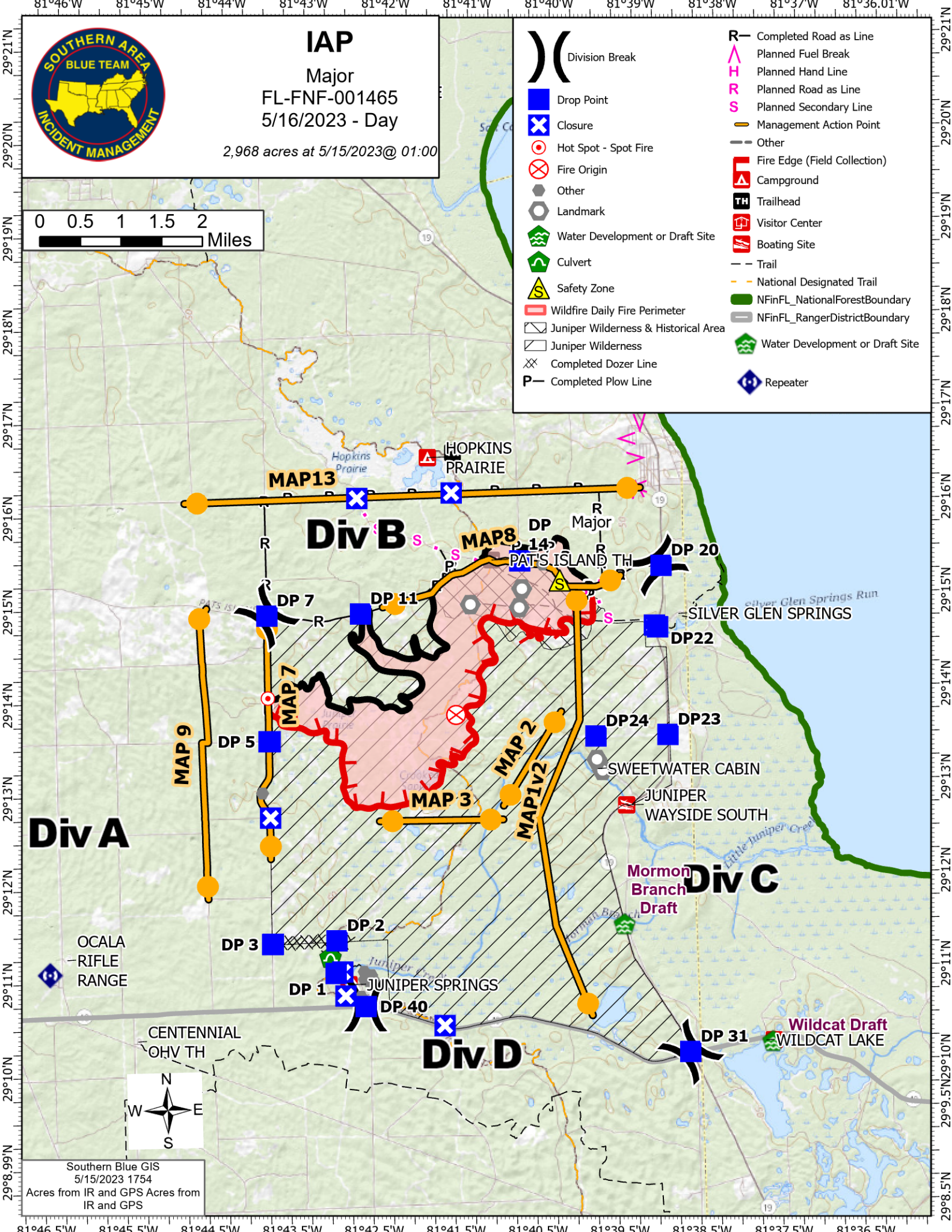
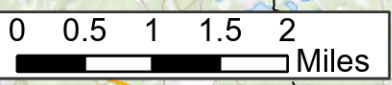


81°46'W 81°45'W 81°44'W 81°43'W 81°42'W 81°41'W 81°40'W 81°39'W 81°38'W 81°37'W 81°36.01'W



**IAP**  
Major  
FL-FNF-001465  
5/16/2023 - Day  
2,968 acres at 5/15/2023@ 01:00

- Division Break
- Drop Point
- Closure
- Hot Spot - Spot Fire
- Fire Origin
- Other
- Landmark
- Water Development or Draft Site
- Culvert
- Safety Zone
- Wildfire Daily Fire Perimeter
- Juniper Wilderness & Historical Area
- Juniper Wilderness
- Completed Dozer Line
- Completed Plow Line
- Completed Road as Line
- Planned Fuel Break
- Planned Hand Line
- Planned Road as Line
- Planned Secondary Line
- Management Action Point
- Other
- Fire Edge (Field Collection)
- Campground
- Trailhead
- Visitor Center
- Boating Site
- Trail
- National Designated Trail
- NFinFL\_NationalForestBoundary
- NFinFL\_RangerDistrictBoundary
- Water Development or Draft Site
- Repeater



**Div A**

**Div B**

**Div C**

**Div D**

OCALA RIFLE RANGE

CENTENNIAL OHV TH



Southern Blue GIS  
5/15/2023 1754  
Acres from IR and GPS Acres from IR and GPS

81°46.5'W 81°45.5'W 81°44.5'W 81°43.5'W 81°42.5'W 81°41.5'W 81°40.5'W 81°39.5'W 81°38.5'W 81°37.5'W 81°36.5'W

29°21'N 29°20'N 29°19'N 29°18'N 29°17'N 29°16'N 29°15'N 29°14'N 29°13'N 29°12'N 29°11'N 29°10'N 29°9.5'N 29°9'N 29°8.5'N