

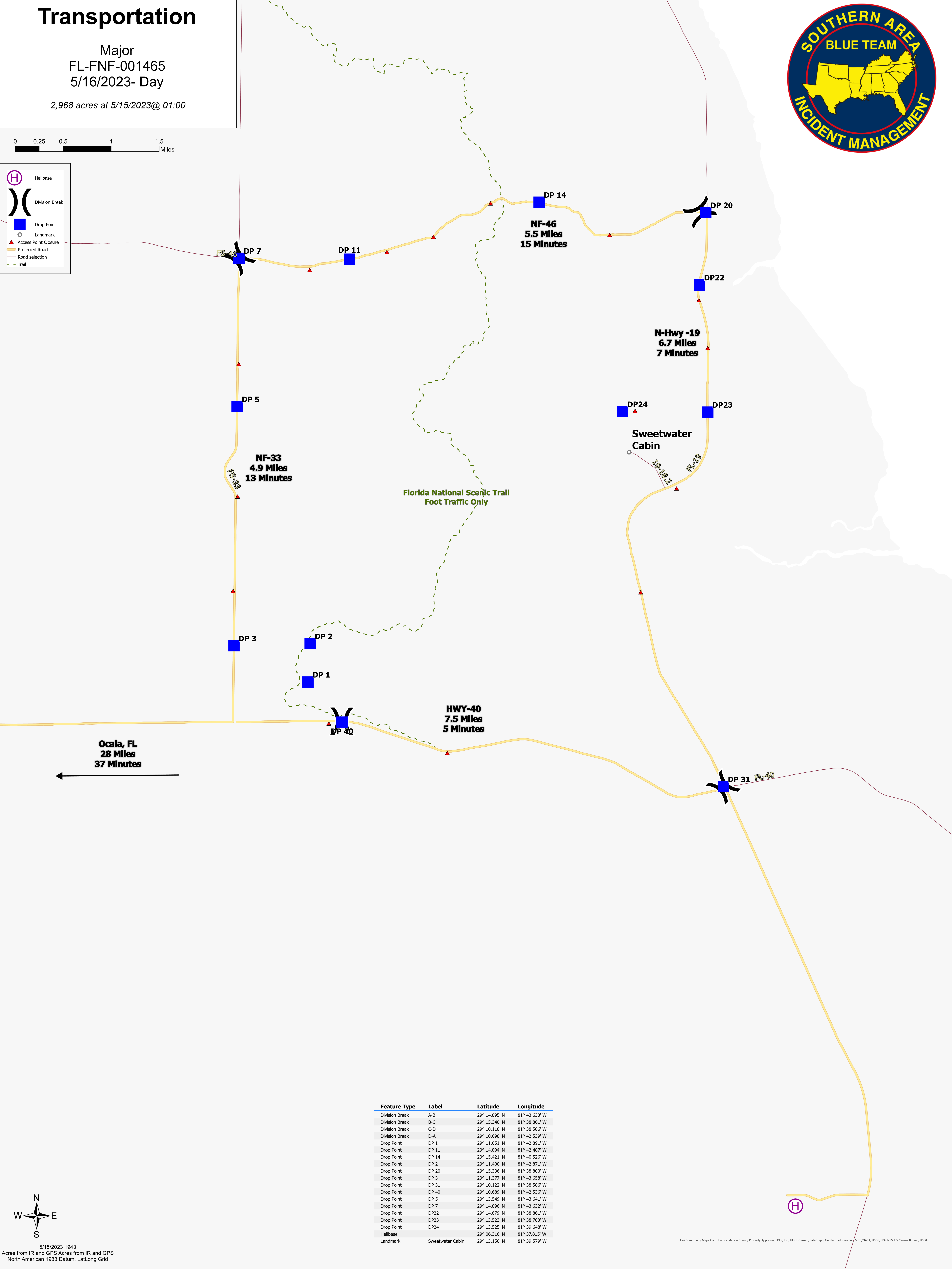
Transportation

Major
FL-FNF-001465
5/16/2023- Day

2,968 acres at 5/15/2023@ 01:00



Helibase
 Division Break
 Drop Point
 Landmark
 Access Point Closure
 Preferred Road
 Road selection
 Trail



Ocala, FL
28 Miles
37 Minutes

Florida National Scenic Trail
Foot Traffic Only

Sweetwater
Cabin

Feature Type	Label	Latitude	Longitude
Division Break	A-B	29° 14.895' N	81° 43.633' W
Division Break	B-C	29° 15.340' N	81° 38.861' W
Division Break	C-D	29° 10.118' N	81° 38.586' W
Division Break	D-A	29° 10.698' N	81° 42.539' W
Drop Point	DP 1	29° 11.051' N	81° 42.891' W
Drop Point	DP 11	29° 14.894' N	81° 42.487' W
Drop Point	DP 14	29° 15.421' N	81° 40.526' W
Drop Point	DP 2	29° 11.400' N	81° 42.871' W
Drop Point	DP 20	29° 15.336' N	81° 38.800' W
Drop Point	DP 3	29° 11.377' N	81° 43.658' W
Drop Point	DP 31	29° 10.122' N	81° 38.586' W
Drop Point	DP 40	29° 10.689' N	81° 42.536' W
Drop Point	DP 5	29° 13.549' N	81° 43.641' W
Drop Point	DP 7	29° 14.896' N	81° 43.632' W
Drop Point	DP22	29° 14.679' N	81° 38.861' W
Drop Point	DP23	29° 13.523' N	81° 38.768' W
Drop Point	DP24	29° 13.525' N	81° 39.648' W
Helibase		29° 06.316' N	81° 37.815' W
Landmark	Sweetwater Cabin	29° 13.156' N	81° 39.579' W



5/15/2023 1943
Acres from IR and GPS Acres from IR and GPS
North American 1983 Datum, Lat/Long Grid

Eri Community Maps Contributors, Marion County Property Appraiser, FDP, Eri, HERE, Garmin, SafeGraph, GeoTechnologies, Inc, METI/NASA, USGS, EPA, NPS, US Census Bureau, USDA