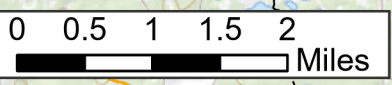


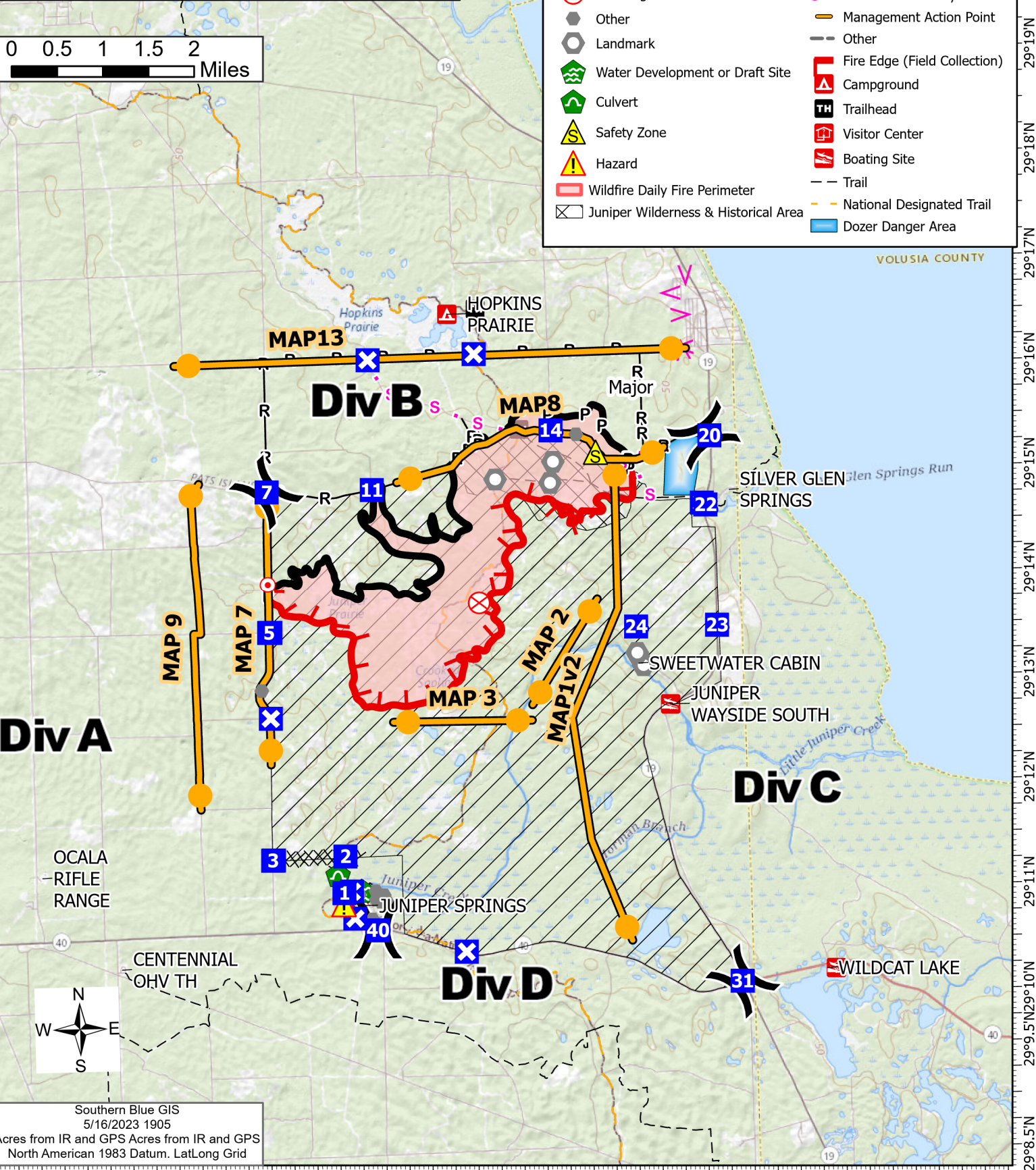
81°46'W 81°45'W 81°44'W 81°43'W 81°42'W 81°41'W 81°40'W 81°39'W 81°38'W 81°37'W 81°36.01'W



IAP
Major
FL-FNF-001465
5/17/2023 - Day
2,978 acres at 5/16/2023@ 01:30



- Division Break
- Drop Point
- Closure
- Hot Spot - Spot Fire
- Fire Origin
- Other
- Landmark
- Water Development or Draft Site
- Culvert
- Safety Zone
- Hazard
- Wildfire Daily Fire Perimeter
- Juniper Wilderness & Historical Area
- Juniper Wilderness
- Completed Dozer Line
- Completed Plow Line
- Completed Road as Line
- Planned Fuel Break
- Planned Hand Line
- Planned Road as Line
- Planned Secondary Line
- Management Action Point
- Other
- Fire Edge (Field Collection)
- Campground
- Trailhead
- Visitor Center
- Boating Site
- Trail
- National Designated Trail
- Dozer Danger Area



VOLUSIA COUNTY

OCALA RIFLE RANGE

CENTENNIAL OHV TH



Southern Blue GIS
5/16/2023 1905
Acres from IR and GPS Acres from IR and GPS
North American 1983 Datum. Lat/Long Grid

81°46.5'W 81°45.5'W 81°44.5'W 81°43.5'W 81°42.5'W 81°41.5'W 81°40.5'W 81°39.5'W 81°38.5'W 81°37.5'W 81°36.5'W