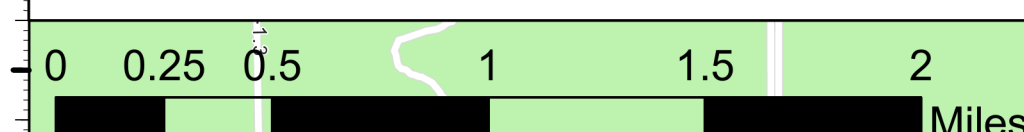


Transportation

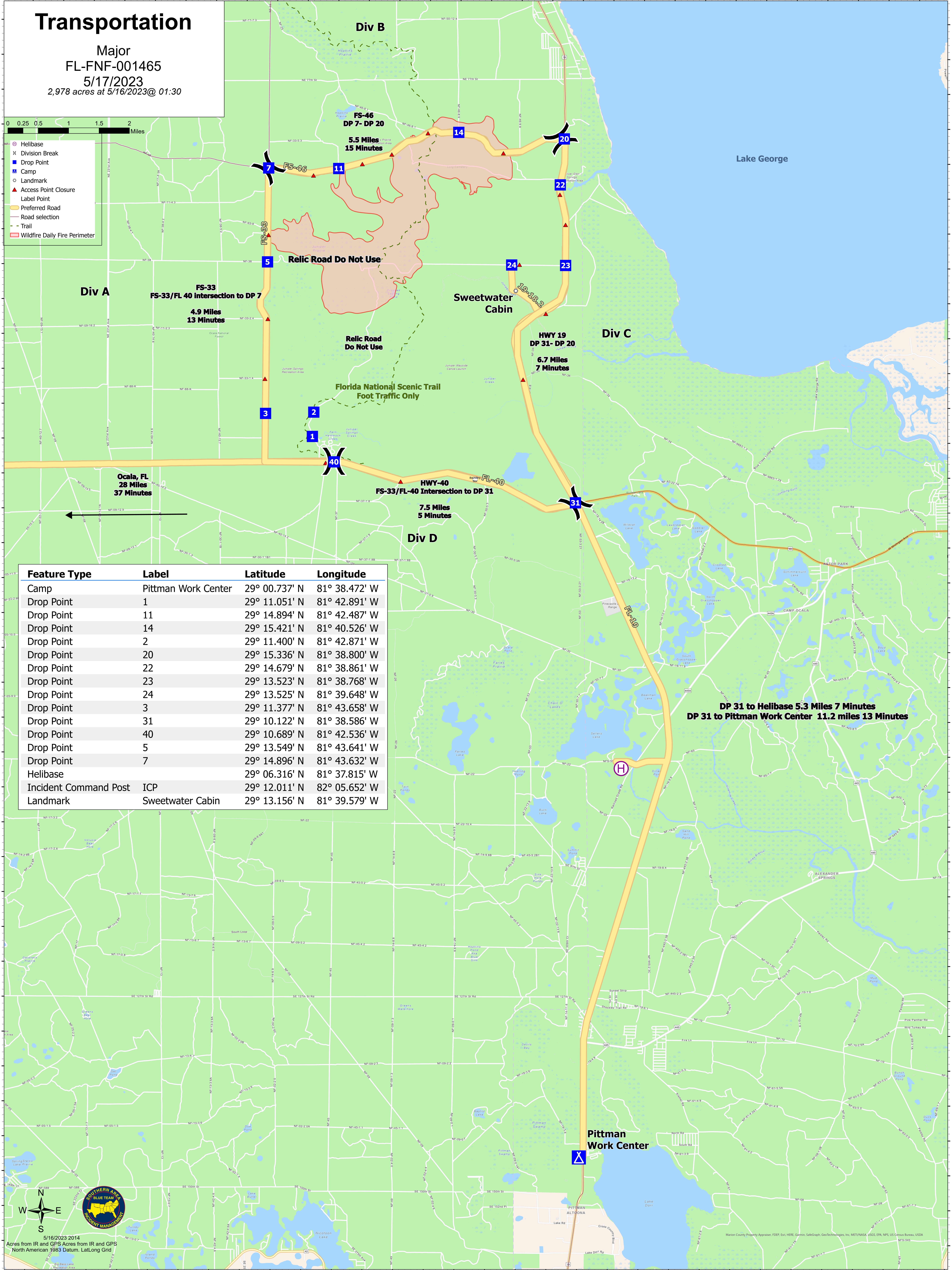
Major
FL-FNF-001465

5/17/2023

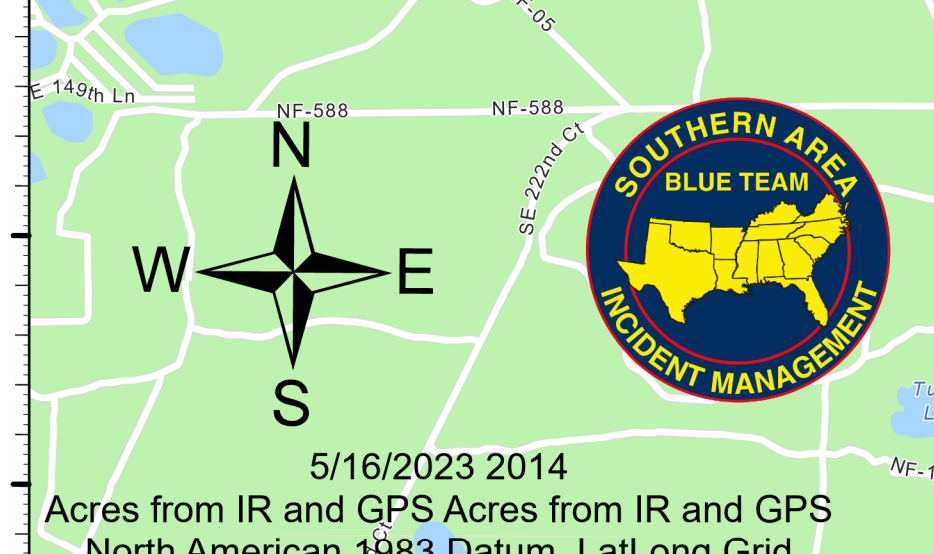
2,978 acres at 5/16/2023@ 01:30



- Helibase
- Division Break
- Drop Point
- Camp
- Landmark
- Access Point Closure
- Label Point
- Preferred Road
- Road selection
- Trail
- Wildfire Daily Fire Perimeter



Feature Type	Label	Latitude	Longitude
Camp	Pittman Work Center	29° 00.737' N	81° 38.472' W
Drop Point	1	29° 11.051' N	81° 42.891' W
Drop Point	11	29° 14.894' N	81° 42.487' W
Drop Point	14	29° 15.421' N	81° 40.526' W
Drop Point	2	29° 11.400' N	81° 42.871' W
Drop Point	20	29° 15.336' N	81° 38.800' W
Drop Point	22	29° 14.679' N	81° 38.861' W
Drop Point	23	29° 13.523' N	81° 38.768' W
Drop Point	24	29° 13.525' N	81° 39.648' W
Drop Point	3	29° 11.377' N	81° 43.658' W
Drop Point	31	29° 10.122' N	81° 38.586' W
Drop Point	40	29° 10.689' N	81° 42.536' W
Drop Point	5	29° 13.549' N	81° 43.641' W
Drop Point	7	29° 14.896' N	81° 43.632' W
Helibase		29° 06.316' N	81° 37.815' W
Incident Command Post	ICP	29° 12.011' N	82° 05.652' W
Landmark	Sweetwater Cabin	29° 13.156' N	81° 39.579' W



5/16/2023 2014
Acres from IR and GPS Acres from IR and GPS
North American 1983 Datum, Lat/Long Grid

DP 31 to Helibase 5.3 Miles 7 Minutes
DP 31 to Pittman Work Center 11.2 miles 13 Minutes

Pittman Work Center

Marion County Property Appraiser, FDEP, Evir, HERE, Garmin, SafeGraph, GeoTechniques, Inc, METUNASA, USGS, EPA, NPS, US Census Bureau, USDA