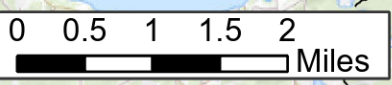


81°47'W 81°46'W 81°45'W 81°44'W 81°43'W 81°42'W 81°41'W 81°40'W 81°39'W 81°38'W 81°37'W 81°36.01'W

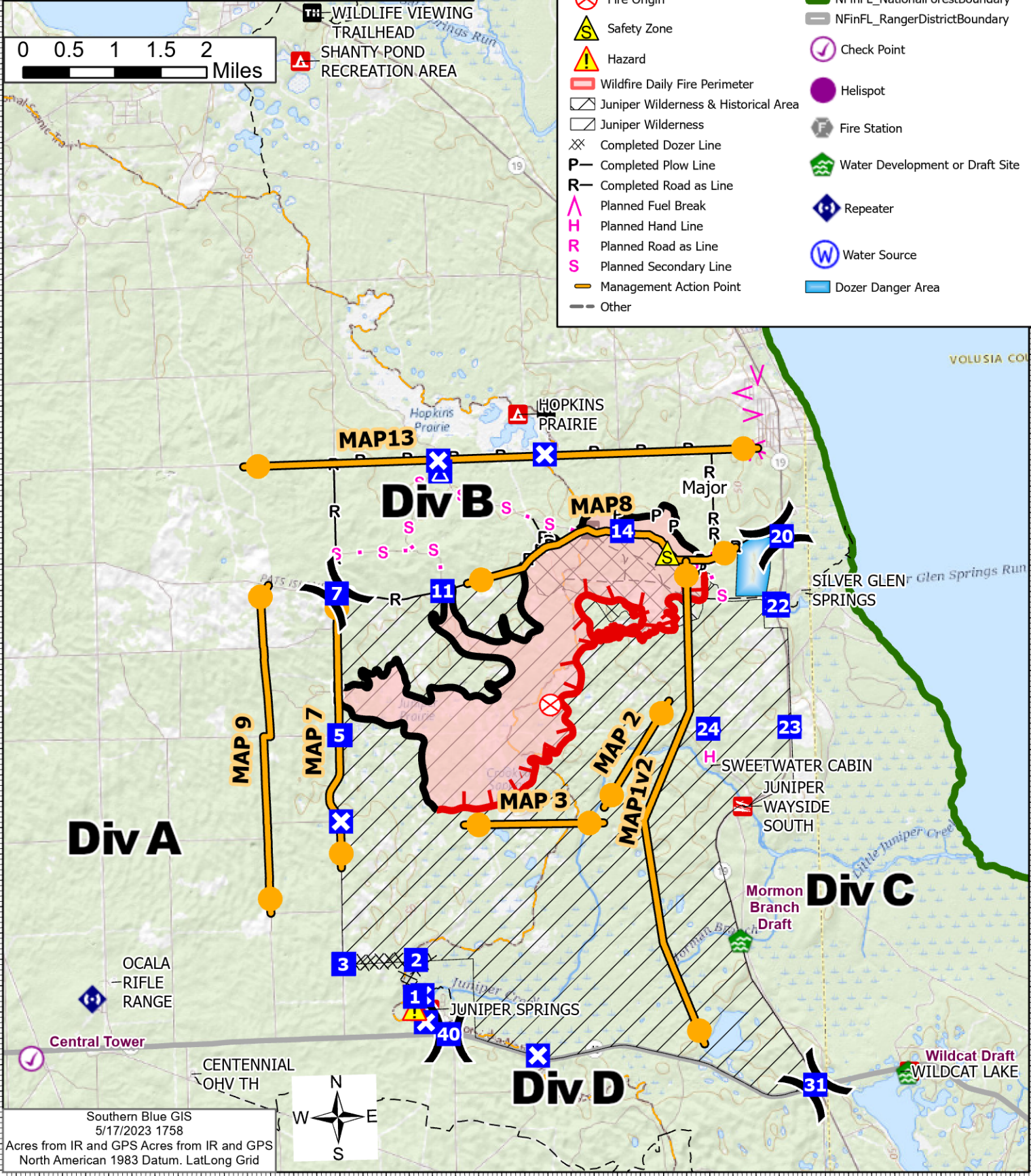
29°22'N 29°21'N 29°20'N 29°19'N 29°18'N 29°17'N 29°16'N 29°15'N 29°14'N 29°13'N 29°12'N 29°11'N 29°10'N 29°9.5'N



IAP
Major
FL-FNF-001465
5/18/2023 - Day
3,042 acres at 5/17/2023@ 01:00



- Division Break
- Drop Point
- Closure
- Camp
- Fire Origin
- Safety Zone
- Hazard
- Wildfire Daily Fire Perimeter
- Juniper Wilderness & Historical Area
- Juniper Wilderness
- Completed Dozer Line
- Completed Plow Line
- Completed Road as Line
- Planned Fuel Break
- Planned Hand Line
- Planned Road as Line
- Planned Secondary Line
- Management Action Point
- Other
- Fire Edge (Field Collection)
- Campground
- Trailhead
- Visitor Center
- Boating Site
- Trail
- National Designated Trail
- NFinFL_NationalForestBoundary
- NFinFL_RangerDistrictBoundary
- Check Point
- Helispot
- Fire Station
- Water Development or Draft Site
- Repeater
- Water Source
- Dozer Danger Area



Southern Blue GIS
5/17/2023 1758
Acres from IR and GPS Acres from IR and GPS
North American 1983 Datum. LatLong Grid



81°47'W 81°46'W 81°45'W 81°44'W 81°43'W 81°42'W 81°41'W 81°40'W 81°39'W 81°38'W 81°37'W