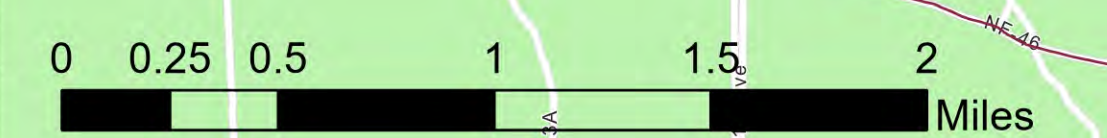


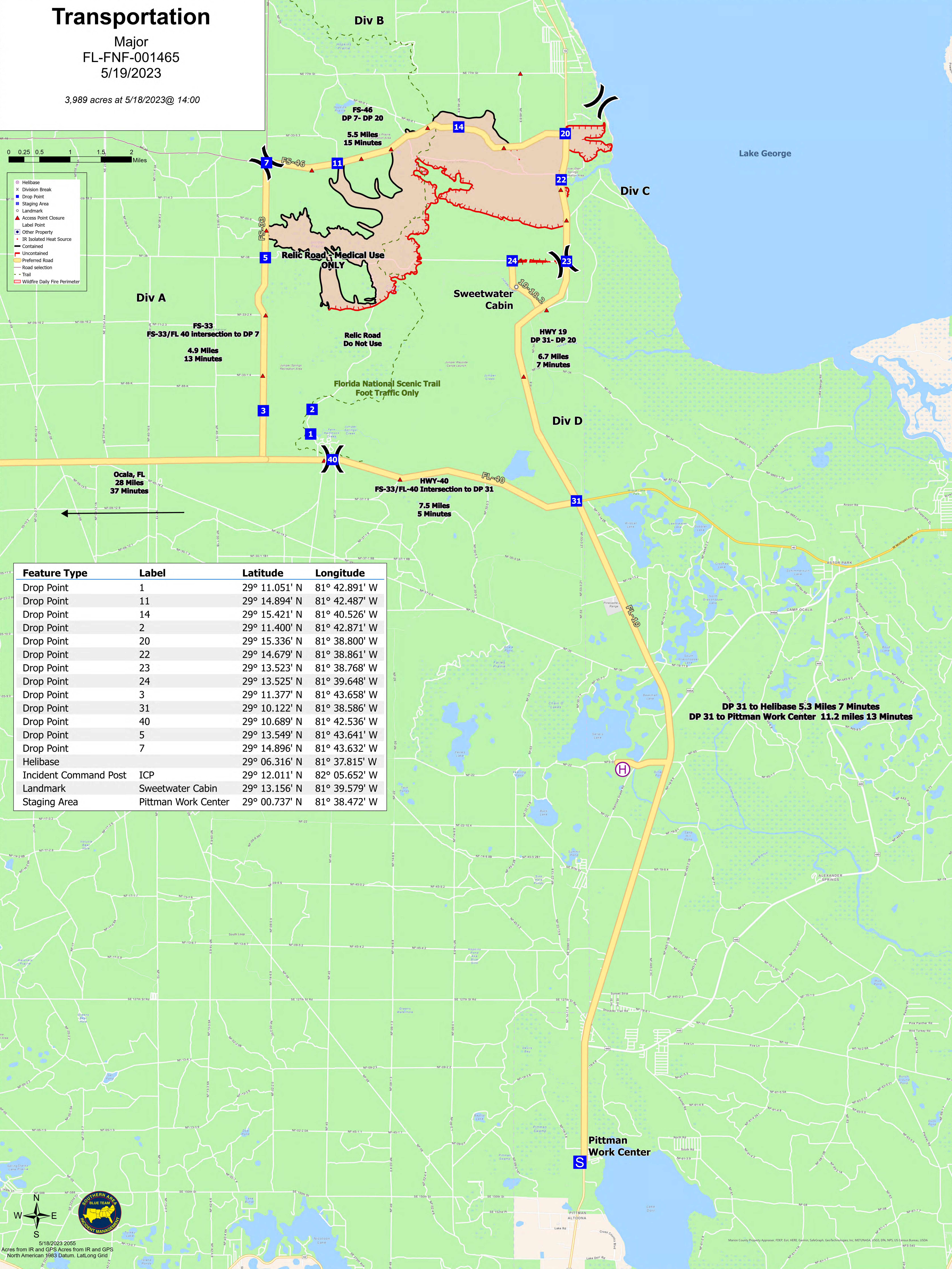
Transportation

Major
FL-FNF-001465
5/19/2023

3,989 acres at 5/18/2023@ 14:00



- Helibase
- K Division Break
- Drop Point
- Staging Area
- Landmark
- ▲ Access Point Closure
- Label Point
- Other Property
- IR Isolated Heat Source
- Contained
- Uncontained
- Preferred Road
- Road selection
- Trail
- Wildfire Daily Fire Perimeter



Feature Type	Label	Latitude	Longitude
Drop Point	1	29° 11.051' N	81° 42.891' W
Drop Point	11	29° 14.894' N	81° 42.487' W
Drop Point	14	29° 15.421' N	81° 40.526' W
Drop Point	2	29° 11.400' N	81° 42.871' W
Drop Point	20	29° 15.336' N	81° 38.800' W
Drop Point	22	29° 14.679' N	81° 38.861' W
Drop Point	23	29° 13.523' N	81° 38.768' W
Drop Point	24	29° 13.525' N	81° 39.648' W
Drop Point	3	29° 11.377' N	81° 43.658' W
Drop Point	31	29° 10.122' N	81° 38.586' W
Drop Point	40	29° 10.689' N	81° 42.536' W
Drop Point	5	29° 13.549' N	81° 43.641' W
Drop Point	7	29° 14.896' N	81° 43.632' W
Helibase		29° 06.316' N	81° 37.815' W
Incident Command Post	ICP	29° 12.011' N	82° 05.652' W
Landmark	Sweetwater Cabin	29° 13.156' N	81° 39.579' W
Staging Area	Pittman Work Center	29° 00.737' N	81° 38.472' W

DP 31 to Helibase 5.3 Miles 7 Minutes
DP 31 to Pittman Work Center 11.2 miles 13 Minutes

5/18/2023 2055
Acres from IR and GPS Acres from IR and GPS
North American 1983 Datum, Lat/Long Grid

Marion County Property Appraiser: FDEP, Evir, HERE, Garmin, SafeGraph, GeoTechnologies, Inc., METUNASIA, USGS, EPA, NPS, US Census Bureau, USDA