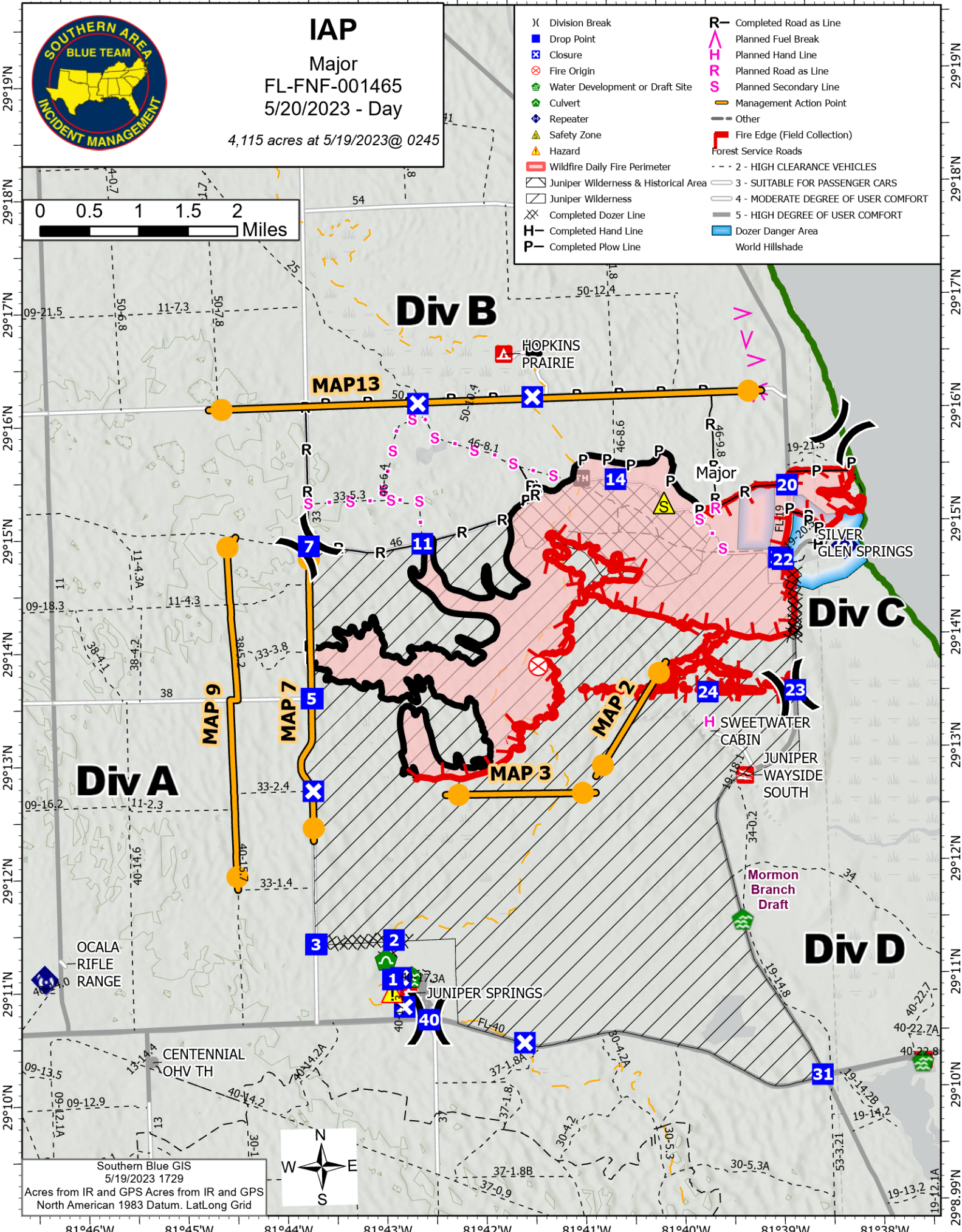
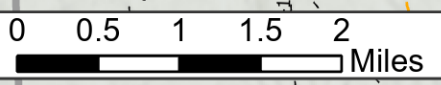


81°46'W 81°45'W 81°44'W 81°43'W 81°42'W 81°41'W 81°40'W 81°39'W 81°38'W



IAP
Major
FL-FNF-001465
5/20/2023 - Day
4,115 acres at 5/19/2023@ 0245

- X Division Break
- Drop Point
- Closure
- Fire Origin
- Water Development or Draft Site
- Culvert
- Repeater
- Safety Zone
- Hazard
- Wildfire Daily Fire Perimeter
- Juniper Wilderness & Historical Area
- Juniper Wilderness
- Completed Dozer Line
- Completed Hand Line
- Completed Plow Line
- Completed Road as Line
- Planned Fuel Break
- Planned Hand Line
- Planned Road as Line
- Planned Secondary Line
- Management Action Point
- Other
- Fire Edge (Field Collection)
- Forest Service Roads
- 2 - HIGH CLEARANCE VEHICLES
- 3 - SUITABLE FOR PASSENGER CARS
- 4 - MODERATE DEGREE OF USER COMFORT
- 5 - HIGH DEGREE OF USER COMFORT
- Dozer Danger Area
- World Hillshade



29°19'N
29°18'N
29°17'N
29°16'N
29°15'N
29°14'N
29°13'N
29°12'N
29°11'N
29°10'N
29°9.99'N

Southern Blue GIS
5/19/2023 1729
Acres from IR and GPS Acres from IR and GPS
North American 1983 Datum. Lat/Long Grid

