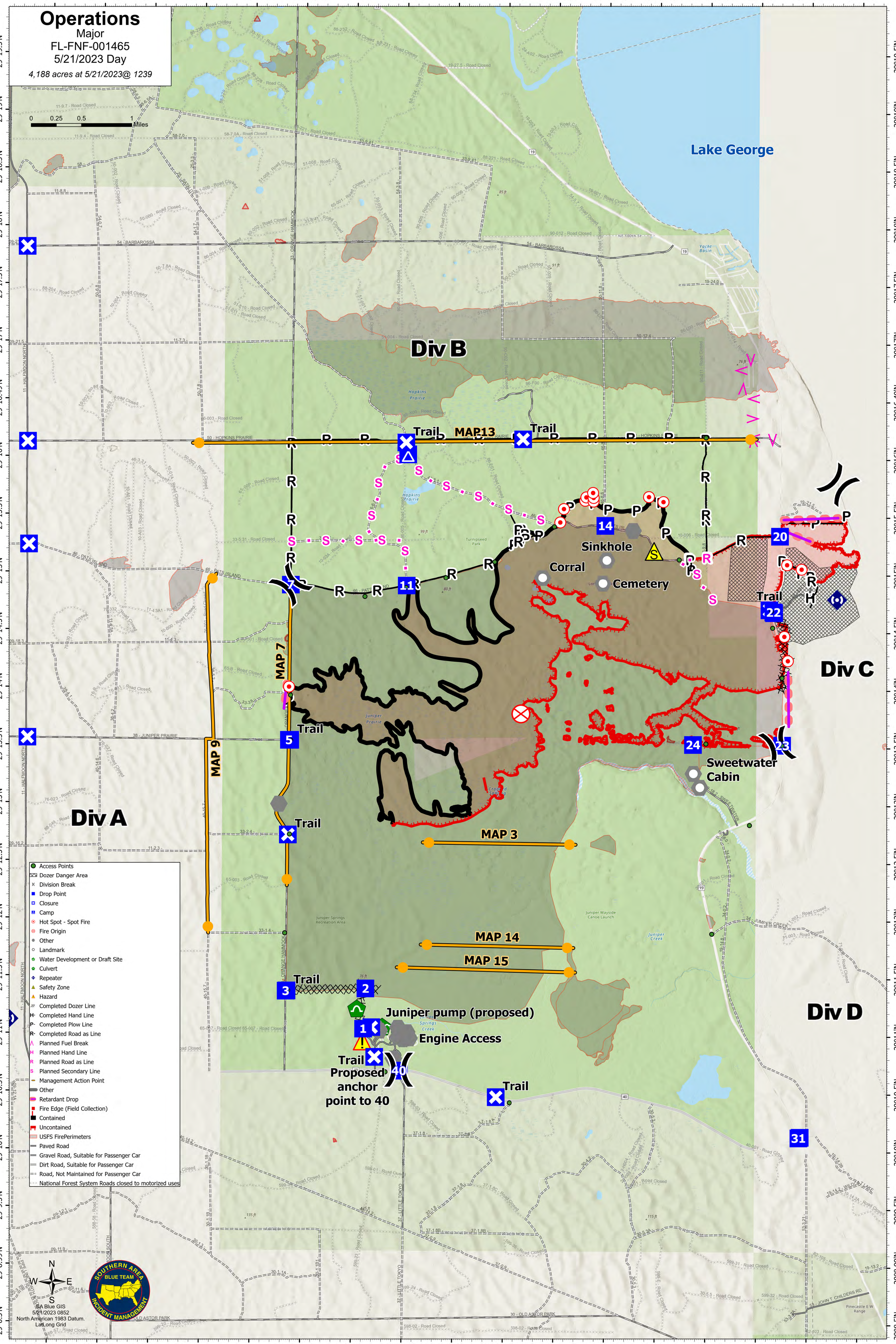


Operations

Major
FL-FNF-001465
5/21/2023 Day
4,188 acres at 5/21/2023@ 1239



- Access Points
- ⊗ Dozer Danger Area
- ⊗ Division Break
- Drop Point
- ⊗ Closure
- ⊗ Camp
- Hot Spot - Spot Fire
- Fire Origin
- Other
- Landmark
- Water Development or Draft Site
- Culvert
- Repeater
- ▲ Safety Zone
- ▲ Hazard
- ⊗ Completed Dozer Line
- ⊗ Completed Hand Line
- ⊗ Completed Plow Line
- ⊗ Planned Fuel Break
- ⊗ Planned Hand Line
- ⊗ Planned Road as Line
- ⊗ Planned Secondary Line
- ⊗ Management Action Point
- ⊗ Other
- ⊗ Retardant Drop
- ⊗ Fire Edge (Field Collection)
- ⊗ Contained
- ⊗ Uncontained
- ⊗ USFS Fire Perimeters
- ⊗ Paved Road
- ⊗ Gravel Road, Suitable for Passenger Car
- ⊗ Dirt Road, Suitable for Passenger Car
- ⊗ Road, Not Maintained for Passenger Car
- ⊗ National Forest System Roads closed to motorized uses



SA Blue GIS
5/21/2023 0852
North American 1983 Datum.
Lat, Long Grid