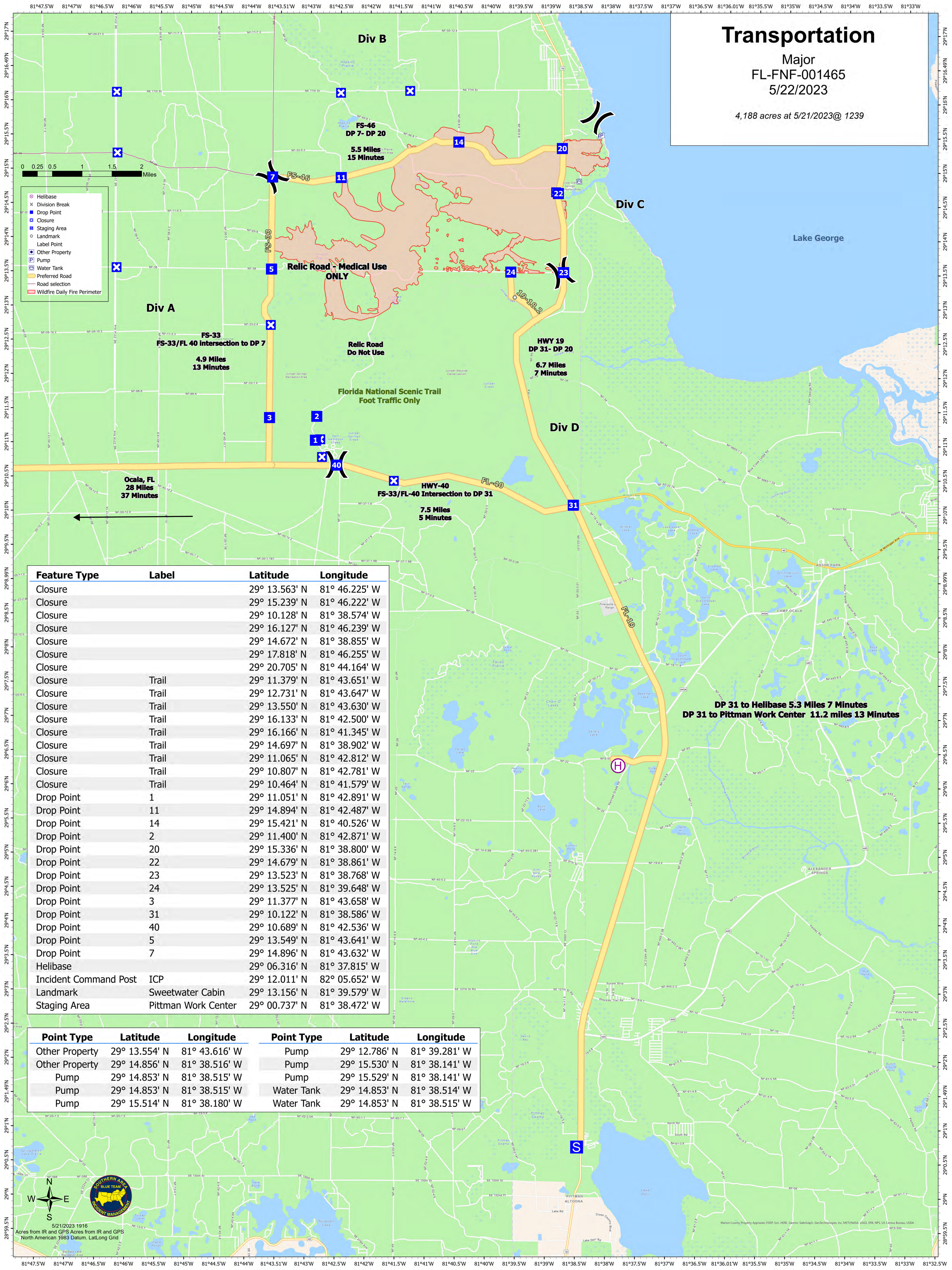


Transportation

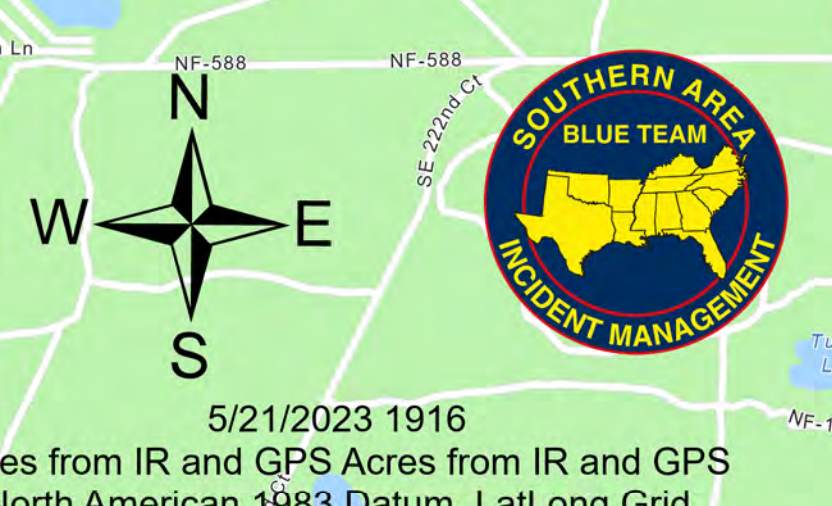
Major
FL-FNF-001465
5/22/2023

4,188 acres at 5/21/2023@ 1239



Feature Type	Label	Latitude	Longitude
Closure		29° 13.563' N	81° 46.225' W
Closure		29° 15.239' N	81° 46.222' W
Closure		29° 10.128' N	81° 38.574' W
Closure		29° 16.127' N	81° 46.239' W
Closure		29° 14.672' N	81° 38.855' W
Closure		29° 17.818' N	81° 46.255' W
Closure		29° 20.705' N	81° 44.164' W
Closure	Trail	29° 11.379' N	81° 43.651' W
Closure	Trail	29° 12.731' N	81° 43.647' W
Closure	Trail	29° 13.550' N	81° 43.630' W
Closure	Trail	29° 16.133' N	81° 42.500' W
Closure	Trail	29° 16.166' N	81° 41.345' W
Closure	Trail	29° 14.697' N	81° 38.902' W
Closure	Trail	29° 11.065' N	81° 42.812' W
Closure	Trail	29° 10.807' N	81° 42.781' W
Closure	Trail	29° 10.464' N	81° 41.579' W
Closure	Trail	29° 10.464' N	81° 41.579' W
Drop Point	1	29° 11.051' N	81° 42.891' W
Drop Point	11	29° 14.894' N	81° 42.487' W
Drop Point	14	29° 15.421' N	81° 40.526' W
Drop Point	2	29° 11.400' N	81° 42.871' W
Drop Point	20	29° 15.336' N	81° 38.800' W
Drop Point	22	29° 14.679' N	81° 38.861' W
Drop Point	23	29° 13.523' N	81° 38.768' W
Drop Point	24	29° 13.525' N	81° 39.648' W
Drop Point	3	29° 11.377' N	81° 43.658' W
Drop Point	31	29° 10.122' N	81° 38.586' W
Drop Point	40	29° 10.689' N	81° 42.536' W
Drop Point	5	29° 13.549' N	81° 43.641' W
Drop Point	7	29° 14.896' N	81° 43.632' W
Helibase		29° 06.316' N	81° 37.815' W
Incident Command Post	ICP	29° 12.011' N	82° 05.652' W
Landmark	Sweetwater Cabin	29° 13.156' N	81° 39.579' W
Staging Area	Pittman Work Center	29° 00.737' N	81° 38.472' W

Point Type	Latitude	Longitude	Point Type	Latitude	Longitude
Other Property	29° 13.554' N	81° 43.616' W	Pump	29° 12.786' N	81° 39.281' W
Other Property	29° 14.856' N	81° 38.516' W	Pump	29° 15.530' N	81° 38.141' W
Pump	29° 14.853' N	81° 38.515' W	Pump	29° 15.529' N	81° 38.141' W
Pump	29° 14.853' N	81° 38.515' W	Water Tank	29° 14.853' N	81° 38.514' W
Pump	29° 15.514' N	81° 38.180' W	Water Tank	29° 14.853' N	81° 38.515' W



Marion County Property Appraiser: FDEP, Evli, HERE, Garmin, SafeGraph, GeoTechnologies, Inc, METUNASA, USGS, EPA, NPS, US Census Bureau, USDA