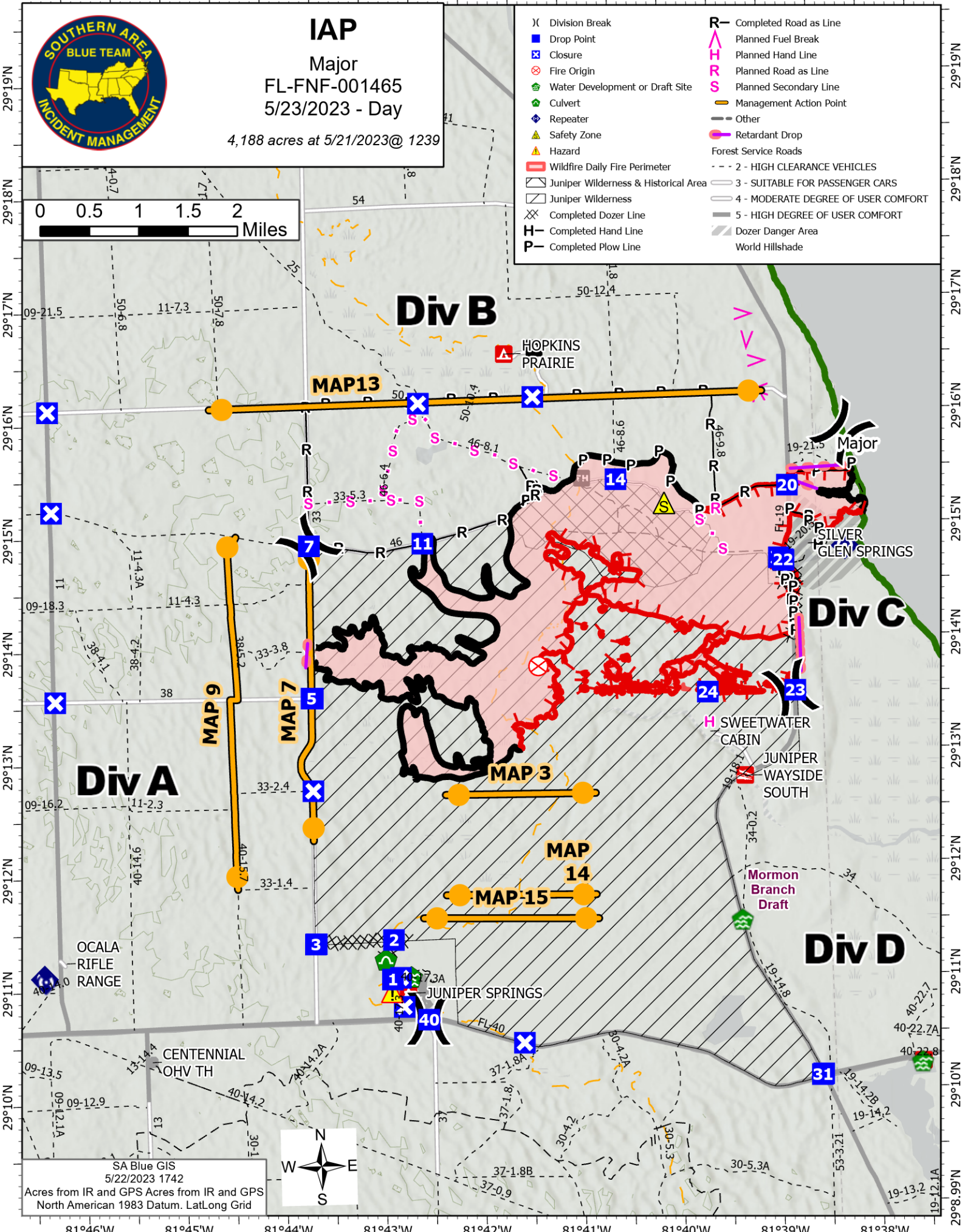
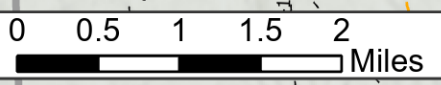


81°46'W 81°45'W 81°44'W 81°43'W 81°42'W 81°41'W 81°40'W 81°39'W 81°38'W



**IAP**  
Major  
FL-FNF-001465  
5/23/2023 - Day  
4,188 acres at 5/21/2023@ 1239

- X Division Break
- Drop Point
- Closure
- Fire Origin
- Water Development or Draft Site
- Culvert
- Repeater
- Safety Zone
- Hazard
- Wildfire Daily Fire Perimeter
- Juniper Wilderness & Historical Area
- Juniper Wilderness
- Completed Dozer Line
- Completed Hand Line
- Completed Plow Line
- Completed Road as Line
- Planned Fuel Break
- Planned Hand Line
- Planned Road as Line
- Planned Secondary Line
- Management Action Point
- Other
- Retardant Drop
- Forest Service Roads
- 2 - HIGH CLEARANCE VEHICLES
- 3 - SUITABLE FOR PASSENGER CARS
- 4 - MODERATE DEGREE OF USER COMFORT
- 5 - HIGH DEGREE OF USER COMFORT
- Dozer Danger Area
- World Hillshade



SA Blue GIS  
5/22/2023 1742  
Acres from IR and GPS Acres from IR and GPS  
North American 1983 Datum. Lat/Long Grid



29°19'N  
29°18'N  
29°17'N  
29°16'N  
29°15'N  
29°14'N  
29°13'N  
29°12'N  
29°11'N  
29°10'N  
29°9.99'N

29°19'N  
29°18'N  
29°17'N  
29°16'N  
29°15'N  
29°14'N  
29°13'N  
29°12'N  
29°11'N  
29°10'N  
29°9.99'N

81°46'W 81°45'W 81°44'W 81°43'W 81°42'W 81°41'W 81°40'W 81°39'W 81°38'W