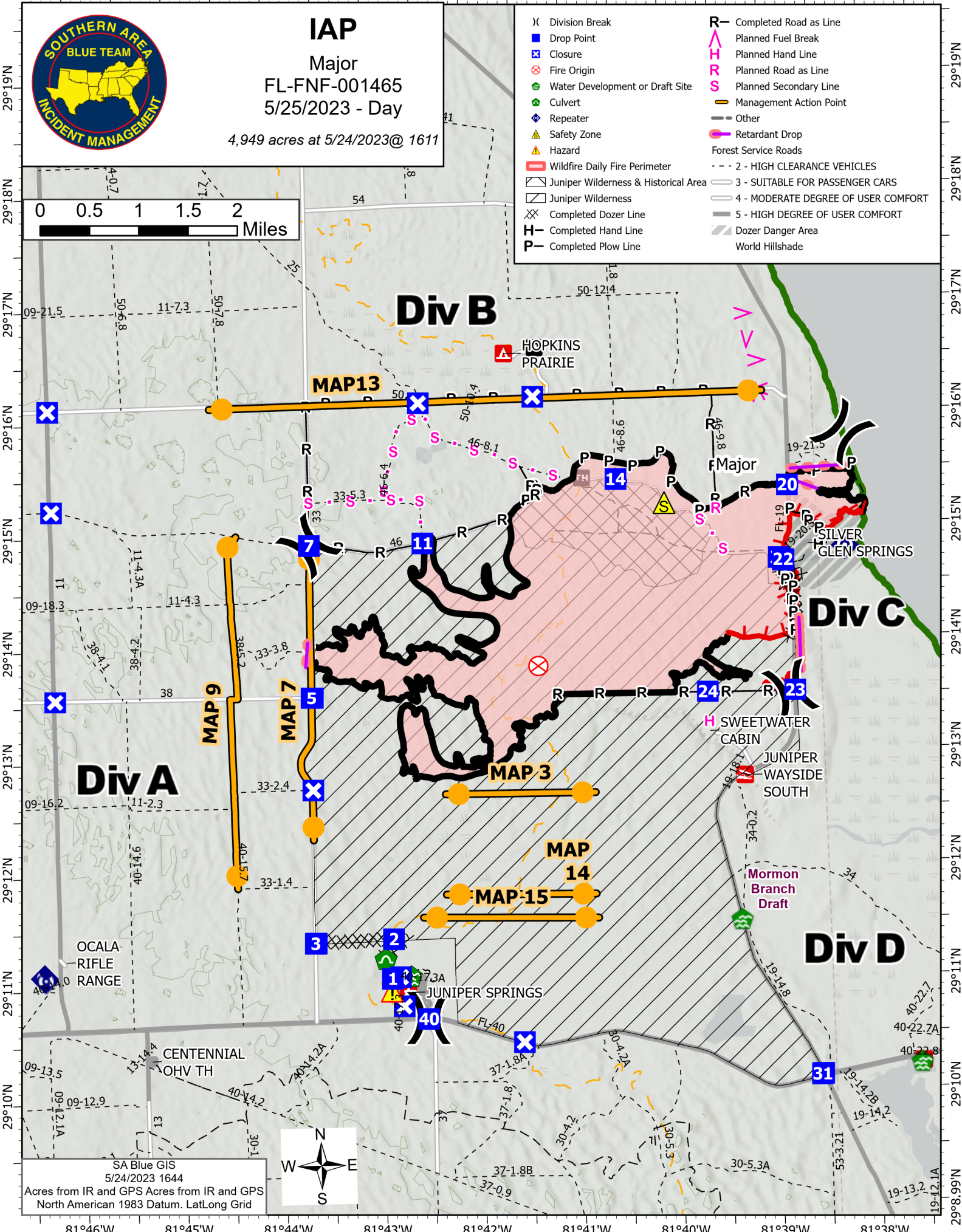
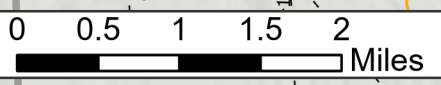


81°46'W 81°45'W 81°44'W 81°43'W 81°42'W 81°41'W 81°40'W 81°39'W 81°38'W



**IAP**  
Major  
FL-FNF-001465  
5/25/2023 - Day  
4,949 acres at 5/24/2023@ 1611

- (X) Division Break
- Drop Point
- ⊠ Closure
- ⊗ Fire Origin
- 🏠 Water Development or Draft Site
- 🌳 Culvert
- ⬮ Repeater
- ⚠ Safety Zone
- ⚠ Hazard
- 🚒 Wildfire Daily Fire Perimeter
- 🌳 Juniper Wilderness & Historical Area
- 🌳 Juniper Wilderness
- ⊠ Completed Dozer Line
- H Completed Hand Line
- P Completed Plow Line
- R Completed Road as Line
- ⤴ Planned Fuel Break
- ⤴ Planned Hand Line
- ⤴ Planned Road as Line
- ⤴ Planned Secondary Line
- 🛠 Management Action Point
- Other
- 🚒 Retardant Drop
- 🛤 Forest Service Roads
- - - 2 - HIGH CLEARANCE VEHICLES
- - - 3 - SUITABLE FOR PASSENGER CARS
- - - 4 - MODERATE DEGREE OF USER COMFORT
- - - 5 - HIGH DEGREE OF USER COMFORT
- 🚧 Dozer Danger Area
- 🌳 World Hillshade



SA Blue GIS  
5/24/2023 1644  
Acres from IR and GPS Acres from IR and GPS  
North American 1983 Datum. LatLong Grid



29°19'N  
29°18'N  
29°17'N  
29°16'N  
29°15'N  
29°14'N  
29°13'N  
29°12'N  
29°11'N  
29°10'N  
29°9.99'N

29°19'N  
29°18'N  
29°17'N  
29°16'N  
29°15'N  
29°14'N  
29°13'N  
29°12'N  
29°11'N  
29°10'N  
29°9.99'N

81°46'W 81°45'W 81°44'W 81°43'W 81°42'W 81°41'W 81°40'W 81°39'W 81°38'W