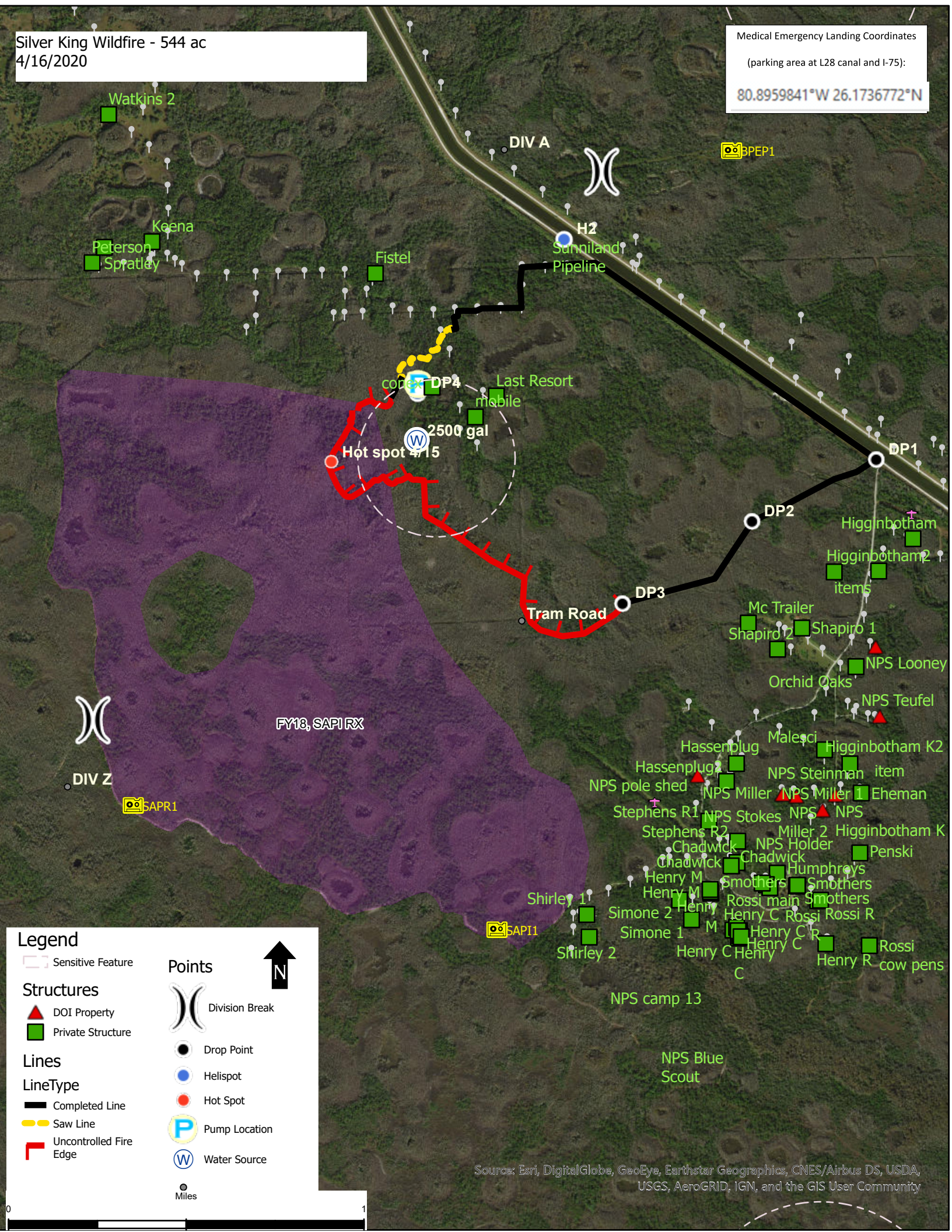


Silver King Wildfire - 544 ac
4/16/2020

Medical Emergency Landing Coordinates
(parking area at L28 canal and I-75):
80.8959841°W 26.1736772°N



Legend

Sensitive Feature
 Sensitive Feature

Structures
 DOI Property
 Private Structure

Lines
LineType
 Completed Line
 Saw Line
 Uncontrolled Fire Edge

Points
 Drop Point
 Helispot
 Hot Spot
 Pump Location
 Water Source
 Miles

Division Break
 Division Break

North Arrow
 N

Source: Esri, DigitalGlobe, GeoEye, Earthstar Geographics, CNES/Airbus DS, USDA, USGS, AeroGRID, IGN, and the GIS User Community