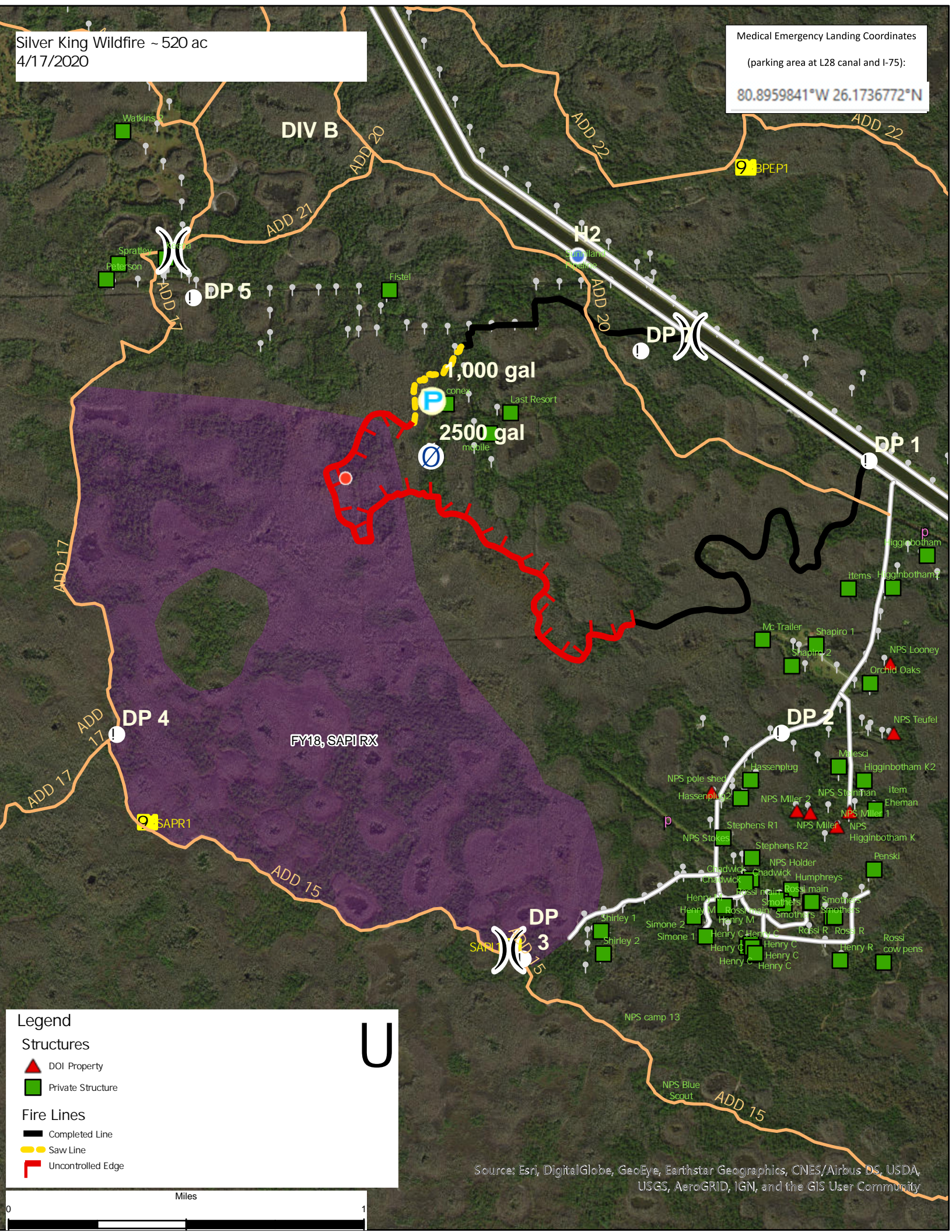


Silver King Wildfire ~ 520 ac  
4/17/2020

Medical Emergency Landing Coordinates

(parking area at L28 canal and I-75):

80.8959841°W 26.1736772°N



Legend

Structures

- ▲ DOI Property
- Private Structure

Fire Lines

- Completed Line
- Saw Line
- Uncontrolled Edge

U

Miles



Source: Esri, DigitalGlobe, GeoEye, Earthstar Geographics, CNES/Airbus DS, USDA, USGS, AeroGRID, IGN, and the GIS User Community