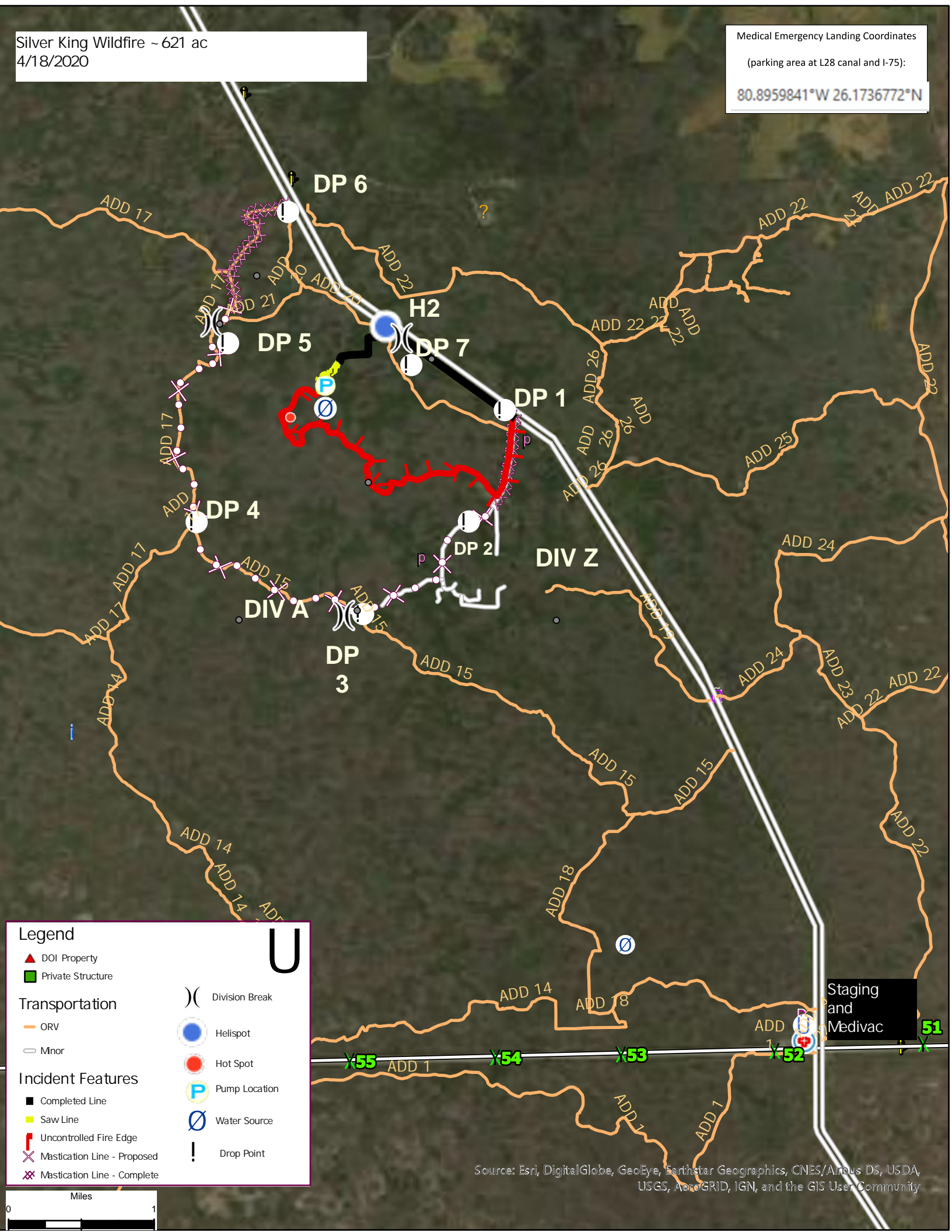


Silver King Wildfire ~ 621 ac  
4/18/2020

Medical Emergency Landing Coordinates

(parking area at L28 canal and I-75):

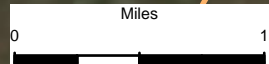
80.8959841°W 26.1736772°N



Legend

- ▲ DOI Property
- Private Structure
- Transportation**
- ORV
- Minor
- Incident Features**
- Completed Line
- Saw Line
- Uncontrolled Fire Edge
- X Mastication Line - Proposed
- X Mastication Line - Complete
- ( ) Division Break
- Helispot
- Hot Spot
- P Pump Location
- ⊖ Water Source
- ! Drop Point

U



Source: Esri, DigitalGlobe, GeoEye, Earthstar Geographics, CNES/Airbus DS, USDA, USGS, AeroGRID, IGN, and the GIS User Community