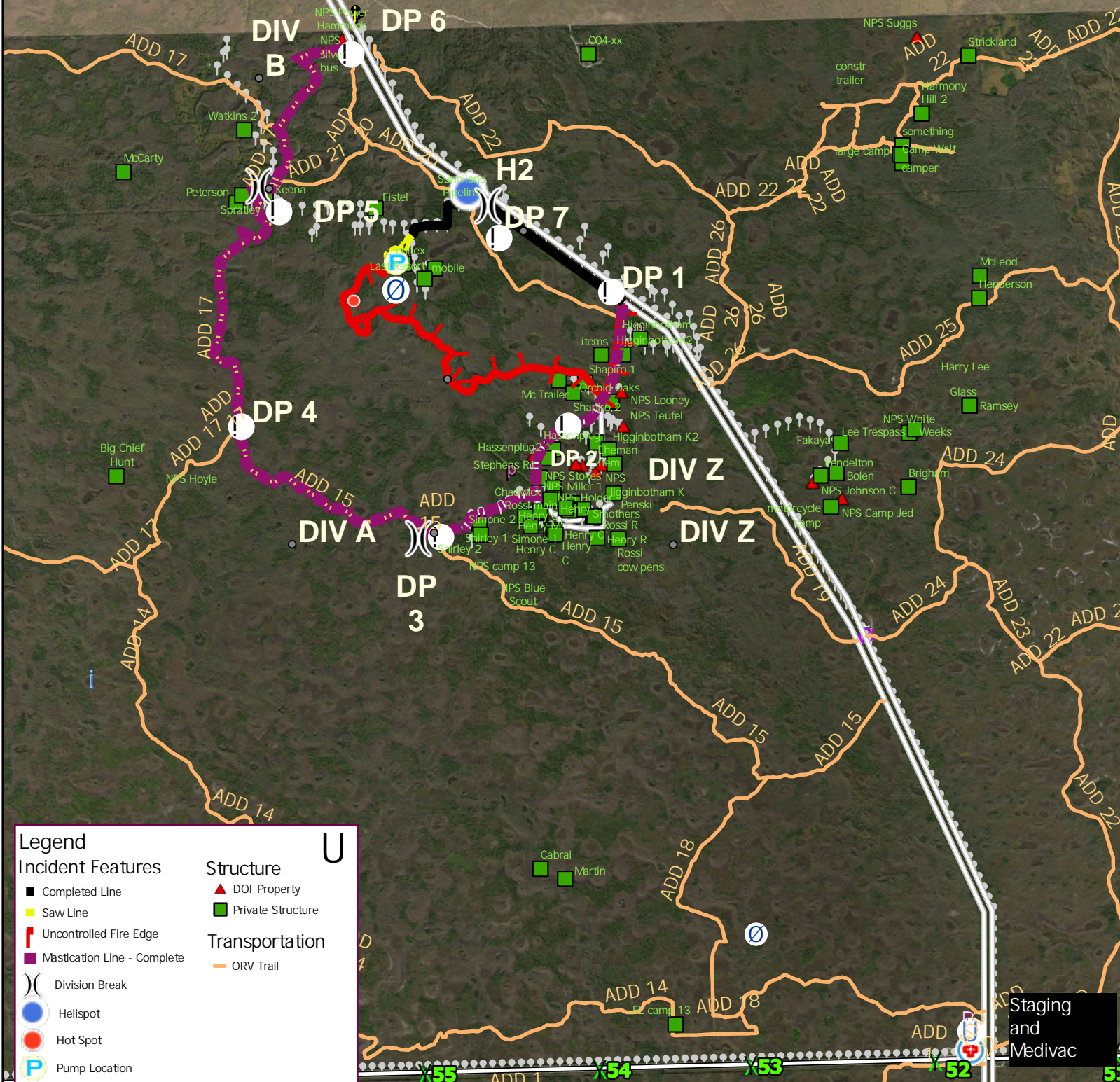


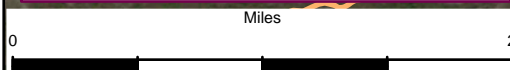
Silver King Wildfire ~ 643 ac
4/19/2020

Big Cypress
Seminole Tribe
of Florida



Legend

Incident Features	Structure	U
Completed Line	DOI Property	
Saw Line	Private Structure	
Uncontrolled Fire Edge	Transportation	
Mastication Line - Complete	ORV Trail	
Division Break		
Helispot		
Hot Spot		
Pump Location		
Water Source		
Drop Point		



Medical Emergency Landing Coordinates
(parking area at L28 canal and I-75):
80.8959841°W 26.1736772°N

Source: Esri, Digit...

ics, CNES/Airbus DS, USDA, and the GIS User Community

NPS tire dump

Staging and Medivac