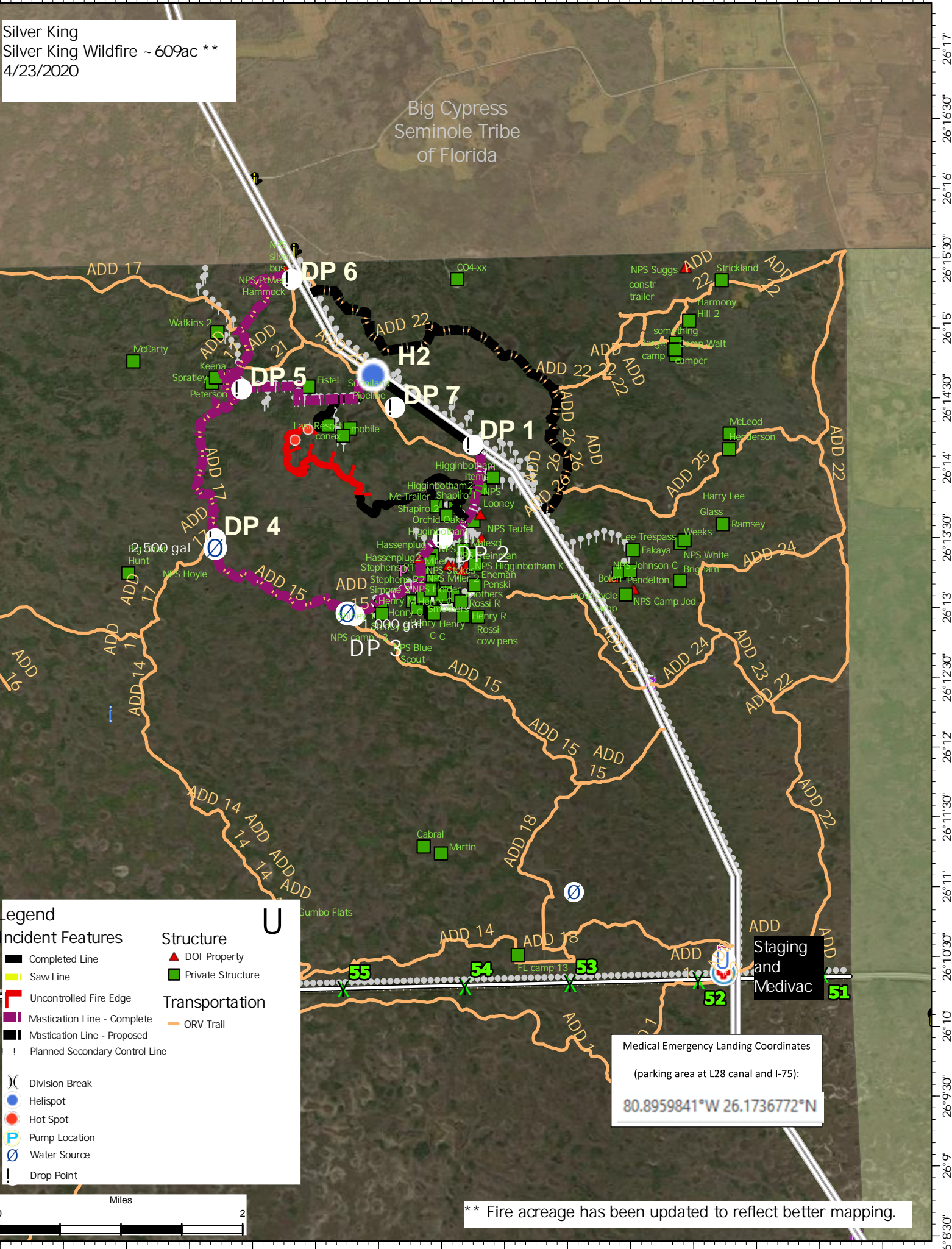


Silver King
 Silver King Wildfire ~ 609ac **
 4/23/2020

Big Cypress
 Seminole Tribe
 of Florida



Legend

Incident Features	Structure
— Completed Line	▲ DOI Property
— Saw Line	■ Private Structure
— Uncontrolled Fire Edge	
— Mastication Line - Complete	Transportation
— Mastication Line - Proposed	— ORV Trail
! Planned Secondary Control Line	
)(Division Break	
● Helispot	
● Hot Spot	
P Pump Location	
⊕ Water Source	
! Drop Point	

Medical Emergency Landing Coordinates
 (parking area at L28 canal and I-75):
80.8959841°W 26.1736772°N

** Fire acreage has been updated to reflect better mapping.