

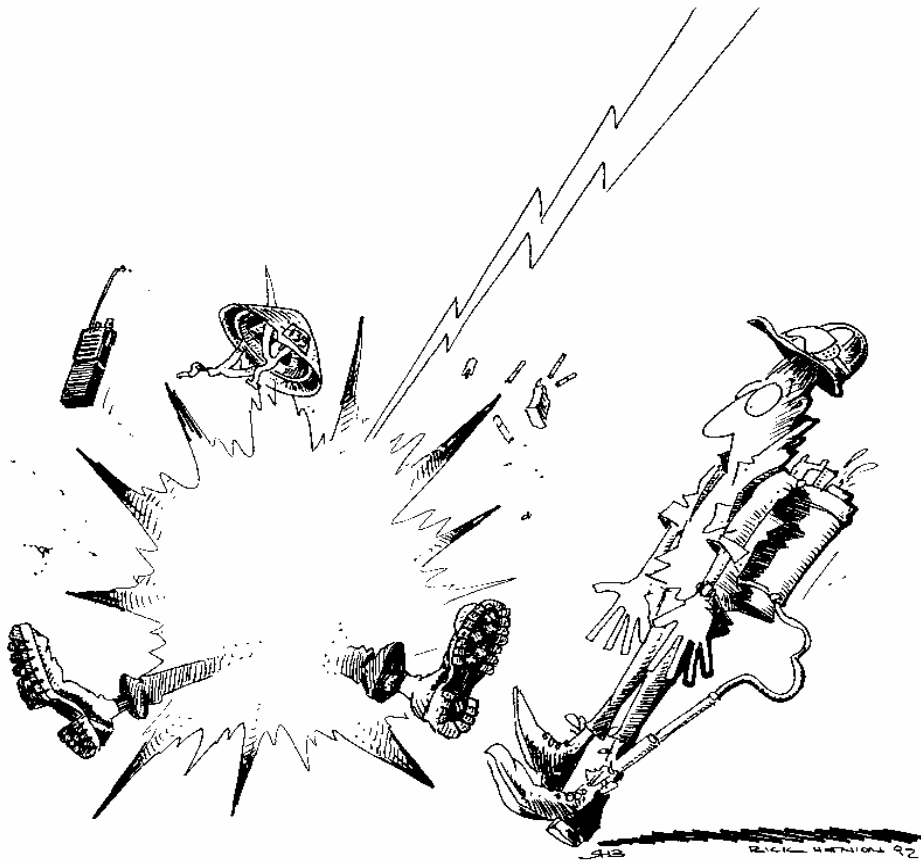
BIG TURNAROUND COMPLEX

INCIDENT ACTION PLAN

Day/Swing Shift

May 21, 2007

0700 - 2400



4. UNFAMILIAR WITH WEATHER AND LOCAL FACTORS INFLUENCING FIRE BEHAVIOR

<p style="text-align: center;">INCIDENT OBJECTIVES</p>	<p>1. INCIDENT NAME</p> <p style="text-align: center;">Big Turnaround Complex</p>	<p>2. DATE PREPARED</p> <p style="text-align: center;">05/20/2007</p>	<p>3. TIME PREPARED</p> <p style="text-align: center;">2230</p>									
<p>4. OPERATIONAL PERIOD (DATE/TIME)</p> <p style="text-align: center;">May 21, 2007 0700 - 2400 OPERATIONAL PERIOD</p>												
<p>5. GENERAL CONTROL OBJECTIVES FOR THE INCIDENT (INCLUDE ALTERNATIVES)</p> <ol style="list-style-type: none"> 1. Ensure firefighter and public safety through adherence to all safety standards, maintaining situational awareness and appropriate implementation of evacuations, closures, and temporary flight restrictions. 2. Protect / minimize threats / loss to private investments; improvements and facilities in Stephen F. Foster State Park; key cultural features as listed in the Delegation of Authority; and protect the integrity of the Okefenokee Wilderness. 3. Manage the fires within the swamp under a containment strategy in accordance with suppression actions outlined in the WFSA. In the East Zone, contain the fire East of the Swamp Perimeter Road in Charlton County; South and west of Hwy. 1 and the CSX Railroad line; and within the Swamp Perimeter Road. 4. Manage the incident cost effectively and in an efficient manner to contain the fire by June 17, 2007 at a cost below \$20,200,000. 												
<p>6. WEATHER FORCAST FOR OPERATIONAL PERIOD</p> <p style="text-align: center;">See the attached Weather and Fire Behavior Forecast for detailed forecast information.</p>												
<p>7. GENERAL/SAFETY MESSAGE</p> <p style="text-align: center;">Ensure LCES is in place. Drink plenty of water.</p>												
<table style="width: 100%; border: none;"> <tr> <td style="width: 33%;"><input checked="" type="checkbox"/> ORGANIZATION LIST (ICS 203)</td> <td style="width: 33%;"><input checked="" type="checkbox"/> MEDICAL PLAN (ICS 206)</td> <td style="width: 33%;"><input checked="" type="checkbox"/> SAFETY MESSAGE</td> </tr> <tr> <td><input checked="" type="checkbox"/> ASSIGNMENT LIST (ICS 204)</td> <td><input checked="" type="checkbox"/> AIR OPS. SUMMARY (ICS 220)</td> <td><input checked="" type="checkbox"/> FIRE WEATHER FORECAST</td> </tr> <tr> <td><input checked="" type="checkbox"/> COMMUNICATION PLAN (ICS 205)</td> <td><input checked="" type="checkbox"/> INCIDENT EMERGENCY PLAN</td> <td><input checked="" type="checkbox"/> FIRE BEHAVIOR FORECAST</td> </tr> </table>				<input checked="" type="checkbox"/> ORGANIZATION LIST (ICS 203)	<input checked="" type="checkbox"/> MEDICAL PLAN (ICS 206)	<input checked="" type="checkbox"/> SAFETY MESSAGE	<input checked="" type="checkbox"/> ASSIGNMENT LIST (ICS 204)	<input checked="" type="checkbox"/> AIR OPS. SUMMARY (ICS 220)	<input checked="" type="checkbox"/> FIRE WEATHER FORECAST	<input checked="" type="checkbox"/> COMMUNICATION PLAN (ICS 205)	<input checked="" type="checkbox"/> INCIDENT EMERGENCY PLAN	<input checked="" type="checkbox"/> FIRE BEHAVIOR FORECAST
<input checked="" type="checkbox"/> ORGANIZATION LIST (ICS 203)	<input checked="" type="checkbox"/> MEDICAL PLAN (ICS 206)	<input checked="" type="checkbox"/> SAFETY MESSAGE										
<input checked="" type="checkbox"/> ASSIGNMENT LIST (ICS 204)	<input checked="" type="checkbox"/> AIR OPS. SUMMARY (ICS 220)	<input checked="" type="checkbox"/> FIRE WEATHER FORECAST										
<input checked="" type="checkbox"/> COMMUNICATION PLAN (ICS 205)	<input checked="" type="checkbox"/> INCIDENT EMERGENCY PLAN	<input checked="" type="checkbox"/> FIRE BEHAVIOR FORECAST										
<p>ICS 202</p>	<p>9. PREPARED BY (PLANNING SECTION CHIEF)</p> <p style="text-align: center;">Paul Summerfelt</p>	<p>10. APPROVED BY (INCIDENT COMMANDER)</p> <p style="text-align: center;">Dan Oltrogge</p>										

**** Southwest Area IMT ****

ORGANIZATION ASSIGNMENT LIST		9. Operations Section		
1. Incident Name BIG TURNAROUND COMPLEX		Chief	Curtis Heaton/Pruett Small Chris Wilcox (T)/Todd Richards (T)	
2. Date 05/20/2007		a. Branch I - Division/Groups		
3. Time 2200		BRANCH DIRECTOR	Ben Kizer/Duane Tewa (T)	
4. Operational Period May 21, 2007, DAY/SWING 0700 - 2400		Division/Group	G-EB	Rick Young
Position	Name	Division/Group	EC-EF	Craig Daugherty
5. Incident Commander and Staff		Division/Group		
Incident Commander	Dan Oltrogge	Division/Group		
Safety Officer	Bruce Malloy / Dave Wolf	Division/Group		
Information Officer	Karen Takai / Jennifer Plyer (T)	Division/Group		
Liaison Officer	Sam Whitted	Division/Group		
6. Agency Representative		b. Branch II - Division/Groups		
Agency	Name	BRANCH DIRECTOR	Allen Mitchell	
FWS	George Constantino/Maury Bedford	Division/Group	EG-EI	Lance Elmore
FWS	Howard McCullough	Division/Group	EJ-WM	Steve Bumgarner
FWS	Russ Langsford	Division/Group	Firing Group	Jeff Andrews
GFC	Eric Harris	Division/Group	Structure Group	Jayson Coil Chris Marks (T)
Charlton Co. EM	Sgt. Joey Chancy	c. Division/Groups		
GEMA/Charlton Co.	Gary Rice	Division/Group	IA	Abel/Thompson
GEMA/Ware Co.	Vicki Thompson	Division/Group	Swing	C. Burns/ K. Ichiyasu (T)
7. Planning Section		d. Air Operations Branch		
Chief	Paul Summerfelt	Air Operations Branch Director	Alex Stone	
Resources Unit	Lee Thornhill/ Glenda Womack/ Dave Berens (T)	Air Attack Supervisor	Dan Eckstein / John Encino	
Situation Unit	Dave Dobbs	Air Support Group Supervisor	Bob Skeen	
FBAN	Brad Smith	Helibase Manager	James Anzalone	
GIS	Rick Crawford	10. Finance Section		
IMET	Phil Manuel	Chief	Darla Jo Quick	
Demobilization Unit	Candace Hart	Time Unit	Lisa Angle	
Human Resources		Procurement Unit	Rosalind Sorrell	
Documentation Unit	Mark Morgan	Compensation/Claims Unit	Geri Talgo	
Computer Specialist	Frank Webster	Cost Unit	Roxane Raley	
8. Logistics Section		Prepared by (Resource Unit Leader) Glenda Womack		
Chief	Ed Freed/JR Calkins (T)			
Supply Unit	Marcus Medina			
Facilities Unit	Thom Yuneman			
Ground Support Unit	Ben Garcia			
Communications Unit	Carl Berghofer/Jim Rallis (T)			
Medical Unit	Frank Abel			
Security Manager	Walter Sellers			
Food Unit	Sharon Taube			

Fire Weather Forecast

FORECAST NO: 17

NAME OF FIRE: Big Turnaround Complex

PREDICTION FOR: Day Shift

UNIT: Okefenokee Wildlife Refuge

SHIFT DATE: Monday 05/21/07

SIGNED: Phil Manuel

TIME AND DATE 1900

Incident Meteorologist

FORECAST ISSUED: 05/20/2007

WEATHER DISCUSSION:

Critical fire weather conditions due to low afternoon humidity will develop over the incident area this afternoon. Dry high pressure remains centered just to our north. As a result, anticipate low dewpoints with an easterly surface wind. The ocean sea breeze is expected to bring an increase in wind speed late in the afternoon. Modest wind speeds are expected after its passage from 1600 through 2000.

The main concern: **Very Low Afternoon Humidity Today. Sea breeze developing.**

WEATHER FORECAST MONDAY:

...Red Flag Warning This Afternoon and Early Evening for Low Relative Humidity...

WEATHER: Areas of morning smoke and fog...then sunny and dry.

MAX TEMPERATURES: Around 88. (24 hour trend = up 2)

MIN HUMIDITY: 18 to 24 percent (24 hour trend = unchanged)

20 FT WINDS: Calm through 0930...then east 5 to 10 mph during the late morning and afternoon.

Sea breeze will bring period of 8 to 12 mph wind from the southeast after 1600 (4 PM)...lasting through about 2000 (8 PM).

STABILITY/INVERSION: Mixing heights around 6500 ft in the afternoon.

Dispersion Index 60. Haines Index 5.

TRANSPORT WINDS: East 10 mph.

WEATHER FORECAST MONDAY NIGHT:

WEATHER: Clear. Surface inversion trapping areas of smoke after midnight.

MIN TEMPERATURES: Low around 53. (24 hour trend = unchanged)

MAX HUMIDITY: Recovery between 80 and 100 percent.

20 FT WINDS: Southeast 3 to 6 mph...becoming light and variable after midnight.

STABILITY/INVERSION: Inversion to 300 feet. Dispersion Index 4.

OUTLOOK FOR TUESDAY: Mostly Sunny. Breezy. Light east wind 3 to 5 mph during the morning increasing to 10 to 15 mph for the afternoon. High near 87. Minimum humidity 24 to 28 percent.

SUNRISE/SUNSET: Monday May 21st...0629/2019

EXTENDED...

High pressure will remain centered to our north. An easterly wind flow off the ocean will gradually bring higher dewpoints into the area. This increase in moisture will result in a gradual recovery of humidity along with the threat of late afternoon and evening showers or thunderstorms for Wednesday through Saturday.

	Wednesday	Thursday	Friday	Saturday
Low	59	62	62	60
High	85	85	84	86
Min RH	30 to 35	35 to 40	45	35 to 40
Wind	E 10-15 G20	E 10 to 15	E 4-8	E 3-6
Weather	Pt. ClDY.	Pt. ClDY	Pt. ClDY	Pt. ClDY
POP	20	20	20	20

Fire Behavior Forecast

<u>Forecast No. 32</u>	<u>Prediction for Day Shift</u>
<u>Name of Fire: Big Turnaround Complex</u>	<u>Shift Date: Monday May 21, 2007</u>
<u>Time and Date Forecast Issued</u> <u>1800 hrs 5/20/2007</u>	<u>Signed : Brad Smith</u> <u>Fire Behavior Analyst</u>

Weather Summary (See Detailed Weather Forecast in the IAP):

There will be a full 10 hours of sunshine today with temperatures reaching the upper 80's and RH dropping to near 20%. East winds will range from 5-10 mph sustained in the afternoon with an increase to 8-12 mph from the East with the arrival of the sea breeze. A Haines index of 5 and a dispersion index of 60 indicate an unstable airmass.

General Fire Behavior: The forecast instability, low RH and maximum temperatures approaching 90 will combine with historic fuel dryness to produce very active fire behavior in all fuel types. Expect moderate fire behavior after the morning inversion breaks around 0930. Fire behavior will increase to active by 1100 and very active during the peak hours 1600 through 2000 hrs. There is a potential for extreme fire behavior with the arrival of the sea breeze from 1800 to 1900 hours. During peak hours swamp shrub and swamp bay fuels will burn intensely on the surface. The unstable airmass will facilitate torching and short range spotting out to 100 yards. The swamp fuels will produce moderate backing spread rates of 2-4 chains per hour. During peak burning hours, pine fuels will spread at 20-40 chains/hr with very high intensities in the palmetto/gallberry rough (10-20ft flame lengths). Single tree and group torching in open canopy pine can produce spotting out to 300 yards. Young pine plantations (5-10yrs) with a closed canopy has the potential to support sustained crown fire. Probability of ignition will be 90% during the peak burning period. Expect an intensification of fire behavior with the arrival of the sea breeze which could be from 1700 to 2000 hrs.

Specific Fire Behavior:

Branch I: Low to moderate intensity burnout along portions of the swamp edge break from DIV ED to the branch break has created a high potential for reburn. This potential will increase over the next week as needle cast and leaf fall accumulates. Rekindle in needle cast will continue to occur in the burned area from DIV H to DIV EB. Needle cast has filled in containment lines providing an escape path to green fuels for any reburn occurring near containment lines.

Branch II: The fire edge near Coward Lake will reach the swamp shrub fuels today. The fire edge will continue to back to the East. Backing spread during peak hours in the swamp shrub will range from 2-4 chains per hour.

Air Operations: Inversions will persist until 0900. Expect heavy smoke production from interior burning from 1300 to 2000 hrs.

Safety: Size up should be a continuous process, not a once a day requirement. It is important for firefighters to keep up with changes in weather and fire behavior. Are your observations close to the forecasts for weather and fire behavior? Firefighters must first recognize that significant changes are present. Then, and maybe more importantly, they must base their future actions on these changes. The tactical plan initially made may not be valid with the changes in weather and fire behavior that is being observed.

DIVISION ASSIGNMENT LIST			1. Branch 1 Ben Kizer / Duane Tewa (T)		2. Division/Group G-EB		
3. Incident Name Big Turnaround Complex			4. Operational Period Date: 05/21/2007		Time: 0700 - 1900		
5. Operations Personnel							
Operations Chief		Curtis Heaton/Chris Wilcox(T) Pruett Small/Todd Richards(T)		Division/Group Supervisor		Rick Young	
6. Resources Assigned this Period							
Strike Team/Task Force/ Resource Designator		Leader	Number Persons	Trans. Needed	Drop Off PT./Time		Pick Up PT./Time
Task Force 4		Mike Smith	1	N	ICP 0700		ICP 1900
NFC #2 T6 E-235		Joe Slaughter	2	N	ICP 0700		ICP 1900
Windcave 628 T6 E-295		Jason Devcich	3	N	ICP 0700		ICP 1900
Rocky Mtn. T6 E-429		Mike Smith	3	N	ICP 0700		ICP 1900
Pat Rick T2 C-10		James Braham	20	N	ICP 0700		ICP 1900
Fire Trax 3 10-WY T6 E-431		Levi Drake	3	N	ICP 0700		ICP 1900
Greyback NCR5A C-13		Matt Elliot	20	N	ICP 0700		ICP 1900
Sam Houston T5 E-290		Jason Klawinsky	3	N	ICP 0700		ICP 1900
Pike 961 T6 E-319		Thomas Barter	3	N	ICP 0700		ICP 1900
RGD Engine 651 E-320		Matthew Norden	3	N	ICP 0700		ICP 1900
West Metro T6 E-432		Mark Corbett	3	N	ICP 0700		ICP 1900
Colorado WFS T6 E-434					ICP 0700		ICP 1900
Engine 4362 T6 E-435		Stephen Reyes	3	N	ICP 0700		ICP 1900
Engine 204 T6 E-436		Matt Dayer	3	N	ICP 0700		ICP 1900
SHF-611 T6 E-437		Kory Bowser	3	N	ICP 0700		ICP 1900
Rocky MT Fire T6 E-438		Courtney Wenzel	3	N	ICP 0700		ICP 1900
WAT3 T&Y E-241		Tim Wood	1	N	ICP 0700		ICP 1900
STEN		Shaun Craig	1	N	ICP 0700		ICP 1900
STEN (t)		Josh Warden	1	N	ICP 0700		ICP 1900
STEN		David Reid	1	N	ICP 0700		ICP 1900
STEN (t)		Bryan Sumpter	1	N	ICP 0700		ICP 1900
SOF2		D. Schwecke	1	N	ICP 0700		ICP 1900
Medic 1		Frank Abel	1	N	ICP 0700		ICP 1900
7. Control Operations Patrol and mop-up 100 feet. Continue to suppress re-burn pockets. Task Force 4 and crews to secure accessible area in and around Swamp Park area.							
8. Special Instructions GFC will assume command on escapes / IA outside Perimeter Road, DIV groups will assist as needed. Resources located at St. George Include snag awareness in all briefings. All firing must be approved & coordinated thru Branch.							
9. Division/Group Communication Summary							
Function	Frequency	System	Channel	Function	Frequency	System	Channel
Command	Rx: 164.575 Tx: 163.150 Tone 206.5	King NIFC	2	Air to Ground	170.000	King NIFC	12
Tactical Div/Group	164.1375 N	King NIFC	8	Air to Ground		King NIFC	
Prepared by (Resource Unit Leader) /s/ Glenda Womack		Approved by (Planning Section Chief) /s/ Paul Summerfelt			Date 05/20/2007		Time 2200

DIVISION ASSIGNMENT LIST		1. Branch 1 Ben Kizer / Duane Tewa		2. Division/Group EC-EF			
3. Incident Name Big Turnaround Complex		4. Operational Period Date: 05/21/2007 Time: 0700 - 1900					
5. Operations Personnel							
Operations Chief	Curtis Heaton/Chris Wilcox(T) Pruett Small/Todd Richards(T)	Division/Group Supervisor	Craig Daugherty				
6. Resources Assigned this Period							
Strike Team/Task Force/ Resource Designator	Leader	Number Persons	Trans. Needed	Drop Off PT./Time	Pick Up PT./Time		
Task Force 3	Chad Cullum	1	N	ICP 0700	ICP 1900		
SRV 14 T2 C-7	Rodolfo Cervantes	20	N	ICP 0700	ICP 1900		
Showlow Brush 344 T6 E-237	Darren Cluff	3	N	ICP 0700	ICP 1900		
AL-Coush Eng 8061 T6 E-291	Nathan Williams	2	N	ICP 0700	ICP 1900		
RA-Cour 4633 T6 E-430	Jerry Fullerton	3	N	ICP 0700	ICP 1900		
Sunfire #1 T6 E-433	Dennis McMillian	2	N	ICP 0700	ICP 1900		
Excavator E-259	Craig Crawford	3	N	ICP 0700	ICP 1900		
SOF2	Harry Lester	1	N	ICP 0700	ICP 1900		
Medic 4	Tyler Taapken	1	N	ICP 0700	ICP 1900		
7. Control Operations Continue mop-up around Branch 1 - 2 break.							
8. Special Instructions GFC will assume command on escapes / IA outside Perimeter Road, DIV groups will assist as needed. IA Group works directly for OPS Include snag awareness in all briefings. All firing must be approved & coordinated thru Branch.							
9. Division/Group Communication Summary							
Function	Frequency	System	Channel	Function	Frequency	System	Channel
Command	Rx: 164.625 Tx: 163.150 Tone 103.5		5	Air to Ground	170.000	King NIFC	12
Tactical Div/Group	168.775	King NIFC	9	Air to Ground		King NIFC	
Prepared by (Resource Unit Leader) /s/ Glenda Womack		Approved by (Planning Section Chief) /s/ Lee Thornhill		Date 05/20/2007		Time 2200	

DIVISION ASSIGNMENT LIST		1. Branch 2 Allen Mitchell		2. Division/Group EG-EI			
3. Incident Name Big Turnaround Complex		4. Operational Period Date: 05/21/2007 Time: 0700 - 1900					
5. Operations Personnel							
Operations Chief		Curtis Heaton/Chris Wilcox(T) Pruett Small/Todd Richards(T)		Division/Group Supervisor		Lance Elmore	
6. Resources Assigned this Period							
Strike Team/Task Force/ Resource Designator		Leader	Number Persons	Trans. Needed	Drop Off PT./Time		Pick Up PT./Time
Wildland Fire Service T6 E-24		Paul Catlett	2	N	ICP 0700		ICP 1900
Pro Temps Inc #2 T6 E-142		George Rogers	2	N	ICP 0700		ICP 1900
South Fork Eng T6 E-240		Barry Melloan	2	N	ICP 0700		ICP 1900
Pro Temp Inc #3 T5 E-144		David Jones	3	N	ICP 0700		ICP 1900
Savannah River #3 T2 E-169		Douglas Walker	2	N	ICP 0700		ICP 1900
Greyback NCC 7C T2IA C-14		Sean Hendrix	20	N	ICP 0700		ICP 1900
TPLU E-154		Buddy Wood	1	N	ICP 0700		ICP 1900
TPLU E-155		Mike Moore	1	N	ICP 0700		ICP 1900
DOZB		Trey Glineski	1	N	ICP 0700		ICP 1900
FS Dozer E-67		Powell	1	N	ICP 0700		ICP 1900
McGoverns Tractor E-312		Barney Ray McGovern	1	N	ICP 0700		ICP 1900
McGoverns Tractor E-313			1	N	ICP 0700		ICP 1900
SOF2		William Miller	1	N	ICP 0700		ICP 1900
SOF2		McClanaham (T)	1	N	ICP 0700		ICP 1900
Medic 2		Steve Spangler	1	N	ICP 0700		ICP 1900
7. Control Operations Prepare Toledo property for potential runs from Coward Lake. Assist Structure Protection Group with Chesser Island prep as necessary.							
8. Special Instructions GFC will assume command on escapes / IA outside Perimeter Road, DIV groups will assist as needed. Include snag awareness in all briefings. Work with landowner prior to plowing private lands. All firing must be approved & coordinated thru Branch.							
9. Division/Group Communication Summary							
Function	Frequency	System	Channel	Function	Frequency	System	Channel
Command	Rx: 164.775 Tx: 163.150 Tone 123.0		1	Air to Ground	170.000	King NIFC	12
Tactical Div/Group	168.200	King NIFC	11	Air to Ground		King NIFC	
Prepared by (Resource Unit Leader) /s/ Glenda Womack		Approved by (Planning Section Chief) /s/ Paul Summerfelt			Date 05/20/2007		Time 2200

DIVISION ASSIGNMENT LIST			1. Branch 2 Allen Mitchel		2. Division/Group EJ-WM		
3. Incident Name Big Turnaround Complex			4. Operational Period Date: 05/21/2007 Time: 0700 - 1900				
5. Operations Personnel							
Operations Chief		Curtis Heaton/Chris Wilcox(T) Pruett Small/Todd Richards(T)		Division/Group Supervisor		Steve Bumgarner	
6. Resources Assigned this Period							
Strike Team/Task Force/ Resource Designator		Leader		Number Persons	Trans. Needed	Drop Off PT./Time	Pick Up PT./Time
Task Force 7		Carl Schwope		1	N	ICP 0700	ICP 1900
NMCAF Eng 7 T6 E-138		Eddy Romero		3	N	ICP 0700	ICP 1900
TX Fire Eng 151		Chris Balough		2	N	ICP 0700	ICP 1900
Tipton & Young DOZ E-3				1	N	ICP 0700	ICP 1900
Task Force 8		William Layfield (t)		1		ICP 0700	ICP 1900
IDIFD Eng 3652 T6 E-315		Brian O'Donnell		3	N	ICP 0700	ICP 1900
IDCTF Eng 531 T6 E-316		Ashley Phelps		3	N	ICP 0700	ICP 1900
T&Y WAT3 E-243		Lee Cahoon		1	N	ICP 0700	ICP 1900
Ferguson NCC9A T2 C-11		Soren McCallister		20	N	ICP 0700	ICP 1900
SFS Inc DOZ D8T E-264		Chris Steedley		1	N	ICP 0700	ICP 1900
SFS Inc DOZ D8T E-272		Gary		1	N	ICP 0700	ICP 1900
SFS Inc DOZ D6 E-378				1	N	ICP 0700	ICP 1900
SFS Inc DOZ D2 E-276		Rob O'Neal					
DOZB		C. Rabe		1	N	ICP 0700	ICP 1900
DOZB		Albert Huggins		1	N		
DOZB		John Schmechel		1	N	ICP 0700	ICP 1900
SOF2		John Strom		1	N	ICP 0700	ICP 1900
Medic 3		Rick Bastain		1	N	ICP 0700	ICP 1900
7. Control Operations Ensure perimeter is secure. Assist EG-EI with burn prep.							
8. Special Instructions GFC will assume command on escapes / IA outside Perimeter Road. IA Group will report directly to Ops. DIV groups will assist as needed Include snag awareness in all briefings. All firing must be approved & coordinated thru Branch. EG-EJ Coordinate with private landowners prior to plowing timber stands							
9. Division/Group Communication Summary							
Function	Frequency	System	Channel	Function	Frequency	System	Channel
Command	Rx: 164.625 Tx: 163.150 Tone 103.5		5	Air to Ground	170.000	King NIFC	12
Tactical Div/Group	164.1375	King NIFC	8	Air to Ground		King NIFC	
Prepared by (Resource Unit Leader) /s/ Glenda Womack		Approved by (Planning Section Chief) /s/ Paul Summerfelt			Date 05/20/2007		Time 2200

DIVISION ASSIGNMENT LIST		1. Branch 2 Allen Mitchell		2. Division/Group Structure Group			
3. Incident Name Big Turnaround Complex		4. Operational Period Date: 05/21/2007 Time: 0700 - 1900					
5. Operations Personnel							
Operations Chief		Curtis Heaton/Chris Wilcox(T) Pruett Small/Todd Richards(T)		Division/Group Supervisor		Jayson Coil Chris Marks (T)	
6. Resources Assigned this Period							
Strike Team/Task Force/ Resource Designator		Leader		Number Persons	Trans. Needed	Drop Off PT./Time	Pick Up PT./Time
Task Force 1		Mike Hayes/Dana Bagnoli (t)		2	N	ICP 0700	ICP 1900
Cherokee IHC C-5		Dennis Trentham		17	N	ICP 0700	ICP 1900
Rowling 393 T6 E-298		Chris Hathaway		3	N	ICP 0700	ICP 1900
Everglades 606 T6 E-299		Jackson Weer		3	N	ICP 0700	ICP 1900
WAT1 T&Y E-499		Marcus Black		1	N	ICP 0700	ICP 1900
WAT1 T&Y E-500		Dorthy Aller		1	N	ICP 0700	ICP 1900
Task Force 2		David McCurry		1	N	ICP 0700	ICP 1900
Mescalero ENG T6 E-323		Clyde Davis		4	N	ICP 0700	ICP 1900
Ferguson NCC C-12		Tim Sickles		20	N	ICP 0700	ICP 1900
BLM E-612 T6 E-119		Arcenio Solano		3	N	ICP 0700	ICP 1900
BIA 801 T6 E-292		David Rabon		2	N	ICP 0700	ICP 1900
7. Control Operations Develop Structure Protection Plan and discuss with Firing Group Sup. prior to burn-out operations. Coordinate with GEMA with evacuation Plan. Mutual Aid Resources are located at St. George.							
8. Special Instructions GFC will assume command on escapes / IA outside Perimeter Road, DIV groups will assist as needed. Mutual Aid resources located at St. George. Include snag awareness in all briefings. All firing must be approved & coordinated thru Branch.							
9. Division/Group Communication Summary							
Function	Frequency	System	Channel	Function	Frequency	System	Channel
Command	Rx: 164.575 Tx: 163.500 Tone 206.5		2	Air to Ground	170.000	King NIFC	12
Tactical Div/Group	168.600	King NIFC	7	Air to Ground		King NIFC	
Prepared by (Resource Unit Leader) /s/ Glenda Womack		Approved by (Planning Section Chief) /s/ Paul Summerfelt			Date 05/20/2007		Time 2200

DIVISION ASSIGNMENT LIST			1. Branch		2. Division/Group IA Group		
3. Incident Name Big Turnaround Complex			4. Operational Period Date: 05/21/2007 Time: 0700 - 1900				
5. Operations Personnel							
Operations Chief		Curtis Heaton/Chris Wilcox(T) Pruett Small/Todd Richards(T)		Division/Group Supervisor		Todd Abel Thompson (t)	
6. Resources Assigned this Period							
Strike Team/Task Force/ Resource Designator		Leader		Number Persons	Trans. Needed	Drop Off PT./Time	Pick Up PT./Time
OKR 41 T6 E-306		William Sikes		2	N	ICP 0700	ICP 1900
KY-LBF T6 Eng 1 E-59		Dirk Wiley		3	N	ICP 0700	ICP 1900
MNGPA T6 E-145		Erike Carlson		3	N	ICP 0700	ICP 1900
WOD Eng 192 T6 E-297		Sage Decker		3	N	ICP 0700	ICP 1900
Eng 627 T6 E-317		Ralph Murray		3	N	ICP 0700	ICP 1900
Eagle's Eng. 1 T6 E-321		Bryon Treas		3	N	ICP 0700	ICP 1900
OKR-TPL2 53 E-25		Cory Bryant		1	N	ICP 0700	ICP 1900
7. Control Operations Be prepared to respond to new starts. Coordinate with Branch Director after 0700 briefing. Assist in re-burn suppression as requested by DIVS.							
8. Special Instructions All Groups: GFC will assume command on escapes/IA outside perimeter Rd DIV Groups will assist as needed. Include snag awareness in all briefings IA Group works for Ops							
9. Division/Group Communication Summary							
Function	Frequency	System	Channel	Function	Frequency	System	Channel
Command	Rx: 164.775 Tx: 163.150 Tone 123.0		1	Air to Ground	170.000	King NIFC	12
Tactical Div/Group	168.600	King NIFC	7	Air to Ground		King NIFC	
Prepared by (Resource Unit Leader) /s/ Glenda Womack		Approved by (Planning Section Chief) /s/ Paul Summerfelt			Date 05/20/2007		Time 2200

DIVISION ASSIGNMENT LIST		1. Branch		2. Division/Group Swing Group			
3. Incident Name Big Turnaround Complex		4. Operational Period Date: 05/21/2007 Time: 1200 - 2400					
5. Operations Personnel							
Operations Chief		Heaton /Wilcox (T) Day Small / Richards (T) Night		Division/Group Supervisor		Charley Burns Kato Ichiyasu (T)	
6. Resources Assigned this Period							
Strike Team/Task Force/ Resource Designator	Leader	Number Persons	Trans. Needed	Drop Off PT./Time	Pick Up PT./Time		
Strike Team 1	Rodney Smartlowit	1	N	ICP 1200	ICP 2400		
Langley Eng T6 E-17	Shawn Langley	2	N	ICP 1200	ICP 2400		
Cranes Wildfire T6 E-18	Don Crane	2	N	ICP 1200	ICP 2400		
Wildland Fire Service T6 E-21	Grant Stillman	2	N	ICP 1200	ICP 2400		
Wildland Fire Service T6 E-22	Michael More	2	N	ICP 1200	ICP 2400		
Wildland Fire Service T6 E-23	Trixie Smith	2	N	ICP 1200	ICP 2400		
SOF2	Donald Ranne	1	N	ICP 1200	ICP 2400		
Strike Team 2	Michael Jones	1	N	ICP 1200	ICP 2400		
DOZB	E. Willy	1	N	ICP 1200	ICP 2400		
Tipton & Young JD750 E-9	Billy Chapman	1	N	ICP 1200	ICP 2400		
Tipton & Young JD750 E-10	Jimmy Zimmerman	1	N	ICP 1200	ICP 2400		
Task Force 5	Jason Ownbey / Justin Juede (t)	2	N	ICP 1200	ICP 2400		
Smokey Mt Eng 1. T6 E-53	James Myers	2	N	ICP 1200	ICP 2400		
Eng 2132 T3 E-64	Mike Lerma	3	N	ICP 1200	ICP 2400		
Wildland Fire Service T3 E-75	James Sweeney	2	N	ICP 1200	ICP 2400		
NATR Eng 40 T6 E-107	Mark Whipps	3	N	ICP 1200	ICP 2400		
Tipton & Young WT2 E-16	Mark Hudgins	1	N	ICP 1200	ICP 2400		
DOZB	E. Willy	1	N	ICP 1200	ICP 2400		
Tipton & Young JD750 E-11	Jason Gregory	1	N	ICP 1200	ICP 2400		
Medic 3	Rick Bastian	1	N	ICP 1200	ICP 2400		
Medic 4	Tyler Taapken	1	N	ICP 1200	ICP 2400		
SOF2	George Marcott	1	N	ICP 1200	ICP 2400		
SOF2	Donald Ranne	1	N	ICP 1200	ICP 2400		
7. Control Operations Support work in any Division as requested by OSC.							
8. Special Instructions GFC will assume command on escapes / IA outside Perimeter Road, DIV groups will assist as needed. Include snag awareness in all briefings All firing must be approved & coordinated thru Branch. IA Groups report directly to OPS							
9. Division/Group Communication Summary							
Function	Frequency	System	Channel	Function	Frequency	System	Channel
Command	Rx: 164.575 Tx: 163.150 Tone 206.5		2	Air to Ground	170.000	King NIFC	12
Tactical Div/Group	168.600	King NIFC	7	Air to Ground		King NIFC	
Prepared by (Resource Unit Leader) /s/ Dana Bagnoli		Approved by (Planning Section Chief) /s/ Paul Summerfelt			Date 05/20/2007		Time 2200

AIR OPERATIONS SUMMARY		PREPARED BY: Alex Stone			PREPARED DATE/TIME: 05/19/2007 1925		
1. INCIDENT NAME: Big Turnaround Complex		2. OPERATIONAL PERIOD: 05/21/2007	START TIME: 0900	END TIME: 2000	SUNRISE: 0630 0630	SUNSET: 2020 (Folkston) 2022 (Waycross)	
3. REMARKS (Safety Notes, Hazards, Air Operations Special Equipment, etc.): Be Alert to Media Aircraft Over Fire Be Alert to High Winds and Heavy Smoke Helibases Located At Okefenokee NWR, Waycross, and Davis Helibase (Folkston, Ga.) Aviation Break at Florida Hwy. # 2 Maintain ½ mile initial call up (Lifeflight Helicopter) Located At Jacksonville, Fla. 1-800-223-4878 (Shands Hospital)				4. MED EVAC A/C: N17HX		5. TFR: 7/1820-ga Radius: Rectangle Altitude: 3000 MSL NW Corner: Lat: 31-09-00 N Long: 82-38-50 W SE Corner: Lat: 30-15-00 N Long: 82-02-27 W	
6. PERSONNEL		Phone	7. FREQUENCIES	AM	FM	8. FIXED-WING	
AOBD: Alex Stone		Primary 520-991-7871	AIR/AIR FW:	122.575 122.825 (Sec.) 122.925 State	167.950	Air Tankers	
ATGS: Larry Mars 90K Sweat Farm Rd. Ed Encinas 3UV Dan Eckstein 0EB ATGS (T) Owen Martin		459-857-9663 520-954-2358 928-595-1479	AIR/AIR RW:	122.575 122.575		2 Av. I P2V T-09 - T-10 LCQ 2 Av. I P-3 T-20 -T-22 OCL	
HLCO:			AIR/GROUND:		170.000	Lead Planes	
ASGS: Bob Skeen		505-660-4521	COMMAND:			1 Av. 82Z (ATGS) LCQ 1 Av. 81Z (ASM) B88 LCQ Base FAX #: 1 Av. 30W (ASM) B2 OCL	
HEBM: Zoni Anzalone (Pogo) HEBM Dave Langley (Waycross) HEBM: Mike Summerfield (Davis)		912-496-4415 912-218-8937 912-496-3765	COMMAND RPT	Rx:	Tx:	ATGS Aircraft	
ATB MGR:			DECK FREQ:			(1) 90K -----Beech Baron (2) 3UV----- Aero Commander (3) 0EB----- Kingair (4) AH-1 Cobra Infrared	
			TOLC FREQ:			Other:	
			FLIGHT FOLLOWING POGO HELIBASE		Rx. 164.625 Tx. 163.150 Tone: 103.5	(1) Flight Following With Pogo Helibase or Waycross Helibase (2) Initial Attack Aircraft For State Cessna 182's and CH-47 and UH-60's (3) Initial Attack For Okenefokee is N5738Y (Okee 6) APPROVED HELISPOTS: Refer to Okefenokee NWR Dipsite Map	

9. AIRCRAFT ASSIGNED (Use Additional Sheets As Necessary)

FAA N#	TY	MAKE/MODEL	BASE	AVAIL	START	REMARKS	FAA N#	TY	MAKE/MODEL	BASE	AVAIL	START	REMARKS
N5BH	I	Sikorsky S-70	Davis	0900	0930	Bucket Drops	90K		Beech Baron	Waycross	0900	0930	Aerial Supervision
N4503E (HT-763)	I	Sikorsky S-61	Davis	0900	0930	Bucket Drops	3UV		Aero Commander	Waycross	0900	0930	Aerial Supervision
N526MW	I	Kaman	Davis	0900	0930	Bucket Drops	0EB		Kingair	Waycross	0900	0930	Aerial Supervision
N161KA	I	Kaman	Davis	0900	0930	Bucket Drops	Various		Cessna 182's	Waycross	0900	0930	Aerial Detection and Supervision For State
N/A	I	UH -60 Georgia NG	Waycross	0900	0930	Bucket Drops Initial Attack For State							
N/A	I	UH -60 Georgia NG	Waycross	0900	0930	Bucket Drops Initial Attack For State							
N15HX	II	Bell 205++	Pogo	0830	0900	Bucket Drops							
N17HX	II	Bell 205++	Pogo	0830	0900	Bucket Drops							
N5738Y Okee 6	III	Bell 206	Pogo	0830	0900	Recon / Admin Bucket Drops as Needed							
N12HX	III	Bell 407	Pogo	0830	0900	Recon / Admin Bucket Drops as Needed							
Chopper 7	III	Bell 407 Georgia Forestry	Waycross	0900	0930	Recon / Admin For State Bucket Drops as Needed							

10. TASK/MISSION/ASSIGNMENT (Type/Function includes: Air Tactical, Retardant, Recon, Personnel Transport, Water Dropping, S&R, etc.)

TYPE/FUNCTION	NAME OF PERSONNEL OR CARGO (if applicable) OR INSTRUCTIONS FOR TACTICAL AIRCRAFT	MISSION START	FLY FROM	FLY TO
Type II Helicopter	Bucket Support For Line Personnel, Logistical Support	0900	Helibase	Fire and return
Type III Helicopter	Bucket Support / GIS Mapping / Recons as requested	0900	Helibase	Fire and return
Type I Helicopter	Bucket Support for Line Personnel and Initial Attack	0930	Helibase	Fire and return
Air Attack Platforms	Aerial Supervision	0930	Waycross Airport	Fire and return
State Detection Fixed Wing	Aerial Detection and IA for new fires	0930	Waycross Airport	Fire Patrol and Return

APPROVED BY: /s/ Alex Stone

DATE/TIME: 05-20-2007 / 1925

HEALTH AND SAFETY MESSAGE

SAFETY starts with *YOU*

We are ALL accountable for SAFE behaviors

INCIDENT: Big Turnaround Complex

DATE: May 21, 2007 Operational Period: DAY 0700 – 1900
SWING 1200 - 2400

Major Hazards and Risks:

- ❖ **Driving** – Wear seat belt, drive no faster than the speed limit, and headlights on at all times. Engines/tenders use chocks when parked. Ensure windshield is kept clean. Always use a spotter during backing. Conduct vehicle safety inspections prior to shift. No passengers unless a seat with seatbelt is provided (no riders in truck beds).
- ❖ **PPE** – Remember to wear all required PPE even during patrols and mop up operations. Protect your eyes from blowing dust and ash.
- ❖ **Weather** – Warm and dry conditions – avoid complacency by staying focused on the status of the fire. Remember **LOOK UP, LOOK DOWN, LOOK AROUND**. Post lookouts and be alert for re-burns near the fire's perimeter.
- ❖ **Personal Hygiene & Health** – Wash hands often to avoid getting or spreading germs. This helps in preventing sickness. Drink plenty of water – stay hydrated.

Fire Order of the Day – #4: Identify escape routes and safety zones, and make them known

Watch Out Situation of the Day



3. SAFETY ZONES AND ESCAPE ROUTES
NOT IDENTIFIED

Escape Routes/Safety Zone Checklist

Escape Routes:

- More than one escape route
- Scouted – soils, vegetation, slope
- Timed – slowest person, fatigue, dozer speed
- Marked – flagged for day and night use with lime green flagging

Safety Zones:

- Survivable without a shelter
- Natural – clean burn, water, bare soil/rock
- Manmade – constructed sites, roads
- Scouted for size and hazards
- Close enough considering escape time needed

Remember and Follow (IRPG):

- **The 10 Standard FIREFIGHTING ORDERS.**
- **The 18 WATCHOUT SITUATIONS.**
- **TACTICAL WATCH OUTS.**
- **WILDLAND-URBAN WATCH OUTS.**
- **The Common DENOMINATORS of Fire Behavior on TRAGEDY FIRES.**
- **The Downhill Line Construction Checklist.**
- **Power Line Safety.**

Incident Safety Officers: Bruce Malloy and Dave Wolf

INCIDENT RADIO COMMUNICATIONS PLAN		BIG TURNAROUND	DATE/TIME PREPARED 5/20/2007 1800		OPERATIONAL PERIOD DATE 5/21/07 TIME 0700-2400		
CH No.	CH NAME	ASSIGNMENT	RX FREQ WIDE NARROW	RX TONE NAC	TX FREQ WIDE NARROW	TX TONE NAC	MODE DIGITAL D ANALOG A MULTI M
1	OKE South Eddy Lookout	Command (primary to Bugaboo)	164.775 N		163.150N	123.0	A
2	OKE North Waycross	Command Repeater (linked to 5 & 13)	164.575 N		163.500N	206.5	A
3	GA Mutual Aid	Structural Groups to Local Engines	154.280 W		154.280 W		A
4	911 & Structural	Emergency Traffic	154.445 W	118.8	154.010 W	118.8	A
5	OKE East OKR	Command Repeater (linked to 5 & 13)	164.625 N		163.150 N	103.5	A
6	TAC 6	Firing Group	168.050 N		168.050 N		A
7	TAC 7	Swing, IA, Structural	168.600 N		168.600 N		A
8	TAC 8	Div G/EB, Div EJ-WM	164.1375 N		164.1375 N		A
9	TAC 9	Div.EC-EF	168.775 N		168.775 N		A
10	TAC 10	Common frequency with Blue Team & TFS Team for coordination (Ch 10 on the TXS & GA forestry plans/Ch 5 on the Blue Team plan)	169.900 N		169.900 N		A
11	TAC 11	Div EG-EI	168.200 N		168.200 N		A
12	Air-to-Ground	Big Turnaround Air	170.000 N		170.000 N		A
13	OKE West Stephen Foster St Park	Command Repeater (linked to 2 & 5)	167.125 N		163.150 N	156.7	A
14	Air Guard	Emergency contact & redirect with incident aircraft	168.625 N		168.625 N	110.9	A
15	unassigned	unassigned					A
16	Air Guard	Emergency contact & redirect with incident aircraft	168.625 N		168.625 N	110.9	A

Prepared by: Windy Berghofer, COML

REMARKS

Use TAC 10 for coordination with other incidents.

ICS-206 MEDICAL PLAN	1. Incident Name Big Turnaround Complex	2. Date Prepared 5/20/07	3. Time Prepared 1800	4. Operational Period DAY/SWING SHIFTS 5/21/07
--------------------------------	---	------------------------------------	---------------------------------	--

5. Incident Medical Aid Station

Medical Aid Stations	Location	EMT-P	No
Medical Unit Big Turnaround 912-496-4359	100 yards west of ICP in the double wide trailer	X	
Medic 1 Frank Abel	DP 203 Div G/EB	0700-1900	X
Medic 2 Steve Spangler	DP 113 Div EG/EJ	0700-1900	EMT-I
Medic 3 Rick Bostian	Div Break EJ/EK	1100-2300	X
Medic 4 Tyler Taapkan	DP 109 Div EC/EF	1100-2300	X

6. Transportation

A. Ambulance Services

Name	Address	Phone	Paramedics	
			Yes	No
Ware County EMS	Waycross Georgia (911)	912-287-4335	X	
Charlton Memorial EMS	1203 N Third St Folkston Ga (911)	912-496-2531	X	
TraumaOne(Air Ambulance Service)	Jacksonville (911)	800-223-4878	X	

7. Hospitals

Name	Address	Travel Time		Phone	Helipad		Burn Center	
		Air	Grnd		Yes	No	Yes	No
Charlton Memorial	1203 N 3rd St Folkston N30°50.80 W82°00.10	10 min	20 min.	912-496-2531	X			X
Satilla Regional (Northside of swamp)	410 Darling Ave Waycross Ga N31°13.56 W82°21.058	15 min	30 min	912-283-3030	X			X
Shands Hospital (Jax)	Jacksonville, FL	30 min	1.5 hrs	904-244-0411	X			X
Shands Hospital Level 1 trauma center	Gainesville Fl N29°38.33 W082°20.73 OPS – 123.02	45 min	1.5 hrs	352-265-0200 352-265-0222 904-244-0411	X*		X	

8. Medical Emergency Procedures

Medical emergencies will be reported to the Division Supervisor. The Division Supervisor will assume command and call for the closest line medic, and resources in the division that are EMT qualified. The Division Supervisor will notify communications by radio or cell phone. (Big Turnaround ICP 912-496-2111)

Communications to notify MEDL @ 904-955-0022 and dial 911 for ambulance.

The report should include type of illness/injury and exact location of the incident. Communications will clear the air for emergency traffic only and will request key personnel to report to communications. If an air medical helicopter is used within the fire perimeter, communications should notify the air operations director and helibase.

9. Prepared by (Medical Unit Leader) Jesus Hernandez	10. Reviewed by (Safety Officer) Bruce Malloy
--	---

INCIDENT EMERGENCY PLAN (IEP)

The goal of this Incident Emergency Plan (IEP) is to provide the guidelines necessary to Locate, Triage, Extricate, Treat and Transport accident Patients. The Division/Group Supervisor will initially oversee the emergency. Radio communication will be on the "Command Frequency". Names of injured or deceased individuals should not be given over the radio. Deceased individuals and their equipment are not to be moved, except to accomplish rescue work or to protect the health and safety of others. It is expected this organization will come from resources assigned within the Division or nearest adjoining forces.

DIVISION/GROUP SUPERVISOR

- Conduct Size-up of the Incident (Nature of Accident, Number/Type of Resources, Location)
- Coordinate "Line EMT" response to the accident (Utilize Closest EMT's).
- Begin "TRIAGE"
- Determine and initiate treatment and transportation needs
- Evaluate special needs (Law Enforcement, Heavy Rescue, Haz Mat)
- Coordinate with Air Attack for Air-Medical transportation needs
- Preserve the scene for accident investigation

MEDICAL GROUP SUPERVISOR (This position will be filled, only if needed)

- Supervise TRIAGE, Treatment and Transportation Unit Leaders.
- Place orders through Communications for ground ambulance, medical personnel, as needed
- Ensure proper security and traffic control.

TRIAGE UNIT LEADER (This position will be filled, only if needed)

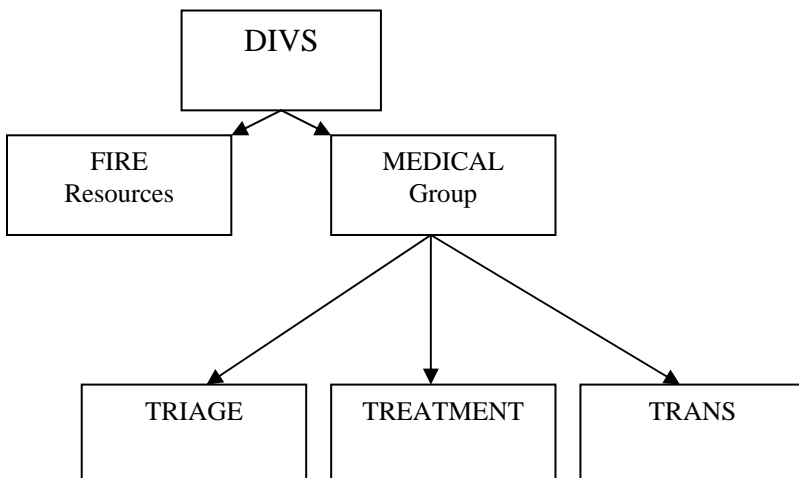
- Locate and TRIAGE all patients and relays information to Medical Group Supervisor.
- Ensure that Airway, Breathing and Circulation stabilization of patients is addressed during TRIAGE.
- Coordinate with Treatment Unit Leader for patient stabilization, extrication, and movement to treatment area.
- Utilize the "START" TRIAGE system.

TREATMENT UNIT LEADER (This position will be filled, only if needed)

- Establishes Immediate, Delayed and Minor treatment areas.
- Direct treatment and stabilization of Patients.
- Prioritize Patients for transport.
- Request medical personnel and supplies, as needed.
- Ensure continual TRIAGE of patients in treatment area.
- Coordinate with TRIAGE Unit leader for delivery of patients to the treatment area.
- Coordinate with the Transportation Unit Leader for delivery of patients to ambulances.
- Ensure documentation of patient conditions and treatments on TRIAGE tags.

TRANSPORTATION UNIT LEADER (This position will be filled, only if needed)

- Coordinate all patient transportation to medical facilities, air and ground.
- Establish communication with hospitals receiving patients.
- Coordinate with Treatment Unit Leader to determine number and category of patients.
- Designate ambulance/helicopter loading areas.
- Determine mode (air/ground) of patient transportation.
- Ensure patients information and destination is recorded.



- MINOR: Walking Wounded
- DELAYED: CAN Follow Simple Commands
- IMMEDIATE: Respirations have been restored
Respirations above 30
Radial Pulse Absent
Capillary Refill > 2 seconds
CAN NOT Follow Simple Command
- FATALITY: No Respirations after head tilt

EQUIPMENT DEMOB SCHEDULE

LAST SHIFT	EQUIPMENT NAME	E-#	AGENCY	KIND	DEMOB CITY	DEMOB STATE
LAST SHIFT MONDAY, TRAVEL TUESDAY						
05/21/2007	MNGPA ENGINE T6	E-145	BIA	ENG6	GRAND PORTAGE	MN
LAST SHIFT TUESDAY, TRAVEL WEDNESDAY						
05/22/2007	KY-LBF E-1	E-59	FS	ENG6	CADIZ	KY
05/22/2007	TN CNF 602	E-54	FS	ENG6	UNICOI	TN
05/22/2007	ENGINE WIND CAVE 628	E-295	NPS	ENG6	HOT SPRINGS	SD
LAST SHIFT WEDNESDAY, TRAVEL THURSDAY						
05/23/2007	ENGINE-MISS. SAND CRANE 6	E-324	FWS	ENG6	GAUTIER	MS
05/23/2007	ENGINE EVERGLADES 606	E-299	NPS	ENG6	HOMESTEAD	FL
05/23/2007	ENGINE-SAM HOUSTON-41-T5	E-290	FS	ENG5	LUFKIN	TX
05/23/2007	WOMBLE DOZER	E-67	FS	DOZ2	HOT SPRINGS	AR
LAST SHIFT THURSDAY, TRAVEL FRIDAY						
05/24/2007	ENGINE PIKE961	E-319	FS	ENG6	WOOLAND PARK	CO
05/24/2007	ENGINE RGD ENGINE 651	E-320	BLM	ENG6	CANON CITY	CO
05/24/2007	ENGINE - RAWLINGS 393	E-298	BLM	ENG6	RAWLINGS	WY
LAST SHIFT FRIDAY, TRAVEL SATURDAY						
05/25/2007	ENGINE - T6 - WOD - #192	E-297	BLM	ENG6	CODY	WY
05/25/2007	NATCHEZ TRACE ENGINE 40	E-107	NPS	ENG6	TUPELO	MS

UPCOMING OVERHEAD DEMOB

LAST SHIFT	NAME	TVL	JET PORT	REQ#	JOB	DEMOB CITY	DEMOB ST
------------	------	-----	-------------	------	-----	------------	-------------

LAST SHIFT MONDAY, TRAVEL TUESDAY

05/21/2007	MC CURRY, DAVID	AOV		O-235	STPS	ALABASTER	AL
05/21/2007	NORTHCOTT, JAY	AIR	ELP	O-129	DIVS	CLOUDCROFT	NM
05/21/2007	TATE, MELVIN	POV		O-409	HEB1	TALLAHASSEE	FL
05/21/2007	WOODWARD, BRYAN L		CHS	O-227	SEC1	SUMMERVILLE	SC

LAST SHIFT TUESDAY, TRAVEL WEDNESDAY

05/22/2007	BUMGARNER, STEVE	AIR	ELP	O-275	DIVS	LAS CRUCES	NM
05/22/2007	CULLUM, CHAD C	A/R	RAP	O-232	TFLD	RAPID CITY	SD
05/22/2007	EPPERSON, BEN	AIR	LIT	O-79	DRIV	KIRBY	AR
05/22/2007	HAY, JEFFERY	POV	BHM	O-241	EMTP	CANTON	AL
05/22/2007	HOLTON, MARY	AIR	CAE	O-360	EQTR	COLUMBIA	SC
05/22/2007	HOLTON, MARY	AIR	CAE	O-178	EQTR	COLUMBIA	SC
05/22/2007	MARTIN, OWEN	AOV		O-262	ATGS	WIGGINS	MS
05/22/2007	MCCLANAHAN, EDWARD	A/R	LWS	O-148	DOZB	GRANGEVILLE	ID
05/22/2007	ROOSE, PAUL	AOV		O-423	DOZB	NEW ELLENTON	SC
05/22/2007	SATHER, JOEL	A/R	MSO	O-230	FOBS	NOXON	MT
05/22/2007	SCHMECHEL, JOHN	AIR	SMF	O-157	DOZB	SONORA	CA
05/22/2007	SHIELDS, MARLENE	AIR	PRC	O-165	GISS	PRESCOTT	AZ
05/22/2007	SIMMONS, MICHAEL L	AIR	RNO	O-229	FOBS	GARDNERVILLE	NV
05/22/2007	TERRELL, JAMES	POV	BHM	O-214	EMTP	ALABASTER	AL
05/22/2007	THOMPSON, KELVIN	A/R	LWS	O-158	DOZB	GRANGEVILLE	ID
05/22/2007	WARDEN, JOSH	AIR	LWS	O-147	DOZB	GRANGEVILLE	ID
05/22/2007	WHITE, WALTER	POV		O-205	IADP	OCALA	FL

LAST SHIFT WEDNESDAY, TRAVEL THURSDAY

05/23/2007	AYERS, JEFF	AIR	ACV	O-291	TFLD	EUREKA-ARCATA	CA
05/23/2007	BOSTIAN, RICK	A/R	XNA	O-240	EMTP	LOWELL	AR
05/23/2007	BUCHANAN, JAMES (BU)	AIR	JAN	O-2	IRIN	JACKSON	MS
05/23/2007	CRAIG, SHAUN		SMF	O-244	STEN	SONORA	CA
05/23/2007	DISSEL, BRUCE	A/R	GJT	O-183	HELM	MOAB	UT
05/23/2007	GOOCH, JORDAN	POV		O-304	DRIV	FOLKSTON	GA
05/23/2007	JONES, MICHAEL	AIR	PDT	O-259	STDZ	PENDLETON	OR
05/23/2007	JUEDE, JUSTIN	AIR	RDD	O-298	TFLD	REDDING	CA
05/23/2007	LAYFIELD, WILLIAM	AOV		O-289	TFLD	TALLADEGA	AL
05/23/2007	LESTER, HARRY	AIR	IDA	O-267	SOF2	IDAHO FALLS	ID
05/23/2007	LUNDGREN, CHRIS	AIR	LWS	O-245	STEN	LEWISTON	ID
05/23/2007	MORGAN, MITCHEL	A/R	DRT	O-216	DOCL	DEL RIO	TX
05/23/2007	OWNBEY, JASON	A/R	RDD	O-292	TFLD	REDDING	CA
05/23/2007	RASH, MARK	AIR	LAS	O-249	DIVS	LAS VEGAS	NV
05/23/2007	SPANGLER, JOHN	POV		O-52	EMTP	ROANOKE	VA
05/23/2007	WELCH, STACEY A	AOV		O-226	SEC1	TOWNSEND	GA
05/23/2007	WHITE, TERRY	AIR	LWS	O-255	STDZ	LEWISTON	ID

LAST SHIFT THURSDAY, TRAVEL FRIDAY

05/24/2007	ABEL, TODD	AIR	PHX	O-281	DOZB	PRESCOTT	AZ
05/24/2007	CLARK, BERNARD O	AIR	PDX	O-266	SOF2	PORTLAND	OR
05/24/2007	CLOPTON, SHERRY	AIR	TYS	O-286	EDSD	KNOXVILLE	TN
05/24/2007	DAUGHERTY, CRAIG	AIR	ABQ	O-290	TFLD	ALBUQUEQRE	NM
05/24/2007	HAWKINS, STEVE B	AIR	BOI	O-279	DIVS	BAKER CITY	OR
05/24/2007	KIZER, BENJAMIN O	AIR	PDX	O-293	OSC2	WESTPORT	WA
05/24/2007	NEAL, HERSHAL A	AIR	TYS	O-300	HECM	WHITLEY	KY
05/24/2007	RABE, COLIN A	A/R	PDX	O-285	DOZB	SALEM	OR
05/24/2007	RANNE, DONALD L	AIR	PSC	O-271	SOF2	PENDLETON	OR
05/24/2007	SANDOW, PATRICIA M.			O-318	CASC	HOBOKEN	GA
05/24/2007	SCHWECKE, DIETRICH	AIR	GTF	O-269	SOF2	GREAT FALLS	MT
05/24/2007	WILLY, EDWARD D	AIR	LMT	O-280	DOZB	KLAMATH CITY	OR
05/24/2007	YOUNG, RICK L	AIR	CEC	O-277	DIVS	CRESENT CITY	CA

LAST SHIFT FRIDAY, TRAVEL SATURDAY

05/25/2007	BALLARD, JAMES	AOV	SHV	O-301	HECM	NACOGDOCHES	TX
05/25/2007	DAGNAN, DON	A/R	PHL	O-308	HELM	PHILADELPHA	PA
05/25/2007	ERRINGER, ANTHONY	AIR	ABQ	O-121	RADO	ALBUQUERQUE	NM
05/25/2007	KELLEY, WANDA	REN	CHA	O-287	EDSD	CLEVELAND	TN
05/25/2007	LAURIE, GREG	A/R	DEN	O-299	HELM	DENVER	CO
05/25/2007	STEVENSON, CHRIS	AOV		O-305	FOBS	MC COOL	MS
05/25/2007	STROM, JOHN M	AOV	FSM	O-248	DIVS	BOONESVILLE	AR
05/25/2007	SUMMERFIELD, MICHAEL	AIR	BOI	O-320	HEB2	MC CALL	ID
05/25/2007	URE, HOWARD	A/R	IAH	O-312	INCM	ETILE	TX
05/25/2007	YUNEMAN, THOMAS	AIR	JFK	O-406.12	FACL	NEW YORK	NY

**IF YOU ARE PLANNING TO TRAVEL HOME BY AIR PLEASE SEE DEMOB TO
CONFIRM YOUR FLIGHT INFO AT LEAST 36 HOURS PRIOR TO TRAVEL!!**