

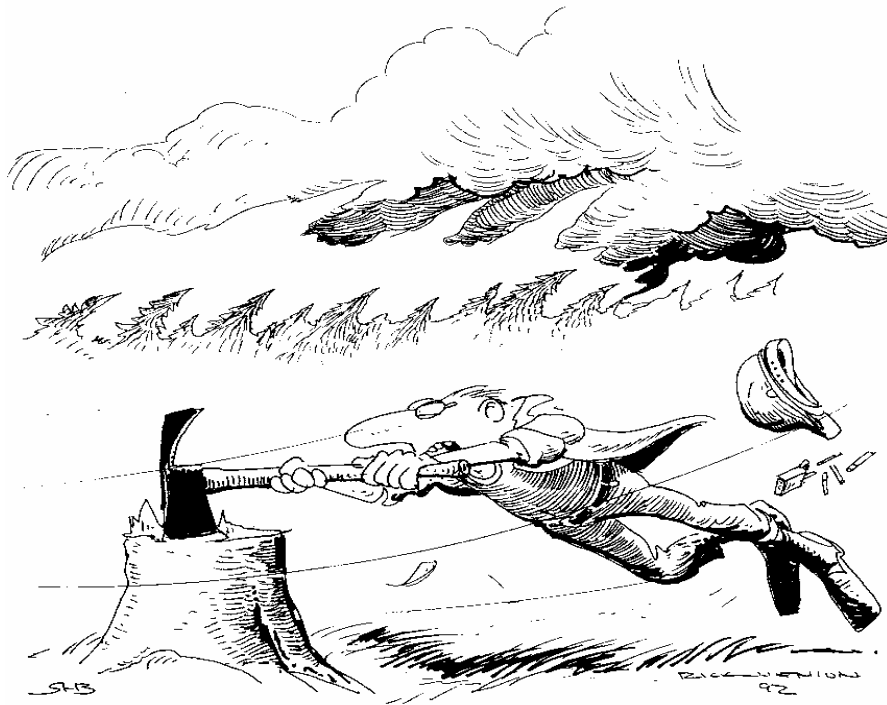
BIG TURNAROUND COMPLEX

EAST ZONE

INCIDENT ACTION PLAN

May 22, 2007

0700 - 2400



15. WIND INCREASES AND/OR CHANGES
DIRECTION

| | | | | | | | | | | | | |
|--|---|--|---|---|--|--|---|--|---|--|---|--|
| <p align="center">INCIDENT OBJECTIVES</p> | <p>1. INCIDENT NAME</p> <p align="center">Big Turnaround Complex East Zone</p> | <p>2. DATE PREPARED</p> <p align="center">05/21/2007</p> | <p>3. TIME PREPARED</p> <p align="center">2230</p> | | | | | | | | | |
| <p>4. OPERATIONAL PERIOD (DATE/TIME)</p> <p align="center">May 22, 2007 0700 - 2400 OPERATIONAL PERIOD</p> | | | | | | | | | | | | |
| <p>5. GENERAL CONTROL OBJECTIVES FOR THE INCIDENT (INCLUDE ALTERNATIVES)</p> <ol style="list-style-type: none"> 1. Ensure firefighter and public safety through adherence to all safety standards, maintaining situational awareness and appropriate implementation of evacuations, closures, and temporary flight restrictions. 2. Protect / minimize threats / loss to private investments; improvements and facilities in Stephen F. Foster State Park; key cultural features as listed in the Delegation of Authority; and protect the integrity of the Okefenokee Wilderness. 3. Manage the fires within the swamp under a containment strategy in accordance with suppression actions outlined in the WFSA. In the East Zone, contain the fire West of the Swamp Perimeter Road in Charlton County; South and west of Hwy. 1 and the CSX Railroad line; and within the Swamp Perimeter Road. 4. Manage the incident cost effectively and in an efficient manner to contain the fire by June 17, 2007 at a cost below \$20,200,000. | | | | | | | | | | | | |
| <p>6. WEATHER FORCAST FOR OPERATIONAL PERIOD</p> <p align="center">See the attached Weather and Fire Behavior Forecast for detailed forecast information.</p> | | | | | | | | | | | | |
| <p>7. GENERAL/SAFETY MESSAGE</p> <p>The CSX Railroad runs parallel to Highway 1 in divisions Alpha, Bravo and the northwest portion of Charlie. There are 6 to 35 trains per day along this track and there are few automatic railroad crossing warning devices. All personnel must stop before the railroad crossing and verify it is safe before proceeding across the tracks.</p> | | | | | | | | | | | | |
| <table border="0"> <tr> <td><input checked="" type="checkbox"/> ORGANIZATION LIST (ICS 203)</td> <td><input checked="" type="checkbox"/> MEDICAL PLAN (ICS 206)</td> <td><input checked="" type="checkbox"/> SAFETY MESSAGE</td> </tr> <tr> <td><input checked="" type="checkbox"/> ASSIGNMENT LIST (ICS 204)</td> <td><input checked="" type="checkbox"/> AIR OPS. SUMMARY (ICS 220)</td> <td><input checked="" type="checkbox"/> FIRE WEATHER FORECAST</td> </tr> <tr> <td><input checked="" type="checkbox"/> COMMUNICATION PLAN (ICS 205)</td> <td><input checked="" type="checkbox"/> INCIDENT EMERGENCY PLAN</td> <td><input checked="" type="checkbox"/> FIRE BEHAVIOR FORECAST</td> </tr> </table> | | | | <input checked="" type="checkbox"/> ORGANIZATION LIST (ICS 203) | <input checked="" type="checkbox"/> MEDICAL PLAN (ICS 206) | <input checked="" type="checkbox"/> SAFETY MESSAGE | <input checked="" type="checkbox"/> ASSIGNMENT LIST (ICS 204) | <input checked="" type="checkbox"/> AIR OPS. SUMMARY (ICS 220) | <input checked="" type="checkbox"/> FIRE WEATHER FORECAST | <input checked="" type="checkbox"/> COMMUNICATION PLAN (ICS 205) | <input checked="" type="checkbox"/> INCIDENT EMERGENCY PLAN | <input checked="" type="checkbox"/> FIRE BEHAVIOR FORECAST |
| <input checked="" type="checkbox"/> ORGANIZATION LIST (ICS 203) | <input checked="" type="checkbox"/> MEDICAL PLAN (ICS 206) | <input checked="" type="checkbox"/> SAFETY MESSAGE | | | | | | | | | | |
| <input checked="" type="checkbox"/> ASSIGNMENT LIST (ICS 204) | <input checked="" type="checkbox"/> AIR OPS. SUMMARY (ICS 220) | <input checked="" type="checkbox"/> FIRE WEATHER FORECAST | | | | | | | | | | |
| <input checked="" type="checkbox"/> COMMUNICATION PLAN (ICS 205) | <input checked="" type="checkbox"/> INCIDENT EMERGENCY PLAN | <input checked="" type="checkbox"/> FIRE BEHAVIOR FORECAST | | | | | | | | | | |
| <p>ICS 202</p> | <p>9. PREPARED BY (PLANNING SECTION CHIEF)</p> <p>Paul Summerfelt</p> | <p>10. APPROVED BY (INCIDENT COMMANDER)</p> <p>Dan Oltrogge</p> | | | | | | | | | | |

**** Southwest Area IMT ****

| ORGANIZATION ASSIGNMENT LIST | | 9. Operations Section | |
|---|--|-------------------------------|--|
| 1. Incident Name BIG TURNAROUND COMPLEX – EAST ZONE | | Chief | Curtis Heaton/Pruett Small Chris Wilcox (T)/Todd Richards (T) |
| 2. Date 05/21/2007 | | 3. Time 2200 | |
| 4. Operational Period May 22, 2007 0700 - 2400 | | | |
| Position | Name | | |
| 5. Incident Commander and Staff | | | |
| Incident Commander | Dan Oltrogge | | |
| Safety Officer | Bruce Malloy / Dave Wolf | | |
| Information Officer | Karen Takai / Jennifer Plyer (T) | | |
| Liaison Officer | Sam Whitted | | |
| 6. Agency Representative | | | |
| Agency | Name | | |
| FWS | George Constantino/Maury Bedford | | |
| FWS | Howard McCullough | | |
| FWS | Russ Langsford | | |
| GFC | Eric Harris | | |
| Charlton Co. EM | Sgt. Joey Chancy | | |
| GEMA/Charlton Co. | Gary Rice | | |
| GEMA/Ware Co. | Vicki Thompson | | |
| 7. Planning Section | | | |
| Chief | Paul Summerfelt | | |
| Resources Unit | Lee Thornhill/ Glenda Womack/ Dave Berens (T) | | |
| Situation Unit | Dave Dobbs | | |
| FBAN | Brad Smith/Stewart Turner | | |
| GIS | Rick Crawford | | |
| IMET | Phil Manuel | | |
| Demobilization Unit | Candace Hart | | |
| Human Resources | | | |
| Documentation Unit | Mark Morgan | | |
| Computer Specialist | Frank Webster | | |
| 8. Logistics Section | | | |
| Chief | Ed Freed/JR Calkins (T) | | |
| Supply Unit | Marcus Medina | | |
| Facilities Unit | Thom Yuneman | | |
| Ground Support Unit | Ben Garcia | | |
| Communications Unit | Carl Berghofer/Jim Rallis (T) | | |
| Medical Unit | Jesus Hernandez | | |
| Security Manager | Walter Sellers | | |
| Food Unit | Sharon Taube | | |
| | | 9. Operations Section | |
| | | a. Branch I - Division/Groups | |
| BRANCH DIRECTOR | | Ben Kizer/Duane Tewa (T) | |
| Division/Group | | A-B | Rick Young |
| Division/Group | | C-E | Craig Daugherty |
| Division/Group | | F | Charley Burns/ Kato Ichiyasu (T) |
| Division/Group | | Swamp Park | Steve Hawkins |
| Division/Group | | | |
| Division/Group | | | |
| b. Branch II - Division/Groups | | | |
| BRANCH DIRECTOR | | Allen Mitchell | |
| Division/Group | | G-I | Lance Elmore |
| Division/Group | | J-M | Steve Bumgarner |
| Division/Group | | Firing Group | Jeff Andrews |
| Division/Group | | Structure Group | Jayson Coil |
| c. Division/Groups | | | |
| Division/Group | | Contingency | Ronald Bush |
| Division/Group | | IA | Abel/Thompson (T) |
| Division/Group | | | |
| d. Air Operations Branch | | | |
| Air Operations Branch Director | | Alex Stone | |
| Air Attack Supervisor | | Dan Eckstein / John Encino | |
| Air Support Group Supervisor | | Bob Skeen | |
| Helibase Manager | | Zoni Anzalone | |
| | | | |
| 10. Finance Section | | | |
| Chief | | Darla Jo Quick | |
| Time Unit | | Lisa Angle | |
| Procurement Unit | | | |
| Compensation/Claims Unit | | Gerri Talgo | |
| Cost Unit | | Roxane Raley | |
| Prepared by (Resource Unit Leader) Glenda Womack | | | |

Fire Weather Forecast

FORECAST NO: 18

NAME OF FIRE: Big Turnaround Complex

PREDICTION FOR: Day and Swing Shift

UNIT: Okefenokee Wildlife Refuge

SHIFT DATE: Tuesday 05/22/07

SIGNED: Phil Manuel

TIME AND DATE 1900

Incident Meteorologist

FORECAST ISSUED: 05/21/2007

WEATHER DISCUSSION:

Critical fire weather conditions may develop this afternoon due to low afternoon humidity and increasing wind speeds. High pressure will remain in control today. As a result, anticipate low dewpoints with an easterly surface wind. A dry front is forecast to move south along the Atlantic Coast...crossing the incident area from the northeast on Wednesday. Winds will shift to the northeast and increase in speed after its passage.

The main concern: **Low afternoon humidity. Increasing winds ahead of an approaching front.**

WEATHER FORECAST TUESDAY:

WEATHER: Mostly sunny and dry.

MAX TEMPERATURES: Around 88. (24 hour trend = unchanged)

MIN HUMIDITY: 24 to 28 percent (24 hour trend = up 3 percent)

20 FT WINDS: Variable 3 mph through 0930...then east 8 to 14 mph during the late morning and afternoon with gusts to 19 mph.

STABILITY/INVERSION: Mixing heights around 6000 ft in the afternoon.

Dispersion Index 64. Haines Index 4.

TRANSPORT WINDS: East 22 mph.

WEATHER FORECAST TUESDAY NIGHT:

WEATHER: Partly cloudy. Mild.

MIN TEMPERATURES: Low around 59. (24 hour trend = up 7)

MAX HUMIDITY: Recovery...70 to 90 percent.

20 FT WINDS: East 6 to 10 mph during the evening...becoming northeast 2 to 6 mph after midnight.

STABILITY/INVERSION: Inversion to 400 feet. Dispersion Index 6.

OUTLOOK FOR WEDNESDAY: Partly Cloudy. Breezy. An isolated shower or thunderstorm possible. Northeast 5 to 10 mph in the morning...becoming east 10 to 15 mph with gusts to 22 mph in the afternoon. High around 85. Minimum humidity 32 to 37 percent.

SUNRISE/SUNSET: Tuesday May 22nd...0629/2019

EXTENDED...

High pressure will remain centered to our north. An easterly wind flow off the ocean will continue. Little or no threat of precipitation is anticipated for the remainder of the week.

| | Thursday | Friday | Saturday | Sunday |
|----------------|------------|----------|----------|----------|
| Low | 62 | 59 | 56 | 58 |
| High | 85 | 84 | 86 | 86 |
| Min RH | 36 to 42 | 33 to 38 | 30 to 35 | 30 to 35 |
| Wind | E 10 to 15 | E 6-12 | E 4-8 | SE 3-6 |
| Weather | Pt. ClDY | Pt. ClDY | Pt. ClDY | Pt. ClDY |
| POP | 5 | 5 | 10 | 10 |

Fire Behavior Forecast

| | |
|---|--|
| <u>Forecast No. 33</u> | <u>Prediction for Day Shift</u> |
| <u>Name of Fire: Big Turnaround Complex</u> | <u>Shift Date: Tuesday May 22, 2007</u> |
| <u>Time and Date Forecast Issued</u> <u>1800 hrs 5/21/2007</u> | <u>Signed : Brad Smith</u> <u>Fire Behavior Analyst</u> |

Weather Summary (See Detailed Weather Forecast in the IAP):

There will be a full 10 hours of sunshine today with temperatures reaching the upper 80's. Minimum RH will range from 24-28%. East winds will range from 8-14mph sustained in the afternoon. A Haines index of 4 and a dispersion index of 64 are forecast. The national weather service has issued a red flag for the fire area.

General Fire Behavior: Low RH, maximum temperatures approaching 90, brisk east winds will combine with historic fuel dryness to produce very active fire behavior in all fuel types. Expect moderate fire behavior after the morning inversion breaks around 0930. Fire behavior will increase to active by 1100 and very active during the peak hours 1600 through 2000 hrs. There is a potential for extreme fire behavior from 1800 to 1900 hours. During peak hours swamp shrub and swamp bay fuels will burn intensely on the surface producing 8 to 15 foot lengths and spread rates of 10 to 12 chains per hour. Brisk east winds will facilitate torching and short range spotting out to 100 yards. The swamp fuels will produce moderate backing spread rates of 2-4 chains per hour. During peak burning hours, pine fuels will spread at 60-80 chains/hr with very high intensities in the palmetto/gallberry rough (15-30ft flame lengths). Single tree and group torching in open canopy pine can produce spotting out to 300 yards. Young, closed canopy pine plantations (5-10yrs) have the potential to support sustained crown fire. Probability of ignition will be 90% during the peak burning period. Expect an intensification of fire behavior with the arrival of the sea breeze which could be from 1700 to 2000 hrs.

Specific Fire Behavior:

Branch I: Low to moderate intensity burnout along portions of the swamp edge break from DIV D to the branch break has created a high potential for reburn. This potential will increase over the next week as needle cast and leaf fall accumulates. Rekindle in needle cast will continue to occur in the burned area from DIV H to DIV B. Needle cast has filled in containment lines providing an escape path to green fuels for any reburn occurring near containment lines.

Branch II: The fire edge has passed Coward Lake and is established in the swamp shrub fuels. The fire edge will continue to back to the East. Backing spread during peak hours in the swamp shrub will range from 2-4 chains per hour moving near 1/3 mile per day.

Air Operations: Inversions will persist until 0900. Expect heavy smoke production from interior burning from 1300 to 2000 hrs.

Safety: Firefighters would not consider beginning an assignment without donning their personal protective equipment (PPE) which provides added protection in the fire environment. It is second nature for any firefighter. Another piece of PPE that firefighters should arm themselves with is the forecast fire weather and fire behavior. This added piece of PPE will serve them well in the fire environment.

| | | | | | | | |
|---|--|--|---|---------------------------|---------------------------------|-------------------|------------------|
| DIVISION ASSIGNMENT LIST | | | 1. Branch 1 Ben Kizer / Duane Tewa (T) | | 2. Division/Group A-B | | |
| 3. Incident Name Big Turnaround Complex – East Zone | | | 4. Operational Period Date: 05/22/2007 | | Time: 0700 - 1900 | | |
| 5. Operations Personnel | | | | | | | |
| Operations Chief | | Curtis Heaton/Chris Wilcox(T) Pruett Small/Todd Richards(T) | | Division/Group Supervisor | | Rick Young | |
| 6. Resources Assigned this Period | | | | | | | |
| Strike Team/Task Force/ Resource Designator | | Leader | | Number Persons | Trans. Needed | Drop Off PT./Time | Pick Up PT./Time |
| Task Force 4 | | Mike Smith | | 1 | N | ICP 0700 | ICP 1900 |
| Pat Rick T2 C-10 | | James Braham | | 20 | N | ICP 0700 | ICP 1900 |
| NFC #2 T6 E-235 | | Earl Wooten | | 2 | N | ICP 0700 | ICP 1900 |
| Rocky Mtn. T6 E-429 | | Mike Smith | | 3 | N | ICP 0700 | ICP 1900 |
| Fire Trax 3 10-WY T6 E-431 | | Levi Drake | | 3 | N | ICP 0700 | ICP 1900 |
| Task Force 9 | | Shaun Craig/Josh. Warden (T) | | 2 | N | ICP 0700 | ICP 1900 |
| Greyback NCR5A C-13 | | Matt Elliot | | 20 | N | ICP 0700 | ICP 1900 |
| Sam Houston T5 E-290 | | Jason Klawinsky | | 3 | N | ICP 0700 | ICP 1900 |
| Pike 961 T6 E-319 | | Thomas Barter | | 3 | N | ICP 0700 | ICP 1900 |
| RGD Engine 651 E-320 | | Matthew Norden | | 3 | N | ICP 0700 | ICP 1900 |
| T&Y WAT3 E-241 | | Tim Wood | | 1 | N | ICP 0700 | ICP 1900 |
| SOF2 | | D. Schwecke | | 1 | N | ICP 0700 | ICP 1900 |
| Medic 1 | | Frank Abel | | 1 | N | ICP 0700 | ICP 1900 |
| | | | | | | | |
| | | | | | | | |
| | | | | | | | |
| | | | | | | | |
| | | | | | | | |
| | | | | | | | |
| | | | | | | | |
| | | | | | | | |
| | | | | | | | |
| | | | | | | | |
| 7. Control Operations Patrol and mop-up 100 feet. Continue to suppress re-burn pockets. Task Force 4 and crews to secure accessible area in and around Swamp Park area. | | | | | | | |
| 8. Special Instructions GFC will assume command on escapes / IA outside Perimeter Road, DIV groups will assist as needed. Include snag awareness in all briefings. All firing must be approved & coordinated thru Branch. All GPS Info needs to be collected in DATUM WGS 84 (Degree Decimal Minute). | | | | | | | |
| 9. Division/Group Communication Summary | | | | | | | |
| Function | Frequency | System | Channel | Function | Frequency | System | Channel |
| Command | Rx: 164.5750 Tx: 163.1500 Tone 206.5 | King NIFC | 2 | Air to Ground | 170.000 | King NIFC | 12 |
| Tactical Div/Group | 164.1375 N | King NIFC | 8 | Air to Ground | | King NIFC | |
| Prepared by (Resource Unit Leader) /s/ David Berens (T) | | Approved by (Planning Section Chief) /s/ Paul Summerfelt | | | Date 05/21/2007 | | Time 2200 |

| | | | | | | | |
|---|--|--|--|------------------------------|---------------------------------|------------------------|------------------|
| DIVISION ASSIGNMENT LIST | | | 1. Branch 1 Ben Kizer / Duane Tewa (T) | | 2. Division/Group C-E | | |
| 3. Incident Name Big Turnaround Complex – East Zone | | | 4. Operational Period Date: 05/22/2007 Time: 0700 - 1900 | | | | |
| 5. Operations Personnel | | | | | | | |
| Operations Chief | | Curtis Heaton/Chris Wilcox(T) Pruett Small/Todd Richards(T) | | Division/Group Supervisor | | Craig Daugherty | |
| 6. Resources Assigned this Period | | | | | | | |
| Strike Team/Task Force/ Resource Designator | Leader | | Number Persons | Trans. Needed | Drop Off PT./Time | | Pick Up PT./Time |
| Task Force 3 | Chad Cullum | | 1 | N | ICP 0700 | | ICP 1900 |
| SRV 14 T2 C-7 | Rodolfo Cervantes | | 20 | N | ICP 0700 | | ICP 1900 |
| Showlow Brush 344 T6 E-237 | Darren Cluff | | 3 | N | ICP 0700 | | ICP 1900 |
| AL-Coush Eng 8061 T6 E-291 | Nathan Williams | | 2 | N | ICP 0700 | | ICP 1900 |
| RA-Cour 4633 T6 E-430 | Jerry Fullerton | | 3 | N | ICP 0700 | | ICP 1900 |
| Sunfire #1 T6 E-433 | Dennis McMillian | | 3 | N | ICP 0700 | | ICP 1900 |
| T&Y WAT1 E-499 | Marcus Black | | 1 | N | ICP 0700 | | ICP 1900 |
| Strike Team 5 | David Reid | | 1 | N | ICP 0700 | | ICP 1900 |
| West Metro T6 E-432 | Mark Corbett | | 3 | N | ICP 0700 | | ICP 1900 |
| Colorado WFS T6 E-434 | | | 3 | N | ICP 0700 | | ICP 1900 |
| Engine 4632 T6 E-435 | Scott Logan | | 3 | N | ICP 0700 | | ICP 1900 |
| Engine 204 T6 E-436 | Matt Dayer | | 3 | N | ICP 0700 | | ICP 1900 |
| SHF-611 T6 E-437 | Kory Bowser | | 3 | N | ICP 0700 | | ICP 1900 |
| Rocky MT Fire T6 E-438 | Courtney Wenzel | | 3 | N | ICP 0700 | | ICP 1900 |
| | | | | | | | |
| Excavator E-259 | Craig Crawford | | 3 | N | ICP 0700 | | ICP 1900 |
| SOF2 | Harry Lester | | 1 | N | ICP 0700 | | ICP 1900 |
| Medic 4 | Tyler Taapken | | 1 | N | ICP 0700 | | ICP 1900 |
| 7. Control Operations Continue mop-up Division E. | | | | | | | |
| 8. Special Instructions GFC will assume command on escapes / IA outside Perimeter Road, DIV groups will assist as needed. Include snag awareness in all briefings. All firing must be approved & coordinated thru Branch. All GPS Info Needs to be collected in DATUM WGS 84 (Degree Decimal Minute). | | | | | | | |
| 9. Division/Group Communication Summary | | | | | | | |
| Function | Frequency | System | Channel | Function | Frequency | System | Channel |
| Command | Rx: 164.6250 Tx: 163.1500 Tone 103.5 | | 5 | Air to Ground | 170.000 | King NIFC | 12 |
| Tactical Div/Group | 168.7750 | King NIFC | 9 | Air to Ground | | King NIFC | |
| Prepared by (Resource Unit Leader) /s/ David Berens (T) | | Approved by (Planning Section Chief) /s/ Paul Summerfelt | | | Date 05/21/2007 | | Time 2200 |

| | | | | | | | |
|--|--|---|--|---------------------------|-------------------------------|------------------------------------|---------|
| DIVISION ASSIGNMENT LIST | | | 1. Branch 1 Ben Kizer / Duane Tewa (T) | | 2. Division/Group F | | |
| 3. Incident Name Big Turnaround Complex – East Zone | | | 4. Operational Period Date: 05/22/2007 Time: 1200 - 2400 | | | | |
| 5. Operations Personnel | | | | | | | |
| Operations Chief | | Heaton /Wilcox (T) Small / Richards (T) | | Division/Group Supervisor | | Charley Burns Kato Ichiyasu (T) | |
| 6. Resources Assigned this Period | | | | | | | |
| Strike Team/Task Force/ Resource Designator | Leader | Number Persons | Trans. Needed | Drop Off PT./Time | Pick Up PT./Time | | |
| Strike Team 1 | Rodney Smartlowit / Sumpter (T) | 2 | N | ICP 1200 | ICP 2400 | | |
| Langley Eng T6 E-17 | Shawn Langley | 2 | N | ICP 1200 | ICP 2400 | | |
| Cranes Wildfire T6 E-18 | Don Crane | 2 | N | ICP 1200 | ICP 2400 | | |
| Smokey Mt Eng 1. T6 E-53 | James Myers | 2 | N | ICP 1200 | ICP 2400 | | |
| Wildland Fire Service T6 E-23 | Trixie Smith | 2 | N | ICP 1200 | ICP 2400 | | |
| | | | | | | | |
| Strike Team 2 | Michael Jones | 1 | N | ICP 1200 | ICP 2400 | | |
| DOZB | E. Willy | 1 | N | ICP 1200 | ICP 2400 | | |
| Tipton & Young JD750 E-9 | Billy Chapman | 1 | N | ICP 1200 | ICP 2400 | | |
| Tipton & Young JD750 E-11 | Jason Gregory | 1 | N | ICP 1200 | ICP 2400 | | |
| Tipton & Young JD750 E-10 | Jimmy Zimmerman | 1 | N | ICP 1200 | ICP 2400 | | |
| Task Force 5 | Jason Ownbey / Justin Juede (t) | 2 | N | ICP 1200 | ICP 2400 | | |
| Eng 2132 T3 E-64 | Mike Lerma | 3 | N | ICP 1200 | ICP 2400 | | |
| Wildland Fire Service T3 E-75 | Jack Plaster | 2 | N | ICP 1200 | ICP 2400 | | |
| Wildland Fire Service T6 E-21 | Taft Haddon | 2 | N | ICP 1200 | ICP 2400 | | |
| Wildland Fire Service T6 E-22 | Gary Parker | 2 | N | ICP 1200 | ICP 2400 | | |
| NATR Eng 40 T6 E-107 | Mark Whipps | 3 | N | ICP 1200 | ICP 2400 | | |
| Tipton & Young WT2 E-16 | Mark Hudgins | 1 | N | ICP 1200 | ICP 2400 | | |
| | | | | | | | |
| Medic 7 | Shane Powers | 1 | N | ICP 1200 | ICP 2400 | | |
| SOF2 | George Marcott | 1 | N | ICP 1200 | ICP 2400 | | |
| SOF2 | Donald Ranne | 1 | N | ICP 1200 | ICP 2400 | | |
| 7. Control Operations Continue to control and mop up 100 to 200 feet. Be prepared to assist Firing Group and continue burnout ops. | | | | | | | |
| 8. Special Instructions GFC will assume command on escapes / IA outside Perimeter Road, DIV groups will assist as needed. Include snag awareness in all briefings All firing must be approved & coordinated thru Branch. All GPS Info needs to be collected in DATUM WGS 84 (Degree Decimal Minute). | | | | | | | |
| 9. Division/Group Communication Summary | | | | | | | |
| Function | Frequency | System | Channel | Function | Frequency | System | Channel |
| Command | Rx: 164.5750 Tx: 163.1500 Tone 206.5 | King NIFC | 2 | Air to Ground | 170.000 | King NIFC | 12 |
| Tactical Div/Group | 164.1375 | King NIFC | 8 | Air to Ground | | King NIFC | |
| Prepared by (Resource Unit Leader) /s/ David Berens (T) | | Approved by (Planning Section Chief) /s/ Paul Summerfelt | | Date 05/21/2007 | | Time 2000 | |

| | | | | | | | |
|---|---|---|---------------------|---------------------------------|------------------|--------------|---------|
| DIVISION ASSIGNMENT LIST | | 1. Branch 2 Allen Mitchell | | 2. Division/Group G-I | | | |
| 3. Incident Name Big Turnaround Complex – East Zone | | 4. Operational Period Date: 05/22/2007 | | Time: 0700 - 1900 | | | |
| 5. Operations Personnel | | | | | | | |
| Operations Chief | C. Heaton/C. Wilcox(T) P. Small/Todd Richards(T) | Division/Group Supervisor | Lance Elmore | | | | |
| 6. Resources Assigned this Period | | | | | | | |
| Strike Team/Task Force/ Resource Designator | Leader | Number Persons | Trans. Needed | Drop Off PT./Time | Pick Up PT./Time | | |
| Task Force 1 | Mike Hayes/Dana Bagnoli (T) | 2 | N | ICP 0700 | ICP 1900 | | |
| Rowling 393 T6 E-298 | Chris Hathaway | 3 | N | ICP 0700 | ICP 1900 | | |
| Everglades 606 T6 E-299 | Jackson Weer | 3 | N | ICP 0700 | ICP 1900 | | |
| Wildland Fire Service T6 E-24 | Paul Catlett | 2 | N | ICP 0700 | ICP 1900 | | |
| WAT1 T&Y E-500 | Dorothy Aller | 1 | N | ICP 0700 | ICP 1900 | | |
| Task Force 2 | Marks | 1 | N | ICP 0700 | ICP 1900 | | |
| Mescalero ENG T6 E-323 | Clyde Davis | 4 | N | ICP 0700 | ICP 1900 | | |
| Ferguson NCC 9B C-12 | Tim Sickles | 20 | N | ICP 0700 | ICP 1900 | | |
| BLM E-612 T6 E-119 | Arcenio Solano | 3 | N | ICP 0700 | ICP 1900 | | |
| BIA 801 T6 E-292 | David Rabon | 2 | N | ICP 0700 | ICP 1900 | | |
| WAT1 T&Y E-241 | | 1 | N | ICP 0700 | ICP 1900 | | |
| | | | | | | | |
| Pro Temps Inc #2 T6 E-142 | George Rogers | 2 | N | ICP 0700 | ICP 1900 | | |
| South Fork Eng T6 E-240 | Barry Melloan | 2 | N | ICP 0700 | ICP 1900 | | |
| Pro Temp Inc #3 T5 E-144 | David Jones | 3 | N | ICP 0700 | ICP 1900 | | |
| Savannah River #3 T2 E-169 | Thomas Wilson | 2 | N | ICP 0700 | ICP 1900 | | |
| Godzilla (OKR Resource) | | 3 | N | ICP 0700 | ICP 1900 | | |
| STDZ | Trey Glineski | 1 | N | ICP 0700 | ICP 1900 | | |
| SFS Inc DOZ2 E-378 | | 1 | N | ICP 0700 | ICP 1900 | | |
| DOZB | Albert Huggins | 1 | N | ICP 0700 | ICP 1900 | | |
| TPLU E-154 | Buddy Wood | 1 | N | ICP 0700 | ICP 1900 | | |
| DOZB | C. Rabe | 1 | N | ICP 0700 | ICP 1900 | | |
| TPLU E-155 | Mike Moore | 1 | N | ICP 0700 | ICP 1900 | | |
| DOZB | John Schmechel | 1 | N | ICP 0700 | ICP 1900 | | |
| SFS Inc DOZ2 E-273 | Rob Oneal | 1 | N | ICP 0700 | ICP 1900 | | |
| SOF2 | William Miller | 1 | N | ICP 0700 | ICP 1900 | | |
| Medic 2 | Steve Spangler | 1 | N | ICP 0700 | ICP 1900 | | |
| 7. Control Operations Prepare Toledo property for potential runs from Coward Lake. Prep Chesser Island as necessary. | | | | | | | |
| 8. Special Instructions GFC will assume command on escapes / IA outside Perimeter Road, DIV groups will assist as needed. Include snag awareness in all briefings. Work with landowner prior to plowing private lands. All firing must be approved & coordinated thru Branch. All GPS Info needs to be collected in DATUM WGS 84 (Degree Decimal Minute) | | | | | | | |
| 9. Division/Group Communication Summary | | | | | | | |
| Function | Frequency | System | Channel | Function | Frequency | System | Channel |
| Command | Rx: 164.7750 Tx: 163.1500 Tone 123.0 | | 1 | Air to Ground | 170.000 | King NIFC | 12 |
| Tactical Div/Group | 168.2000 | King NIFC | 11 | Air to Ground | | King NIFC | |
| Prepared by (Resource Unit Leader) /s/ David Berens (T) | | Approved by (Planning Section Chief) /s/ Paul Summerfelt | | Date 05/21/2007 | | Time 2200 | |

| | | | | | | | |
|---|--|--|------------------|---|------------------|--------------|---------|
| DIVISION ASSIGNMENT LIST | | 1. Branch 2 Allen Mitchel | | 2. Division/Group J-M | | | |
| 3. Incident Name Big Turnaround Complex – East Zone | | 4. Operational Period Date: 05/22/2007 Time: 0700 - 1900 | | | | | |
| 5. Operations Personnel | | | | | | | |
| Operations Chief | | Curtis Heaton/Chris Wilcox(T) Pruett Small/Todd Richards(T) | | Division/Group Supervisor Steve Bumgarner | | | |
| 6. Resources Assigned this Period | | | | | | | |
| Strike Team/Task Force/ Resource Designator | Leader | Number Persons | Trans. Needed | Drop Off PT./Time | Pick Up PT./Time | | |
| Task Force 7 | Carl Schwope | 1 | N | ICP 0700 | ICP 1900 | | |
| NMCAF Eng 7 T6 E-138 | Eddy Romero | 3 | N | ICP 0700 | ICP 1900 | | |
| TX Fire Eng 151 T6 E-239 | Chris Balough | 2 | N | ICP 0700 | ICP 1900 | | |
| Ferguson NCC9A T2 C-11 | Soren McCallister | 20 | N | ICP 0700 | ICP 1900 | | |
| Task Force 8 | William Layfield (T) | 1 | | ICP 0700 | ICP 1900 | | |
| IDIFD Eng 3652 T6 E-315 | Brian O'Donnell | 3 | N | ICP 0700 | ICP 1900 | | |
| IDCTF Eng 531 T6 E-316 | Ashley Phelps | 3 | N | ICP 0700 | ICP 1900 | | |
| T&Y WAT3 E-243 | Lee Cahoon | 1 | N | ICP 0700 | ICP 1900 | | |
| | | | | | | | |
| SOF2 | John Strom | 1 | N | ICP 0700 | ICP 1900 | | |
| Medic 3 | Rick Bostain | 1 | N | ICP 0700 | ICP 1900 | | |
| | | | | | | | |
| | | | | | | | |
| | | | | | | | |
| | | | | | | | |
| | | | | | | | |
| | | | | | | | |
| | | | | | | | |
| | | | | | | | |
| 7. Control Operations Ensure perimeter is secure. Assist with burn preparations. | | | | | | | |
| 8. Special Instructions GFC will assume command on escapes / IA outside Perimeter Road. IA Group will report directly to Ops. DIV groups will assist as needed Include snag awareness in all briefings. All firing must be approved & coordinated thru Branch. EG-EJ Coordinate with private landowners prior to plowing timber stands. All GPS Info needs to be collected in DATUM WGS 84 (Degree Decimal Minute | | | | | | | |
| 9. Division/Group Communication Summary | | | | | | | |
| Function | Frequency | System | Channel | Function | Frequency | System | Channel |
| Command | Rx: 164.6250 Tx: 163.1500 Tone 103.5 | | 5 | Air to Ground | 170.000 | King NIFC | 12 |
| Tactical Div/Group | 164.1375 | King NIFC | 8 | Air to Ground | | King NIFC | |
| Prepared by (Resource Unit Leader) /s/ David Berens | | Approved by (Planning Section Chief) /s/ Paul Summerfelt | | Date 05/21/2007 | | Time 2200 | |

| | | | | | | | |
|---|--|--|---------|--|--------------------|-------------------|------------------|
| DIVISION ASSIGNMENT LIST | | 1. Branch 1 Ben Kizer / Duane Tewa (T) | | 2. Division/Group Swamp Park Group | | | |
| 3. Incident Name Big Turnaround Complex – East Zone | | 4. Operational Period Date: 05/22/2007 Time: 1200 - 2400 | | | | | |
| 5. Operations Personnel | | | | | | | |
| Operations Chief | | Heaton /Wilcox (T) Small / Richards (T) | | Division/Group Supervisor | | Steve Hawkins | |
| 6. Resources Assigned this Period | | | | | | | |
| Strike Team/Task Force/ Resource Designator | | Leader | | Number Persons | Trans. Needed | Drop Off PT./Time | Pick Up PT./Time |
| Strike Team 3 | | Chris Lundgren | | 1 | N | ICP 1200 | ICP 2400 |
| Red Rock T6 E-286 | | Shykes | | 2 | N | ICP 1200 | ICP 2400 |
| Red Rock T6 E-287 | | Murphy | | 2 | N | ICP 1200 | ICP 2400 |
| Red Rock T6 E-288 | | Benoy | | 2 | N | ICP 1200 | ICP 2400 |
| Red Rock T6 E-289 | | Stevensen | | 2 | N | ICP 1200 | ICP 2400 |
| | | | | | | | |
| | | | | | | | |
| STDZ | | Terry White | | 1 | N | ICP 1200 | ICP 2400 |
| Orange Springs TPL2 E-173 | | Hugh Matchett | | 1 | N | ICP 1200 | ICP 2400 |
| JBM Const. DOZ2 E-111 | | John McCoy | | 2 | N | ICP 1200 | ICP 2400 |
| WAT3 E-390 | | Robert Field | | 1 | N | ICP 1200 | ICP 2400 |
| Medic 6 | | James Terrill | | 1 | N | ICP 1200 | ICP 2400 |
| | | | | | | | |
| | | | | | | | |
| | | | | | | | |
| | | | | | | | |
| | | | | | | | |
| | | | | | | | |
| 7. Control Operations Patrol Branch 1, mop-up 100 to 200 feet. | | | | | | | |
| 8. Special Instructions GFC will assume command on escapes / IA outside Perimeter Road, DIV groups will assist as needed. Include snag awareness in all briefings. All firing must be approved & coordinated thru Branch. All GPS Info needs to be collected in DATUM WGS 84 (Degree Decimal Minute). | | | | | | | |
| 9. Division/Group Communication Summary | | | | | | | |
| Function | Frequency | System | Channel | Function | Frequency | System | Channel |
| Command | Rx: 164.5750 Tx: 163.1500 Tone 206.5 | King NIFC | 2 | Air to Ground | 170.000 | King NIFC | 12 |
| Tactical Div/Group | 168.6000 | King NIFC | 7 | Air to Ground | | King NIFC | |
| Prepared by (Resource Unit Leader) /s/ David Berens (T) | | Approved by (Planning Section Chief) /s/ Paul Summerfelt | | | Date 05/21/2007 | | Time 2000 |

| | | | | | | | |
|---|--|--|------------------|--|------------------|--------------|---------|
| DIVISION ASSIGNMENT LIST | | 1. Branch 2 Allen Mitchell | | 2. Division/Group Firing Group | | | |
| 3. Incident Name Big Turnaround Complex – East Zone | | 4. Operational Period Date: 05/22/2007 Time: 0700-1900 | | | | | |
| 5. Operations Personnel | | | | | | | |
| Operations Chief | Curtis Heaton/Chris Wilcox(T) Pruett Small/Todd Richards(T) | Division/Group Supervisor | | Jeff Andrews | | | |
| 6. Resources Assigned this Period | | | | | | | |
| Strike Team/Task Force/ Resource Designator | Leader | Number Persons | Trans. Needed | Drop Off PT./Time | Pick Up PT./Time | | |
| Aerial Ignition Spec | Howard McCullough | 1 | N | ICP 0700 | ICP 1900 | | |
| Toledo Firing Boss | Rocky Chesser | 1 | N | ICP 0700 | ICP 1900 | | |
| Cherokee IHC C-5 | Dennis Trentham | 17 | N | ICP 0700 | ICP 1900 | | |
| Homestead Firing Boss E-306.1 | Rob Vernachio | 1 | N | ICP 0700 | ICP 1900 | | |
| Greyback NCC7C T2IA C-14 | Sean Hendrix | 20 | N | ICP 0700 | ICP 1900 | | |
| Marsh Master 1 | | 1 | N | ICP 0700 | ICP 1900 | | |
| Fire Behavior Assessment Team | Mike Campbell | 8 | N | ICP 0700 | ICP 1900 | | |
| | | | | | | | |
| | | | | | | | |
| | | | | | | | |
| | | | | | | | |
| 7. Control Operations Develop ignition RX for burning in DIV G, H, I, and J. Be prepared to initiate firing ops. | | | | | | | |
| 8. Special Instructions GFC will assume command on escapes / IA outside Perimeter Road, IA Group works directly for OPS. DIV groups will assist as needed. Include snag awareness in all briefings. All firing must be approved & coordinated thru Branch. All firing equipment on 30 minute call-out notice. All GPS info needs to be collected in DATUM WGS 84 (Degree Decimal Minute) | | | | | | | |
| 9. Division/Group Communication Summary | | | | | | | |
| Function | Frequency | System | Channel | Function | Frequency | System | Channel |
| Command | Rx: 164.7750 Tx: 163.1500 Tone 123.0 | | 1 | Air to Ground | 170.000 | King NIFC | 12 |
| Tactical Div/Group | 168.0500 | King NIFC | 6 | Air to Ground | | King NIFC | |
| Prepared by (Resource Unit Leader) /s/ David Berens (T) | | Approved by (Planning Section Chief) /s/ Paul Summerfelt | | Date 05/21/2007 | | Time 2200 | |

| | | | | | | | |
|---|--|---|--|---------------------------|---|-------------------|------------------|
| DIVISION ASSIGNMENT LIST | | | 1. Branch | | 2. Division/Group Contingency Group | | |
| 3. Incident Name Big Turnaround Complex – East Zone | | | 4. Operational Period Date: 05/22/2007 Time: 1200 - 2400 | | | | |
| 5. Operations Personnel | | | | | | | |
| Operations Chief | | Heaton /Wilcox (T) Small / Richards (T) | | Division/Group Supervisor | | Ron Bush | |
| 6. Resources Assigned this Period | | | | | | | |
| Strike Team/Task Force/ Resource Designator | | Leader | | Number Persons | Trans. Needed | Drop Off PT./Time | Pick Up PT./Time |
| Task Force 6 | | Jeff Ayers | | 1 | N | ICP 1200 | ICP 2400 |
| Attack One Fire T6 E-19 | | Richard Taylor | | 2 | N | ICP 1200 | ICP 2400 |
| Attack One Fire T6 E-20 | | Hank Knight | | 2 | N | ICP 1200 | ICP 2400 |
| TN CNF 602 T6 E-54 | | Tim Wharton | | 3 | N | ICP 1200 | ICP 2400 |
| NWR Eng. 602 T6 E-324 | | Brad Bailey | | 2 | N | ICP 1200 | ICP 2400 |
| Rock Hill Eng. 5 T4 E-65 | | Brad Peterson | | 3 | N | ICP 1200 | ICP 2400 |
| FCDM Inc. Eng. T6 E-14 | | Dave Hardy | | 2 | N | ICP 1200 | ICP 2400 |
| SRV #12 HC2 C-8 | | Armando Mendoza | | 20 | N | ICP 1200 | ICP 2400 |
| DOZB | | Richard Wallmow | | 1 | N | ICP 1200 | ICP 2400 |
| Abernathy DOZ2 E-110 | | Jimmy Abernathy | | 2 | N | ICP 1200 | ICP 2400 |
| Orange Springs TPL2 E-174 | | Leslie Jeter | | 1 | N | ICP 1200 | ICP 2400 |
| Tipton /Young WAT2 E-148 | | Hunnicuttt | | 1 | N | ICP 1200 | ICP 2400 |
| Medic 5 | | Jeffrey Hay | | 1 | N | ICP 1200 | ICP 2400 |
| SOF2 | | Bernard Clark | | 1 | N | ICP 1200 | ICP 2400 |
| 7. Control Operations Patrol Branches 1 and 2, mop-up 100 to 200 feet. Prepare to support burn out. | | | | | | | |
| 8. Special Instructions GFC will assume command on escapes / IA outside Perimeter Road, DIV groups will assist as needed. Include snag awareness in all briefings. All firing must be approved & coordinated thru Branch. All GPS Info Needs to be collected in DATUM WGS 84 (Degree Decimal Minute). | | | | | | | |
| 9. Division/Group Communication Summary | | | | | | | |
| Function | Frequency | System | Channel | Function | Frequency | System | Channel |
| Command | Rx: 164.5750 Tx: 163.1500 Tone 206.5 | King NIFC | 2 | Air to Ground | 170.000 | King NIFC | 12 |
| Tactical Div/Group | 168.6000 | King NIFC | 7 | Air to Ground | | King NIFC | |
| Prepared by (Resource Unit Leader) /s/ David Berens (T) | | Approved by (Planning Section Chief) /s/ Pete Summerfelt | | | Date 05/21/2007 | | Time 2000 |

| | | | | | | | |
|--|--|--|--|---------------------------|--------------------------------------|--|------------------|
| DIVISION ASSIGNMENT LIST | | | 1. Branch | | 2. Division/Group IA Group | | |
| 3. Incident Name Big Turnaround Complex – East Zone | | | 4. Operational Period Date: 05/22/2007 Time: 0700 - 1900 | | | | |
| 5. Operations Personnel | | | | | | | |
| Operations Chief | | Curtis Heaton/Chris Wilcox(T) Pruett Small/Todd Richards(T) | | Division/Group Supervisor | | Todd Abel Kelvin Thompson (T) | |
| 6. Resources Assigned this Period | | | | | | | |
| Strike Team/Task Force/ Resource Designator | | Leader | | Number Persons | Trans. Needed | Drop Off PT./Time | Pick Up PT./Time |
| OKR 41 T6 E-306 | | William Sikes | | 2 | N | ICP 0700 | ICP 1900 |
| KY-LBF T6 Eng 1 E-59 | | Dirk Wiley | | 3 | N | ICP 0700 | ICP 1900 |
| WOD Eng 192 T6 E-297 | | Sage Decker | | 3 | N | ICP 0700 | ICP 1900 |
| Eng 627 T6 E-317 | | Ralph Murray | | 3 | N | ICP 0700 | ICP 1900 |
| Eagle's Eng. 1 T6 E-321 | | Byron Treas | | 3 | N | ICP 0700 | ICP 1900 |
| OKR-TPL2 53 E-25 | | Cory Bryant | | 1 | N | ICP 0700 | ICP 1900 |
| | | | | | | | |
| | | | | | | | |
| | | | | | | | |
| | | | | | | | |
| | | | | | | | |
| | | | | | | | |
| | | | | | | | |
| | | | | | | | |
| | | | | | | | |
| | | | | | | | |
| 7. Control Operations Be prepared to respond to new starts. Coordinate with Branch Director after 0700 briefing. Assist in re-burn suppression as requested by DIVS. | | | | | | | |
| 8. Special Instructions All Groups: GFC will assume command on escapes/IA outside perimeter Rd DIV Groups will assist as needed. Include snag awareness in all briefings ALL GPS info needs to be collected in DATUM WGS 84 (Degree Decimal Minute). | | | | | | | |
| 9. Division/Group Communication Summary | | | | | | | |
| Function | Frequency | System | Channel | Function | Frequency | System | Channel |
| Command | Rx: 164.7750 Tx: 163.1500 Tone 123.0 | | 1 | Air to Ground | 170.000 | King NIFC | 12 |
| Tactical Div/Group | 168.6000 | King NIFC | 7 | Air to Ground | | King NIFC | |
| Prepared by (Resource Unit Leader) /s/ David Berens (T) | | Approved by (Planning Section Chief) /s/ Paul Summerfelt | | | Date 05/21/2007 | | Time 2200 |

| | | | | | | | | | |
|--|--|--|-----------------------|--|--|----------------------|---|---|--|
| AIR OPERATIONS SUMMARY | | PREPARED BY: Alex Stone | | | PREPARED DATE/TIME: 05/21/2007 1925 | | | | |
| 1. INCIDENT NAME: Big Turnaround Complex | | 2. OPERATIONAL PERIOD: | | | START TIME: | END TIME: | SUNRISE: | SUNSET: | |
| | | 05/22/07 | | | 0900 | 2000 | 0629 0630 | 2020 (Folkston) 2023 (Waycross) | |
| 3. REMARKS (Safety Notes, Hazards, Air Operations Special Equipment, etc.): Be Alert to Media Aircraft Over Fire Be Alert to High Winds and Heavy Smoke Helibases Located At Okefenokee NWR, Waycross, and Davis Helibase (Folkston, Ga.) Aviation Break at Florida Hwy. # 2 Maintain ½ mile initial call up (Lifeflight Helicopter) Located At Jacksonville, Fla. 1-800-223-4878 (Shands Hospital) | | | | | 4. MED EVAC A/C: N17HX | | 5. TFR: 7/1820-Ga Radius: Rectangle Altitude: 3000 MSL NW Corner: Lat: 31-09-00 N Long: 82-38-50 W SE Corner: Lat: 30-15-00 N Long: 82-02-27 W | | |
| 6. PERSONNEL | | Phone | 7. FREQUENCIES | AM | FM | 8. FIXED-WING | | # Avail / Type/ Make-Model / FAA N# / Base(s) | |
| AOBD: Alex Stone | | Primary 520-991-7871 | AIR/AIR FW: | 122.575 East 123.1250 West 122.925 State | | Air Tankers | | 2 Av. I P2V T-09 - T-10 T-06 LCQ 2 Av. I P-3 T-21 -T-22 LCQ | |
| ATGS: Larry Mars 90K Sweat Farm Rd. Ed Encinas 3UV Dan Eckstein 0EB ATGS (T) Owen Martin | | 479-857-9663 520-954-2358 928-595-1479 | AIR/AIR RW: | 122.575 East 123.1250 West 122.925 State | | Lead Planes | | 1 Av. Lead 47 LCQ 1 Av. 81Z (ASM) B88 LCQ 1 Av. 30W (ASM) B2 OCF | |
| HLCO: | | | AIR/GROUND: | | 170.000 East 167.950 West | Base FAX #: | | | |
| ASGS: Bob Skeen | | 505-660-4521 | COMMAND: | | | ATGS Aircraft | | (1) 90K -----Beech Baron (2) 3UV----- Aero Commander (3) 0EB----- Kingair (4) AH-1-----Cobra FLIR | |
| HEBM: Zoni Anzalone (Pogo) HEBM Dave Langley (Waycross) HEBM: Mike Summerfield (Davis) | | 505-240-3649 | COMMAND RPT | Rx: | Tx: | Other: | | (1) Flight Following With Pogo Helibase or Waycross Helibase (2) Initial Attack Aircraft For State Cessna 182's and CH-47 and UH-60's (3) Initial Attack For Okefenokee is N5738Y (Okee 6) APPROVED HELISPOTS: Refer to Okefenokee NWR Dipsite Map | |
| Helibase Phones: Pogo Davis Waycross | | 912-496-4415 912-496-3765 912-218-8937 | DECK FREQ: | 168-350 | | TOLC FREQ: | | | |
| | | | | | | | | | |
| | | | | | | | | | |

9. AIRCRAFT ASSIGNED (Use Additional Sheets As Necessary)

| FAA N# | TY | MAKE/MODEL | BASE | AVAIL | START | REMARKS | FAA N# | TY | MAKE/MODEL | BASE | AVAIL | START | REMARKS |
|-----------------|-----|---------------------------|----------|-------|-------|---|---------|----|----------------|----------|-------|-------|--|
| N5BH | I | Sikorsky S-70 | Davis | 0900 | 0930 | Unavailable | 3UV | | Aero Commander | Waycross | 0900 | 0930 | Aerial Supervision |
| N4503E (HT-763) | I | Sikorsky S-61 | Davis | 0900 | 0930 | Bucket Drops | 0EB | | Kingair | Waycross | 0900 | 0930 | Aerial Supervision |
| N526MW | I | Kaman | Davis | 0900 | 0930 | Bucket Drops | 90K | | Beech Baron | Waycross | 0900 | 0930 | Aerial Supervision Sweat Farm Rd. |
| N161KA | I | Kaman | Davis | 0900 | 0930 | Bucket Drops | Various | | Cessna 182's | Waycross | 0900 | 0930 | Aerial Detection and Supervision For State |
| N/A | I | UH -60 Georgia NG | Waycross | 0900 | 0930 | Bucket Drops Initial Attack For State | | | | | | | |
| N/A | I | UH -60 Georgia NG | Waycross | 0900 | 0930 | Bucket Drops Initial Attack For State | | | | | | | |
| N15HX | II | Bell 205++ | Pogo | 0830 | 0900 | Bucket Drops (Limited Category) | | | | | | | |
| N17HX | II | Bell 205++ | Pogo | 0830 | 0900 | Bucket Drops | | | | | | | |
| N5738Y Okee 6 | III | Bell 206 | Pogo | 0830 | 0900 | Recon / Admin PSD Operations | | | | | | | |
| N12HX | III | Bell 407 | Pogo | 0830 | 0900 | Recon / Admin Bucket Drops as Needed | | | | | | | |
| Chopper 7 | III | Bell 407 Georgia Forestry | Waycross | 0900 | 0930 | Recon / Admin For State Bucket Drops as Needed | | | | | | | |

10. TASK/MISSION/ASSIGNMENT (Type/Function includes: Air Tactical, Retardant, Recon, Personnel Transport, Water Dropping, S&R, etc.)

| TYPE/FUNCTION | NAME OF PERSONNEL OR CARGO (if applicable) OR INSTRUCTIONS FOR TACTICAL AIRCRAFT | MISSION START | FLY FROM | FLY TO |
|----------------------------|--|---------------|------------------|------------------------|
| Type II Helicopter | Bucket Support For Line Personnel, Logistical Support | 0900 | Helibase | Fire and return |
| Type III Helicopter | Bucket Support / GIS Mapping / Recons as requested | 0900 | Helibase | Fire and return |
| Type I Helicopter | Bucket Support for Line Personnel, Initial Attack and Burn out Operations. | 0930 | Helibase | Fire and return |
| Air Attack Platforms | Aerial Supervision | 0930 | Waycross Airport | Fire and return |
| State Detection Fixed Wing | Aerial Detection and Initial Attack For New Fires | 0930 | Waycross Airport | Fire Patrol and Return |

APPROVED BY: /s/ Alex Stone

DATE/TIME: 05-21-2007 / 1925

SAFETY MESSAGE

INCIDENT: BIG TURNAROUND COMPLEX

DATE: May 22, 2007

TIME: Day 0700-1900 and Swing 1200-2400

Major Hazards and Risks:

DRIVING – Almost 50 percent of fire fighter injuries and deaths occur due to driving accidents. This is due to driving too fast for the conditions, not wearing the seat belt, and being distracted while driving. All of these causes of vehicle accidents are easy to prevent. Slow down, lights on, consider the seat belt as part of your PPE, and focus on your driving.

INTERESTING STUFF - Tests have shown that drivers – limited to 35 miles per hour - who are eating, talking on cell phones, and looking at papers while they drive are much more likely to lose control of their vehicle – not too surprising - but tests also show that drivers –limited to 35 miles per hour- with both hands on the wheel and trying to solve math problems verbally are just as likely to lose control of their vehicle.

THE CONCLUSION – You have very little time to react when you are traveling 49 feet per second (35 miles per hour). When an animal or another vehicle appears in front of you, or you drift off the road way or across the center line because you are distracted – bad things happen. All of these causes of accidents are much less likely if you are focused solely on your driving because you need that precious reaction time to prevent bad things from happening to you – especially when the other guy is distracted.

REMEMBER THE BASICS – THEY CAN SAVE YOUR LIFE

- 10 Standard Fire Orders
- 18 Situations That Shout Watch Out
- L.C.E.S. = Lookouts, Communications, Escape Routes, Safety Zones
- Look Up, Look Down, and Look Around

YOU ARE RESPONSIBLE FOR YOUR PERSONAL SAFETY

| INCIDENT RADIO COMMUNICATIONS PLAN | | BIG TURNAROUND COMPLEX-EAST ZONE | DATE/TIME PREPARED 5/21/2007 1800 | | OPERATIONAL PERIOD DATE 5/22/07 TIME 0700-2400 | | |
|------------------------------------|---------------------------------|--|---|----------------|--|----------------|--|
| CH No. | CH NAME | ASSIGNMENT | RX FREQ WIDE NARROW | RX TONE NAC | TX FREQ WIDE NARROW | TX TONE NAC | MODE DIGITAL D ANALOG A MULTI M |
| 1 | OKE South Eddy Lookout | Command (primary to Bugaboo) | 164.7750 N | | 163.1500 N | 123.0 | A |
| 2 | OKE North Waycross | Command Repeater (linked to 5 & 13) | 164.5750 N | | 163.1500 N | 206.5 | A |
| 3 | GA Mutual Aid | Structural Groups to Local Engines | 154.2800 W | | 154.2800 W | | A |
| 4 | 911 & Structural | Emergency Traffic | 154.4450 W | 118.8 | 154.0100 W | 118.8 | A |
| 5 | OKE East OKR | Command Repeater (linked to 2 & 13) | 164.6250 N | | 163.1500 N | 103.5 | A |
| 6 | TAC 6 | Firing Group | 168.0500 N | | 168.0500 N | | A |
| 7 | TAC 7 | Swing, IA, Structural, Contingency, & Swamp Park Groups | 168.6000 N | | 168.6000 N | | A |
| 8 | TAC 8 | Div. A/B, Div. J/K/L/M, Div. F | 164.1375 N | | 164.1375 N | | A |
| 9 | TAC 9 | Div. C/D/E | 168.7750 N | | 168.7750 N | | A |
| 10 | TAC 10 | Common frequency with Blue Team & TFS Team for coordination (Ch 10 on the TXS & GA forestry plans/Ch 5 on the Blue Team plan) | 169.9000 N | | 169.9000 N | | A |
| 11 | TAC 11 | Div. G/H/I | 168.2000 N | | 168.2000 N | | A |
| 12 | Air-to-Ground | Big Turnaround Air | 170.0000 N | | 170.0000 N | | A |
| 13 | OKE West Stephen Foster St Park | Command Repeater (linked to 2 & 5) | 167.1250 N | | 163.1500 N | 156.7 | A |
| 14 | Air Guard | Emergency contact & redirect with incident aircraft | 168.6250 N | | 168.6250 N | 110.9 | A |
| 15 | unassigned | unassigned | | | | | A |
| 16 | Air Guard | Emergency contact & redirect with incident aircraft | 168.6250 N | | 168.6250 N | 110.9 | A |

Prepared by: Windy Berghofer, COML

REMARKS

Channel 2, 5, & 13 are linked together. If you talk on the closest one to you, it will come out on the other two.

| | | | | |
|--------------------------------|---|------------------------------------|---------------------------------|--|
| ICS-206 MEDICAL PLAN | 1. Incident Name Big Turnaround Complex | 2. Date Prepared 5/21/07 | 3. Time Prepared 1800 | 4. Operational Period DAY/SWING SHIFTS 5/22/07 |
|--------------------------------|---|------------------------------------|---------------------------------|--|

5. Incident Medical Aid Station

| Medical Aid Stations | Location | EMT-P | No |
|---|---|--------------|----------|
| Medical Unit Big Turnaround 904-955-0022 | 100 yards west of ICP in the double wide trailer | X | |
| Medic 1 Frank Abel | Div A/B 0700-1900 | X | |
| Medic 2 Steve Spangler | Div G/I 0700-1900 | EMT-I | |
| Medic 3 Rick Bostian | Div J/M 0700-1900 | X | |
| Medic 4 Tyler Taapkan | Div C/E 1200-2400 | | X |
| Medic 5 Jeffery Hay | Contingency Group 1200-2400 | X | |
| Medic 6 James Terrell | Swamp Park Group 1200-2400 | X | |
| Medic 7 Shane Powers | Div F 1200-2400 | X | |

6. Transportation

A. Ambulance Services

| Name | Address | Phone | Paramedics | |
|---|--|---------------------|------------|----|
| | | | Yes | No |
| Ware County EMS | Waycross Georgia (911) | 912-287-4335 | X | |
| Charlton Memorial EMS | 1203 N Third St Folkston Ga (911) | 912-496-2531 | X | |
| TraumaOne(Air Ambulance Service) | Jacksonville (911) | 800-223-4878 | X | |

7. Hospitals

| Name | Address | Travel Time | | Phone | Helipad | | Burn Center | |
|--|--|-------------------|--------------------|---|-----------|----|-------------|----------|
| | | Air | Grnd | | Yes | No | Yes | No |
| Charlton Memorial | 1203 N 3rd St Folkston N30°50.80 W82°00.10 | 10 min | 20 min. | 912-496-2531 | X | | | X |
| Satilla Regional (Northside of swamp) | 410 Darling Ave Waycross Ga N31°13.56 W82°21.058 | 15 min | 30 min | 912-283-3030 | X | | | X |
| Shands Hospital (Jax) | Jacksonville, FL | 30 min | 1.5 hrs | 904-244-0411 | X | | | X |
| Shands Hospital Level 1 trauma center | Gainesville Fl N29°38.33 W082°20.73 OPS – 123.02 | 45 min | 1.5 hrs | 352-265-0200 352-265-0222 904-244-0411 | X* | | X | |

8. Medical Emergency Procedures

Medical emergencies will be reported to the Division Supervisor. The Division Supervisor will assume command and call for the closest line medic, and resources in the division that are EMT qualified. The Division Supervisor will notify communications by radio or cell phone. (Big Turnaround ICP 912-496-2111)
 Communications to notify MEDL @ 904-955-0022 and dial 911 for ambulance.

The report should include type of illness/injury and exact location of the incident. Communications will clear the air for emergency traffic only and will request key personnel to report to communications. If an air medical helicopter is used within the fire perimeter, communications should notify the air operations director and helibase.

| | |
|--|---|
| 9. Prepared by (Medical Unit Leader) Jesus Hernandez | 10. Reviewed by (Safety Officer) Bruce Malloy |
|--|---|

INCIDENT EMERGENCY PLAN (IEP)

The goal of this Incident Emergency Plan (IEP) is to provide the guidelines necessary to Locate, Triage, Extricate, Treat and Transport accident Patients. The Division/Group Supervisor will initially oversee the emergency. Radio communication will be on the "Command Frequency". Names of injured or deceased individuals should not be given over the radio. Deceased individuals and their equipment are not to be moved, except to accomplish rescue work or to protect the health and safety of others. It is expected this organization will come from resources assigned within the Division or nearest adjoining forces.

DIVISION/GROUP SUPERVISOR

- Conduct Size-up of the Incident (Nature of Accident, Number/Type of Resources, Location)
- Coordinate "Line EMT" response to the accident (Utilize Closest EMT's).
- Begin "TRIAGE"
- Determine and initiate treatment and transportation needs
- Evaluate special needs (Law Enforcement, Heavy Rescue, Haz Mat)
- Coordinate with Air Attack for Air-Medical transportation needs
- Preserve the scene for accident investigation

MEDICAL GROUP SUPERVISOR (This position will be filled, only if needed)

- Supervise TRIAGE, Treatment and Transportation Unit Leaders.
- Place orders through Communications for ground ambulance, medical personnel, as needed
- Ensure proper security and traffic control.

TRIAGE UNIT LEADER (This position will be filled, only if needed)

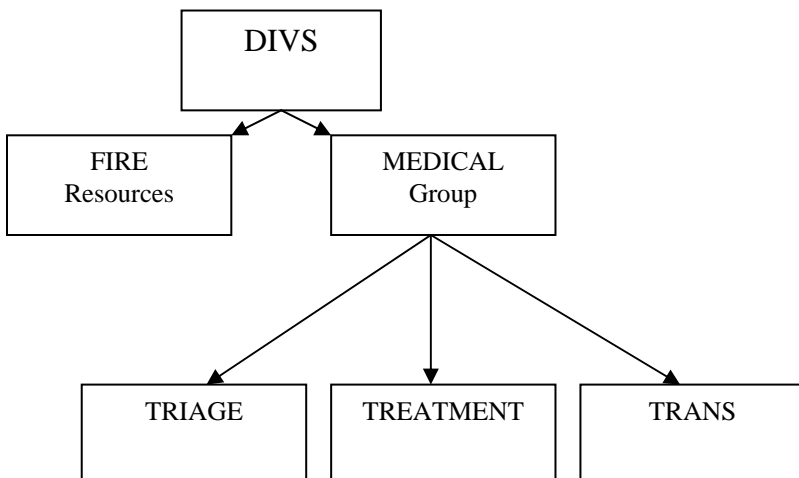
- Locate and TRIAGE all patients and relays information to Medical Group Supervisor.
- Ensure that Airway, Breathing and Circulation stabilization of patients is addressed during TRIAGE.
- Coordinate with Treatment Unit Leader for patient stabilization, extrication, and movement to treatment area.
- Utilize the "START" TRIAGE system.

TREATMENT UNIT LEADER (This position will be filled, only if needed)

- Establishes Immediate, Delayed and Minor treatment areas.
- Direct treatment and stabilization of Patients.
- Prioritize Patients for transport.
- Request medical personnel and supplies, as needed.
- Ensure continual TRIAGE of patients in treatment area.
- Coordinate with TRIAGE Unit leader for delivery of patients to the treatment area.
- Coordinate with the Transportation Unit Leader for delivery of patients to ambulances.
- Ensure documentation of patient conditions and treatments on TRIAGE tags.

TRANSPORTATION UNIT LEADER (This position will be filled, only if needed)

- Coordinate all patient transportation to medical facilities, air and ground.
- Establish communication with hospitals receiving patients.
- Coordinate with Treatment Unit Leader to determine number and category of patients.
- Designate ambulance/helicopter loading areas.
- Determine mode (air/ground) of patient transportation.
- Ensure patients information and destination is recorded.



- MINOR: Walking Wounded
- DELAYED: CAN Follow Simple Commands
- IMMEDIATE: Respirations have been restored
Respirations above 30
Radial Pulse Absent
Capillary Refill > 2 seconds
CAN NOT Follow Simple Command
- FATALITY: No Respirations after head tilt

Human Resource Message

“Accept the things we cannot change,
And change the things we can...”

There are a lot of things that we cannot change, but one thing we all have influence over is our *attitude*. As you are interacting with others throughout the day, remember, of all the things you wear, your expression is the most important.

Is something upsetting you?

Talk with your supervisor and/or see the Human Resource Specialist-- normally, we can work out what is bothering you.

Let us work together to resolve issues so that we all can stay focused and have a good assignment.

Keep a positive attitude and have a great day!

Gary Samaha, HRSP
404-357-1516

Sharon Crittendon, HRSP (T)
404-661-7422

RESTAURANTS

| | | SUN | MON-THURS | FRI-SAT |
|------------------|------------------------------|------------------|------------------|------------------|
| KINGSLAND | APPLEBEE'S | 1100-2000 | 1100-2300 | 1100-0100 |
| | CRACKER BARREL | 0600-2000 | 0600-2000 | 0600-2300 |
| | RUBY TUESDAY'S | 1100-1100 | 1100-1100 | 1100-1200 |
| | SHONEY'S | | | |
| | SONNY'S | 1100-2100 | 1100-2100 | 1100-2130 |
| | WAFFLE HOUSE | 24 HRS | | |
| FOLKSTON | MICHAEL'S DELI | 0630-2100 | 0630-2100 | 0630-2000 |
| | OKEFENOKEE RESTAURANT | CLOSED | 0630-2100 | 0630-2100 |

SIGN IN PROCEDURE

Meals may not exceed per diem rates of B-\$7, L-\$11, D-\$18.

Ticket or sign-in sheet – name, resource #(C, E, or O), fire name. Crew boss may provide manifest for names. All names of crew must be recorded for meals consumed. If recording on ticket, use front where possible.

Use govt. travel card if you have one.

Govt. will not pay for alcohol, movies or phones.

If you are on per diem, deduct any meals you sign for, or which are provided by the govt., from your travel.

The McDonalds in Folkston is offering a firefighter discount.

BIG TURNAROUND COMPLEX – EAST ZONE

| | |
|----------------|--------------|
| Communications | 912-496-2111 |
| Medical | 912-496-4359 |
| Ordering | 912-496-4369 |
| Ordering | 912-496-4710 |
| Demob | 912-496-4173 |
| Finance | 912-496-4177 |
| Finance | 912-496-4102 |
| Finance Fax | 912-496-7536 |
| Operations | 912-496-4132 |
| FBAN | 912-496-4175 |
| Information | 912-496-4176 |
| Ground Support | 912-496-4368 |
| Pogo HB | 912-496-4415 |
| Davis HB | 912-496 3765 |

| | |
|----------------------|--------------|
| Chad Cullum TFLD | 605-673-1828 |
| David Reid STEN | 303-887-3829 |
| Craig Dougherty DIVS | 505-756-4406 |
| Rick Young DIVS | 707-845-4316 |
| Ron Bush DIVS | 276-219-7750 |
| Steve Hawkins DIVS | 541-519-4898 |
| Kato Ichiyasu DIVS | 303-589-3433 |
| Charlie Burns DIVS | 253-740-7452 |

UPCOMING OVERHEAD DEMOB

| LAST SHIFT | NAME | TVL | JET PORT | REQ# | JOB | DEMOB CITY | DEMOB ST |
|------------|------|-----|-------------|------|-----|------------|-------------|
|------------|------|-----|-------------|------|-----|------------|-------------|

LAST SHIFT MONDAY, TRAVEL TUESDAY

| | | | | | | | |
|------------|-------------------|-----|-----|-------|------|-------------|----|
| 05/21/2007 | MC CURRY, DAVID | AOV | | O-235 | STPS | ALABASTER | AL |
| 05/21/2007 | WOODWARD, BRYAN L | | CHS | O-227 | SEC1 | SUMMERVILLE | SC |

LAST SHIFT TUESDAY, TRAVEL WEDNESDAY

| | | | | | | | |
|------------|--------------------|-----|-----|-------|------|---------------|----|
| 05/22/2007 | BUMGARNER, STEVE | AIR | ELP | O-275 | DIVS | LAS CRUCES | NM |
| 05/22/2007 | CULLUM, CHAD C | A/R | RAP | O-232 | TFLD | RAPID CITY | SD |
| 05/22/2007 | EPPERSON, BEN | AIR | LIT | O-79 | DRIV | KIRBY | AR |
| 05/22/2007 | HAY, JEFFERY | POV | BHM | O-241 | EMTP | CANTON | AL |
| 05/22/2007 | HOLTON, MARY | AIR | CAE | O-360 | EQTR | COLUMBIA | SC |
| 05/22/2007 | MARTIN, OWEN | AOV | | O-262 | ATGS | WIGGINS | MS |
| 05/22/2007 | MCCLANAHAN, EDWARD | A/R | LWS | O-148 | DOZB | GRANGEVILLE | ID |
| 05/22/2007 | POWELL, JASON | AIR | LIT | O-78 | DZOP | BLACK SPRINGS | AR |
| 05/22/2007 | ROOSE, PAUL | AOV | | O-423 | DOZB | NEW ELLENTON | SC |
| 05/22/2007 | SATHER, JOEL | AIR | MSO | O-230 | FOBS | NOXON | MT |
| 05/22/2007 | SCHMECHEL, JOHN | AIR | SMF | O-157 | DOZB | SONORA | CA |
| 05/22/2007 | SHIELDS, MARLENE | AIR | PRC | O-165 | GISS | PRESCOTT | AZ |
| 05/22/2007 | SIMMONS, MICHAEL L | AIR | RNO | O-229 | FOBS | GARDNERVILLE | NV |
| 05/22/2007 | TERRELL, JAMES | POV | BHM | O-214 | EMTP | ALABASTER | AL |
| 05/22/2007 | THOMPSON, KELVIN | A/R | LWS | O-158 | DOZB | GRANGEVILLE | ID |
| 05/22/2007 | WARDEN, JOSH | AIR | LWS | O-147 | DOZB | GRANGEVILLE | ID |
| 05/22/2007 | WHITE, WALTER | POV | | O-205 | IADP | OCALA | FL |

LAST SHIFT WEDNESDAY, TRAVEL THURSDAY

| | | | | | | | |
|------------|-----------------------|-----|-----|-------|------|-------------|----|
| 05/23/2007 | BOSTIAN, RICK | A/R | XNA | O-240 | EMTP | LOWELL | AR |
| 05/23/2007 | BUCHANAN, JAMES (BUCK | AIR | JAN | O-2 | IRIN | JACKSON | MS |
| 05/23/2007 | CRAIG, SHAUN | | SMF | O-244 | STEN | SONORA | CA |
| 05/23/2007 | DISSEL, BRUCE | A/R | GJT | O-183 | HELM | MOAB | UT |
| 05/23/2007 | GOOCH, JORDAN | POV | | O-304 | DRIV | FOLKSTON | GA |
| 05/23/2007 | JONES, MICHAEL | AIR | PDT | O-259 | STDZ | PENDLETON | OR |
| 05/23/2007 | JUEDE, JUSTIN | AIR | RDD | O-298 | TFLD | REDDING | CA |
| 05/23/2007 | LAYFIELD, WILLIAM | AOV | | O-289 | TFLD | TALLADEGA | AL |
| 05/23/2007 | LESTER, HARRY | AIR | IDA | O-267 | SOF2 | IDAHO FALLS | ID |
| 05/23/2007 | LUNDGREN, CHRIS | AIR | LWS | O-245 | STEN | LEWISTON | ID |
| 05/23/2007 | MORGAN, MITCHEL | A/R | DRT | O-216 | DOCL | DEL RIO | TX |
| 05/23/2007 | OWNBEY, JASON | A/R | RDD | O-292 | TFLD | REDDING | CA |
| 05/23/2007 | SPANGLER, JOHN | POV | | O-52 | EMTP | ROANOKE | VA |
| 05/23/2007 | WELCH, STACEY A | AOV | | O-226 | SEC1 | TOWNSEND | GA |
| 05/23/2007 | WHITE, TERRY | AIR | LWS | O-255 | STDZ | LEWISTON | ID |

LAST SHIFT THURSDAY, TRAVEL FRIDAY

| | | | | | | | |
|------------|---------------------|-----|-----|-------|------|---------------|----|
| 05/24/2007 | ABEL, TODD | AIR | PHX | O-281 | DOZB | PRESCOTT | AZ |
| 05/24/2007 | AYERS, JEFF | AIR | CEC | O-291 | TFLD | EUREKA-ARCATA | CA |
| 05/24/2007 | CLARK, BERNARD O | AIR | PDX | O-266 | SOF2 | PORTLAND | OR |
| 05/24/2007 | CLOPTON, SHERRY | AIR | TYS | O-286 | EDSD | KNOXVILLE | TN |
| 05/24/2007 | DAUGHERTY, CRAIG | AIR | ABQ | O-290 | TFLD | ALBUQUEQRE | NM |
| 05/24/2007 | HAWKINS, STEVE B | AIR | BOI | O-279 | DIVS | BAKER CITY | OR |
| 05/24/2007 | KIZER, BENJAMIN O | AIR | PDX | O-293 | OSC2 | WESTPORT | WA |
| 05/24/2007 | NEAL, HERSHAL A | AIR | TYS | O-300 | HECM | WHITLEY | KY |
| 05/24/2007 | RABE, COLIN A | A/R | PDX | O-285 | DOZB | SALEM | OR |
| 05/24/2007 | RANNE, DONALD L | AIR | PSC | O-271 | SOF2 | PENDLETON | OR |
| 05/24/2007 | SANDOW, PATRICIA M. | | | O-318 | CASC | HOBOKEN | GA |
| 05/24/2007 | SCHWECKE, DIETRICH | AIR | GTF | O-269 | SOF2 | GREAT FALLS | MT |
| 05/24/2007 | WILLY, EDWARD D | AIR | LMT | O-280 | DOZB | KLAMATH CITY | OR |
| 05/24/2007 | YOUNG, RICK L | AIR | CEC | O-277 | DIVS | CRESENT CITY | CA |

LAST SHIFT FRIDAY, TRAVEL SATURDAY

| | | | | | | | |
|------------|----------------------|-----|-----|-------|------|-------------|----|
| 05/25/2007 | BALLARD, JAMES | AOV | SHV | O-301 | HECM | NACOGDOCHES | TX |
| 05/25/2007 | DAGNAN, DON | A/R | PHL | O-308 | HELM | PHILADELPHA | PA |
| 05/25/2007 | ERRINGER, ANTHONY | AIR | ABQ | O-121 | RADO | ALBUQUERQUE | NM |
| 05/25/2007 | KELLEY, WANDA | REN | CHA | O-287 | EDSD | CLEVELAND | TN |
| 05/25/2007 | LAURIE, GREG | A/R | DEN | O-299 | HELM | DENVER | CO |
| 05/25/2007 | STEVENSON, CHRIS | AOV | | O-305 | FOBS | MC COOL | MS |
| 05/25/2007 | STROM, JOHN M | AOV | FSM | O-248 | DIVS | BOONESVILLE | AR |
| 05/25/2007 | SUMMERFIELD, MICHAEL | AIR | BOI | O-320 | HEB2 | MC CALL | ID |
| 05/25/2007 | URE, HOWARD | A/R | IAH | O-312 | INCM | ETILE | TX |

LAST SHIFT SATURDAY, TRAVEL SUNDAY

| | | | | | | | |
|------------|----------------|-----|-----|-------|------|--------|----|
| 05/26/2007 | BUSH, RONALD | A/R | TRI | O-337 | DIVS | WISE | VA |
| 05/26/2007 | SLATE, STEVE M | A/R | FAT | O-302 | HELM | FRESNO | CA |

IF YOU ARE PLANNING TO TRAVEL HOME BY AIR PLEASE SEE DEMOB TO CONFIRM YOUR FLIGHT INFO AT LEAST 36 HOURS PRIOR TO TRAVEL!!

EQUIPMENT DEMOB SCHEDULE

| LAST SHIFT | EQUIPMENT NAME | TVL | AGCY | REQ# | DEMOB CITY | DEMOB ST |
|------------|----------------|-----|------|------|------------|----------|
|------------|----------------|-----|------|------|------------|----------|

LAST SHIFT MONDAY, TRAVEL TUESDAY

| | | | | | | |
|------------|-----------------|-------|-----|------|---------------|----|
| 05/21/2007 | MNGPA ENGINE T6 | E-145 | BIA | ENG6 | GRAND PORTAGE | MN |
| 05/21/2007 | WOMBLE DOZER | E-67 | FS | DOZ2 | HOT SPRINGS | AR |

LAST SHIFT TUESDAY, TRAVEL WEDNESDAY

| | | | | | | |
|------------|----------------------|-------|-----|------|-------------|----|
| 05/22/2007 | KY-LBF E-1 | E-59 | FS | ENG6 | CADIZ | KY |
| 05/22/2007 | TN CNF 602 | E-54 | FS | ENG6 | UNICOI | TN |
| 05/22/2007 | ENGINE WIND CAVE 628 | E-295 | NPS | ENG6 | HOT SPRINGS | SD |

LAST SHIFT WEDNESDAY, TRAVEL THURSDAY

| | | | | | | |
|------------|-----------------------------|-------|------|---------|-----------|----|
| 05/23/2007 | ENGINE-MISS. SAND CRANE-324 | FWS | ENG6 | GAUTIER | MS | |
| 05/23/2007 | ENGINE EVERGLADES 606 | E-299 | NPS | ENG6 | HOMESTEAD | FL |
| 05/23/2007 | ENGINE-SAM HOUSTON-41 | E-290 | FS | ENG5 | LUFKIN | TX |

LAST SHIFT THURSDAY, TRAVEL FRIDAY

| | | | | | | |
|------------|-----------------------|-------|-----|------|--------------|----|
| 05/24/2007 | ENGINE - RAWLINGS 393 | E-298 | BLM | ENG6 | RAWLINGS | WY |
| 05/24/2007 | ENGINE PIKE961 | E-319 | FS | ENG6 | WOOLAND PARK | CO |
| 05/24/2007 | ENGINE RGD ENGINE 651 | E-320 | BLM | ENG6 | CANON CITY | CO |

LAST SHIFT FRIDAY, TRAVEL SATURDAY

| | | | | | | |
|------------|--------------------------|-------|-----|------|--------|----|
| 05/25/2007 | NATCHEZ TRACE ENGINE | E-107 | NPS | ENG6 | TUPELO | MS |
| 05/25/2007 | ENGINE - T6 - WOD - #192 | E-297 | BLM | ENG6 | CODY | WY |

LAST SHIFT SATURDAY, TRAVEL SUNDAY

| | | | | | | |
|------------|----------------------------|-------|-----|------|-------------|----|
| 05/26/2007 | ENGINE - T6 - IDIFD - 3652 | E-315 | BLM | ENG6 | POCATELLO | ID |
| 05/26/2007 | ENGINE - T6 - IDCTF - 531 | E-316 | FS | ENG6 | MOUNT PILER | ID |