

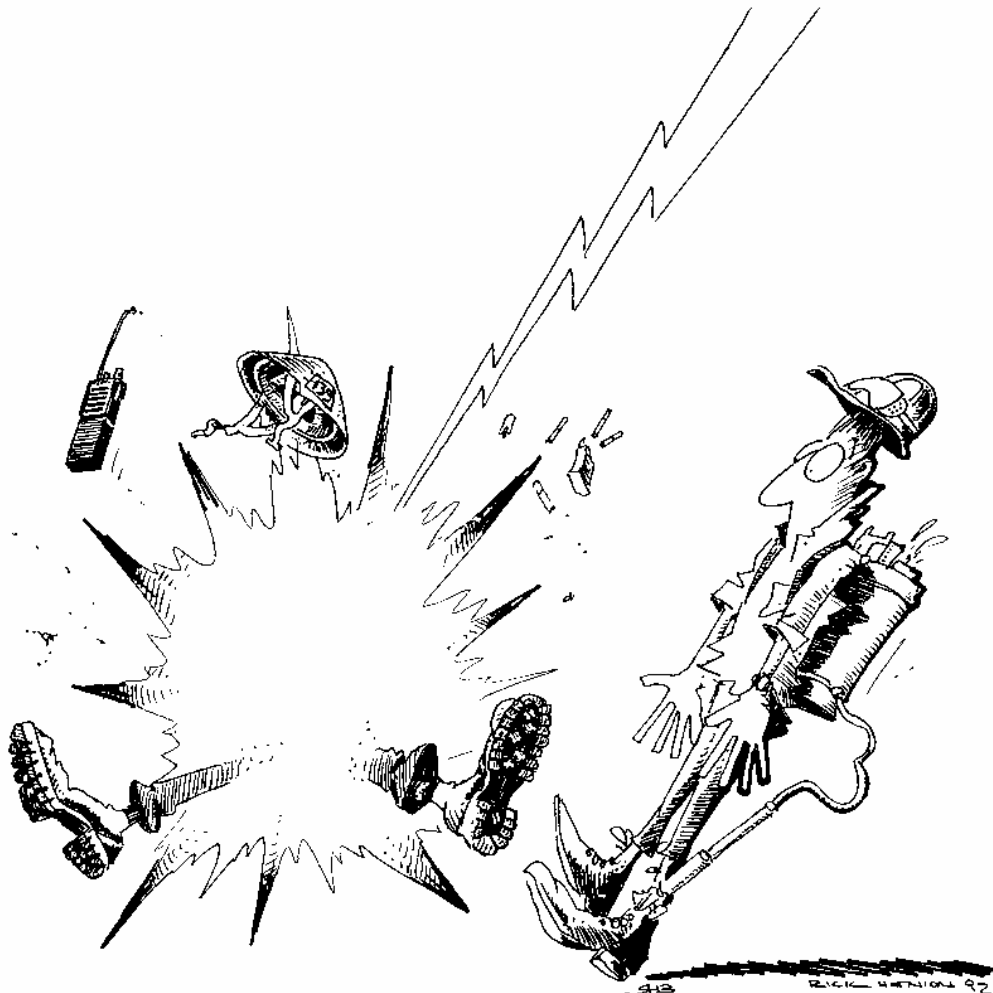
# BIG TURNAROUND COMPLEX

## EAST ZONE

### INCIDENT ACTION PLAN

May 29, 2007

0700 - 2400



4. UNFAMILIAR WITH WEATHER AND LOCAL FACTORS INFLUENCING FIRE BEHAVIOR

<b>INCIDENT OBJECTIVES</b>	1 INCIDENT NAME  <b>Big Turnaround Complex - East Zone</b>	2. DATE PREPARED  <b>05/28/2007</b>	3. TIME PREPARED  <b>2200</b>									
4. OPERATIONAL PERIOD (DATE/TIME)  <b>May 29, 2007      0700 - 2400      OPERATIONAL PERIOD</b>												
5. GENERAL CONTROL OBJECTIVES FOR THE INCIDENT (INCLUDE ALTERNATIVES) <ol style="list-style-type: none"> <li>1. <b>Ensure firefighter and public safety through adherence to all safety standards, maintaining situational awareness and appropriate implementation of evacuations, closures, and temporary flight restrictions.</b></li> <li>2. <b>Protect / minimize threats / loss to private investments; key cultural features as listed in the Delegation of Authority; and protect the integrity of the Okefenokee Wilderness.</b></li> <li>3. <b>Manage the fires within the swamp under a containment strategy in accordance with suppression actions outlined in the WFSA. In the East Zone, contain the fire West of the Swamp Perimeter Road in Charlton County; South and west of Hwy. 1 and the CSX Railroad line; and within the Swamp Road.</b></li> <li>4. <b>Manage the East Zone cost effectively and in an efficient manner to contain the fire by June 17, 2007 at a cost below \$20,200,000.</b></li> </ol>												
6. WEATHER FORCAST FOR OPERATIONAL PERIOD  <b>See attached Weather and Fire Behavior Forecast for detailed information.</b>												
7. GENERAL/SAFETY MESSAGE  <b>A. There are 6-35 trains/day on the CSX tracks in Branch I: there are few automatic railroad crossing warning devices:. stop before crossing the tracks and verify it is safe before crossing the tracks.</b> <b>B. GFC will assume command on any escapes /IA outside Perimeter Road; assist as needed.</b> <b>C. Include snag awareness in all briefings.</b> <b>D. SOF's and FOB's to notify DIVS as they enter/leave divisions.</b>												
<table border="0"> <tr> <td><input checked="" type="checkbox"/> ORGANIZATION LIST (ICS 203)</td> <td><input checked="" type="checkbox"/> MEDICAL PLAN (ICS 206)</td> <td><input checked="" type="checkbox"/> SAFETY MESSAGE</td> </tr> <tr> <td><input checked="" type="checkbox"/> ASSIGNMENT LIST (ICS 204)</td> <td><input checked="" type="checkbox"/> AIR OPS. SUMMARY (ICS 220)</td> <td><input checked="" type="checkbox"/> FIRE WEATHER FORECAST</td> </tr> <tr> <td><input checked="" type="checkbox"/> COMMUNICATION PLAN (ICS 205)</td> <td><input checked="" type="checkbox"/> INCIDENT EMERGENCY PLAN</td> <td><input checked="" type="checkbox"/> FIRE BEHAVIOR FORECAST</td> </tr> </table>				<input checked="" type="checkbox"/> ORGANIZATION LIST (ICS 203)	<input checked="" type="checkbox"/> MEDICAL PLAN (ICS 206)	<input checked="" type="checkbox"/> SAFETY MESSAGE	<input checked="" type="checkbox"/> ASSIGNMENT LIST (ICS 204)	<input checked="" type="checkbox"/> AIR OPS. SUMMARY (ICS 220)	<input checked="" type="checkbox"/> FIRE WEATHER FORECAST	<input checked="" type="checkbox"/> COMMUNICATION PLAN (ICS 205)	<input checked="" type="checkbox"/> INCIDENT EMERGENCY PLAN	<input checked="" type="checkbox"/> FIRE BEHAVIOR FORECAST
<input checked="" type="checkbox"/> ORGANIZATION LIST (ICS 203)	<input checked="" type="checkbox"/> MEDICAL PLAN (ICS 206)	<input checked="" type="checkbox"/> SAFETY MESSAGE										
<input checked="" type="checkbox"/> ASSIGNMENT LIST (ICS 204)	<input checked="" type="checkbox"/> AIR OPS. SUMMARY (ICS 220)	<input checked="" type="checkbox"/> FIRE WEATHER FORECAST										
<input checked="" type="checkbox"/> COMMUNICATION PLAN (ICS 205)	<input checked="" type="checkbox"/> INCIDENT EMERGENCY PLAN	<input checked="" type="checkbox"/> FIRE BEHAVIOR FORECAST										
ICS 202	9. PREPARED BY (PLANNING SECTION CHIEF)  <b>Paul Summerfelt</b>	10. APPROVED BY (INCIDENT COMMANDER)  <b>Dan Oltrogge</b>										

**\*\* Southwest Area IMT \*\***

ORGANIZATION ASSIGNMENT LIST		9. Operations Section		
1. Incident Name <b>BIG TURNAROUND COMPLEX – EAST ZONE</b>		Chief	Curtis Heaton / Todd Richards (T) 0700 - 1900	
2. Date 05/28/2007		3. Time 2200		
4. Operational Period May 29, 2007                      0700 - 2400				
Position	Name			
5. Incident Commander and Staff		a. Branch I – Division/Group		
Incident Commander	Dan Oltrogge/Pruett Small (T)	BRANCH DIRECTOR	Bill Bryant – Day Chris Wilcox - Night	
Safety Officer	Bruce Malloy / Dave Wolf	Division/Group	A - B	Rick Young Jim Bowling
Information Officer	Cathy Schmidlin/ Ron De Hart	Division/Group	C-F	Michael Carlson
Liaison Officer	Sam Whitted	Division/Group	Swamp Group	Duane Tewa
6. Agency Representative		b. Branch II – Divisions/Groups		
Agency	Name	BRANCH DIRECTOR	Allen Mitchell/Carl Schwope (T)Day Chris Wilcox - Night	
FWS	Howard McCullough	Division/Group	G	Todd Abel Chris Marks (T)
FWS	Russ Langsford	Division/Group	H-I	LanceElmore
GFC	Eric Harris	Division/Group	J-M	Matt Hoehna
Charlton Co. EM	Sgt. Joey Chancy	Division/Group	Firing Group	Jeff Andrews
GEMA/Charlton Co.	Gary Rice	Division/Group	Holding Group	Charley Burns
GEMA/Ware Co.	Vicki Thompson	Division/Group		
7. Planning Section		d. Groups		
Chief	Paul Summerfelt	Division/Group	Contingency	Jayson Coil
Resources Unit	Glenda Womack Gary Esposito (T)	Division/Group		
Situation Unit	Dave Dobbs	e. Air Operations Branch		
Documentation Unit	Dana Bagnoli	Air Operations Branch Director	Alex Stone	
FBAN	Stewart Turner	Air Attack Supervisor	Dan Eckstein / Ed Encinas	
GIS	Rick Crawford	Air Support Group Supervisor	Bob Skeen	
IMET	Phil Manuel	Helibase Manager	Zoni Anzalone	
Demobilization Unit	Paul Kaiser			
Computer Specialist	Frank Webster	10. Finance Section		
8. Logistics Section		Chief	Darla Jo Quick	
Chief	Ed Freed	Time Unit	Lisa Angle	
Supply Unit	Marcus Medina	Procurement Unit	Rosalind Sorrell	
Facilities Unit	Jack Whetstone	Compensation/Claims Unit	Gerri Talgo	
Ground Support Unit	Stan Jones	Cost Unit	Roxane Raley	
Communications Unit	Carl Berghofer/Jim Rallis (T)	Prepared by (Resource Unit Leader)		
Medical Unit	Nate Becker	Glenda Womack		
Security Manager	Walter Sellers			
Food Unit	Sharon Taube			

## Fire Weather Forecast

**FORECAST NO:** 25

**NAME OF FIRE:** Big Turnaround Complex

**PREDICTION FOR:** Day and Swing Shift

**UNIT:** Okefenokee Wildlife Refuge

**SHIFT DATE:** Tuesday 05/29/07

**SIGNED:** Phil Manuel

**TIME AND DATE** 1900

**Incident Meteorologist**

**FORECAST ISSUED:** 05/28/2007

---

### WEATHER DISCUSSION:

On shore winds off the Atlantic Ocean will continue today. A large area of high pressure covers the southeastern United States. Clockwise flow around the high is resulting in the persistent easterly winds.

The main concern: **Low RH and Moderate wind gusts between 1300 and 1900.**

---

### WEATHER FORECAST TUESDAY:

**WEATHER:** Partly cloudy.

**MAX TEMPERATURES:** Around 87. (24 hour trend = Up 2)

**MIN HUMIDITY:** 35 to 40 percent (24 hour trend = down 5)

**20 FT WINDS:** Northeast 1 to 3 mph before 1000...becoming east and increasing to 5 to 10 mph by noon with gusts to 15 mph during the afternoon.

**STABILITY/INVERSION:** Mixing heights around 6000 ft in the afternoon.

Dispersion Index 65. Haines Index 4.

**TRANSPORT WINDS:** East 18 mph.

---

### WEATHER FORECAST TUESDAY NIGHT:

**WEATHER:** Mostly clear.

**MIN TEMPERATURES:** Low around 58. (24 hour trend = unchanged)

**MAX HUMIDITY:** Recovery...80 to 100 percent.

**20 FT WINDS:** Southeast 5 to 10 mph during the evening (1800 - 2200 EDT)...becoming light and variable after 2200 (10 PM).

**STABILITY/INVERSION:** Inversion to 400 feet. Dispersion Index 4.

---

**OUTLOOK FOR WEDNESDAY:** Partly cloudy. Northeast 1 to 3 mph in the morning...becoming east 5 to 10 mph with gusts to 15 mph in the afternoon. High around 89. Minimum humidity 30 to 35 percent.

---

**SUNRISE/SUNSET:** Tuesday May 29th...0626/2023

---

### EXTENDED...

High pressure will remain centered along the Carolina Coast. This will result in mainly dry conditions with an east or southeast wind. Little or no precipitation is anticipated through the end of the week. The sea breeze may bring enough moisture inland for a few showers, but the coverage is not expected to be widespread.

	Thursday	Friday	Saturday	Sunday
<b>Low</b>	60	60	62	64
<b>High</b>	88	88	88	88
<b>Min RH</b>	32 to 38	32 to 38	38 to 44	38 to 44
<b>Wind</b>	SE 4 to 8	SE 4 to 8	SE 3 to 6	VRBL 2 to 5
<b>Weather</b>	Pt. Cldy	Pt. Cldy	Pt. Cldy	Pt. Cldy
<b>POP</b>	10	10	20	20

## Fire Behavior Forecast

<b><u>Forecast No. 40</u></b>	<b><u>Prediction for Day Shift</u></b>
<b><u>Name of Fire: Big Turnaround Complex</u></b>	<b><u>Shift Date: May 29, 2007</u></b>
<b><u>Time and Date Forecast Issued</u></b> <b><u>1800 hrs 5/28/2007</u></b>	<b><u>Signed : Stewart Turner</u></b> <b><u>Fire Behavior Analyst</u></b>

### **Weather Summary (See Detailed Weather Forecast in the IAP):**

Partly cloudy with temperatures reaching the high 80's. Minimum relative humidity will range from 35-40%. East winds will range from 5-10 mph sustained in the afternoon. A Haines index of 4 and a dispersion index of 65 are forecast.

**General Fire Behavior:** Sunshine has been the driving factor for fire behavior for the last few days. When the sun is heating the fuels fire behavior greatly increases when the fuels are shaded the fire behavior decreases. When the clouds dissipate around 1600 fire behavior will increase. Moderate fire behavior after the morning inversion breaks around 0930. Fire behavior will increase to active by 1100 and very active during the peak hours 1600 through 2000 hrs. Anticipate and plan for very active to extreme fire behavior with any head fire. During peak hours swamp shrub and swamp bay fuels will burn intensely on the surface producing 8 to 15 foot lengths and spread rates of 10 to 12 feet/minute. Brisk east winds will facilitate torching and short range spotting out to 100 yards. The swamp fuels will produce moderate backing spread rates of 2-4 feet/minute. During peak burning hours, pine fuels will spread at 60-80 feet/minute with very high intensities in the palmetto/gallberry rough (15-30 ft flame lengths). Single tree and group torching in open canopy pine can produce spotting out to 300 yards. Young, closed canopy pine plantations (5-10yrs) have the potential to support sustained crown fire. Probability of ignition will be 70% during the peak burning period without any shading.

### **Specific Fire Behavior:**

**Branch I:** Interior smoke is common throughout this Branch. Needle cast and reburn cause problems within the pine plantations. Many of these areas want to rekindle making short runs, further damaging the timber. Flame lengths of 2-4 feet are common. Low to moderate intensity burnout along portions of the swamp edge break from DIV F to the branch break has created a high potential for reburn.

**Branch II:** The main fire continues to back to the southeast with 4-10 flame lengths during the peak of the day. Unchecked this fire will reach the swamp perimeter in 3-4 days. The area south of Chesser Island continues to move north, some areas are holding in the prairie; however these will be out flanked with time. The fire edge will continue to back to the East in DIV H-J. Backing spread during peak hours in the swamp shrub will range from 2-4 feet/minute moving near 1/3-1/2 mile per day. DIV K will continue to have reburn potential in the needle cast.

**Air Operations:** Inversions will persist until 0900. No restrictions to air operations due to smoke or winds

**Safety:** A major danger in the southeast is underestimating fuel volatility. Most grasses and brush appear so green that they will not burn. These fuels can have high rates of spread and burn with a flashy nature. Don't underestimate these fuels.

<b>DIVISION ASSIGNMENT LIST</b>			1. Branch 1 <b>Bill Bryant-Day</b> <b>Chris Wilcox-Night</b>		2. Division/Group <b>A-B</b>		
3. Incident Name Big Turnaround Complex – East Zone			4. Operational Period Date: 05/29/2007		Time: 0700 - 1900		
5. Operations Personnel							
Operations Chief		<b>Curtis Heaton</b> <b>Todd Richards(T)</b>		Division/Group Supervisor		<b>Rick Young</b> <b>Jim Bowling</b>	
6. Resources Assigned this Period							
Strike Team/Task Force/ Resource Designator		Leader		Number Persons	Trans. Needed	Drop Off PT./Time	Pick Up PT./Time
<b>Task Force 4</b>		<b>Mike Smith</b> <b>Reggie Forcine(T)</b>		2	N	ICP 0700	ICP 1900
Greyback NCR5A C-13		Matt Elliot		20	N	ICP 0700	ICP 1900
Pat Rick T2 IA C-10		James Braham		20	N	ICP 0700	ICP 1900
NFC #2 T6 E-235		Earl Wooten		2	N	ICP 0700	ICP 1900
Rocky Mtn. T6 E-429		Jesse Zerfoss		3	N	ICP 0700	ICP 1900
Fire Trax 3 10-WY T6 E-431		Alan Marble		3	N	ICP 0700	ICP 1900
<b>Task Force 1</b>		<b>Brian Hicks</b>		1	N	ICP 0700	ICP 1900
National Fire T6 E-531		Rito Niklaus		1	N	ICP 0700	ICP 1900
WAT1 T&Y E-500		Andrews		1	N	ICP 0700	ICP 1900
Ferguson 9CC C-11		Soren McCallister		20	N	ICP 0700	ICP 1900
WAT2 Timberline E-522		Barney Ray McGovern		1	N	ICP 0700	ICP 1900
<b>Strike Team 3</b>		<b>Todd Welker</b>		1	N	ICP 0700	ICP 1900
OH-OIC Eng T6 E-533		William Williams		3	N	ICP 0700	ICP 1900
White Earth T6 E-534		Londo Corvin		3	N	ICP 0700	ICP 1900
Rocky MT Fire T6 E-438		Courtney Wenzel		3	N	ICP 0700	ICP 1900
SOF2		Louie Casaus		1	N	ICP 0700	ICP 1900
Medic 1		Danni Koile/Bob Wheaton		1	N	ICP 0700	ICP 1900
7. Control Operations Patrol and mop-up 100-200 feet. Continue to suppress re-burn pockets. Task Force 4 and Strike Team 3 to secure accessible area in and around Swamp Park area.							
8. Special Instructions Be prepared to assist GFC with I/A as requested. Logging operations support will be coordinated through Incident Communications to provide IA support for Divisions A-F. DIV A- stop at all railroad crossings.							
9. Division/Group Communication Summary							
Function	Frequency	System	Channel	Function	Frequency	System	Channel
Command	Rx: 164.5750 Tx: 163.1500 Tone 206.5	King NIFC	9	Air to Ground	170.0000	King NIFC	13
Tactical Div/Group	168.6000	King NIFC	3	Air to Ground		King NIFC	
Prepared by (Resource Unit Leader) /s/ Gary Esposito (T)		Approved by (Planning Section Chief) /s/ Paul Summerfelt		Date 05/28/2007		Time 2200	

<b>DIVISION ASSIGNMENT LIST</b>		1. Branch 1 <b>Bill Bryant-Day</b> <b>Chris Wilcox-Night</b>		2. Division/Group <b>C-F</b>			
3. Incident Name Big Turnaround Complex – East Zone		4. Operational Period Date: 05/29/2007 Time: 0700 - 1900					
5. Operations Personnel							
Operations Chief <b>Curtis Heaton</b> <b>Todd Richards(T)</b>		Division/Group Supervisor <b>Michael Carlson</b>					
6. Resources Assigned this Period							
Strike Team/Task Force/ Resource Designator	Leader	Number Persons	Trans. Needed	Drop Off PT./Time	Pick Up PT./Time		
<b>Strike Team 5</b>	<b>David Reid/Chris Jessop (T)</b>	2	N	ICP 0700	ICP 1900		
West Metro T6 E-432	Mark Corbett	3	N	ICP 0700	ICP 1900		
Colorado WFS T6 E-434	Scott Attaberry	3	N	ICP 0700	ICP 1900		
Eng 4632 T6 E-435	Scott Logan	3	N	ICP 0700	ICP 1900		
Engine 204 T6 E-436	Matt Dayer	3	N	ICP 0700	ICP 1900		
SHF-611 T6 E-437	Kory Bowser	3	N	ICP 0700	ICP 1900		
<b>Task Force 3</b>	<b>Jerry Fullerton/Lance Robinson (T)</b>	2	N	ICP 0700	ICP 1900		
SRV 14 T2 C-7	Rodolfo Cervantes	20	N	ICP 0700	ICP 1900		
Showlow Brush 344 T6 E-237	Jamey Barth	3	N	ICP 0700	ICP 1900		
OKR 41 T6 E-306	Kirk Naegele	2	N	ICP 0700	ICP 1900		
RA-Cour 4633 T6 E-430	Jerry Fullerton	3	N	ICP 0700	ICP 1900		
Sunfire #1 T6 E-433	Dennis McMillian	3	N	ICP 0700	ICP 1900		
<b>Task Force 12</b>	<b>Eric Meekins</b> <b>Reggie Forcine (T)</b>	2					
JBM DO22 E-111	John McCoy	1	N	ICP 0700	ICP 1900		
T&Y Road Grader E-221	Steve Carrol	1	N	ICP 0700	ICP 1900		
Road Grader E-506	Shaun Strickland	1	N	ICP 0700	ICP 1900		
WAT2 T&Y E-524	Jason Gregory	1	N	ICP 0700	ICP 1900		
WAT1 T&Y E-525	Ted Tipton	1	N	ICP 0700	ICP 1900		
<b>Task Force 14</b>	<b>Robert Johnson</b>	1	N	ICP 0700	ICP 1900		
Timmermann E1 T6 E-537	John Timmermann	1	N	ICP 0700	ICP 1900		
Bayou #1 E-536	Heath Thomas	1	N	ICP 0700	ICP 1900		
Eagle's Eng. 1 T6 E-321	Bryon Treas	3	N	ICP 0700	ICP 1900		
Excavator B&E E-507	Bobby Strickland	1	N	ICP 0700	ICP 1900		
Excavator B&E E-508	Joshua Strickland	1	N	ICP 0700	ICP 1900		
Excavator E-259	Craig Crawford	1	N	ICP 0700	ICP 1900		
Medic 8	Tammy Nelson	1	N	ICP 0700	ICP 1900		
7. Control Operations Identify road repair and begin working from E/F break. Continue to patrol and mop up Div C –F. Continue to suppress re-burn.							
8. Special Instructions Logging operations support will be coordinated through Incident communications to provide IA support for Divisions C-F. DIV C- stop at all railroad crossings.							
9. Division/Group Communication Summary							
Function	Frequency	System	Channel	Function	Frequency	System	Channel
Command	Rx: 164.6250 Tx: 163.1500 Tone 103.5	King NIFC	11	Air to Ground	170.0000	King NIFC	13
Tactical Div/Group	168.6000	King NIFC	3	Air to Ground		King NIFC	
Prepared by (Resource Unit Leader) /s/ Gary Esposito (T)		Approved by (Planning Section Chief) /s/ Paul Summerfelt		Date 05/28/2007		Time 2200	

<b>DIVISION ASSIGNMENT LIST</b>		1. Branch 1 <b>Bill Bryant-Day</b> <b>Chris Wilcox-Night</b>		2. Division/Group <b>Swamp Group</b>			
3. Incident Name Big Turnaround Complex – East Zone		4. Operational Period Date: 05/29/2007 Time: 1200 - 2400					
5. Operations Personnel							
Operations Chief		<b>Curtis Heaton</b> <b>Todd Richards (T)</b>		Division/Group Supervisor		<b>Duane Tewa</b>	
6. Resources Assigned this Period							
Strike Team/Task Force/ Resource Designator		Leader		Number Persons	Trans. Needed	Drop Off PT./Time	Pick Up PT./Time
<b>Task Force 10</b>		<b>Steve Biggs</b>		1	N	ICP 1200	ICP 2400
Red Rock T6 E-286		Steve Shykes		2	N	ICP 1200	ICP 2400
Red Rock T6 E-287		Murphy		2	N	ICP 1200	ICP 2400
Red Rock T6 E-288		Benoy		2	N	ICP 1200	ICP 2400
Red Rock T6 E-289		Stevensen		2	N	ICP 1200	ICP 2400
Orange Springs TPL2 E-173		Hugh Matchett		1	N	ICP 1200	ICP 2400
WAT3 E-390		Robert Field		1	N	ICP 1200	ICP 2400
DOZB		Terrance Gallegos		1	N	ICP 1200	ICP 2400
Medic 6		Randy Chevalier		1	N	ICP 1200	ICP 2400
7. Control Operations Assist Branch 1&2 as needed. Patrol & mop-up 30'in. Support Branch 2 with burn-out & holding operations in Division G/Chesser Island.							
8. Special Instructions Work with night operations to develop contingency firing plan. Logging operation support will be coordinated through incident communication to provide suppression support for Division A-F.							
9. Division/Group Communication Summary							
Function	Frequency	System	Channel	Function	Frequency	System	Channel
Command	Rx: 164.5750 Tx: 163.1500 Tone 206.5	King NIFC	9	Air to Ground	170.0000	King NIFC	13
Tactical Div/Group	168.0500	King NIFC	1	Air to Ground		King NIFC	
Prepared by (Resource Unit Leader) /s/ Gary Esposito(T)		Approved by (Planning Section Chief) /s/ Paul Summerfelt			Date 05/28/2007		Time 2130



<b>DIVISION ASSIGNMENT LIST</b>		1. Branch 2 <b>Allen Mitchell/Carl Schwope (T)</b> <b>Chris Wilcox-Night</b>		2. Division/Group <b>G</b>			
3. Incident Name Big Turnaround Complex – East Zone		4. Operational Period Date: 05/29/2007 1900 Time: 0700 -					
5. Operations Personnel							
Operations Chief <b>Curtis Heaton</b> <b>Todd Richards(T)</b>		Division/Group Supervisor <b>Todd Abel</b> <b>Chris Marks (T)</b>					
6. Resources Assigned this Period							
Strike Team/Task Force/ Resource Designator	Leader	Number Persons	Trans. Needed	Drop Off PT./Time	Pick Up PT./Time		
<b>Task Force 11</b>	<b>Chet Dieringer</b> <b>Sean Daugherty (T)</b>	2	N	ICP 0700	ICP 1900		
Pro Temps Inc #2 T6 E-142	George Rogers	2	N	ICP 0700	ICP 1900		
TX Fire Eng 151 T6 E-239	Chris Balough	2	N	ICP 0700	ICP 1900		
Pro Temp Inc #3 T5 E-144	David Jones	3	N	ICP 0700	ICP 1900		
WAT3 E-243	Lee Calhoun	1	N	ICP 0700	ICP 1900		
<b>Strike Team 4</b>	<b>Meg Wallmow</b>	1	N	<b>ICP 0700</b>	<b>ICP 1900</b>		
DOZB	Albert Huggins	1	N	<b>ICP 0700</b>	<b>ICP 1900</b>		
SFS DOZ1 E-264	Chris Steedley	1	N	ICP 0700	ICP 1900		
Savannah River TPL#3 T2 E-169	Thomas Wilson	2	N	ICP 0700	ICP 1900		
MS-MNF TPL E-8	Henry Redmond	2	N	ICP 0700	ICP 1900		
SFS DOZ1 E-272	John Mack	1	N	ICP 0700	ICP 1900		
<b>Task Force 2</b>	<b>Aubrey Aday/Frank Auza(T)</b>	2	N	ICP 0700	ICP 1900		
Rawlins Eng 393 T6 E-543	Adam George	3	N	ICP 0700	ICP 1900		
Smokey Mtn WAT2 E-526	Maron Bargeron	1	N	ICP 0700	ICP 1900		
T&Y WAT1 E-499	Anthony Blake	1	N	ICP 0700	ICP 1900		
BLM Eng 612 T6 E-119	Arcenio Solano	3	N	ICP 0700	ICP 1900		
Red Rock Eng 5 T4 E-564	Brian Hodges	3	N	ICP 0700	ICP 1900		
McClain WAT2 E-521	Ernest Taylor	1	N	ICP 0700	ICP 1900		
Godzilla (OKR Resource)		3	N	ICP 0700	ICP 1900		
Medic 2	Israel Estares / Jori Miller	2	N	<b>ICP 0700</b>	<b>ICP 1900</b>		
7. Control Operations Utilize firing group to burn-out Wildlife Drive as necessary. Hold and mop-up 30'. Provide structure protection for Chesser. Keep burn-out in check at SW Chesser.							
8. Special Instructions Branch 2 firing operations on Chesser Island will be coordinated by Branch 2. Divisions G,H,I and Firing Group to be briefed by Branch prior to burn-out operations.							
9. Division/Group Communication Summary							
Function	Frequency	System	Channel	Function	Frequency	System	Channel
Command	Rx: 164.7750 Tx: 163.1500 Tone 123.0	King NIFC	12	Air to Ground	170.0000	King NIFC	13
Tactical Div/Group	168.600	King NIFC	3	Air to Ground		King NIFC	
Prepared by (Resource Unit Leader) /s/ Gary Esposito (T)		Approved by (Planning Section Chief) /s/ Paul Summerfelt		Date 05/28/2007		Time 2200	

<b>DIVISION ASSIGNMENT LIST</b>		1. Branch 2 <b>Allen Mitchell/Carl Schwope (T)</b> <b>Chris Wilcox-Night</b>		2. Division/Group <b>H-I</b>			
3. Incident Name Big Turnaround Complex – East Zone		4. Operational Period Date: 05/29/2007 Time: 0700 - 1900					
5. Operations Personnel							
Operations Chief	<b>Curtis Heaton</b> <b>Todd Richards(T)</b>	Division/Group Supervisor	<b>Lance Elmore</b>				
6. Resources Assigned this Period							
Strike Team/Task Force/ Resource Designator	Leader	Number Persons	Trans. Needed	Drop Off PT./Time	Pick Up PT./Time		
<b>Strike Team 6</b>	<b>Trey Glineski</b>	1	N	ICP 0700	ICP 1900		
TPLU E-154	Tommy Carter	1	N	ICP 0700	ICP 1900		
TPLU E-155	Mike Moore	1	N	ICP 0700	ICP 1900		
DOZB	Aaron Grey	1	N	ICP 0700	ICP 1900		
SFS Inc DOZ2 E-378	James Clark	1	N	ICP 0700	ICP 1900		
SFS Inc DOZ2 E-273	Brad Lyons	1	N	ICP 0700	ICP 1900		
<b>Strike Team 2</b>	<b>Jeff Dion/Kirk Jess (T)</b>	2	N	ICP 0700	ICP 1900		
Pike 961 T6 E-319	Jason Chappell	3	N	ICP 0700	ICP 1900		
RGD Eng T6 E-320	Jon Brewer	3	N	ICP 0700	ICP 1900		
Engine 9503 T6 E-535	Greg Painter	3	N	ICP 0700	ICP 1900		
Wildland Fire Service T6 E-24	Paul Catlett	2	N	ICP 0700	ICP 1900		
<b>Task Force 9</b>	<b>Craig Martin/ Leon Ben (T)</b>	2	N	ICP 0700	ICP 1900		
Everglades 606 T6 E-299	John Stebner	3	N	ICP 0700	ICP 1900		
Cheoah 2-1 T6 E-532	Randall Sellers	2	N	ICP 0700	ICP 1900		
T&Y WAT1 E-241	Tim Wood	1	N	ICP 0700	ICP 1900		
Ferguson NCC 9B C-12	Tim Sickles	20	N	ICP 0700	ICP 1900		
Medic 7	Shane Powers	1	N	ICP 0700	ICP 1900		
7. Control Operations Utilize Firing Group to burn-out swamp edge break. Hold & mop up 30'.							
8. Special Instructions Branch 2 firing operations on Chesser Island will be coordinated by Branch 2. Divisions G,H,I and Firing Group to be briefed by Branch prior to burn-out operations.							
9. Division/Group Communication Summary							
Function	Frequency	System	Channel	Function	Frequency	System	Channel
Command	Rx: 164.7750 Tx: 163.1500 Tone 123.0	King NIFC	12	Air to Ground	170.0000	King NIFC	13
Tactical Div/Group	168.6000	King NIFC	3	Air to Ground		King NIFC	
Prepared by (Resource Unit Leader) /s/ Gary Esposito (T)		Approved by (Planning Section Chief) /s/ Paul Summerfelt		Date 05/28/2007		Time 2200	

<b>DIVISION ASSIGNMENT LIST</b>		1. Branch 2 <b>Allen Mitchell/Carl Schwope (T)</b> <b>Chris Wilcox-Night</b>		2. Division/Group <b>J-M</b>			
3. Incident Name <b>Big Turnaround Complex – East Zone</b>		4. Operational Period Date: 05/29/2007 Time: 0700 - 1900					
5. <b>Operations Personnel</b>							
Operations Chief	<b>Curtis Heaton</b> <b>Todd Richards(T)</b>		Division/Group Supervisor	<b>Matt Hoehna</b>			
6. <b>Resources Assigned this Period</b>							
Strike Team/Task Force/ Resource Designator	Leader	Number Persons	Trans. Needed	Drop Off PT./Time	Pick Up PT./Time		
<b>Task Force 8</b>	<b>Chris Stevenson</b>	1	N	ICP 0700	ICP 1900		
IDIFD Eng 3652 T6 E-315	Tom Wilson	3	N	ICP 0700	ICP 1900		
IDCTF Eng 531 T6 E-316	Brian Nate	3	N	ICP 0700	ICP 1900		
SOF2	William Miller	1	N	ICP 0700	ICP 1900		
SOF2(T)	Scott Wuebber	1	N	ICP 0700	ICP 1900		
Medic 3	Larry Nunez	1	N	ICP 0700	ICP 1900		
7. Control Operations Maintain fire breaks. Mop-up and patrol. Support burn-out operations.							
8. Special Instructions Branch 2 firing operations on Chesser Island will be coordinated by Branch 2. Divisions G,H,I and Firing Group to be briefed by Branch prior to burn-out operations.							
9. <b>Division/Group Communication Summary</b>							
Function	Frequency	System	Channel	Function	Frequency	System	Channel
Command	Rx: 164.6250 Tx: 163.1500 Tone 103.5	King NIFC	11	Air to Ground	170.0000	King NIFC	13
Tactical Div/Group	168.6000	King NIFC	3	Air to Ground		King NIFC	
Prepared by (Resource Unit Leader) /s/ Gary Esposito (T)		Approved by (Planning Section Chief) /s/ Paul Summerfelt		Date 05/28/2007		Time 2200	

<b>DIVISION ASSIGNMENT LIST</b>		1. Branch 2 <b>Allen Mitchell/Carl Schwope (T)</b> <b>Chris Wilcox-Night</b>		2. Division/Group <b>Firing Group</b>			
3. Incident Name Big Turnaround Complex – East Zone		4. Operational Period Date: 05/29/2007                      Time: 0700-1900					
5. Operations Personnel							
Operations Chief <b>Curtis Heaton</b> <b>Todd Richards(T)</b>		Division/Group Supervisor <b>Jeff Andrews</b>					
6. Resources Assigned this Period							
Strike Team/Task Force/ Resource Designator	Leader	Number Persons	Trans. Needed	Drop Off PT./Time	Pick Up PT./Time		
<b>Aerial Ignition Spec</b>	<b>Howard McCullough</b>	1	N	<b>ICP 0700</b>	<b>ICP 1900</b>		
<b>Toledo Firing Boss</b>	<b>Rocky Chesser</b>	1	N	<b>ICP 0700</b>	<b>ICP 1900</b>		
<b>Homestead Firing Boss E-306.1</b>	<b>Rob Vernachio</b>	1	N	<b>ICP 0700</b>	<b>ICP 1900</b>		
<b>Greyback NCC7C T2IA C-14</b>	<b>Sean Hendrix</b>	20	N	<b>ICP 0700</b>	<b>ICP 1900</b>		
<b>Marsh Master 1/Ranger</b>	<b>Chris Wright</b>	2	N	<b>ICP 0700</b>	<b>ICP 1900</b>		
<b>Fire Behavior Assessment Team</b>	<b>Sam Marouk</b>	2	N	<b>ICP 0700</b>	<b>ICP 1900</b>		
<b>FOBS</b>	<b>Linda Wadleigh</b> <b>Shawn Nagle (T)</b>	2	N	<b>ICP 0700</b>	<b>ICP 1900</b>		
7. Control Operations Continue burn-out operations on Chesser Island & Divisions G,H &I. Continue firing operations as directed by Division Supervisor.							
8. Special Instructions Branch 2 firing operations on Chesser Island will be coordinated by Branch 2. Divisions G,H,I and Firing Group to be briefed by Branch prior to burn-out operations.							
9. Division/Group Communication Summary							
Function	Frequency	System	Channel	Function	Frequency	System	Channel
Command	Rx: 164.6250 Tx: 163.1500 Tone 103.5	King NIFC	11	Air to Ground	170.0000	King NIFC	13
Tactical Div/Group	168.2000	King NIFC	2	Air to Ground		King NIFC	
Prepared by (Resource Unit Leader) /s/ Gary Esposito (T)		Approved by (Planning Section Chief) /s/ Paul Summerfelt		Date 05/28/2007		Time 2200	

<b>DIVISION ASSIGNMENT LIST</b>			1. Branch 2 <b>Allen Mitchell/Carl Schwope (T)</b> <b>Chris Wilcox-Night</b>		2. Division/Group <b>Holding Group</b>		
3. Incident Name Big Turnaround Complex – East Zone			4. Operational Period Date: 05/29/2007 Time: 1200 - 2400				
5. Operations Personnel							
Operations Chief		<b>Curtis Heaton</b> <b>Todd Richards(T)</b>		Division/Group Supervisor		<b>Charley Burns</b>	
6. Resources Assigned this Period							
Strike Team/Task Force/ Resource Designator		Leader		Number Persons	Trans. Needed	Drop Off PT./Time	Pick Up PT./Time
<b>Strike Team 1</b>		<b>Rodney Smartlowit</b> <b>Brian Sumpter (T)</b>		2	N	ICP 1200	ICP 2400
Langley Eng T6 E-17		Shawn Langley		2	N	ICP 1200	ICP 2400
Cranes Wildfire T6 E-18		Don Crane		2	N	ICP 1200	ICP 2400
Smokey Mt Eng 1. T6 E-53		James Myers		2	N	ICP 1200	ICP 2400
Wildland Fire Service T6 E-23		Trixie Smith		2	N	ICP 1200	ICP 2400
<b>Task Force 5</b>		<b>Tom McKibben</b>		1	N	ICP 1200	ICP 2400
Eng 2132 T3 E-64		Jeff Dunlap		3	N	ICP 1200	ICP 2400
Wildland Fire Service T3 E-75		Jack Plaster		2	N	ICP 1200	ICP 2400
Wildland Fire Service T6 E-21		Taft Haddon		2	N	ICP 1200	ICP 2400
Wildland Fire Service T6 E-22		Gary Parker		2	N	ICP 1200	ICP 2400
NATR Eng 40 T6 E-107		Robert Vick		3	N	ICP 1200	ICP 2400
Tipton & Young WT2 E-16		Mark Hudgins		1	N	ICP 1200	ICP 2400
<b>Strike Team 7</b>		<b>Ron Jablonski</b>		1	N	ICP 1200	ICP 2400
Tipton & Young JD750 E-11		Jimmy Zimmerman		1	N	ICP 1200	ICP 2400
Tipton & Young JD750 E-9		Billy Chapman		1	N	ICP 1200	ICP 2400
DOZB		Buzz Williams		1	N	ICP 1200	ICP 2400
Medic 4		Dave Luna		2	N	ICP 1200	ICP 2400
7. Control Operations Continue to patrol & mop-up 30'. Be prepared to assist firing group and continue burnout ops.							
8. Special Instructions Branch 2 firing operations on Chesser Island will be coordinated by Branch 2. Divisions G,H,I and Firing Group to be briefed by Branch prior to burn-out operations.							
9. Division/Group Communication Summary							
Function	Frequency	System	Channel	Function	Frequency	System	Channel
Command	Rx: 164.5750 Tx: 163.1500 Tone 206.5	King NIFC	9	Air to Ground	170.0000	King NIFC	13
Tactical Div/Group	168.0500	King NIFC	1	Air to Ground		King NIFC	
Prepared by (Resource Unit Leader) /s/ Gary Esposito (T)		Approved by (Planning Section Chief) /s/ Paul Summerfelt			Date 05/28/2007		Time 2130

<b>DIVISION ASSIGNMENT LIST</b>		1. Branch/Night <b>Chris Wilcox</b>		2. Division/Group <b>Contingency Group</b>			
3. Incident Name Big Turnaround Complex – East Zone		4. Operational Period Date: 05/29/2007 Time: 1200 - 2400					
5. Operations Personnel							
Operations Chief	<b>Curtis Heaton</b> <b>Todd Richards(T)</b>	Division/Group Supervisor		<b>Jayson Coil</b>			
6. Resources Assigned this Period							
Strike Team/Task Force/ Resource Designator	Leader	Number Persons	Trans. Needed	Drop Off PT./Time	Pick Up PT./Time		
<b>Task Force 6</b>	<b>Jeff Ayers</b>	1	N	ICP 1200	ICP 2400		
SRV #12 HC2 C-8	Armando Mendoza	20	N	ICP 1200	ICP 2400		
TN CNF 602 T6 E-54	Tim Wharton	3	N	ICP 1200	ICP 2400		
<b>Task Force 13</b>	<b>Candice Dolbier</b>	1	N	ICP 1200	ICP 2400		
Rock Hill Eng. 5 T4 E-65	Brad Peterson	3	N	ICP 1200	ICP 2400		
DOZB	Richard Wallmow	1	N	ICP 1200	ICP 2400		
Orange Springs TPL2 E-174	Leslie Jeter	1	N	ICP 1200	ICP 2400		
WAT2 T&Y E-148	Hunnicutt	1	N	ICP 1200	ICP 2400		
DOZB	Bryan Daunt	1	N	ICP 1200	ICP 2400		
Abernathy DZ2 E-110	Jimmy Abernathy	1	N	ICP 1200	ICP 2400		
Medic 5	Dan Goldstein	1	N	ICP 1200	ICP 2400		
7. Control Operations Prepare to support burn-out operations. Assist Division G through swing operational period. Assist Branch 1&2 as needed.							
8. Special Instructions Logging operations support will be coordinated through Incident Communications to provide IA support for Divisions A-F.							
9. Division/Group Communication Summary							
Function	Frequency	System	Channel	Function	Frequency	System	Channel
Command	Rx: 164.5750 Tx: 163.1500 Tone 206.5	King NIFC	9	Air to Ground	170.0000	King NIFC	13
Tactical Div/Group	169.9000	King NIFC	4	Air to Ground		King NIFC	
Prepared by (Resource Unit Leader) /s/ Gary Esposito (T)		Approved by (Planning Section Chief) /s/ Paul Summerfelt		Date 05/28/2007		Time 2130	

<b>AIR OPERATIONS SUMMARY</b>		<b>PREPARED BY:</b> Alex Stone			<b>PREPARED DATE/TIME:</b> 05/28/2007 1925				
<b>1. INCIDENT NAME:</b> Big Turnaround Complex		<b>2. OPERATIONAL PERIOD:</b> 05/29/07			<b>START TIME:</b> 0900	<b>END TIME:</b> 2000	<b>SUNRISE:</b> 0626 0627	<b>SUNSET:</b> 2025 (Folkston) 2027 (Waycross)	
<b>3. REMARKS (Safety Notes, Hazards, Air Operations Special Equipment, etc.):</b> Be Alert to Media Aircraft Over Fire Be Alert to High Winds and Heavy Smoke Helibases Located At Okefenokee NWR, Waycross, and Davis Helibase (Folkston, Ga.) Aviation Break at Florida Hwy. # 2 Maintain ½ mile initial call up <b>(Lifeflight Helicopter) Located At Jacksonville, Fla. 1-800-223-4878 (Shands Hospital)</b>					<b>4. MED EVAC A/C:</b> N17HX		<b>5. TFR: 7/1820-Ga</b> Radius: Rectangle Altitude: 3000 MSL NW Corner: Lat: 31-09-00 N Long: 82-38-50 W SE Corner: Lat: 30-15-00 N Long: 82-02-27 W		
<b>6. PERSONNEL</b>		<b>Phone</b>	<b>7. FREQUENCIES</b>	<b>AM</b>	<b>FM</b>	<b>8. FIXED-WING</b>		<b># Avail / Type/ Make-Model / FAA N# / Base(s)</b>	
AOBD: Alex Stone		Primary 520-991-7871	AIR/AIR FW:	122.575 East 123.1250 West 122.925 State		Air Tankers		3 Av. I P2V T-10, T-43 LCQ 3 Av. I P3 T-20, T-22, OCF 1 Av. I P2V T-06 OCF	
ATGS: Tom Dorigan 90K Georgia Bay Ed Encinas 3UV Dan Eckstein 0EB		479-857-9663 520-954-2358 928-595-1479	AIR/AIR RW:	122.575 East 123.1250 West 122.925 State		Lead Planes		1 Av. 81Z (ASM) B-88 LCQ 1 Av. 30W (ASM) B-2 OCF	
HLCO:			AIR/GROUND:		170.000 East 167.950 West Tone 110.9	Base FAX #:		1 AV LP(ASM) B-4-9 LCQ 1 AV LP L-1-9 LCQ 1 Av LP(ASM) L-2-1 LCQ	
ASGS: Bob Skeen		505-660-4521	COMMAND:			ATGS Aircraft		(1) 90K -----Beech Baron (2) 3UV----- Aero Commander (3) 0EB----- Kingair (4)	
HEBM: Zoni Anzalone (Pogo) HEBM Dave Langley (Waycross) HEBM: Melvin Tate (Davis)		505-240-3649	COMMAND RPT	Rx:	Tx:	Other:		(1) Flight Following With Pogo Helibase or Waycross Helibase (2) Initial Attack Aircraft For State Cessna 182's and CH-47 and UH-60's (3) Initial Attack For Okefenokee is N5738Y (Okee 6) (4) APPROVED HELISPOTS: Refer to Okefenokee NWR Dipsite Map (5) Presidential TFR in effect, centered over Brunswick starting 0930 today lasting through 1305 today. The outer ring of the TFR meets the north east corner of the TFR in effect over this incident. See the map posted on the board at Pogo helibase or check NOTAMS.	
Helibase Phones: Pogo Davis Waycross		912-496-4415 912-496-3765 912-218-8937	DECK FREQ:	168.350					
			TOLC FREQ:						

9. AIRCRAFT ASSIGNED (Use Additional Sheets As Necessary)

EAST ZONE AIRCRAFT							WEST ZONE AIRCRAFT						
FAA N#	TY	MAKE/MODEL	BASE	AVAIL	START	REMARKS	FAA N#	TY	MAKE/MODEL	BASE	AVAIL	START	REMARKS
N5BH	I	Sikorsky S-70	Davis	0900	0930	Bucket Drops	N/A	I	UH -60 Georgia NG	Waycross	0900	0930	Bucket Drops Initial Attack For State
N4503E (HT-763)	I	Sikorsky S-61	Davis	0900	0930	Bucket Drops	N/A	I	UH -60 Georgia NG	Waycross	0900	0930	Bucket Drops Initial Attack For State
N526MW	I	Kaman	Davis	0900	0930	Bucket Drops	Chopper 7	III	Bell 407 Georgia Forestry	Waycross	0900	0930	Recon / Admin For State Bucket Drops as Needed
N161KA	I	Kaman	Davis	0900	0930	Bucket Drops	90K		Beech Baron	Waycross	0900	0930	Aerial Supervision Sweat Farm Rd.
N15HX	II	Bell 205++	Pogo	0830	0900	Bucket Drops (Limited Category)	Various		Cessna 182's	Waycross	0900	0930	Aerial Detection and Supervision For State
N17HX	II	Bell 205++	Pogo	0830	0900	Bucket Drops							
N12HX	III	Bell 407	Pogo	0830	0900	Recon / Admin Bucket Drops as Needed							
N5738Y (Okee 6)	III	Bell 206	Pogo	0830	0900	Recon / Admin PSD Operations							
3UV		Aero Commander	Waycross	0900	0930	Aerial Supervision							
0EB		Kingair	Waycross	0900	0930	Aerial Supervision							

10. TASK/MISSION/ASSIGNMENT (Type/Function includes: Air Tactical, Retardant, Recon, Personnel Transport, Water Dropping, S&R, etc.)

TYPE/FUNCTION	NAME OF PERSONNEL OR CARGO (if applicable) OR INSTRUCTIONS FOR TACTICAL AIRCRAFT	MISSION START	FLY FROM	FLY TO
Type II Helicopter	Bucket Support For Line Personnel, Logistical Support	0900	Helibase	Fire and return
Type III Helicopter	Bucket Support / GIS Mapping / Recons as requested	0900	Helibase	Fire and return
Type I Helicopter	Bucket Support for Line Personnel, Initial Attack and Burn out Operations.	0930	Helibase	Fire and return
Air Attack Platforms	Aerial Supervision	0930	Waycross Airport	Fire and return
State Detection Fixed Wing	Aerial Detection and Initial Attack For New Fires	0930	Waycross Airport	Fire Patrol and Return

APPROVED BY: /s/ Alex Stone

DATE/TIME: 05-28-2007 / 1925



# SAFETY MESSAGE

---

**INCIDENT: BIG TURNAROUND COMPLEX**

**DATE: May 29, 2007**

**TIME: 0700-2400**

---

## Major Hazards and Risks:

**HYDRATION-** Had a case of dehydration in Branch One. Please make sure you and everyone you work with drinks enough water and an occasional electrolyte drink or consume some fruit. Stay away from too much caffeine and sugar. Remind everyone to monitor the color of their urine because in this country, with high humidity, you may not feel thirsty even though you are dehydrated.

**SNAGS** – Snags remain an issue, especially where you combine burned soil and mechanical soil disturbance like dozer line. Survey your work area prior to engagement. Avoid snag areas if possible.

**REBURN** – Will it ever end? Many of you have been spending a considerable amount of time dealing with re-burn. Because you have been doing so much of it for so long now would be a good time- in your breakouts-to discuss the safety issues. The Initial Attack component, the travel distance, the roads and dozer line, and the coordination between resources.

---

## REMEMBER THE BASICS – THEY CAN SAVE YOUR LIFE

- 10 Standard Fire Orders
- 18 Situations That Shout Watch Out
- L.C.E.S. = Lookouts, Communications, Escape Routes, Safety Zones
- Look Up, Look Down, and Look Around

**YOU ARE RESPONSIBLE FOR YOUR PERSONAL SAFETY**

IMT Safety Officers: Bruce Malloy SOF1, Dave Wolf SOF1

INCIDENT RADIO COMMUNICATIONS PLAN		INCIDENT NAME	DATE/TIME PREPARED		OPERATIONAL PERIOD		
		BIG TURNAROUND COMPLEX EAST ZONE	5/28/2007 1800		DATE 5/29/2007 TIME 0700-2400		
CH No.	CH NAME	ASSIGNMENT	RX FREQ WIDE NARROW	RX TONE NAC	TX FREQ WIDE NARROW	TX TONE NAC	MODE DIGITAL D ANALOG A MULTI M
1	TAC 1	Contingency, Chessler Structural, & Swamp Park Groups, Holding Group	168.0500 N		168.0500 N		
2	TAC 2	Firing Group	168.2000 N		168.2000 N		
3	TAC 3	Div A/B, Div. C-F, Div. G/H, Div I, Div J-M	168.6000 N		168.6000 N		
4	TAC 4	<b>Contingency Group</b> <b>Coordination TAC to other incidents.</b> <b>Channel 10 on Sweat farm and West Zone,</b> <b>Channel 5 on Florida Bugaboo</b>	169.9000 N		169.9000 N		
5	TAC 5 REPEATER	Southern Branch I	167.1000 N		169.7500 N		
6	TAC 6 REPEATER	Branch 2 Repeater Northern Branch I Repeater	168.1000 N		170.4500 N		
7	State Mutual Aid	Structural groups to local engines	154.2800 W		154.2800 W		
8	open						
9	OKR Waycross (linked to 10 & 11)	Command Repeater	164.5750 N		163.1500 N	206.5	
10	OKR Stephen Foster) Linked to 9 & 11	Command Repeater	167.1250 N		163.1500 N	156.7	
11	OKR Admin Site (Linked to 9 & 10)	Command Repeater	164.6250 N		163.1500 N	103.5	
12	OKR Eddy Look Out (Not Linked)	Command Repeater TAC for Div J-M	164.7750 N		163.1500 N	123.0	
13	AIR-GROUND	Big Turnaround Air	170.0000 N		170.0000 N		
14	<b>AIR GUARD</b>	Emergency contact or redirect with incident aircraft	<b>168.6250 N</b>		<b>168.6250 N</b>	<b>110.9</b>	
15	unassigned						
16	<b>AIR GUARD</b>	Emergency contact or redirect with incident aircraft	<b>168.6250 N</b>		<b>168.6250 N</b>	<b>110.9</b>	

PREPARED BY: Windy Berghofer COML

#### REMARKS

**There is radio noise at the boat ramp on TAC 1. Use TAC 4 if needed at that location.**

ICS-206 <b>MEDICAL PLAN</b>	1. Incident Name <b>Big Turnaround Complex</b>	2. Date Prepared <b>5/27/07</b>	3. Time Prepared <b>1800</b>	4. Operational Period <b>DAY/SWING SHIFTS 5/28/07</b>
--------------------------------	---	------------------------------------	---------------------------------	--

5. Incident Medical Aid Station						
Medical Aid Stations	Location			EMT-P	No	
<b>Medical Unit Big Turnaround</b>	<b>ICP</b>	<b>904-955-0022 / 928-606-2393 / 520-560-2742</b>			<b>X</b>	
<b>Medic 1 Koile/Wheaton</b>	<b>Div A/B</b>	<b>0700-1900</b>			<b>X</b>	
<b>Medic 2 Estares/Miller</b>	<b>Div G/H</b>	<b>0700-1900</b>			<b>X</b>	
<b>Medic 3 Nunez</b>	<b>Div J/M</b>	<b>0700-1900</b>			<b>X</b>	
<b>Medic 4 Luna</b>	<b>Holding Group</b>	<b>1200-2400</b>			<b>X</b>	
<b>Medic 5 Goldstein</b>	<b>Contingency Group</b>	<b>1200-2400</b>			<b>X</b>	
<b>Medic 6 Chevalier</b>	<b>Swamp Park Group</b>	<b>1200-2400</b>			<b>X</b>	
<b>Medic 7 Powers</b>	<b>Div I</b>	<b>0700-1900</b>			<b>X</b>	
<b>Medic 8 Nelson</b>	<b>Div C/F</b>	<b>0700-1900</b>			<b>X</b>	

6. Transportation				
A. Ambulance Services				
Name	Address	Phone	Paramedics	
			Yes	No
<b>Rescue One</b>	<b>ICP</b>	<b>928-606-2393 904-955-0022</b>	<b>X</b>	
<b>Ware County EMS</b>	<b>Waycross Georgia</b>	<b>912-287-4335</b>	<b>X</b>	
<b>Charlton Memorial EMS</b>	<b>1203 N Third St Folkston Ga</b>	<b>912-496-2121</b>	<b>X</b>	
<b>Trauma One (Air Ambulance)</b>	<b>Jacksonville</b>	<b>800-223-4878</b>	<b>X</b>	
<b>Baptist Life Flight (Air Ambulance)</b>	<b>Jacksonville</b>	<b>877-870-7779</b>	<b>X</b>	

7. Hospitals								
Name	Address	Travel Time		Phone	Helipad		Burn Center	
		Air	Grnd		Yes	No	Yes	No
<b>Charlton Memorial</b>	<b>1203 N 3<sup>rd</sup> St Folkston N30°50.80 W82°00.10</b>	<b>10 min</b>	<b>20 min.</b>	<b>912-496-2531</b>	<b>X</b>			<b>X</b>
<b>Satilla Regional (Northside of swamp)</b>	<b>410 Darling Ave Waycross Ga N31°13.56 W82°21.058</b>	<b>15 min</b>	<b>30 min</b>	<b>912-283-3030</b>	<b>X</b>			<b>X</b>
<b>Shands Hospital (Jax) Level 1 trauma center</b>	<b>Jacksonville, FL N 30' 20.97' W 81' 39.92'</b>	<b>30 min</b>	<b>1.5 hrs</b>	<b>904-244-0411</b>	<b>X</b>			<b>X</b>
<b>Shands Hospital Burn Center</b>	<b>Gainesville Fl N29°38.33 W082°20.73 OPS – 123.02</b>	<b>45 min</b>	<b>2.5 hrs</b>	<b>352-265-0200 352-265-0222 904-244-0411</b>	<b>X</b>		<b>X</b>	
<b>Family Practice Associates Clinic</b>	<b>1001 N Third St Folkston, Ga</b>		<b>15 min</b>	<b>912-496-4478</b>		<b>X</b>		<b>X</b>

8. Medical Emergency Procedures	
<p>Medical emergencies will be reported to the Division Supervisor. The Division Supervisor will assume command and call for the closest line medic, and resources in the division that are EMT qualified. The Division Supervisor will notify communications by radio or cell phone (Big Turnaround ICP 912-496-2111). Communications to notify MEDL @ 904-955-0022 / 928-606-2393 / 520-560-2742.</p> <p>The report should include type of illness/injury and exact location of the incident. Communications will clear the air for emergency traffic only and will request key personnel to report to communications. If an air medical helicopter is used within the fire perimeter, communications should notify the air operations director and helibase.</p> <p>After hours emergencies in Kingsland and/or Folkston: Call 911, then call communications @ 912-496-2111. Communications will call MEDL and designated paramedics will be routed to the scene to facilitate transportation needs.</p>	
9. Prepared by (Medical Unit Leader) <b>Jesus Hernandez / Nathan Becker</b>	10. Reviewed by (Safety Officer) <b>Bruce Malloy</b>

# ***INCIDENT EMERGENCY PLAN (IEP)***

The goal of this Incident Emergency Plan (IEP) is to provide the guidelines necessary to Locate, Triage, Extricate, Treat and Transport accident Patients. The Division/Group Supervisor will initially oversee the emergency. Radio communication will be on the "Command Frequency". Names of injured or deceased individuals should not be given over the radio. Deceased individuals and their equipment are not to be moved, except to accomplish rescue work or to protect the health and safety of others. It is expected this organization will come from resources assigned within the Division or nearest adjoining forces.

## **DIVISION/GROUP SUPERVISOR**

- Conduct Size-up of the Incident (Nature of Accident, Number/Type of Resources, Location)
- Coordinate "Line EMT" response to the accident (Utilize Closest EMT's).
- Begin "TRIAGE"
- Determine and initiate treatment and transportation needs
- Evaluate special needs (Law Enforcement, Heavy Rescue, Haz Mat)
- Coordinate with Air Attack for Air-Medical transportation needs
- Preserve the scene for accident investigation

## **MEDICAL GROUP SUPERVISOR (This position will be filled, only if needed)**

- Supervise TRIAGE, Treatment and Transportation Unit Leaders.
- Place orders through Communications for ground ambulance, medical personnel, as needed
- Ensure proper security and traffic control.

## **TRIAGE UNIT LEADER (This position will be filled, only if needed)**

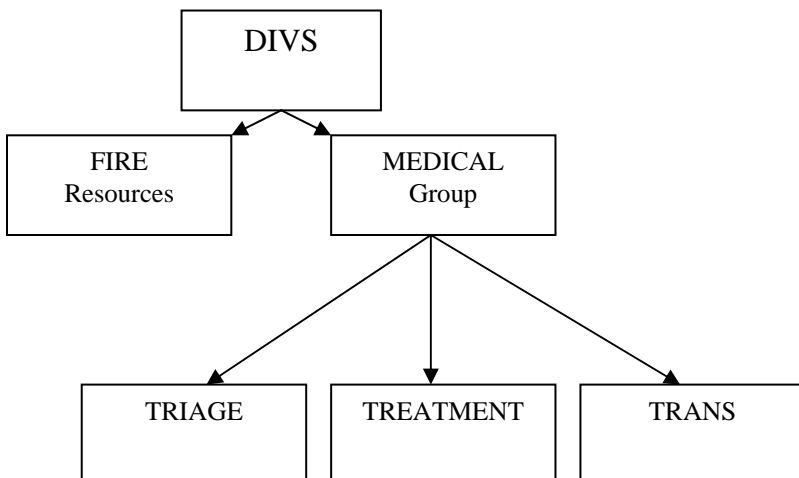
- Locate and TRIAGE all patients and relays information to Medical Group Supervisor.
- Ensure that Airway, Breathing and Circulation stabilization of patients is addressed during TRIAGE.
- Coordinate with Treatment Unit Leader for patient stabilization, extrication, and movement to treatment area.
- Utilize the "START" TRIAGE system.

## **TREATMENT UNIT LEADER (This position will be filled, only if needed)**

- Establishes Immediate, Delayed and Minor treatment areas.
- Direct treatment and stabilization of Patients.
- Prioritize Patients for transport.
- Request medical personnel and supplies, as needed.
- Ensure continual TRIAGE of patients in treatment area.
- Coordinate with TRIAGE Unit leader for delivery of patients to the treatment area.
- Coordinate with the Transportation Unit Leader for delivery of patients to ambulances.
- Ensure documentation of patient conditions and treatments on TRIAGE tags.

## **TRANSPORTATION UNIT LEADER (This position will be filled, only if needed)**

- Coordinate all patient transportation to medical facilities, air and ground.
- Establish communication with hospitals receiving patients.
- Coordinate with Treatment Unit Leader to determine number and category of patients.
- Designate ambulance/helicopter loading areas.
- Determine mode (air/ground) of patient transportation.
- Ensure patients information and destination is recorded.



- MINOR: Walking Wounded
- DELAYED: CAN Follow Simple Commands
- IMMEDIATE: Respirations have been restored  
Respirations above 30  
Radial Pulse Absent  
Capillary Refill > 2 seconds  
CAN NOT Follow Simple Command
- FATALITY: No Respirations after head tilt

## SHIFT TICKET INSTRUCTIONS

All Emergency Equipment Shift Tickets should be submitted at the end of each operational period.

Please fill out the form completely.

When the unit of work is miles, beginning and ending odometer readings must be shown.

When the unit of work is days, beginning and ending clock hours of work must be shown so that work/rest ratio can be monitored.

There is no special block for the resource order number, so please remember to write your E# in the upper right hand corner.



## CONTRACTOR PERFORMANCE EVALUATIONS

All contractors assigned to the incident should get a performance rating from their supervisor.

Please pick up this form at briefing, in finance, or plans.



Have your supervisor on the incident complete the form. Submit your evaluation to finance or documentation upon demobilization.

# BIG TURNAROUND COMPLEX – EAST ZONE

Communications	912-496-2111
Medical	912-496-4359
Ordering	912-496-4369
Ordering	912-496-4710
Demob	912-496-4173
Finance	912-496-4177
Finance	912-496-4102
Finance Fax	912-496-7536
Operations	912-496-4132
FBAN	912-496-4175
Information	912-496-4176
Ground Support	912-496-4368
Pogo HB	912-496-4415
Davis HB	912-496 3765

## RESTAURANTS

		SUN	MON-THURS	FRI-SAT
<b>KINGSLAND</b>	<b>APPLEBEE'S</b>	<b>1 100-2000</b>	<b>1 100-2300</b>	<b>1 100-0100</b>
	<b>CRACKER BARREL</b>	<b>0600-2000</b>	<b>0600-2000</b>	<b>0600-2300</b>
	<b>Quizno's</b>	<b>24 HRS</b>		
	<b>RUBY TUESDAY'S</b>	<b>1 100-1100</b>	<b>1 100-1100</b>	<b>1 100-1200</b>
	<b>SHONEY'S</b>			
	<b>SONNY'S</b>	<b>1 100-2100</b>	<b>1 100-2100</b>	<b>1 100-2130</b>
	<b>WAFFLE HOUSE</b>	<b>24 HRS</b>		
<b>FOLKSTON</b>	<b>MICHAEL'S DELI</b>	<b>0630-2100</b>	<b>0630-2100</b>	<b>0630-2000</b>
	<b>OKEFENOKEE RESTAURANT</b>	<b>CLOSED</b>	<b>0630-2100</b>	<b>0630-2100</b>

## SIGN IN PROCEDURE

Meals may not exceed per diem rates of B-\$7, L-\$11, D-\$18.

Ticket or sign-in sheet – name, resource #(C, E, or O), fire name. Crew boss may provide manifest for names. All names of crew must be recorded for meals consumed. If recording on ticket, use front where possible.

Use govt. travel card if you have one.

Govt. will not pay for alcohol, movies or phones.

If you are on per diem, deduct any meals you sign for, or which are provided by the govt., from your travel.

The McDonalds in Folkston is offering a firefighter discount.

**UPCOMING OVERHEAD DEMOB**

LAST SHIFT	NAME	TVL	JET PORT	REQ#	JOB	DEMOB CITY	DEMOB ST
<b>LAST SHIFT TUESDAY, TRAVEL WEDNESDAY</b>							
05/29/2007	ALLEN, NORMAN	AIR	CDC	O-303	HECM	CEDER CITY	UT
05/29/2007	CALABRESE, JOHN	AIR	CRW	O-372	PIO2	CHARLESTON	WV
05/29/2007	CARPENTER, DENNIS	AIR	RDD	O-348	HECM	LEWISTON	CA
05/29/2007	DAVIS, ROBERT M	AIR	FAI	O-357	RCDM	FAIRBANKS	AK
05/29/2007	HALES, MARTIE J	AIR	SAN	O-355	ORDM	SAN DIEGO	CA
05/29/2007	LIDDLE, SHAUNAE			O-311	HECM	ST GEORGE	UT
05/29/2007	MAPES, JEREMY S	AIR	BTM	O-350	HECM	BUTTE	MT
05/29/2007	MILLER, JORI N	AIR	AVL	O-370	EMTB	MAGGIE VALLEY	NC
05/29/2007	NELSON, MATT	AIR	BTM	O-349	HECM	BUTTE	MT
05/29/2007	PALAKIKO, LEN	A/R	PDX	O-351	HECM	PORTLAND	OR
05/29/2007	PEDERSON, PEDER	AIR	BTM	O-353	HELM	BUTTE	MT
05/29/2007	ROBINSON, SCOTT	A/R	GEG	O-446	HELM	COEUR D'ALENE	WA
05/29/2007	SMARTLOWIT, RODNEY J	AIR	YKM	O-346	STEN	YAKIMA	WA
05/29/2007	CREW - T2 - SRV #12	AIR	BLM	C-8	HC2	VALE	CO
05/29/2007	CREW - T2 - SRV #14	AIR	BLM	C-7	HC2	BOISE	ID
<b>LAST SHIFT WEDNESDAY, TRAVEL THURSDAY</b>							
05/30/2007	MANUEL, PHILLIP E	REN		O-366	IMET	BLACKSBURG	VA
05/30/2007	MILLER, WILLIAM	REN		O-336	SOF2	MAGGIE VALLEY	NC
05/30/2007	RAFFO, KEVIN A	AOV		O-368	HELM	LAUREL	MS
05/30/2007	SCHLOSBERG, ANDREW J	A/R	COS	O-365	RADO	WOODLAND PARK	CO
05/30/2007	STEVENSON, CHRIS	AOV		O-480	TFLD	MC COOL	MS
05/30/2007	WELCH, STACEY A	AOV		O-226	SEC1	TOWNSEND	GA
05/30/2007	WOLF, DAVID	AIR	FLG	O-406.44	SOF1	FLAGSTAFF	AZ
05/30/2007	WUEBBER, SCOTT	AIR	BZN	O-443	SOF2	BOZEMAN	MT
05/30/2007	LAKE WOODRUFF #7	AOV		E-170	TPL3		
<b>LAST SHIFT THURSDAY, TRAVEL FRIDAY</b>							
05/31/2007	ABEL, TODD	AIR	PHX	O-281	DOZB	PRESCOTT	AZ
05/31/2007	ALEXANDER, CHARLES M	AOV		O-379	SEC1	HARRISONBURG	VA
05/31/2007	AYERS, JEFF	AIR	CEC	O-291	TFLD	EUREKA-ARCATA	CA
05/31/2007	BURNS, CHARLEY	AIR	SEA	O-388	DIVS	SEATTLE	WA
05/31/2007	GLINESKI, TREY	AIR	BOI	O-398	DOZB	BOISE	ID
05/31/2007	JOHNSON, LULA M	AIR	AEX	O-403	GISS	ALEXANDRIA	LA
05/31/2007	MITCHELL, ALLEN	AIR	MFR	O-382	OPBD	MEDFORD	OR
05/31/2007	PRINDIVILLE, CHRIS	A/R	RDD	O-364	RADO	REDDING	CA
05/31/2007	REID, DAVID A	A/R	DEN	O-391	STEN	DENVER	CO
05/31/2007	VILLA, PETE	AIR	CEC	O-387	DIVS	CRESCENT CITY	CA
05/31/2007	WALLMOW, RICHARD	AIR	PDX	O-396	DOZB	PORTLAND	OR
05/31/2007	YOUNG, RICK L	AIR	CEC	O-277	DIVS	CRESENT CITY	CA
05/31/2007	SAVANNAH RIVER#03	AOV		E-169	TPL2		

05/31/2007	GRAYBACK NCR5A	AIR	RDM	C-13	HC2	REDMOND	OR
05/31/2007	FERGUSON NCC-9B	AIR	RDM	C-12	HC2	REDMOND	OR
05/31/2007	FERGUSON NCC-9A	AIR	RDM	C-11	HC2	REDMOND	OR
05/31/2007	GRAYBACK FORESTR	AIR	RDM	C-14	HC2	REDMOND	OR
05/31/2007	PATRICK ENVIRONMENT	AIR	RDM	C-10	HC2	REDMOND	OR

**LAST SHIFT FRIDAY, TRAVEL SATURDAY**

06/01/2007	DAVIDSON, ROBERT	A/R	PDX	O-408	IADP	TROUT LAKE	WA
06/01/2007	DESHAZER, LINDSEY	AIR	ABQ	O-417	EQTR		NM
06/01/2007	ENCINAS, EDUARDO		TUS	O-406.17	ATGS		
06/01/2007	HUGGINS, JEROLD (ALBERT) R	AIR	CLM	O-401	DOZB	FORKS	WA
06/01/2007	KOHN, JON	A/R	BIL	O-458	PIO2	BILLINGS	MT
06/01/2007	MARETT, JAMES	A/R	CTZ	O-426	ABRO	MANCOS	CO
06/01/2007	MARKS, CHRIS	A/R	PHX	O-416	DIVS	FLAGSTAFF	AZ
06/01/2007	PARHAM, JOSEPH	AOV		O-377	SEC1	MEADVILLE	MS
06/01/2007	SANDOW, PATRICIA M.			O-318	CASC	HOBOKEN	GA
06/01/2007	SCHWOPE, CARL	A/R		O-406.19	DIVS	MARBLE FALLS	TX
06/01/2007	SUMPTER, BRYAN H	A/R	ABQ	O-392	STEN	ALBUQUERQUE	
06/01/2007	TAUBE, SHARON		SLC	O-406.27	FDUL	SALT LAKE CITY	UT

**IF YOU ARE PLANNING TO TRAVEL HOME BY AIR, PLEASE SEE DEMOB TO CONFIRM YOUR FLIGHT INFO AT LEAST 48 HOURS PRIOR TO TRAVEL !**

**The following resources are released from this incident at 1800hrs on 5/29 and will be reassigned to the West Zone of this fire**

<b>E-432 West Metro</b>	<b>E-22 Wildland Fire</b>
<b>E-434 Colorado</b>	<b>E-64 Engine 2132</b>
<b>E-435 Engine 4632</b>	<b>E-75 Wildland Fire</b>
<b>E-436 Engine 204</b>	<b>O-464, TFLD Tom McKibben</b>
<b>E-21 Wildland Fire</b>	<b>O-391 STEN David Reid</b>