

BIG TURNAROUND COMPLEX

EAST ZONE

INCIDENT ACTION PLAN

May 31, 2007

0700 - 2400



8. CONSTRUCTING FIRELINE WITHOUT SAFE ANCHOR POINT

| | | | | | | | | | | | | |
|--|---|---|-------------------------------------|---|--|--|---|--|---|--|---|--|
| INCIDENT OBJECTIVES | 1 INCIDENT NAME Big Turnaround Complex - East Zone | 2. DATE PREPARED 05/30/2007 | 3. TIME PREPARED 2200 | | | | | | | | | |
| 4. OPERATIONAL PERIOD (DATE/TIME) May 31, 2007 0700 - 2400 OPERATIONAL PERIOD | | | | | | | | | | | | |
| 5. GENERAL CONTROL OBJECTIVES FOR THE INCIDENT (INCLUDE ALTERNATIVES) <ol style="list-style-type: none"> 1. Ensure firefighter and public safety through adherence to all safety standards, maintaining situational awareness and appropriate implementation of evacuations, closures, and temporary flight restrictions. 2. Protect / minimize threats / loss to private investments; key cultural features as listed in the Delegation of Authority; and protect the integrity of the Okefenokee Wilderness. 3. Manage the fires within the swamp under a containment strategy in accordance with suppression actions outlined in the WFSA. In the East Zone, contain the fire West of the Swamp Perimeter Road in Charlton County; South and west of Hwy. 1 and the CSX Railroad line; and within the Swamp Road. 4. Provide accurate and timely information to agencies, stakeholders, and the public through public meetings, news releases, website updates, reports, meetings and personal contacts. 5. Manage the East Zone cost effectively and in an efficient manner to contain the fire by June 17, 2007 at a cost below \$20,200,000. | | | | | | | | | | | | |
| 6. WEATHER FORCAST FOR OPERATIONAL PERIOD See attached Weather and Fire Behavior Forecast for detailed information. | | | | | | | | | | | | |
| 7. GENERAL/SAFETY MESSAGE A. There are 6-35 trains/day on the CSX tracks in Branch I: there are few automatic railroad crossing warning devices:. stop before crossing the tracks and verify it is safe before crossing the tracks. B. GFC will assume command on any escapes /IA outside Perimeter Road; assist as needed. C. Include snag awareness in all briefings. D. SOF's and FOB's to notify DIVS as they enter/leave divisions. | | | | | | | | | | | | |
| <table border="0"> <tr> <td><input checked="" type="checkbox"/> ORGANIZATION LIST (ICS 203)</td> <td><input checked="" type="checkbox"/> MEDICAL PLAN (ICS 206)</td> <td><input checked="" type="checkbox"/> SAFETY MESSAGE</td> </tr> <tr> <td><input checked="" type="checkbox"/> ASSIGNMENT LIST (ICS 204)</td> <td><input checked="" type="checkbox"/> AIR OPS. SUMMARY (ICS 220)</td> <td><input checked="" type="checkbox"/> FIRE WEATHER FORECAST</td> </tr> <tr> <td><input checked="" type="checkbox"/> COMMUNICATION PLAN (ICS 205)</td> <td><input checked="" type="checkbox"/> INCIDENT EMERGENCY PLAN</td> <td><input checked="" type="checkbox"/> FIRE BEHAVIOR FORECAST</td> </tr> </table> | | | | <input checked="" type="checkbox"/> ORGANIZATION LIST (ICS 203) | <input checked="" type="checkbox"/> MEDICAL PLAN (ICS 206) | <input checked="" type="checkbox"/> SAFETY MESSAGE | <input checked="" type="checkbox"/> ASSIGNMENT LIST (ICS 204) | <input checked="" type="checkbox"/> AIR OPS. SUMMARY (ICS 220) | <input checked="" type="checkbox"/> FIRE WEATHER FORECAST | <input checked="" type="checkbox"/> COMMUNICATION PLAN (ICS 205) | <input checked="" type="checkbox"/> INCIDENT EMERGENCY PLAN | <input checked="" type="checkbox"/> FIRE BEHAVIOR FORECAST |
| <input checked="" type="checkbox"/> ORGANIZATION LIST (ICS 203) | <input checked="" type="checkbox"/> MEDICAL PLAN (ICS 206) | <input checked="" type="checkbox"/> SAFETY MESSAGE | | | | | | | | | | |
| <input checked="" type="checkbox"/> ASSIGNMENT LIST (ICS 204) | <input checked="" type="checkbox"/> AIR OPS. SUMMARY (ICS 220) | <input checked="" type="checkbox"/> FIRE WEATHER FORECAST | | | | | | | | | | |
| <input checked="" type="checkbox"/> COMMUNICATION PLAN (ICS 205) | <input checked="" type="checkbox"/> INCIDENT EMERGENCY PLAN | <input checked="" type="checkbox"/> FIRE BEHAVIOR FORECAST | | | | | | | | | | |
| ICS 202 | 9. PREPARED BY (PLANNING SECTION CHIEF) Paul Summerfelt | 10. APPROVED BY (INCIDENT COMMANDER) Dan Oltrogge | | | | | | | | | | |

**** Southwest Area IMT ****

| ORGANIZATION ASSIGNMENT LIST | | 9. Operations Section | |
|---|------------------------------------|---|--|
| 1. Incident Name BIG TURNAROUND COMPLEX – EAST ZONE | | Chief | Curtis Heaton / Todd Richards (T) 0700 - 1900 |
| 2. Date 05/30/2007 | | 3. Time 2200 | |
| 4. Operational Period May 31, 2007 0700 - 2400 | | a. Branch I – Division/Group | |
| Position | | Name | |
| 5. Incident Commander and Staff | | BRANCH DIRECTOR | |
| Incident Commander | Dan Oltrogge/Pruett Small (T) | Bill Bryant – Day Chris Wilcox - Night | |
| Safety Officer | Bruce Malloy / Dave Wolf | Division/Group | AB Jim Bowling |
| Information Officer | Cathy Schmidlin/ Ron De Hart | Division/Group | C-F Michael Carlson |
| Liaison Officer | Sam Whitted | Division/Group | |
| 6. Agency Representative | | b. Branch II – Divisions/Groups | |
| Agency | Name | BRANCH DIRECTOR | |
| FWS | Howard McCullough | Allen Mitchell/Carl Schwoppe (T)Day Chris Wilcox - Night | |
| FWS | Russ Langsford | Division/Group | G Todd Abel Chris Marks (T) |
| GFC | Eric Harris | Division/Group | HI LanceElmore |
| Charlton Co. EM | Sgt. Joey Chancy | Division/Group | J Jeff Andrews |
| GEMA/Charlton Co. | Gary Rice | | K-M Matt Hoehna |
| GEMA/Ware Co. | Vicki Thompson | Division/Group | Holding Group Charley Burns |
| 7. Planning Section | | Division/Group | Southern Group Duane Tewa |
| Chief | Paul Summerfelt | Division/Group | |
| Resources Unit | Glenda Womack Gary Esposito (T) | d. Groups | |
| Situation Unit | Dave Dobbs | Division/Group | Contingency Jayson Coil |
| Documentation Unit | Dana Bagnoli | Division/Group | |
| FBAN | Stewart Turner | e. Air Operations Branch | |
| GIS | Rick Crawford | Air Operations Branch Director | Alex Stone |
| IMET | Phil Manuel | Air Attack Supervisor | Dan Eckstein / Ed Encinas |
| Demobilization Unit | Paul Kaiser | Air Support Group Supervisor | Bob Skeen |
| 8. Logistics Section | | Helibase Manager | Zoni Anzalone |
| Chief | Ed Freed | 10. Finance Section | |
| Supply Unit | Marcus Medina | Chief | Darla Jo Quick |
| Facilities Unit | Jack Whetstone | Time Unit | Lisa Angle |
| Ground Support Unit | Stan Jones | Procurement Unit | Rosalind Sorrell |
| Communications Unit | Carl Berghofer/Jim Rallis (T) | Compensation/Claims Unit | Gerri Talgo |
| Medical Unit | Nate Becker | Cost Unit | Roxane Raley |
| Security Manager | Walter Sellers | Prepared by (Resource Unit Leader) | |
| Food Unit | Sharon Taube | Glenda Womack | |

Fire Weather Forecast

FORECAST NO: 27

NAME OF FIRE: Big Turnaround Complex

PREDICTION FOR: Day and Swing Shift

UNIT: Okefenokee Wildlife Refuge

SHIFT DATE: Thursday 05/31/07

SIGNED: John Quagliariello
Incident Meteorologist

TIME AND DATE 1900
FORECAST ISSUED: 05/30/2007

WEATHER DISCUSSION:

High pressure will persist off the Carolina coast today, allowing easterly winds and dry conditions to continue across the incident.

The main concern: **Dry and breezy conditions this afternoon.**

WEATHER FORECAST THURSDAY:

WEATHER: Patchy early morning fog. Partly cloudy, becoming mostly cloudy in the late morning and afternoon.

MAX TEMPERATURES: Around 88. (24 hour trend = down 2 degrees)

MIN HUMIDITY: 30 to 35 percent (24 hour trend = up 4 percent)

20 FT WINDS: East-northeast 2 to 5 mph...becoming east 5 to 8 mph after 1000, then becoming east-southeast 8 to 11 mph with gusts to 18 mph after 1200.

STABILITY/INVERSION: Mixing heights around 7000 ft.

Dispersion Index 65. Haines Index 4.

TRANSPORT WINDS: East-southeast 18 mph.

WEATHER FORECAST THURSDAY NIGHT:

WEATHER: Partly cloudy. Patchy fog late.

MIN TEMPERATURES: Low around 59. (24 hour trend = up 6 degrees)

MAX HUMIDITY: Recovery around 80 percent near hot spots and 95 to 100 percent elsewhere.

20 FT WINDS: Southeast 6 to 10 mph with gusts to 16 mph, becoming light and variable after 2100.

STABILITY/INVERSION: Inversion to 400 feet. Dispersion Index 4.

OUTLOOK FOR FRIDAY: Partly cloudy. High around 87. Minimum humidity 33 to 38 percent. East-northeast 2 to 5 mph...becoming east 5 to 8 mph after 1000, then becoming east-southeast 8 to 11 mph with gusts to 18 mph after 1200.

SUNRISE/SUNSET: Thursday May 31...0625/2025

EXTENDED...

An area of low pressure is expected to develop over the southeastern Gulf of Mexico on Friday, and then track across the Florida Peninsula over the weekend. An approaching cold front should cause winds to shift southwest by early next week.

| | Saturday | Sunday | Monday | Tuesday |
|--------------|---------------|-------------------|---------------|---------------|
| Low | 62° | 65° | 66° | 66° |
| High | 85° | 85° | 88° | 88° |
| Min RH | 43-48% | 43-48% | 40-45% | 40-45% |
| 20 ft. Winds | ESE 5-10 mph | Variable 5-10 mph | SW 8-12 mph | SW 8-12 mph |
| Weather | Mostly Cloudy | Mostly Cloudy | Mostly Cloudy | Mostly Cloudy |
| PoP | 30% | 30% | 20% | 20% |

Fire Behavior Forecast

| | |
|---|--|
| <u>Forecast No. 42</u> | <u>Prediction for Day Shift</u> |
| <u>Name of Fire: Big Turnaround Complex</u> | <u>Shift Date: May 31, 2007</u> |
| <u>Time and Date Forecast Issued</u> <u>1800 hrs 5/30/2007</u> | <u>Signed : Stewart Turner</u> <u>Fire Behavior Analyst</u> |

Weather Summary (See Detailed Weather Forecast in the IAP):

Partly cloudy with temperatures reaching the high 80's. Minimum relative humidity will range from 30-35%. East winds will range from 8-11 mph sustained in the afternoon. A Haines index of 4 and a dispersion index of 65 are forecast.

General Fire Behavior: Today will not be as big of a fire behavior day as yesterday but it is still dry, hot and windy. If the cloud cover sticks around all day shading the fuels expect the fire behavior to be less active. Otherwise expect moderate fire behavior after the morning inversion breaks around 0930. Fire behavior will increase to active by 1100 and very active during the peak hours 1600 through 2000 hrs. Anticipate and plan for very active to extreme fire behavior with any head fire. During peak hours swamp shrub and swamp bay fuels will burn intensely on the surface producing 8 to 15 foot lengths and spread rates of 10 to 12 feet/minute. Brisk east winds will facilitate torching and short range spotting out to 100 yards. The swamp fuels will produce moderate backing spread rates of 2-4 feet/minute. During peak burning hours, pine fuels will spread at 60-80 feet/minute with very high intensities in the palmetto/gallberry rough (15-30 ft flame lengths). Single tree and group torching in open canopy pine can produce spotting out to 300 yards. Young, closed canopy pine plantations (5-10yrs) have the potential to support sustained crown fire. Probability of ignition will be 70% during the peak burning period without any shading.

Specific Fire Behavior:

Branch I: Needle cast and reburn continue to plague this Branch. Cloud shading will hinder the reburn and hide any remaining hot spots. Flame lengths of 2-4 feet are common. Low to moderate intensity burnout along portions of the swamp edge break from DIV F to the branch break has created a high potential for reburn.

Branch II: South of the Sally Head the main fire continues to back to the southeast with 4-10 ft. flame lengths during the peak of the day. Unchecked this fire will reach the swamp perimeter in 3-4 days. The fire edge will continue to back to the East in DIV J. DIV HI will have smoldering fire as the burnout area burns out. Backing spread during peak hours in the swamp shrub will range from 2-4 feet/minute moving near 1/3-1/2 mile per day. DIV K will continue to have reburn potential in the needle cast.

Air Operations: Inversions will persist until 0900. No restrictions to air operations due to smoke or winds

Safety: This is day 90 without significant rainfall (>.25") in southeast Georgia. The fuels are dry and will burn intensely. Don't expect them to behave as they do in a "normal" year, this is an extreme year.

| | | | | | | | |
|---|---|---|--|---------------------------|---------------------------------|--------------------|---------|
| DIVISION ASSIGNMENT LIST | | | 1. Branch 1 Bill Bryant-Day Chris Wilcox-Night | | 2. Division/Group A-B | | |
| 3. Incident Name Big Turnaround Complex – East Zone | | | 4. Operational Period Date: 05/31/2007 | | Time: 0700 - 1900 | | |
| 5. Operations Personnel | | | | | | | |
| Operations Chief | | Curtis Heaton Todd Richards(T) | | Division/Group Supervisor | | Jim Bowling | |
| 6. Resources Assigned this Period | | | | | | | |
| Strike Team/Task Force/ Resource Designator | Leader | Number Persons | Trans. Needed | Drop Off PT./Time | Pick Up PT./Time | | |
| Task Force 4 | Mike Smith Reggie Forcine(T) | 2 | N | ICP 0700 | ICP 1900 | | |
| Pat Rick T2 IA C-10 | James Braham | 20 | N | ICP 0700 | ICP 1900 | | |
| NFC #2 T6 E-235 | Earl Wooten | 2 | N | ICP 0700 | ICP 1900 | | |
| Rocky Mtn. T6 E-429 | Mike Ivancio | 3 | N | ICP 0700 | ICP 1900 | | |
| Fire Trax 3 10-WY T6 E-431 | Alan Marble | 3 | N | ICP 0700 | ICP 1900 | | |
| Task Force 1 | Brian Hicks Anthony Carver (T) | 2 | N | ICP 0700 | ICP 1900 | | |
| National Fire T6 E-531 | Rito Niklaus | 1 | N | ICP 0700 | ICP 1900 | | |
| WAT1 T&Y E-500 | Andrews | 1 | N | ICP 0700 | ICP 1900 | | |
| Ferguson 9CC C-11 | Soren McCallister | 20 | N | ICP 0700 | ICP 1900 | | |
| WAT2 Timberline E-522 | Barney Ray McGovern | 1 | N | ICP 0700 | ICP 1900 | | |
| | | | | | | | |
| | | | | | | | |
| SOF2 | Louie Casaus | 1 | N | ICP 0700 | ICP 1900 | | |
| Medic 1 | Danni Koile/Bob Wheaton | 2 | N | ICP 0700 | ICP 1900 | | |
| | | | | | | | |
| | | | | | | | |
| | | | | | | | |
| | | | | | | | |
| | | | | | | | |
| | | | | | | | |
| | | | | | | | |
| 7. Control Operations Patrol and mop-up 100-200 feet. Continue to suppress re-burn pockets. Task Force 4 and Strike Team 3 to secure accessible area in and around Swamp Park area. | | | | | | | |
| 8. Special Instructions Be prepared to assist GFC with I/A as requested. Logging operations support will be coordinated through Incident Communications to provide IA support for Divisions A-F. Division A- stop at all railroad crossings. | | | | | | | |
| 9. Division/Group Communication Summary | | | | | | | |
| Function | Frequency | System | Channel | Function | Frequency | System | Channel |
| Command | Rx: 164.5750 Tx: 163.1500 Tone 206.5 | King NIFC | 9 | Air to Ground | 170.0000 | King NIFC | 13 |
| Tactical Div/Group | 168.6000 | King NIFC | 3 | Air to Ground Bucket | 169.150 | King NIFC | 8 |
| Prepared by (Resource Unit Leader) /s/ Gary Esposito (T) | | Approved by (Planning Section Chief) /s/ Paul Summerfelt | | Date 05/30/2007 | | Time 2200 | |

| | | | | | | | |
|--|---|--|---------------|---------------------------------|------------------|--------------|---------|
| DIVISION ASSIGNMENT LIST | | 1. Branch 1 Bill Bryant-Day Chris Wilcox-Night | | 2. Division/Group C-F | | | |
| 3. Incident Name Big Turnaround Complex – East Zone | | 4. Operational Period Date: 05/31/2007 Time: 0700 - 1900 | | | | | |
| 5. Operations Personnel | | | | | | | |
| Operations Chief Curtis Heaton Todd Richards(T) | | Division/Group Supervisor Michael Carlson | | | | | |
| 6. Resources Assigned this Period | | | | | | | |
| Strike Team/Task Force/ Resource Designator | Leader | Number Persons | Trans. Needed | Drop Off PT./Time | Pick Up PT./Time | | |
| Task Force 3 | Jerry Fullerton Lance Robinson (T) | 2 | N | ICP 0700 | ICP 1900 | | |
| OKR 41 T6 E-306 | Will Sikes | 2 | N | ICP 0700 | ICP 1900 | | |
| RA-Cour 4633 T6 E-430 | Jerry Fullerton | 3 | N | ICP 0700 | ICP 1900 | | |
| Sunfire #1 T6 E-433 | Dennis McMillian | 3 | N | ICP 0700 | ICP 1900 | | |
| SHF-611 T6 E-437 | Korey Bowser | 3 | N | ICP 0700 | ICP 1900 | | |
| Task Force 14 | Eric Meekins | 1 | N | ICP 0700 | ICP 1900 | | |
| Timmermann E1 T6 E-537 | John Timmermann | 1 | N | ICP 0700 | ICP 1900 | | |
| Bayou #1 E-536 | TJ Lowter | 1 | N | ICP 0700 | ICP 1900 | | |
| Eagle's Eng. 1 T6 E-321 | Bryon Treas | 3 | N | ICP 0700 | ICP 1900 | | |
| Excavator B&E E-507 | Bobby Strickland | 1 | N | ICP 0700 | ICP 1900 | | |
| Excavator B&E E-508 | Joshua Strickland | 1 | N | ICP 0700 | ICP 1900 | | |
| Excavator E-259 | Craig Crawford | 1 | N | ICP 0700 | ICP 1900 | | |
| Medic 8 | Tammy Nelson | 1 | N | ICP 0700 | ICP 1900 | | |
| 7. Control Operations Continue to patrol and mop up Div C -F. Continue to suppress re-burn. | | | | | | | |
| 8. Special Instructions Logging operations support will be coordinated through Incident communications to provide IA support for Divisions C-F. Division C- Stop at all railroad crossings. Division C-F-Road Task Force 12 will be conducting road repair. | | | | | | | |
| 9. Division/Group Communication Summary | | | | | | | |
| Function | Frequency | System | Channel | Function | Frequency | System | Channel |
| Command | Rx: 164.6250 Tx: 163.1500 Tone 103.5 | King NIFC | 11 | Air to Ground | 170.0000 | King NIFC | 13 |
| Tactical Div/Group | 168.6000 | King NIFC | 3 | Air to Ground Bucket | 169.150 | King NIFC | 8 |
| Prepared by (Resource Unit Leader) /s/ Gary Esposito (T) | | Approved by (Planning Section Chief) /s/ Paul Summerfelt | | Date 05/30/2007 | | Time 2200 | |

| | | | | | | | |
|---|--|--|---------------|--|------------------|--------------|---------|
| DIVISION ASSIGNMENT LIST | | 1. Branch 2 Allen Mitchell/Carl Schwope (T) Chris Wilcox-Night | | 2. Division/Group G | | | |
| 3. Incident Name Big Turnaround Complex – East Zone | | 4. Operational Period Date: 05/31/2007 Time: 0700 - 1900 | | | | | |
| 5. Operations Personnel | | | | | | | |
| Operations Chief Curtis Heaton Todd Richards(T) | | Division/Group Supervisor | | Todd Abel Chris Marks (T) | | | |
| 6. Resources Assigned this Period | | | | | | | |
| Strike Team/Task Force/ Resource Designator | Leader | Number Persons | Trans. Needed | Drop Off PT./Time | Pick Up PT./Time | | |
| Firing Boss-Homestead | Rob Vernachio | 1 | N | ICP 0700 | ICP 1900 | | |
| Task Force 11 | Chet Dieringer Sean Daugherty (T) | 2 | N | ICP 0700 | ICP 1900 | | |
| Pro Temps Inc #2 T6 E-142 | George Rogers | 2 | N | ICP 0700 | ICP 1900 | | |
| TX Fire Eng 151 T6 E-239 | Chris Balough | 2 | N | ICP 0700 | ICP 1900 | | |
| Pro Temp Inc #3 T5 E-144 | David Jones | 3 | N | ICP 0700 | ICP 1900 | | |
| WAT3 E-243 | Lee Calhoun | 1 | N | ICP 0700 | ICP 1900 | | |
| Strike Team 4 | Meg Wallmow | 1 | N | ICP 0700 | ICP 1900 | | |
| MS-MNF TPL E-8 | Henry Redmond | 2 | N | ICP 0700 | ICP 1900 | | |
| SFS DOZ1 E-272 | John Mack | 1 | N | ICP 0700 | ICP 1900 | | |
| Task Force 2 | Aubrey Aday/Frank Auza(T) | 2 | N | ICP 0700 | ICP 1900 | | |
| Rawlins Eng 393 T6 E-543 | Adam George | 3 | N | ICP 0700 | ICP 1900 | | |
| Smokey Mtn WAT2 E-526 | Maron Bargeron | 1 | N | ICP 0700 | ICP 1900 | | |
| T&Y WAT1 E-499 | Anthony Blake | 1 | N | ICP 0700 | ICP 1900 | | |
| BLM Eng 612 T6 E-119 | Arcenio Solano | 3 | N | ICP 0700 | ICP 1900 | | |
| Red Rock Eng 5 T4 E-564 | Brian Hodges | 3 | N | ICP 0700 | ICP 1900 | | |
| McClain WAT2 E-521 | Ernest Taylor | 1 | N | ICP 0700 | ICP 1900 | | |
| | | | | | | | |
| | | | | | | | |
| Medic 2 | Israel Estares | 1 | N | ICP 0700 | ICP 1900 | | |
| 7. Control Operations Mop-up fire edge along Chesser Island Road. Be prepared to continue fire operations as directed by operations. | | | | | | | |
| 8. Special Instructions Branch 2 firing operations on Chesser Island will be coordinated by Branch 2. Divisions G,H and I to be briefed by Branch prior to burn-out operations. | | | | | | | |
| 9. Division/Group Communication Summary | | | | | | | |
| Function | Frequency | System | Channel | Function | Frequency | System | Channel |
| Command | Rx: 164.7750 Tx: 163.1500 Tone 123.0 | King NIFC | 12 | Air to Ground | 170.0000 | King NIFC | 13 |
| Tactical Div/Group | 168.600 | King NIFC | 3 | Air to Ground Bucket | 169.150 | King NIFC | 8 |
| Prepared by (Resource Unit Leader) /s/ Gary Esposito (T) | | Approved by (Planning Section Chief) /s/ Paul Summerfelt | | Date 05/30/2007 | | Time 2200 | |

| | | | | | | | |
|---|--|--|---------------|---------------------------------|------------------|--------------|---------|
| DIVISION ASSIGNMENT LIST | | 1. Branch 2 Allen Mitchell/Carl Schwope (T) Chris Wilcox-Night | | 2. Division/Group H-I | | | |
| 3. Incident Name Big Turnaround Complex – East Zone | | 4. Operational Period Date: 05/31/2007 Time: 0700 - 1900 | | | | | |
| 5. Operations Personnel | | | | | | | |
| Operations Chief Curtis Heaton Todd Richards(T) | | Division/Group Supervisor Lance Elmore | | | | | |
| 6. Resources Assigned this Period | | | | | | | |
| Strike Team/Task Force/ Resource Designator | Leader | Number Persons | Trans. Needed | Drop Off PT./Time | Pick Up PT./Time | | |
| Firing Boss | Rocky Chesser | 1 | N | ICP 0700 | ICP 1900 | | |
| Strike Team 6 | Trey Glineski | 1 | N | ICP 0700 | ICP 1900 | | |
| TPLU E-154 | Tommy Carter | 1 | N | ICP 0700 | ICP 1900 | | |
| TPLU E-155 | Mike Moore | 1 | N | ICP 0700 | ICP 1900 | | |
| DOZB | Aaron Grey | 1 | N | ICP 0700 | ICP 1900 | | |
| SFS Inc DOZ2 E-378 | James Clark | 1 | N | ICP 0700 | ICP 1900 | | |
| SFS Inc DOZ2 E-273 | Brad Lyons | 1 | N | ICP 0700 | ICP 1900 | | |
| Strike Team 2 | Jeff Dion/Kirk Jess (T) | 2 | N | ICP 0700 | ICP 1900 | | |
| Pike 961 T6 E-319 | Jason Chappell | 3 | N | ICP 0700 | ICP 1900 | | |
| RGD Eng T6 E-320 | Jon Brewer | 3 | N | ICP 0700 | ICP 1900 | | |
| Engine 9503 T6 E-535 | Greg Painter | 3 | N | ICP 0700 | ICP 1900 | | |
| Wildland Fire Service T6 E-24 | Paul Catlett | 2 | N | ICP 0700 | ICP 1900 | | |
| | | | | | | | |
| | | | | | | | |
| Medic 7 | Shane Powers | 1 | N | ICP 0700 | ICP 1900 | | |
| | | | | | | | |
| | | | | | | | |
| | | | | | | | |
| | | | | | | | |
| | | | | | | | |
| | | | | | | | |
| | | | | | | | |
| | | | | | | | |
| 7. Control Operations Mop-up & hold. Burn-out any interior pockets as needed. | | | | | | | |
| 8. Special Instructions Branch 2 firing operations on Chesser Island will be coordinated by Branch 2. Divisions G,H and I to be briefed by Branch prior to burn-out operations. | | | | | | | |
| 9. Division/Group Communication Summary | | | | | | | |
| Function | Frequency | System | Channel | Function | Frequency | System | Channel |
| Command | Rx: 164.7750 Tx: 163.1500 Tone 123.0 | King NIFC | 12 | Air to Ground | 170.0000 | King NIFC | 13 |
| Tactical Div/Group | 168.6000 | King NIFC | 3 | Air to Ground | 169.150 | King NIFC | 8 |
| Prepared by (Resource Unit Leader) /s/ Gary Esposito (T) | | Approved by (Planning Section Chief) /s/ Paul Summerfelt | | Date 05/30/2007 | | Time 2200 | |

| | | | | | | | |
|--|---|--|----------------------|---|------------------|--------------|---------|
| DIVISION ASSIGNMENT LIST | | 1. Branch 2 Allen Mitchell/Carl Schwope (T) Chris Wilcox-Night | | 2. Division/Group Holding Group | | | |
| 3. Incident Name Big Turnaround Complex – East Zone | | 4. Operational Period Date: 05/31/2007 Time: 1200 - 2400 | | | | | |
| 5. Operations Personnel | | | | | | | |
| Operations Chief | Curtis Heaton Todd Richards(T) | Division/Group Supervisor | Charley Burns | | | | |
| 6. Resources Assigned this Period | | | | | | | |
| Strike Team/Task Force/ Resource Designator | Leader | Number Persons | Trans. Needed | Drop Off PT./Time | Pick Up PT./Time | | |
| Tipton & Young WT2 E-16 | Mark Hudgins | 1 | N | ICP 1200 | ICP 2400 | | |
| Strike Team 1 | Todd Welker Brian Sumpter (T) | 2 | N | ICP 1200 | ICP 2400 | | |
| Langley Eng T6 E-17 | Shawn Langley | 2 | N | ICP 1200 | ICP 2400 | | |
| Cranes Wildfire T6 E-18 | Don Crane | 2 | N | ICP 1200 | ICP 2400 | | |
| Smokey Mt Eng 1. T6 E-53 | Matt Scroggs | 2 | N | ICP 1200 | ICP 2400 | | |
| Wildland Fire Service T6 E-23 | Trixie Smith | 2 | N | ICP 1200 | ICP 2400 | | |
| Strike Team 7 | Ron Jablonski | 1 | N | ICP 1200 | ICP 2400 | | |
| DOZB | Buzz Williams | 1 | N | ICP 1200 | ICP 2400 | | |
| Tipton & Young JD750 E-11 | Jimmy Zimmerman | 1 | N | ICP 1200 | ICP 2400 | | |
| Tipton & Young JD750 E-9 | Billy Chapman | 1 | N | ICP 1200 | ICP 2400 | | |
| | | | | | | | |
| | | | | | | | |
| Medic 4 | Dave Luna | 1 | N | ICP 1200 | ICP 2400 | | |
| | | | | | | | |
| | | | | | | | |
| | | | | | | | |
| | | | | | | | |
| | | | | | | | |
| 7. Control Operations Receive specific assignment from ops @1200 hrs. Continue to patrol & mop-up 30'. Be prepared to continue firing operations as directed by Branch. | | | | | | | |
| 8. Special Instructions Branch 2 firing operations on Chesser Island will be coordinated by Branch 2. | | | | | | | |
| 9. Division/Group Communication Summary | | | | | | | |
| Function | Frequency | System | Channel | Function | Frequency | System | Channel |
| Command | Rx: 164.5750 Tx: 163.1500 Tone 206.5 | King NIFC | 9 | Air to Ground | 170.0000 | King NIFC | 13 |
| Tactical Div/Group | 168.0500 | King NIFC | 1 | Air to Ground Bucket | 169.150 | King NIFC | 8 |
| Prepared by (Resource Unit Leader) /s/ Gary Esposito (T) | | Approved by (Planning Section Chief) /s/ Paul Summerfelt | | Date 05/30/2007 | | Time 2130 | |

| | | | | | | | |
|---|--|--|-------------------|--|------------------|--------------|---------|
| DIVISION ASSIGNMENT LIST | | 1. Branch 2 Bill Bryant-Day Chris Wilcox-Night | | 2. Division/Group Southern Group | | | |
| 3. Incident Name Big Turnaround Complex – East Zone | | 4. Operational Period Date: 05/31/2007 Time: 1200 - 2400 | | | | | |
| 5. Operations Personnel | | | | | | | |
| Operations Chief | Curtis Heaton Todd Richards (T) | Division/Group Supervisor | Duane Tewa | | | | |
| 6. Resources Assigned this Period | | | | | | | |
| Strike Team/Task Force/ Resource Designator | Leader | Number Persons | Trans. Needed | Drop Off PT./Time | Pick Up PT./Time | | |
| Task Force 10 | Steve Biggs | 1 | N | ICP 1200 | ICP 2400 | | |
| Red Rock T6 E-286 | George Brown | 2 | N | ICP 1200 | ICP 2400 | | |
| Red Rock T6 E-287 | Murphy | 3 | N | ICP 1200 | ICP 2400 | | |
| Red Rock T6 E-288 | Benoy | 2 | N | ICP 1200 | ICP 2400 | | |
| Red Rock T6 E-289 | Stevensen | 2 | N | ICP 1200 | ICP 2400 | | |
| DOZB | Terrance Gallegos | 1 | N | ICP 1200 | ICP 2400 | | |
| Orange Springs TPL2 E-173 | Hugh Matchett | 1 | N | ICP 1200 | ICP 2400 | | |
| WAT3 E-390 | Robert Field | 1 | N | ICP 1200 | ICP 2400 | | |
| DOZB | Bryan Daunt | 1 | N | ICP 1200 | ICP 2400 | | |
| DOZ2 T&Y JD750 E-10 | Cleo Simon | 1 | N | ICP 1200 | ICP 2400 | | |
| | | | | | | | |
| | | | | | | | |
| Medic 6 | Randy Chavelier | 1 | N | ICP 1200 | ICP 2400 | | |
| | | | | | | | |
| | | | | | | | |
| 7. Control Operations Assist Branch 1&2 as needed. Patrol & mop-up 30'in. Support Branch 2 with burn-out & holding operations in Division G/Chesser Island. | | | | | | | |
| 8. Special Instructions Work with night operations to develop contingency firing plan. Logging operation support will be coordinated through incident communication to provide suppression support for Divisions A-F. | | | | | | | |
| 9. Division/Group Communication Summary | | | | | | | |
| Function | Frequency | System | Channel | Function | Frequency | System | Channel |
| Command | Rx: 164.5750 Tx: 163.1500 Tone 206.5 | King NIFC | 9 | Air to Ground | 170.0000 | King NIFC | 13 |
| Tactical Div/Group | 168.2000 | King NIFC | 2 | Air to Ground Bucket | 169.150 | King NIFC | 8 |
| Prepared by (Resource Unit Leader) /s/ Gary Esposito(T) | | Approved by (Planning Section Chief) /s/ Paul Summerfelt | | Date 05/30/2007 | | Time 2130 | |

| | | | | | | | |
|---|---|--|---------------|---|------------------|--------------|---------|
| DIVISION ASSIGNMENT LIST | | 1. Branch/Night Chris Wilcox | | 2. Division/Group Contingency Group | | | |
| 3. Incident Name Big Turnaround Complex – East Zone | | 4. Operational Period Date: 05/31/2007 Time: 1200 - 2400 | | | | | |
| 5. Operations Personnel | | | | | | | |
| Operations Chief | Curtis Heaton Todd Richards(T) | Division/Group Supervisor | | Jayson Coil | | | |
| 6. Resources Assigned this Period | | | | | | | |
| Strike Team/Task Force/ Resource Designator | Leader | Number Persons | Trans. Needed | Drop Off PT./Time | Pick Up PT./Time | | |
| Task Force 6 | Jeff Ayers | 1 | N | ICP 1200 | ICP 2400 | | |
| Attack One Fire T6 E-19 | Richard Taylor | 2 | N | ICP 1200 | ICP 2400 | | |
| Attack One Fire T6 E-20 | Hank Knight | 2 | N | ICP 1200 | ICP 2400 | | |
| TN CNF 602 T6 E-54 | Tim Wharton | 3 | N | ICP 1200 | ICP 2400 | | |
| Task Force 13 | Candice Dolbier | 1 | N | ICP 1200 | ICP 2400 | | |
| Rock Hill Eng. 5 T4 E-65 | Brad Peterson | 3 | N | ICP 1200 | ICP 2400 | | |
| FCDM Inc. Eng. T6 E-14 | Robert Rivera | 2 | N | ICP 1200 | ICP 2400 | | |
| DOZB | Richard Wallmow | 1 | N | ICP 1200 | ICP 2400 | | |
| Abernathy DZ2 E-110 | Ron Chambers | 1 | N | ICP 1200 | ICP 2400 | | |
| Orange Springs TPL2 E-174 | Ricky Powell | 1 | N | ICP 1200 | ICP 2400 | | |
| WAT2 T&Y E-148 | Jerry Hunnicutt | 1 | N | ICP 1200 | ICP 2400 | | |
| | | | | | | | |
| | | | | | | | |
| Medic 5 | Dan Goldstein | 1 | N | ICP 1200 | ICP 2400 | | |
| | | | | | | | |
| | | | | | | | |
| 7. Control Operations Prepare to support burn-out operations. Assist Division G through swing operational period. Assist Branch 1&2 as needed. | | | | | | | |
| 8. Special Instructions Logging operations support will be coordinated through Incident communications to provide IA support for Divisions A-F. | | | | | | | |
| 9. Division/Group Communication Summary | | | | | | | |
| Function | Frequency | System | Channel | Function | Frequency | System | Channel |
| Command | Rx: 164.5750 Tx: 163.1500 Tone 206.5 | King NIFC | 9 | Air to Ground | 170.0000 | King NIFC | 13 |
| Tactical Div/Group | 169.9000 | King NIFC | 4 | Air to Ground Bucket | 169.150 | King NIFC | 8 |
| Prepared by (Resource Unit Leader) /s/ Gary Esposito (T) | | Approved by (Planning Section Chief) /s/ Paul Summerfelt | | Date 05/30/2007 | | Time 2130 | |

| | | | | | | | | | |
|--|--|--|------------------------------------|--|--|----------------------|---|---|--|
| AIR OPERATIONS SUMMARY | | PREPARED BY: Alex Stone | | | PREPARED DATE/TIME: 05/30/2007 1925 | | | | |
| 1. INCIDENT NAME: Big Turnaround Complex | | 2. OPERATIONAL PERIOD: | | | START TIME: | END TIME: | SUNRISE: | SUNSET: | |
| | | 05/31/07 | | | 0900 | 2000 | 0626 0626 | 2026 (Folkston) 2028 (Waycross) | |
| 3. REMARKS (Safety Notes, Hazards, Air Operations Special Equipment, etc.): Be Alert to Media Aircraft Over Fire Be Alert to High Winds and Heavy Smoke Helibases Located At Okefenokee NWR, Waycross, and Davis Helibase (Folkston, Ga.) Aviation Break at Florida Hwy. # 2 Maintain ½ mile initial call up (Lifeflight Helicopter) Located At Jacksonville, Fla. 1-800-223-4878 (Shands Hospital) | | | | | 4. MED EVAC A/C: Life Flight | | 5. TFR: 7/1820-Ga Radius: Rectangle Altitude: 3000 MSL NW Corner: Lat: 31-09-00 N Long: 82-38-50 W SE Corner: Lat: 30-15-00 N Long: 82-02-27 W | | |
| 6. PERSONNEL | | Phone | 7. FREQUENCIES | AM | FM | 8. FIXED-WING | | # Avail / Type/ Make-Model / FAA N# / Base(s) | |
| AOBD: Alex Stone | | Primary 520-991-7871 | AIR/AIR FW: | 122.575 East 123.1250 West 122.925 State | | Air Tankers | | 2 Av. I P2V T-10, T-43 LCQ 3 Av. I P3 T-20, T-21' T-22, OCF | |
| ATGS: Tom Dorigan 90K West J. Land 79N West Ed Encinas 3UV East Dan Eckstein 02K East | | 479-857-9663 520-954-2358 928-595-1479 | AIR/AIR RW: | 122.575 East 123.1250 West 122.925 State | | Lead Planes | | 1 Av. LP(ASM) B-58 LCQ 1 Av. (ASM) B-2 OCF | |
| HLCO: | | | AIR/GROUND: Bucket Air/ Ground: | 170.000 East 169.150 East 167.950 West Tone 110.9 | | Base FAX #: | | 1 AV LP(ASM) B-4-9 LCQ 1 AV LP L-1-9 LCQ 1 Av LP(ASM) L-2-1 LCQ 1 Av (ASM) B-7 OCF | |
| ASGS: Bob Skeen | | 505-660-4521 | COMMAND: | | | ATGS Aircraft | | (1) 90K ----Beech Baron---- East (2) 3UV---- Aero Commander---- East (3) 02K---- Beach Baron---- West (4) 79N---- Cessna 340---- West | |
| HEBM: Zoni Anzalone (Pogo) HEBM Dave Langley (Waycross) HEBM: Melvin Tate (Davis) | | 505-240-3649 | COMMAND RPT | Rx: Tx: | | Other: | | (1) Flight Following With Pogo Helibase or Waycross Helibase (2) Initial Attack Aircraft For State Cessna 182's and CH-47 and UH-60's (3) Initial Attack For Okefenokee is N5738Y (Okee 6) (4) APPROVED HELISPOTS: Refer to Okefenokee NWR Dipsite Map | |
| Helibase Phones: Pogo Davis Waycross | | 912-496-4415 912-496-3765 912-218-8937 | DECK FREQ: | 168.350 | | | | | |
| | | | TOLC FREQ: | | | | | | |
| | | | | | | | | | |

9. AIRCRAFT ASSIGNED (Use Additional Sheets As Necessary)

| EAST ZONE AIRCRAFT | | | | | | | WEST ZONE AIRCRAFT | | | | | | |
|--------------------|-----|----------------|----------|-------|-------|------------------------------|--------------------|-----|---------------------------|----------|-------|-------|--|
| FAA N# | TY | MAKE/MODEL | BASE | AVAIL | START | REMARKS | FAA N# | TY | MAKE/MODEL | BASE | AVAIL | START | REMARKS |
| N5BH | I | Sikorsky S-70 | Davis | 0900 | 0930 | Bucket Drops | N/A | I | UH -60 Georgia NG | Waycross | 0900 | 0930 | Bucket Drops Initial Attack For State |
| N4503E (HT-763) | I | Sikorsky S-61 | Davis | 0900 | 0930 | Bucket Drops | N/A | I | UH -60 Georgia NG | Waycross | 0900 | 0930 | Bucket Drops Initial Attack For State |
| N526MW | I | Kaman | Davis | 0900 | 0930 | Bucket Drops | Chopper 7 | III | Bell 407 Georgia Forestry | Waycross | 0900 | 0930 | Recon / Admin For State Bucket Drops as Needed |
| N161KA | I | Kaman | Davis | 0900 | 0930 | Bucket Drops | 90K | I | Beech Baron | Waycross | 0900 | 0930 | Aerial Supervision |
| N5738Y (Okee 6) | III | Bell 206 B-3 | Pogo | 0830 | 0900 | Recon / Admin PSD Operations | 79N | I | Cessna 340 | Waycross | 0900 | 0930 | Aerial Supervision |
| N5843 | III | Bell 206 L-3 | Pogo | 0830 | 0900 | Recon / Admin Bucket Drops | Various | | Cessna 182's | Waycross | 0900 | 0930 | Aerial Detection and Supervision For State |
| 3UV | | Aero Commander | Waycross | 0900 | 0930 | Aerial Supervision | | | | | | | |
| 02K | | Beech Baron | Waycross | 0900 | 0930 | Aerial Supervision | | | | | | | |
| | | | | | | | | | | | | | |
| | | | | | | | | | | | | | |
| | | | | | | | | | | | | | |

10. TASK/MISSION/ASSIGNMENT (Type/Function includes: Air Tactical, Retardant, Recon, Personnel Transport, Water Dropping, S&R, etc.)

| TYPE/FUNCTION | NAME OF PERSONNEL OR CARGO (if applicable) OR INSTRUCTIONS FOR TACTICAL AIRCRAFT | MISSION START | FLY FROM | FLY TO |
|----------------------------|--|---------------|------------------|------------------------|
| Type II Helicopter | Bucket Support For Line Personnel, Logistical Support | 0900 | Helibase | Fire and return |
| Type III Helicopter | Bucket Support / GIS Mapping / Recons as requested | 0900 | Helibase | Fire and return |
| Type I Helicopter | Bucket Support for Line Personnel, Initial Attack and Burn out Operations. | 0930 | Helibase | Fire and return |
| Air Attack Platforms | Aerial Supervision | 0930 | Waycross Airport | Fire and return |
| State Detection Fixed Wing | Aerial Detection and Initial Attack For New Fires | 0930 | Waycross Airport | Fire Patrol and Return |

APPROVED BY: /s/ Alex Stone

DATE/TIME: 05-29-2007 / 1925

SAFETY MESSAGE

INCIDENT: BIG TURNAROUND COMPLEX

DATE: May 31, 2007

TIME: 0700-2400

Major Hazards and Risks:

TO DATE- We have experienced two backing accidents- neither driver was using a spotter even though one was available. Avoid backing situations whenever possible. If you have to back up use a spotter if someone is nearby or riding with you. If you are alone, before you backup, get out and do a 360 degree walk around of your vehicle. Identify the hazards prior to backing up.

TO DATE- We have experienced three cases of dehydration. Monitor your hydration level by noting the color of your urine. If your urine is a dark color drink a lot. If it is yellow drink some. If it is clear you are doing a good job of maintaining you hydration level. Throw in a sports drink every now and then.

Symptoms and prognosis of dehydration

Symptoms may include headaches similar to what is experienced during a hangover, a sudden episode of visual snow, decreased blood pressure (hypotension), and dizziness or fainting when standing up due to orthostatic hypotension. Untreated dehydration generally results in delirium, unconsciousness, and in extreme cases death.

Dehydration symptoms generally become noticeable after 2% of one's normal water volume has been lost. Initially, one experiences thirst and discomfort, possibly along with loss of appetite and dry skin. This can be followed by constipation. Athletes may suffer a loss of performance of up to 50%, and experience flushing, low endurance, rapid heart rates, elevated body temperatures, and rapid onset of fatigue.

Symptoms of mild dehydration include thirst, decreased urine volume, abnormally dark urine, unexplained tiredness, headache, dry mouth, and dizziness when standing due to orthostatic hypotension.

The symptoms become increasingly severe with greater water loss. One's heart and respiration rates begin to increase to compensate for decreased plasma volume and blood pressure, while body temperature may rise because of decreased sweating. Around 5% to 6% water loss, one may become groggy or sleepy, experience headaches or nausea, and may feel tingling in one's limbs (paresthesia). With 10% to 15% fluid loss, muscles may become spastic, skin may shrivel and wrinkle, vision may dim, urination will be greatly reduced and may become painful, and delirium may begin. Losses greater than 15% are usually fatal. ^[2]

REMEMBER THE BASICS – THEY CAN SAVE YOUR LIFE

- 10 Standard Fire Orders
- 18 Situations That Shout Watch Out
- LCES

IMT Safety Officers: Bruce Malloy, Dave Wolf

| INCIDENT RADIO COMMUNICATIONS PLAN | | INCIDENT NAME | DATE/TIME PREPARED | | OPERATIONAL PERIOD | | |
|------------------------------------|---|---|---------------------------|----------------|----------------------------------|----------------|--|
| | | BIG TURNAROUND COMPLEX EAST ZONE | 5/30/2007 1800 | | DATE 5/31/2007 TIME 0700-2400 | | |
| CH No. | CH NAME | ASSIGNMENT | RX FREQ WIDE NARROW | RX TONE NAC | TX FREQ WIDE NARROW | TX TONE NAC | MODE DIGITAL D ANALOG A MULTI M |
| 1 | TAC 1 | Holding Group | 168.0500 N | | 168.0500 N | | |
| 2 | TAC 2 | Southern Group | 168.2000 N | | 168.2000 N | | |
| 3 | TAC 3 | Div A/B, Div. C-F, Div. G, Div H/I, Div J, Div. KM | 168.6000 N | | 168.6000 N | | |
| 4 | TAC 4 | Contingency Group Coordination TAC to other incidents. Channel 10 on Sweat farm and West Zone, Channel 5 on Florida Bugaboo | 169.9000 N | | 169.9000 N | | |
| 5 | TAC 5 REPEATER | Southern Branch I | 167.1000 N | | 169.7500 N | | |
| 6 | TAC 6 REPEATER | Branch 2 Repeater Northern Branch I Repeater | 168.1000 N | | 170.4500 N | | |
| 7 | State Mutual Aid | Structural groups to local engines | 154.2800 W | | 154.2800 W | | |
| 8 | Air-Ground | Bucket Work | 169.1500N | | 169.1500N | | |
| 9 | OKR Waycross (linked to 10 & 11) | Command Repeater | 164.5750 N | | 163.1500 N | 206.5 | |
| 10 | OKR Stephen Foster) Linked to 9 & 11 | Command Repeater | 167.1250 N | | 163.1500 N | 156.7 | |
| 11 | OKR Admin Site (Linked to 9 & !0) | Command Repeater | 164.6250 N | | 163.1500 N | 103.5 | |
| 12 | OKR Eddy Look Out (Not Linked) | Command Repeater TAC for Div J-M | 164.7750 N | | 163.1500 N | 123.0 | |
| 13 | AIR-GROUND | Big Turnaround Air | 170.0000 N | | 170.0000 N | | |
| 14 | AIR GUARD | Emergency contact or redirect with incident aircraft | 168.6250 N | | 168.6250 N | 110.9 | |
| 15 | unassigned | | | | | | |
| 16 | AIR GUARD | Emergency contact or redirect with incident aircraft | 168.6250 N | | 168.6250 N | 110.9 | |

PREPARED BY: Windy Berghofer COML

REMARKS

Don't sit on the microphone. Put it on the hanger or clip where it won't get pushed accidentally.

| | | | | |
|--------------------------------|---|------------------------------------|---------------------------------|--|
| ICS-206 MEDICAL PLAN | 1. Incident Name Big Turnaround Complex | 2. Date Prepared 5/30/07 | 3. Time Prepared 1800 | 4. Operational Period DAY/SWING SHIFTS 5/31/07 |
|--------------------------------|---|------------------------------------|---------------------------------|--|

5. Incident Medical Aid Station

| Medical Aid Stations | Location | | EMT-P | No |
|------------------------------------|--------------------------|---|----------|----|
| Medical Unit Big Turnaround | ICP | 904-955-0022 / 928-606-2393 / 520-560-2742 | X | |
| Medic 1 Koile/Wheaton | Div A/B | 0700-1900 | X | |
| Medic 2 Estares | Div G/H | 0700-1900 | X | |
| Medic 3 Nunez | Div J/M | 0700-1900 | X | |
| Medic 4 Luna | Holding Group | 1200-2400 | X | |
| Medic 5 Goldstein | Contingency Group | 1200-2400 | X | |
| Medic 6 Chevalier | Southern Group | 1200-2400 | X | |
| Medic 7 Powers | Div I | 0700-1900 | X | |
| Medic 8 Nelson | Div C/F | 0700-1900 | X | |

6. Transportation

A. Ambulance Services

| Name | Address | Phone | Paramedics | |
|--|------------------------------------|--------------------------------------|------------|----|
| | | | Yes | No |
| Rescue One | ICP | 928-606-2393 904-955-0022 | X | |
| Ware County EMS | Waycross Georgia | 912-287-4335 | X | |
| Charlton Memorial EMS | 1203 N Third St Folkston Ga | 912-496-2121 | X | |
| Trauma One (Air Ambulance) | Jacksonville | 800-223-4878 | X | |
| Baptist Life Flight (Air Ambulance) | Jacksonville | 877-870-7779 | X | |

7. Hospitals

| Name | Address | Travel Time | | Phone | Helipad | | Burn Center | |
|--|--|-------------------|--------------------|---|----------|----------|-------------|----------|
| | | Air | Grnd | | Yes | No | Yes | No |
| Charlton Memorial | 1203 N 3rd St Folkston N30°50.80 W82°00.10 | 10 min | 20 min. | 912-496-2531 | X | | | X |
| Satilla Regional (Northside of swamp) | 410 Darling Ave Waycross Ga N31°13.56 W82°21.058 | 15 min | 30 min | 912-283-3030 | X | | | X |
| Shands Hospital (Jax) Level 1 trauma center | Jacksonville, FL N 30' 20.97' W 81' 39.92' | 30 min | 1.5 hrs | 904-244-0411 | X | | | X |
| Shands Hospital Burn Center | Gainesville Fl N29°38.33 W082°20.73 OPS – 123.02 | 45 min | 2.5 hrs | 352-265-0200 352-265-0222 904-244-0411 | X | | X | |
| Family Practice Associates Clinic | 1001 N Third St Folkston, Ga | | 15 min | 912-496-4478 | | X | | X |

8. Medical Emergency Procedures

Medical emergencies will be reported to the Division Supervisor. The Division Supervisor will assume command and call for the closest line medic, and resources in the division that are EMT qualified. The Division Supervisor will notify communications by radio or cell phone (Big Turnaround ICP 912-496-2111). Communications to notify MEDL @ 904-955-0022 / 928-606-2393 / 520-560-2742.

The report should include type of illness/injury and exact location of the incident. Communications will clear the air for emergency traffic only and will request key personnel to report to communications. If an air medical helicopter is used within the fire perimeter, communications should notify the air operations director and helibase.

After hours emergencies in Kingsland and/or Folkston: Call 911, then call communications @ 912-496-2111. Communications will call MEDL and designated paramedics will be routed to the scene to facilitate transportation needs.

| | |
|--|--|
| 9. Prepared by (Medical Unit Leader) Nathan Becker / Jesus Hernandez | 10. Reviewed by (Safety Officer) Dave Wolf |
|--|--|

INCIDENT EMERGENCY PLAN (IEP)

The goal of this Incident Emergency Plan (IEP) is to provide the guidelines necessary to Locate, Triage, Extricate, Treat and Transport accident Patients. The Division/Group Supervisor will initially oversee the emergency. Radio communication will be on the "Command Frequency". Names of injured or deceased individuals should not be given over the radio. Deceased individuals and their equipment are not to be moved, except to accomplish rescue work or to protect the health and safety of others. It is expected this organization will come from resources assigned within the Division or nearest adjoining forces.

DIVISION/GROUP SUPERVISOR

- Conduct Size-up of the Incident (Nature of Accident, Number/Type of Resources, Location)
- Coordinate "Line EMT" response to the accident (Utilize Closest EMT's).
- Begin "TRIAGE"
- Determine and initiate treatment and transportation needs
- Evaluate special needs (Law Enforcement, Heavy Rescue, Haz Mat)
- Coordinate with Air Attack for Air-Medical transportation needs
- Preserve the scene for accident investigation

MEDICAL GROUP SUPERVISOR (This position will be filled, only if needed)

- Supervise TRIAGE, Treatment and Transportation Unit Leaders.
- Place orders through Communications for ground ambulance, medical personnel, as needed
- Ensure proper security and traffic control.

TRIAGE UNIT LEADER (This position will be filled, only if needed)

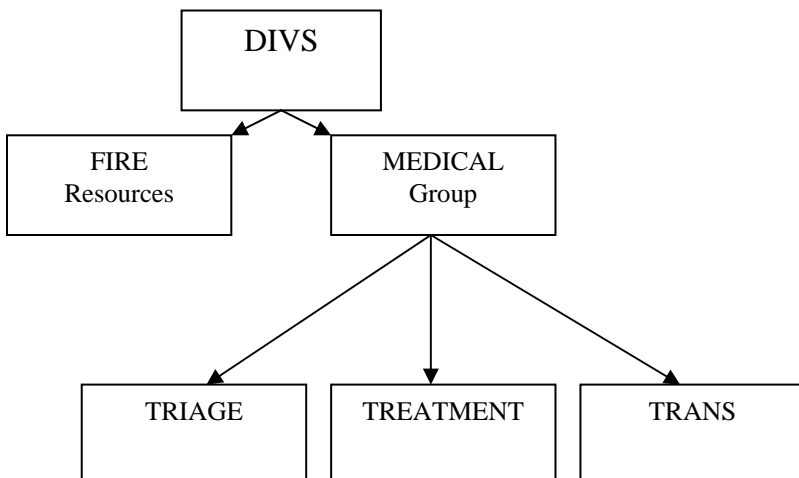
- Locate and TRIAGE all patients and relays information to Medical Group Supervisor.
- Ensure that Airway, Breathing and Circulation stabilization of patients is addressed during TRIAGE.
- Coordinate with Treatment Unit Leader for patient stabilization, extrication, and movement to treatment area.
- Utilize the "START" TRIAGE system.

TREATMENT UNIT LEADER (This position will be filled, only if needed)

- Establishes Immediate, Delayed and Minor treatment areas.
- Direct treatment and stabilization of Patients.
- Prioritize Patients for transport.
- Request medical personnel and supplies, as needed.
- Ensure continual TRIAGE of patients in treatment area.
- Coordinate with TRIAGE Unit leader for delivery of patients to the treatment area.
- Coordinate with the Transportation Unit Leader for delivery of patients to ambulances.
- Ensure documentation of patient conditions and treatments on TRIAGE tags.

TRANSPORTATION UNIT LEADER (This position will be filled, only if needed)

- Coordinate all patient transportation to medical facilities, air and ground.
- Establish communication with hospitals receiving patients.
- Coordinate with Treatment Unit Leader to determine number and category of patients.
- Designate ambulance/helicopter loading areas.
- Determine mode (air/ground) of patient transportation.
- Ensure patients information and destination is recorded.



- MINOR: Walking Wounded
- DELAYED: **CAN** Follow Simple Commands
- IMMEDIATE: Respirations have been restored
Respirations above 30
Radial Pulse Absent
Capillary Refill > 2 seconds
CAN NOT Follow Simple Command
- FATALITY: No Respirations after head tilt

BIG TURNAROUND COMPLEX – EAST ZONE

| | |
|----------------|--------------|
| Communications | 912-496-2111 |
| Medical | 912-496-4359 |
| Ordering | 912-496-4369 |
| Ordering | 912-496-4710 |
| Demob | 912-496-4173 |
| Finance | 912-496-4177 |
| Finance | 912-496-4102 |
| Finance Fax | 912-496-7536 |
| Operations | 912-496-4132 |
| FBAN | 912-496-4175 |
| Information | 912-496-4176 |
| Ground Support | 912-496-4368 |
| Pogo HB | 912-496-4415 |
| Davis HB | 912-496 3765 |

RESTAURANTS

| | | SUN | MON-THURS | FRI-SAT |
|------------------|------------------------------|------------|------------|------------|
| KINGSLAND | APPLEBEE'S | 1 100-2000 | 1 100-2300 | 1 100-0100 |
| | CRACKER BARREL | 0600-2000 | 0600-2000 | 0600-2300 |
| | Quizno's | 24 HRS | | |
| | RUBY TUESDAY'S | 1 100-1100 | 1 100-1100 | 1 100-1200 |
| | SHONEY'S | | | |
| | SONNY'S | 1 100-2100 | 1 100-2100 | 1 100-2130 |
| | WAFFLE HOUSE | 24 HRS | | |
| FOLKSTON | MICHAEL'S DELI | 0630-2100 | 0630-2100 | 0630-2000 |
| | OKEFENOKEE RESTAURANT | CLOSED | 0630-2100 | 0630-2100 |

SIGN IN PROCEDURE

Meals may not exceed per diem rates of B-\$7, L-\$11, D-\$18.

Ticket or sign-in sheet – name, resource #(C, E, or O), fire name. Crew boss may provide manifest for names. All names of crew must be recorded for meals consumed. If recording on ticket, use front where possible.

Use govt. travel card if you have one.

Govt. will not pay for alcohol, movies or phones.

If you are on per diem, deduct any meals you sign for, or which are provided by the govt., from your travel.

The McDonalds in Folkston is offering a firefighter discount.

