



# Georgia Bay Complex Kneeknocker Fire Roundabout Fire

## *Incident Action Plan*

*Sunday*

**May 20, 2007**

**GA-GAS-070005**



**GEMA**

<b>INCIDENT OBJECTIVES</b>	1. Incident Name <b>Georgia Bay Complex</b>	2. Date Prepared 5/19/07	3. Time Prepared 1830									
4. Operational Period 05/19/2007 Day and Swing Shift												
5. General Control Objectives For The Incident (Include Alternatives) <ol style="list-style-type: none"> <li>1. Conduct all operations in a safe, cost effective, and efficient manner, and do so in an atmosphere free of discriminatory or harassing remarks or actions.</li> <li>2. Manage fires within the Georgia Bay Complex, as assigned by the Georgia Forestry Commission, by providing relief for local resources, identifying and mitigating hazards, establishing LCES, and following 2 to 1 work to rest guidelines.</li> <li>3. Maintain communications and information flow with resources and Georgia Forestry Commission Protection staff with timely and accurate situational updates.</li> <li>4. Provide accurate cost accountability and documentation of expenditures for the duration of the incident.</li> <li>5. Develop and maintain coordination with local fire departments, local EOC directors, the Georgia Emergency Management Agency, the Southwestern Area Team IMT, the Southern Area Blue Team IMT, GOAL, and private industry.</li> <li>6. Keep the Bugaboo fire east of State Hwy 177, east of State Hwy 94 from Fargo to the Florida state line.</li> <li>7. Keep the Sweat Farm Fire south of the town of Waycross and Highway 122, west of Highway 1, north and west of swamp road, and east of the town of Manor.</li> <li>8. Keep the Kneeknocker and Roundabout fires within the current established fire lines / perimeters.</li> </ol>												
6. Weather Forecast For Period <p>...RED FLAG WARNING THIS AFTERNOON FOR CRITICAL RELATIVE HUMIDITY VALUES...</p> <p>Sunny and dry. Highs 84 to 88. Minimum RH's 20-24%, except 16 to 20% near fire perimeters. Northeast winds 3 to 6 mph, becoming east 6 to 10 mph with gusts to 14 mph around midday, then shifting southeast late.</p>												
7. General Safety Message <p>Keep all resources informed on strategies, tactics, changes, and identified hazards. Everyone should be informed on existing and expected conditions. Give driving your full attention. Remember to have LCES in place prior to engagement on IA.</p>												
8. ATTACHEMENTS (X IF ATTACHED) <table style="width: 100%; border: none;"> <tr> <td style="width: 33%;"><input checked="" type="checkbox"/> Organization List - ICS 203</td> <td style="width: 33%;"><input checked="" type="checkbox"/> Medical Plan - ICS 206</td> <td style="width: 33%;"><input checked="" type="checkbox"/> Tailgate Briefing Form (safety, weather, fire behavior)</td> </tr> <tr> <td><input checked="" type="checkbox"/> Division Assignment Lists - ICS 204</td> <td><input checked="" type="checkbox"/> Incident Map - separate</td> <td><input type="checkbox"/> _____</td> </tr> <tr> <td><input checked="" type="checkbox"/> Communications Plan - ICS 205</td> <td><input type="checkbox"/> Traffic Plan</td> <td><input type="checkbox"/> _____</td> </tr> </table>				<input checked="" type="checkbox"/> Organization List - ICS 203	<input checked="" type="checkbox"/> Medical Plan - ICS 206	<input checked="" type="checkbox"/> Tailgate Briefing Form (safety, weather, fire behavior)	<input checked="" type="checkbox"/> Division Assignment Lists - ICS 204	<input checked="" type="checkbox"/> Incident Map - separate	<input type="checkbox"/> _____	<input checked="" type="checkbox"/> Communications Plan - ICS 205	<input type="checkbox"/> Traffic Plan	<input type="checkbox"/> _____
<input checked="" type="checkbox"/> Organization List - ICS 203	<input checked="" type="checkbox"/> Medical Plan - ICS 206	<input checked="" type="checkbox"/> Tailgate Briefing Form (safety, weather, fire behavior)										
<input checked="" type="checkbox"/> Division Assignment Lists - ICS 204	<input checked="" type="checkbox"/> Incident Map - separate	<input type="checkbox"/> _____										
<input checked="" type="checkbox"/> Communications Plan - ICS 205	<input type="checkbox"/> Traffic Plan	<input type="checkbox"/> _____										
9. Prepared By (Planning Section Chief)  <b>/S/ Les Rogers</b>	10. Approved By (Incident Commander)  <b>/S/ Paul Hannemann</b>											

ORGANIZATION ASSIGNMENT LIST		9. Operations Section		
1. Incident Name		Chief (Field)		
Georgia Bay Complex Kneeknocker and Roundabout		Chief (Plans) David Abernathy		
2. Date	3. Time	a. Branch I - Divisions/Groups		
May 19, 2007	1700	Operations BD Steve Miller		
		Technical Specialist Barry Chesser		
4. Operational Period				
May 19, 2007 0800-2000 Day Shift		Division/Group Kneeknocker Steve Abbott		
5. Incident Commander and Staff				
Incident Commander	Paul Hannemann			
Deputy				
Safety Officer	J. Dombrowske, P. Boucher			
Camp IC (MUCS)	Matt Plagenz			
6. Agency Representatives				
Agency	Name			
GFC District 8	Frank Sorrells			
GFC District 10	Willard Fell			
GFC Protection Dept.	Alan Dozier			
GEMA	Alan Robinson	b. Branch II - Divisions/Groups		
		Operations BD Steve Miller		
7. Planning Section				
		Technical Specialist Paul Gillis /Earl Roberson		
Chief				
		Division/Group A/D Brent McCarty		
Resource Unit	Bill Widrig	Division/Group B/C Lucky Jones		
Situation Unit		Division/Group		
		Division/Group		
Status Check-in	Kathy Arnoldus	Breakout Task Force 1 TF1 Earl Roberson		
Computer Tech	Gary Valliers	c. Branch III - Divisions/Groups		
Documentation Unit	Patty Johnson	Branch Director		
Fire Investigator		Deputy		
Demob Unit	Sandra Wilkins	Division/Group		
GIS		Division/Group		
Infrared Interpreter		Division/Group		
DNR Driver	Billy G. Reed (Daily Rotation)	Division/Group		
8. Logistics Section		d. Air Operations Branch		
Chief		Air Operations BD P.J. Pearson		
Deputy		Air Attack Supervisor		
Supply Unit	Wayne Brasher	Air Support Supervisor		
Ground Support	Dick McManus			
Facilities Unit	Robert Elliott			
Food Unit		GFC Air Operations Mike Leverette		
Base Camp Manager	Richard Sheets	Air Tanker Coordinator Rick Gicla		
Ordering Manager	Chris Woodcock	10. Finance Section		
Equipment Manager	Jorge Cervantes	Chief Robin Nimura		
Communications Unit		Deputy Jeremy Kent		
Technical Specialist		Time Unit Leader P. Stephens / S. Wicka / V. Lowther (T)		
Driver	James Griffin 1*18*15695	Equipment Time Recorder Junnetta Myers		
Admin. Asst.	Kim Cohen (Kneeknocker)	Personnel Timer Recorder Rosita Martin		
Admin. Asst.	Jessica Giddens (Roundabout)	Procurement Steven Teves		
		Cost Unit Roger Siemers		
		Comp/Claims Larry Lee / Eileen Crouse		
		Prepared by (Resource Unit Leader)		
		Bill Widrig		

DIVISION ASSIGNMENT LIST				1. Branch I		2. Division/Group Kneeknocker	
3. Incident Name <b>Georgia Bay Complex Kneeknocker</b>				4. Operational Period Date: <b>05/20/2007</b> Time: <b>0800-2000</b>			
5. Operations Personnel							
Operations Branch Director		<b>Steve Miller 1*18*11625</b>		Technical Specialist (RA)		<b>Barry Chesser</b>	
Group Supervisor		<b>Steve Abbott</b>		Safety Officer		<b>Paul Boucher</b>	
6. Resources Assigned This Period							
Strike Team/Task Force/ Resource Designator	Leader	Number Persons	Trans Needed	Drop Off PT/Time	Pick Up PT/Time		
<b>STEN</b>	<b>Tom Crews (STEN)</b>	(5/24) 1	No	Fireline 0900	Fireline1900		
Colorado Type 6 ENG San Isabel NF E-9	Alex Rudney (ENGB) Robert Dickamore Justin M. Campbell	(5/24) 3	No	Fireline 0900	Fireline1900		
Colorado Type 6 ENG Upper Pine River Brush 66 E-14	Paul Black (ENG) Paul Valdez	(5/25) 2	No	Fireline 0900	Fireline1900		
West Virginia Type 6 ENG E-7	Brandon Harden (ENGB) William Snodgrass Kyle Garris	(5/25) 3	No	Fireline 0900	Fireline1900		
Arizona Type 6 ENG Lakeside Brush 212 E-12	Corey Valichnac (ENGB) Jason Todora Jake Valichnac	(5/25) 3	No	Fireline 0900	Fireline1900		
<b>Tractor Plow Task Force</b>	<b>John Godwin</b> E-5020 Seminole-32	(5/23) 1	No	Fireline 0900	Fireline1900		
JD 650 DOZ4 Brooks 62/72 E-5031	Ronald Bryant	(5/23) 1	No	Fireline 0900	Fireline1900		
JD 650 DOZ4 Early 61/71 E-5023	Aarron Reichard	(5/23) 1	No	Fireline 0900	Fireline1900		
JD 650 DOZ4 Grady 60/70 E-5021	Mark Bryant	(5/23) 1	No	Fireline 0900	Fireline1900		
<b>Breakout</b>							
<b>North Carolina Task Force</b>	<b>Micheal Huges(TFLD)</b> ENG# 760 T6 E-5190	(5/27) 1	No	Kneeknocker Staging 0900	Kneeknocker Staging 2000		
JD 750 DOZ2 E-5194	Jason O'neal	(5/27) 1	No	Kneeknocker Staging 0900	Kneeknocker Staging 2000		
CAT D5H DOZ3 E-5195	Bobby Phelps	(5/27) 1	No	Kneeknocker Staging 0900	Kneeknocker Staging 2000		
CAT D5H DOZ3 E-5193	James Scott	(5/27) 1	No	Kneeknocker Staging 0900	Kneeknocker Staging 2000		
Engine Type 6 ENG# 740 E-5191	Ferrell Banks	(5/27) 1	No	Kneeknocker Staging 0900	Kneeknocker Staging 2000		
Engine Type 6 ENG# 761 E-5198	Christopher Smith	(5/27) 1	No	Kneeknocker Staging 0900	Kneeknocker Staging 2000		
Engine Type 6 ENG# 1356 E-5199	Chris Holyfield	(5/27) 1	No	Kneeknocker Staging 0900	Kneeknocker Staging 2000		
NC Service Truck w/Mechanic E-5192	Jeff McPherson	(5/27) 1	No	Kneeknocker Staging 0900	Kneeknocker Staging 2000		
<b>MUC Task Force 1 &amp; 2</b>	<b>Garry Atteberry 1*18*627</b>	<b>50</b>	<b>NO</b>	<b>Fireline 0900</b>	<b>Fireline 1900</b>		
7. Operations <b>Hold line, improve mop up, and monitor fire activity for Kneeknocker</b>							
8. Special Instructions <b>For Air Support use the following UTM Coordinates: Kneeknocker E 04014, N 34558</b> <b>For structure protection call 911!</b>							
9. Division/Group Communication Summary							
Function	Frequency	System	Channel	Function	Frequency	System	Channel
Command				Logistics			
Tactical Div/Group	<b>168.200</b>	<b>Tactical</b>	<b>10</b>	Air to Ground	<b>169.200</b>		<b>14</b>
Prepared By (Resource Unit Leader)		Approved By (Planning Sect. Ch.)		Date		Time	
<b>Bill Widrig</b>		<b>/s/ Les Rogers</b>		<b>05/19/07</b>		<b>1730</b>	

<b>DIVISION ASSIGNMENT LIST</b>			1. Branch <b>II</b>		2. Division/Group <b>Roundabout A/D</b>		
3. Incident Name <b>Roundabout Fire</b>			4. Operational Period Date: <b>05/20/2007</b> Time: <b>0800- 2000</b>				
5. Operations Personnel							
Ops Branch Director	<b>Steve Millier 1*18*11625</b>		Division/Group Supervisor	<b>Brent McCarty 1*18*12585 (5/20)</b>			
Technical Specialist (RA)	<b>Paul Gillis</b>		Safety Officer	<b>Jerry Dombrowske</b>			
6. Resources Assigned this Period							
Strike Team/Task Force/ Resource Designator	Leader	Number Persons	Trans. Needed	Drop Off PT./Time	Pick Up PT./Time		
<b>Arkansas T-3 TP TF</b>	<b>Walter Jones (STPL) SO-24160 1*18*9200</b>	<b>(5-31) 1</b>	<b>No</b>	<b>Fireline 0900</b>	<b>Fireline 2000</b>		
<b>JD 650 DOZ4 SO-22831</b>	<b>D. Pope/ R. Lane</b>	<b>(5-31) 2</b>	<b>No</b>	<b>Fireline 0900</b>	<b>Fireline 2000</b>		
<b>CAT D-5G DOZ3 SO-23568</b>	<b>J. Johnston/ T. Phillips</b>	<b>(5-31) 2</b>	<b>No</b>	<b>Fireline 0900</b>	<b>Fireline 2000</b>		
<b>Cat D-5 LGP DOZ3 SO-23562</b>	<b>J. Hoopengartner/ J. Williams</b>	<b>(5-31) 2</b>	<b>No</b>	<b>Fireline 0900</b>	<b>Fireline 2000</b>		
<b>Coffee Co. Water Tend.</b>	<b>Ralph Jowers</b>	<b>1</b>	<b>No</b>	<b>Fireline 0900</b>	<b>Fireline 2000</b>		
<b>Wildland Fire Engine T3 E-2055 Gun-runner</b>	<b>Heath Rowan (5/19) Reggie Simons (5/22)</b>	<b>2</b>	<b>No</b>	<b>Fireline 0900</b>	<b>Fireline 2000</b>		
<b>Atkinson Co. Road Dept. Motor-Grader</b>	<b>Jessie Stanfield Joey Anderson</b>	<b>2</b>	<b>No</b>	<b>Fireline 0900</b>	<b>Fireline 2000</b>		
<b>Williams TF</b>	<b>Tommy Williams (TFLD)</b>	<b>(5-30) 1</b>	<b>No</b>	<b>Fireline 0900</b>	<b>Fireline 2000</b>		
Twiggs 86 T-6 ENG	Larry Rowland Bledsoe	(5-30) 2	No	Fireline 0900	Fireline 2000		
Peach 86 Type 6 Engine	Randell Frazier Kevin Meeks	(5/22) 2	No	Fireline 0900	Fireline 2000		
<b>Donald Bennett</b>	<b>Water Handling Specialist</b>	<b>1</b>	<b>No</b>	<b>Fireline 0900</b>	<b>Fireline 2000</b>		
7. Control Operations <b>Hold containment lines, improve mop up into edge of bays, address hot spots, and monitor fire activity.</b>							
8. Special Instructions <b>Do not drive on canal roads due to under burning and falling trees. Be aware of snags and other hazards. For Air Support use the following UTM Coordinates 315206 East 3463551 North. For Structure Protection Support/Engines Call 911.</b>							
9. Division/Group Communication Summary							
Function	Frequency	System	Channel	Function	Frequency	System	Channel
Command		King NIFC		Logistics		King NIFC	
Tactical Div/Group	<b>168.775</b>	King NIFC	<b>USFS 9 Tactical 8</b>	Air to Ground	<b>169.200</b>	King NIFC	<b>14 (Air to ground)</b>
Prepared by (Resource Unit Ldr.) <b>Bill Widrig</b>		Approved by (Planning Sect. Ch.) <b>/s/ Les Rogers</b>		Date <b>5/19/2007</b>		Time <b>2000</b>	

<b>DIVISION ASSIGNMENT LIST</b>			1. Branch <b>II</b>		2. Division/Group <b>Roundabout B/C</b>		
3. Incident Name <b>Roundabout Fire</b>			4. Operational Period Date: <b>5/20/2007</b> Time: <b>0800 - 2000</b>				
5. Operations Personnel							
Ops Branch Director		<b>Steve Millier 1*18*11625</b>		Division/Group Supervisor		<b>Lucky Jones 1*18* 5198</b>	
Technical Specialist (RA)		<b>Paul Gillis</b>		Safety Officer		<b>Jerry Dombrovske</b>	
6. Resources Assigned this Period							
Strike Team/Task Force/ Resource Designator		Leader		Number Persons	Trans. Needed	Drop Off PT./Time	Pick Up PT./Time
<b>Kelley Task Force</b>		<b>Danny Kelley (TFLD) Turner 31 1*18*1415</b>		<b>(5-20) 1</b>	<b>No</b>	<b>Fireline 0900</b>	<b>Fireline 2000</b>
<b>CAT D-5N DOZ3 Brooks-70</b>		<b>Darren Martin</b>		<b>(5-20) 1</b>	<b>No</b>	<b>Fireline 0900</b>	<b>Fireline 2000</b>
<b>JD 650H DOZ4 Mitchell-72</b>		<b>Chris Cross</b>		<b>(5-20) 1</b>	<b>No</b>	<b>Fireline 0900</b>	<b>Fireline 2000</b>
<b>JD 650G DOZ4 Thomas-72</b>		<b>Todd Milam</b>		<b>(5-20)1</b>	<b>No</b>	<b>Fireline 0900</b>	<b>Fireline 2000</b>
<b>Single Resource Engine</b>							
<b>Wyoming Type 6 ENG BLM E-8</b>		<b>Kevin Moreno Jim Gates Bob Evans</b>		<b>(5/25) 3</b>	<b>No</b>	<b>Fireline 0900</b>	<b>Fireline 2000</b>
<b>Oklahoma Type 6 ENG BIA# 8661 E-5</b>		<b>Jerry Fletcher Ron Fields Clyde Crosnoe</b>		<b>(5/26) 3</b>	<b>No</b>	<b>Fireline 0900</b>	<b>Fireline 2000</b>
<b>JD Track Hoe</b>		<b>Quinton Dillingham</b>		<b>1</b>	<b>No</b>	<b>Fireline 0900</b>	<b>Fireline 2000</b>
<b>DOT 5000 gal. Water Tender</b>		<b>Chad Sowell</b>		<b>1</b>	<b>No</b>	<b>Fireline 0900</b>	<b>Fireline 2000</b>
7. Control Operations <b>Hold containment lines, improve mop up into edge of bays, address hot spots, and monitor fire activity.</b>							
8. Special Instructions <b>Do not drive on canal roads due to under burning and falling trees. Be aware of snags and other hazards. For Air Support use the following UTM Coordinates 315206 East 3463551 North. For Structure Protection Support/Engines Call 911.</b>							
9. Division/Group Communication Summary							
Function	Frequency	System	Channel	Function	Frequency	System	Channel
Command		King NIFC		Logistics		King NIFC	
Tactical Div/Group	<b>168.775</b>	King NIFC	<b>USFS 9 Tactical 8</b>	Air to Ground	<b>169.200</b>	King NIFC	<b>14 (air to ground)</b>
Prepared by (Resource Unit Ldr.) <b>Bill Widrig</b>		Approved by (Planning Sect. Ch.) <b>/s/ Les Rogers</b>			Date <b>5/19/2007</b>		Time <b>2000</b>

<b>DIVISION ASSIGNMENT LIST</b>			1. Branch <b>II</b>		2. Division/Group <b>Roundabout Breakout</b>		
3. Incident Name <b>Roundabout Fire</b>			4. Operational Period Date: <b>5/20/2007</b> Time: <b>0800– 2000</b>				
5. Operations Personnel							
Ops Branch Director		<b>Steve Miller</b>		Division/Group Supervisor			
Technical Specialist (RA)				Safety Officer		<b>Jerry Dombrowske</b>	
6. Resources Assigned this Period							
Strike Team/Task Force/ Resource Designator		Leader		Number Persons	Trans. Needed	Drop Off PT./Time	Pick Up PT./Time
TP Task Force 1		Earl Roberson		1	No	Roundabout Staging / 0900	Roundabout Staging / 2000
CAT D-4H DOZ3 Berrien-72		Josh Rowan		1	No	Roundabout Staging / 0900	Roundabout Staging / 2000
JD 750C DOZ2 Ware -71		Hilton Bennett		1	No	Roundabout Staging / 0900	Roundabout Staging / 2000
JD 750C DOZ2 Echols-70		Greame Treloar		1	No	Roundabout Staging / 0900	Roundabout Staging / 2000
7. Control Operations <b>Task Force 1 : Respond to and suppress breakouts and spot overs on the Roundabout fire. Stage at Roundabout Staging area and wait dispatch.</b> <b>Breakout Task Force 1 should be readily available for suppressing breakouts on the Roundabout Fire within 3 minutes after dispatch.</b>							
8. Special Instructions  <b>For Air Support use the following UTM Coordinates 315206 East 3463551 North</b> <b>For Structure Protection Support/Engines for Roundabout fire Call 911 : Also notify David Moore EMA IC (Linc# 1*11*4801) or Diane May GEMA Coordinator (Linc# 1*11*4818)</b>							
9. Division/Group Communication Summary							
Function	Frequency	System	Channel	Function	Frequency	System	Channel
Command		King NIFC		Logistics		King NIFC	
Tactical Div/Group		King NIFC		Air to Ground		King NIFC	
Prepared by (Resource Unit Ldr.) <b>Bill Widrig</b>			Approved by (Planning Sect. Ch.) <b>/s/ Les Rogers</b>			Date <b>5/19/2007</b>	Time <b>2000</b>

NAME	POSITION	PHONE NUMBERS	FAX NUMBERS
Macon Extended Dispatch		478-751-3533	
Greg Strenkowski (Macon Extended)		478-751-3492	
Alan Dozier (GFC Protection)		478-751-3490	
Waycross—OPS & Air OPS		912-285-6039	912-285-6014
<b>Kneeknocker ICP</b>	<b>Linc 1*18*11583</b>	<b>912-462-5185</b>	<b>912-462-5189</b>
<b>Roundabout ICP</b>	<b>Linc 1*18*1001</b>	<b>912-422-3140</b>	<b>912-422-6260</b>
<b>Nahunta ICP</b>	<b>Linc 1*18*11583</b>		
Roger Browning	MUCO OSC	478-361-1962	Linc 1*18*169
<b>OTHER AGENCIES</b>		<b>PHONE #</b>	<b>SOUTHERN LINK</b>
GFC Waycross District Office	Jeremy Kent	912-287-4915	
Brantley County Fire Coordinator	Ken Lee	912-218-2012	Linc 1*44*1081
Nahunta FD Fire Chief	Button Lee	912-717-3330 / 904-699-1619	Linc 1*25*323
EMA / 911 Director	Billy Lartz	912-282-8730 / 912-217-1638	Linc 1*11*2001
Brantley County Sheriff	Robert Thomas	912-614-1658	Linc 1*25*1130
DNR ENGB, Terry Trowbridge	T. Trowbridge	(C) 912-223-2815	
DNR ENOP	Sam Williams	229-212-0124	
Atkinson EMA IC	David Moore		Linc 1*11*4801
Atkinson GEMA Coordinator	Diane May		Linc 1*11*4818
<b>COMMAND</b>		<b>912-462-5185</b>	
Paul Hannemann	IC	912-285-6046	Linc 1*18*1178
Paul Boucher (Kneeknocker)	SOF	505-574-2064	
Jerry Dombrowske (Roundabout)	SOF	912-218-9400	Linc 1*18*10120
<b>PLANS</b>		<b>912-462-5185</b>	
Bill Widrig	RESL	912-462-5185	
James Kent	SITL		Linc 1*46*2535
Sandra Wilkins	DMOB	478-550-2988	
Kathy Arnoldus	SCKN	478-550-2985	
<b>LOGISTICS</b>		<b>912-462-5287</b>	
	Dispatch	912-462-5611	
	Driver		Linc 1*18*15695
	DISP	912-422-3140	Linc 1*18*1001
	SPLD	912-218-9576	Linc 1*18*9200
Robert "Bob" Elliott	FACL	912-218-9574	Linc 1*18*5342
	BCM		Linc 1*18*4677
<b>OPERATIONS Kneeknocker</b>		<b>912-462-5185</b>	
Barry Chesser (Kneeknocker)	Technical Specialist	912-218-6552	Linc 1*18*4166
Steve Abbott	DIVS	770-550-1868	Linc 1*18*1628
Earl Roberson	Technical Specialist	912-218-8344	Linc 1*18*4279
John Godwin	DIVS		Linc 1*18*3213
Tom Crews	STEN	404-535-2226	Linc 1*18*11725
Michael Hughes	TFLD	912-218-9510	Linc 1*18*11266
<b>OPERATIONS Roundabout</b>		<b>912-422-3140</b>	
Paul Gillis	Technical Specialist		Linc 1*18*20684
Steve Miller	OPD		Linc 1*18*11625
Jamie Smith	DIVS		Linc 1*18*4755
Mickey Tucker	TFLD		Linc 1*46*20684
Danny Kelly	STPL		Linc 1*18*14115
Donald Bennett	Water Handling		Linc 1*18*12983
Brent McCarty			Linc 1*18*12585
Lucky Jones			Linc 1*18*5198
<b>FINANCE</b>		<b>478-550-2982 or 2995</b>	



**☐ WEATHER FORECAST**

**FORECAST NO:** 31

**NAME OF FIRE:** Georgia Bay Complex

**PREDICTION FOR:** Day & Night Ops

**UNIT:** Georgia Forestry Commission

**SHIFT DATE:** Sat 05/20/07

**SIGNED:** John Quagliariello

**TIME AND DATE** 1800

**Incident Meteorologist**

**FORECAST ISSUED:** 05/19/07

**WEATHER DISCUSSION:** High pressure will continue to build over the complex into early next week, keeping very dry conditions in place.

The **main concern is:**

1. Red Flag Warning this afternoon due to critical relative humidity values.

**WEATHER FORECAST DAY SHIFT SUNDAY:** (See table for specific incident forecasts )

**...RED FLAG WARNING THIS AFTERNOON FOR CRITICAL RELATIVE HUMIDITY VALUES...**

**WEATHER:** Sunny and dry.

**MAX TEMPERATURES:** 84 to 88 (24 hour trend ~ 4 degrees higher)

**MIN HUMIDITY:** 20-24%, except 16 to 20% near fire perimeters (24 hour trend ~ 2 percent lower)

**20 FT WINDS:** Northeast 3 to 6 mph, becoming east 6 to 10 mph with gusts to 14 mph around midday, then shifting southeast late.

**STABILITY/INVERSION:** Inversion around 300 ft dissipating by 0900. Mixing heights around 7000 ft. Dispersion index around 40. Haines Index 5.

	<b>Sweat Farm Rd.</b>	<b>Bugaboo Scrub II</b>	<b>Roundabout</b>	<b>Knee-Knocker</b>
<i>Max Temperature:</i>	85-87°	85-87°	86-88°	83-85°
<i>Min Humidity:</i>	20-24%	20-24%	18-22%	23-27%
<i>Seabreeze Passage:</i>	1800	1800	1900	1730

**WEATHER FORECAST NIGHT SHIFT SUNDAY NIGHT:**

**WEATHER:** Clear and cool.

**MIN TEMPERATURES:** 50 to 54.

**MAX HUMIDITY:** Recovery around 70 percent near the fire perimeter and around 90 percent elsewhere.

**20 FT WINDS:** Southeast 4 to 8 mph early in the evening, then becoming light and variable.

**STABILITY/INVERSION:** Inversion around 300 ft beginning to develop after 2100. Dispersion index around 4.

**OUTLOOK FOR MONDAY:**

Mostly Sunny and dry. High temperatures 85 to 89. Minimum RH values 22 to 26%. Light and variable winds, becoming east-southeast 4 to 8 mph around midday.

**EXTENDED...TUESDAY THROUGH FRIDAY:**

Tuesday: Partly cloudy. Lows in the upper 50s. Highs in the mid 80s. East winds around 10 mph.

Wednesday: Partly cloudy with isolated showers and thunderstorms. Lows in the lower 60s. Highs in the lower 80s. East winds 10 to 15 mph.

Thursday: Partly cloudy with isolated showers and thunderstorms. Lows in the lower 60s. Highs in the mid 80s. East winds 10 to 15 mph.

Friday: Partly cloudy. Lows in the lower 60s. Highs in the mid 80s. East winds around 10 mph.

## TAILGATE BRIEFING SHEET 2 OF 2

 SAFETY MESSAGE

Incident:

Georgia Bay Complex

Date:

May 20, 2007

Time:

Day &amp; Night Shift

**Major Hazards and Risks:**

- Fire Behavior
- Snags
- Dehydration
- Fatigue
- "Critters"
- Driving/Travel

**NARRATIVE:**

Be alert to an increase in fire behavior with the predicted weather. We are forecasted to experience lower humidity values which should result in more fire activity. The history of this incident demands that everyone be fully aware of the predicted fire behavior. Maintain LCES at all times!

Snags are also a main concern. Identify and remove, when possible, all hazard trees where fire personnel will be present. If we are unable to remove the hazard, flag the snag and keep personnel a safe distance away. Night operations should be done from control lines and scouted in daylight whenever possible. Do not go interior in snag areas with no or limited visibility!

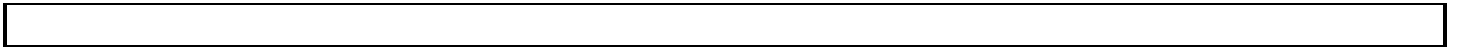
Driving continues to be priority. The best solution to most driving hazards is to simply reduce our speed. Be alert to varied speed limits in and around town and ensure that all incident personnel are in compliance with all traffic laws!

The weather has cooled, but we need to continue to stress hydration. We haven't experienced any dehydration problems. Keep up the good work!

This incident is likely to continue for some time. We have worked some extended shifts and numerous personnel have extended their assignments. Fatigue is an enemy of all firefighters. Take advantage of our accommodations and get quality rest between shifts.

We have several furry and scaled "friends" sharing our work area. Be respectful of their territory and do not agitate the local wildlife. Do not feed the alligators for the same reason that we do not feed bears. Also be aware that the female alligators are extremely protective of their young at this time of the year. Maintain safe distances, they are extremely quick for short distances!

**SAFETY OFFICERS:** Brian Beisel, Ronnie Hamm, Harry Kepler, Steve Snider, Tim Sampson, John Orton, Andy Meadows, Larry Miler, Phil Spor, Pete Stewart, and Rodney Bell.



## Fire Behavior Forecast

<b><u>Forecast No. 31</u></b>	<b><u>Prediction for Day Shift</u></b>
<b><u>Name of Fire: Georgia Bay Complex</u></b>	<b><u>Shift Date: Tuesday May 20, 2007</u></b>
<b><u>Time and Date Forecast Issued</u></b> <b><u>1800 hrs 5/19/2007</u></b>	<b><u>Signed : John Robertson</u></b> <b><u>Fire Behavior Analyst</u></b>

### **Weather Summary (See Detailed Weather Forecast in the IAP):**

A high pressure system with very dry air remains in place over the fires. Northeasterly winds to 6 mph in the morning then east at 10 mph after mid day with gusts to 14 mph. The sea breeze will move winds around to the southeast after about 1800. Max temperature near 88 degrees and RH as low as 16% near the fire and 20% elsewhere. Haines Index 5.

**General Fire Behavior:** Fine dead fuel will drop to 3 to 6% in the afternoon. Dry fine fuels in combination of low live fuel moisture content and winds to 14 mph will create the potential for extreme fire behavior in unburned fuels during the afternoon. Southern rough fuels could reach spread rates of 120 ch/hr with 20 foot flame lengths. Expect surface spread of 10 to 15 ch/hr with 3 to 4 foot flames in swamp shrub fuels and 40 ch/hr during crowning runs. Spotting up to ¼ mile is possible. Peak burning will occur around 1600 and continue until 1900. Spotting up to ¼ mile is possible. Spotting out to 100 yards is possible from shrub or tree torching in re-burns. The probability of ignition is 50% in the shade and near 100% in the sun. The potential for large fire growth is enhanced with the unstable atmosphere.

### **Specific Fire Behavior:**

**Sweat Farm Road:** Re-burn remains the primary concern on this fire. Expect a surface fire in needles and leaves with 5 ch/hr spread and 3 ft flame length with torching in scorched shrubs and trees with associated spotting. A possibility for fire to spread or spot out of the swamp exists, particularly late in the day. If this occurs rapid spread down wind with torching and spotting in the southern rough and young pine plantations. Sea breeze to arrive about 1800.

**Bugaboo Scrub:** Spotting to the west from burn outs as they back to the east is still possible. Expect spread down wind with torching and spotting in the southern rough fuels and young pine plantations. Sea breeze effect after 1800 may increase chance of spotting.

**Kneeknocker:** Re-burn is possible from any hold over fire especially after 1400. Torching in the scorched shrub layer could move into the crowns causing spotting down wind. Wind shift from the east about 1730.

**Roundabout:** Burn out of organic soils will continue. By mid afternoon the potential exists for re-burn in needle cast and shrub fuels. Torching with spotting across lines is possible where flare-ups occur northeast or east of any fireline. East winds expected at 1900.

**Initial Attack:** Ignitions in unburned fuels will be fast to develop after a few hours of sun. Fire spread and spotting will be toward the southwest in the morning and westerly in the afternoon.

**Air Operations:** Inversions will persist until 0900. Smoke will continue to limit visibility.

**Safety:** Dry conditions equate to easier ignition and quicker acceleration of the fire. Pay particular attention wind direction and speed. Any torching will create spot fires down wind. Pay attention to fire in the swamp, post lookouts as needed.

INCIDENT ACTION PLAN SAFETY ANALYSIS										1. Incident Name Georgia Bay Complex		2. Date 5/20/2007		3. Time Day & Night Shift										
LCES* Analysis of Tactical Applications Lookouts Communications Escape routes Safety zones										Other Risk Analysis														
Branch	Indirect Fireline	Burn out Operations	Power lines	Night operations	Frontal Assault	Anchor Points	Extreme Conditions	Reburn Potential	Unburned Area	Insects, snakes	LCES Mitigations						Other Risk Mitigations							
Sweat Farm	1, 3, 4, 5, 7, 10	1, 3, 4, 5, 6, 10, 13	15, 16	1, 7, 11, 14, 19, 22, 34	1, 3, 4, 5, 7, 22, 29	7	1, 6, 7, 8, 10, 24	1, 3, 7, 9, 16	1, 3, 7, 9, 16	1, 3, 5, 7, 24	2	1. Establish & maintain LCES. Report LCES checks twice daily to DIVS on line & staging.						18. Take plenty rest breaks and encourage to drink water NOW through briefings. 19. Watch out for complacency and fatigue. Utilize Fire Departments for structure protection. Tailgate briefings on WUI hazards. 20. Defensive driving will be addressed in all briefings. 21. All personnel must meet the 2:1 work/rest ratio. Line supervisors and Safety will monitor closely.						
							2. Look UP, DOWN and AROUND - Use protective spray with deet on skin (Not on Nomex), permethrin can be used on nomex clothing. Do Not try to catch or kill snakes!						1, 3, 4, 23, 27, 32, 33	12, 20, 26, 28, 31, 33	1, 23, 3, 10, 27	3, 5, 11, 19, 23, 25, 26, 18, 29, 30								
							3. Post experienced Lookouts. Make sure LCES is in place and make known.																	
							4. Use Air Attack as Lookout.																	
Div WA-WM/Fargo	1, 3, 4, 5, 7, 10	1, 3, 4, 5, 6, 7, 10, 13	15, 16	1, 7, 11, 14, 19, 22, 34	1, 3, 4, 5, 7, 22, 29	7	1, 6, 7, 8, 10, 24	1, 3, 7, 9, 16	1, 3, 7, 9, 16	1, 3, 5, 7, 24	2	5. Flag escape routes on right side of escape route facing outward. Create new escape routes as you progress. Maintain LCES at all times.						22. Line Supervisors will provide clear, concise briefings. 23. Recognize, Communicate & Avoid Hazmat situations. 24. Refer to the Evacuation Plan for the ICP. 25. Review Wildland Urban "Watch Out" situations. Pg 11 IRPG						
							6. Post lookout for Snags, Runs, and Spot Fires.						1, 3, 4, 23, 27, 32, 33	12, 20, 26, 28, 31, 33	1, 23, 3, 10, 27									
							7. Use secure anchor points that will not be compromised for observed fire behavior.																	
							8. FBA/Meteorologist develop weather watch system.																	
IA Groups(ICP, Manor, Swi	1, 3, 4, 5, 7, 10	1, 3, 4, 5, 6, 7, 10, 13	15, 16	1, 7, 11, 14, 19, 22, 34	1, 3, 4, 5, 7, 22, 29	7	1, 6, 7, 8, 10, 24	1, 3, 7, 9, 16	1, 3, 7, 9, 16	1, 3, 5, 7, 24	2	9. All Firefighters must review current weather, predicted weather & fire behavior forecast.						26. Ensure Traffic Planning is safe and enforced. Heed Defensive Driving techniques noted in Safety Messages. 27. Avoid trash dumps in line construction & avoid smoke from dumps 28. Relocate staging area when driving conditions warrant. 29. Air Attack and/or lead plane will always be in the air to coordinate aircraft.						
							10. Keep Firefighters informed of any changes in predicted weather, consider at least a two day weather pattern when planning burnout operations.						1, 3, 4, 23, 27, 32, 33	12, 20, 26, 28, 31, 33	1, 23, 3, 10, 27									
							11. Refer to IRPG, pg. 12 on Power Line Hazards.																	
							12. Observe all traffic signals and speed limits.																	
Knee Knecker/Roundabout	1, 3, 4, 5, 7, 10	1, 3, 4, 5, 6, 7, 10, 13	15, 16	1, 7, 11, 14, 19, 22, 34	1, 3, 4, 5, 7, 22, 29	7	1, 6, 7, 8, 10, 24	1, 3, 7, 9, 16	1, 3, 7, 9, 16	1, 3, 5, 7, 24	2	13. Ensure any burnout operations have been clearly communicated to ALL, prior to burning.						30. Personnel on ground will stay out of drop zones. 31. Use spotter when backing vehicle(s). 32. Use bandanna to filter smoke in heavy smoke areas. 33. ALL vehicles and equipment must have lights on when running. Plastic colverts under some roads have burned and are collapsing under heavy loads, DIVS will coordinate which roads transport and tractors will use. GSP (912) 287-6500 : EMA (912) 287-4499. 34. Use blinking lights or glow sticks on back of helmet or backpack to be seen by equipment operators.						
							14. Night Dispatch will be assign for each night operational period.																	
							15. Scout ahead of tractor operations to avoid making contact with power poles and guide wires when tying into roads. Power companies are working in some DIVS, avoid all down lines as they may become charged.						1, 3, 4, 23, 27, 32, 33	12, 20, 26, 28, 31, 33	1, 23, 3, 10, 27									
							16. Review IRPG pg. 75 when thunderstorms are predicted or observed.																	

Prepared by (Name and Position)

ICS 215A Brian Beisel SOF1 (T)





<b>Fargo Helibase—(GolfCourse)</b> N 30 41 27.3 x W 82 34 02.0 <b>Stephen Foster SP (Pocket)</b> N30 47 32.2 x W82 22 39..6						<b>ALL AIRCRAFT Call Air Attack when entering TFR---</b> <b>Waycross Helibase will call Pogo as a back up!!!</b> <b>NOTE NEW HELIBASE LOCATIONS</b> <b>ALL FLIGHTS WILL BE CLEARED WITH AOB</b>
--	--	--	--	--	--	--

**9. HELICOPTERS (Use Additional Sheets As Necessary)**

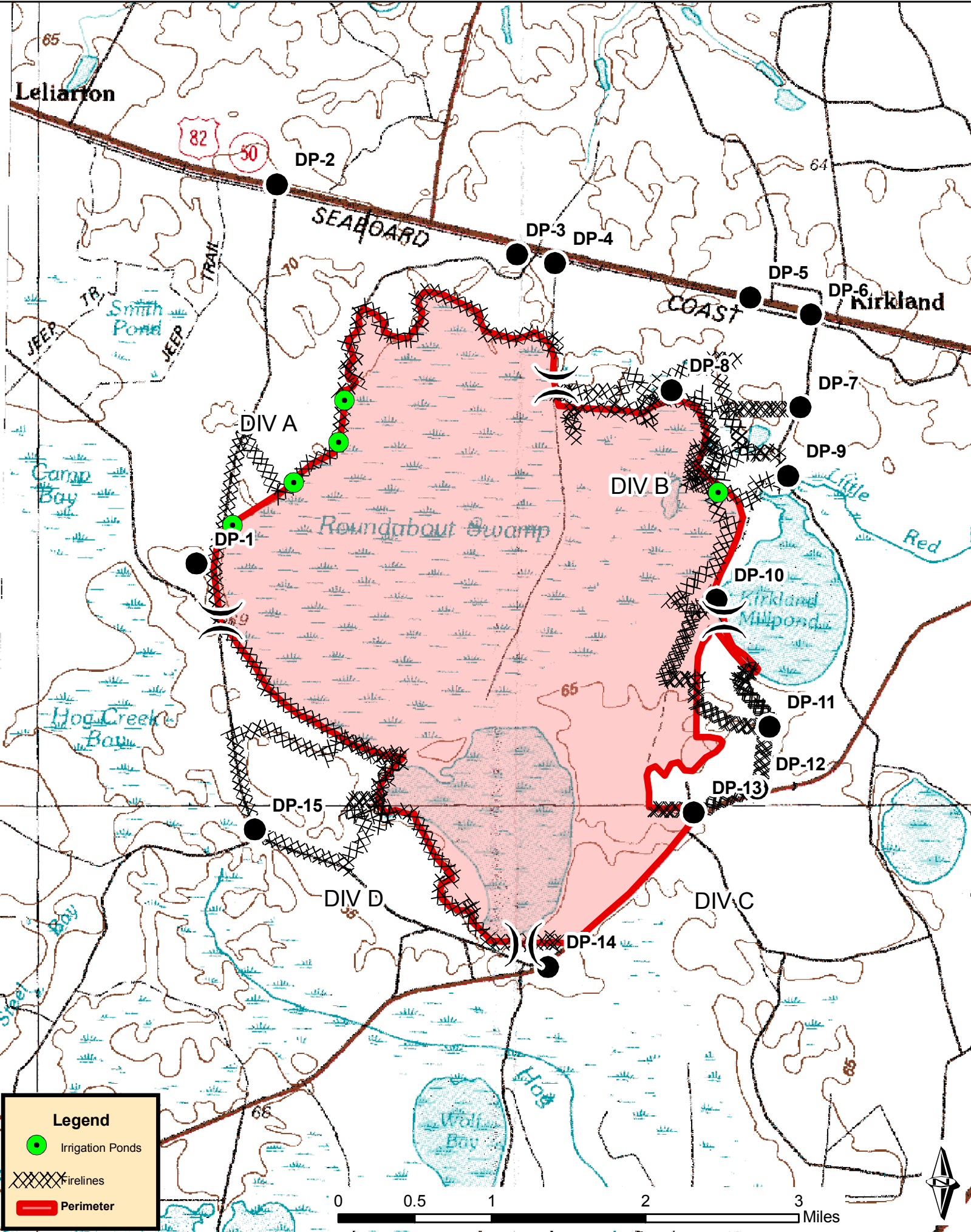
FAA N#	TY	MAKE/MODEL	BASE	AVAIL	START	REMARKS	FAA N#	TY	MAKE/MODEL	BASE	AVAIL	START	REMARKS
N5BH	I	Sikorsky S-70A-27	Pogo	0900	0930	Bucket Drops	N5738Y	III	Bell 206	Pogo	0900	0930	Recon/ Admin/ IA
N4503E	I	Sikorsky S-61N	Pogo	0900	0930	Bucket drops	N12HX	III	Bell 407	Pogo	0900	0930	Admin/ Recon
N15HX	II	Bell 205++	Pogo	0900	0930	Bucket drops	Chopper 7	III	Bell 407	Waycross	0900	0930	State IA-Bucket drops as needed
N17HX II	II	BELL 205++	Pogo	0900	0930	Bucket Drops	90K	I	Baron	Waycross	0900	0930	ATGS
	I	UH-60	Waycross	0900	0930	IA for State	62-Z	I	King Air	Lake City	0800	0930	ATGS
	I	UH-60	Waycross	0900	0930	IA for State							
	I	CH-47	Waycross	0900	0930	IA for State							
01Q	i	Cessna 401	Waycross	0900	0930	ATGS							
		Cessna 182	Waycross	0900	0930	Aerial Detection							

**10. TASK/MISSION/ASSIGNMENT (Type/Function includes: Air Tactical, Retardant, Recon, Personnel Transport, Water Dropping, S&R, etc.)**

TYPE/FUNCTION	NAME OF PERSONNEL OR CARGO (if applicable) OR INSTRUCTIONS FOR TACTICAL AIRCRAFT	MISSION START	FLY FROM	FLY TO
Type II Helicopter	Operation and Logistic Support	0930	Helibase	Fire and Return
Type III Helicopter	Operation and Logistic Support	0930	Helibase	Fire and Return
Type I Helicopter	Operation and Logistic Support	0930	Helibase	Fire and Return
ATGS Platforms	Aerial Supervision of all Aircraft over Incidents	0930	Waycross Airport & Lake City	Fire and Return
State Detection Fixed Wing	Aerial Detection and IA for New Fire Starts	0930	Waycross Airport	Fire and Return



# Roundabout Fire - Atkinson County, GA



**Legend**

- Irrigation Ponds
- Firelines
- Perimeter



# KneeKnocker Fire - Brantley County, GA

