



Georgia Bay Complex Kneeknocker Fire Roundabout Fire

Incident Action Plan

Monday

May 21, 2007

GA-GAS-070005



GEMA

INCIDENT OBJECTIVES	1. Incident Name Georgia Bay Complex	2. Date Prepared 5/20/07	3. Time Prepared 1830									
4. Operational Period 05/21/2007 Day and Swing Shift												
5. General Control Objectives For The Incident (Include Alternatives) <ol style="list-style-type: none"> 1. Conduct all operations in a safe, cost effective, and efficient manner, and do so in an atmosphere free of discriminatory or harassing remarks or actions. 2. Manage fires within the Georgia Bay Complex, as assigned by the Georgia Forestry Commission, by providing relief for local resources, identifying and mitigating hazards, establishing LCES, and following 2 to 1 work to rest guidelines. 3. Maintain communications and information flow with resources and Georgia Forestry Commission Protection staff with timely and accurate situational updates. 4. Provide accurate cost accountability and documentation of expenditures for the duration of the incident. 5. Develop and maintain coordination with local fire departments, local EOC directors, the Georgia Emergency Management Agency, the Southwestern Area Team IMT, the Southern Area Blue Team IMT, GOAL, and private industry. 6. Keep the Bugaboo fire east of State Hwy 177, east of State Hwy 94 from Fargo to the Florida state line. 7. Keep the Sweat Farm Fire south of the town of Waycross and Highway 122, west of Highway 1, north and west of swamp road, and east of the town of Manor. 8. Keep the Kneeknocker and Roundabout fires within the current established fire lines / perimeters. 												
6. Weather Forecast For Period <p style="text-align: center;">...RED FLAG WARNING THIS AFTERNOON FOR CRITICAL RELATIVE HUMIDITY VALUES...</p> WEATHER: Sunny and dry. MAX TEMPERATURES: 86 to 89 (24 hour trend ~ same) MIN HUMIDITY: 20-24%, except 17 to 20% near fire perimeters (24 hour trend ~ same) 20 FT WINDS: Southeast 2 to 5 mph, increasing to 6 to 10 mph around 11 am. Gusting to 14 mph in the afternoon. STABILITY/INVERSION: Inversion up to 400 ft dissipating by 0930. Mixing heights around 6500 ft. Afternoon Dispersion index around 55. Haines Index 5.												
7. General Safety Message <p>Keep all resources informed on strategies, tactics, changes, and identified hazards. Everyone should be informed on existing and expected conditions. Give driving your full attention. Remember to have LCES in place prior to engagement on IA.</p>												
8. ATTACHEMENTS (X IF ATTACHED) <table style="width: 100%; border: none;"> <tr> <td style="width: 33%;"><input checked="" type="checkbox"/> Organization List - ICS 203</td> <td style="width: 33%;"><input checked="" type="checkbox"/> Medical Plan - ICS 206</td> <td style="width: 33%;"><input checked="" type="checkbox"/> Tailgate Briefing Form (safety, weather, fire behavior)</td> </tr> <tr> <td><input checked="" type="checkbox"/> Division Assignment Lists - ICS 204</td> <td><input checked="" type="checkbox"/> Incident Map - separate</td> <td></td> </tr> <tr> <td><input checked="" type="checkbox"/> Communications Plan - ICS 205</td> <td><input type="checkbox"/> Traffic Plan</td> <td><input type="checkbox"/> _____</td> </tr> </table>				<input checked="" type="checkbox"/> Organization List - ICS 203	<input checked="" type="checkbox"/> Medical Plan - ICS 206	<input checked="" type="checkbox"/> Tailgate Briefing Form (safety, weather, fire behavior)	<input checked="" type="checkbox"/> Division Assignment Lists - ICS 204	<input checked="" type="checkbox"/> Incident Map - separate		<input checked="" type="checkbox"/> Communications Plan - ICS 205	<input type="checkbox"/> Traffic Plan	<input type="checkbox"/> _____
<input checked="" type="checkbox"/> Organization List - ICS 203	<input checked="" type="checkbox"/> Medical Plan - ICS 206	<input checked="" type="checkbox"/> Tailgate Briefing Form (safety, weather, fire behavior)										
<input checked="" type="checkbox"/> Division Assignment Lists - ICS 204	<input checked="" type="checkbox"/> Incident Map - separate											
<input checked="" type="checkbox"/> Communications Plan - ICS 205	<input type="checkbox"/> Traffic Plan	<input type="checkbox"/> _____										
9. Prepared By (Planning Section Chief) /S/ Les Rogers	10. Approved By (Incident Commander) /S/ Paul Hannemann											

ORGANIZATION ASSIGNMENT LIST		9. Operations Section	
1. Incident Name		Chief (Field)	
Georgia Bay Complex Kneeknocker and Roundabout		Chief (Plans) David Abernathy	
2. Date		3. Time	
May 20, 2007		1700	
		a. Branch I - Divisions/Groups	
		Operations BD Steve Miller/Brantley McManus	
		Technical Specialist Barry Chesser	
4. Operational Period			
May 21, 2007 0800-2000 Day Shift		Division/Group Kneeknocker Steve Abbott	
5. Incident Commander and Staff			
Incident Commander Paul Hannemann			
Deputy			
Safety Officer J. Dombrowske, P. Boucher			
Camp IC (MUCS) Matt Plagenz			
6. Agency Representatives			
Agency Name			
GFC District 8 Frank Sorrells			
GFC District 10 Willard Fell			
GFC Protection Dept. Alan Dozier			
GEMA Alan Robinson		b. Branch II - Divisions/Groups	
		Operations BD Steve Miller / Brantley McManus	
		Technical Specialist Paul Gillis /Earl Roberson	
7. Planning Section			
Chief Les Rogers		Division/Group A/D Brent McCarty	
Resource Unit Bill Widrig		Division/Group B/C Lucky Jones	
Situation Unit		Division/Group	
		Division/Group	
Status Check-in Kathy Arnoldus		Breakout Task Force 1 TF1 Earl Roberson	
Computer Tech Gary Vallieres		c. Branch III - Divisions/Groups	
Documentation Unit Patty Johnson		Branch Director	
Fire Investigator		Deputy	
Demob Unit Sandra Wilkins		Division/Group	
GIS		Division/Group	
Infrared Interpreter		Division/Group	
		Division/Group	
8. Logistics Section			
Chief		d. Air Operations Branch	
Deputy		Air Operations BD P.J. Pearson	
Supply Unit		Air Attack Supervisor	
Ground Support Dick McManus		Air Support Supervisor	
Facilities Unit Bob Elliott			
Food Unit		GFC Air Operations Mike Leverette	
Base Camp Manager		Air Tanker Coordinator Rick Gicla	
Ordering Manager Chris Woodcock		10. Finance Section	
Equipment Manager		Chief Robin Nimura	
Communications Unit		Deputy Jeramy Kent	
Technical Specialist		Time Unit Leader Serena Wicka/ Vern Lowther (T)	
Driver Mike Gochenour		Equipment Time Recorder Junnetta Myers	
		Personnel Timer Recorder Rosita Martin	
Admin. Asst. Kim Cohen (Kneeknocker)		Prepared by (Resource Unit Leader)	
Admin. Asst. Jessica Giddens (Roundabout)		Bill Widrig	

DIVISION ASSIGNMENT LIST				1. Branch I		2. Division/Group Kneeknocker	
3. Incident Name Georgia Bay Complex Kneeknocker				4. Operational Period Date: 05/21/2007 Time: 0800-2000			
5. Operations Personnel							
Operations Branch Director		Steve Miller /Brantley McManus		Technical Specialist (RA)		Barry Chesser	
Group Supervisor		Steve Abbott		Safety Officer		Paul Boucher	
6. Resources Assigned This Period							
Strike Team/Task Force/ Resource Designator	Leader	Number Persons	Trans Needed	Drop Off PT/Time	Pick Up PT/Time		
STEN	Tom Crews (STEN)	(5/24) 1	No	Fireline 0900	Fireline1900		
Colorado Type 6 ENG San Isabel NF E-9	Alex Rudney (ENGB) Robert Dickamore Justin M. Campbell	(5/24) 3	No	Fireline 0900	Fireline1900		
Colorado Type 6 ENG Upper Pine River Brush 66 E-14	Paul Black (ENG) Paul Valdez	(5/25) 2	No	Fireline 0900	Fireline1900		
West Virginia Type 6 ENG E-7	Brandon Harden (ENGB) William Snodgrass Kyle Garris	(5/25) 3	No	Fireline 0900	Fireline1900		
Arizona Type 6 ENG Lakeside Brush 212 E-12	Corey Valichnac (ENGB) Jason Todora Jake Valichnac	(5/25) 3	No	Fireline 0900	Fireline1900		
Tractor Plow Task Force	John Godwin E-5020 Seminole-32	(5/22) 1	No	Fireline 0900	Fireline1900		
JD 650 DOZ4 Brooks 62/72 E-5031	Ronald Bryant	(5/23) 1	No	Fireline 0900	Fireline1900		
JD 650 DOZ4 Early 61/71 E-5023	Aarron Reichard	(5/23) 1	No	Fireline 0900	Fireline1900		
JD 650 DOZ4 Grady 60/70 E-5021	Mark Bryant	(5/23) 1	No	Fireline 0900	Fireline1900		
Breakout							
North Carolina Task Force	Micheal Huges(TFLD) ENG# 760 T6 E-5190	(5/27) 1	No	Kneeknocker Staging 0900	Kneeknocker Staging 2000		
JD 750 DOZ2 E-5194	Jason O'neal	(5/27) 1	No	Kneeknocker Staging 0900	Kneeknocker Staging 2000		
CAT D5H DOZ3 E-5195	Bobby Phelps	(5/27) 1	No	Kneeknocker Staging 0900	Kneeknocker Staging 2000		
CAT D5H DOZ3 E-5193	James Scott	(5/27) 1	No	Kneeknocker Staging 0900	Kneeknocker Staging 2000		
Engine Type 6 ENG# 740 E-5191	Ferrell Banks	(5/27) 1	No	Kneeknocker Staging 0900	Kneeknocker Staging 2000		
Engine Type 6 ENG# 761 E-5198	Christopher Smith	(5/27) 1	No	Kneeknocker Staging 0900	Kneeknocker Staging 2000		
Engine Type 6 ENG# 1356 E-5199	Chris Holyfield	(5/27) 1	No	Kneeknocker Staging 0900	Kneeknocker Staging 2000		
NC Service Truck w/Mechanic E-5192	Jeff McPherson	(5/27) 1	No	Kneeknocker Staging 0900	Kneeknocker Staging 2000		
MUC Task Force 1 & 2	Garry Atteberry 1*18*627	50	NO	Fireline 0900	Fireline 1900		
7. Operations Hold line, improve mop up, and monitor fire activity for Kneeknocker							
8. Special Instructions For Air Support use the following UTM Coordinates: Kneeknocker E 04014, N 34558 For structure protection call 911!							
9. Division/Group Communication Summary							
Function	Frequency	System	Channel	Function	Frequency	System	Channel
Command				Logistics			
Tactical Div/Group	168.200	Tactical	10	Air to Ground	169.200		14
Prepared By (Resource Unit Leader)		Approved By (Planning Sect. Ch.)		Date		Time	
Bill Widrig		/s/ Les Rogers		05/20/07		1730	

DIVISION ASSIGNMENT LIST				1. Branch II		2. Division/Group Roundabout A/D	
3. Incident Name Roundabout Fire				4. Operational Period Date: 05/21/2007 Time: 0800- 2000			
5. Operations Personnel							
Ops Branch Director		Steve Millier/Brantley McManus		Division/Group Supervisor		Brent McCarty 1*18*12585 (5/20)	
Technical Specialist (RA)		Paul Gillis		Safety Officer		Jerry Dombrowske	
6. Resources Assigned this Period							
Strike Team/Task Force/ Resource Designator		Leader		Number Persons	Trans. Needed	Drop Off PT./Time	Pick Up PT./Time
Arkansas T-3 TP TF		Eric Smith (STPL) 1*18*9200		(6-5) 1	No	Fireline 0900	Fireline 2000
JD 650 DOZ4 SO-22831		D. Pope/ R. Lane		(5-31) 2	No	Fireline 0900	Fireline 2000
CAT D-5G DOZ3 SO-23568		J. Johnston/ T. Phillips		(5-31) 2	No	Fireline 0900	Fireline 2000
Cat D-5 LGP DOZ3 SO-23562		J. Hoopengartner/ J. Williams		(5-31) 2	No	Fireline 0900	Fireline 2000
Coffee Co. Water Tend.		Ralph Jowers		1	No	Fireline 0900	Fireline 2000
Wildland Fire Engine T3 E-2055 Gun-runner		Heath Rowan (5/19) Reggie Simons (5/22)		2	No	Fireline 0900	Fireline 2000
Atkinson Co. Road Dept. Motor-Grader		Jessie Stanfield Joey Anderson		2	No	Fireline 0900	Fireline 2000
Williams TF		Tommy Williams (TFLD)		(5-30) 1	No	Fireline 0900	Fireline 2000
Twiggs 86 T-6 ENG		Larry Rowland Bledsoe		(5-30) 2	No	Fireline 0900	Fireline 2000
Peach 86 Type 6 Engine		Randell Frazier Kevin Meeks		(5/22) 2	No	Fireline 0900	Fireline 2000
Donald Bennett		Water Handling Specialist		1	No	Fireline 0900	Fireline 2000
7. Control Operations Hold containment lines, improve mop up into edge of bays, address hot spots, and monitor fire activity.							
8. Special Instructions Do not drive on canal roads due to under burning and falling trees. Be aware of snags and other hazards. For Air Support use the following UTM Coordinates 315206 East 3463551 North. For Structure Protection Support/Engines Call 911.							
9. Division/Group Communication Summary							
Function	Frequency	System	Channel	Function	Frequency	System	Channel
Command		King NIFC		Logistics		King NIFC	
Tactical Div/Group	168.775	King NIFC	USFS 9 Tactical 8	Air to Ground	169.200	King NIFC	14 (Air to ground)
Prepared by (Resource Unit Ldr.) Bill Widrig		Approved by (Planning Sect. Ch.) /s/ Les Rogers			Date 5/20/2007		Time 2000

DIVISION ASSIGNMENT LIST			1. Branch II		2. Division/Group Roundabout B/C			
3. Incident Name Roundabout Fire			4. Operational Period Date: 5/21/2007 Time: 0800 - 2000					
5. Operations Personnel								
Ops Branch Director		Steve Millier /Brantley McManus		Division/Group Supervisor		Lucky Jones 1*18* 5198		
Technical Specialist (RA)		Paul Gillis		Safety Officer		Jerry Dombrowske		
6. Resources Assigned this Period								
Strike Team/Task Force/ Resource Designator		Leader		Number Persons	Trans. Needed	Drop Off PT./Time	Pick Up PT./Time	
Single Resource Engine								
Wyoming Type 6 ENG BLM E-8		Kevin Moreno Jim Gates Bob Evans		(5/25) 3	No	Fireline 0900	Fireline 2000	
Oklahoma Type 6 ENG BIA# 8661 E-5		Jerry Fletcher Ron Fields Clyde Crosnoe		(5/26) 3	No	Fireline 0900	Fireline 2000	
JD Track Hoe		Quinton Dillingham		1	No	Fireline 0900	Fireline 2000	
DOT 5000 gal. Water Tender		Chad Sowell		1	No	Fireline 0900	Fireline 2000	
7. Control Operations Hold containment lines, improve mop up into edge of bays, address hot spots, and monitor fire activity.								
8. Special Instructions Do not drive on canal roads due to under burning and falling trees. Be aware of snags and other hazards. For Air Support use the following UTM Coordinates 315206 East 3463551 North. For Structure Protection Support/Engines Call 911.								
9. Division/Group Communication Summary								
Function	Frequency	System	Channel	Function	Frequency	System	Channel	
Command		King NIFC		Logistics		King NIFC		
Tactical Div/Group	168.775	King NIFC	USFS 9 Tactical 8	Air to Ground	169.200	King NIFC	14 (air to ground)	
Prepared by (Resource Unit Ldr.) Bill Widrig			Approved by (Planning Sect. Ch.) /s/ Les Rogers			Date 5/20/2007		Time 2000

DIVISION ASSIGNMENT LIST			1. Branch II		2. Division/Group Roundabout Breakout		
3. Incident Name Roundabout Fire			4. Operational Period Date: 5/21/2007 Time: 0800– 2000				
5. Operations Personnel							
Ops Branch Director		Steve Miller/Brantley McManus		Division/Group Supervisor			
Technical Specialist (RA)				Safety Officer		Jerry Dombrowske	
6. Resources Assigned this Period							
Strike Team/Task Force/ Resource Designator	Leader		Number Persons	Trans. Needed	Drop Off PT./Time		Pick Up PT./Time
TP Task Force 1	Earl Roberson		1	No	Roundabout Staging / 0900		Roundabout Staging / 2000
CAT D-4H DOZ3 Berrien-72	Josh Rowan		1	No	Roundabout Staging / 0900		Roundabout Staging / 2000
JD 750C DOZ2 Ware -71	Hilton Bennett		1	No	Roundabout Staging / 0900		Roundabout Staging / 2000
JD 750C DOZ2 Echols-70	Greame Treloar		1	No	Roundabout Staging / 0900		Roundabout Staging / 2000
7. Control Operations Task Force 1 : Respond to and suppress breakouts and spot overs on the Roundabout fire. Stage at Roundabout Staging area and wait dispatch. Breakout Task Force 1 should be readily available for suppressing breakouts on the Roundabout Fire within 3 minutes after dispatch.							
8. Special Instructions For Air Support use the following UTM Coordinates 315206 East 3463551 North For Structure Protection Support/Engines for Roundabout fire Call 911 : Also notify David Moore EMA IC (Linc# 1*11*4801) or Diane May GEMA Coordinator (Linc# 1*11*4818)							
9. Division/Group Communication Summary							
Function	Frequency	System	Channel	Function	Frequency	System	Channel
Command		King NIFC		Logistics		King NIFC	
Tactical Div/Group		King NIFC		Air to Ground		King NIFC	
Prepared by (Resource Unit Ldr.) Bill Widrig		Approved by (Planning Sect. Ch.) /s/ Les Rogers			Date 5/20/2007		Time 2000

NAME	POSITION	PHONE NUMBERS	FAX NUMBERS
Macon Extended Dispatch		478-751-3533	
Greg Strenkowski (Macon Extended)		478-751-3492	
Alan Dozier (GFC Protection)		478-751-3490	
Waycross—OPS & Air OPS		912-285-6039	912-285-6014
Kneeknocker ICP	Linc 1*18*11583	912-462-5185	912-462-5189
Roundabout ICP	Linc 1*18*1001	912-422-3140	912-422-6260
Nahunta ICP	Linc 1*18*11583		
Roger Browning	MUCO OSC	478-361-1962	Linc 1*18*169
OTHER AGENCIES		PHONE #	SOUTHERN LINK
GFC Waycross District Office	Jeremy Kent	912-287-4915	
Brantley County Fire Coordinator	Ken Lee	912-218-2012	Linc 1*44*1081
Nahunta FD Fire Chief	Button Lee	912-717-3330 / 904-699-1619	Linc 1*25*323
EMA / 911 Director	Billy Lartz	912-282-8730 / 912-217-1638	Linc 1*11*2001
Brantley County Sheriff	Robert Thomas	912-614-1658	Linc 1*25*1130
DNR ENGB, Terry Trowbridge	T. Trowbridge	(C) 912-223-2815	
DNR ENOP	Sam Williams	229-212-0124	
Atkinson EMA IC	David Moore		Linc 1*11*4801
Atkinson GEMA Coordinator	Diane May		Linc 1*11*4818
COMMAND		912-462-5185	
Paul Hannemann	IC	912-285-6046	Linc 1*18*1178
Paul Boucher (Kneeknocker)	SOF	505-574-2064	
Jerry Dombrowske (Roundabout)	SOF	912-218-9400	Linc 1*18*10120
PLANS		912-462-5185	
Bill Widrig	RESL	912-462-5185	
James Kent	SITL		Linc 1*46*2535
Sandra Wilkins	DMOB	478-550-2988	912-285-6014
Kathy Arnoldus	SCKN	478-550-2985	
Gary Vallieres	CTSP	478-550-2996	
LOGISTICS		912-462-5287	
	Dispatch	912-462-5611	
	Driver		Linc 1*18*15695
	DISP	912-422-3140	Linc 1*18*1001
	SPLD	912-218-9576	Linc 1*18*9200
Robert "Bob" Elliott	FACL	912-218-9574	Linc 1*18*5342
	BCM		Linc 1*18*4677
OPERATIONS Kneeknocker		912-462-5185	
Barry Chesser (Kneeknocker)	Technical Specialist	912-218-6552	Linc 1*18*4166
Steve Abbott	DIVS	770-550-1868	Linc 1*18*1628
Earl Roberson	Technical Specialist	912-218-8344	Linc 1*18*4279
John Godwin	DIVS		Linc 1*18*3213
Tom Crews	STEN	404-535-2226	Linc 1*18*11725
Michael Hughes	TFLD	912-218-9510	Linc 1*18*11266
OPERATIONS Roundabout		912-422-3140	
Paul Gillis	Technical Specialist		Linc 1*18*20684
Steve Miller/Brantley McManus	OPD		Linc 1*18*11625
Jamie Smith	DIVS		Linc 1*18*4755
Mickey Tucker	TFLD		Linc 1*46*20684
Danny Kelly	STPL		Linc 1*18*14115
Donald Bennett	Water Handling		Linc 1*18*12983
Brent McCarty			Linc 1*18*12585
Lucky Jones			Linc 1*18*5198
FINANCE		478-550-2982 or 2995	

WEATHER FORECAST

FORECAST NO: 32

NAME OF FIRE: Georgia Bay Complex

PREDICTION FOR: Day & Night Ops

UNIT: Georgia Forestry Commission

SHIFT DATE: Mon 05/21/07

SIGNED: John Pendergrast

TIME AND DATE 1800

Incident Meteorologist

FORECAST ISSUED: 05/20/07

WEATHER DISCUSSION: High pressure over the eastern US will keep critically dry weather in place through Tuesday.

The main concern is:

1. Red Flag Warning this afternoon due to critical relative humidity. Afternoon wind increase.

WEATHER FORECAST DAY SHIFT MONDAY: (See table for specific incident forecasts)

...RED FLAG WARNING THIS AFTERNOON FOR CRITICAL RELATIVE HUMIDITY VALUES...

WEATHER: Sunny and dry.

MAX TEMPERATURES: 86 to 89 (24 hour trend ~ same)

MIN HUMIDITY: 20-24%, except 17 to 20% near fire perimeters (24 hour trend ~ same)

20 FT WINDS: Southeast 2 to 5 mph, increasing to 6 to 10 mph around 11 am. Gusting to 14 mph in the afternoon.

STABILITY/INVERSION: Inversion up to 400 ft dissipating by 0930. Mixing heights around 6500 ft. Afternoon Dispersion index around 55. Haines Index 5.

	Sweat Farm Rd.	Bugaboo Scrub II	Roundabout	Knee-Knocker
<i>Max Temperature:</i>	85-87°	85-87°	86-89°	84-86°
<i>Min Humidity:</i>	19-23%	20-24%	18-22%	21-24%
<i>Seabreeze Passage:</i>	1700	1700	1830	1600

WEATHER FORECAST NIGHT SHIFT MONDAY NIGHT:

WEATHER: Clear and mild with patchy dense smoke/fog by daybreak.

MIN TEMPERATURES: 57 to 61.

MAX HUMIDITY: Recovery around 70 percent near the fire perimeter 95 to 100 percent elsewhere.

20 FT WINDS: Southeast 4 to 8 mph early in the evening, decreasing to 2 mph or less after 11 pm..

STABILITY/INVERSION: Inversion around 300 ft beginning to develop after 2100. Dispersion index around

OUTLOOK FOR TUESDAY:

Mostly Sunny and continued dry. High temperatures 85 to 88. Minimum RH values 23 to 27%. Southeast winds 5 to 10 mph, increasing to 9 to 13 mph with gusts to 18 mph around midday.

EXTENDED...WEDNESDAY THROUGH SATURDAY:

Wednesday: Partly cloudy and breezy. Lows in the lower 60s. Highs in the mid 80s. East winds increasing to 10 to 20 mph.

Thursday through Saturday: Partly cloudy with isolated showers or thunderstorms. Lows in the mid 60s. Highs in the mid 80s. East to Southeast winds 10 to 15 mph.

SAFETY MESSAGE**Incident:**

Georgia Bay Complex

Date:

May 21, 2007

Time:

Day & Night Shift

Major Hazards and Risks:

- **Fire Behavior**
- **Communications**
- **Road Conditions**
- **Fatigue**
- **Visability**
- **Driving**

NARRATIVE:

Be alert to an increase in fire behavior with the predicted weather. We are forecasted to experience lower humidity values which should result in more fire activity. The history of this incident demands that everyone be fully aware of the predicted fire behavior. Maintain LCES at all times!

We are working at times in very limited visibility. The combination of dust and smoke can at certain times limit visibility to near zero. Night operations are extremely hampered by these conditions. When we mix equipment with ground personnel, it requires extreme caution. We have received some high visibility lights which ground personnel can pick up at the supply unit. Use of these lights will greatly increase our visibility, but we need to continue to exercise extreme caution when these conditions persist.

Some of our access roads to the fireline are becoming impassable to two wheeled drive and heavy equipment vehicles. When working a new area, ensure that it has been scouted for travel, turn around spots, and possible staging areas.

This incident is likely to continue for some time. We have worked some extended shifts and numerous personnel have extended their assignments. Fatigue is an enemy of all firefighters. Take advantage of our accommodations and get quality rest between shifts.

Our communications plan is a complex one because of the amount of fire activity and our large area of coverage. Become familiar with your assigned frequencies and test their coverage before the actual need arises.

SAFETY OFFICERS: Ronnie Hamm, Harry Kepler, Steve Snider, Tim Sampson, John Orton, Andy Meadows, Larry Miller, Pete Stewart, Rodney Bell, Jerry Dombrowske, and Paul Boucher

Georgia Bay Complex - Bugaboo (Group 2)

INCIDENT RADIO COMMUNICATIONS PLAN		1. Incident Name Georgia Bay Complex		2. Date/Time Prepared 5- 20 -2007	3. Operational Period Date/Time 5- 21-2007
4. BASIC RADIO CHANNEL UTILIZATION					
Radio Type/Cache	Channel	Function	Frequency/Tone	Assignment	Remarks
King NIFC	1	GFC Fargo Repeater	159.120/107.2 151.370/123.0	Command Rpt	Bugaboo Brush
King NIFC	2	Okee North Repeater	164.575 /206.5 163.150 / 206.5 Narrow Band	Command Rpt	Big Turnaround ICP
King NIFC	3	GA Mutual Aid	154.280 154.280	Structural & Tactical	
King NIFC	4	911 & Structural Coordinator Rptr.	154.445/ 118.8 154.010/118.8	Emergency Traffic	This is a heavy traffic channel, use only for Emergency Traffic
King NIFC	5	Tactical	159.285 Rx & Tx	Fargo Group 2	Southern COMPACT
King NIFC	6	Tactical	168.050 Rx & Tx Narrow Band	Divs. E Divs. Y,Z,WB, WC	Fireline
King NIFC	7	Tactical	168.600 Rx & Tx Narrow Band	Divs. G Divs. Swing/IA	Fireline
King NIFC	8	Tactical	164.1375 Rx & Tx Narrow Band	Fargo Group 3 Divs. WA, EE,EF,EG,EH	Fireline
King NIFC	9	Tactical	168.775 Rx & Tx Narrow Band	Divs.H Divs. EA,EB,EC,ED	Fireline
King NIFC	10	Tactical	169.900 Rx & Tx Narrow Band	Divs. I, J, K Divs. E,AA,BB,CC,DD	Fireline
King NIFC	11	Tactical	168.200 Rx & Tx Narrow Band	Divs.A,B,C,D ICP Group, Fargo Group 1 DivWD,WE,WF,WG,WH	Fireline
King NIFC	12	Air to Ground	167.950 167.950/110.9 Narrow Band	Federal Air to Ground	
King NIFC	13	Air To Ground	159.390 Rx & Tx	Georgia Air to Ground	
King NIFC	14	Air Guard	168.625 168.625/110.9 Narrow Band	Air Emergency Only	Air Emergency Only
5. Prepared By (Communications Unit) Carl Bridges/ COML					

WEATHER FORECAST

FORECAST NO: 32

NAME OF FIRE: Georgia Bay Complex

PREDICTION FOR: Day & Night Ops

UNIT: Georgia Forestry Commission

SHIFT DATE: Mon 05/21/07

SIGNED: John Pendergrast

TIME AND DATE 1800

Incident Meteorologist

FORECAST ISSUED: 05/20/07

WEATHER DISCUSSION: High pressure over the eastern US will keep critically dry weather in place through Tuesday.

The main concern is:

1. Red Flag Warning this afternoon due to critical relative humidity. Afternoon wind increase.

WEATHER FORECAST DAY SHIFT MONDAY: (See table for specific incident forecasts)

...RED FLAG WARNING THIS AFTERNOON FOR CRITICAL RELATIVE HUMIDITY VALUES...

WEATHER: Sunny and dry.

MAX TEMPERATURES: 86 to 89 (24 hour trend ~ same)

MIN HUMIDITY: 20-24%, except 17 to 20% near fire perimeters (24 hour trend ~ same)

20 FT WINDS: Southeast 2 to 5 mph, increasing to 6 to 10 mph around 11 am. Gusting to 14 mph in the afternoon.

STABILITY/INVERSION: Inversion up to 400 ft dissipating by 0930. Mixing heights around 6500 ft. Afternoon Dispersion index around 55. Haines Index 5.

	Sweat Farm Rd.	Bugaboo Scrub II	Roundabout	Knee-Knocker
Max Temperature:	85-87°	85-87°	86-89°	84-86°
Min Humidity:	19-23%	20-24%	18-22%	21-24%
Seabreeze Passage:	1700	1700	1830	1600

WEATHER FORECAST NIGHT SHIFT MONDAY NIGHT:

WEATHER: Clear and mild with patchy dense smoke/fog by daybreak.

MIN TEMPERATURES: 57 to 61.

MAX HUMIDITY: Recovery around 70 percent near the fire perimeter 95 to 100 percent elsewhere.

20 FT WINDS: Southeast 4 to 8 mph early in the evening, decreasing to 2 mph or less after 11 pm..

STABILITY/INVERSION: Inversion around 300 ft beginning to develop after 2100. Dispersion index around

OUTLOOK FOR TUESDAY:

Mostly Sunny and continued dry. High temperatures 85 to 88. Minimum RH values 23 to 27%. Southeast winds 5 to 10 mph, increasing to 9 to 13 mph with gusts to 18 mph around midday.

EXTENDED...WEDNESDAY THROUGH SATURDAY:

Wednesday: Partly cloudy and breezy. Lows in the lower 60s. Highs in the mid 80s. East winds increasing to 10 to 20 mph.

Thursday through Saturday: Partly cloudy with isolated showers or thunderstorms. Lows in the mid 60s. Highs in the mid 80s. East to Southeast winds 10 to 15 mph.

SAFETY MESSAGE**Incident:**

Georgia Bay Complex

Date:

May 21, 2007

Time:

Day & Night Shift

Major Hazards and Risks:

- **Fire Behavior**
- **Communications**
- **Road Conditions**
- **Fatigue**
- **Visability**
- **Driving**

NARRATIVE:

Be alert to an increase in fire behavior with the predicted weather. We are forecasted to experience lower humidity values which should result in more fire activity. The history of this incident demands that everyone be fully aware of the predicted fire behavior. Maintain LCES at all times!

We are working at times in very limited visibility. The combination of dust and smoke can at certain times limit visibility to near zero. Night operations are extremely hampered by these conditions. When we mix equipment with ground personnel, it requires extreme caution. We have received some high visibility lights which ground personnel can pick up at the supply unit. Use of these lights will greatly increase our visibility, but we need to continue to exercise extreme caution when these conditions persist.

Some of our access roads to the fireline are becoming impassable to two wheeled drive and heavy equipment vehicles. When working a new area, ensure that it has been scouted for travel, turn around spots, and possible staging areas.

This incident is likely to continue for some time. We have worked some extended shifts and numerous personnel have extended their assignments. Fatigue is an enemy of all firefighters. Take advantage of our accommodations and get quality rest between shifts.

Our communications plan is a complex one because of the amount of fire activity and our large area of coverage. Become familiar with your assigned frequencies and test their coverage before the actual need arises.

SAFETY OFFICERS: Ronnie Hamm, Harry Kepler, Steve Snider, Tim Sampson, John Orton, Andy Meadows, Larry Miller, Pete Stewart, Rodney Bell, Jerry Dombrowske, and Paul Boucher

Fire Behavior Forecast

<u>Forecast No. 32</u>	<u>Prediction for Day Shift</u>
<u>Name of Fire: Georgia Bay Complex</u>	<u>Shift Date: Monday May 21, 2007</u>
<u>Time and Date Forecast Issued</u> <u>1800 hrs 5/20/2007</u>	<u>Signed : <i>John Robertson</i></u> <u>Fire Behavior Analyst</u>

Weather Summary (See Detailed Weather Forecast in the IAP):

Sunny day with RED FLAG warning for low RH again today. South easterly winds to 5 mph in the morning then increasing to 10 mph after 1100 hours with gusts to 14 mph in the afternoon. The sea breeze will kick in between 1600 and 1830 depending on distance from the ocean. Max temperature near 89 degrees and RH as low 18 to 21%. Haines Index 5.

General Fire Behavior: Fine dead fuel will reach to 3 to 6% again this afternoon. Expect increased fire activity earlier in the day, perhaps as early as noon. Once again a potential exists for extreme fire behavior by mid to late afternoon in unburned fuels. Southern rough fuels could reach spread rates up to 120 ch/hr with 20 foot flame lengths. Expect surface spread of 10 to 15 ch/hr with 3 to 4 foot flames in swamp shrub fuels and 40 ch/hr during crowning runs. Spotting up to ¼ mile is likely. Peak burning will occur around 1500 and continue until 2000. Spotting up to ¼ mile is possible. Spotting out to 100 yards is possible from shrub or tree torching in re-burns. The probability of ignition is 50% in the shade and near 100% in the sun. The potential for large fire growth is enhanced with the unstable atmosphere.

Specific Fire Behavior:

Sweat Farm Road: The potential for more slopovers or runs out of the swamp fuels still exists. Escapes will spread rapidly down wind with torching and spotting in the southern rough and young pine plantations. Any spots will develop rapidly by afternoon. Sea breeze expected about 1700 increasing fire behavior as it arrives. Re-burn is still a concern in this fire. Expect a surface fire in needles and leaves with 5 ch/hr spread and 3 ft flame length with torching in scorched shrubs and trees with associated spotting.

Bugaboo Scrub: Spotting to the west from burnouts is still possible. Expect spread down wind to the northwest with torching and spotting in the southern rough fuels and young pine plantations. Sea breeze effect after 1700 will increase chance of spotting.

Kneeknocker: Re-burn is possible from any hold over fire especially after 1300. Torching in the scorched shrub layer could move into the crowns causing spotting down wind. Sea breeze expected to arrive about 1630. This may provide a trigger for a re-burn.

Roundabout: Burn out of organic soils will continue. By mid afternoon the potential exists for re-burn in needle cast and shrub fuels. Torching with spotting across lines is possible where flare-ups occur east of any fireline. Stronger southeast winds expected by 1830.

Initial Attack: Ignitions in unburned fuels will be fast to develop after a few hours of sun. Fire spread will include torching and spotting in southern rough with crowning in young pine. Spread will be toward the northwest.

Air Operations: Inversions will persist until 0900. Smoke will continue to limit visibility.

Safety: Look up to watch for wind changes and smoke columns, look around for fuel changes and spots and look down for smokes.

INCIDENT ACTION PLAN SAFETY ANALYSIS										1. Incident Name Georgia Bay Complex		2. Date 5/21/2007		3. Time Day & Night Shift								
LCES* Analysis of Tactical Applications Lookouts Communications Escape routes Safety zones										Other Risk Analysis												
Branch	Indirect Fireline	Burn out Operations	Power lines	Night operations	Frontal Assault	Anchor Points	Extreme Conditions	Reburn Potential	Unburned Area	Insects, snakes	LCES Mitigations						Other Risk Mitigations					
Sweat Farm	1, 3, 4, 5, 7, 10	1, 3, 4, 5, 6, 10, 13	15, 16	1, 7, 11, 14, 19, 22, 34	1, 3, 4, 5, 7, 22, 29	7	1, 6, 7, 8, 10, 24	1, 3, 5, 7, 9, 16	1, 3, 5, 7, 9, 16	1, 3, 5, 7, 2	1. Establish & maintain LCES. Report LCES checks twice daily to DIVS on line & staging.	1, 3, 4, 23, 27, 32, 33	12, 20, 26, 28, 31, 33	1, 23, 3, 10, 14	3, 5, 11, 19, 23, 25, 26, 27, 30	18, 21, 29, 30	18. Take plenty rest breaks and encourage to drink water NOW through briefings.	19. Watch out for complacency and fatigue. Utilize Fire Departments for structure protection. Tailgate briefings on WUI hazards.	20. Defensive driving will be addressed in all briefings.	21. All personnel must meet the 2:1 work/rest ratio. Line supervisors and Safety will monitor closely.		
	2. Look UP, DOWN and AROUND - Use protective spray with deet on skin (Not on Nomex), permethrin can be used on nomex clothing. Do Not try to catch or kill snakes!	20. Defensive driving will be addressed in all briefings.																				
	3. Post experienced Lookouts. Make sure LCES is in place and make known.	21. All personnel must meet the 2:1 work/rest ratio. Line supervisors and Safety will monitor closely.																				
	4. Use Air Attack as Lookout.																					
Div WA-WM/Fargo	1, 3, 4, 5, 7, 10	1, 3, 4, 5, 6, 7, 10, 13	15, 16	1, 7, 11, 14, 19, 22, 34	1, 3, 4, 5, 7, 22, 29	7	1, 6, 7, 8, 10, 24	1, 3, 5, 7, 9, 16	1, 3, 5, 7, 9, 16	1, 3, 5, 7, 2	5. Flag escape routes on right side of escape route facing outward. Create new escape routes as you progress. Maintain LCES at all times.	1, 3, 4, 23, 27, 32, 33	12, 20, 26, 28, 31, 33	1, 23, 3, 10, 14	3, 5, 11, 19, 23, 25, 26, 27, 30	18, 21, 29, 30	22. Line Supervisors will provide clear, concise briefings.	23. Recognize, Communicate & Avoid Hazmat situations.	24. Refer to the Evacuation Plan for the ICP.	25. Review Wildland Urban "Watch Out" situations. Pg 11 IRPG		
	6. Post lookout for Snags, Runs, and Spot Fires.																					
	7. Use secure anchor points that will not be compromised for observed fire behavior.																					
	8. FBA/Meteorologist develop weather watch system.																					
IA Groups(ICP, Manor, Swi	1, 3, 4, 5, 7, 10	1, 3, 4, 5, 6, 7, 10, 13	15, 16	1, 7, 11, 14, 19, 22, 34	1, 3, 4, 5, 7, 22, 29	7	1, 6, 7, 8, 10, 24	1, 3, 5, 7, 9, 16	1, 3, 5, 7, 9, 16	1, 3, 5, 7, 2	9. All Firefighters must review current weather, predicted weather & fire behavior forecast.	1, 3, 4, 23, 27, 32, 33	12, 20, 26, 28, 31, 33	1, 23, 3, 10, 14	3, 5, 11, 19, 23, 25, 26, 27, 30	18, 21, 29, 30	26. Ensure Traffic Planning is safe and enforced. Heed Defensive Driving techniques noted in Safety Messages.	27. Avoid trash dumps in line construction & avoid smoke from dumps	28. Relocate staging area when driving conditions warrant.	29. Air Attack and/or lead plane will always be in the air to coordinate aircraft.		
	10. Keep Firefighters informed of any changes in predicted weather, consider at least a two day weather pattern when planning burnout operations.																					
	11. Refer to IRPG, pg. 12 on Power Line Hazards.																					
	12. Observe all traffic signals and speed limits.																					
Knee Knecker/Roundabout	1, 3, 4, 5, 7, 10	1, 3, 4, 5, 6, 7, 10, 13	15, 16	1, 7, 11, 14, 19, 22, 34	1, 3, 4, 5, 7, 22, 29	7	1, 6, 7, 8, 10, 24	1, 3, 5, 7, 9, 16	1, 3, 5, 7, 9, 16	1, 3, 5, 7, 2	13. Ensure any burnout operations have been clearly communicated to ALL, prior to burning.	1, 3, 4, 23, 27, 32, 33	12, 20, 26, 28, 31, 33	1, 23, 3, 10, 14	3, 5, 11, 19, 23, 25, 26, 27, 30	18, 21, 29, 30	30. Personnel on ground will stay out of drop zones.	31. Use spotter when backing vehicle(s).	32. Use bandanna to filter smoke in heavy smoke areas.	33. ALL vehicles and equipment must have lights on when running. Plastic colverts under some roads have burned and are collapsing under heavy loads, DIVS will coordinate which roads transport and tractors will use. GSP (912) 287-6500 : EMA (912) 287-4499.		
	14. Night Dispatch will be assign for each night operational period.																					
	15. Scout ahead of tractor operations to avoid making contact with power poles and guide wires when tying into roads. Power companies are working in some DIVS, avoid all down lines as they may become charged.																					
	16. Review IRPG pg. 75 when thunderstorms are predicted or observed.																					

Prepared by (Name and Position)

ICS 215A Brian Beisel SOF1 (T)

Georgia Bay Complex – Sweat Farm (Group 1)

INCIDENT RADIO COMMUNICATIONS PLAN		1. Incident Name Georgia Bay Complex		2. Date/Time Prepared 5- 20 -2007	3. Operational Period Date/Time 5- 21-2007
4. BASIC RADIO CHANNEL UTILIZATION					
Radio Type/Cache	Channel	Function	Frequency/Tone	Assignment	Remarks
King NIFC	1	Command Ware EMA Repeater	158.7825/162.2 153.7625/162.2 Narrow Band	Command Rpt	Sweat Farm
King NIFC	2	Okee North Repeater	164.575 /206.5 163.150 / 206.5 Narrow Band	Command Rpt	Big Turnaround ICP
King NIFC	3	GA Mutual Aid	154.280 154.280	Structural & Tactical	
King NIFC	4	911 & Structural Coordinator Rptr.	154.445/ 118.8 154.010/118.8	Emergency Traffic	This is a heavy traffic channel, use only for Emergency Traffic
King NIFC	5	Tactical	159.285 Rx & Tx	Fargo Group 2	Southern COMPACT
King NIFC	6	Tactical	168.050 Rx & Tx Narrow Band	Divs. E Divs. Y,Z,WB, WC	Fireline
King NIFC	7	Tactical	168.600 Rx & Tx Narrow Band	Divs. G Divs. Swing/IA	Fireline
King NIFC	8	Tactical	164.1375 Rx & Tx Narrow Band	Fargo Group 3 Divs. WA, EE,EF,EG,EH	Fireline
King NIFC	9	Tactical	168.775 Rx & Tx Narrow Band	Divs. H Divs. EA,EB,EC,ED	Fireline
King NIFC	10	Tactical	169.900 Rx & Tx Narrow Band	Divs. I, J, K Divs. E,AA,BB,CC,DD	Fireline
King NIFC	11	Tactical	168.200 Rx & Tx Narrow Band	Divs.A,B,C,D ICP Group, Fargo Group 1 DivWD,WE,WF,WG,WH	Fireline
King NIFC	12	Air to Ground	167.950 167.950/110.9 Narrow Band	Federal Air to Ground	
King NIFC	13	Air To Ground	159.390 Rx & Tx	Georgia Air to Ground	
King NIFC	14	Air Guard	168.625 168.625/110.9 Narrow Band	Air Emergency Only	Air Emergency Only
5. Prepared By (Communications Unit) Carl Bridges/ COML					

Georgia Bay Complex - Bugaboo (Group 2)

INCIDENT RADIO COMMUNICATIONS PLAN		1. Incident Name Georgia Bay Complex		2. Date/Time Prepared 5- 20 -2007	3. Operational Period Date/Time 5- 21-2007
4. BASIC RADIO CHANNEL UTILIZATION					
Radio Type/Cache	Channel	Function	Frequency/Tone	Assignment	Remarks
King NIFC	1	GFC Fargo Repeater	159.120/107.2 151.370/123.0	Command Rpt	Bugaboo Brush
King NIFC	2	Okee North Repeater	164.575 /206.5 163.150 / 206.5 Narrow Band	Command Rpt	Big Turnaround ICP
King NIFC	3	GA Mutual Aid	154.280 154.280	Structural & Tactical	
King NIFC	4	911 & Structural Coordinator Rptr.	154.445/ 118.8 154.010/118.8	Emergency Traffic	This is a heavy traffic channel, use only for Emergency Traffic
King NIFC	5	Tactical	159.285 Rx & Tx	Fargo Group 2	Southern COMPACT
King NIFC	6	Tactical	168.050 Rx & Tx Narrow Band	Divs. E Divs. Y,Z,WB, WC	Fireline
King NIFC	7	Tactical	168.600 Rx & Tx Narrow Band	Divs. G Divs. Swing/IA	Fireline
King NIFC	8	Tactical	164.1375 Rx & Tx Narrow Band	Fargo Group 3 Divs. WA, EE,EF,EG,EH	Fireline
King NIFC	9	Tactical	168.775 Rx & Tx Narrow Band	Divs.H Divs. EA,EB,EC,ED	Fireline
King NIFC	10	Tactical	169.900 Rx & Tx Narrow Band	Divs. I, J, K Divs. E,AA,BB,CC,DD	Fireline
King NIFC	11	Tactical	168.200 Rx & Tx Narrow Band	Divs.A,B,C,D ICP Group, Fargo Group 1 DivWD,WE,WF,WG,WH	Fireline
King NIFC	12	Air to Ground	167.950 167.950/110.9 Narrow Band	Federal Air to Ground	
King NIFC	13	Air To Ground	159.390 Rx & Tx	Georgia Air to Ground	
King NIFC	14	Air Guard	168.625 168.625/110.9 Narrow Band	Air Emergency Only	Air Emergency Only
5. Prepared By (Communications Unit) Carl Bridges/ COML					

Georgia Bay Complex – Kneeknocker/Roundabout (Group 3)

INCIDENT RADIO COMMUNICATIONS PLAN		1. Incident Name Georgia Bay Complex		2. Date/Time Prepared 5- 20 -2007	3. Operational Period Date/Time 5- 21-2007
4. BASIC RADIO CHANNEL UTILIZATION					
Radio Type/Cache	Channel	Function	Frequency/Tone	Assignment	Remarks
King NIFC	1	Mobile to Mobile	159.390 RX & Tx	Breakout	Kneeknocker & Roundabout
King NIFC	2	Mobile to Base	159.390 Rx 159.225 Tx	Breakout	Kneeknocker & Roundabout
King NIFC	3	GA Mutual Aid	154.280 154.280	Race Track Fire	Structural & Tactical
King NIFC	4	Tactical	159.285 Rx & Tx	As needed	Southeastern Compact
King NIFC	5	Tactical	164.1375 Rx & Tx		
King NIFC	6	Tactical	168.775 Rx & Tx	Roundabout A & B	
King NIFC	7	Tactical	169.900 Rx & Tx	Roundabout C & D	
King NIFC	8	Tactical	168.200 Rx & Tx	Kneeknocker	
King NIFC	9	Tactical	159.270 Rx & Tx	Ft. Mudge Fire	Red Channel
King NIFC	10	Tactical	159.420 Rx & Tx	Forest Drive Fire	White Channel
King NIFC	11	Tactical	159.330 Rx & Tx		Blue Channel
King NIFC	12	Air to Ground	169.200 Rx & Tx	Kneeknocker	Air to Ground Dedicated to this complex
King NIFC	13	Air Guard	168.625 168.625/110.9 Narrow Band	Air Emergency Only	Air Emergency Only
King NIFC	14	Knee Repeater	159.465 Rx 151.145 Tx	Command Repeater	Kneeknocker only

5. Prepared By (Communications Unit)
Carl Bridges/ COML

ICS-206 MEDICAL PLAN	1. Incident Name Georgia Bay Complex	2. Date Prepared 5/20/07	3. Time Prepared 18:00	4. Operational Period 5/21/07 DAY & NIGHT SHIFT							
5. Incident Medical Aid Station											
Medical Aid Stations		Location		Paramedics							
				Yes	No						
Medical Unit Big Turnaround	912-496-4359	100 yards west of ICP in the double wide trailer		X							
Medical Unit Georgia Bay	912-218-9101	Georgia Forestry Headquarters ICP		X							
Lenny Throckmorton & Danny Ray		Assigned to DIVS – WA - WE		X							
John (Steve) Spangler 540-320-4838		Assigned By DIVS – Big Turnaround – East Divisions			EMT						
6. Transportation											
A. Ambulance Services											
Name		Address		Phone							
				Paramedics							
				Yes	No						
Ware County EMS		Waycross Georgia (911 to activate)		912-281-9467 Linc 1*96*116							
Charlton Memorial EMS		1203 N Third St Folkston Ga (911 to activate)		888-255-4961 Linc 1*25*3468							
Clinch County EMS		Fargo (911 to activate)									
Air Ambulance Service											
Trauma 1		Jacksonville, FL (26 min/air)		1-800-223-4878							
AirMed		Augusta, GA (2 hrs/air)		1-888-792-9245							
Lifeflight (155.340)		Jacksonville, FL (35 min/air)		1-877-870-7779							
B. Incident Ambulances											
Name		Location		Paramedics							
				Yes	No						
Ware County EMS		Fargo (Fargo Unit – 41 First Street – Fargo, GA 31631)		X							
Charlton EMS		Folkston		X							
7. Hospitals											
Name		Address		Travel Time		Phone		Helipad		Burn Center	
				Air		Grnd		Yes		No	
				min		min.		Yes		No	
Charlton Memorial		1203 N 3 rd St Folkston N 30°50.8 W 82°00.1		10 min		20 min.		912-496-2531		X	
Satilla Regional		410 Darling Ave Waycross Ga N 31°13.56 W 82°21.058		15 min		30 min		912-283-3030		X	
Shands Hospital (level I)		Jacksonville, FL N 30°20 97 W 82° 13 992		45 min		1.5 hrs		800-223-4878		X	
Memorial Hospital		Savannah, GA 4700 Waters 3200.7 8107.6		40 min				912-350-8999		X	
Shands Burn Center		Gainesville, FL 38.33 N 082 20.73W		45 min				352-265-0300		X	
Doctor's Hospital Joseph Still Burn Center		August, GA (Chief Burn Ctr 3328.943 8205.422		90 min		3 ½ hrs		877-863-9595 706-863-9595		X	
8. Medical Emergency Procedures											
<p>Identify any EMT's and Paramedics in your crews. All medical emergencies will be reported to the Division Supervisor who will assume command.</p> <ol style="list-style-type: none"> 1) Provide medical care & stabilize patient. 2) Call 911 3) Notify Communications via radio or cell phone (936)545-6198. 4) Communications will clear radio traffic for medical emergency. 5) Notify Dispatch, provide ONE on site contact person, notify dispatch if that changes <ul style="list-style-type: none"> o Provide location (road intersection, GPS coordinates). o Number of patients o Type of injury or illness – Is it life threatening? Provide vital signs if available. o EMT's on scene and/or needed o Type of transportation needed 6) Com will notify ambulance and coordinate with IC, SOF, MEDL 						<p>*CREW EMT'S (ALL LEVELS) WILL FUNCTION AT THE BASIC LEVEL UNLESS SPECIFICALLY ASSIGNED TO THE INCIDENT AS AN EMT SINGLE RESOURCE.</p>					
<p>Helibase – ICP Waycross: 31 07.23 X 82 15.23 Helispots – Fargo Base Camp: 30 47 30.02 X 82 22 39.5 (4 mi mrker Hwy 177 – Stephen C. Foster St. Prk) H-114 and 30 41.739 X 82 33.961 (Hwy 441 - golf course) H-113</p>											
9. Prepared by (Medical Unit Leader) Robert Carswell (T) (912) 218-9101 Linc 1*18*7480											
10. Reviewed by (Safety Officer) Ronnie Hamm SOF2 (979)268-3782											

AIR OPERATIONS SUMMARY		PREPARED BY: P.J.Pearson			PREPARED DATE/TIME 5/20/07 1600		
1. INCIDENT NAME: Sweat Farm Road Fire		2. OPERATIONAL PERIOD: Day Shift 5/21//07		START TIME: 0700	END TIME: 2000	SUNRISE: 0634	SUNSET: 2018
3. REMARKS (Safety Notes, Hazards, Air Operations Special Equipment, etc.): High Towers in Area Look Up, Look Down, Look Around Waycross Helibase—31 14.95 X 82 23.73 Pogo Helibase-30 18.25 X 82 07.69 ICP Helibase 31 07.23 X 82 15.23 All dispatches will come through the ICP in Waycross for state aviation resources LOOK UP, LOOK DOWN, LOOK ALL AROUND				4. MEDEVAC A/C: N17HX—Pogo Helibase		5. TFR: In Place Radius: Rectangle to 3000 MSL_ Altitude: _3000= MSL NW corner Lat 31 09 02 Long 82 32 04 SE corner Lat 30 53 17 Long 82 02 48:	
6. PERSONNEL	Phone	7. FREQUENCIES	AM	FM	8. FIXED-WING # Avail / Type/ Make-Model / FAA N# / Base(s)		
AOBD: P.J.Pearson 979-220-1217 AOBD: Ron Hollifield-Lake City		AIR/AIR FW:	122.575 122.825 122.925	167.950	Airtankers 00-Type I 20-Type I 22-Type I 09-Type II 10-Type II		
ATGS: L.Mars—Waycross O. Martin(T) Waycross J. Robinson--Waycross C.Cross-Lake City		AIR/AIR RW:	122.575		Leadplanes Lead B-2 ASM Lead 1-4		
State Aviation Lead Waycross Airport Mike Leverette		AIR/GROUND:	122.925	151.145	Base FAX #:		
ASGS: Jack Finley-Pogo Bob Yeager-Lake City		COMMAND:			ATGS Aircraft 90K—Beach Baron—L. Mars w/ O.Martin (T) 01Q—Cessna 401—K. Walsh 82-Z—King Air—C.Cross Lake City		
HEBM: Lon Patterson (T)-- Waycross	979-220- 0522	COMMAND RPT	Rx:	Tx:	Other		
ATB MGR:		DECK FREQ:			Flight follow with Pogo Helibase or Waycross Helibase IA Air Attack for State--- Cessna 182's and CH-47 or UH 60's Bell 407-Chopper 7 IA for the Okefenokee is 38Y (Okee 6) Approved Helispots—Refer to Okefenokee NWR Despite Map One GNG Helicopter will remain at Waycross Airport for IA at all times		
HEBM: Tom Kennedy (TK) 912- 496-4415 HEBM: Mike O'Leary (POGO) 239- 450-2481 HEBM: Dave Langley 505-240-3649		TOLC FREQ:					
Pogo Helibase 912-496-4415 Waycross Dispatch 912-338-5982		FLIGHT FOLLOW		RX 164.625 TX 163.150 TONE 103.5			

Fargo Helibase—(GolfCourse) N 30 41 27.3 x W 82 34 02.0 Stephen Foster SP (Pocket) N30 47 32.2 x W82 22 39..6						ALL AIRCRAFT Call Air Attack when entering TFR--- Waycross Helibase will call Pogo as a back up!!! NOTE NEW HELIBASE LOCATIONS ALL FLIGHTS WILL BE CLEARED WITH AOB
---	--	--	--	--	--	---

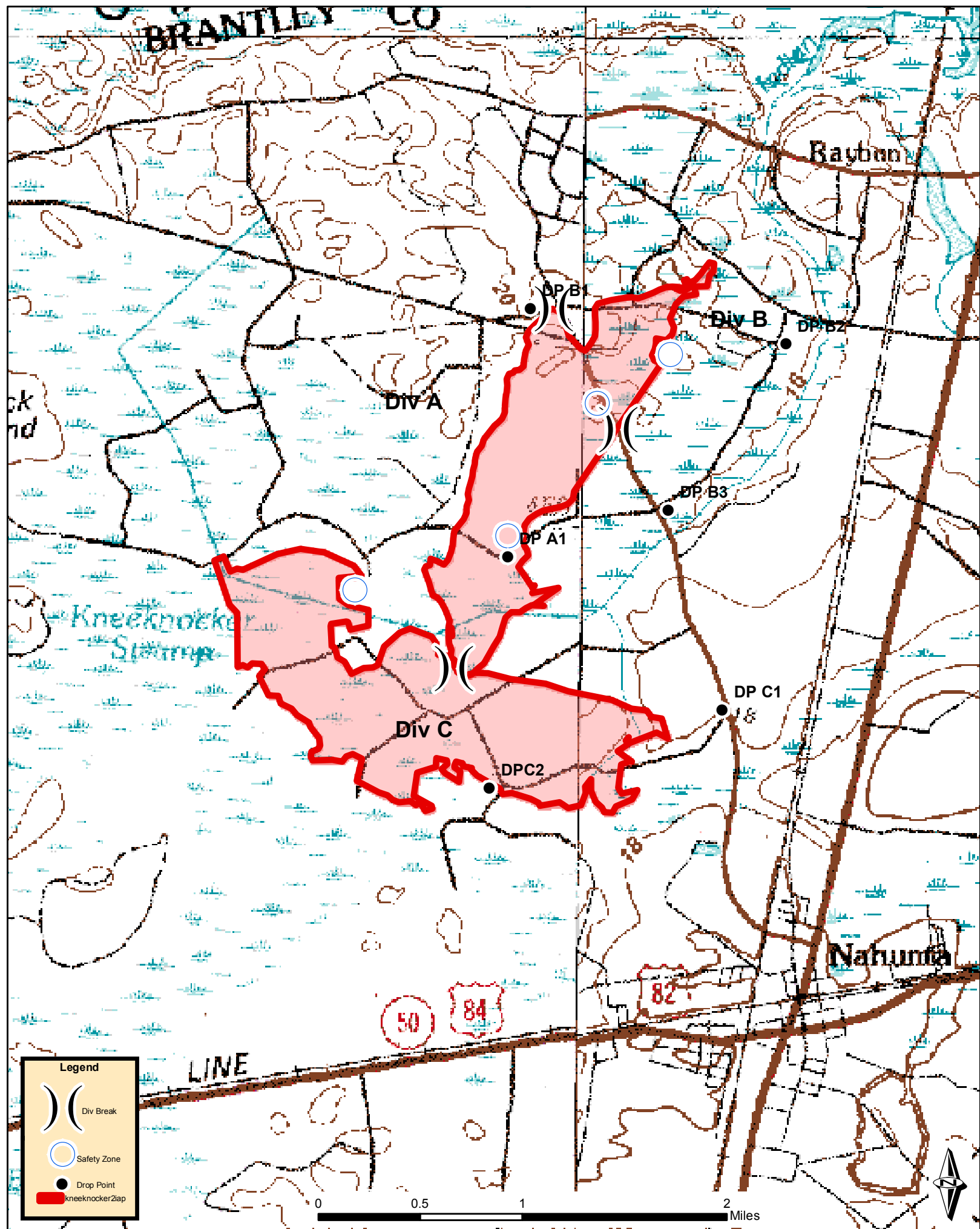
9. HELICOPTERS (Use Additional Sheets As Necessary)

FAA N#	TY	MAKE/MODEL	BASE	AVAIL	START	REMARKS	FAA N#	TY	MAKE/MODEL	BASE	AVAIL	START	REMARKS
N5BH	I	Sikorsky S-70A-27	Pogo	0900	0930	Bucket Drops	N5738Y	III	Bell 206	Pogo	0900	0930	Recon/ Admin/ IA
N4503E	I	Sikorsky S-61N	Pogo	0900	0930	Bucket drops	N12HX	III	Bell 407	Pogo	0900	0930	Admin/ Recon
N15HX	II	Bell 205++	Pogo	0900	0930	Bucket drops	Chopper 7	III	Bell 407	Waycross	0900	0930	State IA-Bucket drops as needed
N17HX II	II	BELL 205++	Pogo	0900	0930	Bucket Drops	90K	I	Baron	Waycross	0900	0930	ATGS
	I	UH-60	Waycross	0900	0930	IA for State	62-Z	I	King Air	Lake City	0800	0930	ATGS
	I	UH-60	Waycross	0900	0930	IA for State							
	I	CH-47	Waycross	0900	0930	IA for State							
01Q	i	Cessna 401	Waycross	0900	0930	ATGS							
		Cessna 182	Waycross	0900	0930	Aerial Detection							

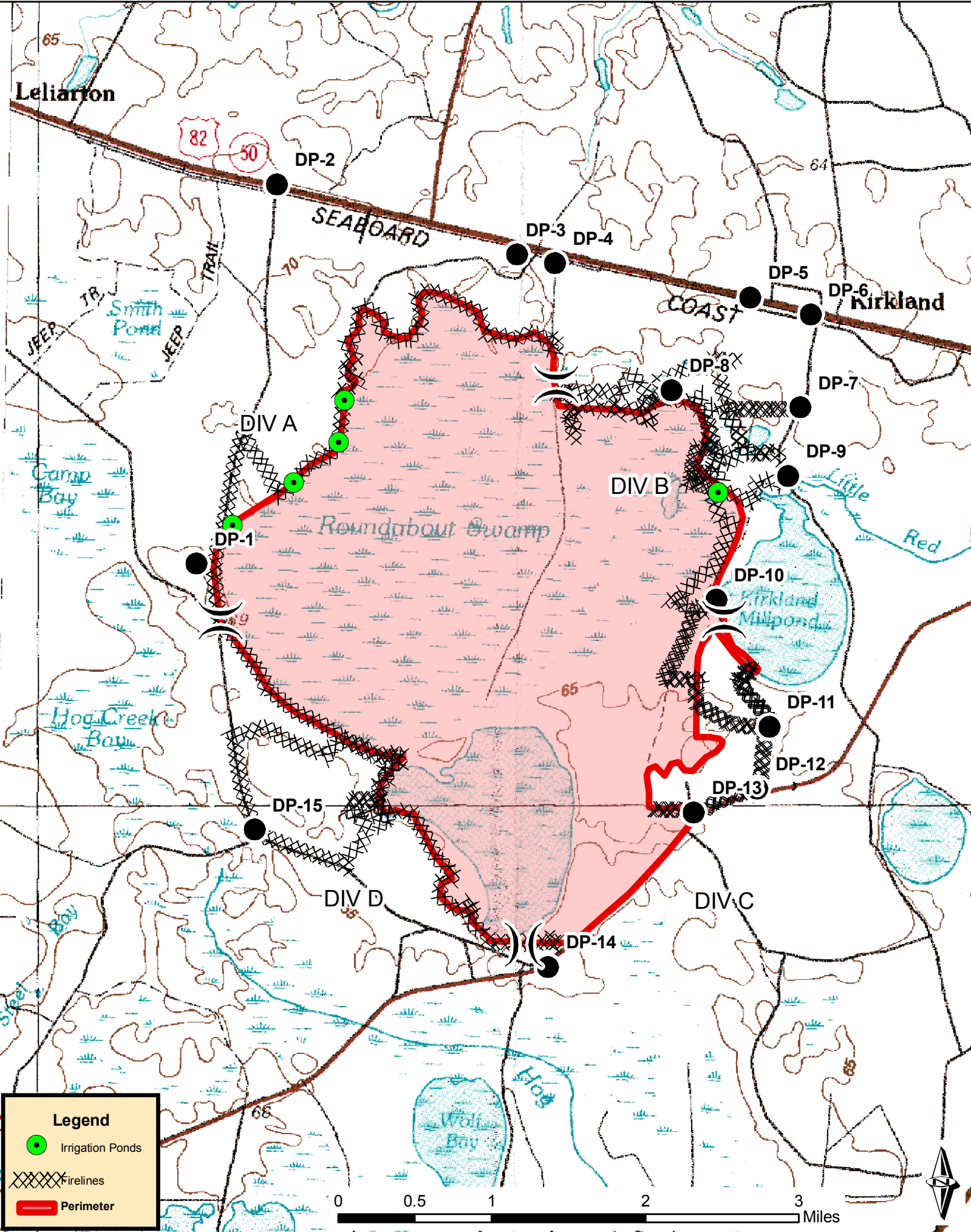
10. TASK/MISSION/ASSIGNMENT (Type/Function includes: Air Tactical, Retardant, Recon, Personnel Transport, Water Dropping, S&R, etc.)

TYPE/FUNCTION	NAME OF PERSONNEL OR CARGO (if applicable) OR INSTRUCTIONS FOR TACTICAL AIRCRAFT	MISSION START	FLY FROM	FLY TO
Type II Helicopter	Operation and Logistic Support	0930	Helibase	Fire and Return
Type III Helicopter	Operation and Logistic Support	0930	Helibase	Fire and Return
Type I Helicopter	Operation and Logistic Support	0930	Helibase	Fire and Return
ATGS Platforms	Aerial Supervision of all Aircraft over Incidents	0930	Waycross Airport & Lake City	Fire and Return
State Detection Fixed Wing	Aerial Detection and IA for New Fire Starts	0930	Waycross Airport	Fire and Return

KneeKnocker Fire - Brantley County, GA



Roundabout Fire - Atkinson County, GA



Legend

- Irrigation Ponds
- Firelines
- Perimeter

0 0.5 1 2 3 Miles



