

ORGANIZATION ASSIGNMENT LIST		9. Operations Section		
1. Incident Name		Chief	Lee Burwell	
Georgia Bay Complex Kneeknocker and Roundabout		Chief	John Nichols	
2. Date	3. Time	a. Branch I - Divisions/Groups		
May 22 2007	1700	Operations BD	Brantley McManus	
		Technical Specialist	Barry Chesser	
4. Operational Period				
May 23, 2007 0800-2000 Day Shift		Division/Group	Kneeknocker	Steve Abbott
5. Incident Commander and Staff				
Incident Commander	Ried Hildreth			
Deputy	Dan Brandon			
Safety Officer	J. Dombrowske, P. Boucher			
Camp IC (MUCS)	Matt Plagenz			
6. Agency Representatives				
Agency	Name			
GFC District 8	Frank Sorrells			
GFC District 10	Willard Fell			
GFC Protection Dept.	Alan Dozier			
GEMA	Alan Robinson	b. Branch II - Divisions/Groups		
		Operations BD	Brantley McManus	
7. Planning Section				
		Technical Specialist		
Chief	John Howard			
		Division/Group	A/D	Rufus Clutchfield
Resource Unit	Bill Widrig	Division/Group	B/C	Lucky Jones
Situation Unit	Greg Smith	Division/Group		
		Division/Group		
Status Check-in		Breakout Task Force 1		
Computer Tech	Gary Vallieres	c. Branch III - Divisions/Groups		
Documentation Unit	Annie Lott	Branch Director		
Fire Investigator		Deputy		
Demob Unit	Marylou Dozier	Division/Group		
GIS		Division/Group		
Infrared Interpreter		Division/Group		
		Division/Group		
8. Logistics Section		d. Air Operations Branch		
Chief	Troy Cleland	Air Operations BD	P.J. Pearson	
Chief (t)	Travis Ruff Bridge	Air Attack Supervisor		
Supply Unit	Keith Walters	Air Support Supervisor		
Ground Support	Dick McManus			
Facilities Unit	Bob Elliott			
Food Unit		GFC Air Operations	Mike Leverette	
Base Camp Manager		Air Tanker Coordinator	Rick Gicla	
Ordering Manager	Chris Woodcock	10. Finance Section		
Equipment Manager		Chief	Robin Nimura	
Communications Unit	Adam Koeller	Deputy		
Technical Specialist		Time Unit Leader	Paula Stevens/Vern Lowther (T)	
Driver	Mike Gochenour	Equipment Time Recorder	Junnetta Myers	
		Personnel Timer Recorder		
		Comp / Claims	Larry Lee/ Eileen Crouse	
		Procurement (t)	Steven Teves	
Admin. Asst.	Kim Cohen (Kneeknocker)	Prepared by (Resource Unit Leader)		
Admin. Asst.	Jessica Giddens (Roundabout)	Bill Widrig		

DIVISION ASSIGNMENT LIST				1. Branch I		2. Division/Group Kneeknocker	
3. Incident Name Georgia Bay Complex Kneeknocker				4. Operational Period Date: 05/23/2007 Time: 0800-2000			
5. Operations Personnel							
Operations Branch Director		Brantley McManus		Technical Specialist (RA)		Barry Chesser	
Group Supervisor		Steve Abbott 5/28		Safety Officer		Paul Boucher	
6. Resources Assigned This Period							
Strike Team/Task Force/ Resource Designator	Leader	Number Persons	Trans Needed	Drop Off PT/Time	Pick Up PT/Time		
STEN	Tom Crews (STEN)	(5/30) 1	No	Fireline 0900	Fireline1900		
Colorado Type 6 ENG San Isabel NF E-9	Alex Rudney (ENGB) Robert Dickamore Justin M. Campbell	(5/26) 3	No	Fireline 0900	Fireline1900		
Colorado Type 6 ENG Upper Pine River Brush 66 E-14	Paul Black (ENG) Paul Valdez	(5/25) 2	No	Fireline 0900	Fireline1900		
West Virginia Type 6 ENG E-7	Brandon Harden (ENGB) William Snodgrass Kyle Garris	(5/25) 3	No	Fireline 0900	Fireline1900		
Arizona Type 6 ENG Lakeside Brush 212 E-12	Corey Valichnac (ENGB) Jason Todora Jake Valichnac	(5/25) 3	No	Fireline 0900	Fireline1900		
Breakout							
North Carolina Task Force	Micheal Huges(TFLD) ENG# 760 T6 E-5190	(5/27) 1	No	Kneeknocker Staging 0900	Kneeknocker Staging 2000		
JD 750 DOZ2 E-5194	Jason O'neal	(5/27) 1	No	Kneeknocker Staging 0900	Kneeknocker Staging 2000		
CAT D5H DOZ3 E-5195	Bobby Phelps	(5/27) 1	No	Kneeknocker Staging 0900	Kneeknocker Staging 2000		
CAT D5H DOZ3 E-5193	James Scott	(5/27) 1	No	Kneeknocker Staging 0900	Kneeknocker Staging 2000		
Engine Type 6 ENG# 740 E-5191	Ferrell Banks	(5/27) 1	No	Kneeknocker Staging 0900	Kneeknocker Staging 2000		
Engine Type 6 ENG# 761 E-5198	Christopher Smith	(5/27) 1	No	Kneeknocker Staging 0900	Kneeknocker Staging 2000		
Engine Type 6 ENG# 1356 E-5199	Chris Holyfield	(5/27) 1	No	Kneeknocker Staging 0900	Kneeknocker Staging 2000		
NC Service Truck w/Mechanic E-5192	Jeff McPherson	(5/27) 1	No	Kneeknocker Staging 0900	Kneeknocker Staging 2000		
MUC Task Force 4	Garry Atteberry 1*18*627	46	NO	Fireline 0900	Fireline 1900		
MUC Task Force 5	Mike Kernes 1*18*007	53	No	Racetrack 0900	Racetrack 1900		
7. Operations Hold line, improve mop up, and monitor fire activity for Kneeknocker using MUC 4 . Hold line, improve mop up, and monitor fire activity for Racetrack using MUC 5 .							
8. Special Instructions For Air Support use the following UTM Coordinates: Kneeknocker E 04014, N 34558 For structure protection call 911!							
9. Division/Group Communication Summary							
Function	Frequency	System	Channel	Function	Frequency	System	Channel
Command				Logistics			
Tactical Div/Group	168.200	Tactical	Group 3 Channel 8	Air to Ground	169.200		12
Prepared By (Resource Unit Leader)		Approved By (Planning Sect. Ch.)		Date		Time	
Bill Widrig		/s/ John Howard		05/22/07		1730	

DIVISION ASSIGNMENT LIST				1. Branch II		2. Division/Group Roundabout A/D	
3. Incident Name Roundabout Fire				4. Operational Period Date: 05/23/2007 Time: 0800- 2000			
5. Operations Personnel							
Ops Branch Director		Brantley McManus		Division/Group Supervisor		Rufus Clutchfield 6/4	
Technical Specialist (RA)				Safety Officer		Jerry Dombrowske	
6. Resources Assigned this Period							
Strike Team/Task Force/ Resource Designator		Leader		Number Persons	Trans. Needed	Drop Off PT./Time	Pick Up PT./Time
Arkansas T-3 TP TF		Eric Smith (STPL) 1*18*9200		(6-5) 1	No	Fireline 0900	Fireline 2000
JD 650 DOZ4 SO-22831		D. Pope/ R. Lane		(5-31) 2	No	Fireline 0900	Fireline 2000
CAT D-5G DOZ3 SO-23568		J. Johnston/ T. Phillips		(5-31) 2	No	Fireline 0900	Fireline 2000
Cat D-5 LGP DOZ3 SO-23562		J. Hoopengartner/ J. Williams		(5-31) 2	No	Fireline 0900	Fireline 2000
Wildland Fire Engine T3 E-2055 Gun-runner		Heath Rowan (5/19) Reggie Simons (5/22)		2	No	Fireline 0900	Fireline 2000
Atkinson Co. Road Dept. Motor-Grader		Jessie Stanfield Joey Anderson		2	No	Fireline 0900	Fireline 2000
Williams TF		Tommy Williams (TFLD)		(5-30) 1	No	Fireline 0900	Fireline 2000
Twiggs 86 T-6 ENG		Larry Rowland Bledsoe		(5-30) 2	No	Fireline 0900	Fireline 2000
Donald Bennett		Water Handling Specialist		1	No	Fireline 0900	Fireline 2000
7. Control Operations Hold containment lines, improve mop up into edge of bays, address hot spots, and monitor fire activity.							
8. Special Instructions Do not drive on canal roads due to under burning and falling trees. Be aware of snags and other hazards. For Air Support use the following UTM Coordinates 315206 East 3463551 North. For Structure Protection Support/Engines Call 911.							
9. Division/Group Communication Summary							
Function	Frequency	System	Channel	Function	Frequency	System	Channel
Command		King NIFC		Logistics		King NIFC	
Tactical Div/Group	168.775	King NIFC	USFS 9 Group 3 Tactical 8	Air to Ground	169.200	King NIFC	12 (Air to ground)
Prepared by (Resource Unit Ldr.) Bill Widrig		Approved by (Planning Sect. Ch.) /s/ John Howard			Date 5/22/2007		Time 2000

DIVISION ASSIGNMENT LIST			1. Branch II		2. Division/Group Roundabout B/C		
3. Incident Name Roundabout Fire			4. Operational Period Date: 5/23/2007 Time: 0800 - 2000				
5. Operations Personnel							
Ops Branch Director		Brantley McManus		Division/Group Supervisor		Lucky Jones 1*18* 5198	
Technical Specialist (RA)				Safety Officer		Jerry Dombrowske	
6. Resources Assigned this Period							
Strike Team/Task Force/ Resource Designator		Leader		Number Persons	Trans. Needed	Drop Off PT./Time	Pick Up PT./Time
Single Resource Engine							
Wyoming Type 6 ENG BLM E-8		Kevin Moreno Jim Gates Bob Evans		(5/25) 3	No	Fireline 0900	Fireline 2000
Oklahoma Type 6 ENG BIA# 8661 E-5		Jerry Fletcher Ron Fields Clyde Crosnoe		(5/26) 3	No	Fireline 0900	Fireline 2000
JD Track Hoe		Quinton Dillingham		1	No	Fireline 0900	Fireline 2000
DOT 5000 gal. Water Tender		Chad Sowell		1	No	Fireline 0900	Fireline 2000
7. Control Operations Hold containment lines, improve mop up into edge of bays, address hot spots, and monitor fire activity.							
8. Special Instructions Do not drive on canal roads due to under burning and falling trees. Be aware of snags and other hazards. For Air Support use the following UTM Coordinates 315206 East 3463551 North. For Structure Protection Support/Engines Call 911.							
9. Division/Group Communication Summary							
Function	Frequency	System	Channel	Function	Frequency	System	Channel
Command		King NIFC		Logistics		King NIFC	
Tactical Div/Group	168.775	King NIFC	USFS 9 Group 3 Tactical 8	Air to Ground	169.200	King NIFC	12 (air to ground)
Prepared by (Resource Unit Ldr.) Bill Widrig		Approved by (Planning Sect. Ch.) /s/ John Howard			Date 5/22/2007		Time 2000

DIVISION ASSIGNMENT LIST			1. Branch II		2. Division/Group Roundabout Breakout		
3. Incident Name Roundabout Fire			4. Operational Period Date: 5/23/2007 Time: 0800– 2000				
5. Operations Personnel							
Ops Branch Director		Brantley McManus		Division/Group Supervisor			
Technical Specialist (RA)				Safety Officer		Jerry Dombrowske	
6. Resources Assigned this Period							
Strike Team/Task Force/ Resource Designator		Leader		Number Persons	Trans. Needed	Drop Off PT./Time	Pick Up PT./Time
CAT D-4H DOZ3 Berrien-72		Josh Rowan		1	No	Roundabout Staging / 0900	Roundabout Staging / 2000
JD 750C DOZ2 Ware -71		Hilton Bennett		1	No	Roundabout Staging / 0900	Roundabout Staging / 2000
JD 750C DOZ2 Echols-70		Greame Treloar		1	No	Roundabout Staging / 0900	Roundabout Staging / 2000
7. Control Operations Task Force 1 : Respond to and suppress breakouts and spot overs on the Roundabout fire. Stage at Roundabout Staging area and wait dispatch. Breakout Task Force 1 should be readily available for suppressing breakouts on the Roundabout Fire within 3 minutes after dispatch.							
8. Special Instructions For Air Support use the following UTM Coordinates 315206 East 3463551 North For Structure Protection Support/Engines for Roundabout fire Call 911 : Also notify David Moore EMA IC (Linc# 1*11*4801) or Diane May GEMA Coordinator (Linc# 1*11*4818)							
9. Division/Group Communication Summary							
Function		Frequency		System		Channel	
Command				King NIFC			
Tactical Div/Group				King NIFC			
				Logistics			
				Air to Ground			
Prepared by (Resource Unit Ldr.) Bill Widrig			Approved by (Planning Sect. Ch.) /s/ John Howard			Date 5/22/2007	
						Time 2000	

NAME	POSITION	PHONE NUMBERS	FAX NUMBERS
Macon Extended Dispatch		478-751-3533	
Greg Strenkowski (Macon Extended)		478-751-3492	
Alan Dozier (GFC Protection)		478-751-3490	
Waycross—OPS & Air OPS		912-285-6039	912-285-6014
Kneeknocker ICP	Linc 1*18*11583	912-462-5185	912-462-5189
Roundabout ICP	Linc 1*18*1001	912-422-3140	912-422-6260
Nahunta ICP	Linc 1*18*11583		
Roger Browning	MUCO OSC	478-361-1962	Linc 1*18*169
OTHER AGENCIES		PHONE #	SOUTHERN LINK
GFC Waycross District Office	Jeremy Kent	912-287-4915	
Brantley County Fire Coordinator	Ken Lee	912-218-2012	Linc 1*44*1081
Nahunta FD Fire Chief	Button Lee	912-717-3330 / 904-699-1619	Linc 1*25*323
EMA / 911 Director	Billy Lartz	912-282-8730 / 912-217-1638	Linc 1*11*2001
Brantley County Sheriff	Robert Thomas	912-614-1658	Linc 1*25*1130
DNR ENGB, Terry Trowbridge	T. Trowbridge	(C) 912-223-2815	
DNR ENOP	Sam Williams	229-212-0124	
Atkinson EMA IC	David Moore		Linc 1*11*4801
Atkinson GEMA Coordinator	Diane May		Linc 1*11*4818
COMMAND		912-462-5185	
Reid Hildreth	IC	912-285-6046	Linc 1*18*1178
Paul Boucher (Kneeknocker)	SOF	505-574-2064	
Jerry Dombrowske (Roundabout)	SOF	912-218-9400	Linc 1*18*10120
PLANS		912-462-5185	
Bill Widrig	RESL	912-462-5185	
James Kent	SITL		Linc 1*46*2535
Marylou Dozier	DMOB	912-218-9361	18*12771
	SCKN		
Gary Vallieres	CTSP	478-550-2996	
LOGISTICS		912-462-5287	
	Dispatch	912-462-5611	
Mike Gochenour	Driver		
Chris (Woody) Woodcock	ORDM	912-462-5288	
Dick McManus	GSUL	478-550-3001	
Robert "Bob" Elliott	FACL	912-218-9574	Linc 1*18*5342
	BCM		Linc 1*18*4677
OPERATIONS Kneeknocker		912-462-5185	
Barry Chesser (Kneeknocker)	Technical Specialist	912-218-6552	Linc 1*18*4166
Steve Abbott	DIVS	770-550-1868	Linc 1*18*1628
	Technical Specialist	912-218-8344	Linc 1*18*4279
Tom Crews	STEN	404-535-2226	Linc 1*18*11725
Michael Hughes	TFLD	912-218-9510	Linc 1*18*11266
OPERATIONS Roundabout		912-422-3140	
	Technical Specialist		Linc 1*18*20684
Brantley McManus	OPD		Linc 1*18*11625
			Linc 1*18*4755
Eric Smith	STPL		Linc 1*18*9200
Donald Bennett	Water Handling		Linc 1*18*12983
Brent McCarty	DIVS		Linc 1*18*12585
Lucky Jones	DIVS		Linc 1*18*5198
FINANCE		478-550-2982 or 2995	

INCIDENT OBJECTIVES	1. Incident Name Georgia Bay Complex	2. Date Prepared 5/22/07	3. Time Prepared 1830
	4. Operational Period 05/23/2007 Day and Swing Shift		
5. General Control Objectives For The Incident (Include Alternatives)			
<ol style="list-style-type: none"> 1. Provide for the safety of the public and assigned incident resources through effective hazard / risk assessment and mitigation. 2. Provide timely and accurate information updates to the GFC, cooperators, affected communities, and other stakeholders. 3. Provide accurate cost accountability and documentation of expenditures for the duration of the incident. 4. Develop and maintain coordination with local fire departments, local EOC directors, GEMA, other IMT's deployed in the area, GOAL, and private industry. 5. Provide support on initial and extended attack fires as requested by the 2 Southeast Georgia GFC districts. 6. Ensure a safe and effective transfer of command from the Lone Star State IMT to the NCDFR IMT. 7. Keep the Bugaboo fire east of State Hwy 177, east of State Hwy 94 from Fargo to the Florida state line. 8. Keep the Sweat Farm Fire south of the town of Waycross and Highway 122, west of Highway 1, north and west of swamp road, and east of the town of Manor. 9. Keep the Kneeknocker and Roundabout fires within the current established fire lines / perimeters. 			
6. Weather Forecast For Period			
<u>WEATHER FORECAST DAY SHIFT WEDNESDAY:</u> (See table for specific incident forecasts)			
WEATHER: Partly cloudy and breezy.			
MAX TEMPERATURES: 82 to 85 (24 hour trend ~ 2-3 lower)			
MIN HUMIDITY: 36 to 40 (24 hour trend ~ 10% higher)			
20 FT WINDS: Northeast 5 to 10 mph early, increasing to 8 to 13 mph with gusts to 16 mph around 1000. Becoming East 15 to 20 mph with gusts to 25 mph in the afternoon.			
STABILITY/INVERSION: Light inversion dissipating by 0830. Mixing heights 5000 ft. Afternoon Dispersion index around 70. Haines Index 4 (moderate).			
7. General Safety Message			
Transfer of command beginning this shift! This is always an opportunity for confusion; be sure to know who you are working for and in what area. Check radio communications at start of shift; don't wait till you really need it to discover you have a glitch.			
8. ATTACHEMENTS (X IF ATTACHED)			
<input checked="" type="checkbox"/> Organization List - ICS 203		<input checked="" type="checkbox"/> Medical Plan - ICS 206	<input checked="" type="checkbox"/> Tailgate Briefing Form _____
<input checked="" type="checkbox"/> Division Assignment Lists - ICS 204		<input checked="" type="checkbox"/> Incident Map - separate	(safety, weather, fire behavior)
<input checked="" type="checkbox"/> Communications Plan - ICS 205		<input type="checkbox"/> Traffic Plan	<input type="checkbox"/> _____
9. Prepared By (Planning Section Chief)		10. Approved By (Incident Commander)	
/S/ John Howard/Don Watson		/S/ Reid Hildreth/Dan Hildreth	



Georgia Bay Complex Kneeknocker Fire RoundaboutFire

Incident Action Plan
Wednesday
May 23, 2007



GEMA

IMPORTANT FINANCE INFORMATION

ALL CREW TIME REPORTS AND EMERGENCY EQUIPMENT SHIFT TICKETS SHOULD BE TURNED IN TO FINANCE AT THE END OF EACH SHIFT ON A DAILY BASIS. SUPERVISORS SIGNING THESE TIME REPORTS SHOULD ENSURE THE FOLLOWING:

- **PLEASE WRITE THE FIRE NAME YOU ARE WORKING ON YOUR CTR'S AND/OR SHIFT TICKETS – THIS IS VERY IMPORTANT FOR FEMA REIMBURSEMENT.**
- **THE “O” NUMBER SHOULD BE LISTED ON THE CREW TIME REPORT**
- **COMPLETE 1 (one) CREW TIME REPORT FOR EACH PERSON WITH AN “O” NUMBER**
- **“E” NUMBERS SHOULD BE LISTED ON THE EMERGENCY EQUIPMENT SHIFT TICKET(S)**
- **CORRECT DATES ARE IMPERATIVE!**
- **SUPERVISORS – PLEASE REVIEW THE CTR'S/SHIFT TICKET'S YOU ARE ASKED TO SIGN**

☐ WEATHER FORECAST

FORECAST NO: 34

NAME OF FIRE: Georgia Bay Complex

PREDICTION FOR: Day & Night Ops

UNIT: Georgia Forestry Commission

SHIFT DATE: Tue 05/23/07

SIGNED: *John Pendergrast*

TIME AND DATE 1800

Incident Meteorologist

FORECAST ISSUED: 05/22/07

WEATHER DISCUSSION: Strong high pressure over the northeast states will build southward over the Carolinas. Strong winds will develop over the southeast today.

The main concern is:

1. Breezy and gusty east winds.

WEATHER FORECAST DAY SHIFT WEDNESDAY: (See table for specific incident forecasts)

WEATHER: Partly cloudy and breezy.

MAX TEMPERATURES: 82 to 85 (24 hour trend ~ 2-3 lower)

MIN HUMIDITY: 36 to 40 (24 hour trend ~ 10% higher)

20 FT WINDS: Northeast 5 to 10 mph early, increasing to 8 to 13 mph with gusts to 16 mph around 1000. Becoming East 15 to 20 mph with gusts to 25 mph in the afternoon.

STABILITY/INVERSION: Light inversion dissipating by 0830. Mixing heights 5000 ft. Afternoon Dispersion index around 70. Haines Index 4 (moderate).

	Sweat Farm Rd.	Bugaboo Scrub II	Roundabout	Knee-Knocker
Max Temperature:	83-86°	83-86°	84-87°	82-85°
Min Humidity:	35 to 39%	34-38%	32-36%	39-43%
Seabreeze Passage:	N/A	N/A	N/A	N/A

WEATHER FORECAST NIGHT SHIFT WEDNESDAY NIGHT: Breezy winds will slowly diminish after dusk.

WEATHER: Partly cloudy. Breezy in the early evening.

MIN TEMPERATURES: 62 to 66.

MAX HUMIDITY: Recovery around 60 percent near the fire perimeter 75 to 80 percent elsewhere.

20 FT WINDS: East 10 mph in the evening becoming Northeast 5 to 8 mph late.

STABILITY/INVERSION: No Inversion expected.

OUTLOOK FOR THURSDAY:

Partly cloudy and continued dry. Becoming breezy in the afternoon. High temperatures 82 to 85. Minimum RH values 31 to 36%. Northeast winds 6 to 11 mph during the morning becoming East 10 to 15 mph with gusts to 20 mph in the afternoon.

EXTENDED: FRIDAY THROUGH MONDAY:

Friday through Saturday: Partly cloudy and dry. Lows in the low 60s. Highs in the mid to upper 80s. East to Southeast winds 5 mph increasing to 10 mph with higher gusts in a seabreeze in the afternoons.
 Sunday through Monday: Partly cloudy. Lows in the mid 60s. Highs in the upper 80s. Southeast winds 5 to 10 mph becoming gusty to 15 mph with late afternoon seabreeze each afternoon.

SAFETY MESSAGE

Incident:

Georgia Bay Complex

Date:

May 23, 2007

Time:

Day & Night Shift

Major Hazards and Risks:

- Transition
- Fire Behavior
- Snags
- Air Operations
- Reburn Potential
- Driving

NARRATIVE:

Transfer of command beginning this shift! This is always an opportunity for confusion; be sure to know who you are working for and in what area. Check radio communications at start of shift; don't wait till you really need it to discover you have a glitch.

Stronger winds can push fire even though higher humidity values are predicted. The history of this incident demands that everyone be fully aware of the predicted fire behavior. Maintain LCES at all times!

Driving continues to be priority. The best solution to most driving hazards is to simply reduce our speed. Be alert to varied speed limits in and around town and ensure that all incident personnel are in compliance with all traffic laws!

When the opportunity arises to utilize aircraft, please remember to adhere to the basic air operations safety guidelines. Ensure that communications are maintained (**know you're air to ground frequency**) and that proper distance is given to working aircraft. Stay clear of all dip sites.

Predicted winds can produce snag problems, be alert when working around them. Post lookouts if needed.

Needle cast is still producing reburn potential. Keep this in consideration when evaluating escape routes and safety zones.

SAFETY OFFICERS: Michael Huffman, Mark Luellen, Ronnie Hamm, Harry Kepler, Steve Snider, Tim Sampson, John Orton, Andy Meadows, Larry Miller, Pete Stewart, Rodney Bell, Jerry Dombrowske, and Paul Boucher

INCIDENT ACTION PLAN SAFETY ANALYSIS										1. Incident Name Georgia Bay Complex		2. Date 5/23/2007		3. Time Day & Night Shift																
LCES* Analysis of Tactical Applications Lookouts Communications Escape routes Safety zones										Other Risk Analysis																				
Branch	Indirect Fireline	Burn out Operations	Power lines	Night operations	Frontal Assault	Anchor Points	Extreme Conditions	Reburn Potential	Unburned Area	Insects, snakes	LCES Mitigations						Other Risk Mitigations													
Sweat Farm	1, 3, 4, 5, 7, 10	1, 3, 4, 5, 6, 10, 13	15, 16	1, 7, 11, 14, 19, 22, 34	1, 3, 4, 5, 7, 22, 29	7	1, 6, 7, 10, 24	1, 3, 5, 7, 9, 16	1, 3, 5, 7, 9, 16	1, 3, 5, 7, 24	2	1. Establish & maintain LCES. Report LCES checks twice daily to DIVS on line & staging.						18. Take plenty rest breaks and encourage to drink water NOW through briefings. 19. Watch out for complacency and fatigue. Utilize Fire Departments for structure protection. Tailgate briefings on WUI hazards. 20. Defensive driving will be addressed in all briefings. 21. All personnel must meet the 2:1 work/rest ratio. Line supervisors and Safety will monitor closely.												
							2. Look UP, DOWN and AROUND - Use protective spray with deet on skin (Not on Nomex), permethrin can be used on nomex clothing. Do Not try to catch or kill snakes!						1, 3, 4, 20, 23, 26, 27, 32, 33											3, 5, 11, 19, 23, 25, 26, 18, 29, 30						
							3. Post experienced Lookouts. Make sure LCES is in place and make known.						1, 3, 4, 20, 23, 26, 27, 32, 33																	
							4. Use Air Attack as Lookout.						1, 3, 4, 20, 23, 26, 27, 32, 33																	
Div WA-WM/Fargo	1, 3, 4, 5, 7, 10	1, 3, 4, 5, 6, 7, 10, 13	15, 16	1, 7, 11, 14, 19, 22, 34	1, 3, 4, 5, 7, 22, 29	7	1, 6, 7, 10, 24	1, 3, 5, 7, 9, 16	1, 3, 5, 7, 9, 16	1, 3, 5, 7, 24	2	5. Flag escape routes on right side of escape route facing outward. Create new escape routes as you progress. Maintain LCES at all times.						22. Line Supervisors will provide clear, concise briefings. 23. Recognize, Communicate & Avoid Hazmat situations. 24. Refer to the Evacuation Plan for the ICP. 25. Review Wildland Urban "Watch Out" situations. Pg 11 IRPG												
							6. Post lookout for Snags, Runs, and Spot Fires.						1, 3, 4, 20, 23, 26, 27, 32, 33																	
							7. Use secure anchor points that will not be compromised for observed fire behavior.						1, 3, 4, 20, 23, 26, 27, 32, 33																	
													1, 3, 4, 20, 23, 26, 27, 32, 33																	
IA Groups(ICP, Manor, Swi	1, 3, 4, 5, 7, 10	1, 3, 4, 5, 6, 7, 10, 13	15, 16	1, 7, 11, 14, 19, 22, 34	1, 3, 4, 5, 7, 22, 29	7	1, 6, 7, 10, 24	1, 3, 5, 7, 9, 16	1, 3, 5, 7, 9, 16	1, 3, 5, 7, 24	2	9. All Firefighters must review current weather, predicted weather & fire behavior forecast.						26. Ensure Traffic Planning is safe and enforced. Heed Defensive Driving techniques noted in Safety Messages. 27. Avoid trash dumps in line construction & avoid smoke from dumps 28. Relocate staging area when driving conditions warrant. 29. Air Attack and/or lead plane will always be in the air to coordinate aircraft.												
							10. Keep Firefighters informed of any changes in predicted weather, consider at least a two day weather pattern when planning burnout operations.						1, 3, 4, 20, 23, 26, 27, 32, 33																	
							11. Refer to IRPG, pg. 12 on Power Line Hazards.						1, 3, 4, 20, 23, 26, 27, 32, 33																	
							12. Observe all traffic signals and speed limits.						1, 3, 4, 20, 23, 26, 27, 32, 33																	
Knee Knecker/Roundabout	1, 3, 4, 5, 7, 10	1, 3, 4, 5, 6, 7, 10, 13	15, 16	1, 7, 11, 14, 19, 22, 34	1, 3, 4, 5, 7, 22, 29	7	1, 6, 7, 10, 24	1, 3, 5, 7, 9, 16	1, 3, 5, 7, 9, 16	1, 3, 5, 7, 24	2	13. Ensure any burnout operations have been clearly communicated to ALL, prior to burning.						30. Personnel on ground will stay out of drop zones. 31. Use spotter when backing vehicle(s). 32. Use bandanna to filter smoke in heavy smoke areas. 33. ALL vehicles and equipment must have lights on when running. Plastic colverts under some roads have burned and are collapsing under heavy loads, DIVS will coordinate which roads transport and tractors will use. GSP (912) 287-6500 : EMA (912) 287-4499. 34. Use blinking lights or glow sticks on back of helmet or backpack to be seen by equipment operators.												
							14. Night Dispatch will be assigned for each night operational period.						1, 3, 4, 20, 23, 26, 27, 32, 33																	
							15. Scout ahead of tractor operations to avoid making contact with power poles and guide wires when tying into roads. Power companies are working in some DIVS, avoid all down lines as they may become charged.						1, 3, 4, 20, 23, 26, 27, 32, 33																	
							16. Review IRPG pg. 75 when thunderstorms are predicted or observed.						1, 3, 4, 20, 23, 26, 27, 32, 33																	

Fire Behavior Forecast

<u>Forecast No. 33</u>	<u>Prediction for Day Shift</u>
<u>Name of Fire: Ga Bay Complex /Sweat Farm Road</u>	<u>Shift Date: Wednesday May 23, 2007</u>
<u>Time and Date Forecast Issued</u> <u>1900 hrs 5/22/2007</u>	<u>Signed : Gary Curcio</u> <u>Fire Behavior Analyst</u>

Weather Summary (See Detailed Weather Forecast in the IAP):

Expect a “**very significant**” increase in afternoon windspeeds as the marine influence extends inland. The windspeeds are approaching the level when Bugaboo Scrub made its 12-mile run in an afternoon. Afternoon 20-foot winds out of the “**east**” will range from **15-20 mph with gusts to 25mph. Minimum RH** will range from **32-43%**.

General Fire Behavior: Fuel moistures continue to be at historic lows for both dead and live fuels. Heavy dead fuels and the live flammable green shrubs coupled with the unfavorable weather conditions today make all fires serious potential for new & rapid growth. Rates of spread can be extreme. There is high potential for spotting that will rapidly generate new fire starts. Any surface fire can quickly get up into the crowns of the pine plantations.

Today's inversion is light and its effect gone by 0830. Expect fire activity to start at 1100 hrs. Extreme fire behavior is likely in all fuels (Pine Plantations/Southern Rough and Swamp shrubs). The time period for peak active burning is 1500 to 2000 Hrs. Following sunset, fire spread will slow as windspeeds decrease. However, RH recovery will be weak and permit burning into the night. Spotting out to ½ mile can be observed in the swamp shrub fuels and ¼ mile in the pine fuels.

Specific Fire Behavior:

Sweat Farm: Divisions WB, & WC and Bugaboo Scrub: Divisions WG, WH & WI - Strong east winds increase the potential for slop-overs, or break-overs as runs out of the swamp are generated through the day. New spot fires can be easily start and spread rapidly in adjacent southern rough and young pine plantations.

Kneeknocker: Any sleepers will continue to be a threat. The shrub fuels where they have been scorched can very easily move to the crowns and generate new spot fires.

Roundabout: Continued organic soil burning continues to be a concern. Strong winds will foster re-burn potential. Any needle cast or browned shrub fuels are prime candidates for re-burn throughout the afternoon.

Initial Attack: With the strong east winds developing through the day, fire starts can develop fast in all fuels. These winds can fan many reburns in the needles cast stands and / dead shrub areas.

Air Operations: With the light inversion smoke will not limit aircraft. Smoke production is expected to be plentiful but winds will keep visibility clear. The western perimeters of the fires will be impacted by smoke production. Winds speeds & gusts need to be monitored.

Safety: Take the time to repeatedly assess your fire perimeter's weather & the fire's behavior. We need to be alert when all fires' transition from just active too extremely active. At all times know where your escape routes are, and know, that you can reach them.

Georgia Bay Complex – Sweat Farm (Group 1)

INCIDENT RADIO COMMUNICATIONS PLAN		1. Incident Name Georgia Bay Complex		2. Date/Time Prepared 5- 21 -2007	3. Operational Period Date/Time 5- 22-2007
4. BASIC RADIO CHANNEL UTILIZATION					
Radio Type/Cache	Channel	Function	Frequency/Tone	Assignment	Remarks
King NIFC	1	Command Ware EMA Repeater	158.7825/162.2 153.7625/162.2 Narrow Band	Command Rpt	Sweat Farm
King NIFC	2	Fire Tower Repeater	159.225 /203.5 151.280 / 203.5 Narrow Band	Command Rpt	South of Homerville
King NIFC	3	GA Mutual Aid	154.280 154.280	Structural & Tactical	
King NIFC	4	911 & Structural Coordinator Rptr.	154.445/ 118.8 154.010/118.8	Emergency Traffic	This is a heavy traffic channel, use only for Emergency Traffic
King NIFC	5	Tactical	159.285 Rx & Tx	DIVS. WH, WI, WJ	Southern COMPACT
King NIFC	6	Tactical	168.050 Rx & Tx Narrow Band	Divs. E, WF, WG	Fireline
King NIFC	7	Tactical	168.600 Rx & Tx Narrow Band	Divs. WB, WC, WD, WE, Swing/IA	Fireline
King NIFC	8	Tactical	164.1375 Rx & Tx Narrow Band	Divs. WA, WK, WL, WM	Fireline
King NIFC	9	Tactical	168.775 Rx & Tx Narrow Band	Divs. H	Fireline
King NIFC	10	Tactical	169.900 Rx & Tx Narrow Band	Divs. I, J, K	Fireline
King NIFC	11	Tactical	168.200 Rx & Tx Narrow Band	Divs. A,B,C,D ICP & Manor Group	Fireline
King NIFC	12	Air to Ground	167.950 167.950/110.9 Narrow Band	Federal Air to Ground	
King NIFC	13	Air To Ground	159.390 Rx & Tx	Georgia Air to Ground	
King NIFC	14	Air Guard	168.625 168.625/110.9 Narrow Band	Air Emergency Only	Air Emergency Only

5. Prepared By (Communications Unit)
Carl Bridges/ COML

Georgia Bay Complex - Bugaboo (Group 2)

INCIDENT RADIO COMMUNICATIONS PLAN		1. Incident Name Georgia Bay Complex		2. Date/Time Prepared 5- 21 -2007	3. Operational Period Date/Time 5- 22-2007
4. BASIC RADIO CHANNEL UTILIZATION					
Radio Type/Cache	Channel	Function	Frequency/Tone	Assignment	Remarks
King NIFC	1	GFC Fargo Repeater	159.120/107.2 151.370/123.0	Command Rpt	Bugaboo Brush
King NIFC	2	Fire Tower Repeater	159.225 /203.5 151.280 / 203.5 Narrow Band	Command Rpt	South of Homerville
King NIFC	3	GA Mutual Aid	154.280 154.280	Structural & Tactical	
King NIFC	4	911 & Structural Coordinator Rptr.	154.445/ 118.8 154.010/118.8	Emergency Traffic	This is a heavy traffic channel, use only for Emergency Traffic
King NIFC	5	Tactical	159.285 Rx & Tx	Divs. WH, WI, WJ	Southern COMPACT
King NIFC	6	Tactical	168.050 Rx & Tx Narrow Band	Divs. E, WF, WG	Fireline
King NIFC	7	Tactical	168.600 Rx & Tx Narrow Band	Divs. WB, WC, WD, WE Swing/IA	Fireline
King NIFC	8	Tactical	164.1375 Rx & Tx Narrow Band	Divs. WA, WK, WL, WM	Fireline
King NIFC	9	Tactical	168.775 Rx & Tx Narrow Band	Divs. H	Fireline
King NIFC	10	Tactical	169.900 Rx & Tx Narrow Band	Divs. I, J, K	Fireline
King NIFC	11	Tactical	168.200 Rx & Tx Narrow Band	Divs. A,B,C,D ICP & Manor Group	Fireline
King NIFC	12	Air to Ground	167.950 167.950/110.9 Narrow Band	Federal Air to Ground	
King NIFC	13	Air To Ground	159.390 Rx & Tx	Georgia Air to Ground	
King NIFC	14	Air Guard	168.625 168.625/110.9 Narrow Band	Air Emergency Only	Air Emergency Only

5. Prepared By (Communications Unit)
Carl Bridges/ COML

Georgia Bay Complex – Kneeknocker/Roundabout (Group 3)

INCIDENT RADIO COMMUNICATIONS PLAN		1. Incident Name Georgia Bay Complex		2. Date/Time Prepared 5- 21 -2007	3. Operational Period Date/Time 5- 22-2007
4. BASIC RADIO CHANNEL UTILIZATION					
Radio Type/Cache	Channel	Function	Frequency/Tone	Assignment	Remarks
King NIFC	1	Mobile to Mobile	159.390 RX & Tx	Breakout	Kneeknocker & Roundabout
King NIFC	2	Mobile to Base	159.390 Rx 159.225 Tx	Breakout	Kneeknocker & Roundabout
King NIFC	3	GA Mutual Aid	154.280 154.280	Race Track Fire	Structural & Tactical
King NIFC	4	Tactical	159.285 Rx & Tx	As needed	Southeastern Compact
King NIFC	5	Tactical	164.1375 Rx & Tx		
King NIFC	6	Tactical	168.775 Rx & Tx	Roundabout A & B	
King NIFC	7	Tactical	169.900 Rx & Tx	Roundabout C & D	
King NIFC	8	Tactical	168.200 Rx & Tx	Kneeknocker	
King NIFC	9	Tactical	159.270 Rx & Tx	Ft. Mudge Fire	Red Channel
King NIFC	10	Tactical	159.420 Rx & Tx	Forest Drive Fire	White Channel
King NIFC	11	Tactical	159.330 Rx & Tx		Blue Channel
King NIFC	12	Air to Ground	169.200 Rx & Tx	Kneeknocker	Air to Ground Dedicated to this complex
King NIFC	13	Air Guard	168.625 168.625/110.9 Narrow Band	Air Emergency Only	Air Emergency Only
King NIFC	14	Knee Repeater	159.465 Rx 151.145 Tx	Command Repeater	Kneeknocker only
5. Prepared By (Communications Unit) Carl Bridges/ COML					

AIR OPERATIONS SUMMARY		PREPARED BY: Bob Seigler			PREPARED DATE/TIME 5/22//07 1600			
1. INCIDENT NAME: Georgia Bay Complex		2. OPERATIONAL PERIOD: Day Shift 5/23/07			START TIME: 0700	END TIME: 2000	SUNRISE: 0625	SUNSET: 2023
3. REMARKS (Safety Notes, Hazards, Air Operations Special Equipment, etc.): Waycross Helibase—31 14.95 X 82 23.73 Pogo Helibase-30 44.25 X 82 07.69 ICP Helispot 31 07.23 X 82 15.23					4. MEDEVAC A/C: N17HX—Pogo Helibase		5. TFR: In Place Radius: Rectangle to 3000 MSL_ Altitude: _3000= MSL NW corner Lat 31 09 02 Long 82 32 04 SE corner Lat 30 53 17 Long 82 02 48:	
<ul style="list-style-type: none"> • Avoid take-off / landing over ICP, • All dispatches will come through the ICP in Waycross for state aviation resources, • High Towers in Area, • LOOK UP, LOOK DOWN, LOOK ALL AROUND, • Aircraft Dispatching Priorities: <ol style="list-style-type: none"> 1. Life 2. Structures Threatened 3. Initial Attack 4. Fire threatening perimeter control lines 								
6. PERSONNEL		Phone	7. FREQUENCIES	AM	FM	8. FIXED-WING # Avail / Type/ Make-Model / FAA N# / Base(s)		
AOBD: Bob Seigler		828-231-4560	AIR/AIR FW:	122.575 E/sd 122.825 scdry 122.925 GA IA 123.125 W/sd		Airtankers @ 00-Type I LCQ 20-Type I 22-Type I 09-Type II 10-Type II		
ATGS: L.Mars—Waycross			AIR/AIR RW:	122.575 E/sd 123.125 W/sd		Leadplanes Lead B-2 ASM Lead 1-4		
State Aviation Lead Waycross Airport Mike Leverette			AIR/GROUND:	122.925	151.145 GA IA 167.950 Swt. Farm	Base FAX #:		
ASGS: Ray Dew			COMMAND:			ATGS Aircraft 90K—Beach Baron—L. Mars 01Q—Cessna 401—K. Walsh 82-Z—King Air—C.Cross Lake City		
Waycross HEBM: Dave Langley		505-240-3649	COMMAND RPT	Rx: Tx:		Other		
ATB MGR:			DECK FREQ:			Flight follow with Pogo Helibase or Waycross Helibase		
ICP Helispot HESM: Wayne Langston			TOLC FREQ:	Rx: 151.145	Tx 151.145	IA Air Attack for State--- Cessna 182's and UH 60's Bell 407-Chopper 7		
Pogo Helibase		912-496-4415	FLIGHT FOLLOW		RX 164.625	Approved Helispots—Refer to Okefenokee NWR Despite Map		
Waycross Helibase		912-338-5982			TX 163.150 TONE 103.5	One GNG Helicopter will remain at Waycross Airport for IA at all times		

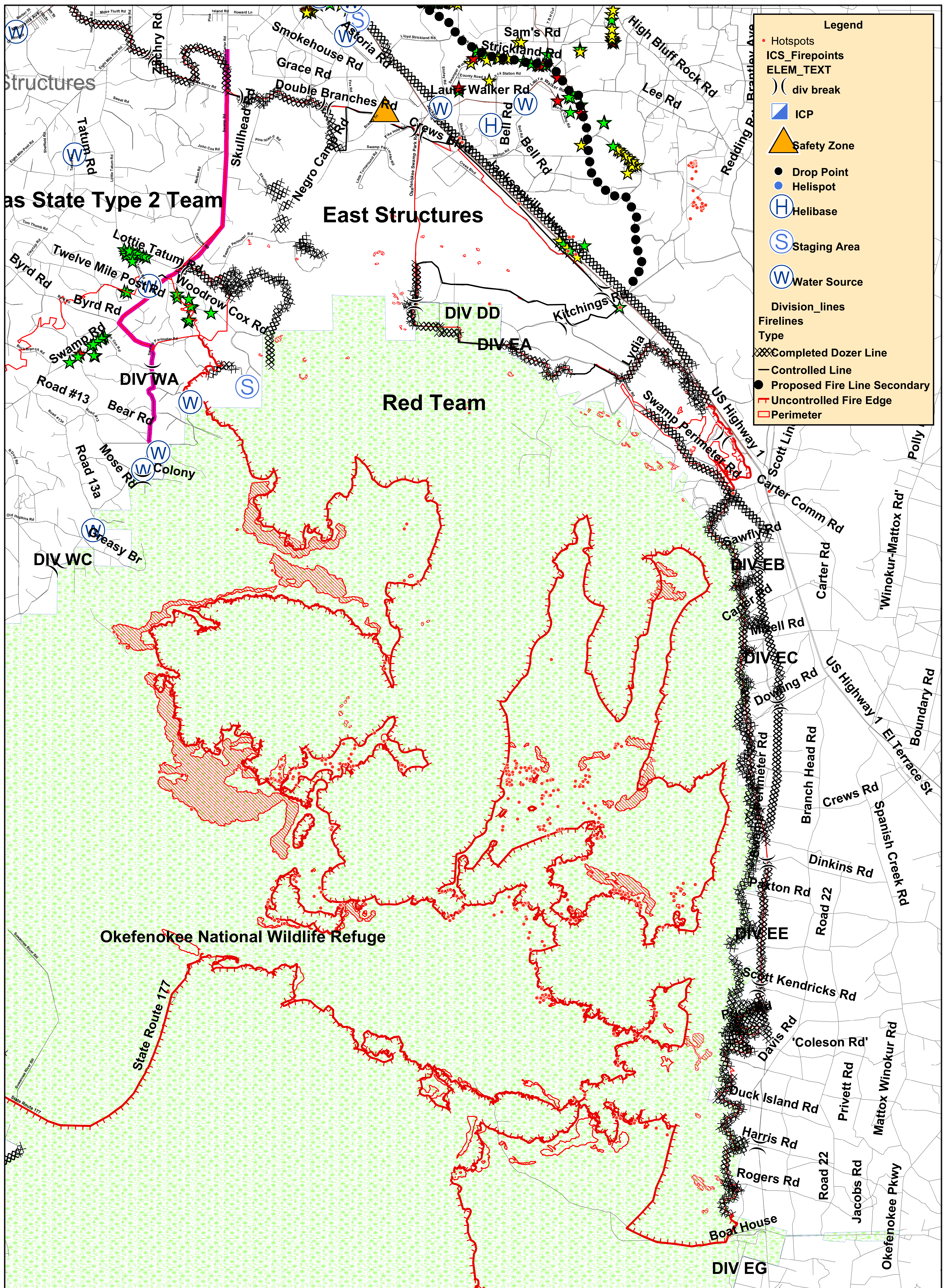
Fargo Helibase—(Golf Course) N 30 41 27.3 x W 82 34 02.0 Stephen Foster SP (Pocket) N 30 47 32.2 x W 82 22 39..6					ALL AIRCRAFT Call Air Attack when entering TFR--- Waycross Helibase will call Pogo as a back up!!! ALL FLIGHTS WILL BE CLEARED WITH AOBD 107Z - IR-RW Cobra
---	--	--	--	--	--

9. HELICOPTERS (Use Additional Sheets As Necessary)

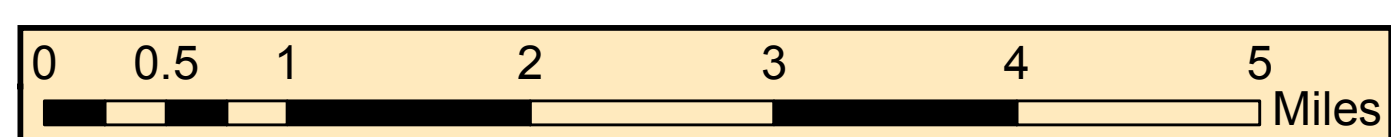
FAA N#	TY	MAKE/MODEL	BASE	AVAIL	START	REMARKS	FAA N#	TY	MAKE/MODEL	BASE	AVAIL	START	REMARKS
N5BH	I	Sikorsky S-70A-27	Pogo	0900	0930	Bucket Drops	N5738Y	III	Bell 206	Pogo	0900	0930	Recon/ Admin/ IA
N4503E	I	Sikorsky S-61N	Pogo	0900	0930	Bucket drops	N12HX	III	Bell 407	Pogo	0900	0930	Admin/ Recon
N15HX	II	Bell 205++	Pogo	0900	0930	Bucket drops	Chopper 7	III	Bell 407	Waycross	0900	0930	State IA-Bucket drops as needed
N17HX II	II	BELL 205++	Pogo	0900	0930	Bucket Drops	90K	I	Baron	Waycross	0900	0930	ATGS
	I	UH-60	Waycross	0900	0930	IA for State	62-Z	I	King Air	Lake City	0800	0930	ATGS
	I	UH-60	Waycross	0900	0930	IA for State							
	I	CH-47	Waycross	0900	0930	IA for State							
01Q	i	Cessna 401	Waycross	0900	0930	ATGS							
		Cessna 182	Waycross	0900	0930	Aerial Detection							

10. TASK/MISSION/ASSIGNMENT (Type/Function includes: Air Tactical, Retardant, Recon, Personnel Transport, Water Dropping, S&R, etc.)						
TYPE/FUNCTION	NAME OF PERSONNEL OR CARGO (if applicable) OR INSTRUCTIONS FOR TACTICAL AIRCRAFT			MISSION START	FLY FROM	FLY TO
Type II Helicopter	Operation and Logistic Support			0930	Helibase	Fire and Return
Type III Helicopter	Operation and Logistic Support			0930	Helibase	Fire and Return
Type I Helicopter	Operation and Logistic Support			0930	Helibase	Fire and Return
ATGS Platforms	Aerial Supervision of all Aircraft over Incidents			0930	Waycross Airport & Lake City	Fire and Return
State Detection Fixed Wing	Aerial Detection and IA for New Fire Starts			0930	Waycross Airport	Fire and Return

ICS-206 MEDICAL PLAN	1. Incident Name Georgia Bay Complex	2. Date Prepared 5/22/07	3. Time Prepared 1200	4. Operational Period 5/23/07 DAY & NIGHT SHIFT							
5. Incident Medical Aid Station											
Medical Aid Stations			Location				Paramedics				
							Yes		No		
Medical Unit Georgia Bay	912-218-9101	Georgia Forestry Headquarters ICP						2 EMT			
Lenny Throckmorton & Thomas Nails			Assigned to DIVS – WA - WE				X				
6. Transportation											
A. Ambulance Services											
Name			Address			Phone		Paramedics			
								Yes No			
Ware County EMS			Waycross Georgia (911 to activate)			912-281-9467 Linc 1*96*116		X			
Charlton Memorial EMS			1203 N Third St Folkston Ga (911 to activate)			888-255-4961 Linc 1*25*3468		X			
Clinch County EMS			Fargo (911 to activate)					X			
Air Ambulance Service											
Trauma 1			Jacksonville, FL (26 min/air)			1-800-223-4878		X			
AirMed			Augusta, GA (2 hrs/air)			1-888-792-9245		X			
Lifeflight (155.340)			Jacksonville, FL (35 min/air)			1-877-870-7779		X			
B. Incident Ambulances											
Name			Location				Paramedics				
							Yes		No		
Ware County EMS			Fargo (Fargo Unit – 41 First Street – Fargo, GA 31631)				X				
7. Hospitals											
Name		Address		Travel Time		Phone		Helipad		Burn Center	
				Air Grnd				Yes No		Yes No	
Charlton Memorial		1203 N 3 rd St Folkston N 30°50.8 W 82°00.1		10 min 20 min.		912-496-2531		X		X	
Satilla Regional		410 Darling Ave Waycross Ga N 31°13.56 W 82°21.058		15 min 30 min		912-283-3030		X		X	
Shands Hospital (level I)		Jacksonville, FL N 30°20 97 W 82° 13 992		45 min 1.5 hrs		800-223-4878		X		X	
Memorial Hospital		Savannah, GA 4700 Waters 3200.7 8107.6		40 min		912-350-8999		X		X	
Shands Burn Center		Gainesville, FL 38.33 N 082 20.73W		45 min		352-265-0300		X		X	
Doctor's Hospital Joseph Still Burn Center		August, GA (Chief Burn Ctr 3328.943 8205.422		90 min 3 ½ hrs		877-863-9595 706-863-9595		X		X	
8. Medical Emergency Procedures											
<p>Identify any EMT's and Paramedics in your crews. All medical emergencies will be reported to the Division Supervisor who will assume command.</p> <ol style="list-style-type: none"> 1) Provide medical care & stabilize patient. 2) Call 911 3) Notify Communications via radio over Command Channel. 4) Communications will clear radio traffic for medical emergency. 5) Notify Dispatch, provide ONE on site contact person, notify dispatch if that changes <ul style="list-style-type: none"> o Provide location (road intersection, GPS coordinates). o Number of patients o Type of injury or illness – Is it life threatening? Provide vital signs if available. o EMT's on scene and/or needed o Type of transportation needed 6) Com will notify ambulance and coordinate with IC, SOF, MEDL 						<p>*CREW EMT'S (ALL LEVELS) WILL FUNCTION AT THE BASIC LEVEL UNLESS SPECIFICALLY ASSIGNED TO THE INCIDENT AS AN EMT SINGLE RESOURCE.</p>					
<p>Helibase – ICP Waycross: 31 07.23 X 82 15.23 Helispots – Fargo Base Camp: 30 47 30.02 X 82 22 39.5 (4 mi mrker Hwy 177 – Stephen C. Foster St. Prk) H-114 and 30 41.739 X 82 33.961 (Hwy 441 - golf course) H-113</p>											
9. Prepared by (Medical Unit Leader) (GA) Robert Carswell (T) (912) 218-9101 Linc 1*18*7480 (NC) Wayne Williams (919) 801-4264						10. Reviewed by (Safety Officer) (NC) Mike Huffman (919) 218-9060					



Georgia Bay Complex
Big Turnaround Fire
Tiled IAP Map
05-23-2007



Map By: Jim Pugh
May 23, 2007
Perimeter as of
May 22, 2007 0700

East Section

