



# Georgia Bay Complex Kneeknocker Fire RoundaboutFire

*Incident Action Plan*  
*Thursday*  
*May 24, 2007*



**GEMA**

<b>INCIDENT OBJECTIVES</b>	1. Incident Name <b>Georgia Bay Complex</b>	2. Date Prepared 5/23/07	3. Time Prepared 1830
4. Operational Period 05/24/2007 Day and Swing Shift			
5. General Control Objectives For The Incident (Include Alternatives) <ol style="list-style-type: none"> <li>1. Provide for the safety of the public and assigned incident resources through effective hazard / risk assessment and mitigation.</li> <li>2. Provide timely and accurate information updates to the GFC, cooperators, affected communities, and other stakeholders.</li> <li>3. Provide accurate cost accountability and documentation of expenditures for the duration of the incident.</li> <li>4. Develop and maintain coordination with local fire departments, local EOC directors, GEMA, other IMT's deployed in the area, GOAL, and private industry.</li> <li>5. Provide support on initial and extended attack fires as requested by the 2 Southeast Georgia GFC districts.</li> <li>6. Ensure a safe and effective transfer of command.</li> <li>7. Keep the Bugaboo fire east of State Hwy 177, east of State Hwy 94 from Fargo to the Florida state line.</li> <li>8. Keep the Sweat Farm Fire south of the town of Waycross and Highway 122, west of Highway 1, north and west of swamp road, and east of the town of Manor.</li> <li>9. Keep the Kneeknocker and Roundabout fires within the current established fire lines / perimeters.</li> </ol>			
6. Weather Forecast For Period			
<b><u>WEATHER FORECAST DAY SHIFT THURSDAY:</u> (See table for specific incident forecasts )</b>			
<b>WEATHER:</b> Partly cloudy and becoming breezy. A 20 percent chance of showers.			
<b>MAX TEMPERATURES:</b> 82 to 85 (24 hour trend ~ same)			
<b>MIN HUMIDITY:</b> 38 to 42 (24 hour trend ~ 2 % higher)			
<b>20 FT WINDS:</b> East 5 to 10 mph early, increasing to 10 to 15 mph with gusts to 20 mph around 1100.			
Becoming East 15 to 20 mph in the afternoon.			
<b>STABILITY/INVERSION:</b> Mixing heights 5500 ft. Afternoon Dispersion index around 60. Haines Index 3-4			
(moderate).			
7. General Safety Message			
<b>Breezy, gusty winds can push fire even though higher humidity values are predicted. The history of this incident demands that everyone be fully aware of the predicted fire behavior. Maintain LCES at all times!</b>			
8. ATTACHEMENTS (X IF ATTACHED)			
<input checked="" type="checkbox"/> Organization List - ICS 203	<input checked="" type="checkbox"/> Medical Plan - ICS 206	<input checked="" type="checkbox"/> Tailgate Briefing Form	
<input checked="" type="checkbox"/> Division Assignment Lists - ICS 204	<input checked="" type="checkbox"/> Incident Map - separate	(safety, weather, fire behavior)	
<input checked="" type="checkbox"/> Communications Plan - ICS 205	<input type="checkbox"/> Traffic Plan	<input type="checkbox"/> _____	
9. Prepared By (Planning Section Chief)		10. Approved By (Incident Commander)	
<b>/S/ John Howard/Don Watson</b>		<b>/S/ Reid Hildreth/Dan Brandon</b>	

ORGANIZATION ASSIGNMENT LIST		9. Operations Section		
1. Incident Name		Chief	Lee Burwell	
Georgia Bay Complex Kneeknocker and Roundabout		Chief	John Nichols	
2. Date		3. Time		
May 23, 2007		1700		
		a. Branch I - Divisions/Groups		
		Operations BD	Brantley McManus	
		Technical Specialist	Barry Chesser	
4. Operational Period				
May 24, 2007 0800-2000 Day Shift		Division/Group	Kneeknocker	Steve Abbott
5. Incident Commander and Staff				
Incident Commander	Reid Hildreth			
Deputy	Dan Brandon			
Safety Officer	J. Dombrowske, P. Boucher			
Camp IC (MUCS)	Matt Plagenz			
6. Agency Representatives				
Agency	Name			
GFC District 8	Frank Sorrells			
GFC District 10	Willard Fell			
GFC Protection Dept.	Alan Dozier			
GEMA	Alan Robinson	b. Branch II - Divisions/Groups		
		Operations BD	Brantley McManus	
		Technical Specialist		
7. Planning Section				
Chief	John Howard			
		Division/Group	A/D	Rufus Clutchfield
Resource Unit	Bill Widrig	Division/Group	B/C	Lucky Jones
Situation Unit		Division/Group		
		Division/Group		
Status Check-in	Chris Liv (t)	Breakout Task Force 1		
Computer Tech	Gary Vallieres	c. Branch III - Divisions/Groups		
Documentation Unit	Annie Lott	Branch Director		
Fire Investigator		Deputy		
Demob Unit	Marylou Dozier	Division/Group		
GIS		Division/Group		
Infrared Interpreter		Division/Group		
		Division/Group		
8. Logistics Section		d. Air Operations Branch		
Chief	Troy Cleland	Air Operations BD	P.J. Pearson	
Chief (t)	Travis Ruff	Air Attack Supervisor		
Supply Unit	Keith Walters	Air Support Supervisor		
Ground Support	Dick McManus			
Facilities Unit	Bob Elliott			
Food Unit		GFC Air Operations	Mike Leverette	
Base Camp Manager		Air Tanker Coordinator	Rick Gicla	
Ordering Manager	Chris Woodcock	10. Finance Section		
Equipment Manager		Chief	Robin Nimura	
Communications Unit	Adam Koeller	Deputy		
Technical Specialist		Time Unit Leader	Paula Stevens/Vern Lowther (T)	
Driver	Mike Gochenour	Equipment Time Recorder		
		Personnel Timer Recorder		
		Comp / Claims	Larry Lee/ Eileen Crouse	
		Procurement	Steven Teves (t)	
		Cost	Roger Siemers	
Admin. Asst.	Kim Cohen (Kneeknocker)	Prepared by (Resource Unit Leader)		
Admin. Asst.	Jessica Giddens (Roundabout)	<b>Bill Widrig</b>		

<b>DIVISION ASSIGNMENT LIST</b>				1. Branch		2. Division/Group	
				<b>Kneeknocker</b>		<b>All Divisions</b>	
3. Incident Name <b>Georgia Bay Complex</b>				4. Operational Period Date: <b>05/24/2007</b> Time: <b>0800-2000</b>			
5. Operations Personnel							
Operations Branch Director		<b>Brantley McManus</b>		Technical Specialist (RA)		<b>Barry Chesser</b>	
Group Supervisor		<b>Steve Abbott 5/28</b>		Safety Officer		<b>Paul Boucher</b>	
6. Resources Assigned This Period							
Strike Team/Task Force/ Resource Designator		Leader		Number Persons	Trans Needed	Drop Off PT/Time	Pick Up PT/Time
<b>STEN</b>		<b>Tom Crews (STEN)</b>		(5/30) 1	No	Fireline 0900	Fireline1900
Colorado Type 6 ENG San Isabel NF E-9		Alex Rudney (ENGB) Robert Dickamore Justin M. Campbell		(5/26) 3	No	Fireline 0900	Fireline1900
Colorado Type 6 ENG Upper Pine River Brush 66 E-14		Paul Black (ENG) Paul Valdez		(5/25) 2	No	Fireline 0900	Fireline1900
West Virginia Type 6 ENG E-7		Brandon Harden (ENGB) William Snodgrass Kyle Garris		(5/25) 3	No	Fireline 0900	Fireline1900
Arizona Type 6 ENG Lakeside Brush 212 E-12		Corey Valichnac (ENGB) Jason Todora Jake Valichnac		(5/25) 3	No	Fireline 0900	Fireline1900
<b>Breakout</b>							
<b>North Carolina Task Force</b>		<b>Micheal Huges(TFLD)</b> ENG# 760 T6 E-5190		(5/27) 1	No	Kneeknocker Staging 0900	Kneeknocker Staging 2000
JD 750 DOZ2 E-5194		Jason O'neal		(5/27) 1	No	Kneeknocker Staging 0900	Kneeknocker Staging 2000
CAT D5H DOZ3 E-5195		Bobby Phelps		(5/27) 1	No	Kneeknocker Staging 0900	Kneeknocker Staging 2000
CAT D5H DOZ3 E-5193		James Scott		(5/27) 1	No	Kneeknocker Staging 0900	Kneeknocker Staging 2000
Engine Type 6 ENG# 740 E-5191		Ferrell Banks		(5/27) 1	No	Kneeknocker Staging 0900	Kneeknocker Staging 2000
Engine Type 6 ENG# 761 E-5198		Christopher Smith		(5/27) 1	No	Kneeknocker Staging 0900	Kneeknocker Staging 2000
Engine Type 6 ENG# 1356 E-5199		Chris Holyfield		(5/27) 1	No	Kneeknocker Staging 0900	Kneeknocker Staging 2000
NC Service Truck w/Mechanic E-5192		Jeff McPherson		(5/27) 1	No	Kneeknocker Staging 0900	Kneeknocker Staging 2000
<b>MUC Task Force 4</b>		<b>Garry Atteberry 1*18*627</b>		<b>46</b>	<b>NO</b>	<b>Fireline 0900</b>	<b>Fireline 1900</b>
<b>MUC Task Force 5</b>		<b>Mike Kernes 1*18*007</b>		<b>53</b>	<b>No</b>	<b>Racetrack 0900</b>	<b>Racetrack 1900</b>
7. Operations <b>Hold line, improve mop up, and monitor fire activity for Kneeknocker using MUC 4 .</b> <b>Hold line, improve mop up, and monitor fire activity for Racetrack using MUC 5 .</b>							
8. Special Instructions <b>For Air Support use the following UTM Coordinates: Kneeknocker E 04014, N 34558</b> <b>For structure protection call 911!</b>							
9. Division/Group Communication Summary							
Function	Frequency	System	Channel	Function	Frequency	System	Channel
Command				Logistics			
Tactical Div/Group	<b>168.200</b>	<b>GRP 3 Tactical</b>	<b>8</b>	Air to Ground	<b>169.200</b>		<b>12</b>
Prepared By (Resource Unit Leader)		Approved By (Planning Sect. Ch.)			Date		Time
<b>Bill Widrig</b>		<b>/s/ John Howard</b>			<b>05/23/07</b>		<b>1730</b>

<b>DIVISION ASSIGNMENT LIST</b>				1. Branch <b>Roundabout</b>		2. Division/Group <b>A/D</b>	
3. Incident Name <b>Georgia Bay Complex</b>				4. Operational Period Date: <b>05/24/2007</b> Time: <b>0800- 2000</b>			
5. Operations Personnel							
Ops Branch Director		<b>Brantley McManus</b>		Division/Group Supervisor		<b>Rufus Crutchfield 6/4</b>	
Technical Specialist (RA)				Safety Officer		<b>Jerry Dombrowske</b>	
6. Resources Assigned this Period							
Strike Team/Task Force/ Resource Designator		Leader		Number Persons	Trans. Needed	Drop Off PT./Time	Pick Up PT./Time
<b>Arkansas T-3 TP TF</b>		<b>Eric Smith (STPL) 1*18*9200</b>		<b>(6-5) 1</b>	<b>No</b>	<b>Fireline 0900</b>	<b>Fireline 2000</b>
<b>JD 650 DOZ4 SO-22831</b>		<b>D. Pope/ R. Lane</b>		<b>(5-31) 2</b>	<b>No</b>	<b>Fireline 0900</b>	<b>Fireline 2000</b>
<b>CAT D-5G DOZ3 SO-23568</b>		<b>J. Johnston/ T. Phillips</b>		<b>(5-31) 2</b>	<b>No</b>	<b>Fireline 0900</b>	<b>Fireline 2000</b>
<b>Cat D-5 LGP DOZ3 SO-23562</b>		<b>J. Hoopengartner/ J. Williams</b>		<b>(5-31) 2</b>	<b>No</b>	<b>Fireline 0900</b>	<b>Fireline 2000</b>
<b>Wildland Fire Engine T3 E-2055 Gun-runner</b>		<b>Randal Frasier</b>		<b>2</b>	<b>No</b>	<b>Fireline 0900</b>	<b>Fireline 2000</b>
<b>Atkinson Co. Road Dept. Motor-Grader</b>		<b>Jessie Stanfield Joey Anderson</b>		<b>2</b>	<b>No</b>	<b>Fireline 0900</b>	<b>Fireline 2000</b>
<b>Williams TF</b>		<b>Tommy Williams (TFLD)</b>		<b>(5-30) 1</b>	<b>No</b>	<b>Fireline 0900</b>	<b>Fireline 2000</b>
<b>Twiggs 86 T-6 ENG</b>		<b>Larry Rowland Bledsoe</b>		<b>(5-30) 2</b>	<b>No</b>	<b>Fireline 0900</b>	<b>Fireline 2000</b>
<b>Peach 86</b>		<b>Nick Tresco</b>		<b>2</b>	<b>No</b>	<b>Fireline 0900</b>	<b>Fireline 2000</b>
7. Control Operations <b>Hold containment lines, improve mop up into edge of bays, address hot spots, and monitor fire activity.</b>							
8. Special Instructions <b>Do not drive on canal roads due to under burning and falling trees. Be aware of snags and other hazards. For Air Support use the following UTM Coordinates 315206 East 3463551 North. For Structure Protection Support/Engines Call 911.</b>							
9. Division/Group Communication Summary							
Function	Frequency	System	Channel	Function	Frequency	System	Channel
Command		King NIFC		Logistics		King NIFC	
Tactical Div/Group	<b>168.775</b>	King NIFC	<b>USFS 9 GRP 3 Tactical 6</b>	Air to Ground	<b>169.200</b>	King NIFC	<b>12 (Air to ground)</b>
Prepared by (Resource Unit Ldr.) <b>Bill Widrig</b>		Approved by (Planning Sect. Ch.) <b>/s/ John Howard</b>			Date <b>5/23/2007</b>		Time <b>2000</b>

<b>DIVISION ASSIGNMENT LIST</b>		1. Branch <b>Roundabout</b>		2. Division/Group <b>B/C</b>			
3. Incident Name <b>Georgia Bay Complex</b>		4. Operational Period Date: <b>5/24/2007</b> Time: <b>0800 - 2000</b>					
5. Operations Personnel							
Ops Branch Director	<b>Brantley McManus</b>		Division/Group Supervisor	<b>Lucky Jones 1*18* 5198</b>			
Technical Specialist (RA)			Safety Officer	<b>Jerry Dombrovsk</b>			
6. Resources Assigned this Period							
Strike Team/Task Force/ Resource Designator	Leader	Number Persons	Trans. Needed	Drop Off PT./Time	Pick Up PT./Time		
<b>Single Resource Engine</b>							
<b>Wyoming Type 6 ENG BLM E-8</b>	<b>Kevin Moreno Jim Gates Bob Evans</b>	<b>(5/25) 3</b>	<b>No</b>	<b>Fireline 0900</b>	<b>Fireline 2000</b>		
<b>Oklahoma Type 6 ENG BIA# 8661 E-5</b>	<b>Jerry Fletcher Ron Fields Clyde Crosnoe</b>	<b>(5/26) 3</b>	<b>No</b>	<b>Fireline 0900</b>	<b>Fireline 2000</b>		
<b>JD Track Hoe</b>	<b>Quinton Dillingham</b>	<b>1</b>	<b>No</b>	<b>Fireline 0900</b>	<b>Fireline 2000</b>		
<b>DOT 5000 gal. Water Tender</b>	<b>Chad Sowell</b>	<b>1</b>	<b>No</b>	<b>Fireline 0900</b>	<b>Fireline 2000</b>		
7. Control Operations <b>Hold containment lines, improve mop up into edge of bays, address hot spots, and monitor fire activity.</b>							
8. Special Instructions <b>Do not drive on canal roads due to under burning and falling trees. Be aware of snags and other hazards. For Air Support use the following UTM Coordinates 315206 East 3463551 North. For Structure Protection Support/Engines Call 911.</b>							
9. Division/Group Communication Summary							
Function	Frequency	System	Channel	Function	Frequency	System	Channel
Command		King NIFC		Logistics		King NIFC	
Tactical Div/Group	<b>169.900</b>	King NIFC	<b>USFS 9 GRP 3 Tactical 7</b>	Air to Ground	<b>169.200</b>	King NIFC	<b>12 (air to ground)</b>
Prepared by (Resource Unit Ldr.) <b>Bill Widrig</b>		Approved by (Planning Sect. Ch.) <b>/s/ John Howard</b>		Date <b>5/23/2007</b>		Time <b>2000</b>	

DIVISION ASSIGNMENT LIST			1. Branch <b>Roundabout</b>		2. Division/Group <b>Breakout</b>		
3. Incident Name <b>Georgia Bay Complex</b>			4. Operational Period Date: <b>5/24/2007</b> Time: <b>0800– 2000</b>				
5. Operations Personnel							
Ops Branch Director		<b>Brantley McManus</b>		Division/Group Supervisor			
Technical Specialist (RA)				Safety Officer		<b>Jerry Dombrowske</b>	
6. Resources Assigned this Period							
Strike Team/Task Force/ Resource Designator		Leader		Number Persons	Trans. Needed	Drop Off PT./Time	Pick Up PT./Time
CAT D-4H DOZ3 Berrien-72		Josh Rowan		1	No	Roundabout Staging / 0900	Roundabout Staging / 2000
JD 750C DOZ2 Ware -71		Hilton Bennett		1	No	Roundabout Staging / 0900	Roundabout Staging / 2000
JD 750C DOZ2 Echols-70		Greame Treloar		1	No	Roundabout Staging / 0900	Roundabout Staging / 2000
7. Control Operations <b>Task Force 1 : Respond to and suppress breakouts and spot overs on the Roundabout fire. Stage at Roundabout Staging area and wait dispatch.</b> <b>Breakout Task Force 1 should be readily available for suppressing breakouts on the Roundabout Fire within 3 minutes after dispatch.</b>							
8. Special Instructions  <b>For Air Support use the following UTM Coordinates 315206 East 3463551 North</b> <b>For Structure Protection Support/Engines for Roundabout fire Call 911 : Also notify David Moore EMA IC (Linc# 1*11*4801) or Diane May GEMA Coordinator (Linc# 1*11*4818)</b>							
9. Division/Group Communication Summary							
Function	Frequency	System	Channel	Function	Frequency	System	Channel
Mobile to Mobile	159.390	King NIFC	Group 3 1	Logistics		King NIFC	
Mobile to Base	159.390 Rx 159.225 Tx	King NIFC	Group 3 2	Air to Ground		King NIFC	
Prepared by (Resource Unit Ldr.) <b>Bill Widrig</b>		Approved by (Planning Sect. Ch.) <b>/s/ John Howard</b>			Date <b>5/23/2007</b>		Time <b>2000</b>

NAME	POSITION	PHONE NUMBERS	FAX NUMBERS
Macon Extended Dispatch		478-751-3533	
Greg Strenkowski (Macon Extended)		478-751-3492	
Alan Dozier (GFC Protection)		478-751-3490	
Waycross—OPS & Air OPS		912-285-6039	912-285-6014
<b>Kneeknocker ICP</b>	<b>Linc 1*18*11583</b>	<b>912-462-5185</b>	<b>912-462-5189</b>
<b>Roundabout ICP</b>	<b>Linc 1*18*1001</b>	<b>912-422-3140</b>	<b>912-422-6260</b>
<b>Nahunta ICP</b>	<b>Linc 1*18*11583</b>		
Roger Browning	MUCO OSC	478-361-1962	Linc 1*18*169
<b>OTHER AGENCIES</b>		<b>PHONE #</b>	<b>SOUTHERN LINK</b>
GFC Waycross District Office	Jeremy Kent	912-287-4915	
Brantley County Fire Coordinator	Ken Lee	912-218-2012	Linc 1*44*1081
Nahunta FD Fire Chief	Button Lee	912-717-3330 / 904-699-1619	Linc 1*25*323
EMA / 911 Director	Billy Lartz	912-282-8730 / 912-217-1638	Linc 1*11*2001
Brantley County Sheriff	Robert Thomas	912-614-1658	Linc 1*25*1130
DNR ENGB, Terry Trowbridge	T. Trowbridge	(C) 912-223-2815	
DNR ENOP	Sam Williams	229-212-0124	
Atkinson EMA IC	David Moore		Linc 1*11*4801
Atkinson GEMA Coordinator	Diane May		Linc 1*11*4818
<b>COMMAND</b>		<b>912-462-5185</b>	
Reid Hildreth	IC	912-285-6046	Linc 1*18*1178
Paul Boucher (Kneeknocker)	SOF	505-574-2064	
Jerry Dombrowske (Roundabout)	SOF	912-218-9400	Linc 1*18*10120
<b>PLANS</b>		<b>912-462-5185</b>	
Bill Widrig	RESL	912-462-5185	
James Kent	SITL		Linc 1*46*2535
Marylou Dozier	DMOB	912-218-9361 fax 912-285-6079	912-285-6014
	SCKN		
Gary Vallieres	CTSP	478-550-2996	
<b>LOGISTICS</b>		<b>912-462-5287</b>	
	Dispatch	912-462-5611	
Mike Gochenour	Driver		
Chris (Woody) Woodcock	ORDM	912-462-5288	
Dick McManus	GSUL	478-550-3001	
Robert "Bob" Elliott	FACL	912-218-9574	Linc 1*18*5342
	BCM		Linc 1*18*4677
<b>OPERATIONS Kneeknocker</b>		<b>912-462-5185</b>	
Barry Chesser (Kneeknocker)	Technical Specialist	912-218-6552	Linc 1*18*4166
Steve Abbott	DIVS	770-550-1868	Linc 1*18*1628
	Technical Specialist	912-218-8344	Linc 1*18*4279
Tom Crews	STEN	404-535-2226	Linc 1*18*11725
Michael Hughes	TFLD	912-218-9510	Linc 1*18*11266
<b>OPERATIONS Roundabout</b>		<b>912-422-3140</b>	
	Technical Specialist		Linc 1*18*20684
Brantley McManus	OPD		Linc 1*18*11625
			Linc 1*18*4755
Eric Smith	STPL		Linc 1*18*9200
Rufus Crutchfield	DIVS		Linc 1*18*12585
Lucky Jones	DIVS		Linc 1*18*5198
<b>FINANCE</b>		<b>478-550-2982 or 2995</b>	



**☐ WEATHER FORECAST**

**FORECAST NO:** 35

**NAME OF FIRE:** Georgia Bay Complex

**PREDICTION FOR:** Day & Night Ops

**UNIT:** Georgia Forestry Commission

**SHIFT DATE:** Tue 05/24/07

**SIGNED:** *John Pendergrast*

**TIME AND DATE** 1800

**Incident Meteorologist**

**FORECAST ISSUED:** 05/23/07

**WEATHER DISCUSSION:** High pressure over the Carolinas will remain in place through Friday. East to Northeast winds...with higher afternoon gusts can be expected today. isolated showers are also possible.

The **main concern is:**

1. Breezy and gusty east winds in the afternoon

**WEATHER FORECAST DAY SHIFT THURSDAY:** (See table for specific incident forecasts )

**WEATHER:** Partly cloudy and becoming breezy. A 20 percent chance of showers.

**MAX TEMPERATURES:** 82 to 85 (24 hour trend ~ same)

**MIN HUMIDITY:** 38 to 42 (24 hour trend ~ 2 % higher)

**20 FT WINDS:** East 5 to 10 mph early, increasing to 10 to 15 mph with gusts to 20 mph around 1100.

Becoming East 15 to 20 mph in the afternoon.

**STABILITY/INVERSION:** Mixing heights 5500 ft. Afternoon Dispersion index around 60. Haines Index 3-4 (moderate).

	Sweet Farm Rd.	Bugaboo Scrub II	Roundabout	Knee-Knocker
Max Temperature:	82-85°	83-86°	84-87°	82-85°
Min Humidity:	34 to 42%	34-38%	32-36%	40-45%
Seabreeze Passage:	N/A	N/A	N/A	N/A

**WEATHER FORECAST NIGHT SHIFT THURSDAY NIGHT:** Breezy winds will slowly diminish after dusk.

**WEATHER:** Partly cloudy. Breezy in the early evening. A 20 percent chance of showers.

**MIN TEMPERATURES:** 60 to 63.

**MAX HUMIDITY:** Recovery around 70 percent near the fire perimeter 90 to 95 percent elsewhere.

**20 FT WINDS:** East 10 mph in the evening becoming 4 to 8 mph late.

**STABILITY/INVERSION:** No Inversion expected.

**OUTLOOK FOR FRIDAY:**

Partly cloudy and dry. Becoming breezy in the afternoon. High temperatures 82 to 85. Minimum RH values 35 to 40%. Northeast winds 4 to 8 mph during the morning becoming East 8 to 14 mph with peak gusts to 20 mph in the afternoon.

**EXTENDED: SATURDAY THROUGH TUESDAY:**

Saturday: Partly cloudy. Lows in the low 60s. Highs in the mid 80s. East to Southeast winds 5 mph increasing to 10 mph with higher gusts in an afternoon sea breeze.

Sunday through Monday: Partly cloudy with a 20 percent chance of showers. Lows in the mid 60s. highs in the upper 80s. Southeast winds 5 to 10 mph becoming gusty to 15 mph with a late sea breeze each afternoon.

Tuesday: Partly cloudy with a 20 percent chance of showers or thunderstorms. Southeast winds 5 to 10 mph with gusts to 15 mph in the afternoon.

## TAILGATE BRIEFING SHEET 2 OF 2

### SAFETY MESSAGE

Incident:

Georgia Bay Complex

Date:

May 24, 2007

Time:

Day & Night Shift

### Major Hazards and Risks:

◦ Weather

◦ Fire Behavior

◦ Snags

◦ Air Operations

◦ Reburn Potential

◦ Driving

Breezy, gusty winds can push fire even though higher humidity values are predicted. The history of this incident demands that everyone be fully aware of the predicted fire behavior. Maintain LCES at all times!

Driving continues to be priority on and off the incident. Be alert to varied speed limits in and around town and ensure that all incident personnel are in compliance with all traffic laws!

When the opportunity arises to utilize aircraft, please remember to adhere to the basic air operations safety guidelines. Ensure that communications are maintained (**know your air to ground frequency**) and that proper distance is given to working aircraft. Stay clear of all dip sites.

Predicted winds can produce snag problems, be alert when working around them. Post lookouts if needed.

Needle cast is still producing reburn potential. Keep this in consideration when evaluating escape routes and safety zones.

SAFETY OFFICERS: Michael Huffman, Mark Luellen, Ronnie Hamm, Harry Kepler, Steve Snider, Tim Sampson, John Orton, Andy Meadows, Larry Miller, Pete Stewart, Rodney Bell, Jerry Dombrowske, Paul Boucher, and Keith Jenkins

**INCIDENT ACTION PLAN SAFETY ANALYSIS**

1. Incident Name  
Georgia Bay Complex

2. Date  
5-24-07

3. Time  
0800-2000

**LCES** Analysis of Tactical Applications  
Lookouts Communications Escape routes Safety zones

Other Risk Analysis

Branch/Divisions	Indirect Fireline	Burnout Operation	Anchor Points	Extreme Conditions	Unburned Area	Snags	Reburn Potential	Road Conditions			LCES Mitigations	Traffic	Fatigue/Hydration	Communications	Multi Aircraft	Heavy Equipment	Helicopter Dip Sites	Organic Soils					Other Risk Mitigations
Sweat Farm	x	x	x	x	x	x		x	x		Lookouts posted, crews act as lookouts also, Known and identified escape routes Adequate safety zones identified Burn lights, drive alert to traffic in the dusty conditions	x	x	x	x	x	x						Tailgate briefings, Morning Briefing Refer to weather and safety message in IAP, post lookouts, stay away from dip sites, If you have questions-ASK! Drink adequate fluids, take frequent breaks
Bugaboo Scrub II	x	x	x	x	x	x		x	x		Lookouts posted, crews act as lookouts also, Known and identified escape routes Adequate safety zones identified Burn lights, drive alert to traffic in the dusty conditions	x	x	x	x	x	x						Tailgate briefings, Morning Briefing, Refer to weather and safety message in IAP, post lookouts, stay away from dip sites, If you have questions-ASK! Drink adequate fluids, take frequent breaks
Roundabout	x			x	x	x		x	x		Lookouts posted, crews act as lookouts also, Known and identified escape routes Adequate safety zones identified Burn lights, drive alert to traffic in the dusty conditions	x	x	x	x	x	x	x					Tailgate briefings, Morning Briefing, Refer to weather and safety message in IAP, post lookouts, stay away from dip sites, If you have questions-ASK! Drink adequate fluids, take frequent breaks Stay out of burn and avoid footing in white ash
Knee-knocker	x			x	x	x		x	x		Lookouts posted, crews act as lookouts also, Known and identified escape routes Adequate safety zones identified Burn lights, drive alert to traffic in the dusty conditions	x	x	x	x	x	x						Tailgate briefings, Morning Briefing, Refer to weather and safety message in IAP, post lookouts, stay away from dip sites, If you have questions-ASK! Drink adequate fluids, take frequent breaks

Prepared by (Name and Position)

Michael Huffman- Safety Officer

## Georgia Bay Complex - Bugaboo (Group 2)

INCIDENT RADIO COMMUNICATIONS PLAN		1. Incident Name <b>Georgia Bay Complex</b>		2. Date/Time Prepared <b>5- 23 -2007</b>	3. Operational Period Date/Time <b>5- 24-2007</b>
4. BASIC RADIO CHANNEL UTILIZATION					
Radio Type/Cache	Channel	Function	Frequency/Tone	Assignment	Remarks
<b>King NIFC</b>	<b>1</b>	<b>GFC Fargo Repeater</b>	<b>159.120/107.2 151.370/123.0</b>	<b>Command Rpt</b>	<b>Bugaboo Brush</b>
<b>King NIFC</b>	<b>2</b>	<b>Fire Tower Repeater</b>	<b>159.225 /203.5 151.280/203.5</b>	<b>Command Rpt</b>	<b>South of Homerville</b>
<b>King NIFC</b>	<b>3</b>	<b>GA Mutual Aid</b>	<b>154.280 154.280</b>	<b>Structural &amp; Tactical</b>	
<b>King NIFC</b>	<b>4</b>	<b>911 &amp; Structural Coordinator Rptr.</b>	<b>154.445/ 118.8 154.010/118.8</b>	<b>Emergency Traffic</b>	<b>This is a heavy traffic channel, use only for Emergency Traffic</b>
<b>King NIFC</b>	<b>5</b>	<b>Tactical</b>	<b>159.285 Rx &amp; Tx</b>	<b>Fargo Group 2</b>	<b>Southern COMPACT</b>
<b>King NIFC</b>	<b>6</b>	<b>Tactical</b>	<b>168.050 Rx &amp; Tx Narrow Band</b>	<b>Divs. E Divs. Y,Z,WB, WC</b>	<b>Fireline</b>
<b>King NIFC</b>	<b>7</b>	<b>Tactical</b>	<b>168.600 Rx &amp; Tx Narrow Band</b>	<b>Divs. G Divs. Swing/IA</b>	<b>Fireline</b>
<b>King NIFC</b>	<b>8</b>	<b>Tactical</b>	<b>164.1375 Rx &amp; Tx Narrow Band</b>	<b>Fargo Group 3 Divs. WA, EE,EF,EG,EH</b>	<b>Fireline</b>
<b>King NIFC</b>	<b>9</b>	<b>Tactical</b>	<b>168.775 Rx &amp; Tx Narrow Band</b>	<b>Divs.H Divs. EA,EB,EC,ED</b>	<b>Fireline</b>
<b>King NIFC</b>	<b>10</b>	<b>Tactical</b>	<b>169.900 Rx &amp; Tx Narrow Band</b>	<b>Divs. I, J, K Divs. E,AA,BB,CC,DD</b>	<b>Fireline</b>
<b>King NIFC</b>	<b>11</b>	<b>Tactical</b>	<b>168.200 Rx &amp; Tx Narrow Band</b>	<b>Divs.A,B,C,D ICP Group, Fargo Group 1 DivWD,WE,WF,WG,WH</b>	<b>Fireline</b>
<b>King NIFC</b>	<b>12</b>	<b>Air to Ground</b>	<b>167.950 167.950/110.9 Narrow Band</b>	<b>Federal Air to Ground</b>	
<b>King NIFC</b>	<b>13</b>	<b>Air To Ground</b>	<b>159.390 Rx &amp; Tx</b>	<b>Georgia Air to Ground</b>	
<b>King NIFC</b>	<b>14</b>	<b>Air Guard</b>	<b>168.625 168.625/110.9 Narrow Band</b>	<b>Air Emergency Only</b>	<b>Air Emergency Only</b>
5. Prepared By (Communications Unit) <b>LARRY SHARPE/ COML</b>					



## Georgia Bay Complex – Kneeknocker/Roundabout (Group 3)

INCIDENT RADIO COMMUNICATIONS PLAN		1. Incident Name <b>Georgia Bay Complex</b>		2. Date/Time Prepared <b>5- 23 -2007</b>	3. Operational Period Date/Time <b>5- 24-2007</b>
4. BASIC RADIO CHANNEL UTILIZATION					
Radio Type/Cache	Channel	Function	Frequency/Tone	Assignment	Remarks
<b>King NIFC</b>	<b>1</b>	<b>Mobile to Mobile</b>	<b>159.390 RX &amp; Tx</b>	<b>Breakout</b>	<b>Kneeknocker &amp; Roundabout</b>
<b>King NIFC</b>	<b>2</b>	<b>Mobile to Base</b>	<b>159.390 Rx 159.225 Tx</b>	<b>Breakout</b>	<b>Kneeknocker &amp; Roundabout</b>
<b>King NIFC</b>	<b>3</b>	<b>GA Mutual Aid</b>	<b>154.280 154.280</b>	<b>Race Track Fire</b>	<b>Structural &amp; Tactical</b>
<b>King NIFC</b>	<b>4</b>	<b>Tactical</b>	<b>159.285 Rx &amp; Tx</b>	<b>As needed</b>	<b>Southeastern Compact</b>
<b>King NIFC</b>	<b>5</b>	<b>Tactical</b>	<b>164.1375 Rx &amp; Tx</b>		
<b>King NIFC</b>	<b>6</b>	<b>Tactical</b>	<b>168.775 Rx &amp; Tx</b>	<b>Roundabout AD</b>	
<b>King NIFC</b>	<b>7</b>	<b>Tactical</b>	<b>169.900 Rx &amp; Tx</b>	<b>Roundabout BC</b>	
<b>King NIFC</b>	<b>8</b>	<b>Tactical</b>	<b>168.200 Rx &amp; Tx</b>	<b>Kneeknocker</b>	
<b>King NIFC</b>	<b>9</b>	<b>Tactical</b>	<b>159.270 Rx &amp; Tx</b>	<b>Ft. Mudge Fire</b>	<b>Red Channel</b>
<b>King NIFC</b>	<b>10</b>	<b>Tactical</b>	<b>159.420 Rx &amp; Tx</b>	<b>Forest Drive Fire</b>	<b>White Channel</b>
<b>King NIFC</b>	<b>11</b>	<b>Tactical</b>	<b>159.330 Rx &amp; Tx</b>		<b>Blue Channel</b>
<b>King NIFC</b>	<b>12</b>	<b>Air to Ground</b>	<b>169.200 Rx &amp; Tx</b>	<b>Kneeknocker</b>	<b>Air to Ground Dedicated to this complex</b>
<b>King NIFC</b>	<b>13</b>	<b>Air Guard</b>	<b>168.625 168.625/110.9 Narrow Band</b>	<b>Air Emergency Only</b>	<b>Air Emergency Only</b>
<b>King NIFC</b>	<b>14</b>	<b>Knee Repeater</b>	<b>159.465 Rx 151.145 Tx</b>	<b>Command Repeater</b>	<b>Kneeknocker only</b>
5. Prepared By (Communications Unit) <b>LARRY SHARPE/ COML</b>					

## Georgia Bay Complex – Sweat Farm (Group 1)

INCIDENT RADIO COMMUNICATIONS PLAN		1. Incident Name <b>Georgia Bay Complex</b>		2. Date/Time Prepared <b>5- 23-2007</b>	3. Operational Period Date/Time <b>5- 24-2007</b>
4. BASIC RADIO CHANNEL UTILIZATION					
Radio Type/Cache	Channel	Function	Frequency/Tone	Assignment	Remarks
<b>King NIFC</b>	<b>1</b>	<b>Command Ware EMA Repeater</b>	<b>158.7825/162.2 153.7625/162.2 Narrow Band</b>	<b>Command Rpt</b>	<b>Sweat Farm</b>
<b>King NIFC</b>	<b>2</b>	<b>Fire Tower Repeater</b>	<b>159.225 /203.5 151.280/203.5</b>	<b>Command Rpt</b>	<b>South of Homerville</b>
<b>King NIFC</b>	<b>3</b>	<b>GA Mutual Aid</b>	<b>154.280 154.280</b>	<b>Structural &amp; Tactical</b>	
<b>King NIFC</b>	<b>4</b>	<b>911 &amp; Structural Coordinator Rptr.</b>	<b>154.445/ 118.8 154.010/118.8</b>	<b>Emergency Traffic</b>	<b>This is a heavy traffic channel, use only for Emergency Traffic</b>
<b>King NIFC</b>	<b>5</b>	<b>Tactical</b>	<b>159.285 Rx &amp; Tx</b>	<b>Fargo Group 2</b>	<b>Southern COMPACT</b>
<b>King NIFC</b>	<b>6</b>	<b>Tactical</b>	<b>168.050 Rx &amp; Tx Narrow Band</b>	<b>Divs. E Divs. Y,Z,WB, WC</b>	<b>Fireline</b>
<b>King NIFC</b>	<b>7</b>	<b>Tactical</b>	<b>168.600 Rx &amp; Tx Narrow Band</b>	<b>Divs. G Divs. Swing/IA</b>	<b>Fireline</b>
<b>King NIFC</b>	<b>8</b>	<b>Tactical</b>	<b>164.1375 Rx &amp; Tx Narrow Band</b>	<b>Fargo Group 3 Divs. WA, EE,EF,EG,EH</b>	<b>Fireline</b>
<b>King NIFC</b>	<b>9</b>	<b>Tactical</b>	<b>168.775 Rx &amp; Tx Narrow Band</b>	<b>Divs. H Divs. EA,EB,EC,ED</b>	<b>Fireline</b>
<b>King NIFC</b>	<b>10</b>	<b>Tactical</b>	<b>169.900 Rx &amp; Tx Narrow Band</b>	<b>Divs. I, J, K Divs. E,AA,BB,CC,DD</b>	<b>Fireline</b>
<b>King NIFC</b>	<b>11</b>	<b>Tactical</b>	<b>168.200 Rx &amp; Tx Narrow Band</b>	<b>Divs.A,B,C,D ICP Group, Fargo Group 1 DivWD,WE,WF,WG,WH</b>	<b>Fireline</b>
<b>King NIFC</b>	<b>12</b>	<b>Air to Ground</b>	<b>167.950 167.950/110.9 Narrow Band</b>	<b>Federal Air to Ground</b>	
<b>King NIFC</b>	<b>13</b>	<b>Air To Ground</b>	<b>159.390 Rx &amp; Tx</b>	<b>Georgia Air to Ground</b>	
<b>King NIFC</b>	<b>14</b>	<b>Air Guard</b>	<b>168.625 168.625/110.9 Narrow Band</b>	<b>Air Emergency Only</b>	<b>Air Emergency Only</b>
5. Prepared By (Communications Unit) <b>LARRY SHARPE/ COML</b>					





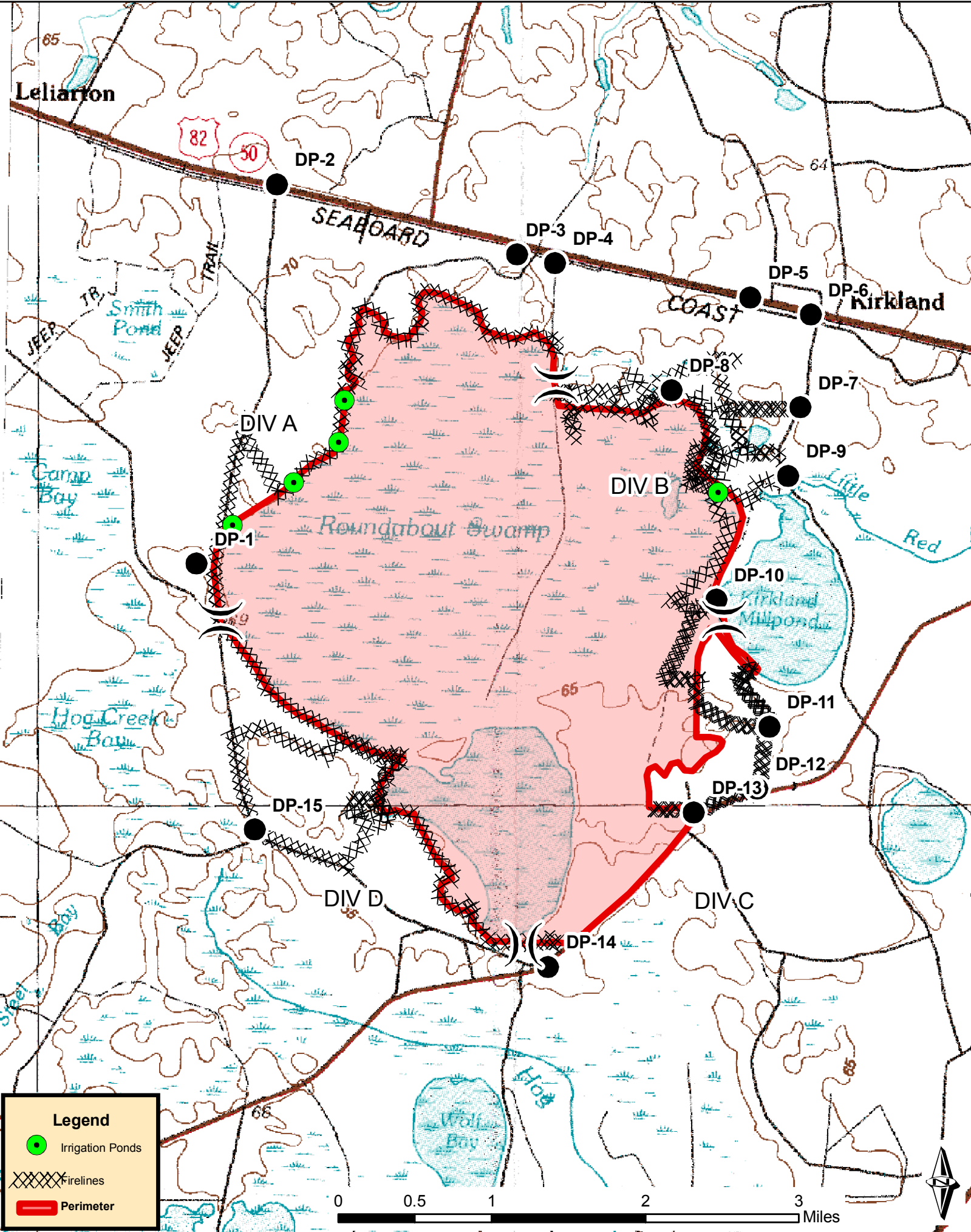
AIR OPERATIONS SUMMARY		PREPARED BY: Bob Seigler		PREPARED DATE/TIME 5/23//07 1600	
1. INCIDENT NAME: Georgia Bay Complex		2. OPERATIONAL PERIOD: Day Shift 5/24/07		START TIME: 0700	END TIME: 2000
				SUNRISE: 0629	SUNSET: 2023
3. REMARKS (Safety Notes, Hazards, Air Operations Special Equipment, etc.): Waycross Helibase—31 14.95 X 82 23.73 Pogo Helibase-30 44.25 X 82 07.69 ICP Helispot 31 07.23 X 82 15.23 ALL AIRTANKER REQUESTS THRU OKEE DISPATCH <ul style="list-style-type: none"> <li>• Avoid take-off / landing over ICP,</li> <li>• All dispatches will come through the ICP in Waycross for state aviation resources,</li> <li>• High Towers in Area,</li> <li>• LOOK UP, LOOK DOWN, LOOK ALL AROUND,</li> <li>• Aircraft Dispatching Priorities: <ul style="list-style-type: none"> <li>1. Life</li> <li>2. Structures Threatened</li> <li>3. Initial Attack</li> <li>4. Fire threatening perimeter control lines</li> </ul> </li> </ul>				4. MEDEVAC A/C: N17HX—Pogo Helibase	5. TFR: In Place Radius: Rectangle to 3000 MSL_  Altitude: _3000= MSL NW corner Lat 31 09 02 Long 82 32 04 SE corner Lat 30 53 17 Long 82 02 48:
6. PERSONNEL		7. FREQUENCIES	AM	FM	8. FIXED-WING # Avail / Type/ Make-Model / FAA N# / Base(s)
AOBD: Bob Seigler	Phone 828-231-4560	AIR/AIR FW:	122.575 E/sd 122.825 scdry 122.925 GA IA 123.125 W/sd		Airtankers @ 00-Type I LCQ OCF 20-Type I 22-Type I 09-Type II 43-Type I 21-Type I
ATGS: L.Mars—Waycross		AIR/AIR RW:	122.575 E/sd 123.125 W/sd		Leadplanes Lead B-2 ASM Lead 1-4
State Aviation Lead Waycross Airport Mike Leverette		AIR/GROUND:	122.925	151.145 GA IA 167.950 Swt. Farm	Base FAX #:
ASGS: Ray Dew		COMMAND:			ATGS Aircraft 90K—Beach Baron—L. Mars 01Q—Cessna 401—K. Walsh 82-Z—King Air—C.Cross Lake City
Waycross HEBM: Dave Langley	505-240-3649	COMMAND RPT	Rx:	Tx:	Other Flight follow with Pogo Helibase or Waycross Helibase IA Air Attack for State--- Cessna 182's and UH 60's Bell 407-Chopper 7 Approved Helispots—Refer to Okefenokee NWR Despite Map One GNG Helicopter will remain at Waycross Airport for IA at all times ALL AIRCRAFT Call Air Attack when entering TFR--- Waycross Helibase will call Pogo as a back up!!! ALL FLIGHTS WILL BE CLEARED WITH AOBD 107Z - IR-RW Cobra
ATB MGR:		DECK FREQ:			
Braganza Helispot HESM: Wayne Langston Dip Site Mgr: Walter Thompson		TOLC FREQ:	Rx: 151.145 Tx: 151.145		
Pogo Helibase	912-496-4415	FLIGHT FOLLOW		RX 164.625 TX 163.150 TONE 103.5	
Waycross Helibase	912-338-5982				
Fargo Helibase—(Golf Course) N 30 41 27.3 x W 82 34 02.0 Stephen Foster SP (Pocket) N 30 47 32.2 x W 82 22 39..6					

9. HELICOPTERS (Use Additional Sheets As Necessary)													
FAA N#	TY	MAKE/MODEL	BASE	AVAIL	START	REMARKS	FAA N#	TY	MAKE/MODEL	BASE	AVAIL	START	REMARKS
N5BH	I	Sikorsky S-70A-27	Pogo	0900	0930	Bucket Drops	N5738Y	III	Bell 206	Pogo	0900	0930	Recon/ Admin/ IA
N4503E	I	Sikorsky S-61N	Pogo	0900	0930	Bucket drops	N12HX	III	Bell 407	Pogo	0900	0930	Admin/ Recon
N15HX	II	Bell 205++	Pogo	0900	0930	Bucket drops	Chopper 7	III	Bell 407	Waycross	0900	0930	State IA-Bucket drops as needed
N17HX II	II	BELL 205++	Pogo	0900	0930	Bucket Drops	90K	I	Baron	Waycross	0900	0930	ATGS
	I	UH-60	Waycross	0900	0930	IA for State	62-Z	I	King Air	Lake City	0800	0930	ATGS
	I	UH-60	Waycross	0900	0930	IA for State							
01Q	i	Cessna 401	Waycross	0900	0930	ATGS							
		Cessna 182	Waycross	0900	0930	Aerial Detection							

10. TASK/MISSION/ASSIGNMENT (Type/Function includes: Air Tactical, Retardant, Recon, Personnel Transport, Water Dropping, S&R, etc.)						
TYPE/FUNCTION	NAME OF PERSONNEL OR CARGO (if applicable) OR INSTRUCTIONS FOR TACTICAL AIRCRAFT			MISSION START	FLY FROM	FLY TO
Type II Helicopter	Operation and Logistic Support			0930	Helibase	Fire and Return
Type III Helicopter	Operation and Logistic Support			0930	Helibase	Fire and Return
Type I Helicopter	Operation and Logistic Support			0930	Helibase	Fire and Return
ATGS Platforms	Aerial Supervision of all Aircraft over Incidents			0930	Waycross Airport & Lake City	Fire and Return
State Detection Fixed Wing	Aerial Detection and IA for New Fire Starts			0930	Waycross Airport	Fire and Return

<b>ICS-206</b> <b>MEDICAL PLAN</b>	1. Incident Name <b>Georgia Bay Complex</b>	2. Date Prepared <b>5/23/07</b>	3. Time Prepared <b>1200</b>	4. Operational Period <b>5/24/07</b> <b>DAY &amp; NIGHT SHIFT</b>				
<b>5. Incident Medical Aid Station</b>								
Medical Aid Stations		Location		Paramedics				
				Yes    No				
Medical Unit Georgia Bay	912-218-9101	Georgia Forestry Headquarters ICP - Carswell (MEDL)		EMT				
Medical Unit Fargo		Fargo Base – Anderson (MEDL)		X    EMT				
<b>6. Transportation</b>								
<b>A. Ambulance Services</b>								
Name		Address		Phone				
				Paramedics				
				Yes    No				
Ware County EMS		Waycross Georgia (911 to activate)		912-281-9467 Linc 1*96*116				
Charlton Memorial EMS		1203 N Third St Folkston Ga (911 to activate)		888-255-4961 Linc 1*25*3468				
Clinch County EMS		Fargo (911 to activate)						
<b>Air Ambulance Service</b>								
Trauma 1		Jacksonville, FL (26 min/air)		1-800-223-4878				
AirMed		Augusta, GA (2 hrs/air)		1-888-792-9245				
Lifeflight (155.340)		Jacksonville, FL (35 min/air)		1-877-870-7779				
<b>B. Incident Ambulances</b>								
Name		Location		Paramedics				
				Yes    No				
Ware County EMS		Fargo (Fargo Unit – 41 First Street – Fargo, GA 31631)		X				
<b>7. Hospitals</b>								
Name	Address	Travel Time		Phone	Helipad		Burn Center	
		Air	Grnd		Yes	No	Yes	No
Charlton Memorial	1203 N 3 <sup>rd</sup> St Folkston N 30°50.8 W 82°00.1	10 min	20 min.	912-496-2531	X			X
Satilla Regional	410 Darling Ave Waycross Ga N 31°13.56 W 82°21.058	15 min	30 min	912-283-3030	X			X
Shands Hospital (level I)	Jacksonville, FL N 30°20 97 W 82° 13 992	45 min	1.5 hrs	800-223-4878	X		X	
Memorial Hospital	Savannah, GA 4700 Waters 3200.7 8107.6	40 min		912-350-8999	X			X
Shands Burn Center	Gainesville, FL 38.33 N 082 20.73W	45 min		352-265-0300	X		X	
Doctor's Hospital Joseph Still Burn Center	August, GA (Chief Burn Ctr 3328.943 8205.422	90 min	3 ½ hrs	877-863-9595 706-863-9595	X		X	
<b>8. Medical Emergency Procedures</b>								
<p><b>Identify any EMT's and Paramedics in your crews.</b>  <b>All medical emergencies will be reported to the Division Supervisor who will assume command.</b></p> <p>1) Provide medical care &amp; stabilize patient.  2) Call 911  3) Notify Communications via radio over Command Channel.  4) Communications will clear radio traffic for medical emergency.  5) Notify Dispatch, provide ONE on site contact person, notify dispatch if that changes</p> <ul style="list-style-type: none"> <li>o Provide location (road intersection, GPS coordinates).</li> <li>o Number of patients</li> <li>o Type of injury or illness – Is it life threatening? Provide vital signs if available.</li> <li>o EMT's on scene and/or needed</li> <li>o Type of transportation needed</li> </ul> <p>6) Com will notify ambulance and coordinate with IC, SOF, MEDL</p>								
<div style="border: 3px double black; padding: 10px; width: fit-content; margin: auto;"> <p><b>*CREW EMT'S (ALL LEVELS) WILL FUNCTION AS FIRST RESPONDERS UNLESS SPECIFICALLY ASSIGNED TO THE INCIDENT AS A LINE MEDIC</b></p> </div>								
<p><b>Helibase – ICP Waycross: 31 07.23 X 82 15.23</b>  <b>Helispots – Fargo Base Camp: 30 47 30.02 X 82 22 39.5 (4 mi mrker Hwy 177 – Stephen C. Foster St. Prk) H-114</b>  <b>and 30 41.739 X 82 33.961 (Hwy 441 - golf course) H-113</b></p>								
9. Prepared by (Medical Unit Leader) <b>(GA) Robert Carswell (T) (912) 218-9101 Linc 1*18*7480</b> <b>(NC) Wayne Williams (919) 801-4264</b>			10. Reviewed by (Safety Officer) <b>(NC) Mike Huffman (919) 218-9060</b>					

# Roundabout Fire - Atkinson County, GA



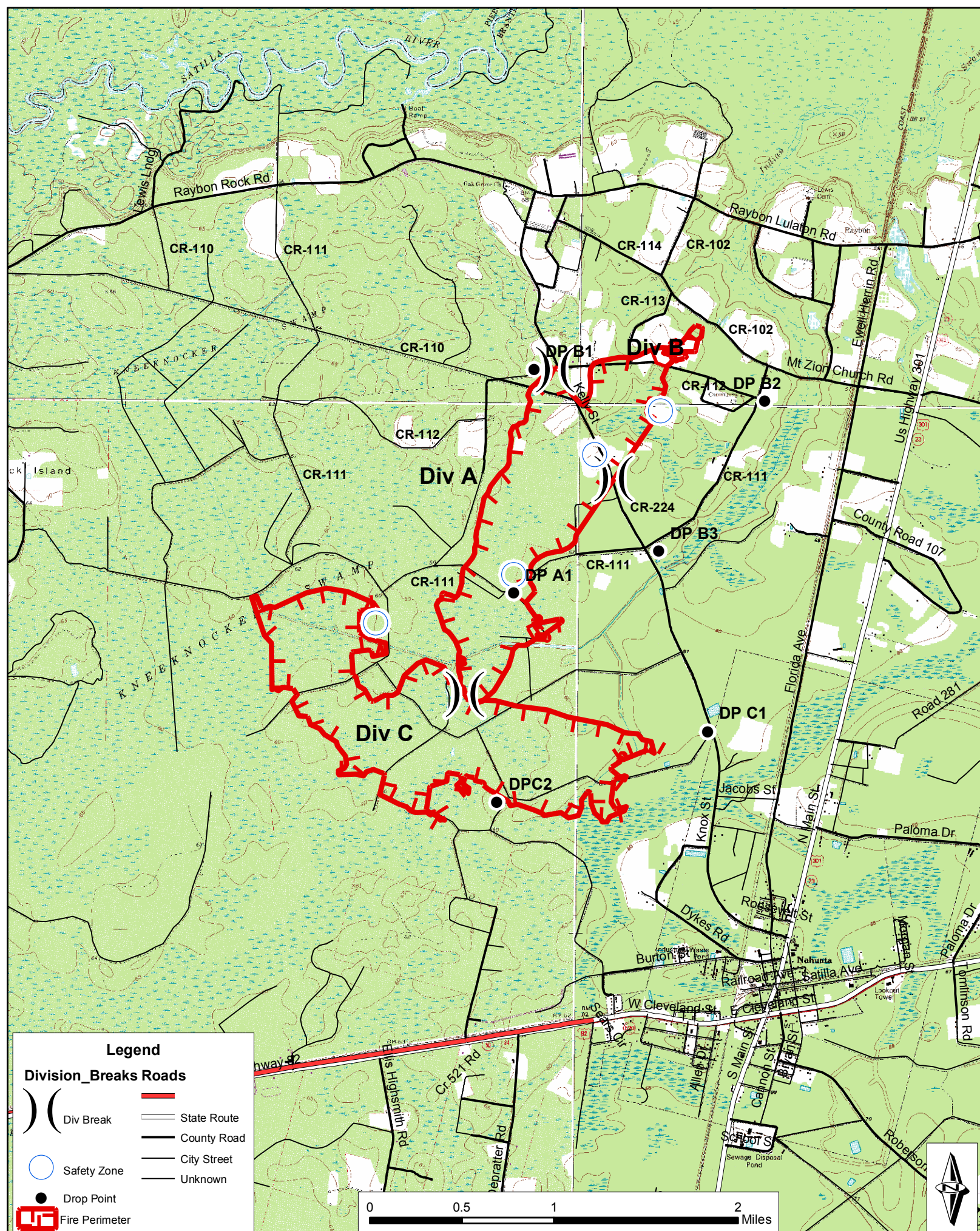
**Legend**

- Irrigation Ponds
- Firelines
- Perimeter



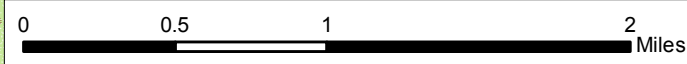


# KneeKnocker Fire - Brantley County, GA



## Legend

- Division\_Breaks Roads**
- Div Break
  - Fire Perimeter
  - State Route
  - County Road
  - City Street
  - Unknown
  - Safety Zone
  - Drop Point



## IMPORTANT FINANCE INFORMATION

ALL CREW TIME REPORTS AND EMERGENCY EQUIPMENT SHIFT TICKETS SHOULD BE TURNED IN TO FINANCE AT THE END OF EACH SHIFT ON A DAILY BASIS. SUPERVISORS SIGNING THESE TIME REPORTS SHOULD ENSURE THE FOLLOWING:

- **PLEASE WRITE THE FIRE NAME YOU ARE WORKING ON YOUR CTR'S AND/OR SHIFT TICKETS – THIS IS VERY IMPORTANT FOR FEMA REIMBURSEMENT.**
- **THE “O” NUMBER SHOULD BE LISTED ON THE CREW TIME REPORT**
- **COMPLETE 1 (one) CREW TIME REPORT FOR EACH PERSON WITH AN “O” NUMBER**
- **“E” NUMBERS SHOULD BE LISTED ON THE EMERGENCY EQUIPMENT SHIFT TICKET(S)**
- **CORRECT DATES ARE IMPERATIVE!**
- **SUPERVISORS – PLEASE REVIEW THE CTR'S/SHIFT TICKET'S YOU ARE ASKED TO SIGN**

