



# Georgia Bay Complex Kneeknocker Fire RoundaboutFire

*Incident Action Plan*  
*Saturday*  
**May 26, 2007**



**GEMA**

<b>INCIDENT OBJECTIVES</b>	1. Incident Name <b>Georgia Bay Complex</b>	2. Date Prepared 5/25/07	3. Time Prepared 1830
4. Operational Period 05/26/2007 Day and Swing Shift			
5. General Control Objectives For The Incident (Include Alternatives) <ol style="list-style-type: none"> <li>1. Provide for the safety of the public and assigned incident resources through effective hazard / risk assessment and mitigation.</li> <li>2. Provide timely and accurate information updates to the GFC, cooperators, affected communities, and other stakeholders.</li> <li>3. Provide accurate cost accountability and documentation of expenditures for the duration of the incident.</li> <li>4. Develop and maintain coordination with local fire departments, local EOC directors, GEMA, other IMT's deployed in the area, GOAL, and private industry.</li> <li>5. Provide support on initial and extended attack fires as requested by the 2 Southeast Georgia GFC districts.</li> <li>6. Conduct all incident activities in a manner free of discriminating harrassment and imappropriate behavior.</li> <li>7. Keep the Sweat Farm Road and Bugaboo Scrub II fires: <ul style="list-style-type: none"> <li>• South of US 84 (Valdosta Highway)</li> <li>• East of a network of improved roads extending along Road 4 and Jordan Ford Road as connected by CR 149, continuing to Suwannee Chapel Road to Hwy. 84.</li> <li>• North of timber company Road #29</li> <li>• East of Swamp Perimeter Rd.</li> </ul> </li> <li>8. Keep the Kneeknocker and Roundabout fires within the current established fire lines / perimeters.</li> </ol>			
6. Weather Forecast For Period			
<b><u>WEATHER FORECAST DAY SHIFT SATURDAY:</u></b>			
<b>WEATHER:</b> Partly cloudy and warm. Isolated morning sprinkles.			
<b>MAX TEMPERATURES:</b> 83 to 86 (24 hour trend ~ 3 deg higher)			
<b>MIN HUMIDITY:</b> 35 to 39 (24 hour trend ~ 4% lower)			
<b>20 FT WINDS:</b> Light wind becoming East 5 to 10 mph near 11am then 10 mph gusts to 15 mph after 3 pm.			
<b>STABILITY/INVERSION:</b> Mixing heights 6000 ft. Afternoon Dispersion index around 65. Haines Index 4 (moderate).			
7. General Safety Message			
<b>SEE ATTACHED SAFETY MESSAGE.</b>			
8. ATTACHEMENTS (X IF ATTACHED)			
<input checked="" type="checkbox"/> Organization List - ICS 203	<input checked="" type="checkbox"/> Division Assignment List - ICS 204	<input checked="" type="checkbox"/> Phone List	
<input checked="" type="checkbox"/> Fire Behavior Forecast	<input checked="" type="checkbox"/> Air Ops Summary-ICS 220	<input checked="" type="checkbox"/> Maps	
<input checked="" type="checkbox"/> Weather Forecast	<input checked="" type="checkbox"/> Communications Plan - ICS 205	<input checked="" type="checkbox"/> Unit Log- ICS 214	
<input checked="" type="checkbox"/> Safety Message	<input checked="" type="checkbox"/> Medical Plan - ICS 206	<input type="checkbox"/>	
<input checked="" type="checkbox"/> Incident Action Plan Safety Analysis -ICS 215	<input type="checkbox"/>	<input type="checkbox"/>	
9. Prepared By (Planning Section Chief)	10. Approved By (Incident Commander)		
<i>/S/ John Howard/Don Watson</i>	<i>/S/ Reid Hildreth/Dan Brandon</i>		



ORGANIZATION ASSIGNMENT LIST		9. Operations Section	
1. Incident Name		Chief	Lee Burwell
Georgia Bay Complex Kneeknocker and Roundabout		Chief	John Nichols
2. Date	3. Time	a. Branch Kneeknocker - Divisions/Groups	
May 25, 2007	1700	Operations BD	Brantley McManus
		Technical Specialist	Barry Chesser
4. Operational Period			
May 26, 2007 0800-2000 Day Shift		Division/Group	Kneeknocker Steve Abbott
5. Incident Commander and Staff			
Incident Commander	Reid Hildreth		
Deputy	Dan Brandon		
Safety Officer	J. Dombrowske, P. Boucher		
Camp IC (MUCS)	Matt Plagenz		
6. Agency Representatives			
Agency	Name		
GFC District 8	Frank Sorrells		
GFC District 10	Willard Fell		
GFC Protection Dept.	Alan Dozier		
GEMA	Alan Robinson	b. Branch Roundabout - Divisions/Groups	
		Operations BD	Brantley McManus
7. Planning Section			
		Technical Specialist	
Chief	John Howard		
		Division/Group	A/D Rufus Clutchfield
Resource Unit	Bill Widrig	Division/Group	B/C Lucky Jones
Situation Unit		Division/Group	
		Division/Group	
Status Check-in	Chris Liv (t)	Breakout Task Force 1	
Computer Tech	Gary Vallieres	c. Branch III - Divisions/Groups	
Documentation Unit	Annie Lott	Branch Director	
Fire Investigator		Deputy	
Demob Unit	Dennis Sharp	Division/Group	
GIS		Division/Group	
Infrared Interpreter		Division/Group	
		Division/Group	
8. Logistics Section		d. Air Operations Branch	
Chief	Troy Cleland	Air Operations BD	P.J. Pearson
Chief (t)	Travis Ruff	Air Attack Supervisor	
Supply Unit	Keith Walters	Air Support Supervisor	
Ground Support	Dick McManus		
Facilities Unit			
Food Unit		GFC Air Operations	Mike Leverette
Base Camp Manager		Air Tanker Coordinator	Rick Gicla
Ordering Manager		10. Finance Section	
Equipment Manager		Chief	Robin Nimura
Communications Unit	Adam Koeller	Deputy	
Technical Specialist		Time Unit Leader	Paula Stevens/Vern Lowther (T)
Driver		Equipment Time Recorder	
		Personnel Timer Recorder	
		Comp / Claims	Larry Lee/ Eileen Crouse
		Procurement	Steven Teves (t)
		Cost	Roger Siemers
Admin. Asst.	Kim Cohen (Kneeknocker)	Prepared by (Resource Unit Leader)	
Admin. Asst.	Jessica Giddens (Roundabout)	<b>Bill Widrig</b>	

<b>DIVISION ASSIGNMENT LIST</b>		1. Branch <b>Kneeknocker</b>		2. Division/Group <b>All Divisions</b>			
3. Incident Name <b>Georgia Bay Complex</b>		4. Operational Period Date: <b>05/26/2007</b> Time: <b>0800-2000</b>					
5. Operations Personnel							
Operations Branch Director	<b>Brantley McManus</b>		Technical Specialist (RA)		<b>Barry Chesser</b>		
Group Supervisor	<b>Steve Abbott 5/28</b>		Safety Officer		<b>Paul Boucher</b>		
6. Resources Assigned This Period							
Strike Team/Task Force/ Resource Designator	Leader	Number Persons	Trans Needed	Drop Off PT/Time	Pick Up PT/Time		
<b>STEN</b>	<b>Tom Crews (STEN)</b>	(5/30) 1	No	Fireline 0900	Fireline 1900		
Colorado Type 6 ENG San Isabel NF E-9	Alex Rudney (ENGB) Robert Dickamore Justin M. Campbell	(5/26) 3	No	Fireline 0900	Fireline 1900		
Arizona Type 6 ENG Lakeside Brush 212 E-12	Corey Valichnac (ENGB) Jason Todora Jake Valichnac	(5/27) 3	No	Fireline 0900	Fireline 1900		
<b>Breakout</b>							
<b>North Carolina Task Force</b>	<b>Micheal Huges(TFLD)</b> ENG# 760 T6 E-5190	(5/27) 1	No	Kneeknocker Staging 0900	Kneeknocker Staging 2000		
JD 750 DOZ2 E-5194	Jason O'neal	(5/27) 1	No	Kneeknocker Staging 0900	Kneeknocker Staging 2000		
CAT D5H DOZ3 E-5195	Bobby Phelps	(5/27) 1	No	Kneeknocker Staging 0900	Kneeknocker Staging 2000		
CAT D5H DOZ3 E-5193	James Scott	(5/27) 1	No	Kneeknocker Staging 0900	Kneeknocker Staging 2000		
Engine Type 6 ENG# 740 E-5191	Ferrell Banks	(5/27) 1	No	Kneeknocker Staging 0900	Kneeknocker Staging 2000		
Engine Type 6 ENG# 761 E-5198	Christopher Smith	(5/27) 1	No	Kneeknocker Staging 0900	Kneeknocker Staging 2000		
Engine Type 6 ENG# 1356 E-5199	Chris Holyfield	(5/27) 1	No	Kneeknocker Staging 0900	Kneeknocker Staging 2000		
NC Service Truck w/Mechanic E-5192	Jeff McPherson	(5/27) 1	No	Kneeknocker Staging 0900	Kneeknocker Staging 2000		
<b>MUC Task Force 4</b>	<b>Garry Atteberry 1*18*627</b>	<b>46</b>	<b>NO</b>	<b>Fireline 0900</b>	<b>Fireline 1900</b>		
7. Operations <b>Hold line, improve mop up, and monitor fire activity for Kneeknocker using MUC 4 .</b>							
8. Special Instructions <b>For Air Support use the following UTM Coordinates: Kneeknocker E 04014, N 34558 For structure protection call 911!</b>							
9. Division/Group Communication Summary							
Function	Frequency	System	Channel	Function	Frequency	System	Channel
Command				Logistics			
Tactical Div/Group	<b>168.200</b>	<b>GRP 3 Tactical</b>	<b>8</b>	Air to Ground	<b>169.200</b>		<b>12</b>
Prepared By (Resource Unit Leader) <b>Bill Widrig</b>		Approved By (Planning Sect. Ch.) <b>/s/ John Howard</b>		Date <b>05/25/07</b>		Time <b>1730</b>	

<b>DIVISION ASSIGNMENT LIST</b>			1. Branch <b>Roundabout</b>		2. Division/Group <b>A/D</b>		
3. Incident Name <b>Georgia Bay Complex</b>			4. Operational Period Date: <b>05/26/2007</b> Time: <b>0800- 2000</b>				
5. Operations Personnel							
Ops Branch Director		<b>Brantley McManus</b>		Division/Group Supervisor		<b>Rufus Crutchfield 6/4</b>	
Technical Specialist (RA)				Safety Officer		<b>Jerry Dombrowske</b>	
6. Resources Assigned this Period							
Strike Team/Task Force/ Resource Designator		Leader		Number Persons	Trans. Needed	Drop Off PT./Time	Pick Up PT./Time
<b>Arkansas T-3 TP TF</b>		<b>Eric Smith (STPL) 1*18*9200</b>		<b>(6-5) 1</b>	<b>No</b>	<b>Fireline 0900</b>	<b>Fireline 2000</b>
<b>JD 650 DOZ4 SO-22831</b>		<b>D. Pope/ R. Lane</b>		<b>(5-31) 2</b>	<b>No</b>	<b>Fireline 0900</b>	<b>Fireline 2000</b>
<b>CAT D-5G DOZ3 SO-23568</b>		<b>J. Johnston/ T. Phillips</b>		<b>(5-31) 2</b>	<b>No</b>	<b>Fireline 0900</b>	<b>Fireline 2000</b>
<b>Cat D-5 LGP DOZ3 SO-23562</b>		<b>J. Hoopengartner/ J. Williams</b>		<b>(5-31) 2</b>	<b>No</b>	<b>Fireline 0900</b>	<b>Fireline 2000</b>
<b>Wildland Engine T3 E-2055 Gun-runner Skidgine</b>		<b>Randal Frasier</b>		<b>2</b>	<b>No</b>	<b>Fireline 0900</b>	<b>Fireline 2000</b>
<b>Williams TF</b>		<b>Tommy Williams (TFLD)</b>		<b>(5-30) 1</b>	<b>No</b>	<b>Fireline 0900</b>	<b>Fireline 2000</b>
<b>Twiggs 86 T-6 ENG</b>		<b>Larry Rowland Bledsoe</b>		<b>(5-30) 2</b>	<b>No</b>	<b>Fireline 0900</b>	<b>Fireline 2000</b>
<b>Peach 86</b>		<b>Nick Tresco Danny Gore</b>		<b>(6/5) 2 (6/6)</b>	<b>No</b>	<b>Fireline 0900</b>	<b>Fireline 2000</b>
7. Control Operations <b>Hold containment lines, improve mop up into edge of bays, address hot spots, and monitor fire activity.</b>							
8. Special Instructions <b>Do not drive on canal roads due to under burning and falling trees. Be aware of snags and other hazards. For Air Support use the following UTM Coordinates 315206 East 3463551 North. For Structure Protection Support/Engines Call 911.</b>							
9. Division/Group Communication Summary							
Function	Frequency	System	Channel	Function	Frequency	System	Channel
Command		King NIFC		Logistics		King NIFC	
Tactical Div/Group	<b>168.775</b>	King NIFC	<b>USFS 9 GRP 3 Tactical 6</b>	Air to Ground	<b>169.200</b>	King NIFC	<b>12</b>
Prepared by (Resource Unit Ldr.) <b>Bill Widrig</b>		Approved by (Planning Sect. Ch.) <b>/s/ John Howard</b>			Date <b>5/25/2007</b>		Time <b>2000</b>

<b>DIVISION ASSIGNMENT LIST</b>			1. Branch <b>Roundabout</b>		2. Division/Group <b>B/C</b>		
3. Incident Name <b>Georgia Bay Complex</b>			4. Operational Period Date: <b>5/26/2007</b> Time: <b>0800 - 2000</b>				
5. Operations Personnel							
Ops Branch Director		<b>Brantley McManus</b>		Division/Group Supervisor		<b>Lucky Jones 1*18* 5198</b>	
Technical Specialist (RA)				Safety Officer		<b>Jerry Dombrowske</b>	
6. Resources Assigned this Period							
Strike Team/Task Force/ Resource Designator		Leader		Number Persons	Trans. Needed	Drop Off PT./Time	Pick Up PT./Time
<b>Single Resource Engine</b>							
<b>Oklahoma Type 6 ENG BIA# 8661 E-5</b>		<b>Jerry Fletcher Ron Fields Clyde Crosnoe</b>		<b>(6/2) 3</b>	<b>No</b>	<b>Fireline 0900</b>	<b>Fireline 2000</b>
<b>JD Track Hoe</b>		<b>Quinton Dillingham</b>		<b>1</b>	<b>No</b>	<b>Fireline 0900</b>	<b>Fireline 2000</b>
<b>DOT 5000 gal. Water Tender</b>		<b>Chad Sowell</b>		<b>1</b>	<b>No</b>	<b>Fireline 0900</b>	<b>Fireline 2000</b>
7. Control Operations <b>Hold containment lines, improve mop up into edge of bays, address hot spots, and monitor fire activity.</b>							
8. Special Instructions <b>Do not drive on canal roads due to under burning and falling trees. Be aware of snags and other hazards. For Air Support use the following UTM Coordinates 315206 East 3463551 North. For Structure Protection Support/Engines Call 911.</b>							
9. Division/Group Communication Summary							
Function	Frequency	System	Channel	Function	Frequency	System	Channel
Command		King NIFC		Logistics		King NIFC	
Tactical Div/Group	<b>169.900</b>	King NIFC	<b>USFS 9 GRP 3 Tactical 7</b>	Air to Ground	<b>169.200</b>	King NIFC	<b>12 (air to ground)</b>
Prepared by (Resource Unit Ldr.) <b>Bill Widrig</b>		Approved by (Planning Sect. Ch.) <b>/s/ John Howard</b>			Date <b>5/25/2007</b>		Time <b>2000</b>

<b>DIVISION ASSIGNMENT LIST</b>				<b>1. Branch Roundabout</b>		<b>2. Division/Group Breakout</b>	
3. Incident Name <b>Georgia Bay Complex</b>				4. Operational Period Date: <b>5/26/2007</b> Time: <b>0800– 2000</b>			
5. Operations Personnel							
Ops Branch Director		<b>Brantley McManus</b>		Division/Group Supervisor			
Technical Specialist (RA)				Safety Officer		<b>Jerry Dombrowske</b>	
6. Resources Assigned this Period							
Strike Team/Task Force/ Resource Designator		Leader		Number Persons	Trans. Needed	Drop Off PT./Time	Pick Up PT./Time
<b>CAT D-4H DOZ3 Berrien-72</b>		<b>Josh Rowan</b>		<b>(5/26) 1</b>	<b>No</b>	<b>Roundabout Staging / 0900</b>	<b>Roundabout Staging / 2000</b>
<b>JD 750C DOZ2 Ware -71</b>		<b>Hilton Bennett</b>		<b>(5/26) 1</b>	<b>No</b>	<b>Roundabout Staging / 0900</b>	<b>Roundabout Staging / 2000</b>
<b>JD 750C DOZ2 Echols-70</b>		<b>Greame Treloar</b>		<b>(5/26) 1</b>	<b>No</b>	<b>Roundabout Staging / 0900</b>	<b>Roundabout Staging / 2000</b>
7. Control Operations <b>Task Force 1 : Respond to and suppress breakouts and spot overs on the Roundabout fire. Stage at Roundabout Staging area and wait dispatch.</b> <b>Breakout Task Force 1 should be readily available for suppressing breakouts on the Roundabout Fire within 3 minutes after dispatch.</b>							
8. Special Instructions  <b>For Air Support use the following UTM Coordinates 315206 East 3463551 North</b> <b>For Structure Protection Support/Engines for Roundabout fire Call 911 : Also notify David Moore EMA IC (Linc# 1*11*4801) or Diane May GEMA Coordinator (Linc# 1*11*4818)</b>							
9. Division/Group Communication Summary							
Function	Frequency	System	Channel	Function	Frequency	System	Channel
Mobile to Mobile	<b>159.390</b>	King NIFC	<b>Group 3 1</b>	Logistics		King NIFC	
Mobile to Base	<b>159.390 Rx 159.225 Tx</b>	King NIFC	<b>Group 3 2</b>	Air to Ground	<b>169.200</b>	King NIFC	<b>12</b>
Prepared by (Resource Unit Ldr.) <b>Bill Widrig</b>		Approved by (Planning Sect. Ch.) <b>/s/ John Howard</b>			Date <b>5/25/2007</b>		Time <b>2000</b>



NAME	POSITION	PHONE NUMBERS	FAX NUMBERS
Macon Extended Dispatch		478-751-3533	
Greg Strenkowski (Macon Extended)		478-751-3492	
Alan Dozier (GFC Protection)		478-751-3490	
Waycross—OPS & Air OPS		912-285-6039	912-285-6014
<b>Kneeknocker ICP</b>	<b>Linc 1*18*11583</b>	<b>912-462-5185</b>	<b>912-462-5189</b>
<b>Roundabout ICP</b>	<b>Linc 1*18*1001</b>	<b>912-422-3140</b>	<b>912-422-6260</b>
<b>Nahunta ICP</b>	<b>Linc 1*18*11583</b>		
Roger Browning	MUCO OSC	478-361-1962	Linc 1*18*169
<b>OTHER AGENCIES</b>		<b>PHONE #</b>	<b>SOUTHERN LINK</b>
GFC Waycross District Office	Jeremy Kent	912-287-4915	
Brantley County Fire Coordinator	Ken Lee	912-218-2012	Linc 1*44*1081
Nahunta FD Fire Chief	Button Lee	912-717-3330 / 904-699-1619	Linc 1*25*323
EMA / 911 Director	Billy Lartz	912-282-8730 / 912-217-1638	Linc 1*11*2001
Brantley County Sheriff	Robert Thomas	912-614-1658	Linc 1*25*1130
DNR ENGB, Terry Trowbridge	T. Trowbridge	(C) 912-223-2815	
DNR ENOP	Sam Williams	229-212-0124	
Atkinson EMA IC	David Moore		Linc 1*11*4801
Atkinson GEMA Coordinator	Diane May		Linc 1*11*4818
<b>COMMAND</b>		<b>912-462-5185</b>	
Reid Hildreth	IC	912-285-6046	Linc 1*18*1178
Paul Boucher (Kneeknocker)	SOF	505-574-2064	
Jerry Dombrowske (Roundabout)	SOF	912-218-9400	Linc 1*18*10120
<b>PLANS</b>		<b>912-462-5185</b>	
Bill Widrig	RESL	912-462-5185	
James Kent	SITL		Linc 1*46*2535
Dennis Sharp	DMOB	501-337-3130 fax 912-285-6079	912-285-6014
	SCKN		
Gary Vallieres	CTSP	478-550-2996	
<b>LOGISTICS</b>		<b>912-462-5287</b>	
	Dispatch	912-462-5611	
Mike Gochenour	Driver		
Dick McManus	GSUL	478-550-3001	
Dick McManus	FACL	478-550-3001	
	BCM		Linc 1*18*4677
<b>OPERATIONS Kneeknocker</b>		<b>912-462-5185</b>	
Barry Chesser (Kneeknocker)	Technical Specialist	912-218-6552	Linc 1*18*4166
Steve Abbott	DIVS	770-550-1868	Linc 1*18*1628
	Technical Specialist	912-218-8344	Linc 1*18*4279
Tom Crews	STEN	404-535-2226	Linc 1*18*11725
Michael Hughes	TFLD	912-218-9510	Linc 1*18*11266
<b>OPERATIONS Roundabout</b>		<b>912-422-3140</b>	
	Technical Specialist		Linc 1*18*20684
Brantley McManus	OPD		Linc 1*18*11625
			Linc 1*18*4755
Eric Smith	STPL		Linc 1*18*9200
Rufus Crutchfield	DIVS		Linc 1*18*12585
Lucky Jones	DIVS		Linc 1*18*5198
<b>FINANCE</b>		478-550-2982 or 2995	912-285-6014

# TAILGATE BRIEFING SHEET

Signature/Date

## ☐ WEATHER FORECAST

FORECAST NO: 37

NAME OF FIRE: Georgia Bay Complex

PREDICTION FOR: Day &amp; Night Ops

UNIT: Georgia Forestry Commission

SHIFT DATE: Sat 05/26/07

SIGNED: *John Pendergrast*

TIME AND DATE 1800

Incident Meteorologist

FORECAST ISSUED: 05/25/07

**WEATHER DISCUSSION:** A high pressure ridge over South Carolina will slowly weaken while moving offshore this weekend. East winds will increase by midday with occasional gusts to 15 mph in the afternoon.

The main concern is:

1. Ongoing dry conditions.

### **WEATHER FORECAST DAY SHIFT SATURDAY:** (See table for specific incident forecasts )

**WEATHER:** Partly cloudy and warm. Isolated morning sprinkles.**MAX TEMPERATURES:** 83 to 86 (24 hour trend ~ 3 deg higher)**MIN HUMIDITY:** 35 to 39 (24 hour trend ~ 4% lower)**20 FT WINDS:** Light wind becoming East 5 to 10 mph near 11am then 10 mph gusts to 15 mph after 3 pm.**STABILITY/INVERSION:** Mixing heights 6000 ft. Afternoon Dispersion index around 65. Haines Index 4 (moderate).

	Sweat Farm Rd.	Bugaboo Scrub II	Roundabout	Knee-Knocker
Max Temperature:	83-86°	83-86°	85-88°	82-85°
Min Humidity:	35 to 39%	34-38%	32-36%	38-43%
Seabreeze Passage:	Weak 1600	Weak 1600	1700	1500

### **WEATHER FORECAST NIGHT SHIFT SATURDAY NIGHT:** East winds will diminish by 10 pm.

**WEATHER:** Partly cloudy.**MIN TEMPERATURES:** 61 to 64.**MAX HUMIDITY:** Recovery around 70 percent near the fire perimeter 95 to 100 percent elsewhere.**20 FT WINDS:** East 4 to 8 mph in the evening becoming calm late.**STABILITY/INVERSION:** Moderate to Strong inversion below 400 ft. smoke movement W to SW. Dispersion 2.

### **OUTLOOK FOR SUNDAY:**

Partly cloudy and warm. High temperatures 85 to 88. Minimum RH values 32 to 35%. Southeast winds 4 to 8 mph during the morning increasing to 8 to 13 mph with peak gusts to 18 mph in the afternoon.

**EXTENDED: MONDAY THROUGH THURSDAY:** Weak high pressure centered just north of Georgia will remain in place through the period. Continued dry weather is expected most of the week.

Monday and Tuesday: Partly cloudy and warm. Lows in the mid 60s. highs in the upper 80s. Southeast winds 5 to 10 mph with gusts to 15 mph in a late sea breeze each afternoon.

Wednesday and Thursday: Partly cloudy with a 20 percent chance of showers or thunderstorms. Southeast winds 5 to 10 mph with gusts to 15 mph in the afternoon.

# TAILGATE BRIEFING SHEET

## SAFETY MESSAGE

Incident:

Georgia Bay Complex

Date:

May 26, 2007

Time:

Day & Night Shift

### Major Hazards and Risks:

◦ Weather

◦ Air Operations

◦ Accountability

◦ Fire Behavior

◦ Driving

◦ Complacency

◦ Reburn Potential

◦ Holiday Traffic

Fire behavior is predicted to be less intense today. Winds will be gusty in the afternoon and can still push the fire. Remain aware, plan and act accordingly. Maintain LCES at all times!

Know and account for personnel assigned to you and ensure you make contact with them. Crews also make the connection with your supervisor. **Receive a briefing prior to line assignments!**

Utilization of aircraft in these conditions requires everyone to be heads up, please remember to adhere to the basic air operations safety guidelines. Ensure that communications are maintained (know you're air to ground frequency) and that proper distance is given to working aircraft.

Memorial Day weekend is upon us, so expect heavier traffic and congestion on major highways as well as "sight seers" interested in the fire show.

Stop! Look! Listen! Live! Watch for multiple tracks at railroad crossings where there are no traffic guards.

Reburns are still a potential. Evaluate escape routes and safety zones with this in mind.

Complacency may be starting to rear its ugly head as minor accidents are beginning. Wear PPE's; including goggles when mopping up for complete protection from debris blowback when spraying spots. Be aware of what's happening near you!

SAFETY OFFICERS: Michael Huffman, Mark Luellen, Ronnie Hamm, Harry Kepler, Steve Snider, Tim Sampson, John Orton, Andy Meadows, Larry Miller, Pete Stewart, Rodney Bell, Jerry Dombrowske, Paul Boucher, and Keith Jenkins

## Fire Behavior Forecast

<b><u>Forecast No. 36</u></b>	<b><u>Prediction for Day Shift</u></b>
<b><u>Name of Fire: Ga Bay Complex /Sweat Farm Rd.</u></b>	<b><u>Shift Date: Saturday May 26, 2007</u></b>
<b><u>Time and Date Forecast Issued</u></b> <b><u>1800 hrs 5/25/2007</u></b>	<b><u>Signed : Gary Curcio</u></b> <b><u>Fire Behavior Analyst</u></b>

**Weather Summary (See Today's Detailed Weather Forecast in the IAP):**

The RH recovery is still not at a level where it needs to be. So again, there was no meaningful impact to fuel moistures. We very fortunate yesterday to avoid extreme fire behavior for most of the day. Moderate surface winds, a "non-adverse" Fire Behavior wind profile, & a surprising cloud cover that persisted through most of the peak burning period and reduced fuel temperatures, all acted together to reduce the opportunity for extreme fire behavior. This lasted until 1700hrs. With breaking of cloud cover & rising fuel temps, the fire spotted Suwannee Chapel Rd.

**For today's forecasted weather the windspeed is very favorable: early AM windspeed is < 5mph, eventually becoming E 5-10mph by 1100hrs & then, reaching a Max E 10mph @ 1500hrs. Air temps will reach 83 – 88 with RH's ranging from 32 - 43%.**

With these windspeeds & other factors, fire behavior is not expected to be extreme. Beneficial cloud cover will be a key component for success.

**General Fire Behavior:** Yesterday's spotting of Suwannee Chapel Road was assisted by the breaking cloud cover & wind gusts > 12mph. For today, we are anticipating fire behavior that will capped in the morning until the inversion burns off. After inversion, the following behavior is expected:

<b><u>Fuels type</u></b>	<b><u>Spread</u></b>	<b><u>Flame</u></b>	<b><u>Spotting</u></b>
Young plantation 4 to 7ft tall	30 ch/hr	8 –12 ft.	500 ft.
Pine Plantation w/ southern rough	10 ch/hr	4 – 6 ft.	500 ft.

**Specific Fire Behavior:**

Any new spot fires or slop-overs need to be promptly initial attacked. This action does not allow fires to build & thereby, allow their energy to define the fire environment. Fire flanks can be safely worked. Prompt & timely use of aerial resources can assist and ensure success in this effort. If there are unforeseen delays in suppression & building smoke column occurs, then there are opportunities for extreme fire behavior where fires can spread at 45 ch/hr., with 15-ft flame lengths and spotting up to ¼ mi.

**Roundabout & Kneeknocker Fires:** Are becoming less a threat for sleepers or reburn potential. Kneeknocker still has persistent organic soil areas burning. The lowering of the forecasted windspeeds, will further reduce the risk of these fires.

**Initial Attack:** Fuels are still critically dry. New spot fires or breakovers can reach a critical level if allowed to build. Prompt, successful initial attack will eliminate this possibility.

**Air Operations:** Moderate inversion & the smoke can limit aircraft visibility in the morning. Smoke production is still expected & visibility will improve as winds pick up. The western perimeters of the fires will be impacted by smoke production.

**Safety:** As fire behavior begins to transition to more normal levels, it is extremely important to be more observant. Take the time through the day to assess what is changing and why. Do not let your guard down.





## Georgia Bay Complex – Sweat Farm (Group 1)

INCIDENT RADIO COMMUNICATIONS PLAN		1. Incident Name <b>Georgia Bay Complex</b>		2. Date/Time Prepared <b>5- 25-2007</b>	3. Operational Period Date/Time <b>5- 26-2007</b>
4. BASIC RADIO CHANNEL UTILIZATION					
Radio Type/Cache	Channel	Function	Frequency/Tone	Assignment	Remarks
<b>King NIFC</b>	<b>1</b>	<b>Command Ware EMA Repeater</b>	<b>158.7825/162.2 153.7625/162.2 Narrow Band</b>	<b>Command Rpt</b>	<b>Sweat Farm</b>
<b>King NIFC</b>	<b>2</b>	<b>Fire Tower Repeater</b>	<b>159.225 /203.5 151.280/203.5</b>	<b>Command Rpt</b>	<b>South of Homerville</b>
<b>King NIFC</b>	<b>3</b>	<b>GA Mutual Aid</b>	<b>154.280 154.280</b>	<b>Structural &amp; Tactical</b>	
<b>King NIFC</b>	<b>4</b>	<b>911 &amp; Structural Coordinator Rptr.</b>	<b>154.445/ 118.8 154.010/118.8</b>	<b>Emergency Traffic</b>	<b>This is a heavy traffic channel, use only for Emergency Traffic</b>
<b>King NIFC</b>	<b>5</b>	<b>Tactical</b>	<b>159.285 Rx &amp; Tx</b>	<b>Divs. WH, WI, WJ</b>	<b>Southern COMPACT</b>
<b>King NIFC</b>	<b>6</b>	<b>Tactical</b>	<b>168.050 Rx &amp; Tx Narrow Band</b>	<b>Divs. E, WE, WF, WG, WS</b>	<b>Fireline</b>
<b>King NIFC</b>	<b>7</b>	<b>Tactical</b>	<b>168.600 Rx &amp; Tx Narrow Band</b>	<b>Divs. WB, WC, WD, WP Swing/IA SWEAT FARM NIGHT</b>	<b>Fireline</b>
<b>King NIFC</b>	<b>8</b>	<b>Tactical</b>	<b>164.1375 Rx &amp; Tx Narrow Band</b>	<b>Divs. WA, WK, WL, WM</b>	<b>Fireline</b>
<b>King NIFC</b>	<b>9</b>	<b>Tactical</b>	<b>168.775 Rx &amp; Tx Narrow Band</b>	<b>Divs. H, WN, WO, WQ, WR, WT--PREP GROUP BUGABOO NIGHT</b>	<b>Fireline</b>
<b>King NIFC</b>	<b>10</b>	<b>Tactical</b>	<b>169.900 Rx &amp; Tx Narrow Band</b>	<b>Divs. I, J, K , WV</b>	<b>Fireline</b>
<b>King NIFC</b>	<b>11</b>	<b>Tactical</b>	<b>168.200 Rx &amp; Tx Narrow Band</b>	<b>Divs.A,B,C,D,WU Manor Group SWEAT FARM BREAKOUT</b>	<b>Fireline</b>
<b>King NIFC</b>	<b>12</b>	<b>Air to Ground</b>	<b>167.950 167.950/110.9 Narrow Band</b>	<b>Federal Air to Ground</b>	
<b>King NIFC</b>	<b>13</b>	<b>Air To Ground</b>	<b>159.390 Rx &amp; Tx</b>	<b>Georgia Air to Ground</b>	<b>INITIAL ATTACK</b>
<b>King NIFC</b>	<b>14</b>	<b>Air Guard</b>	<b>168.625 168.625/110.9 Narrow Band</b>	<b>Air Emergency Only</b>	<b>Air Emergency Only</b>
5. Prepared By (Communications Unit) <b>LARRY SHARPE/ COML</b>					

## Georgia Bay Complex - Bugaboo (Group 2)

INCIDENT RADIO COMMUNICATIONS PLAN		1. Incident Name <b>Georgia Bay Complex</b>		2. Date/Time Prepared <b>5- 25 -2007</b>	3. Operational Period Date/Time <b>5- 26-2007</b>
4. BASIC RADIO CHANNEL UTILIZATION					
Radio Type/Cache	Channel	Function	Frequency/Tone	Assignment	Remarks
<b>King NIFC</b>	<b>1</b>	<b>GFC Fargo Repeater</b>	<b>159.120/107.2 151.370/123.0</b>	<b>Command Rpt</b>	<b>Bugaboo Brush</b>
<b>King NIFC</b>	<b>2</b>	<b>Fire Tower Repeater</b>	<b>159.225 /203.5 151.280/203.5</b>	<b>Command Rpt</b>	<b>South of Homerville</b>
<b>King NIFC</b>	<b>3</b>	<b>GA Mutual Aid</b>	<b>154.280 154.280</b>	<b>Structural &amp; Tactical</b>	
<b>King NIFC</b>	<b>4</b>	<b>911 &amp; Structural Coordinator Rptr.</b>	<b>154.445/ 118.8 154.010/118.8</b>	<b>Emergency Traffic</b>	<b>This is a heavy traffic channel, use only for Emergency Traffic</b>
<b>King NIFC</b>	<b>5</b>	<b>Tactical</b>	<b>159.285 Rx &amp; Tx</b>	<b>Divs. WH, WI, WJ</b>	<b>Southern COMPACT</b>
<b>King NIFC</b>	<b>6</b>	<b>Tactical</b>	<b>168.050 Rx &amp; Tx Narrow Band</b>	<b>Divs. E, WE, WF, WG, WS</b>	<b>Fireline</b>
<b>King NIFC</b>	<b>7</b>	<b>Tactical</b>	<b>168.600 Rx &amp; Tx Narrow Band</b>	<b>Divs. WB, WC, WD, WP, Swing I/A SWEAT FARM NIGHT</b>	<b>Fireline</b>
<b>King NIFC</b>	<b>8</b>	<b>Tactical</b>	<b>164.1375 Rx &amp; Tx Narrow Band</b>	<b>Divs. WA, WK, WL, WM</b>	<b>Fireline</b>
<b>King NIFC</b>	<b>9</b>	<b>Tactical</b>	<b>168.775 Rx &amp; Tx Narrow Band</b>	<b>Divs.H, WN, WO, WQ, WR, WT—PREP ROUP BUGABOO NIGHT</b>	<b>Fireline</b>
<b>King NIFC</b>	<b>10</b>	<b>Tactical</b>	<b>169.900 Rx &amp; Tx Narrow Band</b>	<b>Divs. I, J, K, WV</b>	<b>Fireline</b>
<b>King NIFC</b>	<b>11</b>	<b>Tactical</b>	<b>168.200 Rx &amp; Tx Narrow Band</b>	<b>Divs.A,B,C,D,WU ManorGroup SWEAT FARM NIGHT</b>	<b>Fireline</b>
<b>King NIFC</b>	<b>12</b>	<b>Air to Ground</b>	<b>167.950 167.950/110.9 Narrow Band</b>	<b>Federal Air to Ground</b>	
<b>King NIFC</b>	<b>13</b>	<b>Air To Ground</b>	<b>159.390 Rx &amp; Tx</b>	<b>Georgia Air to Ground</b>	<b>INITIAL ATTACK</b>
<b>King NIFC</b>	<b>14</b>	<b>Air Guard</b>	<b>168.625 168.625/110.9 Narrow Band</b>	<b>Air Emergency Only</b>	<b>Air Emergency Only</b>
5. Prepared By (Communications Unit) <b>LARRY SHARPE/ COML</b>					



## Georgia Bay Complex – Kneeknocker/Roundabout (Group 3)

INCIDENT RADIO COMMUNICATIONS PLAN		1. Incident Name <b>Georgia Bay Complex</b>		2. Date/Time Prepared <b>5- 25 -2007</b>	3. Operational Period Date/Time <b>5- 26-2007</b>
4. BASIC RADIO CHANNEL UTILIZATION					
Radio Type/Cache	Channel	Function	Frequency/Tone	Assignment	Remarks
<b>King NIFC</b>	<b>1</b>	<b>Mobile to Mobile</b>	<b>159.390 RX &amp; Tx</b>	<b>Breakout</b>	<b>Kneeknocker &amp; Roundabout</b>
<b>King NIFC</b>	<b>2</b>	<b>Mobile to Base</b>	<b>159.390 Rx 159.225 Tx</b>	<b>Breakout</b>	<b>Kneeknocker &amp; Roundabout</b>
<b>King NIFC</b>	<b>3</b>	<b>GA Mutual Aid</b>	<b>154.280 154.280</b>	<b>Race Track Fire</b>	<b>Structural &amp; Tactical</b>
<b>King NIFC</b>	<b>4</b>	<b>Tactical</b>	<b>159.285 Rx &amp; Tx</b>	<b>As needed</b>	<b>Southeastern Compact</b>
<b>King NIFC</b>	<b>5</b>	<b>Tactical</b>	<b>164.1375 Rx &amp; Tx</b>		
<b>King NIFC</b>	<b>6</b>	<b>Tactical</b>	<b>168.775 Rx &amp; Tx</b>	<b>Roundabout AD</b>	
<b>King NIFC</b>	<b>7</b>	<b>Tactical</b>	<b>169.900 Rx &amp; Tx</b>	<b>Roundabout BC</b>	
<b>King NIFC</b>	<b>8</b>	<b>Tactical</b>	<b>168.200 Rx &amp; Tx</b>	<b>Kneeknocker</b>	
<b>King NIFC</b>	<b>9</b>	<b>Tactical</b>	<b>159.270 Rx &amp; Tx</b>	<b>Ft. Mudge Fire</b>	<b>Red Channel</b>
<b>King NIFC</b>	<b>10</b>	<b>Tactical</b>	<b>159.420 Rx &amp; Tx</b>	<b>Forest Drive Fire</b>	<b>White Channel</b>
<b>King NIFC</b>	<b>11</b>	<b>Tactical</b>	<b>159.330 Rx &amp; Tx</b>		<b>Blue Channel</b>
<b>King NIFC</b>	<b>12</b>	<b>Air to Ground</b>	<b>169.200 Rx &amp; Tx</b>	<b>Kneeknocker</b>	<b>Air to Ground Dedicated to this complex</b>
<b>King NIFC</b>	<b>13</b>	<b>Air Guard</b>	<b>168.625 168.625/110.9 Narrow Band</b>	<b>Air Emergency Only</b>	<b>Air Emergency Only</b>
<b>King NIFC</b>	<b>14</b>	<b>Knee Repeater</b>	<b>159.465 Rx 151.145 Tx /114.8</b>	<b>Command Repeater</b>	<b>Kneeknocker only</b>
5. Prepared By (Communications Unit) <b>LARRY SHARPE/ COML</b>					

<b>MEDICAL PLAN</b>	1. Incident Name <b>Georgia Bay Complex</b>	2. Date Prepared <b>5/25/07</b>	3. Time Prepared <b>1500</b>	4. Operational Period <b>5/26/07</b> <b>DAY &amp; NIGHT SHIFT</b>			
5. Incident Medical Aid Station							
Medical Aid Stations		Location		Paramedics Yes No			
Medical Unit Georgia Bay	912-218-9101	Georgia Forestry Headquarters ICP - Carswell (MEDL)			EMT		
Medical Unit Fargo		Fargo Welcome Center – Anderson (MEDL)		Yes	EMT		
6. Transportation							
A. Ambulance Services							
Name	Address		Phone	Paramedics Yes No			
Ware County EMS	Waycross Georgia (911 to activate)		912-281-9467 Linc 1*96*116	Yes			
Charlton Memorial EMS	1203 N Third St Folkston Ga (911 to activate)		888-255-4961 Linc 1*25*3468	Yes			
Fargo EMS Staging Unit	Fargo (911 to activate)		Ask for Fargo Staging EMS	Yes			
Air Ambulance Service							
Trauma 1	Jacksonville, FL (26 min/air)		1-800-223-4878	Yes			
AirMed	Augusta, GA (2 hrs/air)		1-888-792-9245	Yes			
Lifeflight (155.340)	Jacksonville, FL (35 min/air)		1-877-870-7779	Yes			
B. Incident Ambulances							
Name	Location			Paramedics Yes No			
Ware County EMS	Fargo (Fargo Unit – 41 First Street – Fargo, GA 31631)			Yes			
7. Hospitals							
Name	Address	Travel Time Air Ground		Phone	Helipad Yes No	Burn Center Yes No	
Charlton Memorial	1203 N 3 <sup>rd</sup> St Folkston N 30°50.8 W 82°00.1	10 min	20 min.	912-496-2531	Yes	No	
Satilla Regional	410 Darling Ave Waycross Ga N 31°13.56 W 82°21.058	15 min	30 min	912-283-3030	Yes	No	
Shands Hospital (level I)	Jacksonville, FL N 30°20 97 W 82° 13 992	45 min	1.5 hrs	800-223-4878	Yes	Yes	
Memorial Hospital	Savannah, GA 4700 Waters 3200.7 8107.6	40 min		912-350-8999	Yes	No	
Shands Burn Center	Gainesville, FL 38.33 N 082 20.73W	45 min		352-265-0300	Yes	Yes	
Doctor's Hospital Joseph Still Burn Center	August,GA (Chief Burn Ctr 3328.943 8205.422	90 min	3 ½ hrs	877-863-9595 706-863-9595	Yes	Yes	
8. Medical Emergency Procedures							
Identify any EMT's and Paramedics in your crews. All medical emergencies will be reported to the Division Supervisor who will assume command.				<b>INJURY REPORTING PROCESS:</b>			
1. Provide medical care & stabilize patient.				Nature of Injury: _____			
2. Call 911				Location of Patient: _____			
3. Notify Communications via radio over Command Channel.				Transportation Requested by: Air ___ Ground ___			
4. Communications will clear radio traffic for medical emergency.				Pick Up Point: _____			
5. Notify Dispatch, provide ONE on site contact person, notify dispatch if that changes				Lat _____ Long _____			
<ul style="list-style-type: none"> <li>• Provide location (road intersection, GPS coordinates).</li> <li>• Number of patients</li> <li>• Type of injury or illness – Is it life threatening? Provide vital signs if available.</li> <li>• EMT's on scene and/or needed</li> <li>• Type of transportation needed</li> </ul>				Patient Unit ID: _____			
6. Com will notify ambulance and coordinate with IC, SOF, MEDL				Is an EMT w/Patient: Yes ___ No ___			
<b>Helibase – ICP Waycross: 31 07.23 X 82 15.23</b> <b>Helispots – Fargo Base Camp:</b> <b>H-114 (4 mi marker Hwy 177 – Stephen C. Foster St. Prk) 30 47 30.02 X 82 22 39.5</b> <b>H-113 (Hwy 441 - golf course) 30 41.739 X 82 33.961</b>				Age: _____ Sex: Male ___ Female ___			
				<b>MAJOR EMERGENCIES – Secure the area and identify witness for later investigation. Keep an accurate log of events.</b>			
				<b>NOTE: Do not give Patients Name over the radio.</b>			
Prepared by (Medical Unit Leader) <b>(GA) Robert Carswell (T) (912) 218-9101 Linc 1*18*7480</b> <b>(NC) Wayne Williams (919) 801-4264</b>			10. Reviewed by (Safety Officer) <b>(NC) Mike Huffman (919) 218-9060</b>				

AIR OPERATIONS SUMMARY		PREPARED BY: Bob Seigler		PREPARED DATE/TIME 5/25/07 1900	
1. INCIDENT NAME: Georgia Bay Complex		2. OPERATIONAL PERIOD: Day Shift 5/26/07		START TIME: 0700	END TIME: 2000
				SUNRISE: 0628	SUNSET: 2024
3. REMARKS (Safety Notes, Hazards, Air Operations Special Equipment, etc.): Waycross Helibase—31 14.95 X 82 23.73 Pogo Helibase-30 44.25 X 82 07.69 Braganza Helispot 31 07.23 X 82 15.23 <b>AIR TANKER REQUESTS THRU POGO</b> <ul style="list-style-type: none"> <li>Avoid take-off / landing over ICP</li> <li>All dispatches will come through the ICP in Waycross for state aviation resources.</li> <li>High Towers in Area,</li> <li>LOOK UP, LOOK DOWN, LOOK ALL AROUND</li> <li>Aircraft Dispatching Priorities: <ul style="list-style-type: none"> <li>1. Life</li> <li>2. Structures Threatened</li> <li>3. Initial Attack</li> <li>4. Fire threatening perimeter control lines</li> </ul> </li> </ul>				4. MEDEVAC A/C: N17HX—Pogo Helibase	5. TFR: In Place Radius: Rectangle to 3000 MSL_  Altitude: _3000= MSL NW corner Lat 31 09 02 Long 82 32 04 SE corner Lat 30 53 17 Long 82 02 48:
6. PERSONNEL		7. FREQUENCIES	AM	FM	8. FIXED-WING # Avail / Type/ Make-Model / FAA N# / Base(s)
AOBD: Bob Seigler	Phone 828-231-4560  ICP FAX: 912-285-6014	AIR/AIR FW:	122.575 E/sd 122.825 scdry 122.925 GA IA 123.125 W/sd		Airtankers @ 06-Type I LCQ & OCF 20-Type I 22-Type I 09-Type II 43-Type I 21-Type I
ATGS: T. Dorigan—Waycross		AIR/AIR RW:	122.575 E/sd 123.125 W/sd 122.925 GA IA		Leadplanes Lead B-2 ASM Lead 1-4  Base FAX #:
State Aviation Lead Waycross Airport Mike Leverette		AIR/GROUND:		151.145 GA IA 167.950 Swt. Farm	ATGS Aircraft 90K—Beach Baron—T. Dorigan 0EB—King Air—C. Cross Lake City
ASGS: Ray Dew	478-550-2990	COMMAND:			Other
Waycross HEBM: Dave Langley	505-240-3649	COMMAND RPT	Rx:	Tx:	Flight follow with Pogo Helibase or Waycross Helibase IA Air Attack for State--- Cessna 182's and UH 60's Bell 407-Chopper 7 Approved Helispots—Refer to Okefenokee NWR Despite Map One GNG Helicopter will remain at Waycross Airport for IA at all times ALL AIRCRAFT Call Air Attack when entering TFR---
ATB MGR:		DECK FREQ:			
Braganza Helispot		TOLC FREQ:			
HESM: Wayne Langston	919-920-4906	Rx: 151.145			
Dip Site Mgr: Walter Thompson	803-221-1081	Tx: 151.145			
Pogo Helibase	912-496-4415	FLT FOLLOWING:		RX	
Davis Helibase	912-496-3765	Pogo Helibase		164.625	
Waycross Helibase	912-338-5982	Waycross Helibase		TX	
				163.150	
				TONE	
				103.5	

<b>Fargo Helibase—(Golf Course)</b> N 30 41 27.3 x W 82 34 02.0 <b>Stephen Foster SP (Pocket)</b> N 30 47 32.2 x W 82 22 39..6					<b>Waycross Helibase will call Pogo as a back up!!!</b> <b>ALL FLIGHTS WILL BE CLEARED WITH AOB</b> <b>107Z - IR-RW Cobra</b>
---	--	--	--	--	---

**9. HELICOPTERS (Use Additional Sheets As Necessary)**

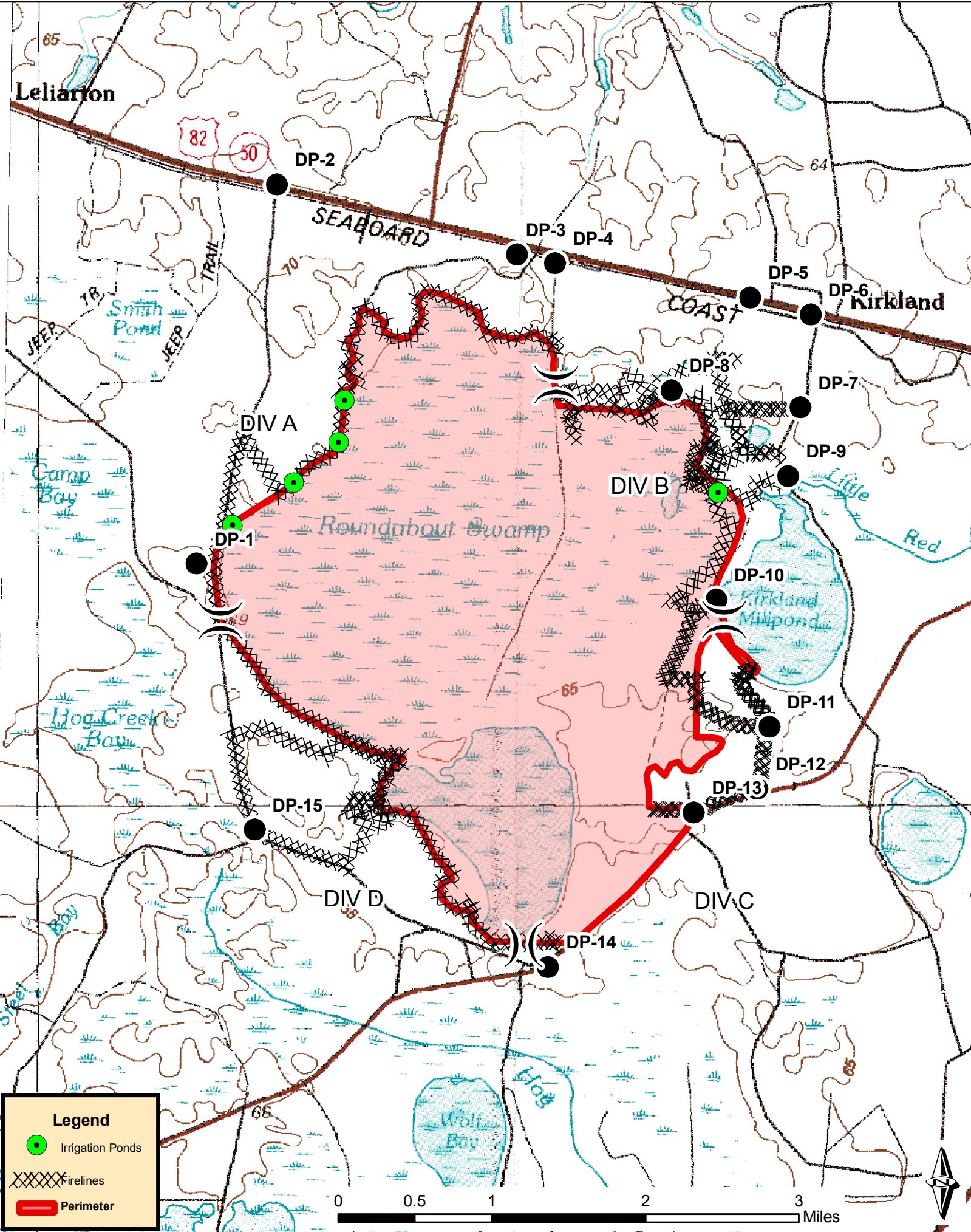
**HEAVY HELICPTERS @ DAVIS HELIBASE & POGO HELIBASE**

FAA N#	TY	MAKE/MODEL	BASE	AVAIL	START	REMARKS	FAA N#	TY	MAKE/MODEL	BASE	AVAIL	START	REMARKS
N5BH	I	Sikorsky S-70A-27	Pogo	0900	0930	Bucket Drops	N5738Y	III	Bell 206	Pogo	0900	0930	Recon/ Admin/ IA
N4503E	I	Sikorsky S-61N	Pogo	0900	0930	Bucket drops	N12HX	III	Bell 407	Pogo	0900	0930	Admin/ Recon
N15HX	II	Bell 205++	Pogo	0900	0930	Bucket drops	Chopper 7/7GF	III	Bell 407	Waycross	0900	0930	State IA-Bucket drops as needed
N17HX II	II	BELL 205++	Pogo	0900	0930	Bucket Drops	90K	I	Baron	Waycross	0900	0930	ATGS
606	I	UH-60 (NG)	Waycross	0900	0930	IA for State & Bucket Drops	62Z	I	King Air	Lake City	0800	0930	ATGS
012	I	CH-46 (NG)	Waycross	0900	0930	IA for State & Bucket Drops	1AF (LA)		Cessna 182	Waycross	0900	0900	Aerial Detection
017	I	UH-60 (NG)	Waycross	0900	0930	IA for State & Bucket Drops	2AF (LA)		Cessna 182	Waycross	0900	0930	Aerial Detection
71K (GA)		Cessna 185	Waycross	0900	0930	Aerial Detection GA	98E (GA)		Cessna 182	Waycross	0900	0930	Aerial Detection
11H (GA)		Cessna 182	Waycross	0900	0930	Aerial Detection GA							

**10. TASK/MISSION/ASSIGNMENT (Type/Function includes: Air Tactical, Retardant, Recon, Personnel Transport, Water Dropping, S&R, etc.)**

TYPE/FUNCTION	NAME OF PERSONNEL OR CARGO (if applicable) OR INSTRUCTIONS FOR TACTICAL AIRCRAFT	MISSION START	FLY FROM	FLY TO
Type II Helicopter	Operation and Logistic Support	0930	Helibase	Fire and Return
Type III Helicopter	Operation and Logistic Support	0930	Helibase	Fire and Return
Type I Helicopter	Operation and Logistic Support	0930	Helibase	Fire and Return
ATGS Platforms	Aerial Supervision of all Aircraft over Incidents	0930	Waycross Airport & Lake City	Fire and Return
State Detection Fixed Wing	Aerial Detection and IA for New Fire Starts	0930	Waycross Airport	Fire and Return

# Roundabout Fire - Atkinson County, GA



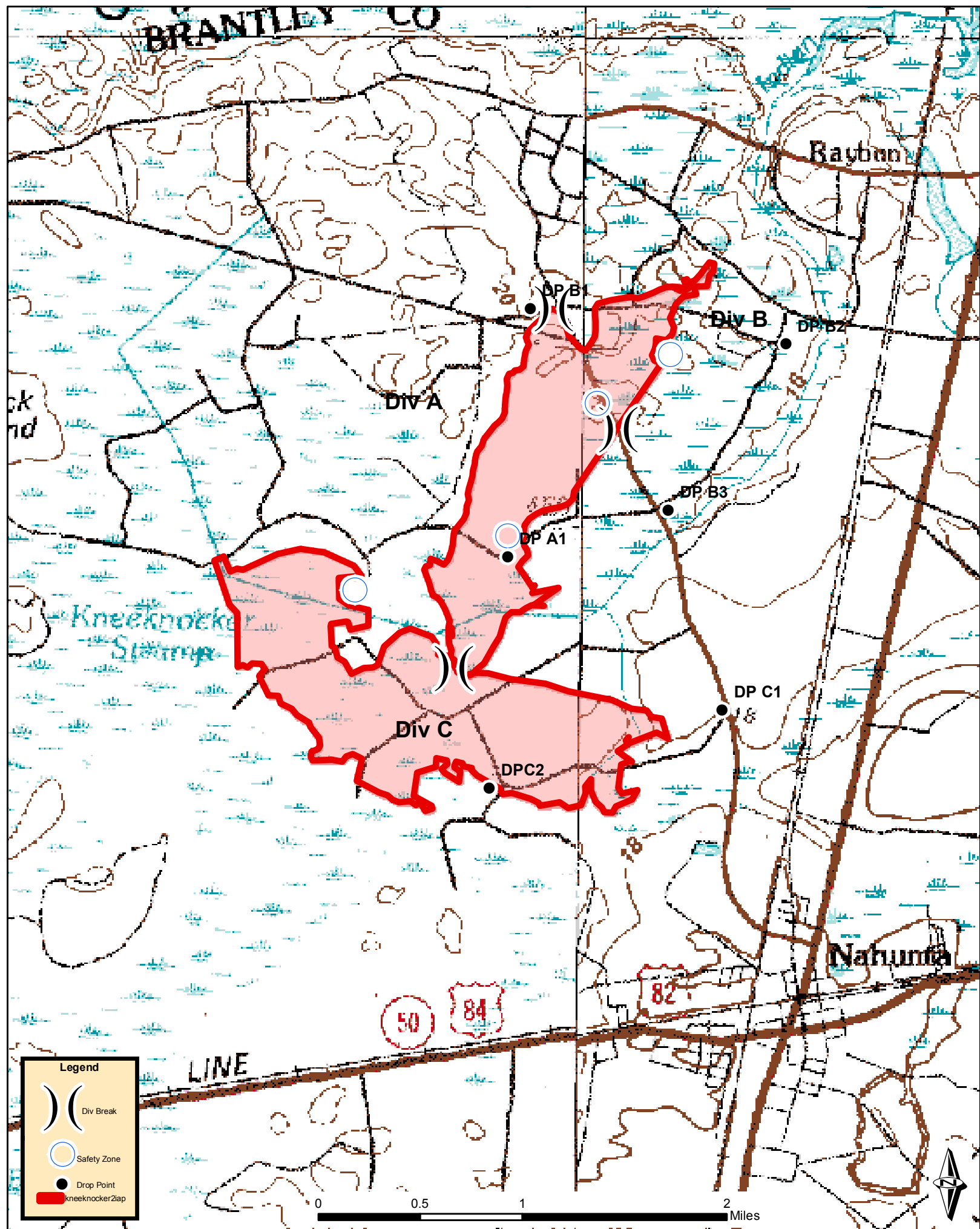
**Legend**

- Irrigation Ponds
- Firelines
- Perimeter

0 0.5 1 2 3 Miles



# KneeKnocker Fire - Brantley County, GA



# STANDARDS OF CONDUCT

## EMERGENCY INCIDENT PERSONNEL

---

Each individual on this incident is responsible for:

- Being *ready and able* to perform their assigned duties effectively, and
- Conducting themselves *appropriately at all times*.

There is ***ZERO tolerance*** for inappropriate behavior while assigned to this incident, including such conduct as:

- Drug possession or use
- Improper/illegal Alcohol use
- Firearms possession/use
- Any unsafe activity
- Discrimination
- Sexual harassment

Each individual is expected to be physically and mentally prepared to perform assigned emergency support duties at all times.

**Anything less than strict adherence to these standards and other posted rules will be dealt with and could result in immediate dismissal from the incident.**

Individuals who are aware of any inappropriate behavior of incident personnel should tell their supervisor, Security or contact the Deputy Incident Commander.

