



Georgia Bay Complex

Sweat Farm Rd. Fire

Bugaboo Scrub II Fire

Incident Action Plan

Monday

May 14, 2007

GA-GAS-0097028



GEMA

INCIDENT OBJECTIVES	1. Incident Name Georgia Bay Complex	2. Date Prepared 5/13/07	3. Time Prepared 1830
	4. Operational Period 05/14/2007 Day and Swing Shift		
5. General Control Objectives For The Incident (Include Alternatives)			
<ol style="list-style-type: none"> 1. Conduct all operations in a safe, cost effective, and efficient maner, and do so in an atmosphere free of discriminatory or harassing remarks or actions. 2. Manage fires within the Georgia Bay Complex as assigned by the Georgia Forestry Commission in a safe and effective manner by providing relief for local resources, identifying and mitigating hazards, establishing LCES, and following 2 to 1 work to rest guidelines. 3. Keep the Sweat Farm Fire south of the town of Waycross and Highway 122, west of Highway 1, north and west of swamp road, and east of the town of Manor. 4. Maintain communications and information flow with resources and Georgia Forestry Commission Protection staff with timely and accurate situational updates. 5. Keep the Bugaboo fire east of State Hwy 177, east of State Hwy 94 from Fargo to Florida state line. 6. Provide Georgia Forestry Commission Protection Staff with timely and accurate situational updates. 7. Provide accurate cost accountability and documentation of expenditures for the duration of the incident. 8. Develop and maintain coordination with local fire departments, local EOC directors, the Georgia Emergency Management Agency, the Southern Area Red Team IMT, Southern Area Blue Team IMT, GOAL, and private industry. 			
6. Weather Forecast For Period			
Partly cloudy and breezy. Areas of smoke over Fargo. Highs 81 to 85, except 78 to 82 near Fargo. Minimum RH's 35 to 40%, except 40-45% near Fargo. East-northeast winds 8 to 12 mph with gusts to 18 mph, becoming east 14 to 18 mph with gusts to 27 mph around midday.			
7. General Safety Message			
Keep all resources informed on strategies, tactics, changes, and identified hazards. Everyone should be informed on existing and expected conditions. Give driving your full attention. Remember to have LCES in place prior to engagement on IA.			
8. ATTACHEMENTS (X IF ATTACHED)			
<input checked="" type="checkbox"/> Organization List - ICS 203	<input checked="" type="checkbox"/> Medical Plan - ICS 206	<input checked="" type="checkbox"/> Tailgate Briefing Form (safety, weather, fire behavior)	
<input checked="" type="checkbox"/> Division Assignment Lists - ICS 204	<input checked="" type="checkbox"/> Incident Map - separate		
<input checked="" type="checkbox"/> Communications Plan - ICS 205	<input type="checkbox"/> Traffic Plan	<input type="checkbox"/>	
9. Prepared By (Planning Section Chief)		10. Approved By (Incident Commander)	
/S/ Les Rogers		/S/ Paul Hannemann	

ORGANIZATION ASSIGNMENT LIST		9.	Operations Section	
1. Incident Name		Chief	Rich Gray	
Georgia Bay Complex		Planning Ops	David Abernathy	
2. Date	3. Time	a.	Sweat Farm Road Branch - Divisions/Groups	
May 13, 2007	2000	Branch Director	Bill Bryant	
4. Operational Period		Division/ICT3	A,B,C,D	William Johnson
May 14, 2007 0700-2000		Division/ICT3	H	Heath Morton
5.	Incident Commander and Staff		Division/ICT3	I,J,K
Incident Commander	Paul Hannemann	Group	ICP Group	B. Drinville
Texas Liason	Shane Crimm	Group	Manor	Travis Watson
Red IMT Liason	Bob Houseman	Group	Day Shift/Stctr	Nate Leising
Safety Officer	Brian Beisel	Group	Swing Shift/Stctr	Bob Habeck
Information Officer	Bielenberg/ Amen/ Thompson/ Stone/ Polant/ Eck/ Withnall	Group	LE/Arson	Mike Heath
6.	Agency Representatives		Group	Prevention
Agency	Name			
GFC District 8	Frank Sorrells			
GFC District 10	Willard Fell			
GFC Protection Dept.	Alan Dozier			
Charlton Co. Liason	Billy Lietch			
GEMA	Alan Robinson	b.	Bugaboo Scrub II Branch - Divisions/Groups	
7.	Planning Section		Branch Director	Bill Woodyard
Chief	Les Rogers	Group	Fargo Group 1	Rusty Smith(T) Shane Crimm
Deputy	Shane Brown	Group	Fargo Group 2	David Zeigler(T) Shane Crimm
Resources Unit	Richard Gibbs/Wes Moorehead(T)	Group	Fargo Group 3	Jim Davis Shane Crimm Jerome Harvey GFC STSP
Situation Unit	D. Ochocki R. Lykins(T) B. Pope(T)			
Documentation Unit	Jamie Powell / Rich Dottellis			
Demobilization Unit	Carl Lundgren			
Computer Tech	Rusty Brown Trey Spivey	c.	Branch III - Divisions/Groups	
Fire Behavior Analyst	Brad Smith / John Roberston	Branch Director		
Incident Meteorologist	John Quagliariello	Division/Group		
Status/Check In	Corley./Keiningham(T) / Whitley(T)	Division/Group		
Field Observer	Morgan/Williams/Hoppe	Division/Group		
GIS	K.Winter C.Bailey B. Robinson	Division/Group		
Infrared Interpreter	Lance Barnum			
Training Specialist	Lewis Kearney			
8.	Logistics Section		d.	Air Operations Branch
Chief	Susan Cornett	Air Operations Branch Director	P.J. Pearson	
Facilities Unit	Jimmy Caldwell	Helibase Manager	Dave Langley/Lon Patterson(T)	
Supply Unit	Larry Bennett	Air Support Supervisor		
Food Unit	Terry Seward	GFC Air Operations	Mike Leverette	
Base Camp Manager	Karraker/Garman/Pierce(T)	Air Tanker Coordinator		
Ground Support Unit	G. Gillespie M. Summers	10.	Finance Section	
Ordering Manager	R. Siemens K Rhoden	Chief	Jill Lipsey V. Coleman (T)	
Security Manager	Roger Atkinson	Incident Business Advisor	Lila Johnson	
Medical Unit	Susan Long	Time Unit Leader	Jean Frick	
Communications Unit	Carl Bridges	Buying Team	Barbara Hatch	
Initial Attack Dispatcher	Susie Burford	Personnel Time Recorder	Karen Stripling Sharron Sellers	
Hotel Manager	John Wall	Equipment Time Recorder	Jane Bryant Stephanie Elledge(T) Amy Treadwell (T)	
Equipment Manager	M. Sanchez	Procurement	Penny Brown	
Mechanic	English/Skinner/Crane/McNeal	Cost Unit	Carolyn Riggs	
Technical Specialist	Bobby Weaver	Comp/Claims	Miguel Martinez/Kathy Oliveras	
Receiving & Distribution Manager	Daniel Wilson	Prepared by (Resource Unit Leader) Richard Gibbs /Wes Moorehead		
Camp Crew	TN JC #3/Barber			

DIVISION ASSIGNMENT LIST				1. Branch Sweat Farm Fire		2. Division/Group A-B-C-D	
3. Incident Name Georgia Bay Complex				4. Operational Period Date: 5-14-07 Time: 0700 - 2000			
5. Operations Personnel							
Operations Chief		David Abernathy O-738 5-19 Rich Gray O-77 5-15		Division/ICT3		William Johnson O-724 5/20	
Branch Director		Bill Bryant O-102 5/16		Safety Officer		Phil Spor O-59 5/20	
6. Resources Assigned this Period							
Strike Team/Task Force/ Resource Designator	Leader / Name	Last Shift Date	Number Persons	Trans. Needed	Drop Off PT./Time	Pick Up PT./Time	
TNS ST Eng T6 O-679	Bond	5/17	9	N	0700	2000	
TN Eng S5UW93	E-1359 Roser/McFarland	5/17			0700	2000	
TN Eng 5649	E-1372 Escue/Pigg	5/17			0700	2000	
TN Eng S5YD39	E-1360 Howell/Baker	5/17			0700	2000	
TN Eng	E-232 ?? Jeffers/Gaw	5/17			0700	2000	
GFC ST Tractor Plow T3	Mosley	5/24	4	N	0700	2000	
GFC JD 650	Taylor	5/24			0700	2000	
GFC JD 650	E-2604 Harden	5/24			0700	2000	
GFC JD 650	E-2605 Calhoun	5/24			0700	2000	
GFC Coffee Co. TP D4H E-1502	Holburton	5/20	1	N	0700	2000	
7. Control Operations Patrol, mop up and mitigate as well respond to any threats posed by the fire.							
8. Special Instructions Watch out for Snags Remain in communications. Be alert for traffic on Highways Stay Hydrated. Ensure all personnel wear PPE. Take spot RX forecasts hourly. Keep tractors loaded and ready to move if not being used on the line Have constant communication with logging operation in fire area: Buck Rodenberry: 912-2764990 Linc 18*5865 LCES implemented by 1000 and notify OPS when completed.							
9. Division/Group Communication Summary							
Function	Frequency	System	Channel	Function	Frequency	System	Channel
Command		King NIFC		Logistics		King NIFC	
Tactical Div./Group	DIV A,B,C,D	King NIFC	Talk Group 1 Ch. 11	Air to Ground	Talk Group 1	King NIFC	Ch. 13
Prepared by (Resource Unit Leader) Richard Gibbs/Wes Moorehead		Approved by (Planning Section Chief) <i>/s/Les Rogers</i>		Date May 13, 2007		Time 1900	

DIVISION ASSIGNMENT LIST			1. Branch Sweat Farm Fire		2. Division/Group H			
3. Incident Name Georgia Bay Complex			4. Operational Period Date: 5-14-07 Time: 0700 - 2000					
5. Operations Personnel								
Operations Chief		David Abernathy O-738 5-19 Rich Gray O-77 5-15		Division/ICT3		Heath Morton O-941 5/23		
Branch Director		Bill Bryant O-102 5/16		Safety Officer		Glenn Bailey O948-5/17		
6. Resources Assigned this Period								
Strike Team/Task Force/ Resource Designator		Leader / Name		Last Shift Date	Number Persons	Trans. Needed	Drop Off PT./Time	Pick Up PT./Time
GFC ST Engines T6		Mike Purcell		5/26	11	N	0700	2000
Pickens 86	E-1117	Davis/Keene		5/26		N	0700	2000
Paulding 86	E-1098	Cornett/Henderson		5/26		N	0700	2000
Heard 86	E-1015	Price/Singleton		5/26		N	0700	2000
Upton 86	E-1132	Sanders/Shifflett		5/26		N	0700	2000
Murray 86	E-1022	Jones/Burnett		5/20		N	0700	2000
SC TF E-1130 w/ T6 ENG O-670		Walley		5/16	7	N	0700	2000
JD 700 SB	E-9006	Grooms/Godowns		5/16		N	0700	2000
SCS ENG T6	E?	Rutherford O-669 Valentine		5/16		N	0700	2000
SCS ENG T6	E?	Green/McGill		5/16		N	0700	2000
GFC ST Tractor Plow T3 O-855		Glenn		5/23	4	N	0700	2000
GAS Jefferson 73 T3	E-1000	Mercier		5/23		N	0700	2000
GAS Burke 70 T4	E-1001	Pearson		5/23		N	0700	2000
GFC Burke 72 T4	E-1002	Glenn		5/23		N	0700	2000
Lowndes Co. WT E-2678		Hughes/Lindburg		5/26	2	N	0700	2000
7. Control Operations Patrol, mop up and mitigate as well as respond to any threats posed by the fire.								
8. Special Instructions Remain in communications. Be alert for traffic on Highways Stay Hydrated. Ensure all personnel wear PPE. Take spot RX forecasts every hour. LCES implemented by 1000 and notify OPS when completed.								
9. Division/Group Communication Summary								
Function		System	Channel	Function	Frequency	System	Channel	
Command		King NIFC		Logistics		King NIFC		
Tactical Div/Group	DIV - H	King NIFC	Talk Group 1 Ch.9	Air to Ground	Talk Group 1	King NIFC	Ch. 13	
Prepared by (Resource Unit Leader) Richard Gibbs/Wes Moorehead		Approved by (Planning Sect. Ch.) /s/Les Rogers			Date May 13, 2007		Time 1900	

DIVISION ASSIGNMENT LIST			1. Branch Sweat Farm Fire		2. Division/Group I-J-K			
3. Incident Name Georgia Bay Complex			4. Operational Period Date: 5-14-07 Time: 0700 - 2000					
5. Operations Personnel								
Operations Chief		David Abernathy O-738 5-19 Rich Gray O-77 5-15		Division/ICT3		Mike Benefield O-98 5/18		
Branch Director		Bill Bryant O-122 5/16		Safety Officer		Glenn Bailey (IJ) O-948 5/17 Phil Spor (K) O-59 5/20		
6. Resources Assigned this Period								
Strike Team/Task Force/ Resource Designator		Leader / Name		Last Shift Date	Number Persons	Trans. Needed	Drop Off PT./Time	Pick Up PT./Time
LAS ST Engines T6 O-656		Smith		5/18	9	N	0700	2000
LAS Engine		E-1070 Watson/Eddleman		5/20		N	0700	2000
LAS Engine		E-1071 Blackwell/Redmond		5/20		N	0700	2000
LAS Engine		E-1074 Graham/Sandell		5/20		N	0700	2000
LAS Engine		E-1075 Harris/Poole		5/20		N	0700	2000
LAS ST Engines T6 O-655		Lane		5/20	7	N	0700	2000
LAS Engine		E-1073 Smith/Cannon		5/20		N	0700	2000
LAS Engine		E-1072 Tilley/Knowles		5/20		N	0700	2000
LAS Engine		E-1076 Turner/Colburn		5/20		N	0700	2000
ALS STPL O-84		Lindley		5/18	9	N	0700	2000
ALS Doz T2		E1398 Coburn/McCain		5/18		N	0700	2000
ALS Tractor Plow T3		E-1399 King/Nolan		5/18		N	0700	2000
OK Tractr Plw T2 O-DAFFY		E-1468 Lovitt/Cook		5/16		N	0700	2000
OK Tractr Plw T2 O-DAFFY		E-1469 Medders/Reynolds		5/16		N	0700	2000
Laurens Co. WT E-1228		Underwood/Edwards		5/16	2	N	0700	2000
<i>Logging Crew #1</i>		<i>Harry Maine</i>		<i>Working @ Eight Mile Post Rd & Tom Thumb Rd.</i>				
<i>Logging Crew #2</i>		<i>John Hadley</i>		<i>Working @ Eight Mile Post Rd & Friedell Rd.</i>				
<i>Logging Crew #3</i>		<i>Sheppard Brothers</i>		<i>Working @ Eight Mile Post Rd & Wynn Rd.</i>				
<i>Logging Crew #4</i>		<i>Padgett/Peanut</i>		<i>Working @ Clay Cup Rd and Tom Thumb Rd. 18*11220</i>				
7. Control Operations Patrol, mop up and mitigate as well as respond to any threats posed by the fire.								
8. Special Instructions Contact for I/A dispatches is County Ranger Billy Leitch 912-218-9325 Linc 18*12022 Drive defensively- watch for city traffic Be alert for traffic on Highways Ensure all personnel wear PPE. Stay Hydrated. LCES implemented by 1000 and notify OPS when completed. Take spot RX forecasts every hour. Remain in communications with resources and contractor. Contractor's link #: 18*14052								
9. Division/Group Communication Summary								
Function	Frequency	System	Channel	Function	Frequency	System	Channel	
Command		King NIFC		Logistics		King NIFC		
Tactical Div/Group	DIV I, J, K	King NIFC	Talk Group 1 Ch. 10	Air to Ground	Talk Group 1	King NIFC	13	
Prepared by (Resource Unit Leader) Gibbs/ Moorehead (T)		Approved by (Planning Section Chief) /s/Les Rogers			Date 5/13/07		Time 1900	

DIVISION ASSIGNMENT LIST			1. Branch Sweat Farm Fire		2. Division/Group ICP GROUP		
3. Incident Name Georgia Bay Complex			4. Operational Period Date: 5-14-07 Time: 0700 - 2000				
5. Operations Personnel							
Operations Chief		David Abernathy O-738 5-19 Rich Gray O-77 5-15		Division/ICT3		Brian Drinville O-99 5/17	
Branch Director				Safety Officer		Tim Sampson O-180 5/26	
6. Resources Assigned this Period							
Strike Team/Task Force/ Resource Designator		Leader / Name	Last Shift Date	Number Persons	Trans. Needed	Drop Off PT./Time	Pick Up PT./Time
GFC T3 ST Tractor Plow E-1465		Kirksey	5/16	4	N	Folkston 0700	ICP 2000
Worth 70		E-1465.2	Brown	5/16	N	Folkston 0700	ICP 2000
Worth 71		E-1465.1	Reynolds	5/16	N	Folkston 0700	ICP 2000
Decatur		E-1028.3	Barwiess	5/24	N	Folkston 0700	ICP 2000
NC DOZB		E-1105	Griffin	5/16	N	Folkston 0700	ICP 2000
NC Dozer T3		E-1106	Mathews	5/16	N	Folkston 0700	ICP 2000
7. Control Operations Position Equipment to Manage and Mitigate any Threats Posed by Uncontrolled Fires.							
8. Special Instructions Contact for I/A dispatches is County Ranger Billy Leitch 912-218-9325 Linc 18*12022 Drive defensively- watch for city traffic Be alert for traffic on Highways Ensure all personnel wear PPE. Stay Hydrated. LCES implemented by 1000 and notify OPS when completed. Take spot RX forecasts every hour. Remain in communications with resources and contractor. Contractor's link #: 18*14052							
9. Division/Group Communication Summary							
Function	Frequency	System	Channel	Function	Frequency	System	Channel
Command		King NIFC		Logistics		King NIFC	
Tactical Div/Group	ICP Group	King NIFC	Talk Group 1 Ch. 11	Air to Ground	Talk Group 1	King NIFC	Ch. 13
Prepared by (Resource Unit Leader) Gibbs/ Moorehead (T)		Approved by (Planning Section Chief) /s/Les Rogers			Date 5/13/07		Time 1900

DIVISION ASSIGNMENT LIST				1. Branch Sweat Farm Fire		2. Division/Group MANOR GROUP	
3. Incident Name Georgia Bay Complex				4. Operational Period Date: 5-14-07 Time: 0700 - 2000			
5. Operations Personnel							
Operations Chief		David Abernathy O-738 5-19 Rich Gray O-77 5-15		Division/ICT3		Jeff Davis O-100 5/17	
Branch Director		Bill Bryant O-102 5/16		Safety Officer		Steven Snider O-186 5/26	
6. Resources Assigned this Period							
Strike Team/Task Force/ Resource Designator		Leader / Name	Last Shift Date	Number Persons	Trans. Needed	Drop Off PT./Time	Pick Up PT./Time
GFC ST Tractor Plow T3 O-615					N	Manor 0700	Manor 2000
Evans 70 E-1199					N	Manor 0700	Manor 2000
Jenkins 70 E-1198					N	Manor 0700	Manor 2000
Bulloch 70 E-1200					N	Manor 0700	Manor 2000
TFLD O-155		Suazo	5/24			Manor 0700	Manor 2000
GFC ST Tractor Plow T2 E-1343					N	Manor 0700	Manor 2000
GFC T2 Liberty 61/71 E-1344					N	Manor 0700	Manor 2000
GFC T2 Long 61/71 E-1345					N	Manor 0700	Manor 2000
GFC Bryon 61/71 E-1346					N	Manor 0700	Manor 2000
STEN (T) / TFLD (T) O-183		Day	5/26	9	N	Manor 0700	Manor 2000
VAF Engine T6 E-57		Collett	5/21		N	Manor 0700	Manor 2000
NMF Engine T6 E-56		Trujillo	5/22		N	Manor 0700	Manor 2000
NMF Eng #236 T6 E-60		Alirez	5/22		N	Manor 0700	Manor 2000
7. Control Operations Position Equipment to Manage and Mitigate any Threats Posed by Uncontrolled Fires.							
8. Special Instructions Drive defensively- watch for city traffic Remain in communications with resources and contractor. Contractor's link #: 18*14052 Be alert for traffic on Highways Stay Hydrated. Ensure all personnel wear PPE. Take spot RX forecasts every hour. LCES implemented by 1000 and notify OPS when completed.							
9. Division/Group Communication Summary							
Function	Frequency	System	Channel	Function	Frequency	System	Channel
Command		King NIFC		Logistics		King NIFC	
Tactical Div/Group	Manor Group	King NIFC	Talk Group 1 Ch. 9	Air to Ground	Talk Group 1	King NIFC	Ch. 13
Prepared by (Resource Unit Leader) Richard Gibbs /Wes Moorehead		Approved by (Planning Section Chief) /s/ <i>Les Rogers</i>		Date May 13, 2007		Time 1900	

DIVISION ASSIGNMENT LIST				1. Branch Bugaboo Scrub II		2. Division/Group Fargo Group 1	
3. Incident Name Georgia Bay Complex				4. Operational Period Date: 5-14-07 Time: 0700 - 2000			
5. Operations Personnel							
Operations Chief		David Abernathy O-738 5-19 Rich Gray O-77 5-15		Division/ICT3		David Ziegler O-742 5/19 Shane Crimm STSP O-737 5/19	
Branch Director		Bill Woodyard O-136 5/21		Safety Officer		Steve Sneider O-66 5/27 Larry Holsomback Red Team	
6. Resources Assigned this Period							
Strike Team/Task Force/ Resource Designator		Leader / Name		Last Shift Date	Number Persons	Trans. Needed	Pick Up PT./Time
ST Eng T3 STEN O-149		Mike Leach		5/24	13	N	2000
AZS Eng T6 E-58		Walters/Reitz/ Westerman		5/24		N	2000
Rye 66 T3 E-23		Thompson/		5/24		N	2000
CO Platte Canyon T3 E-65		Brugett/Tighe/Popovich		5/24		N	2000
COS #312 T6 E-67		Roetker/Lack/Groome		5/24		N	2000
TFLD O-153		Dave Larson		5/24	1	N	2000
GFC ST Engines T6						N	2000
Mitchell E-1019		Sheffield/Redding		5/25		N	2000
Early E-1016						N	2000
Johnson E-1021						N	2000
PVT Smokey Mt II E-42		Scroggs/Little		5/18		N	2000
PVT Smokey Mt III E-43		Bartlett/Benton		5/17		N	2000
GAS ST Tractor Plow T3 O-3001		Tony Harkins 18*10639		5/18	7	N	2000
GAS Coweta 70 E-2048		Chad Dorminey		5/19		N	2000
GAS Coweta 72 E-2047		Jeff Monsaur		5/19		N	2000
GAS Walton 62/72 T5 E-1047		Payton Turner		5/18		N	2000
7. Control Operations Structure defense preparation along with positioning equipment to manage and mitigate any threats posed by uncontrolled fires.							
8. Special Instructions Remain in communications. Be alert for traffic on Highways Stay Hydrated. Ensure all personnel wear PPE. Take spot RX forecasts every hour. LCES implemented by 1000 and notify OPS when completed							
9. Division/Group Communication Summary							
Function	Frequency	System	Channel	Function	Frequency	System	Channel
Command		King NIFC		Logistics		King NIFC	
Tactical Div/Group	Fargo Group 1	King NIFC	Talk Group 2 Ch. 11	Air to Ground	Talk Group 1	King NIFC	Ch. 13
Prepared by (Resource Unit Leader) Richard Gibbs/ Wes Moorehead		Approved by (Planning Section Chief) <i>/s/Les Rogers</i>			Date May 13, 2007		Time 1900

DIVISION ASSIGNMENT LIST			1. Branch Bugaboo Scrub II		2. Division/Group Fargo Group 2 Page 1 of 2		
3. Incident Name Georgia Bay Complex			4. Operational Period Date: 5-14-07 Time: 0700 - 2000				
5. Operations Personnel							
Operations Chief		David Abernathy O-738 5-19 Rich Gray O-77 5-15		Division/ICT3		Rusty Smith O-743 5/19 Shane Crimm STSP O-737 5/19	
Branch Director		Bill Woodyard O-136 5/21		Safety Officer		Steve Sneider O-186 5/27 Larry Holsomback Red Team	
6. Resources Assigned this Period							
Strike Team/Task Force/ Resource Designator		Leader / Name	Last Shift Date	Number Persons	Trans. Needed	Drop Off PT./Time	Pick Up PT./Time
TFLD O-156		Matt Young	5/24	1	N	Superior Pine 0700	2000
DOZB O-147		R. Briggs	5/23	3	N	Superior Pine 0700	2000
ARK T2 DOZ E-28		Vines	5/16		N	Superior Pine 0700	2000
Timberline D6 Doz T2 E-1084					N	Superior Pine 0700	2000
DOZB O-146		Seekins	5/22	3	N	Superior Pine 0700	2000
PVT T1 DOZ E-30		Abernathy	5/16		N	Superior Pine 0700	2000
PVT T2 DOZ E-29		Abernathy	5/16		N	Superior Pine 0700	2000
GFC ST Tractor Plow T3 O-874		Brannon	5/23	4	N	Superior Pine 0700	2000
Jenkins 72 E-1218		Gay	5/23		N	Superior Pine 0700	2000
Tattnal 72 E-1216		Terrell	5/23		N	Superior Pine 0700	2000
Emanuel 60/70 E-1217		Claxton	5/23		N	Superior Pine 0700	2000
7. Control Operations Hold and improve fire break and coordinate suppression with adjacent resources							
8. Special Instructions Remain in communications. Be alert for traffic on Highways. Stay Hydrated. Take spot RX forecasts every hour. Ensure all personnel wear PPE. LCES implemented by 1000 and notify OPS when completed.							
9. Division/Group Communication Summary							
Function	Frequency	System	Channel	Function	Frequency	System	Channel
Command		King NIFC		Logistics		King NIFC	
Tactical Div/Group	Fargo Group 2	King NIFC	Talk Group 2 Ch. 5	Air to Ground	Talk Group 1	King NIFC	Ch. 13
Prepared by (Resource Unit Leader) Richard Gibb /Wes Moorehead		Approved by (Planning Section Chief) <i>/s/Les Rogers</i>			Date May 13, 2007		Time 1900

DIVISION ASSIGNMENT LIST			1. Branch Bugaboo Scrub II		2. Division/Group Fargo Group 2 Page 2 of 2		
3. Incident Name Georgia Bay Complex			4. Operational Period Date: 5-14-07 Time: 0700 - 2000				
5. Operations Personnel							
Operations Chief		David Abernathy O-738 5-19 Rich Gray O-77 5-15		Division/ICT3		Rusty Smith O-743 5/19 Shane Crimm STSP O-737 5/19	
Branch Director		Bill Woodyard O-136 5/21		Safety Officer		Steve Sneider O-186 5/27 Larry Holsomback Red Team	
6. Resources Assigned this Period							
Strike Team/Task Force/ Resource Designator		Leader / Name	Last Shift Date	Number Persons	Trans. Needed	Drop Off PT./Time	Pick Up PT./Time
TFLD O-157		Chris Bartlett	5/24	1	N	Superior Pine 0700	2000
LA ST Tractor Plow T2 O-661		Smith	5/18	11	N	Superior Pine 0700	2000
LAS 81 Doz T2 E-1102		Stokes/Swett	5/18		N	Superior Pine 0700	2000
LAS 82 Doz T2 E-1103		Switzer/Purvis	5/18		N	Superior Pine 0700	2000
TXS Tractor Plow T2 E-1452		Ramsey/Kuhnert	5/22		N	Superior Pine 0700	2000
TXS Tractor Plow T2 E-1453		Kiser/ McCallie	5/15		N	Superior Pine 0700	2000
TXS Tractor Plow T2 E-1376		Elrod/Wiley	5/25		N	Superior Pine 0700	2000
TFLD O-152		David Hamilton	5/24	1	N	Superior Pine 0700	2000
ALS Doz T2 E-1110		Williams/Lyons	5/16	2	N	Superior Pine 0700	2000
ALS Doz T2 E-1109		Mathews/Kornegay	5/16	2	N	Superior Pine 0700	2000
TFLD O-744		McNeil (T)	5/19	4	N	Superior Pine 0700	2000
Lee Ind. T1 Doz Komatsu E1085		Harold Hawg			N	Superior Pine 0700	2000
Lee Ind. T1 Doz Komatsu E1193		Sermans Hawg			N	Superior Pine 0700	2000
7. Control Operations Hold and improve fire break and coordinate suppression with adjacent resources							
8. Special Instructions Remain in communications. Be alert for traffic on Highways. Stay Hydrated. Take spot RX forecasts every hour. Ensure all personnel wear PPE. LCES implemented by 1000 and notify OPS when completed.							
9. Division/Group Communication Summary							
Function	Frequency	System	Channel	Function	Frequency	System	Channel
Command		King NIFC		Logistics		King NIFC	
Tactical Div/Group	Fargo Group 2	King NIFC	Talk Group 2 Ch. 5	Air to Ground	Talk Group 1	King NIFC	Ch. 13
Prepared by (Resource Unit Leader) Richard Gibb /Wes Moorehead		Approved by (Planning Section Chief) /s/Les Rogers			Date May 13, 2007		Time 1900

DIVISION ASSIGNMENT LIST				1. Branch Bugaboo Scrub II		2. Division/Group Fargo Group 3	
3. Incident Name Georgia Bay Complex				4. Operational Period Date: 5-14-07 Time: 0700 - 2000			
5. Operations Personnel							
Operations Chief		David Abernathy O-738 5-19 Rich Gray O-77 5-15		Division/ICT3		Jim Davis O-604 5/16 Shane Crimm STSP O-737 5/19 Jerome Harvey GFC STSP	
Branch Director		Bill Woodyard O-136 5/21		Safety Officer		Steve Sneider O-186 5/27 Larry Holsomback Red Team	
6. Resources Assigned this Period							
Strike Team/Task Force/ Resource Designator		Leader / Name		Last Shift Date	Number Persons	Trans. Needed	Drop Off PT./Time Pick Up PT./Time
TFLD O-154 O-158		Blain Tarbell Poowegup(T)		5/25	2	N	Superior Pine 0700 2000
STEN O-132		Van Kamen		5/25	13	N	Superior Pine 0700 2000
CA/INF #32 T3 E-75		Richard Napoles		5/26		N	Superior Pine 0700 2000
LNF T3 E-64		Reynolds		5/25		N	Superior Pine 0700 2000
GFC T3 E-2656		Flood/Laughlin				N	Superior Pine 0700 2000
DNR ST T6 Engines O-150		Ron Baar		5/24	4	N	Superior Pine 0700 2000
Support Fire T6 E-12		Zuehlke		5/24		N	Superior Pine 0700 2000
DNR Engine T6 E-1202		Floyed/Morris		5/17		N	Superior Pine 0700 2000
STPL O-148		Andy Barnett		5/24	3	N	Superior Pine 0700 2000
Ft. Stewart TP T2 E-2509		Crowley		5/18		N	Superior Pine 0700 2000
Ft. Stewart TP T2 E-2508		Bryant		5/18		N	Superior Pine 0700 2000
STEN O-179		Gilbert		5/26	18	N	Superior Pine 0700 2000
Dublin Eng. T1 GEMA						N	Superior Pine 0700 2000
Roadsvile T1 GEMA						N	Superior Pine 0700 2000
Bryan Eng T1 GEMA						N	Superior Pine 0700 2000
Axton WT GEMA						N	Superior Pine 0700 2000
Agency Rep		Chief Drew				N	Superior Pine 0700 2000
Command Unit Leader		Ricky Marshall				N	Superior Pine 0700 2000
Albany T1 GEMA						N	Superior Pine 0700 2000
Albany T6 GEMA						N	Superior Pine 0700 2000
7. Control Operations							
Structure defense preparation along with positioning equipment to manage and mitigate any threats posed by uncontrolled fires.							
8. Special Instructions							
Remain in communications				Stay Hydrated.			
Ensure all personnel wear PPE.				Be alert for traffic on Highways			
Take spot RX forecasts every hour.				LCES implemented by 1000 and notify OPS when completed.			
9. Division/Group Communication Summary							
Function	Frequency	System	Channel	Function	Frequency	System	Channel
Command		King NIFC		Logistics		King NIFC	
Tactical Div/Group	Fargo Group 3	King NIFC	Talk Group 2 Ch. 8	Air to Ground	Talk Group 1	King NIFC	Ch. 13
Prepared by (Resource Unit Leader)		Approved by (Planning Section Chief)		Date		Time	
Richard Gibbs /Wes Moorehead		/s/Les Rogers		May 13, 2007		1900	

DIVISION ASSIGNMENT LIST				1. Branch Sweat Farm Fire		2. Division/Group Day Shift/Structure Protection		
3. Incident Name Georgia Bay Complex				4. Operational Period Date: 5-14-07 Time: 0700 - 2000				
5. Operations Personnel								
Operations Chief		David Abernathy O-738 5-19 Rich Gray O-77 5-15		Division/ICT3		Nate Leising O-97 5/20		
Branch Director		Bill Bryant 5/16		Safety Officer				
6. Resources Assigned this Period								
Strike Team/Task Force/ Resource Designator		Leader / Name		Last Shift Date	Number Persons	Trans. Needed	Drop Off PT./Time	Pick Up PT./Time
GA DOC TF		Rick Huggins 11*3204 cell 770-330-7246			69	N	Refuge HQ 0700	Diversion Center 2000
5 Type 1 Eng.		Don Shugart 54*240					Refuge HQ 0700	Diversion Center 2000
GA DOC Eng 4553		Larry Brown 11*32063					Refuge HQ 0700	Diversion Center 2000
GA DOC Eng 1621							Refuge HQ 0700	Diversion Center 2000
GA DOC Eng 2704 pump & roll							Refuge HQ 0700	Diversion Center 2000
GA DOC Eng 2841 pump & roll							Refuge HQ 0700	Diversion Center 2000
GA DOC Eng 3253 pump & roll							Refuge HQ 0700	Diversion Center 2000
3 Type 2 Tenders							Refuge HQ 0700	Diversion Center 2000
GA DOC WT 48017							Refuge HQ 0700	Diversion Center 2000
GA DOC WT 3245							Refuge HQ 0700	Diversion Center 2000
GA DOC Wilcox Co. WT							Refuge HQ 0700	Diversion Center 2000
2 Type 6 Eng.							Refuge HQ 0700	Diversion Center 2000
GA DOC Brush Truck 16							Refuge HQ 0700	Diversion Center 2000
GA DOC Brush Truck 4984							Refuge HQ 0700	Diversion Center 2000
7. Control Operations Provide population/structure/infrastructure protection and preparation where needed. Continue to Gather GIS Data. Provide Mop Up around structures and support Division Mop Up. Coordinate with Red Team where applicable. Provide Firewise and Fire Prevention information to the public. Coordinate with DIVS.								
8. Special Instructions Remain in communications. Stay Hydrated. Be alert for traffic on Highways. Ensure all personnel wear PPE. Tactical Commo is on GA Mutual Aid 154.280 **County Ambulances Staged at Race Pond Staging Area LCES implemented by 1000 and notify OPS when completed. Folkston Staging>912-496-3030 GEMA 40 Southern Linc 18*11049 Red Team Structures Contact Info. Bill Bell 18*12537 5/13 (will extend) Dennis Hackett 404-354-4415 or 352-279-6977 5/16 Jessie Jordan Ware Co. FD 44*4042 912-281-6541 Ware County Fuel Tender -- Tony Leverett 912-288-3295								
9. Division/Group Communication Summary								
Function	Frequency	System	Channel	Function	Frequency	System	Channel	
Command		King NIFC		Logistics		King NIFC		
Tactical Div/Group	DIV - Day Structure	King NIFC	Talk Group1 Ch. 3	Air to Ground	Talk Group 1	King NIFC	Ch. 13	
Prepared by (Resource Unit Leader) Gibbs/Moorehead (T)		Approved by (Planning Section Chief) /s/Les Rogers		Date 5/13/07		Time 1900		

DIVISION ASSIGNMENT LIST			1. Branch Sweat Farm Fire		2. Division/Group Swing Shift / Structures Group		
3. Incident Name Georgia Bay Complex			4. Operational Period Date: 5-14-07 Time: 1200 - 2400				
5. Operations Personnel							
Operations Chief		David Abernathy O-738 5-19 Rich Gray O-77 5-15		Division/ICT3		Bob Habeck O-101 5/19	
Branch Director		Bill Woodyard / Bill Bryant		Safety Officer		John Orton O-68 6/1	
6. Resources Assigned this Period							
Strike Team/Task Force/ Resource Designator		Leader / Name	Last Shift Date	Number Persons	Trans. Needed	Drop Off PT./Time	Pick Up PT./Time
GFC ST Tractor Plow T3				7	N	Fargo 1200	Fargo 2400
Toombs 72 E-1323					N	Fargo 1200	Fargo 2400
Pulaski 71 E-1322					N	Fargo 1200	Fargo 2400
Ben Hill 71 E-1100					N	Fargo 1200	Fargo 2400
GEMA Grady WT E-2601		Mikah Freeman	5/22	1	N	Fargo 1200	Fargo 2400
STEN		Weaver	5/20	7	N	Fargo 1200	Fargo 2400
TX PVT Engine E-44		Simms/Judd	5/20		N	Fargo 1200	Fargo 2400
TX PVT #701 Engine E-45		McInis	5/20		N	Fargo 1200	Fargo 2400
TXF #31 Engine E-46		Beakley/Salcido Calahan	5/20		N	Fargo 1200	Fargo 2400
TXF FS Engine T6(PVT) E-47		Woodward/Pannell	5/22	2	N	Fargo 1200	Fargo 2400
STEN T6 Engine O-682		Stinson	5/21	1	N	Swamp Rd 1200	Swamp Rd 2400
TX Eng 4460 E-1181		Sinderud	5/21	1	N	Swamp Rd 1200	Swamp Rd 2400
MN PVT #6 Engine E-26		Bahnemamn Mazwrkiewicz	5/14	2	N	Swamp Rd 1200	Swamp Rd 2400
7. Control Operations Patrol and Mop Up West of Swamp Rd. Provide Structure Protection as needed. Coordinate with DIVS							
8. Special Instructions Remain in communications. Be alert for traffic on Highways Stay Hydrated. Ensure all personnel wear PPE. Take spot forecasts every hour. Implement LCES by 1000 Stinson strike team will patrol and mop up west of Swamp Rd. Remainder of resources assigned to Fargo will assist with structure protection and related activities							
9. Division/Group Communication Summary							
Function	Frequency	System	Channel	Function	Frequency	System	Channel
Command		King NIFC		Logistics		King NIFC	
Tactical Div/Group	DIV - Swing Shift	King NIFC	Talk Group 2 Ch. 7	Air to Ground	Talk Group 1	King NIFC	
Prepared by (Resource Unit Leader) Richard Gibbs /Wes Moorehead		Approved by (Planning Section Chief) <i>/s/Les Rogers</i>			Date May 13, 2007		Time 1900

DIVISION ASSIGNMENT LIST			1. Branch Sweat Farm Fire		2. Division/Group Law Enforcement / Arson Group				
3. Incident Name Georgia Bay Complex			4. Operational Period Date: 5-14-07 Time: 0700 - 2000						
5. Operations Personnel									
Operations Chief					Division/ICT3				
Branch Director					Safety Officer				
6. Resources Assigned this Period									
Strike Team/Task Force/ Resource Designator		Leader / Name		Last Shift Date	Number Persons	Trans. Needed	Drop Off PT./Time	Pick Up PT./Time	
Arson Task Force		Mike Heath				N	0700	2000	
G.B.I		Tom Crawford				N	0700	2000	
G.B.I		Richard Dial				N	0700	2000	
G.B.I		Tammy Starkey				N	0700	2000	
Ware Co. S.O.		Joe Morris				N	0700	2000	
GA. Fire Marshal		Brian Clavier				N	0700	2000	
GA. Fire Marshal		Ty Moorman				N	0700	2000	
GFC		Stephen Wilson				N	0700	2000	
SCFC		Barry Farrell				N	0700	2000	
SCFC		Kip Terry				N	0700	2000	
AFC		Steve Lamkin				N	0700	2000	
MSFC		Chad Bassett				N	0700	2000	
TN-ACU		Marianne Cheaves				N	0700	2000	
TN-ACU		Mike Murray				N	0700	2000	
WV DOF		Don Kelley				N	0700	2000	
WV DOF		John Bird				N	0700	2000	
V DOF		David Edwards				N	0700	2000	
V DOF		Ken Mohler				N	0700	2000	
V DOF		William Neff				N	0700	2000	
V DOF		Cody Daniels				N	0700	2000	
7. Control Operations									
8. Special Instructions Remain in communications. Be alert for traffic on Highways Stay Hydrated. Notify Division of spot fires or reburns									
9. Division/Group Communication Summary									
Function	Frequency	System	Channel	Function	Frequency	System	Channel		
Command		King NIFC		Logistics		King NIFC			
Tactical Div/Group		King NIFC		Air to Ground		King NIFC			
Prepared by (Resource Unit Leader) Richard Gibbs/ Wes Moorehead		Approved by (Planning Section Chief) <i>/s/Les Rogers</i>			Date May 13, 2007		Time 1900		

DIVISION ASSIGNMENT LIST			1. Branch Sweat Farm Fire		2. Division/Group Prevention Team Task Force		
3. Incident Name Georgia Bay Complex			4. Operational Period Date: 5-14-07 Time: 0700 - 2000				
5. Operations Personnel							
Operations Chief		David Abernathy O-738 5-19 Rich Gray O-77 5-15		Division/ICT3			
Branch Director				Safety Officer			
6. Resources Assigned this Period							
Strike Team/Task Force/ Resource Designator	Leader / Name	Last Shift Date	Number Persons	Trans. Needed	Drop Off PT./Time	Pick Up PT./Time	
Team Leader	John R. Warner	05/25					
Team Member	Sandra Taylor O-178	05/25					
Team Member/PIO	Donna Wilson O-30-2	RR					
Team Member	Rodger Lane O-580						
7. Control Operations							
8. Special Instructions							
9. Division/Group Communication Summary							
Function	Frequency	System	Channel	Function	Frequency	System	Channel
Command		King NIFC		Logistics		King NIFC	
Tactical Div/Group		King NIFC		Air to Ground		King NIFC	
Prepared by (Resource Unit Leader) Gibbs/Moorehead		Approved by (Planning Section Chief) /s/Les Rogers		Date 5/13/07		Time 1900	

WEATHER FORECAST**FORECAST NO:** 25**NAME OF FIRE:** Sweat Farm Road &
Bugaboo Scrub II**PREDICTION FOR:** Day & Evening Ops**UNIT:** Georgia Forestry Commission**SHIFT DATE:** Tue 05/14/07**SIGNED:** John Quagliariello**TIME AND DATE** 1800**Incident Meteorologist****FORECAST ISSUED:** 05/13/07

WEATHER DISCUSSION: High pressure along the Mid-Atlantic coast will build over the area through tonight, before shifting offshore on Tuesday. This high will bring strong easterly winds and dry conditions to the complex today.

The **main concern is:**

1. Strong easterly winds and dry conditions today.

WEATHER FORECAST DAY SHIFT MONDAY:

...Strong Easterly Winds and Dry Conditions Today...

WEATHER: Partly cloudy and breezy. Areas of smoke over Fargo.**MAX TEMPERATURES:** 81 to 85, except 78 to 82 near Fargo (24 hour trend ~ 8 degrees lower)**MIN HUMIDITY:** 35-40%, except 40-45% near Fargo (24 hour trend ~ little change)**20 FT WINDS:** East-northeast 8 to 12 mph with gusts to 18 mph, becoming east 14 to 18 mph with gusts to 27 mph around midday.**STABILITY/INVERSION:** No morning inversion. Mixing heights around 5500 ft. Dispersion index around 55. Haines Index 3.**WEATHER FORECAST NIGHT SHIFT MONDAY NIGHT:****WEATHER:** Clear. Areas of dense smoke over Fargo.**MIN TEMPERATURES:** 58 to 62, except 61 to 65 near Fargo.**MAX HUMIDITY:** Recovery around 70 percent near the fire and around 85 percent elsewhere.**20 FT WINDS:** East 10 to 15 mph with gusts to 23 mph early in the evening, becoming east-northeast 3 to 7 mph.**STABILITY/INVERSION:** Inversion around 800 ft developing after 9 pm. Dispersion index around 10.**OUTLOOK FOR TUESDAY:**

Mostly sunny and breezy. High temperatures 84-88, except 81 to 85 near Fargo. Minimum RH values 30 to 35%, except 36 to 41% near Fargo. East winds 5 to 9 mph, becoming east-southeast 12 to 16 mph with gusts to 22 mph around midday.

EXTENDED...WEDNESDAY THROUGH SATURDAY:

Wednesday: Partly cloudy. Lows around 60. Highs in the upper 80s. Southeast to east winds 8 to 12 mph.

Thursday: Partly cloudy with isolated showers and thunderstorms. Lows in the mid 60s. Highs in the mid 80s. Southwest winds 8 to 12 mph, becoming north.

Friday: Mostly clear. Lows in the upper 50s. Highs around 80. North winds 12 to 16 mph.

Saturday: Mostly clear. Lows in the mid 50s. Highs in the lower 80s. Northeast winds 10 to 15 mph.

TAILGATE BRIEFING SHEET 2 OF 2

☐ SAFETY MESSAGE

Incident:

**Georgia Bay Complex
Shift**

Date:

May 14, 2007

Time:

Day & Night

Major Hazards and Risks:

- Weather
- Snags
- Initial Attack
- Wildland Urban Interface
- Reburn near the line
- Complacency
- Driving/Travel
- Aircraft Operations

“Safety is an Attitude, approach every task with Safety First”

Slow down and follow the traffic plan at the ICP! Remember that white vehicles cannot be seen in white smoke, drive with headlights on and use flashers in heavy smoke. Be sure to use a spotter or get out and walk around vehicle before backing. Make sure the signals between driver and spotter are clear.

Drive defensively, especially in high traffic areas. The public may be out looking at the fires now that the roads are open again. Watch out for bicycles in town, kids don't understand the handling characteristics of large vehicles.

If any amount of precipitation is received in the area, roads and other surfaces will be very slick due to the accumulation of oils and fluids over the past few months. Do Not drive faster than road or weather conditions warrant!

Any personnel unable to attend the morning operational briefing must be briefed prior to going on-line to insure they have the information needed for the day's assignment. DIVS should take extra IAPs to use during the tailgate briefings for incoming resources. If you are not clear on anything, ASK!

Ticks, snakes, spiders, gnats, flies and more are out there. There are a lot of things here that will bite, sting, or just plain irritate you. Avoid if possible, seek medical treatment quickly when symptoms are present. Know what steps to follow in a Medical Emergency.

More water, more water, more water, Gatorade, more water.... **Drink more water now to prevent dehydration** later. By the time you feel thirsty, your body has already started a dehydration process. Rotate arduous and heavy task when possible in hot dry weather.

Safety Team : Brian Beisel, Harry Kepler,
Steve Snider, Tim Sampson, John Orton, Steve Snider
Larry Miller, Phil Spor & Glenn Bailey

Fire Behavior Forecast

<u>Forecast No. 25</u>	<u>Prediction for Day Shift</u>
<u>Name of Fire: Sweat Farm Road</u>	<u>Shift Date: Monday May 14, 2007</u>
<u>Time and Date Forecast Issued</u> <u>1800 hrs 5/13/2007</u>	<u>Signed: Brad Smith</u> <u>Fire Behavior Analyst</u>

Weather Summary (See Detailed Weather Forecast in the IAP):

Expect a significant increase in afternoon windspeeds. Afternoon 20-foot winds out of the east will range from 12-18 mph with gusts to 27mph. Minimum RH will range from 35-40%.

General Fire Behavior: Fuel moistures are at historic lows and are contributing to observed fire behavior that local experts describe as way beyond normal. High windspeeds today will be responsible for producing extreme fire behavior in all fuel types. The forecast windspeed and RH for today are the same conditions that produced the initial 12 mile run of the Bugaboo Scrub fire last Tuesday. Expect active fire behavior soon after the inversion lifts at 0900 becoming very active around noon. Extreme fire behavior is likely in all fuels (Pine/Southern Rough and Swamp shrubs) during the 1500 to 1900 time frame with peak activity near 1700. Surface fire will easily transition to crown fire in brush and timber during this time frame. Spotting out to ½ mile was observed in the swamp shrub fuels during the initial Bugaboo Scrub run. Sustained crown fire in the pine fuels has produced spotting out to 1 mile.

Specific Fire Behavior:

Fargo: There has been a lot of fire activity in the vicinity of Billy's Island and HWY 177 in Divisions WI and WH. Spot fires across 177 will develop quickly and could threaten H107 and the park boundary.

Sweat Farm Road: Reburn potential will increase this afternoon with the increased east winds. Reburn in the needle cast will be a threat to containment lines on the west perimeter. Reburn on lined spot fires may hold the highest potential for escape. There is a concern that east winds will increase interior fire activity east of DP 302 at the Division WB/WC break.

Highway 1: East winds should favor burnout operations along the east perimeter.

Initial Attack: Ignitions will be fast to develop in all fuel types behind strong east winds. There could be an increased number of ignitions due to reburn in needle cast and holdover lightning strikes.

Air Operations: Inversions will persist until 0900. There is the potential for significant smoke production that will reduce visibility along portions of the western perimeter.

Safety: As fire behavior levels transition from the moderate/active to the very active/extreme categories, the margin of error for firefighters is greatly reduced. We can make a tactical mistake on a moderate fire behavior day and get away with it. That same mistake on a very active or extreme fire behavior day may cost us more than we are willing to pay. Take the time to make sure that your tactical plan is sound and that the plan does not compromise firefighter safety.

INCIDENT ACTION PLAN SAFETY ANALYSIS										1. Incident Name Georgia Bay Complex		2. Date 5/14/2007		3. Time Day & Night Shift						
LCES* Analysis of Tactical Applications Lookouts Communications Escape routes Safety zones										Other Risk Analysis										
Branch	Indirect Fireline	Burn out Operations	Power lines	Night operations	Frontal Assault	Anchor Points	Extreme Conditions	Reburn Potential	Unburned Area	Insects, snakes	LCES Mitigations									
											Smoke	Transportation, 1 Hrs+	Communications	Structure Protection	Fatigue/hydration	Multi-aircraft	Other Risk Mitigations			
Sweat Farm	1, 3, 4, 5, 6, 7, 8, 10	1, 3, 4, 5, 6, 7, 8, 10	15	1, 8, 11, 19, 22, 35	1, 4, 5, 7, 8, 11, 22, 29	7	1, 6, 7, 8, 10	1, 3, 3, 5, 7, 7	1, 1, 3, 3, 5, 7, 7	2	1, 3, 4, 23, 27, 32, 33	20, 26, 28, 31, 33	1, 3, 10, 14	3, 5, 11, 19, 23, 25, 26, 27	18, 21	29, 30	18. Take plenty rest breaks and encourage to drink water NOW through briefings. 19. Watch out for complacency and fatigue. Utilize Fire Departments for structure protection. Tailgate briefings on WUI hazards. 20. Defensive driving will be addressed in all briefings. 21. All personnel must meet the 2:1 work/rest ratio. Line supervisors and Safety will monitor closely.			
	Fargo	1, 3, 4, 5, 7, 8, 10	1, 3, 4, 5, 6, 8, 10, 13	15	1, 8, 11, 19, 22, 35	1, 4, 5, 7, 8, 11, 22, 29	7	1, 6, 7, 8, 10	1, 3, 3, 5, 7, 7	1, 1, 3, 3, 5, 7, 7	2	1, 3, 4, 23, 27, 32, 33	20, 26, 28, 31, 33	1, 3, 10, 14	3, 5, 11, 19, 23, 25, 26, 27	18, 21	29, 30	22. Line Supervisors will provide clear, concise briefings. 23. Recognize, Communicate & Avoid Hazmat situations. 25. Review Structural "Watch Out" situations.		
		IA Groups (ICP, Manor, Sw	1, 3, 4, 5, 7, 8, 10	1, 3, 4, 5, 6, 8, 10, 13	15	1, 8, 11, 19, 22, 35	1, 4, 5, 7, 8, 11, 22, 29	7	1, 6, 7, 8, 10	1, 3, 3, 5, 7, 7	1, 1, 3, 3, 5, 7, 7	2	1, 3, 4, 23, 27, 32, 33	20, 26, 28, 31, 33	1, 3, 10, 14	3, 5, 11, 19, 23, 25, 26, 27	18, 21	29, 30	26. Ensure Traffic Planning is safe and enforced. Heed Defensive Driving techniques noted in Safety Messages. 27. Avoid trash dumps in line construction & avoid smoke from dumps 28. Relocate staging area when driving conditions warrant. 29. Air Attack and/or lead plane will always be in the air to coordinate aircraft.	
																			30. Personnel on ground will stay out of drop zones. 31. Use spotter when backing vehicle(s). 32. Use bandanna to filter smoke in heavy smoke areas.	
																		33. ALL vehicles and equipment must have lights on when running. Plastic colverts under some roads have burned and are collapsing under heavy loads, DIVS will coordinate which roads transport and tractors will use. GSP (912) 287-6500 : EMA (912) 287-4499.		
																	35. Use blinking lights or glow sticks on back of helmet or backpack to be seen by equipment operators.			

Prepared by (Name and Position)
ICS 215A Brian Beisel SOF1 (T)

North Georgia Bay Complex (Group 1)

INCIDENT RADIO COMMUNICATIONS PLAN		1. Incident Name Georgia Bay Complex		2. Date/Time Prepared 5- 13 -2007	3. Operational Period Date/Time 5- 14-2007
4. BASIC RADIO CHANNEL UTILIZATION					
Radio Type/Cache	Channel	Function	Frequency/Tone	Assignment	Remarks
King NIFC	1	Command Ware EMA Repeater	158.7825/162.2 153.7625/162.2 Narrow Band	Command Rpt	Sweat Farm
King NIFC	2	Okee North Repeater	164.575 /206.5 163.150 / 206.5 Narrow Band	Command Rpt	Big Turnaround ICP
King NIFC	3	GA Mutual Aid	154.280 154.280	Structural & Tactical	
King NIFC	4	911 & Structural Coordinator Rptr.	154.445/ 118.8 154.010/118.8	Emergency Traffic	This is a heavy traffic channel, use only for Emergency Traffic
King NIFC	5	Tactical	159.285 Rx & Tx	Fargo Group 2	Southern COMPACT
King NIFC	6	Tactical	168.050 Rx & Tx Narrow Band	Divs. E Divs. Y,Z,WB, WC	Fireline
King NIFC	7	Tactical	168.600 Rx & Tx Narrow Band	Divs. G Divs. Swing/IA	Fireline
King NIFC	8	Tactical	164.1375 Rx & Tx Narrow Band	Fargo Group 3 Divs. WA, EE,EF,EG,EH	Fireline
King NIFC	9	Tactical	168.775 Rx & Tx Narrow Band	Divs. H Divs. EA,EB,EC,ED	Fireline
King NIFC	10	Tactical	169.900 Rx & Tx Narrow Band	Divs. I, J, K Divs. E,AA,BB,CC,DD	Fireline
King NIFC	11	Tactical	168.200 Rx & Tx Narrow Band	Divs.A,B,C,D ICP Group, Fargo Group 1 DivWD,WE,WF,WG,WH	Fireline
King NIFC	12	Air to Ground	167.950 167.950/110.9 Narrow Band	Federal Air to Ground	
King NIFC	13	Air To Ground	159.390 Rx & Tx	Georgia Air to Ground	
King NIFC	14	Air Guard	168.625 168.625/110.9 Narrow Band	Air Emergency Only	Air Emergency Only
5. Prepared By (Communications Unit) Carl Bridges/ COML					

South Georgia Bay Complex (Group 2)

INCIDENT RADIO COMMUNICATIONS PLAN		1. Incident Name Georgia Bay Complex		2. Date/Time Prepared 5- 13 -2007	3. Operational Period Date/Time 5- 14-2007
4. BASIC RADIO CHANNEL UTILIZATION					
Radio Type/Cache	Channel	Function	Frequency/Tone	Assignment	Remarks
King NIFC	1	GFC Fargo Repeater	159.120/107.2 151.370/123.0	Command Rpt	Bugaboo Brush
King NIFC	2	Okee North Repeater	164.575 /206.5 163.150 / 206.5 Narrow Band	Command Rpt	Big Turnaround ICP
King NIFC	3	GA Mutual Aid	154.280 154.280	Structural & Tactical	
King NIFC	4	911 & Structural Coordinator Rptr.	154.445/ 118.8 154.010/118.8	Emergency Traffic	This is a heavy traffic channel, use only for Emergency Traffic
King NIFC	5	Tactical	159.285 Rx & Tx	Fargo Group 2	Southern COMPACT
King NIFC	6	Tactical	168.050 Rx & Tx Narrow Band	Divs. E Divs. Y,Z,WB, WC	Fireline
King NIFC	7	Tactical	168.600 Rx & Tx Narrow Band	Divs. G Divs. Swing/IA	Fireline
King NIFC	8	Tactical	164.1375 Rx & Tx Narrow Band	Fargo Group 3 Divs. WA, EE,EF,EG,EH	Fireline
King NIFC	9	Tactical	168.775 Rx & Tx Narrow Band	Divs.H Divs. EA,EB,EC,ED	Fireline
King NIFC	10	Tactical	169.900 Rx & Tx Narrow Band	Divs. I, J, K Divs. E,AA,BB,CC,DD	Fireline
King NIFC	11	Tactical	168.200 Rx & Tx Narrow Band	Divs.A,B,C,D ICP Group, Fargo Group 1 DivWD,WE,WF,WG,WH	Fireline
King NIFC	12	Air to Ground	167.950 167.950/110.9 Narrow Band	Federal Air to Ground	
King NIFC	13	Air To Ground	159.390 Rx & Tx	Georgia Air to Ground	
King NIFC	14	Air Guard	168.625 168.625/110.9 Narrow Band	Air Emergency Only	Air Emergency Only
5. Prepared By (Communications Unit) Carl Bridges/ COML					

ICS-206 MEDICAL PLAN	1. Incident Name	2. Date Prepared	3. Time Prepared	4. Operational Period
	Georgia Bay Complex	5/13/07	18:00	5/14/07 DAY & NIGHT SHIFT

5. Incident Medical Aid Station

Medical Aid Stations	Location	Paramedics	
		Yes	No
Medical Unit Big Turnaround 912-496-4359	100 yards west of ICP in the double wide trailer	X	
Medical Unit Georgia Bay 912-218-9101	Georgia Forestry Headquarters ICP	X	
John (Steve) Spangler 540-320-4838	Assigned By DIVS – Big Turnaround – East Divisions	EMT	

6. Transportation

A. Ambulance Services

Name	Address	Phone	Paramedics	
			Yes	No
Ware County EMS	Waycross Georgia (911 to activate)	912-281-9467 Linc 1*96*116	X	
Charlton Memorial EMS	1203 N Third St Folkston Ga (911 to activate)	888-255-4961 Linc 1*25*3468	X	
Fargo County EMS	Fargo (911 to activate)		X	
Air Ambulance Service				
Trauma 1	Jacksonville, FL (26 min/air)	1-800-223-4878	X	
AirMed	Augusta, GA (2 hrs/air)	888-792-9245	X	
Lifeflight	Jacksonville, FL (35 min/air)	877-870-7779	X	

B. Incident Ambulances

Name	Location	Paramedics	
		Yes	No
Ware County EMS	Waycross (Natl. Guard Armory - 718 Garlington Ave)	X	
Charlton EMS	Folkston	X	
Ware County EMS	Fargo (Fargo Unit – 41 First Street – Fargo, GA 31631)	X	

7. Hospitals

Name	Address	Travel Time		Phone	Helipad		Burn Center	
		Air	Grnd		Yes	No	Yes	No
Charlton Memorial	1203 N 3 rd St Folkston N30°50.54 W082°18.4	10 min	20 min.	912-496-2531	X			X
Satilla Regional	410 Darling Ave Waycross Ga N31°13.56 W82°21.058	15 min	30 min	912-283-3030	X			X
Shands Hospital (level I)	Jacksonville, FL N 30 20 97 W 82 13 992	45 min	1.5 hrs	800-223-4878	X		X	
Memorial Hospital	Savannah, GA 4700 Waters 3200.7 8107.6	40 min		912-350-8999	X			X
Shands Burn Center	Gainesville, FL 29 38.33 N 082 20.73W	45 min		352-265-0300	X		X	
Doctor's Hospital Joseph Still Burn Center	August, GA (Chief Burn Ctr 3328.943 8205.422	90 min	3 ½ hrs	877-863-9595 706-863-9595	X		X	

8. Medical Emergency Procedures

Identify any EMT's and Paramedics in your crews. All medical emergencies will be reported to the Division Supervisor who will assume command.

- Provide medical care & stabilize patient.**
- Call 911**
- Notify Communications via radio or cell phone (936)545-6198.**
- Communications will clear radio traffic for medical emergency.**
- Notify Dispatch, provide ONE on site contact person, notify dispatch if that changes..**
 - Provide location (road intersection, GPS coordinates).
 - Number of patients
 - Type of injury or illness – Is it life threatening? Provide vital signs if available.
 - EMT's on scene and/or needed
 - Type of transportation needed
- Com will notify ambulance and coordinate with IC, SOF, MEDL**

Helibase – ICP Waycross: 31 07.23 X 82 15.23
Helispots – Fargo Base Camp: 30 47 30.02 X 82 22 39.5 (4 mi mrker Hwy 177 – Stephen C. Foster St. Prk)
and 30 41.739 X 82 33.961 (Hwy 44 - golf course)

9. Prepared by (Medical Unit Leader) Susan Long (912) 218-9101 Linc 1*18*7480	10. Reviewed by (Safety Officer) Brian Beisel SOF (912)218-7726 Linc 1*18*4223
---	--

AIR OPERATIONS SUMMARY		PREPARED BY: P.J.Pearson			PREPARED DATE/TIME 5/13/07 1600	
1. INCIDENT NAME: Sweat Farm Road Fire		2. OPERATIONAL PERIOD: Day Shift 5/14/07		START TIME: 0700	END TIME: 2000	SUNRISE: 0638 SUNSET: 2013
3. REMARKS (Safety Notes, Hazards, Air Operations Special Equipment, etc.): High Towers in Area Look Up, Look Down, Look Around Waycross Helibase—31 14.95 X 82 23.73 Pogo Helibase-30 18.25 X 82 07.69 ICP Helibase 31 07.23 X 82 15.23 All dispatches will come through the ICP in Waycross for state aviation resources LOOK UP, LOOK DOWN, LOOK ALL AROUND				4. MEDEVAC A/C: N17HX—Pogo Helibase		5. TFR: In Place Radius: Rectangle to 3000 MSL_ Altitude: _3000= MSL NW corner Lat 31 09 02 Long 82 32 04 SE corner Lat 30 53 17 Long 82 02 48:
6. PERSONNEL		Phone	7. FREQUENCIES	AM	FM	8. FIXED-WING # Avail / Type/ Make-Model / FAA N# / Base(s)
AOBD: P.J.Pearson 979-220-1217 AOBD: Mike Catron 859-749-2469 AOBD: Lynn Howard (T) 423-879-0533 AOBD: Ron Hollifield-Lake City			AIR/AIR FW:	122.575 122.825 122.925	167.950	Airtankers 00-Type I 20-Type I 22-Type I 9- Type II 10-Type II
ATGS: L.Mars—Waycross O. Martin(T) Waycross K. Walsh--Waycross C.Cross-Lake City			AIR/AIR RW:	122.575		
State Aviation Lead Waycross Airport Mike Leverette			AIR/GROUND:	122.925	151.145	Leadplanes Lead B-2 ASM Lead 1-4 Base FAX #:
ASGS: John Vinson-Pogo Bob Yeager-Lake City		352-671-7511	COMMAND:			
HEBM: Lon Patterson (T)-- Waycross		979-220-0522	COMMAND RPT	Rx:	Tx:	ATGS Aircraft 90K—Beach Baron—L. Mars w/ O.Martin (T) 01Q—Cessna 401—K. Walsh 82-Z—King Air—C.Cross Lake City
ATB MGR:			DECK FREQ:			
HEBM: Tom Kennedy (TK) 912-496-4415 HEBM: Mike O'Leary (POGO) 239-450-2481 HEBM: Dave Langley 505-240-3649			TOLC FREQ:			Other Flight follow with Pogo Helibase or Waycross Helibase IA Air Attack for State--- Cessna 182's and CH-47 or UH 60's Bell 407-Chopper 7 IA for the Okefenokee is 38Y (Okee 6) Approved Helispots—Refer to Okefenokee NWR Despite Map One GNG Helicopter will remain at Waycross Airport for IA at all times
Pogo Helibase 912-496-4415 Waycross Dispatch 912-338-5982			FLIGHT FOLLOW		RX 164.625 TX 163.150 TONE 103.5	

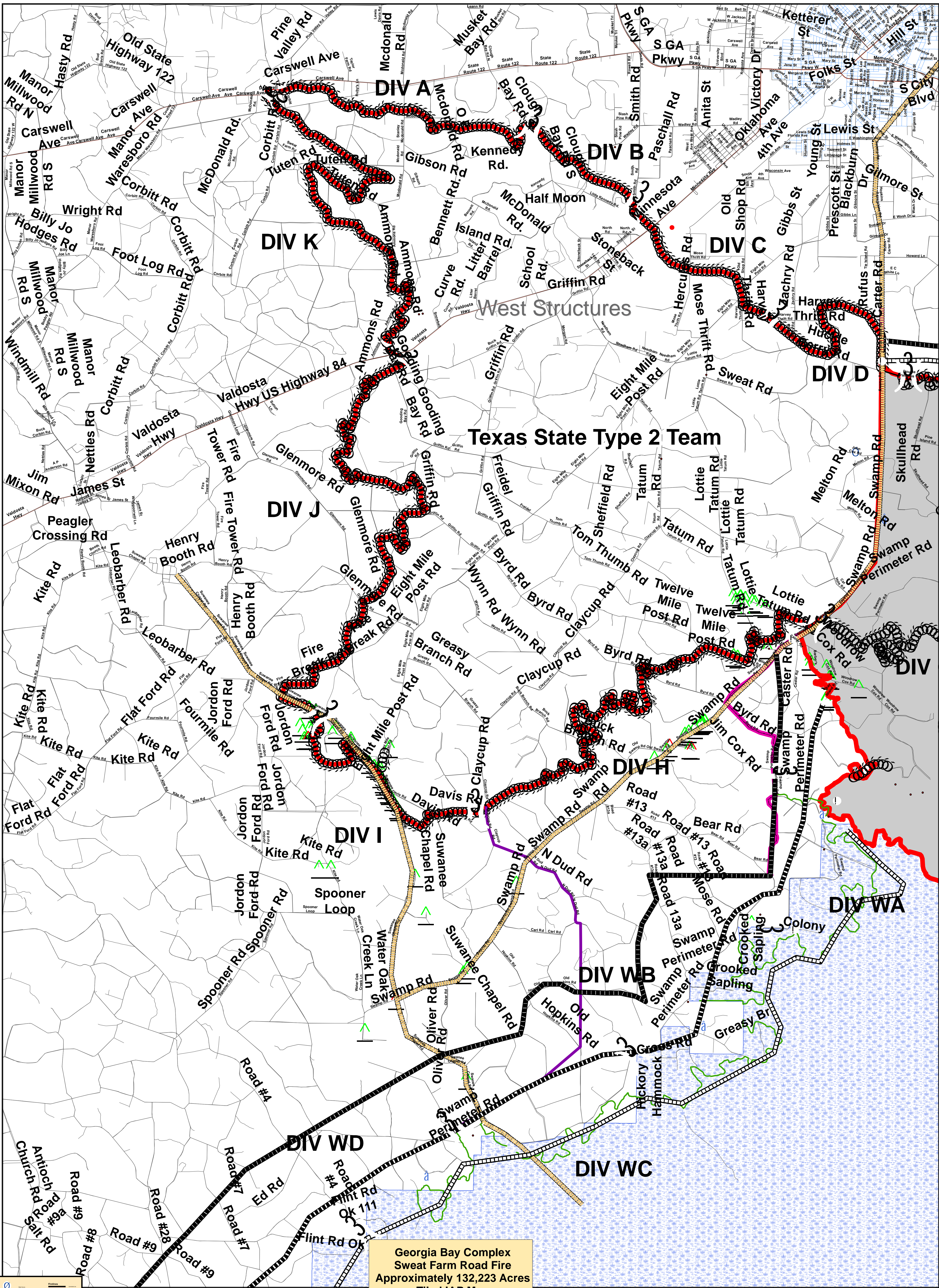
Fargo Helibase—(GolfCourse) N 30 41 27.3 x W 82 34 02.0 Stephen Foster SP (Pocket) N30 47 32.2 x W82 22 39..6						ALL AIRCRAFT Call Air Attack when entering TFR--- Waycross Helibase will call Pogo as a back up!!! NOTE NEW HELIBASE LOCATIONS
--	--	--	--	--	--	--

9. HELICOPTERS (Use Additional Sheets As Necessary)

FAA N#	TY	MAKE/MODEL	BASE	AVAIL	START	REMARKS	FAA N#	TY	MAKE/MODEL	BASE	AVAIL	START	REMARKS
N5BH	I	Sikorsky S-70A-27	Pogo	0900	0930	Bucket Drops	N5738Y	III	Bell 206	Pogo	0900	0930	Recon/ Admin/ IA
N4503E	I	Sikorsky S-61N	Pogo	0900	0930	Bucket drops	N12HX	III	Bell 407	Pogo	0900	0930	Admin/ Recon
N15HX	II	Bell 205++	Pogo	0900	0930	Bucket drops	Chopper 7	III	Bell 407	Waycross	0900	0930	State IA-Bucket drops as needed
N17HX II	II	BELL 205++	Pogo	0900	0930	Bucket Drops	90K	I	Baron	Waycross	0900	0930	ATGS
	I	UH-60	Waycross	0900	0930	IA for State	62-Z	I	King Air	Lake City	0800	0930	ATGS
	I	UH-60	Waycross	0900	0930	IA for State							
	I	CH-47	Waycross	0900	0930	IA for State							
01Q	i	Cessna 401	Waycross	0900	0930	ATGS							
		Cessna 182	Waycross	0900	0930	Aerial Detection							

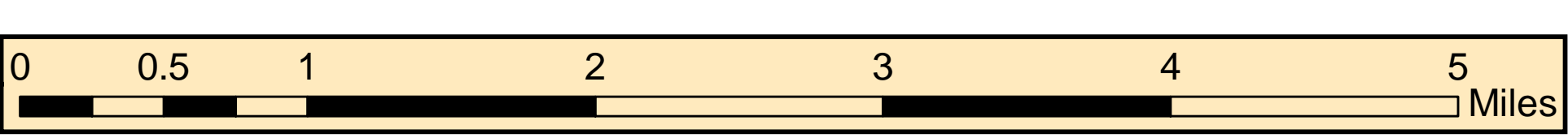
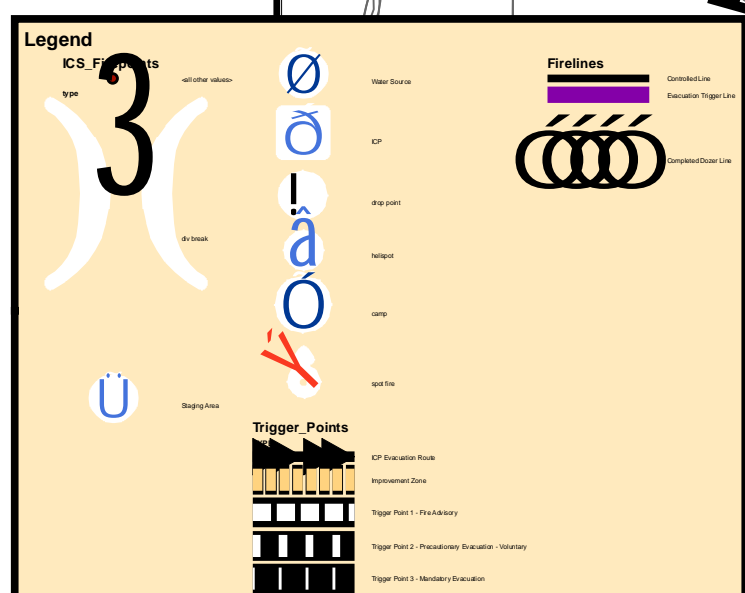
10. TASK/MISSION/ASSIGNMENT (Type/Function includes: Air Tactical, Retardant, Recon, Personnel Transport, Water Dropping, S&R, etc.)

TYPE/FUNCTION	NAME OF PERSONNEL OR CARGO (if applicable) OR INSTRUCTIONS FOR TACTICAL AIRCRAFT	MISSION START	FLY FROM	FLY TO
Type II Helicopter	Operation and Logistic Support	0930	Helibase	Fire and Return
Type III Helicopter	Operation and Logistic Support	0930	Helibase	Fire and Return
Type I Helicopter	Operation and Logistic Support	0930	Helibase	Fire and Return
ATGS Platforms	Aerial Supervision of all Aircraft over Incidents	0930	Waycross Airport & Lake City	Fire and Return
State Detection Fixed Wing	Aerial Detection and IA for New Fire Starts	0930	Waycross Airport	Fire and Return

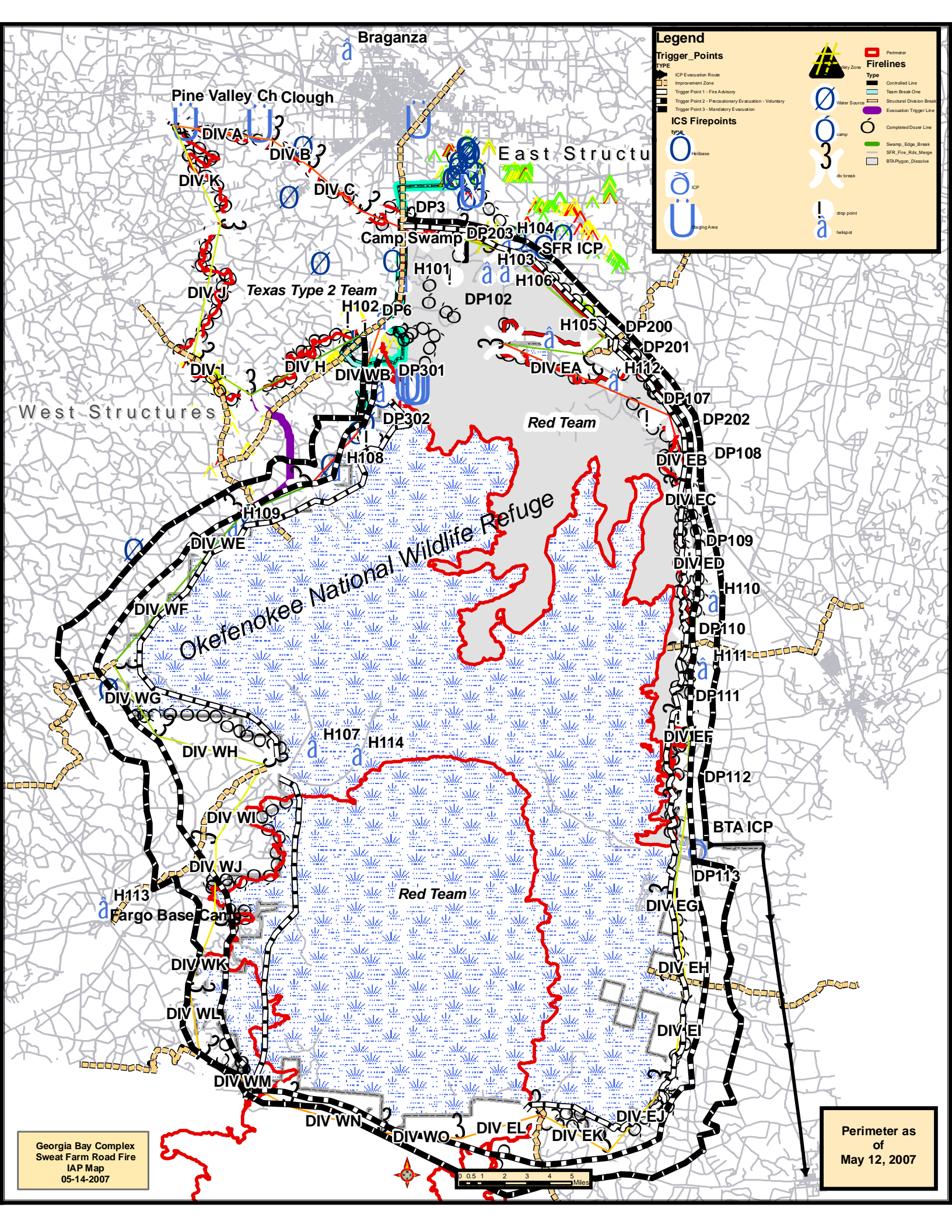


Georgia Bay Complex
 Sweat Farm Road Fire
 Approximately 132,223 Acres
 Tiled IAP Map
 05-14-2007

WestSection



Map By: Charles O. Bailey
 May 10, 2007
 Perimeter as of
 May 11, 2007 2300

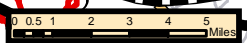


Legend

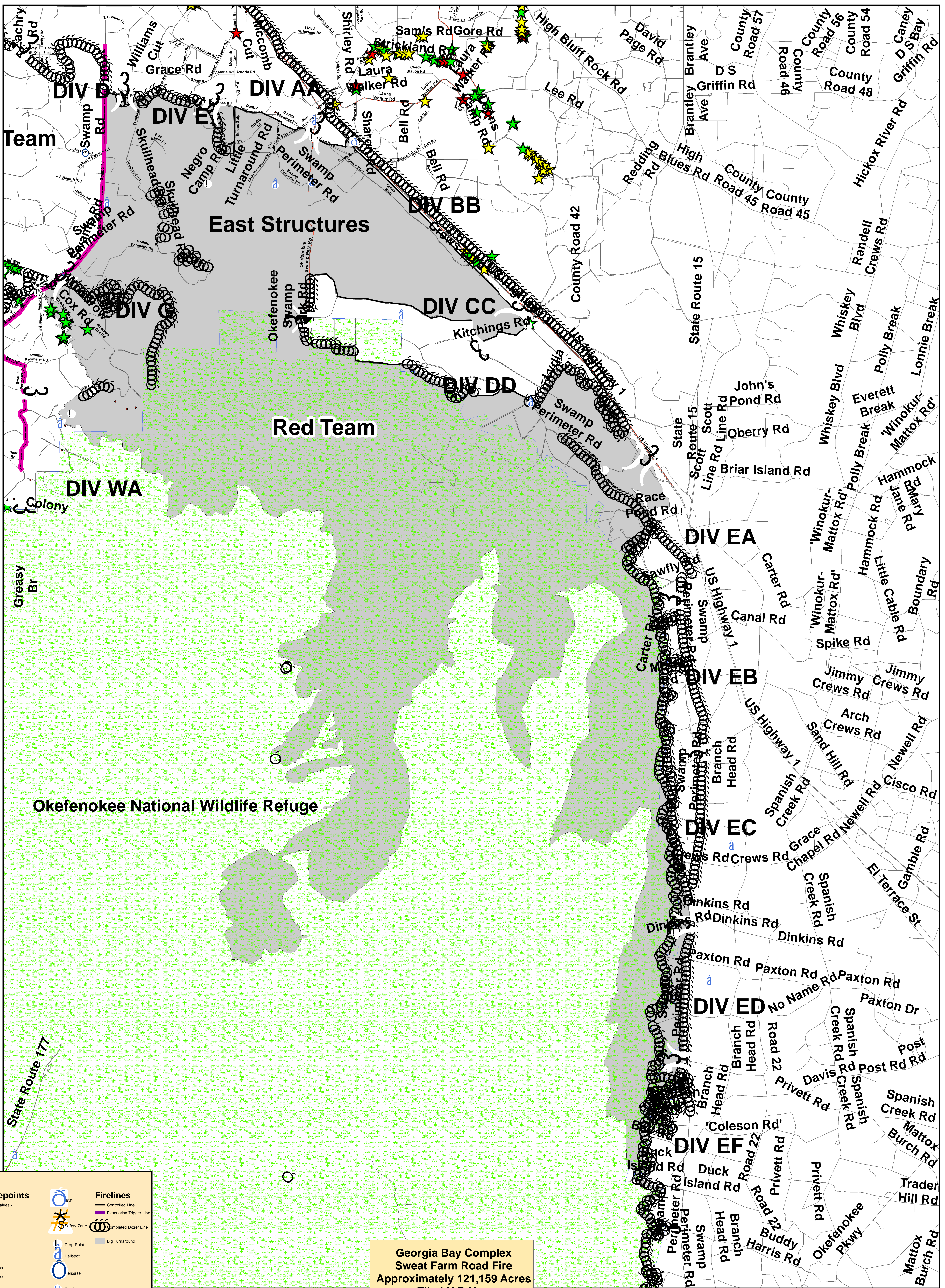
Trigger Points		Firelines	
Type	Symbol	Type	Symbol
ICP Evaluation Route	[Yellow dashed line]	Perimeter	[Red solid line]
Improvement Zone	[Orange dashed line]	Controlled Line	[Blue dashed line]
Trigger Point 1 - Fire Advisory	[Blue circle with slash]	Team Break One	[Blue dashed line]
Trigger Point 2 - Precautionary Evacuation - Voluntary	[Blue circle with slash]	Structural Division Break	[Blue dashed line]
Trigger Point 3 - Mandatory Evacuation	[Blue circle with slash]	Evacuation Trigger Line	[Purple dashed line]

ICS Firepoints		Other Symbols	
Type	Symbol	Type	Symbol
Helibase	[Blue circle]	Completed Dozer Line	[Green line]
ICP	[Blue circle with slash]	Swamp_Edge_Break	[Green line]
Staging Area	[Blue circle with slash]	SFR_Fire_Rds_Merge	[Green line]
		BTA Polygon_Dissolve	[Grey area]
		div break	[White line]
		drop point	[Blue circle]
		helibase	[Blue circle]

Georgia Bay Complex
Sweat Farm Road Fire
IAP Map
05-14-2007



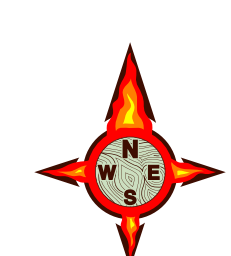
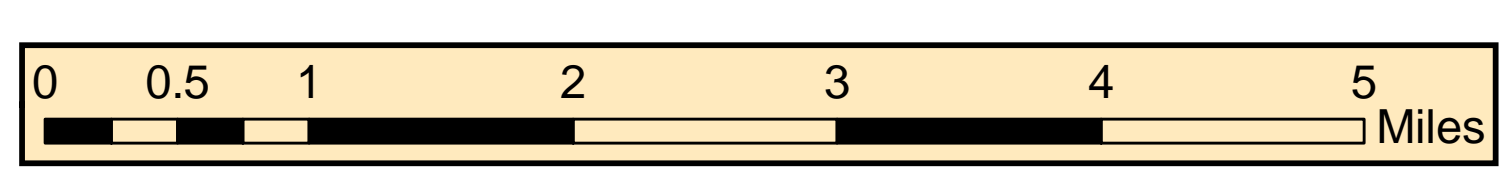
Perimeter as
of
May 12, 2007



Legend

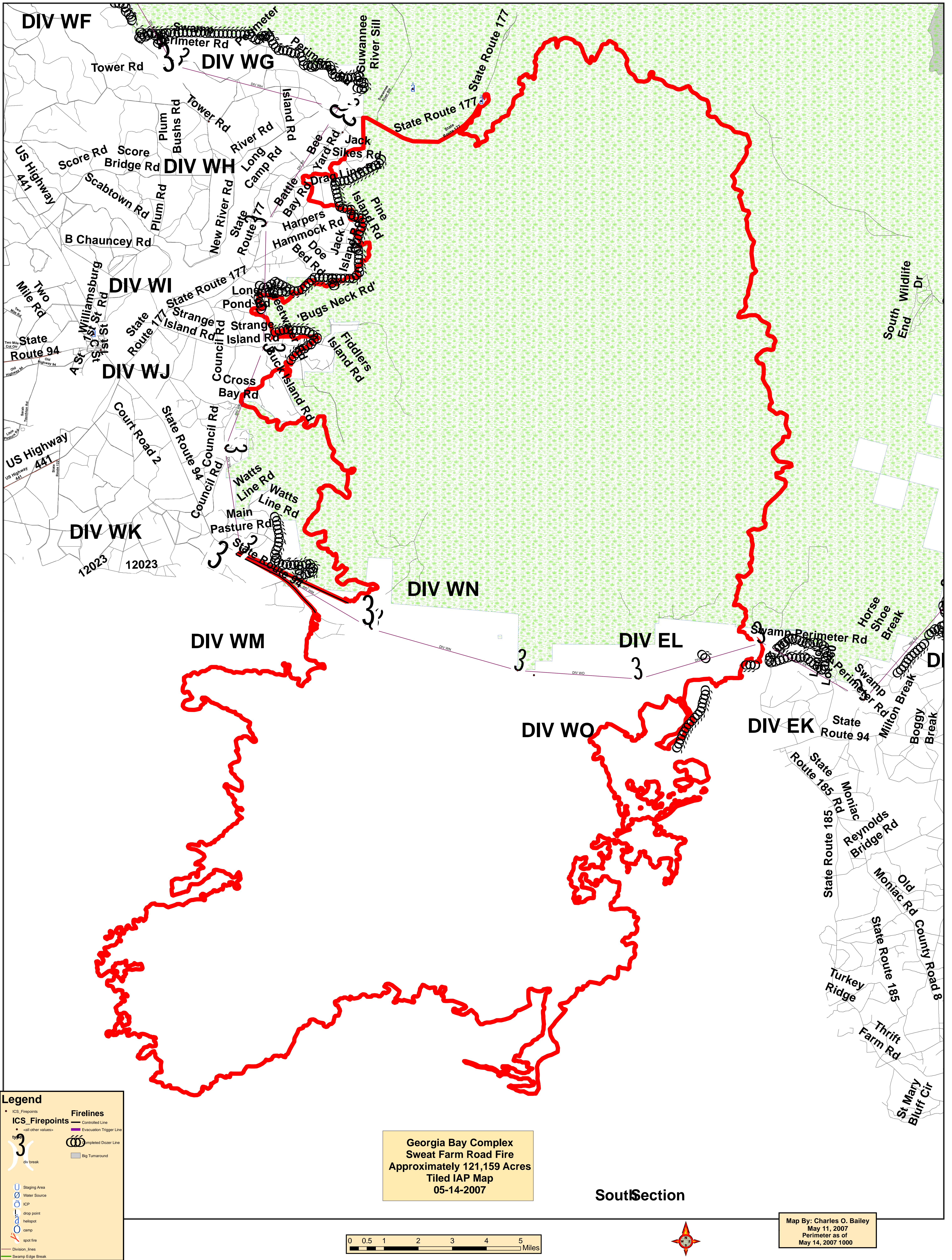
ICS_Firepoints	Firelines
• -all other values-	Controlled Line
3	Evacuation Trigger Line
3	Completed Dozer Line
3	Drop Point
3	Helispot
3	Staging Area
3	Water Source
3	ICP
3	drop point
3	helispot
3	camp
3	spot fire
3	DIV Break

Georgia Bay Complex
Sweat Farm Road Fire
Approximately 121,159 Acres
Tiled IAP Map
05-14-2007



Map By: Charles O. Bailey
May 11, 2007
Perimeter as of
May 13, 2007 1000

East Section



DIV WF

DIV WG

DIV WH

DIV WI

DIV WJ

DIV WK

DIV WN

DIV WM

DIV EL

DIV WO

DIV EK

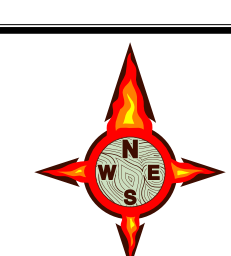
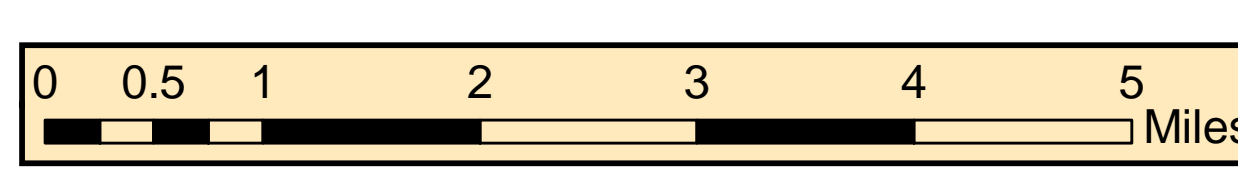


Legend

- ICS_Firepoints
- ICS_Firepoints - call other values
- div break
- Staging Area
- Water Source
- ICP
- drop point
- hottspot
- camp
- spot fire
- Division Lines
- Swamp Edge Break
- Firelines
- Controlled Line
- Evacuation Trigger Line
- Completed Dozer Line
- Big Turnaround

**Georgia Bay Complex
Sweat Farm Road Fire
Approximately 121,159 Acres
Tiled IAP Map
05-14-2007**

South Section



Map By: Charles O. Bailey
May 11, 2007
Perimeter as of
May 14, 2007 1000

Sweat Farm Road Phone Roster 5-13-07

NAME	POSITION	PHONE NUMBERS	LINC ID
PLANNING		912-285-6046	
Les Rogers	PSC	979-218-2403	18*6871
Dan Oshocki	SITL	970-903-1957	
Brian Pope	SITL(t)	936-546-3164	
Russell Lykins	SITL(t)	936-546-1616	
Richard Gibbs	RESL	979-220-0577	
Wes Moorehead	RESL(t)	936-546-1642	
Rusty Brown	CTSP	479-973-6231 (P)	
Brad Smith	FBAN	979-220-1389	
Doug Williams	FOBS	912-218-9316	18*11828
Eric Morgan	FOBS	208-659-9347	
Jacob Hoppe	FOBS	912-218-9358	18*12670
Charles Bailey	GISS	912-285-6052	
Kevin Winter	GISS	912-285-6052	
Buster Robinson	GISS	936-546-8783	
John Quagliariello	IMET	912-218-9309	18*10247
Rich Dottellis	DOCL	936-546-3138	
Carl Lunggrin	DMOB	912-218-9361	18*12771
Scott Corley	SCKN		
Jason Keiningham	SCKN(t)	979-218-3108	
Shawn Whitley	SCKN(t)	936-545-7184	
Dennis Evans	THSP	912-218-8325	18*7145
Lewis Kerney	TNSP	423-650-3006	
LOGISTICS		912-285-6091 Fax 912-285-6111	
Susan Cornett	LSC	936-546-1952	
Carl Bridges	COML	936-545-6198	
Susan Long	MEDL	912-218-9101	18*7480
Roger Atkinson	SECM	479-970-3038	
Wayne Garmen	BCMG	912-218-9141	18*11862
Kelly, Steven	BCMG- Fargo	912-218-9360	18*12765
Kevin Pierce	BCMG(t)	936-546-1523	
Chuck Barber	Camp Crew Manager	912-218-9342	18*12299
Georgia State Patrol	Dispatcher	912-287-6500	
Michelle Sanchez	EQPM	912-218-9308	18*10090
Keith Skinner	EQPM	936-546-8133	
Jimmy Caldwell	FAC	912-218-9215	18*11832
Terry Seward	FDUL	912-218-9321	18*11964
William Lee	Fuel Truck	912-218-9017	18*6682
Guy Gillispe	Ground Support	912-218-7103	18*6748
Mike Summers	GSUL	936-546-1957	
John Wall	Hotel Manger	912-218-9354	18*12616
Sussie Burford	IADP	936-546-3071	
Terry Lemmon	ORDM	936-546-1953	
Daniel Wilson	RCDM	936-546-1729	
Larry Bennett	SUPL	936-546-1732	
Steve Moore	FARGO	912-218-9344	18*12374
Stephen Kelley	BCMG (FARGO)	912-218-9360	18*12765
MISC.			
COMMAND DISPATCH		912-218-9044	18*6870
PUBLIC INFORMATION		912-218-9319	18*11959
WAYCROSS DISTRICT OFFICE		912-218-7695	18*11671
MACON DISPATCH		912-218-9232	18*7378
RED TEAM		912-496-4173	
BLUE TEAM		386-719-2748	Fax 386-719-2740
MOP UP COMMAND			18*4918
FARGO BASE		912-218-8907	18*7532

Sweat Farm Road Phone Roster 5-13-07

NAME	POSITION	PHONE NUMBERS	LINC ID
COMMAND & GENERAL STAFF		912-285-6046	Fax 912-285-6014
Paul Hannemann	IC	912-218-5108	18*11878
Billy Leitch	LOFR	912-218-9325	18*12022
Shane Crimm	LOFR	912-218-9306	18*7065
Shawn Alexander	LOFR	912-218-9232	18*7378
Skippy Reeves	LOFR	912-2189359	18*12756
Warren Bielenberg	PIO	912-218-9319	18*11959
John Warner	PRTL	936-546-3164	
Donna Wilson	PRTM	540-797-6241	
Sandra Taylor	PRTM	936-546-3554	
Brian Beisel	SOF	912-218-7726	18*4203
Glenn Bailey	SOF	918-465-6213	18*4451
Harry Kepler	SOF	912-218-8325	18*7145
John Orton	SOF	912-218-4958	18*4899
Larry Miller	SOF	912-218-9355	18*12622
Phil Spor	SOF	912-218-8965	18*7610
Robert DelMonte	SOF	912-218-9317	18*11849
OPERATIONS		912-285-6039	
David Abernathy	OSC	912-218-5414	18*11904
Rich Gray	OSC	979-218-2406	18*11907
Bill Woodyard	OPBD	912-218-9323	18*11981
Bill Bryant	OPBD	912-218-8343	18*4212
George Glenn	TFLD	706-551-2324	
Brendon McNeil	TFLD (t)	979-220-1406	
Bob Habeck	DIVS	912-218-9324	
Brian Drinville	DIVS	912-218-9343	18*12314
Heath Morton	DIVS	912-218-7135	18*11946
Jeff Davis	DIVS	912-218-9320	18*11960
Jim Davis	DIVS	912-218-9307	18*10062
Mike Benefield	DIVS	912-218-8226	18*4523
Nate Leising	DIVS	912-218-9352	18*12520
William Johnson	DIVS	912-218-7132	18*11923
David Zeigler	DIVS (t)	936-546-3085	
Rusty Smith	DIVS (t)	936-546-3104	
Mike Heath	LE/Arson	912-282-3441	
Ron Baar	STEN		
Mike Purcell	STEN	706-237-0718	
BIG TURNAROUND OPS SEC		912-496-4173	
CSX RAIL ROAD OPERATIONS- Dixon		912-270-0699	
AIR OPERATIONS		912-285-6039	
Lon Patterson	HCMG	979-220-0522	
Don Mitchell	Air ASGS	912-218-9358	18*12670
TY Isbell	Air Ops	912-218-8937	18*6167
P.J. Pearson	AOPD	979-220-1217	
FINANCE		912-285-6038	
Jill Lipsey	FSC	979-218-3106	
Nancy Cosgriff	Buying Team	912-285-9360	18*12765
Carolyne Riggs	COST	936-546-1967	
Stephanie Elledge	EQTR(t)	936-546-3415	
Penny Brown	Procurement	912-265-6038	
Karen Stripling	PTRC	936-546-1153	
Jean Frick	TIME	912-285-6052	

OTHER INCIDENT MANAGEMENT TEAMS

SOUTHERN RED TEAM: BIG TURNAROUND Phone Roster 5-13-07

NAME	PHONE NUMBERS		
COMMAND STAFF	912-496-4177		
PLANNING	912-496-4173		
OPERATIONS	912-496-4132		
AIR OPERATIONS	912-496-4415		
FINANCE	912-496-4102		
LOGISTICS	912-816-5749		
EXPANDED DISPATCH	912-496-3162		
COMMUNICATIONS	912-496-2111		

Big Turnaround Command Staff

Mark Ruggiero	ICT1	850-766-4398	912-496-4177
Mary Bell Lunsford	PIO1	404-354-3943	912-496-4176
Heather Callahan	PIO	850-559-6854	912-496-4176
Larry Richardson	PIO	239-253-6805	912-496-4176
Terry McDonald	PIO	423-596-0828	912-496-4176
Haven Cook	PIO	404-354-5027	912-496-4176
John Walker	SOF1	601-416-4687	912-496-4181
John Daly	SOF2	904-315-1013	
Larry Holsomback	SOF2	706-280-4716	

Big Turnaround Operations Section

Bobby Kitchens	OSC1/Planning	334-488-4378	912-496-4132
Jim Durrwatcher	OSC1	850-766-1254	912-496-4132
Greg Chandler	OSC1	541-840-6720	
Mike Dueitt	OSC1	601-497-0608	912-496-4132
Mark Jamieson	OSC1	985-285-3619	
Louie Casaus	OSC2	404-354-4793	
Dennis Hackett	DIVS	352-279-6977	
Ed Boynton	DIVS	775-296-0467	
George Bukenhoffer	DIVS	404-375-2360	
Jay Northcott	DIVS	505-430-1130	
Kyle Smith	DIVS	864-429-6059	
Mike Cook	DIVS	205-272-2426	
Pete Myers	DIVS	386-867-2394	
Steve Guckian	DIVS	352-279-4784	
Wayne Ichiyasu	STEN	303-589-3433	
Daniel Duncum	STLD	936-546-3143	
Greg Jackson	TFLD	775-721-2638	
Ron Graham	TFLD	505-756-4402	

SOUTHERN BLUE TEAM: FLORIDA BUGABOO Phone Roster 5-13-07

NAME	PHONE NUMBERS		
INFORMATION	386-719-2739		
OPERATIONS	386-719-2743		
COMMUNICATIONS	386-719-2748		
FLORIDA INTERAGENCY COORDINATION	850-580-6885		

Florida Bugaboo Operations Section

Danny Bryant	OSC1	601-209-2866	
James Isaacs	DIVS	304-406-1704	
Jeff Koenig	DIVS	540-622-0431	
Larry Luckett	DIVS	770-718-7064	
Dave Martin	DIVS (T)	423-584-2808	
Steven Parrish	DIVS	850-524-1244	
Greg Sanders	DIVS	540-529-3376	
Glen Stratton	DIVS	321-403-7638	
Steven Parrish	DIVS	850-524-1244	

IMPORTANT FINANCE INFORMATION

ALL CREW TIME REPORTS AND EMERGENCY EQUIPMENT SHIFT TICKETS SHOULD BE TURNED IN TO FINANCE AT THE END OF EACH SHIFT ON A DAILY BASIS. SUPERVISORS SIGNING THESE TIME REPORTS SHOULD ENSURE THE FOLLOWING:

- **PLEASE WRITE THE FIRE NAME YOU ARE WORKING ON YOUR CTR'S AND/OR SHIFT TICKETS – THIS IS VERY IMPORTANT FOR FEMA REIMBURSEMENT.**
- **THE “O” NUMBER SHOULD BE LISTED ON THE CREW TIME REPORT**
- **COMPLETE 1 (one) CREW TIME REPORT FOR EACH PERSON WITH AN “O” NUMBER**
- **“E” NUMBERS SHOULD BE LISTED ON THE EMERGENCY EQUIPMENT SHIFT TICKET(S)**
- **CORRECT DATES ARE IMPERATIVE!**
- **SUPERVISORS – PLEASE REVIEW THE CTR'S/SHIFT TICKET'S YOU ARE ASKED TO SIGN**