



Sweat Farm Fire

Incident Action Plan

Thursday

June 14, 2007

All Operational Periods



TROY

BUCK

RICH

STEVE

BRANTLEY

W. R. Wattson, February 1918 Oklahoma



GEMA

INCIDENT OBJECTIVES	1. Incident Name Sweat Farm and Bugaboo Fires	2. Date Prepared 6/13/07	3. Time Prepared 1830
4. Operational Period 06/14/2007 All Operational Periods			
5. General Control Objectives For The Incident (Include Alternatives)			
<ol style="list-style-type: none"> 1. Provide for the safety of the public and assigned incident resources through effective hazard / risk assessment and mitigation. 2. Provide timely and accurate information updates to the GFC, cooperators, affected communities, and other stakeholders. 3. Provide accurate cost accountability and documentation of expenditures for the duration of the incident. 4. Develop and maintain coordination with local fire departments, local EOC directors, GEMA, other IMT's deployed in the area, GOAL, and private industry. 5. Provide support on fires as requested by Georgia GFC District 8 and District 10. 6. Conduct all incident activities in a manner free of discrimination, harassment, and inappropriate behavior. 7. Keep the Sweat Farm Road, Kneeknocker, and Roundabout fires contained within the current established perimeters. 8. Assist with identifying and mitigating Emergency & Temporary Repairs. 			
6. Weather Forecast For Period			
WEATHER: Partly Cloudy. Scattered afternoon showers and thunderstorms. Chance of measurable rain 30%.			
MAX TEMPERATURES: 84-88 (24 hour trend: Steady)			
MIN HUMIDITY: 38 to 43% (24 hour trend: Steady)			
20 FT WINDS: Northeast winds 3-8 through 1000, then East 5-10 mph, with gusts up to 15 mph. Becoming East-southeast 5 to 10 mph, with gusts up to 20 mph around 1600.			
STABILITY/INVERSION: Mixing heights near 6600 ft. Afternoon Dispersion index 40. Haines Index 4 (Low). Transport winds E 9-13. Nocturnal inversion lifting and dissipating around 0900.			
LAL: 3			
	Sweat Farm Rd.	Bugaboo Scrub II	Roundabout
<i>Max Temperature:</i>	85-88°	84-87°	85-88°
<i>Min Humidity:</i>	38-43%	42-45%	36-41%
<i>Seabreeze Passage:</i>	1630	1600	1700
7. General Safety Message			
SEE ATTACHED SAFETY MESSAGE.			
8. ATTACHEMENTS (X IF ATTACHED)			
<input checked="" type="checkbox"/> Organization List - ICS 203	<input checked="" type="checkbox"/> Division Assignment List - ICS 204	<input checked="" type="checkbox"/> Phone List	
<input checked="" type="checkbox"/> Fire Behavior Forecast	<input checked="" type="checkbox"/> Air Ops Summary-ICS 220	<input checked="" type="checkbox"/> Maps	
<input checked="" type="checkbox"/> Weather Forecast	<input checked="" type="checkbox"/> Communications Plan - ICS 205	<input checked="" type="checkbox"/> Unit Log- ICS 214	
<input checked="" type="checkbox"/> Safety Message	<input checked="" type="checkbox"/> Medical Plan - ICS 206	<input type="checkbox"/>	
9. Prepared By (Planning Section Chief) Vicky Edge		10. Approved By (Incident Commander) Troy Floyd	

ORGANIZATION ASSIGNMENT LIST		9.	Operations Section	
1. Incident Name		Field Ops	Brantley McManus	
Sweat Farm Fire		Planning Ops	Rich Gray/Steve Gray (T)	
2. Date	3. Time	a.	North Branch	
June 13, 2007	2000	Branch Director	Brent McCarty	
4. Operational Period		Branch SOF	Charles Wood	
June 14, 2007 All Operational Periods		Division/Group	A,B,C,D	Pearson / Stewart
5.	Command	Division/Group	J	Steve Abbott
Incident Commander	Troy Floyd	Division/Group	K	Larry Bennett
Liaison	Buck Kline	Division/Group	Z	David Colton
Liaison				
NC Liaison	Keith Suttles			
Safety Officer	Munns/Godwin/Hawkins (T)			
Information Officer	Bruner/Stone/Swinney/Spinrad			
Human Resources	Sherri Cummings (T)			
6.	Agency Representatives	b.	South Branch	
Agency	Name	Branch Director	Levy Rentz	
GFC District 8	Frank Sorrells	BranchSafety	Phil Spor	
GFC District 10	Willard Fell	Division/Group	I, WW, WX, WP	Reed Callis
GFC Protection Dept	Alan Dozier	Division/Group	WA, WQ, WR,H	Shawn Alexander
GEMA	Dan Yeargin	Division/Group	WB,WD,WO	Jerome Harvey
GOAL	Skippy Reeves	Division/Group	Fargo	Eric Harris
Okefenokee NWR	Maury Bedford			
Superior Timber	Andy Stone			
GA DNR	Joe Yeager			
7.	Planning Section			
Chief	Vicky Edge			
Resources Unit	Thomas Barrett/Jamie Leigh-Powell (T)			
Situation Unit	Steve Chapman			
Documentation Unit	Jamie Leigh-Powell			
Demobilization Unit	Harold West/Paul Dore			
CTSP	Trey Spivey/Rusty Brown			
THSP	Ken Luckow			
Incident Meteorologist	Daniel Byrd	e.	Special Groups	
Status/Check In	Sharon Hale/Keith Murphy	Group	LE/Arson	Mike Heath
GIS	Barnes / Bailey / Blount			
Infrared Interpreter	Brenda Miller			
8.	Logistics Section			
Chief	Willie Boston/ SusanCornett	f.	Air Operations Branch	
Facilities Unit	Tom Lambert/Jimmy Caldwell	Air Operations Branch Director	George Martin	
Hotel Managers	Jeremy Hughes/John Wall	Air Support Supervisor	Johnny Stephens	
Supply Unit	Terry Lemmon	Helibase Manager	Kevin Kozak	
Food Unit	Scott Roper	Air Tactical Group Supervisors	Tom Dorigan/Joel Lane	
Base Camp Manager	Dunets	GFC Air Operations	Mike Leverette	
Base Camp Manager	Jones/Knapp	10.	Finance Section	
Ground Support Unit	Mike Summer/Michele Sanchez	Chief	Grace Reid	
Equipment Manager	Willie Griffis	Incident Business Advisor	Jill Lipsey	
Ordering Manager	Berger/Guzman	Time Unit Leader	Vickie Kitchens	
Security Manager	Brown / Wilson	Purchasing Team Leader	James Conner	
Medical Unit	Mark Millirons	EQTR Lead	Amy Treadwell	
Communications Unit	Howard Ure/Kelly Towe	Cost Unit	Eillene Crouse	
RCDM	Croker/Wilson/Hayman	Comp/Claims	Miguel Martinez	
		Prepared by (Resource Unit Leaders) Thomas Barrett/Jamie Powell (T)		

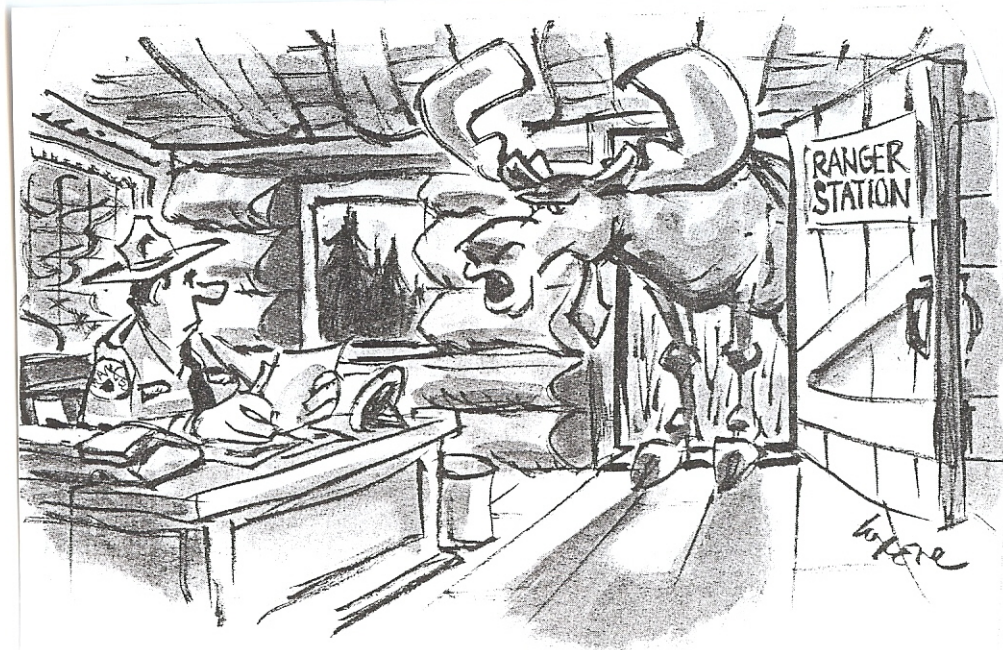
Human Resource Message

"Harassment Free Zone"

Harassment - in any form - can result in poor team performance. Everyone has a right to work in a harassment-free environment. A harassment-free environment is one where individuals treat one another with *courtesy, dignity and respect*.

Please let me know if I can assist you in resolving any issues you may have here on the incident.

Sherri Cummings
Human Resource Specialist



"I need your help. Someone is stalking me..."

WEATHER FORECAST

FORECAST NO: 56

NAME OF FIRE: Sweat Farm

PREDICTION FOR: Day Ops

UNIT: Georgia Forestry Commission

SHIFT DATE: Thursday 06/14/07

SIGNED: Dan Byrd

TIME AND DATE

Incident Meteorologist

FORECAST ISSUED: 1900 hours 06/13/07

WEATHER DISCUSSION: Disturbances rotating through an upper level trough should combine with daytim Heating and a relatively moist airmass to produce scattered showers and thunderstorms today and again on Friday. In addition, afternoon seabreezes should help focus shower and thunderstorm chances through Friday. However, the trough will lift out of the area to end the week, with an upper level ridge building back in for the weekend. This should result in hotter, drier weather, with minimal chances for precipitation for Sunday and Monday...but a slight increase in chances for afternoon thunderstorms on Tuesday.

WEATHER FORECAST DAY SHIFT THURSDAY: (See table for specific incident forecasts)

WEATHER: Partly Cloudy. Scattered afternoon showers and thunderstorms. Chance of measurable rain 30%.

MAX TEMPERATURES: 84-88 (24 hour trend: Steady)

MIN HUMIDITY: 38 to 43% (24 hour trend: Steady)

20 FT WINDS: Northeast winds 3-8 through 1000, then East 5-10 mph, with gusts up to 15 mph. Becoming East-southeast 5 to 10 mph, with gusts up to 20 mph around 1600.

STABILITY/INVERSION: Mixing heights near 6600 ft. Afternoon Dispersion index 40. Haines Index 4 (Low). Transport winds E 9-13. Nocturnal inversion lifting and dissipating around 0900.

LAL: 3

	Sweat Farm Rd.	Bugaboo Scrub II	Roundabout
<i>Max Temperature:</i>	85-88°	84-87°	85-88°
<i>Min Humidity:</i>	38-43%	42-45%	36-41%
<i>Seabreeze Passage:</i>	1630	1600	1700

WEATHER FORECAST FOR THURSDAY NIGHT:

WEATHER: Variable cloudiness with isolated showers and thunderstorms, mainly early. Chance of measurable rain 20%.

MIN TEMPERATURES: 65-68

MAX HUMIDITY: 95-100%

20 FT WINDS: East 2 to 4 mph.

STABILITY/INVERSION: A nocturnal low level inversion is expected around 500 feet, with localized visibilities of a mile or less in fog/smoke after 0100. Smoke drift W. Dispersion 1.

OUTLOOK FOR FRIDAY:

Partly to mostly cloudy. A 30 percent chance for mainly afternoon showers and thunderstorms. Highs 85-88. E winds 3 to 5 mph, becoming Southeast 5 to 10 mph, with gusts up to 15 mph. Min RH 37 to 42%. Mixing Height 6500 feet, dispersion index 45, transport winds SE 5 7-10 mph.

FIRE BEHAVIOR **June 14, 2007**

Vicky Edge, FBAN

****TODAY'S FIRE BEHAVIOR WILL BE LOW****

Fire behavior will remain low as fuels are reflecting moisture received from the past rains. All divisions are showing no major hot spots. New starts today will be slow to start and spread. Direct attack with Dozer/Tractor Plows will be effective today and with production constraints. Engines will be able to support accessible areas.

NE 3- 8 mph through 1000, increasing with gusts E to 15mph. When Sea-breeze passes @1630 winds will become more E – SE gusty to 20mph.

RH – 38% to 43% / Temp - 85 to 88

Rates of Spread – Fuel Model 4 (heavy shrub) ROS - 10 – 20 ft/min / Flame lengths – 4’ to 8’

Fuel Model 7 (Southern Rough) ROS - 10 to 15 ft/min / Flame lengths – 4’ to 5’

Probability of Ignition: 20% / KBDI: 403

Mixing heights today will push 6500’

SAFTEY: Communicate to adjoining forces and Operations, pockets of dry fuels that did not receive rain. These areas could burn more readily and with moderate activity.

☐ SAFETY MESSAGE

Incident:
Sweat Farm Road

Date:
June 14, 2007

Time:
Day

Major Hazards and Risks:

- Driving
- Weather
- Mop Up hazards
- Insects/Animals
- Communications

Scan the road ahead to spot hazards. Watch out for ATVs, heavy equipment and foot traffic in or near your path of travel. Get out of the vehicle and look prior to backing or use a spotter if someone is available.

With these temperatures continue to drink plenty of water to stay hydrated. **Monitor Command Channel for Weather Alerts.** Be sure the message is past on to all resources assigned. Cover lightning safety during tailgate briefing prior to starting work.

Look up, Down and Around for snags, reburns, stump holes, hot pockets and other hazards. Be sure to **communicate** these hazards with all. Mitigate the ones you can and report the ones you can't to your Safety Officer.

If it lives here, it Bites! Snakes, ticks, alligators, bears, sand gnats and other critters are on the move so watch where you walk and check yourself for ticks daily. **Do Not play with the wildlife!**

Be sure to check in and out with DIVS for accountability. **Check your handhelds** to ensure proper cloning. Communicate needs timely and accurately. If **you are not sure about something, ASK!!!**

Hazard Tree Safety

Environmental conditions that increase snag hazards:

- Strong winds
- Night operations
- Steep slopes
- Diseased or bug-kill areas

Hazard tree indicators:

- Trees have been burning for an extended period
- High risk tree species (rot and shallow root system)
- Numerous down trees
- Dead or broken tops and limbs overhead
- Accumulation of down limbs
- Absence of needles, bark or limbs
- Leaning or hung-up trees

Ensure instructions given are CLEAR...



Safety Officers: Mark Munns, John Godwin, Julian Beasley, Tommy Hawkins, Shelby Charlie, Jerry Domgrouske, Robert Grossard, Don Ranne, Phil Spor, Pete Stewart, Charles Wood.

INCIDENT ACTION PLAN SAFETY ANALYSIS										1. Incident Name Sweat Farm & Roundabout Fires		2. Date 6/14/2007		3. Time Day Shift				
LCES* Analysis of Tactical Applications Lookouts Communications Escape routes Safety zones										Other Risk Analysis								
Branch	Indirect Fireline	Burn out Operations	Power lines	Road Conditions	Frontal Assault	Anchor Points	Extreme Conditions	Reburn Potential	Snags	Insects, snakes	LCES Mitigations	Smoke	Traffic & Railroad	Communications	Structure Protection	Fatigue/Hydration	Multi-aircraft	Other Risk Mitigations
Sweat Farm	1, 3, 4, 5, 7, 8, 10	1, 3, 4, 5, 6, 8, 10, 13, 37	15	12, 20, 29	1, 3, 4, 5, 7, 8, 24, 29	8	1, 6, 7, 8, 10	1, 3, 5, 7	6	2	1. Establish & maintain LCES. Report LCES checks twice daily to DIVS on line & staggings.	1, 3, 4, 23, 27, 32, 33	20, 26, 28, 31, 33	1, 3, 10, 14	3, 5, 11, 19, 23, 25, 26, 27	18, 21	29, 30	18. Take plenty rest breaks and encourage to drink water NOW through briefings.
											2. Look UP, DOWN and AROUND - Use protective spray with deet on skin (Not on Nomex), permethrin can be used on nomex clothing. Do Not try to catch or kill snakes!							19. Watch out for complacency and fatigue. 8. Utilize Fire Departments for structure protection. Tailgate briefings on WUI hazards.
											3. Post experienced Lookouts. Make sure LCES is in place and make known.							20. Defensive driving will be addressed in all briefings.
											4. Use Air Attack as Lookout.							21. All personnel must meet the 2:1 work/rest ratio. Line supervisors and Safety will monitor closely.
										5. Flag escape routes on right side of escape route facing outward. Create new escape routes as you progress. Maintain LCES at all times.							22. Notify EOC of need to close CSX track adjacent track to ensure safety of firefighters due to excessive smoke or fire activity.	
										6. Post lookout for Snags, Runs, and Spot Fires.								23. Recongnize, Communicate & Avoid Hazmat situations.
										7. FBA/Metereoroligist to develop weather watch system.								24. Line Supervisors will provide clear, concise briefings.
										.8 Ensure Fireline is Anchored.								25. Review Structural "Watch Out" situations.
										9. All Firefighters must review current weather, predicted weather & fire behavior forecast.								26. Ensure Traffic Planning is safe and enforced. Heed Defensive Driving techniques noted in Safety Messages.
										10. Keep Firefighters informed of any changes in predicted weather, consider at least a two day weather pattern when planning burnout operations.								27. Avoid trash dumps in line construction & avoid smoke from dumps
										11. Refer to IRPG, pg. 12 on Power Line Hazards.								28. Relocate staggng area when driving conditions warrant.
										12. Observe all traffic signals and speed limits.								29. Air Attack and/or lead plane will always be in the air to coordinate aircraft.
										13. Ensure any burnout operations have been clearly communicated to ALL, prior to burning.								30. Personnel on ground will stay out of drop zones.
										14. Ensure GOOD tailgate briefings with resources unable to attend Operational Briefing (Include Ops, Logs, Fin & Plans info.).								31. Use spotter when backing vehicle(s).
										15. Scout ahead of tractor operations to avoid making contact with power poles and guide wires when tying into roads. Power companies are working in some DIVS, avoid all down lines as they may become charged.								32. Use bandanna to filter smoke in heavy smoke areas.
																		33. ALL vehicles and equipment must have lights on when running. Plastic colverts under some roads have burned and are collapsing under heavy loads, DIVS will coordinate which roads transport and tractors will use. GSP (912) 287-6500 : EMA (912) 287-4499.

Prepared by (Name and Position)

ICS 215A

Mark Munns SOF2, John Godwin SOF2, Julian Beaseley SOF3, Tommy Hawkins SOF2 (t)

DIVISION ASSIGNMENT LIST				1. Branch North Branch		2. Division/Group A-B-C-D		
3. Incident Name Sweat Farm Fire				4. Operational Period Date: 6-14-07 Time: 0800 - 2000 DAY				
5. Operations Personnel								
Field Ops Planning Ops		Brantley McManus Rich Gray/Steve Gray		Division/ICT3		Shawn Pearson O-446 18*6748 6/16 Robert Stewart 6/14		
Branch Director Branch Safety		Brent McCarty Charles Wood		Division Safety		Shelby Charley 6/15 912-637-5405		
6. Resources Assigned this Period								
Strike Team/Task Force/ Resource Designator		Leader / Name		Last Shift Date	Number Persons	Trans. Needed	Drop Off PT./Time	Pick Up PT./Time
LAS ST ENG T6 O-1371		Bob Smith		6/15	1	N	0800	2000
ENG LAS Engine T6 E-1070		Davis/Tresclair		6/15	2	N	0800	2000
ENG-LAS Engine T6 E-1071		Thompson/Bankston		6/15	2	N	0800	2000
ENG-LAS Engine T6 E-1072		Turreau/Carrier		6/15	2	N	0800	2000
ENG LAS Engine T6 E-1073		Tradewell/Honeycutt		6/15	2	N	0800	2000
LAS Engine T6 E-1074		Goings/Graham		6/15	2	N	0800	2000
TFLD O-1304		Rusty Meadows		6/20	1	N	0800	2000
LAS Engine T6 E-1076		Bankston/Redmon		6/15	2	N	0800	2000
LAS Engine T6 E-2841		Chatham/Mathews		6/15	2	N	0800	2000
LAS Engine T6 E-1075		Harris/Slack		6/15	2	N	0800	2000
TXS TP T2 JD750 E-1452		Brock/Ramsey		6/20	2	N	0800	2000
TXS TP T3 JD650 E-3116		Elrod/Martin		6/21	2	N	0800	2000
TX TP T2 JD750 E-1453		McChillie / Burnett		6/15	2	N	0800	2000
WAT2Smith #2 E-180		Smith			1	N	0800	2000
7. Control Operations Hold, and improve containment lines. Continue to address hot spots, and mop up. Respond to reburns as necessary, and evaluate ETR needs. Coordinate movement of resources with other divisions as needed								
8. Special Instructions								
9. Division/Group Communication Summary								
Function	Frequency	System	Channel	Function	Frequency	System	Channel	
Command	158.7825/162.2 Rx 153.7625/162.2 Tx Narrow Band	King NIFC	Group 11 1	Air to Ground Federal	167.950	King NIFC	Group 11 Ch. 12	
					167.950/110.9 narrow band			
Tactical Div/Group	168.200 Rx & Tx Narrow Band	King NIFC	Group 11 11	Air to Ground Georgia	159.390 Rx & Tx	King NIFC	Group 11 Ch. 13	
Prepared by (Resource Unit Leader) Thomas Barrett / Jamie Powell (T)		Approved by (Planning Section Chief) /s/Vicki Edge			Date June 13, 2007		Time 1900	

DIVISION ASSIGNMENT LIST				1. Branch North Branch		Division/Group J	
3. Incident Name Sweat Farm Fire				4. Operational Period Date: 6/14/07		Time: 0800-2000 Day	
5. Operations Personnel							
Field Ops Operations Chief		Brantley McManus Rich Gray/Steve Gray		Division Supervisor		Steve Abbott 6/19 912-218-2713 18*3213	
Branch Director Branch Safety		Brent McCarty Charles Wood		Division Safety Officer		Robert "Boyd" Gossard 6/16 912-218-2954	
6. Resources Assigned this Period							
Strike Team/Task Force/ Resource Designator		Leader / Name		Last Shift Date	Number Persons	Trans. Needed	Drop Off PT./Time Pick Up PT./Time
ST Tractor Plow T3		Rodney Heard		6/23	1	N	0800 2000
GAS TP T3	E-3099	Smith	6/23	1	N	0800	2000
GAS TP T3	E-3101	Cross	6/23	1	N	0800	2000
GAS TP T3	E-3102	Reynold	6/23	1	N	0800	2000
ENG OK ANA	E-321	Stands/Gooday/Solis	6/16	3	N	0800	2000
ENG OK ANA	E-320	Chitbbty/Tosee/Tosee	6/16	3	N	0800	2000
Smith #3 WAT2	E-179	David Webb		1	N	0800	2000
DINS	O-1574	John Colberg	6/24	1	N	0800	2000
DINS	O-1581	Mark McClure	6/24	1	N	0800	2000
7. Control Operations ; Hold, and improve containment lines. Continue to address hot spots, and mop up. Respond to reburns as necessary, and evaluate ETR needs. Coordinate movement of resources with other divisions as needed							
8. Special Instructions ;							
9. Division/Group Communication Summary							
Function	Frequency	System	Channel	Function	Frequency	System	Channel
Command	158.7825/162.2 Rx 153.7625/162.2 Tx Narrow Band	King NIFC	Group 11 1	Air to Ground Federal	167.950 167.950/110.9 Narrow band	King NIFC	Group 11 Ch. 12
Tactical Div/Group	169.900 Rx & Tx Narrow Band	King NIFC	Group 11 10	Air to Ground Georgia IA	159.390	King NIFC	Group 11 Ch. 13
Prepared by (Resource Unit Leader) Thomas Barrett / Jamie Leigh-Powell (t)		Approved by (Planning Section Chief) /s/ Vicky Edge		Date June 13, 2007		Time 2000	

DIVISION ASSIGNMENT LIST				1. Branch North Branch		2. Division/Group K		
3. Incident Name Sweat Farm Fire				4. Operational Period Date: 6/14/07		Time: 0800-2000 Day		
5. Operations Personnel								
Field Ops Operations Chief		Brantley McManus Rich Gray/Steve Gray		Division/ICT3		Larry Bennett 6/19		
Branch Director Branch Safety		Brent McCarty Charles Wood		Division Safety Officer		Robert "Boyd" Gossard 6/16 912-218-2954		
6. Resources Assigned this Period								
Strike Team/Task Force/ Resource Designator		Leader / Name		Last Shift Date	Number Persons	Trans. Needed	Drop Off PT./Time	Pick Up PT./Time
ALS TP T2 E-1398		King/Thompson		6-15	2	N	0800	2000
GAS ENG6 E-1016		Stevens/Robinson		6-27	2	N	0800	2000
Peach 86 ENG6 E-3145		Durden / Logan		6/17	2	N	0800	2000
7. Control Operations Hold, and improve containment lines. Continue to address hot spots, and mop up. Respond to reburns as necessary, and evaluate ETR needs. Coordinate movement of resources with other divisions as needed								
8. Special Instructions								
9. Division/Group Communication Summary								
Function	Frequency	System	Channel	Function	Frequency	System	Channel	
Command	158.7825/162.2 Rx 153.7625/162.2 Tx Narrow Band	King NIFC	Group 11 1	Air to Ground Federal	167.950 167.950/110.9 Narrow band	King NIFC	Group 11 Ch. 12	
Tactical Div/Group	169.900 Rx & Tx Narrow Band	King NIFC	Group 11 10	Air to Ground Georgia IA	159.390	King NIFC	Group 11 Ch. 13	
Prepared by (Resource Unit Leader) Thomas Barrett / Jamie Powell (T)		Approved by (Planning Section Chief) /s/Vicky Edge			Date June 13, 2007		Time 1900	

DIVISION ASSIGNMENT LIST				1. Branch North Branch		2. Division/Group Z									
3. Incident Name Sweat Farm Fire				4. Operational Period Date: 6/14/07		Time: 0800-2000 Day									
5. Operations Personnel															
Field Ops Planning Ops		Brantley McManus Rich Gray/Steve Gray		Group		David Colton 6/19									
Branch Director Branch Safety		Brent McCarty Charles Wood		Division Safety Officer		Julian Beasley (T) 6/19									
6. Resources Assigned this Period															
Strike Team/Task Force/ Resource Designator		Leader / Name		Last Shift Date	Number Persons	Trans. Needed	Drop Off PT./Time	Pick Up PT./Time							
TFLD		Karl Byrd		6-15	1	N	0800	2000							
GAS ENG6 E-1015		Sapp/Brundage		6/23	2	N	0800	2000							
ALS TP E-1399		Colburn		6-15	1	N	0800	2000							
TFS ENG3 E-3091		Shane Crimm		6/24	4	N	0800	2000							
GAS ENG6 E-3147		Josey/Williams		6/27	2	N	0800	2000							
7. Control Operations Hold, and improve containment lines. Continue to address hot spots, and mop up. Respond to reurns as necessary, and evaluate ETR needs. Coordinate movement of resources with other divisions as needed Be prepared to support South Branch as needed.															
8. Special Instructions															
9. Division/Group Communication Summary															
Function		Frequency		System		Channel		Function		Frequency		System		Channel	
Command		158.7825/162.2 Rx 153.7625/162.2 Tx Narrow Band		King NIFC		Group 11 1		Air to Ground Federal		167.950 167.950/110.9 Narrowband		King NIFC		Group 11 Ch. 12	
Tactical Div/Group		168.600 Rx & Tx Narrow Band		King NIFC		Group 11 7		Air to Ground Georgia IA		159.390		King NIFC		Group 11 Ch. 13	
Prepared by (Resource Unit Leader) Thomas Barrett / Jamie Powell (T)				Approved by (Planning Section Chief) S/ Vicky Edge				Date June 13, 2007				Time 1900			

DIVISION ASSIGNMENT LIST				1. Branch South		2. Division/Group WB, WD, WO			
3. Incident Name Sweat Farm Fire				4. Operational Period Date: 6-14-07 Time: 0800 - 2000 DAY					
5. Operations Personnel									
Field Ops Planning Ops		Brantley McManus Rich Gray/Steve Gray		Division/ICT3		Jerome Harvey 18*1608		6/19	
Branch Director Branch Safety		Levy Rentz Phil Spor		Division Safety Office		Tommy Hawkins		6/19 979-218-9909 18*11907	
6. Resources Assigned this Period									
Strike Team/Task Force/ Resource Designator			Leader / Name		Last Shift Date	Number Persons	Trans. Needed	Drop Off PT./Time	Pick Up PT./Time
TFLD O-1508			Mike Lee		6-19	1	N	0800	2000
ENG6 AR OUF E-322			Rose/McFarland		6/16	2	N	0800	2000
ENG6 AR OUF E-323			Ballard/Watkins		6/16	2	N	0800	2000
Trackhoe E-2925			Stevens			1	N	0800	2000
WAT2 Biellings E-3048						1	N	0800	2000
7. Control Objectives Hold, and improve containment lines. Continue to address hot spots, and mop up. Respond to reburns as necessary, and evaluate ETR needs. Coordinate movement of resources with other divisions as needed									
8. Special Instructions									
Division/Group Communication Summary									
Function	Frequency	System	Channel	Function	Frequency	System	Channel		
Command	158.7825/162.2 Rx	King NIFC	Group 11 1	Air to Ground Federal	167.950 167.950/110.9 Narrow band	King NIFC	Group 11 Ch.12		
	153.7625/162.2 Tx Narrow Band								
Tactical Div/Group	168.755 Rx & Tx Narrow Band	King NIFC	Group 11 7	Air to Ground Georgia IA	159.390	King NIFC	Group 11 Ch. 13		
Prepared by (Resource Unit Leader) Thomas Barrett / Jamie Powell (T)			Approved by (Planning Section Chief) /s/Vicky Edge			Date June 13, 2007		Time 1900	

DIVISION ASSIGNMENT LIST			1. Branch South Branch		2. Division/Group I,WW,WX,WP			
3. Incident Name Sweat Farm Fire			4. Operational Period Date: 6-14-07 Time: 0800 – 2000 Day					
5. Operations Personnel								
Field Ops Operations Chief		Brantley McManus Rich Gray/Steve Gray		Division		Reed Callis 6/16		
Branch Director Branch Safety		Levy Rentz Phil Spor		Safety Officer		Don Ranne 6/14		
6. Resources Assigned this Period								
Strike Team/Task Force/ Resource Designator		Leader / Name		Last Shift Date	Number Persons	Trans. Needed	Drop Off PT./Time	Pick Up PT./Time
TFLD O-1450		Jeff Durant		6/15	1	N	0800	2000
TXS TP T4 E-113		Teel/Upchurch		6/15	2	N	0800	2000
ENG- WY-CPS T6 E-101		Young/Murr/Pepple		6/19	3	N	0800	2000
Motor Grader E-1314		Hendly			1	N	0800	2000
STLD O-1386		Henry Childress		6/15	1	N	0800	2000
LAS TP T2 E-1102		Eaves/Carpenter		6/15	2	N	0800	2000
CIF ENG T6 E-350		Parry / Klein / Wolf		6/17	3	N	0800	2000
GWF ENG T6 E-327		Runyon / Gerber		6/17	2	N	0800	2000
WAT2Smith #1 E-119		Webb			1	N	0800	2000
GFC ST TP T3 O-1447		Mark Sparrow		6/17	1	N	0800	2000
GAS TP T3 E-2848		Simmons		6/17	2	N	0800	2000
GAS TP T3 E-2850		Wagner		6/17	2	N	0800	2000
TFLD O-447		Mathew Martens		6/14	1	N	0800	2000
LA T/P T2 E-1103		Stokes/Marcantel		6/15	2	N	0800	2000
BIA ENG T6 E-354		Fletcher/Crosnoe		6/17	2	N	0800	2000
ENG CO PSF E-344		Price/Mobley		6/16	2	N	0800	2000
DINS		Dennis Martin		6/27	1	N	0800	2000
DINS		David Streetman		6/26	1	N	0800	2000
7. Control Operations								
Hold, and improve containment lines. Continue to address hot spots, and mop up. Respond to returns as necessary, and evaluate ETR needs.								
Coordinate movement of resources with other divisions as needed								
8. Special instructions								
9. Division/Group Communication Summary								
Function	Frequency	System	Channel	Function	Frequency	System	Channel	
Command	158.7825/162.2 Rx 153.7625/162.2 Tx Narrow Band	King NIFC	Group 11 1	Air to Ground Federal	167.950 167.950/110.9 Narrow band	King NIFC	Group 11 Ch. 12	
Tactical Div/Group	168.22 Rx & Tx Narrow Band	King NIFC	Group 11 11	Air to Ground Georgia IA	159.390	King NIFC	Group 11 Ch. 13	
Prepared by (Resource Unit Leader) Thomas Barrett / Jamie Powell (T)		Approved by (Planning Section Chief) /s/Vicky Edge		Date June 13, 2007		Time 1900		

DIVISION ASSIGNMENT LIST				1. Branch South Branch		2. Division/Group WA,WQ,WR, H				
3. Incident Name Sweat Farm Fire				4. Operational Period		Date: 6/14/07		Time: 0800-2000		
Day										
5. Operations Personnel										
Field Ops Planning Ops		Brantley McManus Rich Gray/Steve Gray			Division Supervisor		Shawn Alexander			6/20
Branch Director Branch Safety		Levy Rentz Phil Spor			Division Safety Officer		Phil Spor			6/13
							912-218-9355		18*12622	
6. Resources Assigned this Period										
Strike Team/Task Force/ Resource Designator		Leader / Name		Last Shift Date	Number Persons	Trans. Needed	Drop Off PT./Time		Pick Up PT./Time	
TFLD		John Fugitt		6/18	1	N	0800		2000	
TXS TP T4	E-114	Buckner/Easley		6/19	2	N	0800		2000	
GAS ENG6	E-3105	Brantley/Blackburn		6/23	2	N	0800		2000	
TXS ENG T6	E-1181	Cable/Haney		6/17	2	N	0800		2000	
TXS TP T4	E-112	Upton/Kuhnert		6/15	2	N	0800		2000	
TXF ENG T6	E-46	Prewitt/Chavers/Wichman		6-17	3	N	0800		2000	
Timberline WAT1 #1	E-117	Goodman			1	N	0800		2000	
DINS	O-1580	Bo Chesser		6/24	1	N	0800		2000	
DINS	O-1585	Chad Pritchett		6/26	1	N	0800		2000	
7. control operations: <p>Hold, and improve containment lines. Continue to address hot spots, and mop up. Respond to returns as necessary, and evaluate ETR needs.</p> <p>Coordinate movement of resources with other divisions as needed</p>										
8. Special Instructions										
9. Division/Group Communication Summary										
Function	Frequency	System	Channel	Function	Frequency	System	Channel			
Command	158.7825/162.2 Rx 153.7625/162.2 Tx Narrow Band	King NIFC	Group 11 1	Air to Ground Federal	167.950 167.950/110.9 Narrow band	King NIFC	Group 11 Ch. 12			
Tactical Div/Group	168.050 Rx & Tx Narrow Band	King NIFC	Group 11 6	Air to Ground Georgia IA	159.390	King NIFC	Group 11 Ch. 13			
Prepared by (Resource Unit Leader) Thomas Barrett / Jamie Powell (T)			Approved by (Planning Section Chief) S/ Vicky Edge			Date June 13, 2007		Time 1900		

DIVISION ASSIGNMENT LIST				1. Branch South		2. Division/Group Fargo		
3. Incident Name Sweat Farm Rd. Fire				4. Operational Period Date: 6/14/07		Time: 0800-2000 Day		
5. Operations Personnel								
Field Ops Planning Ops		Brantley McManus Rich Gray/Steve Gray		Division/ICT3		Eric Harris		
Branch Director				Branch Safety Officer				
				Division Safety Officer				
6. Resources Assigned this Period								
Strike Team/Task Force/ Resource Designator		Leader / Name		Last Shift Date	Number Persons	Trans. Needed	Drop Off PT./Time	Pick Up PT./Time
DOZB		Foster Smith			1	N	0800	2000
DOZ Timberline E-184		Tiner, Henry			1	N	0800	2000
DOZ 1 Timberline (KG) E-1084		Lashley, Kenneth			1	N	0800	2000
DOZB		Greg Henry			1	N	0800	2000
DOZ Lee 1 E-1085		Wayar, Harold			1	N	0800	2000
DOZ 1 Lee E-1193		Sermans, Jason			1	N	0800	2000
Excavator E-1293		Davis			1	N	0800	2000
Contractor ST		Hughes			1	N	0800	2000
Hughes TPL6 E-551					1	N	0800	2000
Hughes TPL6 E-552					1	N	0800	2000
Hughes TPL6 Disk E-553					1	N	0800	2000
Hughes Excavator E-559					1	N	0800	2000
Hughes WT E-558					1	N	0800	2000
Hughes Tank Truck E-559					1	N	0800	2000
Hughes Mech Truck E-560					1	N	0800	2000
7. Control Operations Monitor, patrol, and Mop Up. Coordinate movement of resources with other divisions as needed								
8. Special Instructions								
9. Division/Group Communication Summary								
Function	Frequency	System	Channel	Function	Frequency	System	Channel	
Command	159.120/ 107.2 Rx 151.370/123.0 Tx	King NIFC	Group 12 1	Air to Ground Federal	167.950 167.950/110.9 Narrow band	King NIFC	Group 12 Ch. 12	
Tactical Div/Group	159.285 Rx & Tx	King NIFC	Group 12 5	Air to Ground Georgia IA	159.390	King NIFC	Group 12 Ch. 13	
Prepared by (Resource Unit Leader) Thomas Barrett / Jamie Leigh-Powell (T)		Approved by (Planning Section Chief) /s/ Vicky Edge			Date June 13, 2007		Time 1900	

		1. Branch		2. Division/Group Law Enforcement / Arson Group			
3. Incident Name Sweat Farm Fire		4. Operational Period Date: 6-14-07 Time: 0800 - 2000 Day					
5. Operations Personnel							
Operations Chief		LE TEAM Leader		Mike Heath FLETC 18*11266			
Branch Director		Safety Officer					
6. Resources Assigned this Period							
Strike Team/Task Force/ Resource Designator	Leader / Name	Last Shift Date	Number Persons	Trans. Needed	Drop Off PT./Time	Pick Up PT./Time	
LA DOF	Jim Hilton	6/13	1	N	0700	2000	
LA DOF	Charlie Greer	6/13	1	N	0700	2000	
VA DOF	Brad Whittington	6/17	1	N	0700	2000	
USDA /FS	Jill Forth	6/16	1	N	0700	2000	
GFM	Brian Clavier		1	N	0700	2000	
SC DOF	Russell Mixon		1	N	0700	2000	
VA DOF	Roger Moyer		1	N	0700	2000	
SC DOF	Harold Lowrimore		1	N	0700	2000	
VA DOF	Donnie Davis		1	N	0700	2000	
VA DOF	Mike Womack		1	N	0700	2000	
PA DOF	Terry Smith		1	N	0700	2000	
PA DOF	Shawn Turner		1	N	0700	2000	
7. Control Operations Immediately report suspicious activity through the Incident Operations Branch Director.							
8. Special Instructions							
9. Division/Group Communication Summary							
Command		King NIFC		Logistics		King NIFC Channel	
Tactical Div/Group		King NIFC		Air to Ground		King NIFC	
Prepared by (Resource Unit Leader) Thomas Barrett / Jamie Powell (T)		Approved by (Planning Section Chief) Vicky Edge		Date June 13, 2007		Time 1900	

AIR OPERATIONS SUMMARY		PREPARED BY: George Martin	PREPARED DATE/TIME 6/13/07 1900			
1. INCIDENT NAME: Sweat Farm Road		2. OPERATIONAL PERIOD: Day Shift 6/14/07	START TIME: 0700	END TIME: 1900	SUNRISE: 0625 SUNSET: 2035	
3. REMARKS (Safety Notes, Hazards, Air Operations Special Equipment, etc.): Waycross Helibase—31 14.95 X 82 23.73 Pogo Helibase-30 44.25 X 82 07.69 Braganza Helispot 31 07.23 X 82 15.23 AIR TANKER REQUESTS THRU POGO Waycross Dispatch Advise Waycross Helibase of ACFT Dispatch near Georgia Bay Complex TFR <ul style="list-style-type: none"> Avoid take-off / landing over ICP All dispatches will come through the ICP in Waycross for state aviation resources. High Towers in Area, LOOK UP, LOOK DOWN, LOOK ALL AROUND PERSONNEL STAY CLEAR OF ACTIVE DIPSITES Aircraft Dispatching Priorities: <ul style="list-style-type: none"> 1. Life 2. Structures Threatened 3. Initial Attack 4. Fire threatening perimeter control lines 			4. MEDEVAC A/C: Trauma 1 @ Jacksonville 26min: 1-800-223-4878		5. TFR: In Place Radius: Rectangle to 3000 MSL_ Altitude: 3000= MSL NW corner Lat 31 09 00 Long 82 39 00 NE corner Lat 31 09 00 Long 82 02 30 SW corner Lat 30 36 00 Long 82 39 00 SE corner Lat 30 27 00 Long 82 02 30	
6. PERSONNEL	Phone	7. FREQUENCIES	AM	FM	8. FIXED-WING	# Avail / Type/ Make-Model / FAA N# / Base(s)
AOBD: George Martin	Prim. 912-218-8182 Secon. 770-654-7904 ICP FAX: 912-285-6014	AIR/AIR FW: A/A Discretionary: IA/Breakouts	123.125 prim. 125.225 scdy. 122.925 GA IA 125.225		Air Tankers @ LCQ & OCF Lead planes	T-20 / LCQ / P3 (Day Off <u>Sun</u>) T-43 / LCQ / P2V(Day Off <u>Mon</u>) T-10/LCQ / P2V (Day Off <u>Thurs</u>) LP/14 @ LCQ
ATGS B. Wicks-----Waycross-90K	530-906-2224	AIR/AIR RW: A/A A/A Discretionary: IA/Breakouts	123.125 prim. 125.225 scdy. 122.925 GA IA 125.225			
State Aviation Lead Waycross Airport Mike Leverette	478-951-2835	AIR/GROUND:		159.390 GA IA 167.950 Swt. Farm		
ASGS: Johnny Stephens	360-463-0988	AIR/GROUND	Big Turnaround	170.000		
Waycross HEBM: Melvin Tate	850-768-0008					
Waycross HB & Braganza HS:		DECK FREQ:		163.100		
Braganza Helispot HESM: Dip Site Mgr:		TOLC FREQ: (Braganza Helispot)		Rx: 151.145 Tx: 151.145		
Pogo Helibase Davis Helibase Waycross Helibase GA Forestry Hangar Waycross District Dispatch	912-496-4415 912-496-3765 912-218-8937 912-338-5982 912-287-4915	FLT FOLLOWING: On Prim. or Secon. Air to Air.				Other -Air Attack flight follow with Waycross on the Sweat Farm - Flight follow with Pogo on the Big Turnaround. -IA Air Attack for State--- Cessna 182's and GA NG HEAVIES Bell 407-Chopper 7 -Approved Helispots—Refer to Okfenokee NWR Dip Site Map - ALL AIRCRAFT Call Air Attack when entering TFR---- Waycross Helibase will call Pogo as a back up!!! -ALL FLIGHTS WILL BE CLEARED WITH AOBD

Fargo Helibase—(Golf Course)
 N 30 41 27.3 x W 82 34 02.0
Stephen Foster SP (Pocket)
 N 30 47 32.2 x W 82 22 39..6

9. HELICOPTERS (Use Additional Sheets As Necessary)

BIG TURNAROUND AVIATION RESOURCES

SWEAT FARM ROAD AVIATION RESOURCES

FAA N#	TY	MAKE/MODEL	BASE	AVAIL	START	REMARKS	FAA N#	TYPE	MAKE/MODEL	BASE	AVAIL	START	REMARKS
N5BH	1	Sikorsky S-70A-27	Pogo	0900	0930	Bucket drops	90K	1	Baron	Waycross	0900	0930	ATGS
6MW	1	K-MAX	Pogo	0900	0930	Bucket drops	N5843	3	Bell 206-L3	Waycross	0900	0930	Recon/ Admin/ IA
6AZ HT-766	1	S-61	Waycross	0900	0930	Bucket drops	71K (GA)	NA	Cessna 185	Waycross	0900	0930	IA, Aerial Det.
901CH	2	S-58-T	Pogo	0900	0930	Bucket drops	11H (GA)	NA	Cessna 182	Waycross	0900	0930	IA, Aerial Det.
OKE 6 (N5738Y)	3	Bell 206-B3	Pogo	0900	0930	Bucket drops, recon, admin							
02K	1	Baron	Waycross	0900	0930	ATGS							

10. TASK/MISSION/ASSIGNMENT (Type/Function includes: Air Tactical, Retardant, Recon, Personnel Transport, Water Dropping, S&R, etc.)

TYPE/FUNCTION	NAME OF PERSONNEL OR CARGO (if applicable) OR INSTRUCTIONS FOR TACTICAL AIRCRAFT	MISSION START	FLY FROM	FLY TO
Type I Helicopter	Operation and Logistic Support	0930	Helibase	Fire and Return
Type II Helicopter	Operation and Logistic Support	0930	Helibase	Fire and Return
Type III Helicopter	Operation and Logistic Support	0930	Helibase	Fire and Return
ATGS Platforms	Aerial Supervision of all Aircraft over Incidents	0930	Waycross Airport	Fire and Return
State Detection Fixed Wing	Aerial Detection and IA for New Fire Starts	0930	Waycross Airport	Fire and Return

Georgia Bay Complex – Sweat Farm (Group 11)

INCIDENT RADIO COMMUNICATIONS PLAN		1. Incident Name Sweat Farm Road Fire		2. Date/Time Prepared 6/13/2007		3. Operational Period Date/Time 6/14/2007 0700-2100	
4. BASIC RADIO CHANNEL UTILIZATION							
Radio Type/Cache	Channel	Function	Frequency/Tone	Assignment	Remarks		
King NIFC	1	Command Ware EMA Repeater	158.7825/162.2 Rx 153.7625/162.2 Tx Narrow Band	Command Rpt	Sweat Farm		
King NIFC	2	Fire Tower Repeater	159.225 /203.5 Rx 151.280/203.5 Tx	Tactical Rpt	South of Homerville		
King NIFC	3	GA Mutual Aid	154.280 Rx & Tx	Structural & Tactical	Mop Up Group		
King NIFC	4	Foster Repeater.	159.240/ 203.5 Rx 151.400/203.5 Tx	All Divisions	Monitored in Fargo		
King NIFC	5	Tactical	159.285 Rx & Tx	Fargo Group	COMPACT-TAC		
King NIFC	6	Tactical	168.050 Rx & Tx Narrow Band	Divisions WA – WQ – WR - H	Fireline		
King NIFC	7	Tactical	168.600 Rx & Tx Narrow Band	Divisions Z	Fireline		
King NIFC	8	Tactical	164.1375 Rx & Tx Narrow Band	Divisions WK, WL, WM	Fireline		
King NIFC	9	Tactical	168.775 Rx & Tx Narrow Band	WB-WD-WO	Fireline		
King NIFC	10	Tactical	169.900 Rx & Tx Narrow Band	Divisions J, K, Contingency Group	Fireline		
King NIFC	11	Tactical	168.200 Rx & Tx Narrow Band	Divisions A-B-C-D, I-WW-WX-WP	Fireline		
King NIFC	12	Air to Ground	167.950 Rx 167.950/110.9 Tx Narrow Band	Sweat Farm			
King NIFC	13	Air To Ground	159.390 Rx & Tx	Georgia-I/A			
King NIFC	14	Air Guard	168.625 Rx 168.625/110.9 Tx Narrow Band	All Divs.	EMERGENCY CONTACT or redirect with incident aircraft		

5. Prepared By (Communications Unit) **Howard Ure / COML**
ICS 205

NFS 1330

MEDICAL PLAN	1. Incident Name Sweat Farm Rd Fire: Waycross / Fargo	2. Date Prepared 6/13/07	3. Time Prepared 1600	4. Operational Period DAY SHIFT	
5. Incident Medical Aid Station					
Medical Aid Stations	Location			Paramedics Yes No	
Herty ICP Medical 912-218-910 Mark Millirons (MEDL)	Georgia Forestry Waycross Office ICP -			EMT	
Joe Anderson (MEDL) 478 550-2988	Line-EMT Herty ICP			EMT	
Dwight Dold 254-734-5374	Line- EMT Ruskin School Staging			EMT	
After Hours Contact					
Mark Millirons (MEDL) 912- 218-9101	Comfort Inn Waycross		912-283-3300 ext. 208 706-741-4216 cell		
Joe Anderson (MEDL) 912- 218-9317	Comfort Inn Waycross		912-283-3300 ext. 208 478-550-2988 cell		
Dwight Dold (EMTB) 254 -734-5374	Comfort Inn Waycross		912-283-3300 ext. 129 254-734-5515 cell		
6. Transportation					
A. Ambulance Services					
Name	Address	Phone	Paramedics Yes No		
Clinch County EMS	Homerville, GA Sherriffs Department	912-487-3250	Yes		
Ware County EMS	Waycross Georgia (911 to activate)	912-281-9467 Linc 1*96*116	Yes		
Air Ambulance Service					
Trauma 1 (155.340)	Jacksonville, FL (26 min/air)	1-800-223-4878	Yes		
AirMed	Augusta, GA (2 hrs/air)	1-888-792-9245	Yes		
Lifeflight (155.340)	Jacksonville, FL (35 min/air)	1-877-870-7779	Yes		
B. Incident Ambulances					
Name	Location	Paramedics Yes No			
Ware County EMS	Ruskin School Staging	Yes			
7. Hospitals					
Name	Address	Travel Time Air Ground	Phone	Helipad Yes No	Burn Center Yes No
Satilla Regional	410 Darling Ave Waycross Ga N 31°13.56 W 82°21.058	15 min 30 min	912-283-3030	Yes	No
Clinch Memorial Hospital	1050 Valdosta HWY Hommerville, GA	45 min	912-487-5211 ext 4502		No
South Georgia Medical Center	2501 N. Patterson St. Valdosta, GA 31602	60 min	229-333-1000	Yes	
Memorial Hospital	Savannah, GA 4700 Waters 3200.7 8107.6	40 min	912-350-8999	Yes	No
Shands Hospital (level I)	Jacksonville, FL N 30°20 97 W 82° 13 992	45 min 1.5 hrs	800-223-4878	Yes	Yes
Shands Burn Center	Gainesville, FL 38.33 N 082 20.73W	45 min	352-265-0300	Yes	Yes
Doctor's Hospital Joseph Still Burn Center	August,GA (Chief Burn Ctr 3328.943 8205.422	90 min 3 ½ hrs	877-863-9595 706-863-9595	Yes	Yes
8. Medical Emergency Procedures					
<p>Identify any EMTs and Paramedics in your crews. All medical emergencies will be reported to the Division Supervisor who will assume command and notify Line Medics.</p> <ol style="list-style-type: none"> Handle all injuries/ illnesses according to the 2006 IRPG page 37. Division Sup will assume command and ensure EMS is notified. Com will notify ambulance and coordinate with IC, SOF, MEDL <p>Helispots – Braganza Sweat Farm ICP: 31 07.23 X 82 15.23 Helispots – Fargo Base Camp: H-114 (4 mi marker Hwy 177 – Stephen C. Foster St. Prk) 30 47 30.02 X 82 22 39.5 H-113 (Hwy 441 - golf course) 30 41.739 X 82 33.961</p> <p>MAJOR EMERGENCIES – Secure the area and identify witness for later investigation. Keep an accurate log of events.</p>					
Prepared by (Medical Unit Leader) Mark Millirons (MEDL)			10. Reviewed by (Safety Officer) Tommy Hawkins (T)		

DEMOBILIZATION PROCEDURES

A. HOW WILL IT HAPPEN?

1. Your supervisor declares your position excess.
2. The Section Chief agrees and notifies the Demob Unit Leader.
3. The Demob Unit Leader has a 24+ hour window to reassign you to another incident or arrange for transportation to your home unit.

B. WHAT CAN YOU DO TO EXPEDITE THE PROCESS?

1. Turn in all time report and equipment use records to **Time**.
2. If you have equipment, have an inspection completed by **Ground Support**.
3. Turn in any non-essential items you have checked out to **Supply** or **Communications**.
4. If there is any change in your status, notify **Demob** immediately.
5. Check the Demob Board on a regular basis. Be available to move within a 1 to 2 hour notice.

Sweat Farm Communication

June 13, 2007

Analog Radios that need to be turned as soon as possible

K-083-05	Jesse Jordon	Ware County Structural Protection		05/24/07
K-149-07	Billy Leitch	GFC	912-496-2411	04/28/07
K-166-13	Robbie Deal	Medical Coverage		04/30/07
K-173-08	John West	E-2733	Doz Op	05/26/07
K-173-11	Berry Chesser	O-2042	KneeKnocker	05/07/07
K-052-03	Bill Bell	O-335	TFLD	05/24/07

HOTEL ROOMS THAT WE WILL LOOSE

If you are in one of these rooms you will need to see Facilities for a new room assignment and check out the morning after the last night we have the room.

6/14 (check out 6/15)

Best Western: 112, 116, 124, 210, 215,

Hampton Inn: ALL ROOMS

6/15 (check out 6/16)

**Jameson Inn: 101, 104, 106, 107, 109, 111, 114, 115, 118, 201,
204, 211, 220, 305, 306, 308, 309, 401, 402, 409**

THANK YOU REQUEST FORM

Sweat Farm Rd & Big Turnaround Fires

Please provide some contact information for those people, groups or enterprises you wish to recognize for their efforts or contributions to the management of this incident.

I would like to recognize: _____
Name of person

With a (select one):

Standard Certificate

Letter

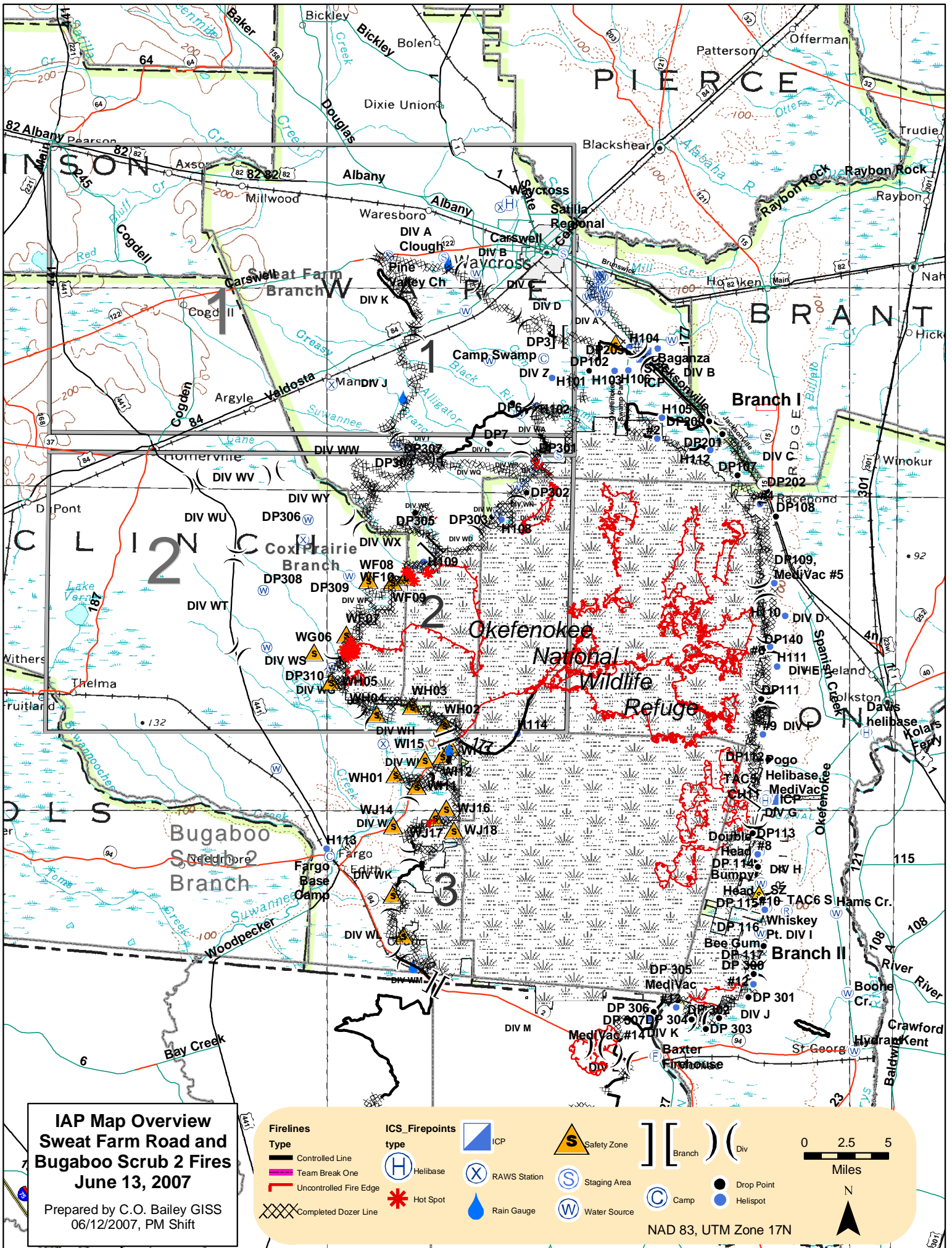
Mailing address: _____

Reason for recognition: _____

Your name and position: _____

Sweat Farm Road Phone Roster 6-14-07

NAME	POSITION	PHONE NUMBERS	LINC ID	NAME	POSITION	PHONE NUMBERS	LINC ID	
COMMAND & GENERAL STAFF				FINANCE				
Troy Floyd	IC	706-676-0168			Time	912-285-6038		
Sherrri Cummings	HRSP	912-218-9342	18*12299		Roundabout	478-550-2995		
Buck Kline	LOFR		18*1615	Grace Reid	FSC	912-285-6038		
Jenny Lynn Bruner	PIO	912-218-9319	18*11959	Paul Palmiotto	IBA	478-681-6111		
James Stone	PIO	478-550-2989		James Conner	BUYT	912-285-6112	229-938-2952 cell	
Marian Swinney	PIO	478-550-2981		Eillen Crouse	COST	912-285-6038		
Bill Spinrad	PIO	912-281-8267		Miguel Martinez	Comp/Claims	912-285-6038	760-420-8910 cell	
David Elkowitz	PIO	912-218-8182	18*6988	Vickie Kitchens	TIME	478-550-2995		
Mark Munns	SOF2	912-218-9308	18*10090	Amy Treadwell	EQTR	912-285-6038		
John Godwin	SOF2	912-218-8325	18*7145	LOGISTICS				
Tommy Hawkins	SOF	979-218-9909	18*11907		ORDERING	912-285-6068		
Charles Wood	SOF	912-218-9322	18*11974	Willie Boston	LSC	770-328-3186		
Don Ranne	SOF	541-377-1633		Susan Cornett	LSC	936-546-1952		
Roy Leach	SOF	559-719-0876		Howard Ure	COML	936-671-2698		
Robert Gossard	SOF2	912-218-2954	18*5929	Mark Millirons	MEDL	912-218-9101	18*7480	
Shelby Charley	SOF2	912-637-5405		Dwight Dold	EMT	254-734-5374		
Phillip Spor	SOF2	912-218-9355	18*12622	Scott B Roper	FDUL	912-218-9321		
Agency Reps				Jim Caldwell	FACL	478-550-2985		
Billy Leitch		912-218-9325	18*12022	Fredrick Dunets (Camp for the Blind-Night)	BCMG	912-218-9354		
Skippy Reeves		912-218-9359	18*12756	John Wall	Hotel Manager	936-546-3109		
George Constantino		912-398-7680		Jeremy Hughes	Hotel Manager	912-531-7940		
Andy Stone		912-637-5261		Mike Summers	GSUL	936-546-1957		
Joe Yeager		912-816-8732		Michelle Sanchez	GSUL	912-281-8276		
OPERATIONS				Terry Lemmon	SUPL	936-546-1953		
Brantley McManus	OSC	912-218-9313	18*10887	Denise Croker	ORDM	912-218-9511	18*11385	
Steve Gray	OSC	912-218-5414	18*11904	Daniel Wilson	RCDM	936-661-0401		
Rich Gray	OSC		18*11981	Peggy Brown	LEO	304-640-8823		
Brent McCarty	OPBD	229-938-8718	18*12585	Dennis M Evans	THSP	478-957-9709		
Levy Rentz	OPBD	229-356-0020	18*1609	Joe Anderson	MEDL Fargo	912-637-5405	18*11849	
Shawn Pearson	DIVS		18*6748	MISC.				
Reed Callis	DIVS	912-218-9352	18*12520	COMMAND DISPATCH		912-218-9044	18*6870	
Shawn Alexander	DIVS			MACON DISPATCH		912-218-9232	18*7378	
Jerome Harvey	DIVS		18*1608	MOP UP COMMAND			18*4918	
Steve Abbott	DIVS	912-218-2713	18*3213	FARGO Comm.		912-637-5270		
BIG TURNAROUND OPS SEC				OTHER INCIDENT MANAGEMENT TEAMS				
CSX RAIL ROAD OPERATIONS- Dixon				California WFU TEAM #2 Phone Roster				
AIR OPERATIONS				NAME				
George Martin	AOBD	912-218-8182		PHONE NUMBERS				
Johnny Stephens	ASGS	360-463-0988		<i>COMMAND STAFF</i>		912-496-4176		
SEE AIR OPS SUMMARY (220)				<i>PLANNING</i>		912-496-4175		
PLANNING				<i>OPERATIONS</i>		912-496-4132		
Vicky Edge	PSC	912-218-7586	18*6871	<i>AIR OPERATIONS</i>		678-274-2894		
Thomas Barrett	RESL	912-218-9009	18*6418	<i>FINANCE</i>		912-496-4102		
Steve Chapman	SITL	478-550-2468	18*12670	<i>LOGISTICS</i>		404-354-5126		
Jamie Leigh-Powell	DOCL	912-285-6046		<i>EXPANDED DISPATCH</i>		912-496-3162		
Trey Spivey / Rusty Brown	CTSP	912-285-6046		<i>COMMUNICATIONS</i>		912-496-2111		
				OTHER AGENCIES				
Charles Bailey	GISS	912-285-6046		OTHER AGENCIES		PHONE #	SOUTHERN LINK	
Harry Blount	GISS	803-397-2914		Nahunta FD Fire Chief		Button Lee	912-717-3330	1*25*323
Jon Pelton	IMET	912-218-9309	18*10247	EMA / 911 Director		Billy Lartz	912-282-8730	1*11*2001
Harold West	DMOB	912-218-7726	18*4203	GFC Waycross District Office		Jeremy Kent	912-287-4915	
Paul Dore	DMOB	912-218-9361	18*12771	Atkinson EMA IC		David Moore		Linc 1*11*4801
Buford Sanders	THSP	478-951-8238		Atkinson GEMA Coordinator		Diane May		Linc 1*11*4818
Brenda Miller	IRIN (T)	601-209-3476		Georgia State Patrol		Dispatcher	912-287-6500	
				Clinch County Sheriff			912-487-5316	
				WareCounty Sheriff			912-287-4325	
				North End Resource Advisor		Dean Easton	912-496-7366	ext 235
				South End Resource Advisor		Doug Nuss	912-286-3110	

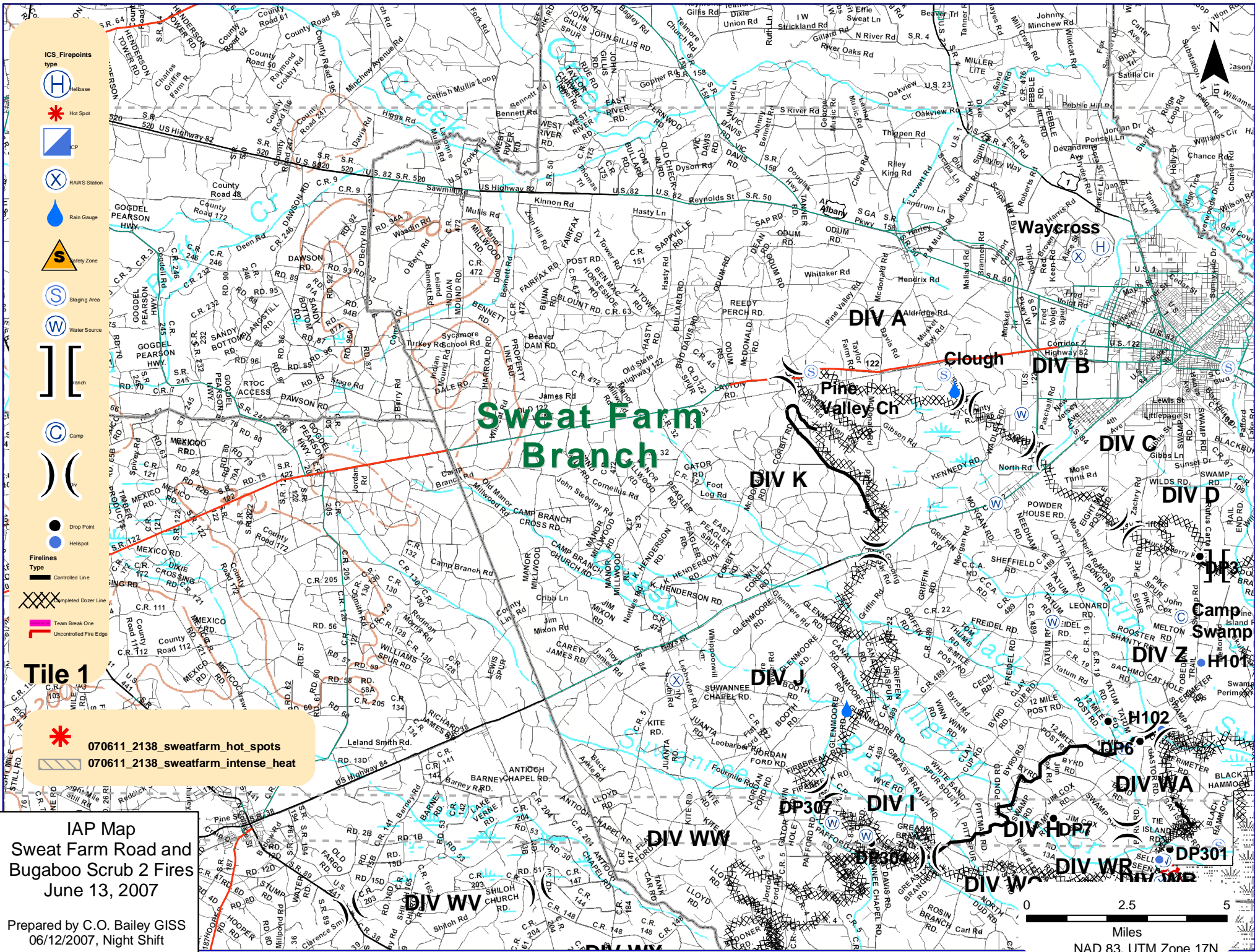


**IAP Map Overview
Sweat Farm Road and
Bugaboo Scrub 2 Fires
June 13, 2007**

Prepared by C.O. Bailey GISS
06/12/2007, PM Shift

Firelines	ICS_Firepoints	ICP	Safety Zone	Branch	Div	0 2.5 5 Miles
Controlled Line	Helibase	RAWS Station	Staging Area	Camp	Drop Point	
Team Break One	Hot Spot	Rain Gauge	Water Source		Helispot	
Uncontrolled Fire Edge	Completed Dozer Line					

NAD 83, UTM Zone 17N



- ICS Firepoints type**
- Helibase (H)
 - Hot Spot (*)
 - ICP (square)
 - RAWS Station (X)
 - Rain Gauge (water drop)
 - Safety Zone (S)
 - Staging Area (S)
 - Water Source (W)
 - Branch (bracket)
 - Camp (C)
 - Drop Point (black dot)
 - Helispot (blue dot)
- Firelines Type**
- Controlled Line (solid black)
 - Completed Dozer Line (hatched)
 - Team Break One (pink)
 - Uncontrolled Fire Edge (red)

- 070611_2138_sweatfarm_hot_spots (*)
- 070611_2138_sweatfarm_intense_heat (hatched)

IAP Map
Sweat Farm Road and
Bugaboo Scrub 2 Fires
June 13, 2007

Prepared by C.O. Bailey GISS
 06/12/2007, Night Shift

