



Sweat Farm Fire

Incident Action Plan

Tuesday

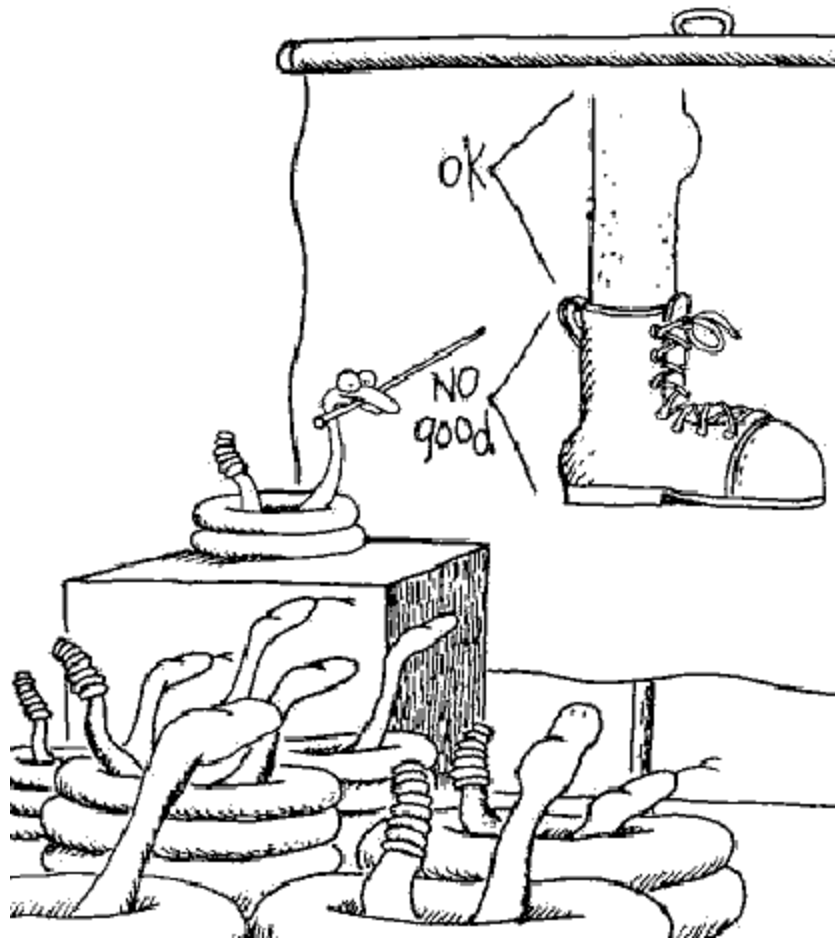
June 19, 2007

All Operational Periods



Larsen

AHAJOKES.COM



GEMA

INCIDENT OBJECTIVES	1. Incident Name Sweat Farm and Bugaboo Fires	2. Date Prepared 6/18/07	3. Time Prepared 1830												
	4. Operational Period 06/19/2007 All Operational Periods														
5. General Control Objectives For The Incident (Include Alternatives) <ol style="list-style-type: none"> 1. Provide for the safety of the public and assigned incident resources through effective hazard / risk assessment and mitigation. 2. Provide timely and accurate information updates to the GFC, cooperators, affected communities, and other stakeholders. 3. Provide accurate cost accountability and documentation of expenditures for the duration of the incident. 4. Develop and maintain coordination with local fire departments, local EOC directors, GEMA, other IMT's deployed in the area, GOAL, and private industry. 5. Provide support on fires as requested by Georgia GFC District 8 and District 10. 6. Conduct all incident activities in a manner free of discrimination, harassment, and inappropriate behavior. 7. Keep the Sweat Farm Road, Kneeknocker, and Roundabout fires contained within the current established perimeters. 8. Assist with identifying and mitigating Emergency & Temporary Repairs. 															
6. Weather Forecast For Period <p>WEATHER: Mostly cloudy with Scattered Showers and Thunderstorms. Chance of wetting rains 50 percent.</p> <p>MAX TEMPERATURES: 88-91 (Down 5 to 6)</p> <p>MIN HUMIDITY: 35 to 40% (Up 5 to 10 percent)</p> <p>20 FT WINDS: Southwest 5 to 10 mph , with gusts up to 17 mph in the afternoon.</p> <p>STABILITY/INVERSION: Mixing heights near 5900 ft. Afternoon Dispersion index 33. Haines Index 4 (Low). Transport winds SW 7-10. Nocturnal inversion lifting and dissipating around 0900. LAL: 3</p>															
7. General Safety Message <p style="text-align: center;">SEE ATTACHED SAFETY MESSAGE.</p>															
8. ATTACHEMENTS (X IF ATTACHED) <table style="width: 100%; border: none;"> <tr> <td><input checked="" type="checkbox"/> Organization List - ICS 203</td> <td><input checked="" type="checkbox"/> Division Assignment List - ICS 204</td> <td><input checked="" type="checkbox"/> Phone List</td> </tr> <tr> <td><input checked="" type="checkbox"/> Fire Behavior Forecast</td> <td><input checked="" type="checkbox"/> Air Ops Summary-ICS 220</td> <td><input checked="" type="checkbox"/> Maps</td> </tr> <tr> <td><input checked="" type="checkbox"/> Weather Forecast</td> <td><input checked="" type="checkbox"/> Communications Plan - ICS 205</td> <td><input checked="" type="checkbox"/> Unit Log- ICS 214</td> </tr> <tr> <td><input checked="" type="checkbox"/> Safety Message</td> <td><input checked="" type="checkbox"/> Medical Plan - ICS 206</td> <td><input type="checkbox"/></td> </tr> </table>				<input checked="" type="checkbox"/> Organization List - ICS 203	<input checked="" type="checkbox"/> Division Assignment List - ICS 204	<input checked="" type="checkbox"/> Phone List	<input checked="" type="checkbox"/> Fire Behavior Forecast	<input checked="" type="checkbox"/> Air Ops Summary-ICS 220	<input checked="" type="checkbox"/> Maps	<input checked="" type="checkbox"/> Weather Forecast	<input checked="" type="checkbox"/> Communications Plan - ICS 205	<input checked="" type="checkbox"/> Unit Log- ICS 214	<input checked="" type="checkbox"/> Safety Message	<input checked="" type="checkbox"/> Medical Plan - ICS 206	<input type="checkbox"/>
<input checked="" type="checkbox"/> Organization List - ICS 203	<input checked="" type="checkbox"/> Division Assignment List - ICS 204	<input checked="" type="checkbox"/> Phone List													
<input checked="" type="checkbox"/> Fire Behavior Forecast	<input checked="" type="checkbox"/> Air Ops Summary-ICS 220	<input checked="" type="checkbox"/> Maps													
<input checked="" type="checkbox"/> Weather Forecast	<input checked="" type="checkbox"/> Communications Plan - ICS 205	<input checked="" type="checkbox"/> Unit Log- ICS 214													
<input checked="" type="checkbox"/> Safety Message	<input checked="" type="checkbox"/> Medical Plan - ICS 206	<input type="checkbox"/>													
9. Prepared By (Planning Section Chief) Vicky Edge		10. Approved By (Incident Commander) Troy Floyd													
ICS 202		NFES 1326													

ORGANIZATION ASSIGNMENT LIST		9.	Operations Section	
1. Incident Name		Field Ops	Brantley McManus / David Colton (T)	
Sweat Farm Fire		Planning Ops	Rich Gray/Steve Gray (T)	
2. Date	3. Time	a.	Sweat Farm	
June 18, 2007	2000	Branch Director	Levy Rentz	
4. Operational Period		Group	Mop Up/ETR Group 1	Steve Abbott
June 19, 2007 All Operational Periods		Group	Mop Up/ETR Group 2	Larry Bennett
5.	Command	Group	Mop Up/ETR Group 3	Mike Brunson
Incident Commander	Troy Floyd	Group	Mop Up/ETR Group 4	Shawn Alexander
Liaison	Buck Kline	Group	Mop Up/ETR Group 5	Jerome Harvey
Safety Officer	Munns/Godwin/Hawkins (T)			
Information Officer	Jenny Lynn Bruner/ William Spinrad			
Human Resources	Sherri Cummings (T)			
6.	Agency Representatives			
Agency	Name			
GFC District 8	Frank Sorrells			
GFC District 10	Willard Fell			
GFC Protection Dept	Alan Dozier			
GEMA	Alan Robinson			
GOAL	Skippy Reeves			
Okefenokee NWR	Maury Bedford			
Superior Timber	Andy Stone			
GA DNR	Joe Yeager			
		e.	Special Groups	
7.	Planning Section	Group	LE/Arson	Mike Heath
Chief	Vicky Edge	Group	ETR / DINS	Ken Luckow
Resources Unit	Thomas Barrett/Jamie Leigh-Powell (T)			
Situation Unit	Steve Chapman			
Documentation Unit	Jamie Leigh-Powell			
Demobilization Unit	Harold West/Paul Dore			
CTSP	Trey Spivey/Rusty Brown			
THSP	Ken Luckow			
Incident Meteorologist	Daniel Byrd	f.	Air Operations Branch	
Status/Check In	Sharon Hale/Keith Murphy	Air Operations Branch Director	George Martin	
GISS	Blount / Whitworth/Burnett	Air Support Supervisor	Johnny Stephens	
		Helibase Manager	Melvin Tate/Denise Croker (T)	
8.	Logistics Section	GFC Air Operations	Mike Leverette	
Chief	Willie Boston	HELM	Josh Ingle/Randy Carter	
Facilities Unit	Tom Lambert/Jimmy Caldwell	HECM	James Ballard	
Hotel Managers	Jeremy Hughes/John Wall	HECM (T)	Wesley Whisanhunt/Ray Brundage	
Supply Unit	Terry Lemmon	ABRO	Ron Chisholm	
Food Unit	Scott Roper			
Base Camp Manager	Fred Dunets			
Base Camp Manager	Edgar Cormier / Ronnie Jones	10.	Finance Section	
Ground Support Unit	Mike Summer/Michele Sanchez	Chief	Grace Reid	
Equipment Manager	Willie Griffis	Incident Business Advisor	Jill Lipsey	
Ordering Manager	Tom French	Time Unit Leader	Vickie Kitchens	
Security Manager	Stephen Wilson/Don Poovey	Purchasing Team Leader	James Conner	
Medical Unit	Mark Millirons	EQTR Lead	Amy Treadwell	
Communications Unit	Howard Ure/Kelly Towe	Cost Unit	Eillene Crouse	
RCDM		Comp/Claims	Miguel Martinez	
		Prepared by (Resource Unit Leaders) Thomas Barrett/Jamie Powell (T)		

Human Resource Message

DO THIS:

Stress Reduction Kit

**Bang
Head
Here**

Directions:

1. Place kit on FIRM surface.
2. Follow directions in circle of kit.
3. Repeat step 2 as necessary, or until unconscious.
4. If unconscious, cease stress reduction activity.

AHAJOKES.COM

INSTEAD OF THIS:



If you are feeling stressed, take a few minutes to remove yourself from the situation. Take a walk, take your mind off the cause of your stress, and then return to your task with a fresh outlook.

☐ WEATHER FORECAST**FORECAST NO:** 61**PREDICTION FOR:** Day Ops**SHIFT DATE:** Tuesday 06/19/07**TIME AND DATE****FORECAST ISSUED:** 1900 hours 06/18/07**NAME OF FIRE:** Sweat Farm**UNIT:** Georgia Forestry Commission**SIGNED:** *Dan Byrd***Incident Meteorologist****...STRONG STORMS POSSIBLE WEDNESDAY...**

WEATHER DISCUSSION: High pressure will give way to a cold front that will move south towards the area today and out ahead of it moisture will continue to increase. Scattered showers and thunderstorms should develop during the mid to late afternoon hours. There will continue to be a chance of thunderstorms through Wednesday as the front slowly moves through the area. Some of the Storms on Wednesday may be strong with heavy rainfall. The front will become stationary over the area on Thursday and this will kick off Scattered afternoon showers and thunderstorms through Saturday.

WEATHER FORECAST DAY SHIFT TUESDAY:**WEATHER:** Mostly cloudy with Scattered Showers and Thunderstorms. Chance of wetting rains 50 percent.**MAX TEMPERATURES:** 88-91 (Down 5 to 6)**MIN HUMIDITY:** 35 to 40% (Up 5 to 10 percent)**20 FT WINDS:** Southwest 5 to 10 mph , with gusts up to 17 mph in the afternoon.**STABILITY/INVERSION:** Mixing heights near 5900 ft. Afternoon Dispersion index 33. Haines Index 4 (Low).Transport winds SW 7-10. Nocturnal inversion lifting and dissipating around 0900. **LAL:** 3**WEATHER FORECAST FOR TUESDAY NIGHT:****WEATHER:** Mostly cloudy with Scattered Showers and Thunderstorms possible through the night.**MIN TEMPERATURES:** 68-71**MAX HUMIDITY:** 95-100%**20 FT WINDS:** Variable 2 to 4 mph.**STABILITY/INVERSION:** Dispersion index 7.**OUTLOOK FOR WEDNESDAY:**

Mostly cloudy with Showers and Thunderstorms. Chance of wetting rains 70 percent. Highs 86-89. Southwest winds 7 to 12 mph, with gusts up to 18 mph. Min RH 45 to 50%. Mixing Height 4400 feet, dispersion index 25, Transport winds SW 7-10 mph.

Extended Forecast:

Thursday... Partly Cloudy becoming mostly cloudy with Scattered Showers and Thunderstorms. Chance of wetting rains 50 percent. Lows 66 to 69. Highs 86 to 89. Min RH 45 to 50%. Northeast winds 5-10 G15 mph.

Friday... Partly Cloudy with scattered Showers and Thunderstorms. Chance of wetting rains 30 percent. Lows 66 to 69. Min RH 45 to 50%. Highs 88 to 91. Northeast Winds 5 to 10 G15 mph.

Saturday... Partly Cloudy with Isolated Showers and Thunderstorms. Chance of wetting rains 20 percent. Lows 63 to 66. Highs 89 to 92. Min RH 35 to 40%. Southeast Winds 5-10 G15 mph.

EXTRA INFORMATION:**Waycross Sun data**

Sunrise Today : 625 AM

Sunset Tonight: 836 PM

Monday's Raws Max/Min/Min RH and Precip

FWRS-08 Manor: 97/63/36 .00 Inches

Waycross RAWS: 93/71/44 .00 inches

FWRS-03 Perimeter: 95/64/38 .00 inches

FWRS-09 Church: 97/66/38 .00 inches

WEATHER FORECAST

Fire Behavior Forecast

INCIDENT	<i>Sweat Farm Rd. Fire</i>	OPERATIONAL PERIOD	06/19/07 Day
ADMINISTRATION UNIT	GA - GAS	FORECAST #61	

WEATHER SUMMARY:

Hot dry conditions will continue to dry fuels today. Although 10 hr fuels are at 16% locally, highest since the fire began. Winds are out of the SE today 5- mph 10, possibly increasing as the Easterly sea breezes come in this afternoon.

GENERAL FIRE BEHAVIOR: Day Shift

	Swamp Fuels FM 4	Upland Pine FM 7
Flame Length (feet)	4'	10-20'
Rate of Spread (ch/hr)	4'	15 - 20
Spotting Distance (miles)	0.3	0.3
Probability of Ignition (%)	10%	10%

SPECIFIC FIRE BEHAVIOR:

All Divisions: Yesterday's showers and today's rise in humidity will slow the fire activity. Reburn flames are relatively low @ <3' in areas that might not have received rain. Remember, fire behavior predictions are based on worse case scenario.

**Continue to monitor the line that has unburned fuel between the break and the fire in the refuge at Group/Division WE & WF. The hardwood fuel there are not carrying well. The fire will continue to carry through the heavy downed timber on the ground.

IA: Expect low fire behavior once fires become established. Should be well within the production rates and flame lengths constraints for dozers and engines.

Initial Attack fire from yesterday was < 1/10 acre, no control problems.
1 interior reburns @ <1/2 acre.

AIR OPERATIONS:

No air visibilities restrictions after 1000. Little smoke to hamper flights, and be aware of afternoon storms.

SAFETY:

Take advantage of wetter conditions to mop up and secure lines.

/s/ Vicky Edge
FBAN

06/18/2007
Date

1800
Time

SAFETY MESSAGE

Incident:

Sweat Farm Road

Date:

June 19, 2007

Time:

Day

Major Hazards and Risks:

- **Driving**
- **Sanitation**

Driving – Most accidents occur when firefighters are in transit to or from an Incident. Utilize all the Defensive Driving Procedures while traveling (headlights, seatbelts, speed limit, awareness, following distance, etc.)

Sanitation – Our old nemesis Camp Crud is back. There are some things we can do to prevent Camp Crud. Drink plenty of fluids (Water/Juice), get plenty of rest, and take many doses of vitamin C (recent studies indicate the body can only absorb 250 mg. of C per hour, the rest discards – so, take it often). And continue the prevention for several days after you get home.

Vehicle Accident IC Checklist

Report on Conditions

- Hazards (fuel, electrical, traffic, access, etc.).
- Need for law enforcement, ambulance, helicopter, tow truck, extrication tools.
- Injuries (number of victims, severity).
- Vehicles (number, type).

Establish Traffic Control

- Place apparatus between oncoming traffic and rescuers. Keep exhaust from pointing at scene, victims.
- Place warning devices.
- Establish positive communications.

Assess Fire Hazard or Potential

- Take suppression action as needed if trained, equipped and authorized.
- Be aware of fuels running downgrade.

Perform Patient Assessment

- Provide first aid or triage assessment.
- If there are fatalities, do not give names or other information over radio that would reveal identity, and do not move body.

Begin Incident Report. Document All Events.

Advise Agency Dispatcher of Changes

- Incident status (arrival of other units, patient transport, available on scene, etc.).



Safety Officers: Mark Munns, John Godwin, Julian Beasley, Tommy Hawkins, Charles Wood, Harry Kepler & John Barnes

INCIDENT ACTION PLAN SAFETY ANALYSIS										1. Incident Name Sweat Farm		2. Date 6/19/2007		3. Time Day Shift				
LCES* Analysis of Tactical Applications Lookouts Communications Escape routes Safety zones										Other Risk Analysis								
Branch	Indirect Fireline	Burn out Operations	Power lines	Road Conditions	Frontal Assault	Anchor Points	Extreme Conditions	Reburn Potential	Snags	Insects, snakes	LCES Mitigations	Smoke	Traffic & Railroad	Communications	Structure Protection	Fatigue/Hydration	Multi-aircraft	Other Risk Mitigations
Sweat Farm	1, 3, 4, 5, 7, 8, 10	1, 3, 4, 5, 6, 8, 10, 13, 37	15	12, 20	1, 3, 4, 5, 7, 8, 24, 29	8	1, 6, 7, 8, 10	1, 3, 5, 7	6	2	1. Establish & maintain LCES. Report LCES checks twice daily to DIVS on line & staggng.	1, 3, 4, 23, 27, 32, 33	20, 26, 28, 31, 33	1, 3, 10, 14	3, 5, 11, 19, 23, 25, 26, 27	18, 21	29, 30	18. Take plenty rest breaks and encourage to drink water NOW through briefings.
											2. Look UP,DOWN and AROUND - Use protective spray with deet on skin (Not on Nomex), permethrin can be used on nomex clothing. Do Not try to catch or kill snakes!							19. Watch out for complacency and fatigue. 8. Utilize Fire Departments for structure protection. Tailgate briefings on WUI hazards.
											3. Post experienced Lookouts. Make sure LCES is in place and make known.							20. Defensive driving will be addressed in all briefings.
											4. Use Air Attack as Lookout.							21. All personnel must meet the 2:1 work/rest ratio. Line supervisors and Safety will monitor closely.
										5. Flag escape routes on right side of escape route facing outward. Create new escape routes as you progress. Maintain LCES at all times.							22. Notify EOC of need to close CSX track adjacent track to ensure safety of firefighters due to excessive smoke or fire activity.	
										6. Post lookout for Snags, Runs, and Spot Fires.								23. Recongnize, Communicate & Avoid Hazmat situations.
										7. FBA/Metereoroligist to develop weather watch system.								24. Line Supervisors will provide clear, concise briefings.
										.8 Ensure Fireline is Anchored.								25. Review Structural "Watch Out" situations.
										9. All Firefighters must review current weather, predicted weather & fire behavior forecast.								26. Ensure Traffic Planning is safe and enforced. Heed Defensive Driving techniques noted in Safety Messages.
										10. Keep Firefighters informed of any changes in predicted weather, consider at least a two day weather pattern when planning burnout operations.								27. Avoid trash dumps in line construction & avoid smoke from dumps
										11. Refer to IRPG, pg. 12 on Power Line Hazards.								28. Relocate staggng area when driving conditions warrant.
										12. Observe all traffic signals and speed limits.								29. Air Attack and/or lead plane will always be in the air to coordinate aircraft.
										13. Ensure any burnout operations have been clearly communicated to ALL, prior to burning.								30. Personnel on ground will stay out of drop zones.
										14. Ensure GOOD tailgate briefings with resources unable to attend Operational Briefing (Include Ops, Logs, Fin & Plans info.).								31. Use spotter when backing vehicle(s).
										15. Scout ahead of tractor operations to avoid making contact with power poles and guide wires when tying into roads. Power companies are working in some DIVS, avoid all down lines as they may become charged.								32. Use bandanna to filter smoke in heavy smoke areas.
																		33. ALL vehicles and equipment must have lights on when running. Plastic colverts under some roads have burned and are collapsing under heavy loads, DIVS will coordinate which roads transport and tractors will use. GSP (912) 287-6500 : EMA (912) 287-4499.

Prepared by (Name and Position)

ICS 215A

Mark Munns SOF2, John Godwin SOF2, Julian Beaseley SOF3, Tommy Hawkins SOF2 (t)

DIVISION ASSIGNMENT LIST				1. Branch		2. Division/Group		
3. Incident Name Sweat Farm Fire				4. Operational Period Date: 6-19-07 Time: 0800 - 2000 DAY				
5. Operations Personnel								
Field Ops Planning Ops		Brantley McManus/David Colton (t) Rich Gray/Steve Gray(t)		Group Supervisor		Steve Abbott 6/19 912-218-2713 18*3213		
Branch Director Branch Safety		Levy Rentz		Group Safety		Charles Wood 6/22 912-218-9322 18*11974		
6. Resources Assigned this Period								
Strike Team/Task Force/ Resource Designator		Leader / Name		Last Shift Date	Number Persons	Trans. Needed	Drop Off PT./Time	Pick Up PT./Time
TFLD O-1304		Rusty Meadows		6/19	1	N	0800	2000
TFLD O-1653		Leslie Blackwell (T)		6/28	1	N	0800	2000
STEN O-1605		Durwin Carter		6/29	1	N	0800	2000
LAS Engine T6 E-1076		Lee / Basso		6/29	2	N	0800	2000
LAS Engine T6 E-2841		Goodwin / Lampkin		6/28	2	N	0800	2000
LAS Engine T6 E-1075		Poole / Sandell		6/29	2	N	0800	2000
TXS TP T2 JD750 E-3111		Brock/Ramsey		6/24	2	N	0800	2000
7. Control Operations Hold, and improve containment lines. Continue to address hot spots, and mop up. Respond to reburns as necessary, and evaluate ETR needs. Coordinate movement of resources with other Groups as needed								
8. Special Instructions <p style="text-align: center;">Concentrate on Divisions A-B-C-D-Z</p>								
9. Division/Group Communication Summary								
Function	Frequency	System	Channel	Function	Frequency	System	Channel	
Command	158.7825/162.2 Rx 153.7625/162.2 Tx Narrow Band	King NIFC	Group 11 1	Air to Ground Federal	167.950 Rx 167.950/110.9Tx Narrow Band	King NIFC	Group 11 Ch. 12	
Tactical Div/Group	168.200 Rx & Tx Narrow Band	King NIFC	Group 11 11	Air to Ground Georgia	159.390 Rx & Tx	King NIFC	Group 11 Ch. 13	
Prepared by (Resource Unit Leader) Thomas Barrett / Jamie Powell (T)		Approved by (Planning Section Chief) /s/Vicki Edge			Date June 18, 2007		Time 1900	

DIVISION ASSIGNMENT LIST				1. Branch		Division/Group MOP UP / ETR GROUP 2		
3. Incident Name Sweat Farm Fire				4. Operational Period Date: 6/19/07		Time: 0800-2000 Day		
5. Operations Personnel								
Field Ops Operations Chief		Brantley McManus/ David Colton(t) Rich Gray/Steve Gray(t)		Group Supervisor		Larry Bennett 6/19		
Branch Director Bracch Safety		Levy Rentz		Group Safety Officer		John Barnes 6/28 912-218-6552 18*4166		
6. Resources Assigned this Period								
Strike Team/Task Force/ Resource Designator		Leader / Name		Last Shift Date	Number Persons	Trans. Needed	Drop Off PT./Time	Pick Up PT./Time
TFLD O-1655		Mickey Walley		6/29	1	N	0800	2000
ST Tractor Plow T3 O-1555		Rodney Heard		6/22	1	N	0800	2000
GAS TP T3 E-3099		Smith		6/22	1	N	0800	2000
GAS TP T3 E-3101		Cross		6/22	1	N	0800	2000
GAS TP T3 E-3102		Reynold		6/22	1	N	0800	2000
Trackhoe Shorty E-2925		Stevens			1	N	0800	2000
DINS O-1573		Brian Snow		6/24	1	N	0800	2000
7. Control Operations ; Hold, and improve containment lines. Continue to address hot spots, and mop up. Respond to reburns as necessary, and evaluate ETR needs. Coordinate movement of resources with other Groups as needed								
8. Special Instructions ; Concentrate on Divisions J-K								
9. Division/Group Communication Summary								
Function	Frequency	System	Channel	Function	Frequency	System	Channel	
Command	158.7825/162.2 Rx 153.7625/162.2 Tx Narrow Band	King NIFC	Group 11 1	Air to Ground Federal	167.950 167.950/110.9 Narrow band	King NIFC	Group 11 Ch. 12	
Tactical Div/Group	169.900 Rx & Tx Narrow Band	King NIFC	Group 11 10	Air to Ground Georgia IA	159.390	King NIFC	Group 11 Ch. 13	
Prepared by (Resource Unit Leader) Thomas Barrett / Jamie Leigh-Powell (t)		Approved by (Planning Section Chief) /s/ Vicky Edge		Date June 18, 2007		Time 2000		

DIVISION ASSIGNMENT LIST			1. Branch		2. Division/Group Mop Up/ETR Group 3		
3. Incident Name Sweat Farm Fire			4. Operational Period Date: 6/19/07		Time: 0800-2000 Day		
5. Operations Personnel							
Field Ops Planning Ops	Brantley McManus/David Colton(t) Rich Gray/Steve Gray(t)		Group Supervisor		Shawn Alexander		6/19
Branch Director	Levy Rentz		Group Safety Officer		Harry Keppler 912-218-9316		6/22 18*11828
6. Resources Assigned this Period							
Strike Team/Task Force/ Resource Designator	Leader / Name		Last Shift Date	Number Persons	Trans. Needed	Drop Off PT./Time	Pick Up PT./Time
TFLD	O-1654	Steve Anderson	7/02	1	N	0800	2000
TXS TP T4	E-113	Fife/Upchurch	6/29	2	N	0800	2000
TXS ENG T6	E-1181	Wobus/Rex	7/02	2	N	0800	2000
TXS TP T2	E-3109	McCallie/Burnett ***	6/24	2	N	0800	2000
7. control operations: Hold, and improve containment lines. Continue to address hot spots, and mop up. Respond to reurns as necessary, and evaluate ETR needs. Coordinate movement of resources with other groups as needed ***OUT OF SERVICE							
8. Special Instructions Concentrate efforts in DIVS WA,WQ,WR,H							
9. Division/Group Communication Summary							
Function	Frequency	System	Channel	Function	Frequency	System	Channel
Command	158.7825/162.2 Rx 153.7625/162.2 Tx Narrow Band	King NIFC	Group 11 1	Air to Ground Federal	167.950 167.950/110.9 Narrow band	King NIFC	Group 11 Ch. 12
Tactical Div/Group	168.050 Rx & Tx Narrow Band	King NIFC	Group 11 8	Air to Ground Georgia IA	159.390	King NIFC	Group 11 Ch. 13
Prepared by (Resource Unit Leader) Thomas Barrett / Jamie Powell (T)		Approved by (Planning Section Chief) S/ Vicky Edge			Date June 18, 2007		Time 1900

DIVISION ASSIGNMENT LIST				1. Branch		2. Division/Group Mop Up/ETR Group 4			
3. Incident Name Sweat Farm Fire				4. Operational Period Date: 6-19-07 Time: 0800 – 2000 Day					
5. Operations Personnel									
Field Ops Operations Chief		Brantley McManus/David Colton (T) Rich Gray/Steve Gray (T)			Group Supervisor		Mike Brunson 6/29		
Branch Director Branch Safety		Levy Rentz			Group Safety Officer		Harry Keppler 6/22 912-218-9316 18*11828		
6. Resources Assigned this Period									
Strike Team/Task Force/ Resource Designator		Leader / Name		Last Shift Date	Number Persons	Trans. Needed	Drop Off PT./Time		Pick Up PT./Time
TFLD O-567		Chris Stevenson		7/1	1	N	0800		2000
STLD O-1626		Mike Smith		7/1	1	N	0800		2000
LAS TP T2 E-1103		Marcantel/Sweat		6/29	2	N	0800		2000
LA T/P T2 E-1102		Weatherford/Wager		6/29	2	N	0800		2000
Excavator E-3191		Nichols			1	N	0800		2000
Excavator E-3192		Nichols			1	N	0800		2000
LAS ST ENG T6 O-1590		Jeff Anders		6/29	2	N	0800		2000
ENG LAS Engine T6 E-1070		Simmons/Smith		6/29	2	N	0800		2000
ENG-LAS Engine T6 E-1071		Smith/Blackwell		6/29	2	N	0800		2000
ENG-LAS Engine T6 E-1072		Tilley/West		6/29	2	N	0800		2000
ENG LAS Engine T6 E-1073		Williams/Smith		6/29	2	N	0800		2000
ENG LAS Engine T6 E-1074		Cannon/Smith		6/29	2	N	0800		2000
WAT2 Smith #1 E-119					1	N	0800		2000
STLD O-1647		Todd Nightingale		6/22	1	N	0800		2000
TXS TP T4 E-114		Kaiser/Easley		6/19	2	N	0800		2000
TXS TP T4 E-112		O'Brian/Shew		6/29	2	N	0800		2000
Excavator Lee E-3123					1	N	0800		2000
Excavator E-3173		Corbett			1	N	0800		2000
DINS O-1571		Dennis Martin		6/27	1	N	0800		2000
DINS O-1584		David Streetman		6/26	1	N	0800		2000
7. Control Operations									
Hold, and improve containment lines. Continue to address hot spots, and mop up. Respond to reburns as necessary, and evaluate ETR needs.									
Coordinate movement of resources with other groups as needed									
8. Special instructions									
Concentrate efforts in DIVS I,WW,WX,WP									
9. Division/Group Communication Summary									
Function	Frequency	System	Channel	Function	Frequency	System	Channel		
Command	158.7825/162.2 Rx 153.7625/162.2 Tx Narrow Band	King NIFC	Group 11 1	Air to Ground	167.950 167.950/110.9 Narrow band	King NIFC	Group 11 Ch. 12		
				Federal					
Tactical Div/Group	168.22 Rx & Tx Narrow Band	King NIFC	Group 11 11	Air to Ground Georgia IA	159.390	King NIFC	Group 11 Ch. 13		
Prepared by (Resource Unit Leader) Thomas Barrett / Jamie Powell (T)			Approved by (Planning Section Chief) /s/Vicky Edge			Date June 18, 2007		Time 1900	

DIVISION ASSIGNMENT LIST			1. Branch		2. Division/Group Mop Up/ETR Group 5		
3. Incident Name Sweat Farm Fire			4. Operational Period Date: 6-19-07 Time: 0800 - 2000 DAY				
5. Operations Personnel							
Field Ops Planning Ops	Brantley McManus/David Colton (T) Rich Gray/Steve Gray(T)		Group Supervisor		Jerome Harvey 18*1608		6/19
Branch Director Branch Safety	Levy Rentz		Group Safety Office		Julian Beasley		6/19
6. Resources Assigned this Period							
Strike Team/Task Force/ Resource Designator		Leader / Name	Last Shift Date	Number Persons	Trans. Needed	Drop Off PT./Time	Pick Up PT./Time
TFLD	O-1508	Mike Lee	6/18	1	N	0800	2000
TFS ENG3	E-3091	Shane Crimm	6/24	4	N	0800	2000
TXS TP T3 JD650	E-3116	Elrod/Martin	6/22	2	N	0800	2000
Motor Grader	E-1314	Hendly		1	N	0800	2000
WAT2Smith #2	E-180	Smith		1	N	0800	2000
7. Control Objectives Hold, and improve containment lines. Continue to address hot spots, and mop up. Respond to reburns as necessary, and evaluate ETR needs. Coordinate movement of resources with other Groups as needed							
8. Special Instructions Concentrate on Divisions WB, WD, WO							
Division/Group Communication Summary							
Function	Frequency	System	Channel	Function	Frequency	System	Channel
Command	158.7825/162.2 Rx	King NIFC	Group 11 1	Air to Ground Federal	167.950 167.950/110.9 Narrow band	King NIFC	Group 11 Ch.12
	153.7625/162.2 Tx Narrow Band						
Tactical Div/Group	154.280 Rx & Tx Mutual Aid	King NIFC	Group 11 6	Air to Ground Georgia IA	159.390	King NIFC	Group 11 Ch. 13
Prepared by (Resource Unit Leader) Thomas Barrett / Jamie Powell (T)		Approved by (Planning Section Chief) /s/Vicky Edge			Date June 18, 2007		Time 1900

DIVISION ASSIGNMENT LIST			1. Branch		2. Division/Group ETR DINS GROUP		
3. Incident Name Sweat Farm Fire / Big Turnaround /Bugaboo Scrub			4. Operational Period Date: 6-19-07 Time: 0800 - 2000 DAY				
5. Operations Personnel							
Field Ops Planning Ops		Group Leader		Ken Luckow			
Branch Director Branch Safety		Group Safety Office					
6. Resources Assigned this Period							
Strike Team/Task Force/ Resource Designator		Leader / Name	Last Shift Date	Number Persons	Trans. Needed	Drop Off PT./Time	Pick Up PT./Time
DINS O-1585		Chad Pritchett	6/26	1	N	0800	2000
DINS O-1583		Chad David	6/25	1	N	0800	2000
DINS O-1582		Mary Griffin	6/25	1	N	0800	2000
DINS O-1581		Mark McClure	6/24	1	N	0800	2000
DINS O-1572		Bert Early	6/24	1	N	0800	2000
DINS O-1580		Bo Chesser	6/24	1	N	0800	2000
7. Control Objectives							
8. Special Instructions Tie in with CA FUMT #2 DIVS before working outside of Sweat Farm Rd Fire delegation							
Division/Group Communication Summary							
Function	Frequency	System	Channel	Function	Frequency	System	Channel
Command	Depends on location. Refer to ICS-205	King NIFC	Group 11 2,3,4,5	Air to Ground Federal	167.950 167.950/110.9 Narrow band	King NIFC	Group 11 Ch.12
Tactical Div/Group	168.600 Rx & Tx	King NIFC	Group 11 7	Air to Ground Georgia IA	159.390	King NIFC	Group 11 Ch. 13
Prepared by (Resource Unit Leader) Thomas Barrett / Jamie Powell (T)		Approved by (Planning Section Chief) /s/Vicky Edge		Date June 18, 2007		Time 1900	

		1. Branch		2. Division/Group Law Enforcement / Arson Group			
3. Incident Name Sweat Farm Fire		4. Operational Period Date: 6-19-07 Time: 0800 - 2000 Day					
5. Operations Personnel							
Operations Chief		LE TEAM Leader		Mike Heath FLETC 18*11266			
Branch Director		Safety Officer					
6. Resources Assigned this Period							
Strike Team/Task Force/ Resource Designator	Leader / Name	Last Shift Date	Number Persons	Trans. Needed	Drop Off PT./Time	Pick Up PT./Time	
LA DOF	Jim Hilton		1	N	0700	2000	
LA DOF	Charlie Greer		1	N	0700	2000	
USDA /FS	Jill Forth		1	N	0700	2000	
GFM	Brian Clavier		1	N	0700	2000	
SC DOF	Russell Mixon		1	N	0700	2000	
SC DOF	Harold Lowrimore		1	N	0700	2000	
VA DOF	Donnie Davis		1	N	0700	2000	
VA DOF	Mike Womack		1	N	0700	2000	
PA DOF	Terry Smith		1	N	0700	2000	
PA DOF	Shawn Turner		1	N	0700	2000	
7. Control Operations <p style="text-align: center;">Immediately report suspicious activity through the Incident Operations Branch Director.</p>							
8. Special Instructions							
9. Division/Group Communication Summary							
Command		King NIFC		Logistics		King NIFC	Channel
Tactical Div/Group		King NIFC		Air to Ground		King NIFC	
Prepared by (Resource Unit Leader) Thomas Barrett / Jamie Powell (T)		Approved by (Planning Section Chief) Vicky Edge		Date June 18, 2007		Time 1900	

AIR OPERATIONS SUMMARY		PREPARED BY: George Martin	PREPARED DATE/TIME 6/18/07 1900			
1. INCIDENT NAME: Sweat Farm Road		2. OPERATIONAL PERIOD: Day Shift 6/19/07	START TIME: 0800	END TIME: 1900	SUNRISE: 0625	SUNSET: 2036
3. REMARKS (Safety Notes, Hazards, Air Operations Special Equipment, etc.): AIR TANKER REQUESTS THRU POGO <ul style="list-style-type: none"> All dispatches will come through the ICP in Waycross for state aviation resources. <u>Waycross Dispatch Advise Waycross Helibase of ACFT Dispatch</u> PERSONNEL STAY CLEAR OF ACTIVE DIPSITES Aircraft Dispatching Priorities: <ol style="list-style-type: none"> Life Structures Threatened Initial Attack Fire threatening perimeter control lines 				4. MEDEVAC A/C: Trauma 1 @ Jacksonville 26min: 1-800-223-4878		5. TFR: Released 6/18/07
6. PERSONNEL	Phone	7. FREQUENCIES	AM	FM	8. FIXED-WING	# Avail / Type/ Make-Model / FAA N# / Base(s)
AOBD: George Martin	Prim. 912-218-8182 Secon. 770-654-7904 ICP FAX: 912-285-6014	AIR/AIR FW: A/A Discretionary: IA/Breakouts	123.125 prim. 125.225 scdy. 122.925 GA IA 125.225		Air Tankers @ LCQ.	T-20 / LCQ / P3 (Day Off <u>Sun</u>) T-43 / LCQ / P2V (Day Off <u>Mon</u>) T-10/LCQ / P2V (Day Off <u>Thurs</u>) LP/14 @ LCQ
		AIR/AIR RW: A/A Discretionary: IA/Breakouts	123.125 prim. 125.225 scdy. 122.925 GA IA 125.225		Lead planes	
-State Aviation Lead Mike Leverette	478-951-2835	AIR/GROUND:	Georgia IA	159.390	Waycross Helibase—31 14.95 X 82 23.73 Pogo Helibase-30 44.25 X 82 07.69 Braganza Helispot- 31 07.23 X 82 15.23 -Avoid take-off / landing over ICP -High Towers in Area, -LOOK UP, LOOK DOWN, LOOK ALL AROUND	
-Sweat Farm Operations	912-285-6039				Fargo Helibase (Golf Course) N 30 41 27.3 x W 82 34 02.0 Stephen Foster SP (Pocket) N 30 47 32.2 x W 82 22 39..6	
ASGS: Johnny Stephens	360-463-0988	AIR/GROUND	Big Turnaround Sweat Farm	170.000		
Waycross HEBM: Melvin Tate	850-768-0008					
Waycross HB & Braganza HS:		DECK FREQ:		163.100	Other	
Braganza Helispot (Helitack will be available for aircraft landing and departing Braganza Helispot)		TOLC FREQ: (Braganza Helispot)		Rx: 151.145 Tx: 151.145	-Aircraft flight follow with Waycross on the Sweat Farm - Flight follow with Pogo on the Big Turnaround. -IA Air Attack for State--- Cessna 182's -Approved Helispots—Refer to Okefenokee NWR Dip Site Map -ALL FLIGHTS WILL BE CLEARED WITH AOBD	
Pogo Helibase	912-496-4415	FLT FOLLOWING:	Flight following will be on primary or secondary air to air freqs.			
Waycross Helibase	912-218-8937	.				
GA Forestry Hangar	912-338-5982					
Waycross District Dispatch	912-287-4915					

9. HELICOPTERS (Use Additional Sheets As Necessary)

BIG TURNAROUND AVIATION RESOURCES

SWEAT FARM ROAD AVIATION RESOURCES

FAA N#	TY	MAKE/MODEL	BASE	AVAIL	START	REMARKS	FAA N#	TYPE	MAKE/MODEL	BASE	AVAIL	START	REMARKS
N5BH	1	Sikorsky S-70A-27	Pogo	0900	0930	Bucket drops	N5843	3	Bell 206-L3	Waycross	0900	0930	Recon/ Admin/ IA
116AZ HT-766	1	S-61	Waycross	0900	0930	Bucket drops	71K (GA)	NA	Cessna 185	Waycross	0900	0930	IA, Aerial Det.
OKE 6 (N5738Y)	3	Bell 206-B3	Pogo	0900	0930	Days OFF 18/19	11H (GA)	NA	Cessna 182	Waycross	0900	0930	IA, Aerial Det.
N990K	1	Baron	Waycross	0900	0930	Air Attack							

10. TASK/MISSION/ASSIGNMENT (Type/Function includes: Air Tactical, Retardant, Recon, Personnel Transport, Water Dropping, S&R, etc.)

TYPE/FUNCTION	NAME OF PERSONNEL OR CARGO (if applicable) OR INSTRUCTIONS FOR TACTICAL AIRCRAFT	MISSION START	FLY FROM	FLY TO
Type I Helicopter	Operation and Logistic Support	0930	Helibase	Fire and Return
Type II Helicopter	Operation and Logistic Support	0930	Helibase	Fire and Return
Type III Helicopter	Operation and Logistic Support	0930	Helibase	Fire and Return
ATGS Platforms	Aerial Supervision of all Aircraft over Incidents	0930	Waycross Airport	Fire and Return
State Detection Fixed Wing	Aerial Detection and IA for New Fire Starts	0930	Waycross Airport	Fire and Return

INCIDENT RADIO COMMUNICATIONS PLAN		1. Incident Name Sweat Farm Road Fire		2. Date/Time Prepared 06/18/07		3. Operational Period Date/Time 06/19/07	
4. BASIC RADIO CHANNEL UTILIZATION							
Radio Type/Cache	Channel	Function	Frequency/Tone	Assignment	Remarks		
King NIFC	1	Ware EMA Rptr Narrow Band	158.7825 /162.2 Rx 153.7625 /162.2 Tx N	Command Repeater	Sweat Farm		
King NIFC	2	Okee North	164.575 Rx 163.150 /206.5 Tx N	ETR Command Link North Locations	OKR Waycross Linked to 4 & 5		
King NIFC	3	Okee South	164.775 Rx 163.150 /123.0 Tx N	ETR Command Link South Locations	OKR EDDY Linked to 4 & 5		
King NIFC	4	Okee East	164.625 Rx 163.150 /103.5 Tx N	ETR Command Link East Locations	OKR Admin Linked to 2 & 5		
King NIFC	5	Okee West	167.125 Rx 163.150 /156.7 Tx N	ETR Command Link West Locations	OKR Foster Linked to 2 & 4		
King NIFC	6	Tactical	154.280 Rx & Tx W	Structural & Tactical Mop up/ETR#5	Fire Line Tac. Mutual Aid		
King NIFC	7	Tactical	168.600 Rx & Tx N	ETR Group	Fire line Tac		
King NIFC	8	Tactical	168.050 Tx & Rx N	Mop up/ETR#3	Fire Line Tac.		
King NIFC	9	Tactical	159.285 Rx & Tx N	unassigned	Fire Line Tac S.E. Compact		
ccccKing NIFC	10	Tactical	169.900 Rx & Tx N	Mop up/ETR#2 Contingency Group	Fire Line Tac.		
King NIFC	11	Tactical	168.200 Rx & Tx N	Mop up/ETR#1 Mop up/ETR#4	Fire Line Tac.		
King NIFC	12	Air To Ground	170.000 Rx & Tx N	Sweat Farm Big Turn Around			
King NIFC	13	Air To Ground	159.390 Rx & Tx W	Ga. I/A			
King NIFC	14	Air Guard	168.625 Rx&Tx Tx 110.9 N	All Groups/Divs.	EMERGENCY CONTACT or redirect with incident aircraft		
5. Prepared By (Communications Unit) Kelly Towe							

MEDICAL PLAN	1. Incident Name Sweat Farm Road Fire	2. Date Prepared 6/16/07	3. Time Prepared 1600	4. Operational Period DAY SHIFT				
5. Incident Medical Aid Station								
Medical Aid Stations		Location			Paramedics Yes No			
Medical Unit / Waycross	912-218-9101	Georgia Forestry Headquarters ICP - Millirons (MEDL) Anderson (MEDL)				EMT		
Joe Anderson	18*11849 912-218-9317	Mobile on the North South Group Roads				EMT		
After Hours Contact								
Mark Millirons (MEDL)		Comfort Inn Waycross Room 208		912-283-3300 ext. 221 706-741-4216 cell				
Joe Anderson (MEDL)		Comfort Inn Waycross Room 208		229-244-1111 ext. 225 478-550-2988 cell				
6. Transportation								
A. Ambulance Services								
Name		Address		Phone		Paramedics Yes No		
Clinch County EMS		Homerville, GA Sherriffs Department		912-487-3250		Yes		
Ware County EMS		Waycross Georgia (911 to activate)		912-281-9467 Linc 1*96*116		Yes		
Air Ambulance Service								
Trauma 1 (155.340)		Jacksonville, FL (26 min/air)		1-800-223-4878		Yes		
AirMed		Augusta, GA (2 hrs/air)		1-888-792-9245		Yes		
Lifeflight (155.340)		Jacksonville, FL (35 min/air)		1-877-870-7779		Yes		
B. Incident Ambulances								
Name		Location			Paramedics Yes No			
Ware County EMS		Waycross (Drop Point 305)			Yes			
7. Hospitals								
Name		Address		Travel Time Air Ground		Phone	Helipad Yes No	Burn Center Yes No
Satilla Regional		410 Darling Ave Waycross Ga N 31°13.56 W 82°21.058		15 min 30 min		912-283-3030	Yes	No
Clinch Memorial Hospital		1050 Valdosta HWY Hommerville, GA		45 min		912-487-5211 ext 4502		No
South Georgia Medical Center		2501 N. Patterson St. Valdosta, GA 31602		60 min		229-333-1000		
Memorial Hospital		Savannah, GA 4700 Waters 3200.7 8107.6		40 min		912-350-8999	Yes	No
Shands Hospital (level I)		Jacksonville, FL N 30°20 97 W 82° 13 992		45 min 1.5 hrs		800-223-4878	Yes	Yes
Shands Burn Center		Gainesville, FL 38.33 N 082 20.73W		45 min		352-265-0300	Yes	Yes
Doctor's Hospital Joseph Still Burn Center		August,GA (Chief Burn Ctr 3328.943 8205.422		90 min 3 ½ hrs		877-863-9595 706-863-9595	Yes	Yes
8. Medical Emergency Procedures								
<p>Identify any EMTs and Paramedics in your crews. All medical emergencies will be reported to the Division Supervisor who will assume command and notify Line Medics.</p> <ol style="list-style-type: none"> Handle all injuries/ illnesses according to the 2006 IRPG page 37. Division Sup will assume command and ensure EMS is notified. Com will notify ambulance and coordinate with IC, SOF, MEDL <p>Helispots – Braganza Sweat Farm ICP: 31 07.23 X 82 15.23 Helispots – Fargo Base Camp: H-114 (4 mi marker Hwy 177 – Stephen C. Foster St. Prk) 30 47 30.02 X 82 22 39.5 H-113 (Hwy 441 - golf course) 30 41.739 X 82 33.961</p> <p>NIGHT TIME EMERGENCIES CONTACT – Call Mark Millirons or Joe Anderson at the hotel or on the phone at the above numbers.</p>								
Prepared by (Medical Unit Leader) Mark Millirons (MEDL) & Joe Anderson (MEDL)					10. Reviewed by (Safety Officer) Tommy Hawkins (T)			

DEMOBILIZATION PROCEDURES

A. HOW WILL IT HAPPEN?

1. Your supervisor declares your position excess.
2. The Section Chief agrees and notifies the Demob Unit Leader.
3. The Demob Unit Leader has a 24+ hour window to reassign you to another incident or arrange for transportation to your home unit.

B. WHAT CAN YOU DO TO EXPEDITE THE PROCESS?

1. Turn in all time report and equipment use records to **Time.**
2. If you have equipment, have an inspection completed by **Ground Support.**
3. Turn in any non-essential items you have checked out to **Supply** or **Communications.**
4. Complete and turn in Unit Logs on a daily basis to **Documentation** and get a Performance Evaluation from your supervisor (you keep original and a copy goes to the files)
5. If there is any change in your status, notify **Demob** immediately.
6. Check the Demob Board on a regular basis. Be available to move within a 1 to 2 hour notice.

THANK YOU REQUEST FORM

Sweat Farm Rd & Big Turnaround Fires

Please provide some contact information for those people, groups or enterprises you wish to recognize for their efforts or contributions to the management of this incident.

I would like to recognize: _____
Name of person

With a (select one):

Standard Certificate

Letter

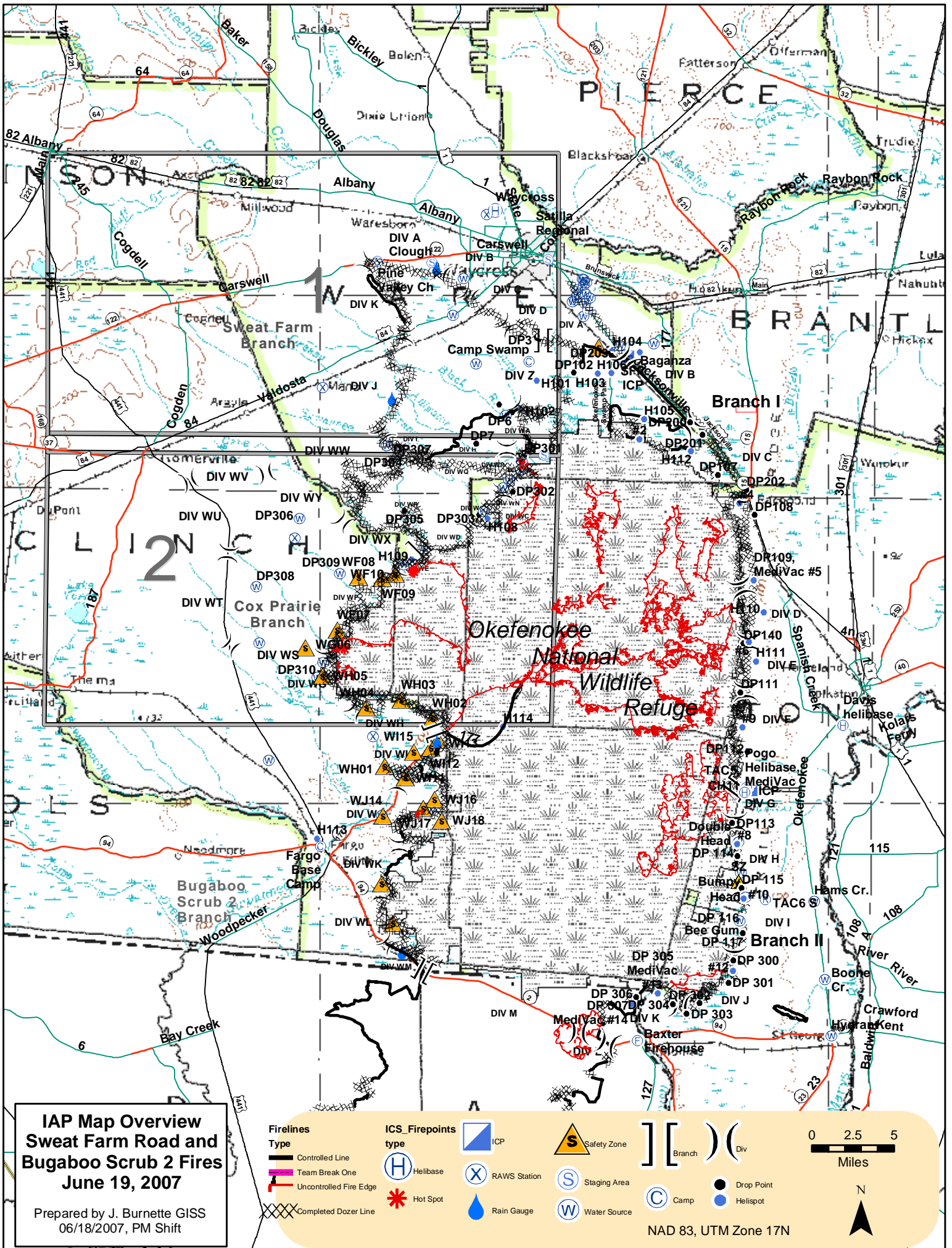
Mailing address: _____

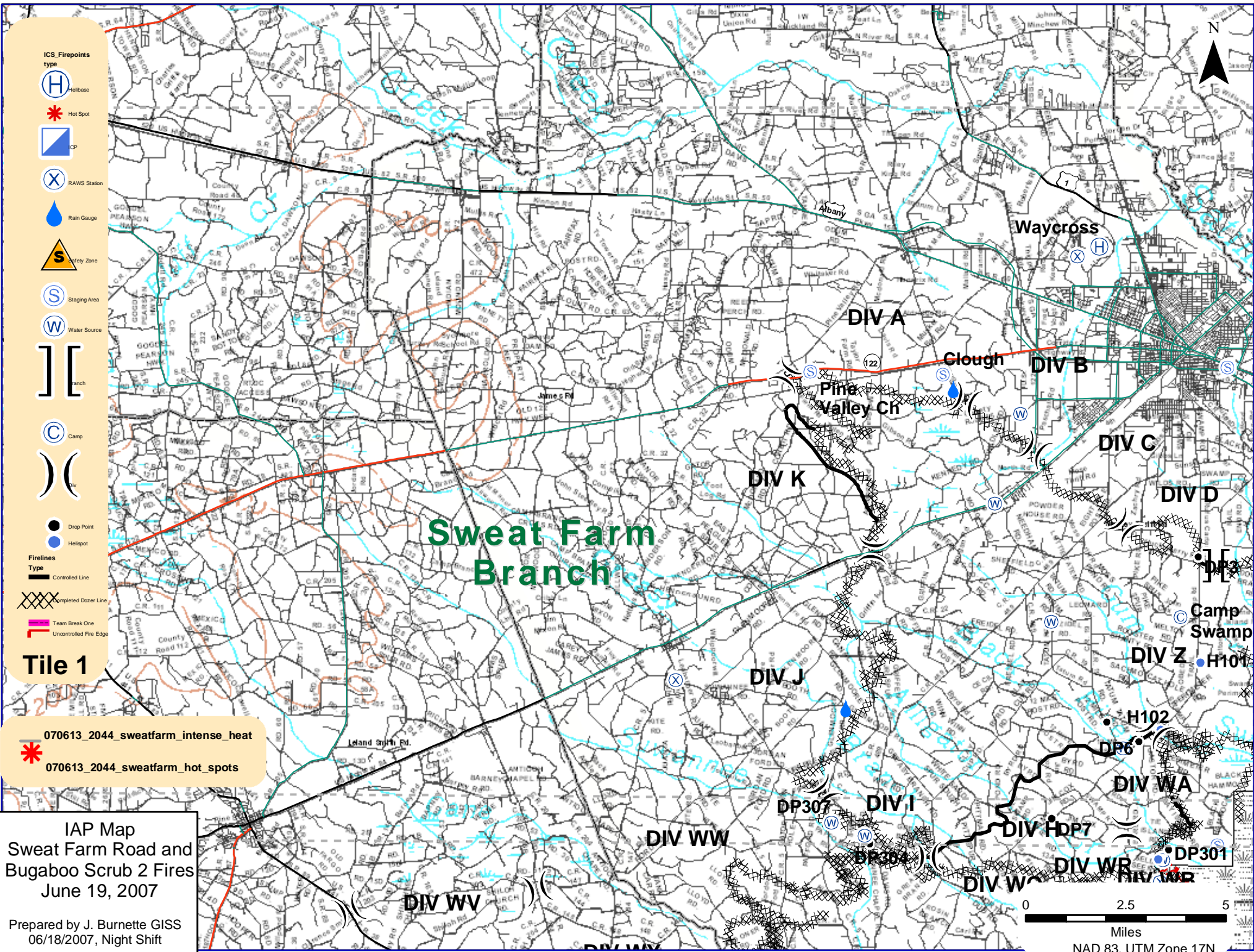
Reason for recognition: _____

Your name and position: _____

Sweat Farm Road Phone Roster 6-19-07

NAME	POSITION	PHONE NUMBERS	LINC ID	NAME	POSITION	PHONE NUMBERS	LINC ID
COMMAND & GENERAL STAFF				FINANCE			
Troy Floyd	IC	706-676-0168			Time	478-550-2995	
Sherri Cummings	HRSP	912-218-9342	18*12299		Roundabout	478-550-5982	
Buck Kline	LOFR		18*1615	Grace Reid	FSC	912-285-6038	
Jenny Lynn Bruner	PIO	912-218-9319	18*11959	James Conner	BUYT	912-285-6112	229-938-2952 cell
Bill Spinrad	PIO	912-281-8267		Eiillen Crouse	COST	912-285-6038	
Mark Munns	SOF2	912-218-9308	18*10090	Miguel Martinez	Comp/Claims	912-285-6038	760-420-8910 cell
John Godwin	SOF2	912-218-8325	18*7145	Vickie Kitchens	TIME	478-550-2995	
Tommy Hawkins	SOF	979-218-9909	18*11907	Amy Treadwell	EQTR	912-285-6038	
Charles Wood	SOF	912-218-9322	18*11974	LOGISTICS		912-285-6091	Fax 912-285-6111
John Barnes	SOF	912-218-6552	18*4166	ORDERING		912-285-6068	
Harry Kepler	SOF	912-218-9316	18*11828	Willie Boston	LSC	770-328-3186	
Agency Reps				Susan Cornett	LSC	936-546-1952	
Billy Leitch		912-218-9325	18*12022	Howard Ure	COML	936-671-2698	
Skippy Reeves		912-218-9359	18*12756	Mark Millirons	MEDL	912-218-9101	18*7480
George Constantino		912-398-7680		Joe Anderson	MEDL	912-637-5405	18*11849
Andy Stone		912-637-5261		Scott B Roper	FDUL	912-218-9321	
Joe Yeager		912-816-8732		Jim Caldwell	FACL	478-550-2985	
OPERATIONS				OTHER INCIDENT MANAGEMENT TEAMS			
Brantley McManus	OSC	912-218-9313	18*10887	California FUMT #2 Phone Roster			
Steve Gray	OSC	912-218-5414	18*11904	Fredrick Dunets (Camp for the Blind-Night)	BCMG	912-218-9354	
Rich Gray	OSC		18*11981	John Wall	Hotel Manager	936-546-3109	
Levy Rentz	OPBD	229-356-0020	18*1609	Mike Summers	GSUL	936-546-1957	
Jerome Harvey	DIVS		18*1608	Michelle Sanchez	GSUL	912-281-8276	
Steve Abbott	DIVS	912-218-2713	18*3213	Terry Lemmon	SUPL	936-546-1953	
CSX RAIL ROAD OPERATIONS- Dixon		912-270-0699		Tom French	ORDM	208-634-6947	
AIR OPERATIONS				Dennis M Evans	THSP	478-957-9709	
SEE AIR OPS SUMMARY (220)							
PLANNING							
George Martin	AOBD	912-218-8182		NAME		PHONE NUMBERS	
Johnny Stephens	ASGS	360-463-0988		<i>INFORMATION</i>		912-496-4176	
				<i>PLANNING</i>		912-496-4173	
				<i>OPERATIONS</i>		912-496-4132	
Vicky Edge	PSC	912-218-7586	18*6871	<i>AIR OPERATIONS</i>		912-496-4415	
Thomas Barrett	RESL	912-218-9009	18*6418	<i>FINANCE</i>		912-496-4102	
Steve Chapman	SITL	478-550-2468	18*12670	<i>LOGISTICS</i>		719-334-6525	601-201-1776
Jamie Leigh-Powell	DOCL	912-285-6046		<i>EXPANDED DISPATCH</i>		912-496-3162	
Trey Spivey / Rusty Brown	CTSP	912-285-6046		<i>COMMUNICATIONS</i>		912-496-4175	
Billy Whitworth / Josh Burnett	GISS	912-285-6046		ETR SPECIALISTS			
Harry Blount	GISS	803-397-2914		Ken Luckow		912-218-9513	18*11725
Harold West	DMOB	912-218-7726	18*4203	Bryan Snow			18*12520
Paul Dore	DMOB	912-218-9361	18*12771	Bert Early		912-218-9512	18*11583
Buford Sanders	THSP	478-951-8238		Mark McClure		912-28-9320	18*11960
Daniel Byrd	IMET	912-218-9309	18*6871	John Colberg		912-218-9343	18*12314
MISC.				Bo Chesser		912-218-9360	18*12765
COMMAND DISPATCH		912-218-9044	18*6870	Chad David		912-218-8965	18*7610
MACON DISPATCH		912-218-9232	18*7378	Mary Griffen		404-535-2630	18*5261
MOP UP COMMAND			18*4918	Chad Pritchett		912-218-8343	18*4212
				David Streetman		912-218-9307	18*10062
				Dennis Martin		912-218-7218	18*7042





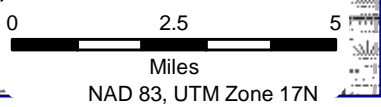
- ICS Firepoints type**
- Helibase
 - Hot Spot
 - CP
 - RAWS Station
 - Rain Gauge
 - Safety Zone
 - Staging Area
 - Water Source
 - Branch
 - Camp
 - Div
 - Drop Point
 - Helispot
- Firelines Type**
- Controlled Line
 - Completed Dozer Line
 - Team Break One
 - Uncontrolled Fire Edge

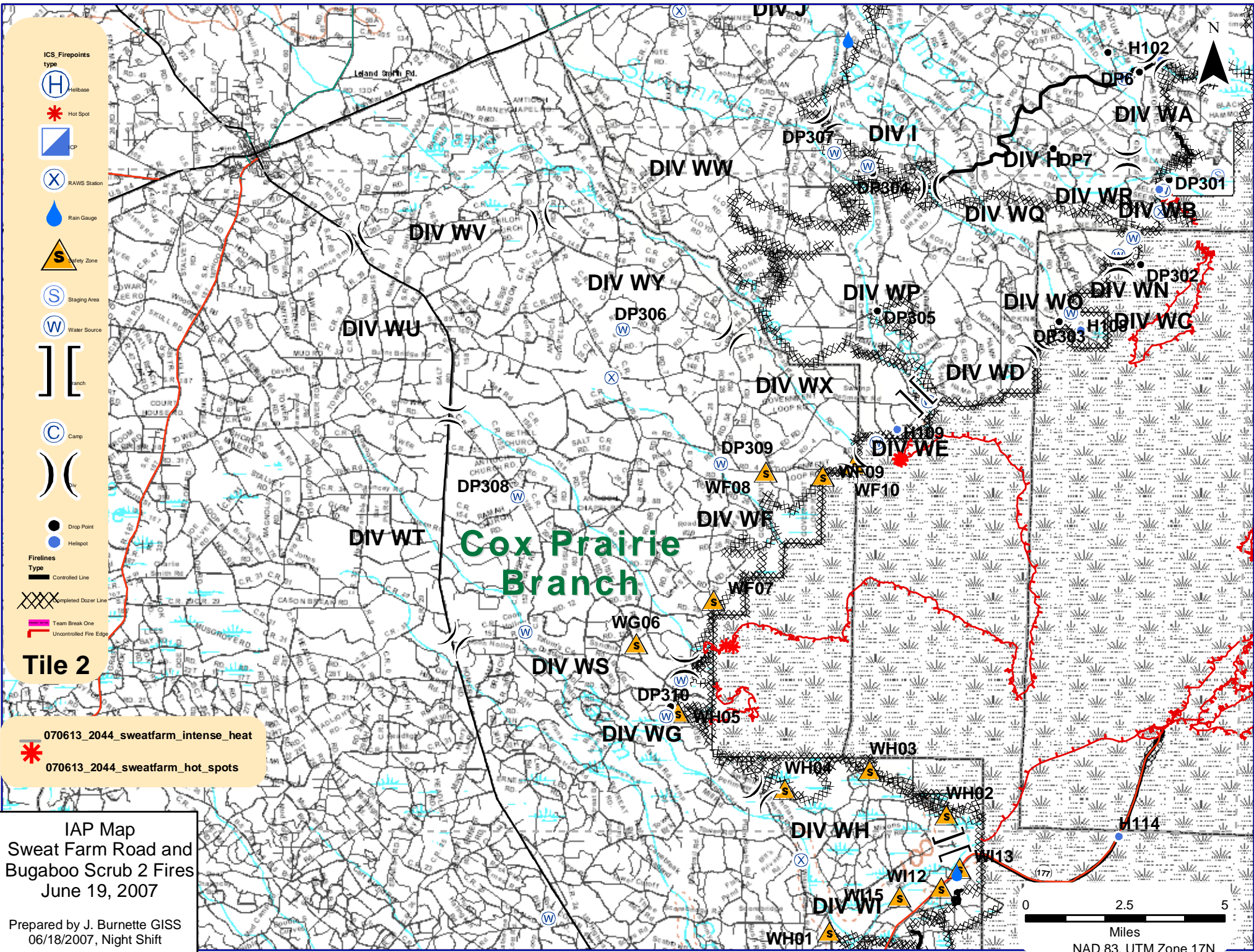
Tile 1

- 070613_2044_sweatfarm_intense_heat
- 070613_2044_sweatfarm_hot_spots

IAP Map
 Sweet Farm Road and
 Bugaboo Scrub 2 Fires
 June 19, 2007

Prepared by J. Burnette GISS
 06/18/2007, Night Shift





- ICS_Firepoints type
- Helibase
 - Hot Spot
 - CP
 - RAWS Station
 - Rain Gauge
 - Safety Zone
 - Staging Area
 - Water Source
 - Branch
 - Camp
 - Div
 - Drop Point
 - Helispot
- Firelines Type
- Controlled Line
 - Completed Dozer Line
 - Team Break One
 - Uncontrolled Fire Edge

Tile 2

070613_2044_sweatfarm_intense_heat

070613_2044_sweatfarm_hot_spots

IAP Map
 Sweat Farm Road and
 Bugaboo Scrub 2 Fires
 June 19, 2007

Prepared by J. Burnette GISS
 06/18/2007, Night Shift

0 2.5 5
 Miles
 NAD 83, UTM Zone 17N

