

**Georgia Bay Complex**  
**Sweat Farm Rd. Fire & Bugaboo Scrub II Fire**  
*Incident Action Plan*  
*Monday*  
**May 28, 2007**  
**Day, Night, and Swing Operational Periods**



GEORGIA FORESTRY  
COMMISSION



**GEMA**

<b>INCIDENT OBJECTIVES</b>	1. Incident Name <b>Georgia Bay Complex</b>	2. Date Prepared 5/27/07	3. Time Prepared 1830
4. Operational Period <b>05/28/2007 All Operational Periods</b>			
5. General Control Objectives For The Incident (Include Alternatives) <ol style="list-style-type: none"> <li>1. Provide for the safety of the public and assigned incident resources through effective hazard / risk assessment and mitigation.</li> <li>2. Provide timely and accurate information updates to the GFC, cooperators, affected communities, and other stakeholders.</li> <li>3. Provide accurate cost accountability and documentation of expenditures for the duration of the incident.</li> <li>4. Develop and maintain coordination with local fire departments, local EOC directors, GEMA, other IMT's deployed in the area, GOAL, and private industry.</li> <li>5. Provide support on initial and extended attack fires as requested by the 2 Southeast Georgia GFC districts.</li> <li>6. Conduct all incident activities in a manner free of discrimination, harassment, and inappropriate behavior.</li> <li>7. Keep the Sweat Farm Road and Bugaboo Scrub II fires: <ul style="list-style-type: none"> <li>• South of US 84 (Valdosta Highway)</li> <li>• East of Antioch Church Rd.</li> <li>• North of timber company Road #29</li> <li>• East of Swamp Perimeter Rd.</li> </ul> </li> <li>8. Keep the Kneeknocker and Roundabout fires within the current established fire lines / perimeters.</li> </ol>			
6. Weather Forecast For Period			
<p><b><u>WEATHER FORECAST DAY SHIFT Memorial Day:</u></b></p> <p><b>WEATHER:</b> Mostly cloudy in the morning with isolated sprinkles. Becoming partly cloudy afternoon.</p> <p><b>MAX TEMPERATURES:</b> 85 to 88 (24 hour trend ~ same)</p> <p><b>MIN HUMIDITY:</b> 34 to 39 (24 hour trend ~ 4% higher)</p> <p><b>20 FT WINDS:</b> Southeast wind increasing to 5 to 10 mph around 1100, then 7 to 11 mph with gusts to 18 mph from 1400 to 1900.</p> <p><b>STABILITY/INVERSION:</b> Mixing heights 6000 ft. Afternoon Dispersion index around 60. Haines Index 4 (moderate). Transport winds East-Southeast 17 mph.</p>			
7. General Safety Message			
<b>SEE ATTACHED SAFETY MESSAGE.</b>			
8. ATTACHEMENTS (X IF ATTACHED)			
<input checked="" type="checkbox"/> Organization List - ICS 203	<input checked="" type="checkbox"/> Division Assignment List - ICS 204	<input checked="" type="checkbox"/> Phone List	
<input checked="" type="checkbox"/> Fire Behavior Forecast	<input checked="" type="checkbox"/> Air Ops Summary-ICS 220	<input checked="" type="checkbox"/> Maps	
<input checked="" type="checkbox"/> Weather Forecast	<input checked="" type="checkbox"/> Communications Plan - ICS 205	<input checked="" type="checkbox"/> Unit Log- ICS 214	
<input checked="" type="checkbox"/> Safety Message	<input checked="" type="checkbox"/> Medical Plan - ICS 206	<input type="checkbox"/>	
<input checked="" type="checkbox"/> Incident Action Plan Safety Analysis -ICS 215	<input type="checkbox"/>	<input type="checkbox"/>	
9. Prepared By (Planning Section Chief)	10. Approved By (Incident Commander)		
<b>/S/ John Howard/Don Watson</b>	<b>/S/ Reid Hildreth/Dan Brandon</b>		

ORGANIZATION ASSIGNMENT LIST		9.	Operations Section	
1. Incident Name		Chief	Lee Burwell	
<b>Georgia Bay Complex</b>		Planning Ops	John Nichols / Jeff Burns (T)	
2. Date	3. Time	<b>a.</b>	<b>Sweat Farm Road Branch</b>	
May 27, 2007	2000	Branch Director	Buck Kline	
4. Operational Period		Branch SOFR	Ron Hamm	
<b>May 28, 2007 All Operational Periods</b>		Division/ICT3	A,B,C,D	D. Lachapelle
<b>5.</b>	Division/ICT3	Division	I,J,K	Ron Swann
Incident Commander	Reid Hildreth	Division	H-WA	Paul Brna
Deputy	Dan Brandon	Division	WQ,WR	Richard Gonzalez
Liason	J.Hambright/G. Thompson	Division	WW	unmanned
Safety Officer	Mike Huffman / Mark Luellen	Division	WX	Rick Witzke
Information Officer	MacDonald / Steltz / Weston / Berglund / Pineda	Division	WY	unmanned
<b>6.</b>		Division	Z	unmanned
Agency	Name	Division	Night Shift	Heath Morton
GFC District 8	Frank Sorrells	Group	Breakout	Jonathan Wilson
GFC District 10	Willard Fell	Group	Manor	Greg Arkle
GFC Protection Dept	Alan Dozier	Group	Structure Grp #1	Dennis Keen
Charlton Co. Liason	Billy Lietch	Group	Swing Shift	Pete Villa
GEMA	Allen Robinson	Group	Prep	Appling /Arnold
		<b>b.</b>	<b>Cox Prairie Branch</b>	
		Division	WE, WF, WG	P. Wall
		Division	WH	J. Hessel
		<b>c.</b>	<b>Bugaboo Scrub II Branch</b>	
<b>7.</b>	<b>Planning Section</b>	Branch Director	Amery Wells	
Chief	John Howard	Branch SOFR	Keith Jenkins	
Deputy	Don Watson (T)	Division	WH,WI,WJ	R. Adkins
Resources Unit	Pickens / Register / Cheek	Division	WK,WL,WM	J. Smith
Situation Unit	Chris Brenzel / Greg Smith (T)	Division	Night	Doug Mattox
Documentation Unit	Annie Lott	Group	Fireline Maintenance	Tommy Hodges
Demobilization Unit	Mary Lou Dozier	<b>d.</b>	<b>Special Groups</b>	
CTSP	Valleries / Chadwell (T)	Group	LE/Arson	Mike Heath
Fire Behavior Analyst	Gary Curcio	Group	Prevention	John Warner
Incident Meteorologist	John Pendergrast	<b>e.</b>	<b>Kneeknocker/Roundabout Branch</b>	
Status/Check In	O'Bryan / Dottellis(T) / Liv(T)			
Field Observer	White / Hurdle / Burnette / Shepherdson / Howell (T)	Group	Kneeknocker	S. Abbott /Ed Keith
GIS	Leatherwood / Gareau / Pugh (T) / Sumner (T)	Division	Roundabout A & D	B. McCarty
Infrared Interpreter	Lance Barnum	Division	Roundabout B & C	J. Jones
<b>8.</b>	<b>Logistics Section</b>	<b>f.</b>	<b>Air Operations Branch</b>	
Chief	T. Cleland / T. Ruff / F. LaCance (Fargo)	Air Operations Branch Director	Bob Seigler	
Facilities Unit	Clyde Leggins	Helibase Manager	Wayne Langston	
Supply Unit	Keith Walters	Air Support Supervisor	Ray Dew	
Food Unit	Chris Hubacker	GFC Air Operations	Mike Leverette	
Base Camp Manager	Knapp / Garman/ Dunets/ Whitaker	Air Tanker Coordinator		
Ground Support Unit	G. Cox / M. Summers	<b>10.</b>	<b>Finance Section</b>	
Ordering Manager	Travis Shidal / Benjamin Hauck	Chief	Marlene Sherrod / J. Johnson (T)	
Security Manager	Roger Atkinson	Incident Business Advisor	Paul Palmiotto	
Medical Unit	W. Williams / R. Carswell (T)	Time Unit Leader	Mavis Gragg	
Communications Unit	Larry Sharpe	Buying Team	Barbara Hatch	
Initial Attack Dispatcher		Personnel Time Recorder	Eunice Vankuren	
Equipment Manager	Danny Hayes	Equipment Time Recorder	Robert Drown / Mary Derendoff	
Mechanic		Procurement	Sheila Head / R. Chellberg (T)	
Technical Specialist		Cost Unit	Chris Overman / Ron Myers	
Receiving & Distribution Manager	Jamie Logan	Comp/Claims	Miguel Martinez	
Equipment Manager	Danny Hayes	Prepared by (Resource Unit Leader) Bill Pickens / Michael Cheek / Dennis Register		



# TAILGATE BRIEFING SHEET

## ☐ WEATHER FORECAST

FORECAST NO: 39

NAME OF FIRE: Georgia Bay Complex

PREDICTION FOR: Day & Night Ops

UNIT: Georgia Forestry Commission

SHIFT DATE: Memorial Day 05/28/07

SIGNED: *John Pendergrast*

TIME AND DATE 1800

Incident Meteorologist

FORECAST ISSUED: 05/27/07

### WEATHER DISCUSSION:

The main concerns are:

1. Ongoing dry conditions.
2. Afternoon wind increases.

### WEATHER FORECAST DAY SHIFT Memorial Day: (See table for specific incident forecasts )

**WEATHER:** Mostly cloudy in the morning with isolated sprinkles. Becoming partly cloudy afternoon.

**MAX TEMPERATURES:** 85 to 88 (24 hour trend ~ same)

**MIN HUMIDITY:** 34 to 39 (24 hour trend ~ 4% higher)

**20 FT WINDS:** Southeast wind increasing to 5 to 10 mph around 1100, then 7 to 11 mph with gusts to 18 mph from 1400 to 1900.

**STABILITY/INVERSION:** Mixing heights 6000 ft. Afternoon Dispersion index around 60. Haines Index 4 (moderate). Transport winds East-Southeast 17 mph.

	Sweat Farm Rd.	Bugaboo Scrub II	Roundabout	Knee-Knocker
Max Temperature:	85-88°	86-89°	87-90°	84-87°
Min Humidity:	34 to 38%	31-36%	29-33%	35-40%
Seabreeze Passage:	1530	1600	1700	1500

### WEATHER FORECAST NIGHT SHIFT MONDAY NIGHT: Southeast winds will diminish after 9 pm.

**WEATHER:** Partly cloudy. Patchy fog toward sunrise.

**MIN TEMPERATURES:** 62 to 65.

**MAX HUMIDITY:** Recovery around 70 percent near hotspots and 95 to 100 percent elsewhere.

**20 FT WINDS:** Southeast 4 to 7 mph in the evening gradually becoming calm by 0100.

**STABILITY/INVERSION:** Moderate inversion below 400 ft. Smoke drift Northwest. Dispersion 2.

### OUTLOOK FOR TUESDAY:

Partly cloudy and warm. High temperatures 87 to 90. Minimum RH values 28 to 32%. East winds 4 to 8 mph during the morning becoming 8 to 12 mph with peak gusts to 18 mph in the afternoon.

**EXTENDED: WEDNESDAY THROUGH SATURDAY:** High pressure offshore of South Carolina will weaken. A front will move into the Mississippi valley increasing southerly winds and moisture over Georgia late in the week.

Wednesday and Thursday: Partly cloudy. Lows in the mid 60s. Highs around 90. Min RH 32 to 36 percent. Southeast winds 5 to 10 mph with gusts to 15 mph in the afternoon.

Friday and Saturday: Partly cloudy. A 20 percent chance of showers or thunderstorms. Low in the Mid 60s highs in the Upper 80s. Min RH 35 to 40 percent. Afternoon winds southeast 10 mph with gusts to 15 mph.

# TAILGATE BRIEFING SHEET

## ☐ SAFETY MESSAGE

Incident:

Georgia Bay Complex

Date:

May 28, 2007

Time:

Day & Night Shift

### Major Hazards and Risks:

◦ Weather

◦ Air Operations

◦ Accountability

◦ Fire Behavior

◦ Driving

◦ Hydration

◦ Reburn Potential

◦ Holiday Traffic

Remain aware of what the fire is doing in your area especially in the late afternoon. Plan and act accordingly. Maintain LCES at all times!

With additional personnel and new fireline assignments it becomes very important to know and account for personnel assigned to you and ensure you make contact with them. Crews also make the connection with your supervisor. **Receive a briefing prior to line assignments!**

Drive alert and pay attention to the details. Longer shifts will require more recovery time to stay fresh.

Re-burns are still a potential. Know your escape routes and evaluate safety zones with this in mind.

Temperatures are rising and dehydration can occur quicker. Start hydrating early in the day and continue through the day. Don't wait until you are thirsty to drink. It will be more difficult to recover. Pee often and pee clear!!

SAFETY OFFICERS: Michael Huffman, Mark Luellen, Ronnie Hamm, Harry Kepler, Steve Snider, John Orton, Andy Meadows, Larry Miller, Pete Stewart, Rodney Bell, Jerry Dombrowske, Paul Boucher, Keith Jenkins, Alan Alsobrook, and Roy Leach

### ***Fire Order #8:***

***Give clear instructions and make sure they are understood.***

## Fire Behavior Forecast

<b><u>Forecast No. 38</u></b>	<b><u>Prediction for Monday</u></b>
<b><u>Name of Fire: Ga Bay Complex /Sweat Farm Rd.</u></b>	<b><u>Operational Period: May 28, 2007</u></b>
<b><u>Time and Date Forecast Issued</u></b> <b><u>1800 hrs 5/27/2007</u></b>	<b><u>Signed : Gary Curcio</u></b> <b><u>Fire Behavior Analyst</u></b>

**Weather Summary (See Today's Detailed Weather Forecast in the IAP):**

The RH recovery is still having no meaningful impact to fuel moistures. However, today's forecasted weather: **windspeed is very favorable: early AM windspeed is CALM, then increasing to SE 5 to 10 by 1100hrs, and then SE 7 to 11 w/ G to 18mph. Air temps will reach 85 – 90 with slightly improving RH's 29 – 40 %.**

**General Fire Behavior:** Yesterday there was very little expansion of the fire's perimeters. Major fire runs did not take place as the expected surge from the sea breeze did not materialize. Assessing today's windspeeds, cloud cover, & slightly improved RH's, it is optimistically projected that it will be difficult for fire behavior to make a major fire run until late into the critical burning period (1630hrs).

Today's fire behavior will remain capped until the inversion burns off -1030 hrs. The fire's activity will begin to step it up by 1400hrs. The bay type drains remain the most critical fuels. They have the greatest reburn potential, torching ability, and produce flame lengths that can contribute to spotting up to ¼ mile. Once these bay fuels start to burn, they afford the best opportunity for the fire's escape. Below is the expected fire behavior for respective fuel models. They can assist in time distance planning for new fireline construction.

**Specific Fire Behavior: Sweat Farm Fire & All Branches**

<b><u>Fuels type</u></b>	<b><u>Spread</u></b>	<b><u>Flame</u></b>	<b><u>Spotting</u></b>
Young plantation 4 to 7ft tall	30 ch/hr	8 –12 ft.	600 ft.
Pine Plantation w/ southern rough	15 ch/hr	4 – 6 ft.	600 ft.
Isolated Bays with hi shrub Pine & Cypress	40 ch/hr	15 –20 ft.	up to ¼ mi.

**Roundabout & Kneeknocker Fires:** These fires are less of a threat for sleepers or reburn potential. Roundabout did experience reburn & spotover in the fire's SW corner. Kneeknocker's persistent organic soil burning has just about run its course. Today's weather will assist in keeping these fires in check.

**Air Operations:** Moderate inversion & the smoke can limit aircraft visibility in the morning. Smoke production is expected & very poor visibility will be in the AM as winds will be CALM. All western fire perimeters remain impacted by smoke production.

**Safety:** Fire behavior is being forecasted to be more normal versus extreme today. Do not let yesterday's decrease in activity fool anyone. There is still one big refuge out there with many areas of intense heat that can come to life given the right conditions.

INCIDENT ACTION PLAN SAFETY ANALYSIS										1. Incident Name Georgia Bay Complex		2. Date 5-28-07		3. Time Day & Night Shift																					
LCES* Analysis of Tactical Applications Lookouts Communications Escape routes Safety zones										Other Risk Analysis																									
Branch/Divisions	Indirect Fireline	Burnout	Anchor Points	Fire Behavior	Unburned Area	Snags	Power Lines	Reburn Potential	Road Conditions	Direct Line	LCES Mitigation's								Other Risk Mitigation's																
											Traffic	Fatigue/Hydration	Communications	Multi Aircraft	Heavy Equipment	Helicopter Dip Sites	Organic Soils	Accountability																	
Sweat Farm	X	X	X	X	X	X	X	X	X	X	Lookouts posted, scout ahead for hazards, Known & identified escape routes Adequate safety zones identified Burn head lights, drive alert to traffic in the dusty conditions Scout ahead of tractor operations to avoid guy wires and poles Be aware of holiday weekend traffic	X	X	X	X	X	X		X																Make contact with assigned resources & know where they are. Attend Morning Briefing, Conduct tailgate briefings prior to beginning line assignment Refer to weather and safety message in IAP, post lookouts, stay away from dip sites, If you have questions-ASK! Drink adequate fluids, take frequent breaks.
Bugaboo Scrub II	X	X	X	X	X	X		X	X	X	Lookouts posted, scout ahead for hazards Known & identified escape routes Adequate safety zones identified Burn head lights, drive alert to traffic in the dusty conditions Be aware of holiday weekend traffic	X	X	X	X	X	X	X	X																Make contact with assigned resources & know where they are. Attend Morning Briefing, Conduct tailgate briefings prior to beginning line assignment Make contact with assigned resources and know where they are. Attend Morning Briefing, Tailgate briefings Refer to weather and safety message in IAP, post lookouts, stay away from dip sites, If you have questions-ASK! Drink adequate fluids, take frequent breaks.
Prairie Cox	X	X	X	X	X	X		X	X		Lookouts posted, scout ahead for hazards, Known & identified escape routes Adequate safety zones identified Burn head lights, drive alert to traffic in the dusty conditions Be aware of holiday weekend traffic	X	X	X	X	X	X	X	X																Make contact with assigned resources & know where they are. Attend Morning Briefing, Conduct tailgate briefings prior to beginning line assignment Refer to weather and safety message in IAP, post lookouts, stay away from dip sites, If you have questions-ASK! Drink adequate fluids, take frequent breaks. Stay out of burn and avoid footing in white ash
Knee-knocker	X			X	X	X		X	X		Lookouts posted, scout ahead for hazards , Known & identified escape routes Adequate safety zones identified Burn head lights, drive alert to traffic in the dusty conditions Be aware of holiday weekend traffic	X	X	X	X	X	X		X																Make contact with assigned resources & know where they are. Attend Morning Briefing, Conduct tailgate briefings prior to beginning line assignment Refer to weather and safety message in IAP, post lookouts, stay away from dip sites, If you have questions-ASK! Drink adequate fluids, take frequent breaks.
Roundabout	X			X	X	X		X	X		Lookouts posted, scout ahead for hazards , Known & identified escape routes Adequate safety zones identified Burn head lights, drive alert to traffic in the dusty conditions Be aware of holiday weekend traffic	X	X	X	X	X	X	X	X																Make contact with assigned resources & know where they are. Attend Morning Briefing, Conduct tailgate briefings prior to beginning line assignment Refer to weather and safety message in IAP, post lookouts, stay away from dip sites, If you have questions-ASK! Drink adequate fluids, take frequent breaks.
Prepared by (Name and Position) Michael Huffman- Safety Officer																																			





<b>DIVISION ASSIGNMENT LIST</b>			1. Branch <b>Sweat Farm</b>		2. Division/Group <b>A-B-C-D</b>			
3. Incident Name <b>Georgia Bay Complex</b>			4. Operational Period Date: <b>5-28-07</b> Time: <b>0700 - 1900</b> <b>DAY</b>					
5. Operations Personnel								
Operations Chief		<b>Lee Burwell</b> <b>John Nichols</b> <b>Jeff Burns (T)</b>		Division/ICT3		<b>David Lachapelle O-226 5/31</b> <b>912-218-7103 18*6748</b> <b>John Huscke (T)</b>		
Branch Director		<b>Buck Kline 18*1615</b>		Safety Officer		<b>Larry Miller O-38 5/28</b>		
6. Resources Assigned this Period								
Strike Team/Task Force/ Resource Designator		Leader / Name		Last Shift Date	Number Persons	Trans. Needed	Drop Off PT./Time	Pick Up PT./Time
<b>ST#1 TNS ST Eng T6 O-1026</b>		<b>Scott Smith</b>		5/31	11	N	0700	2000
TN Eng E-2733		Long/Cantrell		5/31		N	0700	2000
TN Eng E-2731		Harmond/Steele		5/31		N	0700	2000
TN Eng E-2730		Wooden/Brown		5/31		N	0700	2000
TN Eng E-2732		Hobbs/Kirby		5/31		N	0700	2000
<b>ST#2 GFC ST TP T3 E-2602.1</b>		<b>Randy Mosley</b>		5/29	4	N	0700	2000
TP GFC JD 650 E-2603		Taylor		5/29		N	0700	2000
TP GFC JD 650 E-2604		Harden		5/29		N	0700	2000
TP GFC JD 650 E-2605		Calhoun		5/29		N	0700	2000
7. Control Operations Patrol, mop up and mitigate as well respond to any threats posed by the fire.								
8. Special Instructions <b>Have constant communication with logging operation in fire area: Buck Rodenberry: 912-2764990 Linc 18*5865</b>								
9. Division/Group Communication Summary								
Function	Frequency	System	Channel	Function	Frequency	System	Channel	
Command		King NIFC		Air to Ground Federal	167.950 167.950/110.9 narrow band	King NIFC	Group 1 Ch. 12	
Tactical Div/Group	168.200	King NIFC	<b>Group 1 Ch. 11</b>	Air to Ground Georgia	159.390 Rx & Tx	King NIFC	Group 1 Ch. 13	
Prepared by (Resource Unit Leader) Pickens / Cheek / Register		Approved by (Planning Section Chief) /s/John Howard / Don Watson			Date May 27, 2007		Time 1900	

<b>DIVISION ASSIGNMENT LIST</b>				1. Branch <b>Sweat Farm</b>		2. Division/Group <b>I-J-K</b>		
3. Incident Name <b>Georgia Bay Complex</b>				4. Operational Period Date: <b>5-28-07</b> Time: <b>0700 - 1900</b> <b>DAY</b>				
5. Operations Personnel								
Operations Chief		<b>Lee Burwell</b> <b>John Nichols</b> <b>Jeff Burns (T)</b>		Division/ICT3		<b>Ron Swann O-264 6/3</b> <b>540-969-7474</b>		
Branch Director		<b>Buck Kline 18*1615</b>		Safety Officer		<b>Steve Snider O-186 5/31</b> <b>912-218-9308</b>		
6. Resources Assigned this Period								
Strike Team/Task Force/ Resource Designator		Leader / Name		Last Shift Date	Number Persons	Trans. Needed	Drop Off PT./Time	Pick Up PT./Time
WT Robbins Forestry		E-251 Frank Sallett		6/7	1	N	0700	1900
<b>ST# 18 ALS TP</b>		<b>Jason Berry O-1069</b>		6/2	1	N	0700	1900
T/P ALS T/P T3		E-1398 Williams / Barker		6/2	2	N	0700	1900
T/P ALS DOZ. T2		E-1399 Berry/Bartlett		6/2	2	N	0700	1900
T/P OK T/P T2		E-1468 Akard/Jacobs		6/1	2	N	0700	1900
T/P OK T/P T2		E-1469 Wayman/Tunnell		6/1	2	N	0700	1900
7. Control Operations Patrol, mop up and mitigate as well as respond to any threats posed by the fire.								
8. Special Instructio Contact for I/A dispatches is through Incident Communications and GFC District Office <b>LCES implemented by 1000 and notify OPS when completed</b>								
9. Division/Group Communication Summary								
Function	Frequency	System	Channel	Function	Frequency	System	Channel	
Command		King NIFC		Air to Ground Federal	167.950 167.950/110.9 narrow band	King NIFC	Group 1 Ch. 12	
Tactical Div/Group	169.900	King NIFC	<b>Group 1 Ch. 10</b>	Air to Ground Georgia	159.390 Rx & Tx	King NIFC	Group 1 Ch. 13	
Prepared by (Resource Unit Leader) Pickens / Cheek /Register			Approved by (Planning Section Chief) /s/John Howard / Don Watson			Date 5/27/07	Time 1900	

<b>DIVISION ASSIGNMENT LIST</b>			1. Branch <b>Sweat Farm</b>		2. Division/Group <b>H, WA</b>			
3. Incident Name <b>Georgia Bay Complex</b>			4. Operational Period Date: <b>5-28-07</b> Time: <b>0700 – 1900</b> <b>DAY</b>					
5. Operations Personnel								
Operations Chief		<b>Lee Burwell John Nichols Jeff Burns (T)</b>		Division/ICT3		<b>Paul Brna 6/05 O-295</b>		
Branch Director		<b>Buck Kline 18*1615</b>		Safety Officer		<b>Steve Snider O-186 5/31 912-218-9308</b>		
6. Resources Assigned this Period								
Strike Team/Task Force/ Resource Designator		Leader / Name		Last Shift Date	Number Persons	Trans. Needed	Drop Off PT./Time	Pick Up PT./Time
<b>TFLD</b>		<b>Stan Lovan</b>			1	N	0700	1900
<b>TF# 1 SC</b>		<b>B. Ballentine O-1049</b>		5/31	7	N	0700	1900
TP JD 700 SB	E-9006	Boyce/Porter		5/31		N	0700	1900
ENG T6 SCS	E-2737	Connally/Heitcamp		5/31		N	<b>OUT of SERVICE</b>	<b>OUT of SERVICE</b>
ENG T6 SCS	E-2738	Craig/ Folk		5/31		N	0700	1900
Timberline WAT1 #2		Goodman			1	N		
Tender 5500 gal. WAT1	E-118	Hawk / Black III			1	N		
WAT2Smith #1	E-119	Webb			1	N		
WAT2Smith #2	E-180	Smith			1	N		
Smith #3 WAT2	E-179	Smith			1			
Pump	E-120	Douglas			1	N		
<b>EMT</b>		<b>Lenny Throckmorton 804-467-9576</b>			1	N		
<b>EMT</b>		<b>Thomas Nails</b>			1	N		
7. Control Operations <b>Hold, Monitor, and Patrol division fire lines. Mop-up all returns.</b>								
8. Special Instructions <b>LCES implemented by 1000 and notify OPS when completed. Look out for Loggers!</b>								
9. Division/Group Communication Summary								
Function		System	Channel	Function	Frequency	System	Channel	
Command		King NIFC		Air to Ground Federal	<b>167.950 167.950/110.9 narrow band</b>	King NIFC	Group 1 Ch. 12	
Tactical Div/Group	169.900	King NIFC	<b>Group 1 TAC 8</b>	Air to Ground Georgia	159.390 Rx & Tx	King NIFC	Group1 Ch. 13	
Prepared by (Resource Unit Leader) Pickens / Cheek / Register		Approved by (Planning Sect. Ch.) /s/John Howard / Don Watson			Date May 27, 2007		Time 1900	

<b>DIVISION ASSIGNMENT LIST</b>			1. Branch <b>Sweat Farm</b>		2. Division/Group <b>WQ-WR</b>		
3. Incident Name <b>Georgia Bay Complex</b>			4. Operational Period Date: <b>5/28/07</b>		Time: <b>0700-1900</b> <b>DAY</b>		
5. Operations Personnel							
Operations Chief		<b>Lee Burwell/John Nichols Jeff Burns (T)</b>		Division/ICT3		<b>Richard Gonzalez 912-218-9352 18*1250</b>	
Branch Director		<b>Buck Kline 18*1615</b>		Safety Officer		<b>Andy Meadows 252-229-0161</b>	
6. Resources Assigned this Period							
Strike Team/Task Force/ Resource Designator	Resource	Leader / Name	Last Shift Date	Number Persons	Trans. Needed	Drop Off PT./Time	Pick Up PT./Time
<b>TFLD</b>	<b>O-317</b>	<b>Andrew Lane</b>	<b>6/6</b>	<b>1</b>	<b>N</b>		
AL DOZ T2	E-1110	Robinson / Taggart	5/31	2	N		
AL DOZ T2	E-1109	Chesser / Knighten	5/31	2	N		
<b>GFC ST # 10 TP T3</b>	<b>O-1114</b>	<b>Byron Haire</b>	<b>6/6</b>	<b>1</b>	<b>N</b>		
GFC TP T3	E-8103	Holloway	6/6	1	N		
GFC TP T3	E-2612	Hughes	6/6	1	N		
<b>GFC ST #16 T2</b>	<b>E-1343</b>	<b>Chris Roberts</b>	<b>6/10</b>	<b>1</b>	<b>N</b>		
GFC TP T2	E-1344	D. Mason	6/10	1	N		
GFC TP T2	E-1345	M. Jones	6/10	1	N		
GFC TP T2	E-1346	B. Anderson	6/10	1	N		
7. Control Operations							
8. Special Instructions Use Okefenokee Refuge North Repeater for backup Command Communications through Big Turnaround Dispatch if necessary.							
9. Division/Group Communication Summary							
Function	Frequency	System	Channel	Function	Frequency	System	Channel
Command		King NIFC		Air to Ground Federal	167.950 167.950/110.9 Narrow band	King NIFC	Group 1 Ch.12
Tactical Div/Group	168.775	King NIFC	<b>Group 1 Ch. 5</b>	Air to Ground Georgia IA	159.390	King NIFC	Group 1 Ch. 13
Prepared by (Resource Unit Leader) Pickens / Cheek / Register		Approved by (Planning Section Chief) /s/John Howard / Don Watson		Date May 27, 2007		Time 1900	

DIVISION ASSIGNMENT LIST		1. Branch <b>Sweat Farm Branch</b>		2. Division/Group <b>WW</b>			
3. Incident Name <b>Georgia Bay Complex</b>		4. Operational Period    Date: <b>5-28-07</b> Time: <b>0700 -1900</b> <b>DAY</b>					
5. <b>Operations Personnel</b>							
Operations Chief		Division Supervisor			Reed Callis		
Branch Director		Safety Officer					
6. <b>Resources Assigned this Period</b>							
Strike Team/Task Force/ Resource Designator	Leader / Name	Last Shift Date	Number Persons	Trans. Needed	Drop Off PT./Time	Pick Up PT./Time	
<b>unstaffed</b>							
7. Control Operations <b>DIVS will utilize equipment from the Breakout Group for structural triage</b>							
8. Special Instructions .							
9. <b>Division/Group Communication Summary</b>							
Function	Frequency	System	Channel	Function	Frequency	System	Channel
Command		King NIFC		Air to Ground Federal	167.950 167.950/110.9 narrow band	King NIFC	Group 1 Ch. 12
Tactical Div/Group	168.775	King NIFC	<b>Group 1 Ch. 8</b>	Air to Ground Georgia	159.390 Rx & Tx	King NIFC	Group1 Ch. 13
Prepared by (Resource Unit Leader) Pickens / Cheek / Register		Approved by (Planning Section Chief) /s/John Howard / Don Watson			Date May 27, 2007		Time 1900

<b>DIVISION ASSIGNMENT LIST</b>			1. Branch <b>Sweat Farm</b>		2. Division/Group <b>WX</b>			
3. Incident Name <b>Georgia Bay Complex</b>			4. Operational Period Date: <b>5-28-07</b> Time: <b>0700 - 1900</b> <b>DAY</b>					
5. Operations Personnel								
Operations Chief		<b>Lee Burwell John Nichols Jeff Burns (T)</b>		Division/ICT3		<b>Rick Witzke</b>		
Branch Director		<b>Buck Kline 18*1615</b>		Branch Safety Officer Division Safety Officer		<b>Ron Hamm 979 268 3782</b> <b>Steve Snider 912-218-9308 5/31</b>		
6. Resources Assigned this Period								
Strike Team/Task Force/ Resource Designator		Leader / Name		Last Shift Date	Number Persons	Trans. Needed	Drop Off PT./Time	Pick Up PT./Time
<b>ST#19 NC ST TPL T2 E-2660</b>		<b>Jonathon Young</b>		6/10	1	N	Swamp Church / 0700	Swamp Church / 1900
NC TPL T2 E-2662		Rees/ Moyer		6/10	2	N	Swamp Church / 0700	Swamp Church / 1900
NC TPL T2 E-2663		Marsh/ Haywood		6/10	2	N	Swamp Church / 0700	Swamp Church / 1900
NC TPL T2 E-2664		McDonald / Love		6/10	2	N	Swamp Church / 0700	Swamp Church / 1900
SC-FMF TP T2 E-125		Beasley / Avesing		5/31	2	N	Swamp Church / 0700	Swamp Church / 1900
7. Control Operations <b>Establish new control and Improve existing lines along the fire perimeter. Control escape fire that crosses fireline.</b>								
8. Special Instructions <b>LCES implemented by 1000 and notify OPS when completed.</b>								
9. Division/Group Communication Summary								
Function		System	Channel	Function	Frequency	System	Channel	
Command		King NIFC		Air to Ground Federal	167.950 167.950/110.9 narrow band	King NIFC	Group 1 Ch. 12	
Tactical Div/Group	168.050	King NIFC	<b>Group 1 CH 9</b>	Air to Ground Georgia	159.390 Rx & Tx	King NIFC	Group1 Ch. 13	
Prepared by (Resource Unit Leader) Pickens / Cheek / Register		Approved by (Planning Sect. Ch.) /s/John Howard / Don Watson			Date May 27, 2007		Time 1900	

<b>DIVISION ASSIGNMENT LIST</b>		1. Branch <b>Sweat Farm Branch</b>		2. Division/Group <b>WY</b>			
3. Incident Name <b>Georgia Bay Complex</b>		4. Operational Period    Date: <b>5-28-07</b> Time: <b>0700 - 1900</b> <b>DAY</b>					
<b>5. Operations Personnel</b>							
Operations Chief		Division Supervisor		<b>Aitor Bidaburu</b>			
Branch Director		Safety Officer					
<b>6. Resources Assigned this Period</b>							
Strike Team/Task Force/ Resource Designator	Leader / Name	Last Shift Date	Number Persons	Trans. Needed	Drop Off PT./Time	Pick Up PT./Time	
<b>unstaffed</b>							
7. Control Operations Monitor and Patrol fireline and perform structure triage							
8. Special Instructions <b>DIVS will utilize Breakout Group equipment, as available, to construct contingency fireline.</b> <b>Warning. Black Ankle Rd is impassable to vehicles. Do not use.</b>							
<b>9. Division/Group Communication Summary</b>							
Function	Frequency	System	Channel	Function	Frequency	System	Channel
Command		King NIFC		Air to Ground Federal	<b>167.950</b> <b>167.950/110.9</b> <b>narrow band</b>	King NIFC	Group 1 Ch. 12
				Air to Ground Georgia	<b>159.390</b> Rx & Tx		
Tactical Div/Group	168.600	King NIFC	<b>Group 1</b> <b>Ch. 7</b>	Air to Ground Georgia	<b>159.390</b> Rx & Tx	King NIFC	Group1 Ch. 13
Prepared by (Resource Unit Leader) Pickens / Cheek / Register		Approved by (Planning Section Chief) /s/John Howard / Don Watson		Date May 27, 2007		Time 1900	



<b>DIVISION ASSIGNMENT LIST</b>			1. Branch <b>Sweat Farm</b>		2. Division/Group <b>Z</b>		
3. Incident Name <b>Georgia Bay Complex</b>			4. Operational Period    Date: <b>5-28-07</b> Time: <b>0800 - 2000</b> <b>DAY</b>				
5.    Operations Personnel							
Operations Chief		<b>Lee Burwell</b> <b>John Nichols</b> <b>Jeff Burns (T)</b>		Division/ICT3			
Branch Director		<b>Buck Kline 18*1615</b>		Safety Officer			
6.    Resources Assigned this Period							
Strike Team/Task Force/ Resource Designator	Leader / Name	Last Shift Date	Number Persons	Trans. Needed	Drop Off PT./Time	Pick Up PT./Time	
<b>UNSTAFFED</b>							
7. Control Operations <b>All Control operations for the ZULU Division will be handled by the Manor Group.</b>							
8. Special Instructions <b>Have constant communication with logging operation in fire area: Buck Rodenberg: 912-2764990    Linc 18*5865</b>							
9.    Division/Group Communication Summary							
Function	Frequency	System	Channel	Function	Frequency	System	Channel
Command		King NIFC		Air to Ground Federal	167.950 167.950/110.9 narrow band	King NIFC	Group 1 Ch. 12
Tactical Div/Group	168.200	King NIFC		Air to Ground Georgia	159.390 Rx & Tx	King NIFC	Group 1 Ch. 13
Prepared by (Resource Unit Leader) Pickens / Cheek /Register		Approved by (Planning Section Chief) /s/John Howard / Don Watson		Date May 27, 2007		Time 1900	

<b>DIVISION ASSIGNMENT LIST</b>			1. Branch Sweat Farm		2. Division/Group <b>Prep Group</b> pg. 1 of 2		
3. Incident Name <b>Georgia Bay Complex</b>			4. Operational Period Date: <b>5/28/07</b>		Time: <b>0700-1900</b> <b>DAY</b>		
5. Operations Personnel							
Operations Chief	<b>Lee Burwell/John Nichols</b> <b>Jeff Burns</b>		Division/ICT3		<b>Mike Appling O-223 5/30</b> <b>Charles Arnold (T) O-1197 6/5</b>		
Branch Director	<b>Buck Kline 18*1615</b>		Safety Officer		<b>Andy Meadows 252-229-0161</b>		
6. Resources Assigned this Period							
Strike Team/Task Force/ Resource Designator	Leader / Name		Last Shift Date	Number Persons	Trans. Needed	Drop Off PT./Time	Pick Up PT./Time
<b>ST # 4 GFC ST TP T3</b>	<b>Jimmy Kennedy</b>		6/5	1	N	DP 305 / 0700	DP 305 / 1900
TP T3-GAS E-2848	Washington / Pate		6/5	2	N	DP 305 / 0700	DP 305 / 1900
TP T4-GAS E-2849	Sumner / Johnson		6/5	2	N	DP 305 / 0700	DP 305 / 1900
TP T4-GFC E-2850	Houston / Vance		6/5	2	N	DP 305 / 0700	DP 305 / 1900
DOZB O-343	Robert Raade		6/8	1	N	DP 305 / 0700	DP 305 / 1900
							DP 305 / 1900
<b>ST# 14 GFC STLP O-1101</b>	<b>Levy Rentz</b>		6/2	6	N	DP 305 / 0700	DP 305 / 1900
TP T3 -GFC Worth E-1465.2	Barwick		6/2	1	N	DP 305 / 0700	DP 305 / 1900
TP T3-GFC Turner 70 E-2079	Jackson		6/2	1	N	DP 305 / 0700	DP 305 / 1900
TP T3-GFC Grady 71 E-2080	Bulter		6/2	1	N	DP 305 / 0700	DP 305 / 1900
							DP 305 / 1900
<b>ST# 15 GFC ST Tractor Plow T3</b>	<b>Lonnie Calloway</b>		5/27	4	N	DP 305 / 0700	DP 305 / 1900
Evans 70 E-1199	Sykes		5/27		N	DP 305 / 0700	DP 305 / 1900
Jenkins 70 E-1198	Lane		5/27		N	DP 305 / 0700	DP 305 / 1900
Bulloch 70 E-1200	Wells		5/27		N	DP 305 / 0700	DP 305 / 1900
7. Control Operations Construct and improve firelines along the WW Division and WX division as directed by the OPS Chief or Branch Directed.							
8. Special Instructions Use Okefenokee Refuge North Repeater for backup Command Communications through Big Turnaround Dispatch if necessary.							
9. Division/Group Communication Summary							
Function	Frequency	System	Channel	Function	Frequency	System	Channel
Command		King NIFC		Air to Ground Federal	167.950 167.950/110.9 Narrow band	King NIFC	Group 1 Ch. 12
Tactical Div/Group	168.775	King NIFC	<b>Group 1 TAC 9</b>	Air to Ground Georgia IA	159.390	King NIFC	Group 1 Ch. 13
Prepared by (Resource Unit Leader) Pickens / Cheek / Register		Approved by (Planning Section Chief) /s/John Howard / Don Watson		Date May 27, 2007		Time 1900	

<b>DIVISION ASSIGNMENT LIST</b>				1. Branch <b>Sweat Farm</b>		2. Division/Group <b>Prep Group</b> pg. 2 of 2	
3. Incident Name <b>Georgia Bay Complex</b>				4. Operational Period Date: <b>5/28/07</b> Time: <b>0700-1900</b> <b>DAY</b>			
5. Operations Personnel							
Operations Chief	<b>Lee Burwell/John Nichols</b> <b>Jeff Burns</b>			Division/ICT3	<b>Mike Appling O-223 5/30</b> <b>Charles Arnold (T) O-1197 6/5</b>		
Branch Director	<b>Buck Kline 18*1615</b>			Safety Officer	<b>Andy Meadows 252-229-0161</b>		
6. Resources Assigned this Period							
Strike Team/Task Force/ Resource Designator	Leader / Name		Last Shift Date	Number Persons	Trans. Needed	Drop Off PT./Time	Pick Up PT./Time
<b>TFLD / DIVS(T) O-239</b>	<b>Alan Crouch</b>		5/31	1	N	DP 305 / 0800	DP 305 / 2000
DOZ Lee 1 (KG) E-1085	Harold			1	N	DP 305 / 0800	DP 305 / 2000
DOZ 1 Lee (KG) E-1193	Sermans			1	N	DP 305 / 0800	DP 305 / 2000
DOZ Timberline(KG)E-184	Lankford			1	N	DP 305 / 0800	DP 305 / 2000
DOZ- Hancock Doz1	Mike Hancock						
DOZ2 Timberline E-1084	Lashley			1	N	DP 305 / 0800	DP 305 / 2000
DOZ1-Biellings E-1146	J. Bielling			1	N	DP 305 / 0800	DP 305 / 2000
DOZ1-Rowland(KG)E-1086	Don Manning			1	N	DP 305 / 0800	DP 305 / 2000
DOZ1Rowland (KG)E-1087	Jamie			1	N	DP 305 / 0800	DP 305 / 2000
DOZ1 Hancock	Mike Hancock			1	N	DP 305 / 0800	DP 305 / 2000
<b>ST# 3GFC ST Engines T6 E-2659</b>	<b>Mike Purcell</b>		6/2	9	N	DP 305 / 0800	DP 305 / 2000
ENG-Pickens 86 E-1117	Davis/Keene		6/2		N	DP 305 / 0800	DP 305 / 2000
ENG-Paulding 86 E-1098	Cornett/Henderson		6/2		N	DP 305 / 0800	DP 305 / 2000
ENG-Heard 86 E-1015	Bryan/Reynolds		6/8		N	DP 305 / 0800	DP 305 / 2000
ENG-Upson 86 E-1132	Lindsey/Albritton		6/8		N	DP 305 / 0800	DP 305 / 2000
ENG-Murray 86 E-1022	Chase/Jackson		6/4	2	N	DP 305 / 0800	DP 305 / 2000
WAT2 N.Jenkins E-2858	Lane/Bragg		6/3	2	N	DP 305 / 0800	DP 305 / 2000
						DP 305 / 0800	DP 305 / 2000
7. Control Operations Prep assigned areas ahead of the fire. Assigned to WD,WX, WY, to improve and construct fireline near fire perimeter. <b>Warning. Black Ankle Rd is impassable to vehicles. Do not use.</b>							
8. Special Instructions Use Okefenokee Refuge North Repeater for backup Command Communications through Big Turnaround Dispatch if necessary. GFC Engine ST#3 use Group 1 TAC 8 for communication							
9. Division/Group Communication Summary							
Function	Frequency	System	Channel	Function	Frequency	System	Channel
Command		King NIFC		Air to Ground Federal	167.950 167.950/110.9 Narrow band	King NIFC	Group 1 Ch. 12
Tactical Div/Group	168.775	King NIFC	<b>Group 1 TAC 9</b>	Air to Ground Georgia IA	159.390	King NIFC	Group 1 Ch. 13
Prepared by (Resource Unit Leader) Pickens / Cheek / Register		Approved by (Planning Section Chief) /s/John Howard / Don Watson		Date May 27, 2007		Time 1900	

<b>DIVISION ASSIGNMENT LIST</b>				1. Branch <b>Sweat Farm</b>		2. Division/Group <b>Sweat Farm</b> <b>Break Out Group</b>		
3. Incident Name <b>Georgia Bay Complex</b>				4. Operational Period Date: <b>5-28-07</b> Time: <b>0700 – 1900</b> <b>DAY</b>				
5. Operations Personnel								
Operations Chief		<b>Lee Burwell</b> <b>John Nichols</b> <b>Jeff Burns (T)</b>		Division/ICT3		<b>Jonathan Wilson O-1132</b> <b>919-218-2954</b> <b>18*5929</b>		
Branch Director		<b>Buck Kline 18*1615</b>		Safety Officer				
6. Resources Assigned this Period								
Strike Team/Task Force/ Resource Designator		Leader / Name		Last Shift Date	Number Persons	Trans. Needed	Drop Off PT./Time	Pick Up PT./Time
<b>ST # 29</b>		<b>Brad Gregory</b>		6/8	1	N	DP 305 / 0700	DP 305 / 1900
TP GA-GAS T3	E-2844	Stephens		6/3	1	N	DP 305 / 0700	DP 305 / 1900
TP GA-GAS T3	E-2845	Brook		6/3	1	N	DP 305 / 0700	DP 305 / 1900
TP GA-GAS T3	E-2846	Baker		6/3	1	N	DP 305 / 0700	DP 305 / 1900
NCS DOZB	E-1105	Strider		5/31	1	N	DP 305 / 0700	DP 305 / 1900
TP-NCS T3	E-1106	Cook		5/31	1	N	DP 305 / 0700	DP 305 / 1900
							DP 305 / 0700	DP 305 / 1900
DOZB	O-299	James Hartley		5/31	1	N	DP 305 / 0700	DP 305 / 1900
DOZB	O-282	Marc LeClair		5/31	1	N	DP 305 / 0700	DP 305 / 1900
TFLD		Rick Kuykendall		6/6	1	N	DP 305 / 0700	DP 305 / 1900
TFLD(T)		Dave Grant		6/7	1	N	DP 305 / 0700	DP 305 / 1900
7. Control Operations <b>Position Equipment at DP 305 to Manage and Mitigate any Threats Posed by Uncontrolled Fires.</b>								
8. Special Instruction <b>LCES implemented by 1000 and notify OPS when completed.</b>								
9. Division/Group Communication Summary								
Function	Frequency	System	Channel	Function	Frequency	System	Channel	
Command		King NIFC		Air to Ground Federal	167.950 167.950/110.9 Narrow band	King NIFC	Group 1 Ch. 12	
Tactical Div/Group	168.200	King NIFC	<b>Group 1 Ch. 9</b>	Air to Ground Georgia IA	159.390	King NIFC	Group 1 Ch. 13	
Prepared by (Resource Unit Leader) Pickens / Cheek /Register		Approved by (Planning Section Chief) /s/John Howard / Don Watson			Date 5/27/07		Time 1900	

<b>DIVISION ASSIGNMENT LIST</b>			1. Branch <b>Sweat Farm</b>		2. Division/Group <b>Sweat Farm Break Out Group</b> pg. 2 of 2		
3. Incident Name <b>Georgia Bay Complex</b>			4. Operational Period Date: <b>5/28/07</b>		Time: <b>0700-1900</b> <b>DAY</b>		
5. Operations Personnel							
Operations Chief	<b>Lee Burwell/John Nichols Jeff Burns (T)</b>		Division/ICT3		<b>Jonathan Wilson O-1132 919-218-2954 18*5929</b>		
Branch Director	<b>Buck Kline</b>		Safety Officer				
6. Resources Assigned this Period							
Strike Team/Task Force/ Resource Designator	Leader / Name	Last Shift Date	Number Persons	Trans. Needed	Drop Off PT./Time	Pick Up PT./Time	
TFLD O-297	David North	5/31	1	N	DP 305 / 0800	DP 305 / 2000	
CHIP PVT			1	N	DP 305 / 0800	DP 305 / 2000	
WT Robbins			1	N	DP 305 / 0800	DP 305 / 2000	
7. Control Operations <b>Control operations and locations will be assigned by Division Supervisors as needed.</b>							
8. Special Instructions Remain in communications with resources and contractor. Contractor's link #: 18*14052							
9. Division/Group Communication Summary							
Function	Frequency	System	Channel	Function	Frequency	System	Channel
Command		King NIFC		Air to Ground Federal	167.950 167.950/110.9 Narrowband	King NIFC	Group 1 Ch. 12
Tactical Div/Group	168.200	King NIFC	<b>Group 1 Ch. 9</b>	Air to Ground Georgia IA	159.390	King NIFC	Group 1 Ch. 13
Prepared by (Resource Unit Leader) Pickens / Cheek /Register		Approved by (Planning Section Chief) /s/John Howard / Don Watson		Date May 27, 2007		Time 1900	

<b>DIVISION ASSIGNMENT LIST</b>				1. Branch <b>Sweat Farm</b>		2. Division/Group <b>MANOR GROUP</b>	
3. Incident Name <b>Georgia Bay Complex</b>				4. Operational Period Date: <b>5-28-07</b> Time: <b>0700 – 1900</b> <b>DAY</b>			
5. Operations Personnel							
Operations Chief		<b>Lee Burwell John Nichols Jeff Burns (T)</b>		Division/ICT3		<b>Greg Arkle 912-218-7726 18*4203</b>	
Branch Director				Safety Officer		<b>Larry Miller O-38 5/28 912-218-9355</b>	
6. Resources Assigned this Period							
Strike Team/Task Force/ Resource Designator		Leader / Name	Last Shift Date	Number Persons	Trans. Needed	Drop Off PT./Time	Pick Up PT./Time
<b>TFLD</b>		<b>Andrew Lane</b>	6/7	1	N	Swamp Church 0700	Manor 1900
<b>ST# 17</b>							
NMF Engine T6 E-56		Roybal	6/8	3	N	Swamp Church 0700	Manor 1900
NMF Eng #236 T6 E-60		Housler	6/5	3	N	Swamp Church 0700	Manor 1900
7. Control Operations Position Equipment to Manage and Mitigate any Threats Posed by Uncontrolled Fires.							
8. Special Instructions <b>Report to Swamp Baptist Ch.</b> <b>Warning Black Ankle Rd is Impassable . Do not use.</b> <b>LCES implemented by 1000 and notify OPS when completed.</b>							
9. Division/Group Communication Summary							
Function	Frequency	System	Channel	Function	Frequency	System	Channel
Command		King NIFC		Air to Ground Federal	167.950 167.950/110.9 narrow band	King NIFC	Group 1 Ch 12
Tactical Div/Group	168.200	King NIFC	<b>Group 1 Ch. 11</b>	Air to Ground Georgia IA	159.390 Rx & Tx	King NIFC	Group 1 Ch. 13
Prepared by (Resource Unit Leader) Pickens / Cheek /Register			Approved by (Planning Section Chief) /s/John Howard / Don Watson			Date May 27, 2007	Time 1900

<b>DIVISION ASSIGNMENT LIST</b>			1. Branch <b>Sweat Farm</b>		2. Division/Group <b>Structure Protection Group #1</b>		
3. Incident Name <b>Georgia Bay Complex</b>			4. Operational Period Date: <b>5-28-07</b> Time: <b>0700 - 1900 DAY</b>				
5. Operations Personnel							
Operations Chief		<b>Lee Burwell John Nichols Jeff Burns (T)</b>		Division/ICT3		<b>Dennis Keen - Ware Co. Fire Dept. 912-337-3414 Linc - 1*44*977</b>	
Branch Director				Safety Officer			
6. Resources Assigned this Period							
Strike Team/Task Force/ Resource Designator		Leader / Name	Last Shift Date	Number Persons	Trans. Needed	Drop Off PT./Time	Pick Up PT./Time
GA DOC TF		Rick Huggins 11*3204 cell 770-330-7246		1	N	Diversion Center0700	Diversion Center1900
		Don Shugart 54*240		1	N	Diversion Center0700	Diversion Center1900
		Larry Brown 11*32063		1	N	Diversion Center0700	Diversion Center1900
GDC Wilcox T1		Culpepper		5	N	Diversion Center0700	Diversion Center1900
GDC Montgomery Rescue		Helms/Sharp		6	N	Diversion Center0700	Diversion Center1900
GDC Dooly T6		Hudson		3	N	Diversion Center0700	Diversion Center1900
GDC Dooly WT				2	N	Diversion Center0700	Diversion Center1900
GDC Wayne T3		Horton		2	N	Diversion Center0700	Diversion Center1900
GDC Wayne T6				2	N	Diversion Center0700	Diversion Center1900
GDC Wayne WT				2	N	Diversion Center0700	Diversion Center1900
GSP T3		Rogers		3	N	Diversion Center0700	Diversion Center1900
GSP Rescue				3		Diversion Center0700	Diversion Center1900
GDC West GA. H/C		Roberts		8	N	Diversion Center0700	Diversion Center1900
GDC Lee Arendale H/C		Yearwood		10	N	Diversion Center0700	Diversion Center1900
GDC Paulding H/C		Cox/Foley		8	N	Diversion Center0700	Diversion Center1900
7. Control Operations Provide population/structure/infrastructure protection and preparation where needed. Continue to Gather GIS Data. Provide Mop Up around structures and support Division Mop Up. Coordinate with Red Team where applicable. Provide Firewise and Fire Prevention information to the public. Coordinate with DIVS.							
8. Special Instructions <b>Way Cross Structures GEMA 40 Southern Linc 18*11049</b> <b>Jessie Jordan Ware Co. FD 44*4042 912-281-6541</b> <b>Ware County Fuel Tender -- Tony Leverett 912-288-3295</b> <b>Dennis Keen Ware Co. Fire Dept. - 912-337-3414 Linc - 1*44*977</b> <b>Clinch County Fire/EMA - Jesse Booth 18* 25*255 229-356-2348</b>  <b>LCES implemented by 1000 and notify OPS when completed.</b>							
9. Division/Group Communication Summary							
Function	Frequency	System	Channel	Function	Frequency	System	Channel
Command		King NIFC		Air to Ground Federal	167.950 167.950/110.9 narrow band	King NIFC	Group 1 Ch 12
Tactical Div/Group	154.280	King NIFC	Group1 Ch. 3	Air to Ground Georgia	159.390 Rx & Tx	King NIFC	Group 1 Ch. 13
Prepared by (Resource Unit Leader) Pickens / Cheek / Register		Approved by (Planning Section Chief) /s/John Howard / Don Watson			Date 5/27/07		Time 1900

<b>DIVISION ASSIGNMENT LIST</b>				1. Branch <b>Sweat Farm</b>		2. Division/Group <b>Night Operations Sweat Farm</b>		
3. Incident Name <b>Georgia Bay Complex</b>				4. Operational Period Date: <b>5-28-07</b> Time: <b>1800 – 0600</b> <b>NIGHT</b>				
5. Operations Personnel								
Operations Chief		<b>Lee Burwell John Nichols Jeff Burns (T)</b>		Division		<b>Heath Morton 6/3</b>		
Branch Director		<b>Buck Kline 18*1615</b>		Safety Officer		<b>Pete Stewart 912-218-8965 5/27 Mark Wellen</b>		
6. Resources Assigned this Period								
Strike Team/Task Force/ Resource Designator		Leader / Name		Last Shift Date	Number Persons	Trans. Needed	Drop Off PT./Time	Pick Up PT./Time
<b>ST# 21 GFC ST Tractor Plow T3 E-2714</b>		<b>Alfred Lucas O-1005</b>		5/28	4	N	DP 305	DP 305
GFC TPL E-2694 O-1006		A. Smith		5/28		N	DP 305	DP 305
GFC TPL E-2696 O-1008		C. Thomas		5/28		N	DP 305	DP 305
GFC TPL E-2695 O-1007		D. Veal		5/28		N	DP 305	DP 305
<b>ST# 20 T6 TFLD O-345</b>		<b>Victor Morfin</b>		6/8	6	N	DP 305	DP 305
TX PVT Engine E-44		Sims		5/30		N	DP 305	DP 305
TX PVT #701 Engine E-45		McInis / McInis		5/30		N	DP 305	DP 305
TXF #31 Engine E-46		Neill/Chumley/Martin		6/3		N	DP 305	DP 305
TX PVT Engine T6 E-47					2	N	DP 305	DP 305
Grady Co. WAT2 E-2601		Freeman		6/7	2	N	DP 305	DP 305
7. Control Operations Patrol and Mop Up West of Swamp Rd. Provide Structure Protection as needed. Coordinate with DIVS								
8. Special instructions <b>Warning ; Black Ankle Rd is impassable. Do not use. Through ICP Communication and Waycross Communication</b>								
9. Division/Group Communication Summary								
Function	Frequency	System	Channel	Function	Frequency	System	Channel	
Command		King NIFC		Air to Ground Federal	167.950 167.950/110.9 Narrow band	King NIFC	Group 2 Ch. 12	
Tactical Div/Group	168.600	King NIFC	<b>Group 1 Ch. 7</b>	Air to Ground Georgia IA	159.390	King NIFC	Group 2 Ch. 13	
Prepared by (Resource Unit Leader) Pickens / Cheek /Register			Approved by (Planning Section Chief) /s/John Howard / Don Watson			Date May 27, 2007		Time 1900



<b>DIVISION ASSIGNMENT LIST</b>			1. Branch <b>Cox Prairie Branch</b>		2. Division/Group <b>WE, WF, WG</b>		
3. Incident Name <b>Georgia Bay Complex</b>			4. Operational Period Date: <b>5/28/07</b>		Time: <b>0700-1900</b> <b>DAY</b>		
5. Operations Personnel							
Operations Chief	<b>Lee Burwell/John Nichols Jeff Burns (T)</b>		Division/ICT3		<b>WE - Phillip Wall 6/5 252-229-7135</b>		
Branch Director	<b>Brantley McManus</b>		Safety Officer		<b>Alan Alsobrook</b>		
6. Resources Assigned this Period							
Strike Team/Task Force/ Resource Designator	Leader / Name		Last Shift Date	Number Persons	Trans. Needed	Drop Off PT./Time	Pick Up PT./Time
<b>GFC ST 24 STPL T3</b>	<b>Randy Teal</b>		<b>6/4</b>	<b>1</b>	<b>N</b>		
GFC TP T3	E-2048	Griglen	6/4	1	N		
GFC TP T3	E-2047	Stone	6/4	1	N		
GFC TP T3	E-1047	Christopher	6/4	1	N		
7. Control Operations Prep pine plantation, tater patching, and tie in with Bugaboo Brand Director for further needs.							
8. Special Instructions Be aware of column(s) that may develop in Okefenokee Swamp and pass along to adjoining divisions.  <b>Warning. Black Ankle is impassable to vehicle traffic. Do not use.</b>							
9. Division/Group Communication Summary							
Function	Frequency	System	Channel	Function	Frequency	System	Channel
Command		King NIFC		Air to Ground Federal	167.950 167.950/110.9 Narrowband	King NIFC	Group 1 Ch. 12
Tactical Div/Group	168.050	King NIFC	<b>Group 1 Ch 11</b>	Air to Ground Georgia IA	159.390	King NIFC	Group 1 Ch. 13
Prepared by (Resource Unit Leader) Pickens / Cheek /Register		Approved by (Planning Section Chief) /s/John Howard / Don Watson		Date May 27, 2007		Time 1900	

<b>DIVISION ASSIGNMENT LIST</b>				1. Branch <b>Cox Praire Branch</b>		Division/Group <b>WH</b> page 1 of 3		
3. Incident Name <b>Georgia Bay Complex</b>				4. Operational Period Date: <b>5/28/07</b>		Time: <b>0800-2000</b> <b>DAY</b>		
5. Operations Personnel								
Operations Chief		<b>Lee Burwell John Nichols Jeff Burns (T)</b>		Division Supervisor		<b>Joe Hessel Brad Reed (T) O-318</b>		
Branch Director		<b>Brantley McManus</b>		Branch Safety Officer Division Safety Officer		<b>Keith Jenkins 478-550-2991 Harry Kepler 912-218-8325</b>		
6. Resources Assigned this Period								
Strike Team/Task Force/ Resource Designator		Leader / Name		Last Shift Date	Number Persons	Trans. Needed	Drop Off PT./Time	Pick Up PT./Time
<b>TFLD O-334</b>		<b>Norma May</b>		6/8	1	N	Fargo/0700	Fargo/1900
SKID- Robbins Skidgine E-252					1	N	Fargo/0700	Fargo/1900
SKID- Robbins Skidgine E-253					1	N	Fargo/0700	Fargo/1900
SKID- Robbins Skidgine E-254					1	N	Fargo/0700	Fargo/1900
WT Robbins 6000 gal. E-251					1	N	Fargo/0700	Fargo/1900
<b>ST #23</b>		<b>Justin Erickson</b>			1	N	Fargo/0700	Fargo/1900
Support Fire Eng. 6 E-12		Zuehlke ( R &Rtill 5/27)		5/24	2	N	Fargo/0700	Fargo/1900
PVT Smokey Mtn. Eng6 E-43		Bartlett / MaMahon			2	N	Fargo/0700	Fargo/1900
GFC Eng.5 E-1016		Robinson/Moore		5/28	2	N	Fargo/0700	Fargo/1900
GFC Eng.6 E-1021		Williams / Josey		5/28	2	N	Fargo/0700	Fargo/1900
8. Special Instructions See communications plan for closest Command Repeater to Division. Division and STPS keep Branch Director informed of status in progress. <b>North Side of River use TAC Ch. 5</b> <b>South Side of River use TAC Ch. 10</b>								
9. Division/Group Communication Summary								
Function	Frequency	System	Channel	Function	Frequency	System	Channel	
Command		King NIFC		Air to Ground Federal	167.950 167.950/110.9 Narrow band	King NIFC	Group 1 Ch. 12	
Tactical Div/Group	159.285	King NIFC	<b>Group 2 Ch 10</b>	Air to Ground Georgia IA	159.390	King NIFC	Group 1 Ch. 13	
Prepared by (Resource Unit Leader) Pickens / Cheek /Register		Approved by (Planning Section Chief) /s/John Howard / Don Watson			Date May 27, 2007		Time 1900	

<b>DIVISION ASSIGNMENT LIST</b>			1. Branch <b>Bugaboo Scrub II</b>		2. Division/Group <b>WH</b> page 2 of 3		
3. Incident Name <b>Georgia Bay Complex</b>			4. Operational Period Date: <b>5/28/07</b>		Time: <b>0800-2000</b> <b>DAY</b>		
5. Operations Personnel							
Operations Chief	<b>Lee Burwell John Nichols Jeff Burns (T)</b>		Division Supervisor		<b>Joe Hessel Brad Reed (T) O-318</b>		
Branch Director	<b>Brantley McManus</b>		Branch Safety Officer Division Safety Officer		<b>Keith Jenkins 478-550-2991 Harry Kepler 912-218-8325</b>		
6. Resources Assigned this Period							
Strike Team/Task Force/ Resource Designator	Leader / Name		Last Shift Date	Number Persons	Trans. Needed	Drop Off PT./Time	Pick Up PT./Time
<b>TFLD O-346</b>	<b>William Emery</b>		5/30	1	N	Fargo/0800	Fargo/2000
<b>ST# 7 LAS ST ENG</b>	<b>Jay Meadows O-1093</b>		6/1	1	N	Fargo/0800	Fargo/2000
ENG-LAS Engine T6 E-1074	Moseley/Carter		6/1	2	N	Fargo/0800	Fargo/2000
ENG-LAS Engine T6 E-1071	Wager/Holmes		6/1	2	N	Fargo/0800	Fargo/2000
ENG-LAS Engine T6 E-1072	West/Tichy		6/1	2	N	Fargo/0800	Fargo/2000
<b>ST# 8 LAS ST ENG T6</b>	<b>H. Childress O-1092</b>		6/1	1	N	Fargo/0800	Fargo/2000
ENG LAS Engine E-1075	Wright/Bolyer		6/1	2	N	Fargo/0800	Fargo/2000
ENG LAS Engine E-1070	Mango/Hilton		6/1	2	N	Fargo/0800	Fargo/2000
ENG LAS Engine E-1073	Duckett/Martin		6/1	2	N	Fargo/0800	Fargo/2000
ENG LAS Engine E-1076	Polk/Hughes		6/1	2	N	Fargo/0800	Fargo/2000
7. Control Operations This includes Stephen Foster State Park. Assure hose line is in place and working. Assist with controlling fire as it progresses along the peninsula.							
9. Special Instructions See communications plan for closest Command Repeater to Division. Division and STPS keep Branch Director informed of status in progress.  <b>North Side of River use TAC Ch. 5</b> <b>South Side of River use TAC Ch. 10</b>							
9. Division/Group Communication Summary							
Function	Frequency	System	Channel	Function	Frequency	System	Channel
Command		King NIFC		Air to Ground Federal	167.950 167.950/110.9 Narrow band	King NIFC	Group 1 Ch. 12
Tactical Div/Group	159.285	King NIFC	<b>Group 2 Ch 10</b>	Air to Ground Georgia IA	159.390	King NIFC	Group 1 Ch. 13
Prepared by (Resource Unit Leader) Pickens / Cheek / Register		Approved by (Planning Section Chief) /s/John Howard / Don Watson		Date May 27, 2007		Time 1900	

<b>DIVISION ASSIGNMENT LIST</b>			1. Branch <b>Bugaboo Scrub II</b>		2. Division/Group <b>WH</b> page 3 of 3		
3. Incident Name <b>Georgia Bay Complex</b>			4. Operational Period Date: <b>5/28/07</b>		Time: <b>0700-2000</b> <b>DAY</b>		
5. Operations Personnel							
Operations Chief		<b>Lee Burwell</b> <b>John Nichols</b> <b>Jeff Burns (T)</b>		Division Supervisor		<b>Joe Hessel</b> <b>Brad Reed (T) O-318</b>	
Branch Director		<b>Brantley McManus</b>		Branch Safety Officer		<b>Keith Jenkins 478-550-2991</b>	
				Division Safety Officer		<b>Harry Kepler 912-218-8325</b>	
6. Resources Assigned this Period							
Strike Team/Task Force/ Resource Designator		Leader / Name		Last Shift Date	Number Persons	Trans. Needed	Drop Off PT./Time
<b>North Carolina Strike Team STPL</b>		<b>Scott Sheets O-5216</b> <b>ENG# 750 T6 E-5200</b>			1	No	Fargo/0800
JD 750 DOZ2 E-5194		Luther Mel Guthrie O-5220			1	No	Fargo/0800
CAT D5H DOZ3 E-5195					1	No	Fargo/0800
CAT D5H DOZ3E-5193		Ricky Ballece O-5219			1	No	Fargo/0800
Engine Type 6 ENG# E-		Debbie Brown O-5217			1	No	Fargo/0800
Engine Type 6 ENG# E-		Michael Spencer O-5196			1	No	Fargo/0800
Engine Type 6 ENG# E-					1	No	Fargo/0800
<b>ST #25 LA-LAS O-661</b>		<b>Mike Smith</b>		6/6	5	N	Fargo/0800
LA T/P T2 E-1102		Cornett / Weatherford		06/03	2	N	Fargo/0800
LA T/P T2 E-1103		Marcantel / Bass		06/03	2	N	Fargo/0800
8. Control Operations This includes Stephen Foster State Park. Assure hose line is in place and working. Assist with controlling fire as it progresses along the peninsula.							
10. Special Instructions See communications plan for closest Command Repeater to Division. Division and STPS keep Branch Director informed of status in progress. <b>North Side of River use TAC Ch. 5</b> <b>South Side of River use TAC Ch. 10</b>							
9. Division/Group Communication Summary							
Function	Frequency	System	Channel	Function	Frequency	System	Channel
Command		King NIFC		Air to Ground Federal	167.950 167.950/110.9 Narrow band	King NIFC	Group 1 Ch. 12
Tactical Div/Group	159.285	King NIFC	<b>Group 2 Ch 10</b>	Air to Ground Georgia IA	159.390	King NIFC	Group 1 Ch. 13
Prepared by (Resource Unit Leader)		Approved by (Planning Section Chief)			Date		Time
Pickens / Cheek / Register		/s/John Howard / Don Watson			May 27, 2007		1900

<b>DIVISION ASSIGNMENT LIST</b>				1. Branch <b>Bugaboo Scrub II</b>		Division/Group <b>WI - WJ</b>	
3. Incident Name <b>Georgia Bay Complex</b>				4. Operational Period Date: <b>5/28/07</b>		Time: <b>0700-1900</b> <b>DAY</b>	
5. Operations Personnel							
Operations Chief		<b>Lee Burwell John Nichols Jeff Burns (T)</b>		Division Supervisor STPS		<b>Ricky Adkins 912-218-9307 18*10062 Gary Waters</b>	
Branch Director		<b>Amery Wells</b>		Branch Safety Officer Division Safety Officer		<b>Keith Jenkins 478-550-2991 Harry Kepler 912-218-8325</b>	
6. Resources Assigned this Period							
Strike Team/Task Force/ Resource Designator		Leader / Name		Last Shift Date	Number Persons	Trans. Needed	Pick Up PT./Time
<b>ST #9 STEN O-336</b>		<b>Don Thomas</b>		6/7	1	N	
ENG-CA-INF Eng.32 T3 E-75		Dave Nelson			5	N	
ENG- WYRAD Eng 392 T6 E-99		T.J. Murry			3	N	
ENG- WYRSD Eng 493 T6 E-246		Derrick Youngerman			3	N	
WT-GA DOT+1 Supervisor					2	N	
<b>ST #25 LA-LAS O-661</b>		<b>Mike Smith</b>		6/6	5	N	
LA T/P T2 E-1102		Cornett / Weatherford		06/03		N	
LA T/P T2 E-1103		Marcantel / Bass		06/03		N	
7. Control Operations Control operations and locations will be assigned by OPS at the 0800 Briefing.							
8. Special Instructions See communications plan for closest Command Repeater to Division. Division and STPS keep Branch Director informed of status in progress. <b>North Side of River use TAC Ch. 5</b> <b>South Side of River use TAC Ch. 10</b>							
9. Division/Group Communication Summary							
Function	Frequency	System	Channel	Function	Frequency	System	Channel
Command		King NIFC		Air to Ground Federal	167.950 167.950/110.9 Narrow band	King NIFC	Group 1 Ch. 12
Tactical Div/Group	159.285	King NIFC	<b>Group 2 Ch 5</b>	Air to Ground Georgia IA	159.390	King NIFC	Group 1 Ch. 13
Prepared by (Resource Unit Leader) Pickens / Cheek /Register		Approved by (Planning Section Chief) /s/John Howard / Don Watson		Date May 27, 2007		Time 1900	

<b>DIVISION ASSIGNMENT LIST</b>				1. Branch <b>Bugaboo Scrub II</b>		2. Division/Group <b>WK-WM</b>		
3. Incident Name <b>Georgia Bay Complex</b>				4. Operational Period Date: <b>5/28/07</b>		Time: <b>0700-1900</b> <b>DAY</b>		
5. Operations Personnel								
Operations Chief		<b>Lee Burwell/John Nichols Jeff Burns (T)</b>		Division/ICT3		<b>Jaymes Smith 5/28 O-286 Larry Sears 6/9 O-380</b>		
Branch Director		<b>Amery Wells</b>		Branch Safety Officer Division Safety Officer		<b>Keith Jenkins 478-550-2991 John Orton 912-218-4958</b>		
6. Resources Assigned this Period								
Strike Team/Task Force/ Resource Designator		Leader / Name		Last Shift Date	Number Persons	Trans. Needed	Drop Off PT./Time	Pick Up PT./Time
<b>STPL O-352</b>		<b>Robert Lutrell</b>		6/10	1	N	Fargo/0700	Fargo/1900
T/P -TxTxs T2 E-1452		Burch / Williams		5/30	2	N	Fargo/0700	Fargo/1900
<b>ST # 22 STEN O-584</b>		<b>Terry Quigley</b>		6/10	1	N	Fargo/0700	Fargo/1900
ENG-Platte Canyon Z T3 E-65		Laurion / McDonald / Milligan		6/8	3	N	Fargo/0700	Fargo/1900
ENG T6 COS #312 E-67		Roetker/McConnell		6/9	2	N	Fargo/0700	Fargo/1900
WT- GA DOT					1	N	Fargo/0700	Fargo/1900
WT- GA DOT					1	N	Fargo/0700	Fargo/1900
<b>ST #5</b>		<b>TFLD Mike Schmidt O-289</b>		5/31		N	Fargo/0700	Fargo/1900
ENG- WY-CPS T6 E-101		Finn/Oden/Ratcliff		6/3	3	N	Fargo/0700	Fargo/1900
ENG-AZ-Brush T6 E-97		Albright/Price/Blake		6/7	3	N	Fargo/0700	Fargo/1900
ENG-CO-COS T6 E-94		Seeley/Fitzpatrick/Mc Curry		6/9	3	N	Fargo/0700	Fargo/1900
ENG- Platte Canyon T6 E-95		Sugaski/Reese/ Linnelan		6/8	3	N	Fargo/0700	Fargo/1900
ENG-AZ-AZS T6 E-96		Myers/Penrod/McNeil		6/3	3	N	Fargo/0700	Fargo/1900
7. Control Operations Patrol and mop up along fire line.								
8. Special Instructions Keep Branch Director informed of status in progress.								
9. Division/Group Communication Summary								
Function	Frequency	System	Channel	Function	Frequency	System	Channel	
Command		King NIFC		Air to Ground Federal	167.950 167.950/110.9 Narrow band	King NIFC	Group 1 Ch. 12	
Tactical Div/Group	164.1375	King NIFC	<b>Group 1 Ch. 8</b>	Air to Ground Georgia IA	159.390	King NIFC	Group 1 Ch. 13	
Prepared by (Resource Unit Leader) Pickens / Cheek / Register		Approved by (Planning Section Chief) /s/John Howard / Don Watson		Date May 27, 2007		Time 1900		

<b>DIVISION ASSIGNMENT LIST</b>				1. Branch <b>Bugaboo Scrub</b>		2. Division/Group <b>Swing</b>	
3. Incident Name <b>Georgia Bay Complex</b>				4. Operational Period Date: <b>5-28-07</b>		Time: <b>1200 - 2400</b>	
5. Operations Personnel							
Operations Chief		<b>Lee Burwell John Nichols Jeff Burns (T)</b>		Division/ICT3		<b>Pete Villa O-203 6/1 912-218-8226 18*4523</b>	
Branch Director		<b>Amery Wells</b>		Safety Officer			
6. Resources Assigned this Period							
Strike Team/Task Force/ Resource Designator		Leader / Name	Last Shift Date	Number Persons	Trans. Needed	Drop Off PT./Time	Pick Up PT./Time
<b>TF-2 STEN T6 Engine O-682</b>		<b>Mark Stinson</b>	<b>6/6</b>	<b>1</b>	<b>N</b>	DP 305 / 1200	DP 305 / 2400
Eng 4460 E-1181		Sinderud/ Bera	6/6	1	N	DP 305 / 1200	DP 305 / 2400
GA-GAS ENG T6 E-2835		Fortenberry/Hulsey	6/6	2	N	DP 305 / 1200	DP 305 / 2400
GA-GAS ENG T6 E-2834		Sweatman/Sisk	6/6	2	N	DP 305 / 1200	DP 305 / 2400
MN PVT #6 Engine E-26		G. Rock-C. Tucker	6/1	2	N	DP 305 / 1200	DP 305 / 2400
<b>TF-7 T/P E-113.3</b>		<b>Raymond Uballe</b>	<b>6/1</b>	<b>1</b>	<b>N</b>	DP 305 / 1200	DP 305 / 2400
TX-TXS T/P T4 E-113		Sides/Halloquist	6/1	2	N	DP 305 / 1200	DP 305 / 2400
TX-TXS T/P T4 E-112		Cooke Hartstein	6/7 6/1	2	N	DP 305 / 1200	DP 305 / 2400
TX-TXS T/P T4 E-114		Witt/Sunda	6/1	2	N	DP 305 / 1200	DP 305 / 2400
7. Control Operations  <b>Coordinate Division assignments with Branch Director and DIVS</b>							
8. Special Instructions <b>Remainder of resources assigned to Fargo will assist with structure protection and related activities; Clinch County Fire/EMA - Jesse Booth 25*255 919-482-3700</b>							
9. Division/Group Communication Summary							
Function	Frequency	System	Channel	Function	Frequency	System	Channel
Command		King NIFC		Air to Ground Federal	167.950 167.950/110.9 Narrow band	King NIFC	Group 1 Ch. 12
Tactical Div/Group		King NIFC	<b>Group 2 Ch 6</b>	Air to Ground Georgia IA	159.390	King NIFC	Group 1 Ch. 13
Prepared by (Resource Unit Leader) Pickens / Cheek /Register		Approved by (Planning Section Chief) /s/John Howard / Don Watson		Date May 27, 2007		Time 1900	

<b>DIVISION ASSIGNMENT LIST</b>				1. Branch <b>Bugaboo Scrub II</b>		2. Division/Group <b>Night Shift Bugaboo</b>		
3. Incident Name <b>Georgia Bay Complex</b>				4. Operational Period Date: <b>5-28-07</b>		Time: <b>1800 -0600</b> <b>NIGHT</b>		
5. Operations Personnel								
Operations Chief		<b>Lee Burwell John Nichols Jeff Burns (T)</b>		Division/ICT3		<b>Doug Mattox O-221 6/4</b>		
Branch Director		<b>Amery Wells</b>		Branch Safety Officer Division Safety Officer		<b>Keith Jenkins 478-550-2991 Pete Stewart / Mark Wellen</b>		
6. Resources Assigned this Period								
Strike Team/Task Force/ Resource Designator		Leader / Name		Last Shift Date	Number Persons	Trans. Needed	Drop Off PT./Time	Pick Up PT./Time
<b>S/T 28 STEN O-1240</b>		<b>George Barbee</b>		6/8	1	N	Fargo 1800	Fargo 0600
LA ENG T6 E-2841		Hall/Dunn		5/31	2	N	Fargo 1800	Fargo 0600
VA-VAF ENG T6 E-4		Ramey (out of service)		5/26	3	N	Fargo 1800	Fargo 0600
CO-PSF ENG T6 E-3		Howard/Banueios / Brogan		6/8	3	N	Fargo 1800	Fargo 0600
<b>GAS STPL O-1232</b>		<b>Royce Davis</b>		6/7	1	N	Fargo 1800	Fargo 0600
TP T3 Mitchell 61 E-2881		Baird		6/7	1	N	Fargo 1800	Fargo 0600
TP T3 Seminole 71 E-2880		Green		6/7	1	N	Fargo 1800	Fargo 0600
TP T3 Brooks 72 E-2882		Hugleso		6/7	1	N	Fargo 1800	Fargo 0600
7. Control Operations								
Patrol and Mop Up West of Swamp Rd. Provide Structure Protection as needed. Coordinate with DIVS								
8. Special Instructions								
<b>Remainder of resources assigned to Fargo will assist with structure protection and related activities; Clinch County Fire/EMA – Jesse Booth 25*255 919-482-3700</b>								
9. Division/Group Communication Summary								
Function	Frequency	System	Channel	Function	Frequency	System	Channel	
Command		King NIFC		Air to Ground Federal	167.950 167.950/110.9 Narrow band	King NIFC	Group 1 Ch. 12	
Tactical Div/Group	168.775	King NIFC	<b>Group 2 CH 9</b>	Air to Ground Georgia IA	159.390	King NIFC	Group 1 Ch. 13	
Prepared by (Resource Unit Leader) Pickens / Cheek /Register		Approved by (Planning Section Chief) /s/John Howard / Don Watson			Date May 27, 2007		Time 1900	



<b>DIVISION ASSIGNMENT LIST</b>				1. Branch		2. Division/Group <b>Fireline Maintenance Group</b>	
3. Incident Name <b>Georgia Bay Complex</b>				4. Operational Period Date: <b>5/28/07</b>		Time: <b>0700-1900</b> <b>DAY</b>	
5. Operations Personnel							
Operations Chief	<b>Lee Burwell/John Nichols</b> <b>Jeff Burns (T)</b>			Division/ICT3			
Branch Director	<b>Buck Kline 18*1615</b>			Safety Officer			
6. Resources Assigned this Period							
Strike Team/Task Force/ Resource Designator	Leader / Name	Last Shift Date	Number Persons	Trans. Needed	Drop Off PT./Time	Pick Up PT./Time	
TIMBERLINE HARROW #1 E-2836	<b>Tommy Hodges</b>	6/4/07	1	N	0700	1900	
TIMBERLINE HARROW #2 E-2837	TBD		1	N	0700	1900	
TIMBERLINE HARROW #3 E-2838	TBD		1	N	0700	1900	
TIMBERLINE HARROW #4 E-2839	TBD		1	N	0700	1900	
TIMBERLINE HARROW #5 E-2840	TBD		1	N	0700	1900	
7. Control Operations Maintain fireline as needed by branch director.							
8. Special Instructions Use Okefenokee Refuge North Repeater for backup Command Communications through Big Turnaround Dispatch if necessary.							
9. Division/Group Communication Summary							
Function	Frequency	System	Channel	Function	Frequency	System	Channel
Command		King NIFC		Air to Ground Federal	167.950 167.950/110.9 Narrow band	King NIFC	Group 1 Ch.12
Tactical Div/Group		King NIFC		Air to Ground Georgia IA	159.390	King NIFC	Group 1 Ch. 13
Prepared by (Resource Unit Leader) Pickens / Cheek / Register		Approved by (Planning Section Chief) /s/John Howard / Don Watson		Date May 27, 2007		Time 1900	

		1. Branch		2. Division/Group <b>Law Enforcement / Arson Group</b>			
3. Incident Name <b>Georgia Bay Complex</b>		4. Operational Period Date: <b>5-28-07</b> Time: <b>0700 - 2000</b>					
5. Operations Personnel							
Operations Chief		LE TEAM Leader		<b>Brian Richards</b> 912-218-9312 18*10639			
Branch Director		Safety Officer					
6. Resources Assigned this Period							
Strike Team/Task Force/ Resource Designator	Leader / Name	Last Shift Date	Number Persons	Trans. Needed	Drop Off PT./Time	Pick Up PT./Time	
G.B.I	Tom Crawford		1	N	0700	2000	
GA. Fire Marshal	Brian Clavier		1	N	0700	2000	
V DOF	Blair Dalton		1	N	0700	2000	
V DOF	Dennis Gaston		1	N	0700	2000	
V DOF	John Pine		1	N	0700	2000	
V DOF	Chris Owens		1				
LAS	Jim Baldwin		1	N	0700	2000	
LAS	Mark Singleton		1	N	0700	2000	
Wv DOF	Leo Lester		1	N	0700	2000	
WV DOF	Art Yagel		1	N	0700	2000	
TN DOF	Greg Whitehead		1	N	0700	2000	
TN DOF	Pete Merz		1	N	0700	2000	
MS DOF	Matt Steed		1	N	0700	2000	
PA DOF	Lee Jordan		1	N	0700	2000	
PA DOF	Robert McJillan		1	N	0700	2000	
7. Control Operations <b>Immediately report suspicious activity directly to Brian Richards</b>							
8. Special Instructions See Comm Plan for Frequency assigned to Div team is located at.							
9. Division/Group Communication Summary							
Function	Frequency	System	Channel	Function	Frequency	System	Channel
Command		King NIFC		Logistics		King NIFC	
Tactical Div/Group		King NIFC		Air to Ground		King NIFC	
Prepared by (Resource Unit Leader) Pickens / Cheek / Register		Approved by (Planning Section Chief) /s/John Howard / Don Watson		Date May 27, 2007		Time 1900	

<b>DIVISION ASSIGNMENT LIST</b>		1. Branch <b>Sweat Farm Fire</b>		2. Division/Group <b>Prevention Team Task Force</b>			
3. Incident Name <b>Georgia Bay Complex</b>		4. Operational Period Date: <b>5-28-07</b> Time: <b>06:30 - 2200</b>					
5. Operations Personnel							
Operations Chief				Division/ICT3			
Branch Director				Safety Officer			
6. Resources Assigned this Period							
Strike Team/Task Force/ Resource Designator	Leader / Name	Last Shift Date	Number Persons	Trans. Needed	Drop Off PT./Time	Pick Up PT./Time	
Team Leader	John R. Warner O-177	05/28					
Team Member	Sandra Taylor O-178	05/26					
Team Liaison Officer GA	Roger Lane O-580	05/30					
Team Leader - GFC	Gayle Slauson* O-581	06/15					
Team Member	Cindy Frenzel O-350	06/09					
7. Control Operations Sandra Taylor – demob 05/26/07 John Warner - demob 05/28/07							
8. Special Instructions <ol style="list-style-type: none"> <li><b>Work closely with the GA Arson Task Force on distribution of materials in area affected by arson fires or questionable starts. Planning for a Tuesday meeting with both teams to working focusing efforts</b></li> <li><b>Transition new team members and leader in and finalize documentation at IMT</b></li> <li><b>Review team accomplishments, expected staffing needs, goals, targets for next two weeks</b></li> <li><b>Photographs of interface homes and structures safed from fire by Firewise practices – send to Alan Dozier ASAP</b></li> <li><b>Tie in and work closely with lead PIOs and Liaisons with NCIMT and Southwest IMT concerning fire occurrences, community preparedness, evacuation planning, town hall meetings for areas affected by continuing wildfire danger</b></li> <li><b>Information flyers developed and mailed to Sharon Dolliver for GA branding, return products hopefully by Wednesday, May 30</b></li> </ol>							
9. Division/Group Communication Summary							
Function	Frequency	System	Channel	Function	Frequency	System	Channel
Command		King NIFC		Logistics		King NIFC	
Tactical Div/Group		King NIFC		Air to Ground		King NIFC	
Prepared by (Resource Unit Leader) Pickens / Register / Cheek		Approved by (Planning Section Chief) /s/ John Howard / Don Watson		Date 5/26/07		Time 1900	

<b>DIVISION ASSIGNMENT LIST</b>			1. Branch <b>Kneeknocker</b>		2. Division/Group <b>All Divisions</b>		
3. Incident Name <b>Georgia Bay Complex</b>			4. Operational Period Date: <b>05/28/2007</b> Time: <b>0700-1900</b>				
5. Operations Personnel							
Operations Branch Director					Technical Specialist (RA)		<b>Barry Chesser</b>
Group Supervisor			<b>Steve Abbott (5/28)</b> <b>Ed Keith (6/8) O-422</b>		Safety Officer		<b>Paul Boucher (5/29)</b>
6. Resources Assigned This Period							
Strike Team/Task Force/ Resource Designator		Leader		Number Persons	Trans Needed	Drop Off PT/Time	Pick Up PT/Time
<b>STEN</b>		<b>Brian Hendrix O-5224</b>		(6/3) 1	No	Fireline 0900	Fireline1900
Colorado Type 6 ENG San Isabel NF E-9		Chad Buser (ENGB) Mark Leeper (ENGB (t)) Molly Purnell		(6/9) 3	No	Fireline 0900	Fireline1900
Arizona T6 Lakeside Brush 212 E-12		Stern/Cruze/Thomas		(6/9) 3	No	Fireline 0900	Fireline1900
<b>Breakout</b>							
<b>STPL</b>		<b>TX TBA</b>		1	No	Fireline 0900	Fireline1900
TX JD650 – 1	E-1453	Mitchell / Bell		1	No	Fireline 0900	Fireline1900
TX JD650 – 2	E-1376	Etheridge / Rhoads		1	No	Fireline 0900	Fireline1900
7. Operations <b>Hold line, improve mop up, and monitor fire activity for Kneeknocker using MUC 4 .</b>							
8. Special Instructions <b>For Air Support use the following UTM Coordinates: Kneeknocker E 04014, N 34558</b> <b>For structure protection call 911!</b>							
9. Division/Group Communication Summary							
Function	Frequency	System	Channel	Function	Frequency	System	Channel
Command				Logistics			
Tactical Div/Group	<b>168.200</b>	<b>GRP 3 Tactical</b>	<b>8</b>	Air to Ground	<b>169.200</b>		<b>12</b>
Prepared By (Resource Unit Leader) <b>Bill Widrig</b>			Approved By (Planning Sect. Ch.) <b>/s/ John Howard</b>		Date <b>05/27/07</b>	Time <b>1730</b>	

ICS 204

NFES 1328

<b>DIVISION ASSIGNMENT LIST</b>			1. Branch <b>Roundabout</b>		2. Division/Group <b>A/D</b>		
3. Incident Name <b>Georgia Bay Complex</b>			4. Operational Period Date: <b>05/28/2007</b> Time: <b>0700- 1900</b>				
5. Operations Personnel							
Ops Branch Director				Division/Group Supervisor		<b>Rufus Crutchfield (6/4)</b>	
Technical Specialist (RA)				Safety Officer		<b>Jerry Dombrowske</b>	
6. Resources Assigned this Period							
Strike Team/Task Force/ Resource Designator		Leader		Number Persons	Trans. Needed	Drop Off PT./Time	Pick Up PT./Time
<b>Arkansas TPL</b>		<b>Eric Smith (STPL) 1*18*9200</b>		<b>(6-5) 1</b>	<b>No</b>	<b>Fireline 0900</b>	<b>Fireline 2000</b>
<b>JD 650 DOZ4 SO-22831</b>		<b>D. Pope/ R. Lane</b>		<b>(5-31) 2</b>	<b>No</b>	<b>Fireline 0900</b>	<b>Fireline 2000</b>
<b>CAT D-5G DOZ3 SO-23568</b>		<b>J. Johnston/ T. Phillips</b>		<b>(5-31) 2</b>	<b>No</b>	<b>Fireline 0900</b>	<b>Fireline 2000</b>
<b>Cat D-5 LGP DOZ3 SO-23562</b>		<b>J. Hoopengartner/ J. Williams</b>		<b>(5-31) 2</b>	<b>No</b>	<b>Fireline 0900</b>	<b>Fireline 2000</b>
<b>Williams TF</b>		<b>Tommy Williams (TFLD)</b>		<b>(5-30) 1</b>	<b>No</b>	<b>Fireline 0900</b>	<b>Fireline 2000</b>
<b>Wildland Engine T3 E-2055 Gun-runner Skidgine</b>		<b>Randal Frasier</b>		<b>2</b>	<b>No</b>	<b>Fireline 0900</b>	<b>Fireline 2000</b>
<b>Twiggs 86 T-6 ENG</b>		<b>Larry Rowland Bledsoe</b>		<b>(5-30) 2</b>	<b>No</b>	<b>Fireline 0900</b>	<b>Fireline 2000</b>
<b>Peach 86</b>		<b>Nick Tresco Danny Gore</b>		<b>(6/5) 2 (6/6)</b>	<b>No</b>	<b>Fireline 0900</b>	<b>Fireline 2000</b>
7. Control Operations <b>Hold containment lines, improve mop up into edge of bays, address hot spots, and monitor fire activity.</b>							
8. Special Instructions <b>Do not drive on canal roads due to under burning and falling trees. Be aware of snags and other hazards. For Air Support use the following UTM Coordinates 315206 East 3463551 North. For Structure Protection Support/Engines Call 911.</b>							
9. Division/Group Communication Summary							
Function	Frequency	System	Channel	Function	Frequency	System	Channel
Command		King NIFC		Logistics		King NIFC	
Tactical Div/Group	<b>168.775</b>	King NIFC	<b>USFS 9 GRP 3 Tactical 6</b>	Air to Ground	<b>169.200</b>	King NIFC	<b>12</b>
Prepared by (Resource Unit Ldr.) <b>Bill Widrig</b>		Approved by (Planning Sect. Ch.) <b>/s/ John Howard</b>			Date <b>5/27/2007</b>		Time <b>2000</b>

<b>DIVISION ASSIGNMENT LIST</b>				1. Branch <b>Roundabout</b>		2. Division/Group <b>B/C</b>	
3. Incident Name <b>Georgia Bay Complex</b>				4. Operational Period Date: <b>5/28/2007</b> Time: <b>0700 - 1900</b>			
5. Operations Personnel							
Ops Branch Director				Division/Group Supervisor		<b>Lucky Jones 1*18* 5198</b>	
Technical Specialist (RA)				Safety Officer		<b>Jerry Dombrowske (extended)</b>	
6. Resources Assigned this Period							
Strike Team/Task Force/ Resource Designator		Leader		Number Persons	Trans. Needed	Drop Off PT./Time	Pick Up PT./Time
<b>Oklahoma Type 6 ENG BIA# 8661 E-5</b>		<b>Jerry Fletcher Ron Fields Clyde Crosnoe</b>		<b>(6/2) 3</b>	<b>No</b>	<b>Fireline 0900</b>	<b>Fireline 2000</b>
<b>JD Track Hoe</b>		<b>Quinton Dillingham</b>		<b>1</b>	<b>No</b>	<b>Fireline 0900</b>	<b>Fireline 2000</b>
<b>DOT 5000 gal. Water Tender</b>		<b>Chad Sowell</b>		<b>1</b>	<b>No</b>	<b>Fireline 0900</b>	<b>Fireline 2000</b>
7. Control Operations <b>Hold containment lines, improve mop up into edge of bays, address hot spots, and monitor fire activity.</b>							
8. Special Instructions <b>Do not drive on canal roads due to under burning and falling trees. Be aware of snags and other hazards. For Air Support use the following UTM Coordinates 315206 East 3463551 North. For Structure Protection Support/Engines Call 911.</b>							
9. Division/Group Communication Summary							
Function	Frequency	System	Channel	Function	Frequency	System	Channel
Command		King NIFC		Logistics		King NIFC	
Tactical Div/Group	<b>169.900</b>	King NIFC	<b>USFS 9 GRP 3 Tactical 7</b>	Air to Ground	<b>169.200</b>	King NIFC	<b>12</b>
Prepared by (Resource Unit Ldr.) <b>Bill Widrig</b>		Approved by (Planning Sect. Ch.) <b>/s/ John Howard</b>			Date <b>5/28/2007</b>		Time <b>2000</b>

<b>DIVISION ASSIGNMENT LIST</b>				<b>1. Branch Roundabout</b>		<b>2. Division/Group Breakout</b>	
3. Incident Name <b>Georgia Bay Complex</b>				4. Operational Period Date: <b>5/28/2007</b> Time: <b>0700– 1900</b>			
5. Operations Personnel							
Ops Branch Director				Division/Group Supervisor			
Technical Specialist (RA)				Safety Officer		<b>Jerry Dombrovsk</b>	
6. Resources Assigned this Period							
Strike Team/Task Force/ Resource Designator		Leader		Number Persons	Trans. Needed	Drop Off PT./Time	Pick Up PT./Time
Cat D4H DOZ3 Barrien 72		Josh Rowen		1	No	Roundabout Stage / 0900	Roundabout Stage / 2000
JD 750C DOZ2 Ware 71		Hilton Bennett		1	No	Roundabout Stage / 0900	Roundabout Stage / 2000
JD 750C DOZ2 Echols 70		Greame Treloar		1	No	Roundabout Stage / 0900	Roundabout Stage / 2000
7. Control Operations <b>Task Force 1: Respond to and suppress breakouts and spot overs on the Roundabout fire. Stage at Roundabout Staging area and wait dispatching.</b> <b>Breakout Task force 1 should be readily available for suppressing breakouts on the Roundabout fire within 3 minutes after dispatch.</b>							
8. Special Instructions  <b>For Air Support use the following UTM Coordinates 315206 East 3463551 North</b> <b>For Structure Protection Support/Engines for Roundabout fire Call 911 : Also notify David Moore EMA IC (Linc# 1*11*4801) or Diane May GEMA Coordinator (Linc# 1*11*4818)</b>							
9. Division/Group Communication Summary							
Function	Frequency	System	Channel	Function	Frequency	System	Channel
Mobile to Mobile	<b>159.390</b>	King NIFC	<b>Group 3 1</b>	Logistics		King NIFC	
Mobile to Base	<b>159.390 Rx 159.225 Tx</b>	King NIFC	<b>Group 3 2</b>	Air to Ground	<b>169.200</b>	King NIFC	<b>12</b>
Prepared by (Resource Unit Ldr.) <b>Bill Widrig</b>		Approved by (Planning Sect. Ch.) <b>/s/ John Howard</b>			Date <b>5/27/2007</b>		Time <b>2000</b>

AIR OPERATIONS SUMMARY		PREPARED BY: Bob Seigler		PREPARED DATE/TIME 5/27/07 1900	
1. INCIDENT NAME: Georgia Bay Complex		2. OPERATIONAL PERIOD: Day Shift 5/28/07		START TIME: 0700	END TIME: 2000
				SUNRISE: 0627	SUNSET: 2025
3. REMARKS (Safety Notes, Hazards, Air Operations Special Equipment, etc.): Waycross Helibase—31 14.95 X 82 23.73 Pogo Helibase-30 44.25 X 82 07.69 Braganza Helispot 31 07.23 X 82 15.23 <b>AIR TANKER REQUESTS THRU POGO</b> <ul style="list-style-type: none"> <li>Avoid take-off / landing over ICP</li> <li>All dispatches will come through the ICP in Waycross for state aviation resources.</li> <li>High Towers in Area,</li> <li>LOOK UP, LOOK DOWN, LOOK ALL AROUND</li> <li>Aircraft Dispatching Priorities:               <ol style="list-style-type: none"> <li>Life</li> <li>Structures Threatened</li> <li>Initial Attack</li> <li>Fire threatening perimeter control lines</li> </ol> </li> </ul>				4. MEDEVAC A/C: N17HX—Pogo Helibase	5. TFR: In Place Radius: Rectangle to 3000 MSL_  Altitude: 3000= MSL NW corner Lat 31 09 02 Long 82 32 04 SE corner Lat 30 53 17 Long 82 02 48:
6. PERSONNEL		7. FREQUENCIES	AM	FM	8. FIXED-WING # Avail / Type/ Make-Model / FAA N# / Base(s)
AOBD: Bob Seigler	Phone 828-231-4560  ICP FAX: 912-285-6014	AIR/AIR FW:	122.575 E/sd 122.825 scdry 122.925 GA IA 123.125 W/sd		Airtankers @ T-06 / OCF LCQ & OCF T-20 / OCF T-22 / OCF T-09 / LCQ T-43 / LCQ T-21 / OCF T-10 / LCQ
ATGS: T. Dorigan—Waycross		AIR/AIR RW:	122.575 E/sd 123.125 W/sd 122.925 GA IA		Leadplanes Lead B-2 ASM @ OCF Lead 47 @ LCQ Base FAX #: Lead B-88 ASM @ LCQ
State Aviation Lead Waycross Airport Mike Leverette		AIR/GROUND:		151.145 GA IA 167.950 Swt. Farm	ATGS Aircraft 90K—Beach Baron—T. Dorigan 0EB—King Air—C. Cross Lake City
ASGS: Ray Dew	478-550-2990	COMMAND: CH 1			Other
Waycross HEBM: Kevin Kozak	360-791-2520	COMMAND RPT	Rx: Tx:		Flight follow with Pogo Helibase or Waycross Helibase IA Air Attack for State--- Cessna 182's and GA NG HEAVIES Bell 407-Chopper 7 Approved Helispots—Refer to Okefenokee NWR Despite Map One GNG Helicopter will remain at Waycross Airport for IA at all times ALL AIRCRAFT Call Air Attack when entering TFR---
Waycross HB & Braganza HS:		DECK FREQ:		163.100	
Braganza Helispot		TOLC FREQ:			
HESM: Wayne Langston	919-920-4906	Rx: 151.145			
Dip Site Mgr: Walter Thompson	803-221-1081	Tx: 151.145			
Pogo Helibase	912-496-4415	FLT FOLLOWING:		RX	
Davis Helibase	912-496-3765	Pogo Helibase		164.625	
Waycross Helibase	912-338-5982	Waycross Helibase		TX	
				163.150	
				TONE	
				103.5	



<b>Fargo Helibase—(Golf Course)</b> N 30 41 27.3 x W 82 34 02.0 <b>Stephen Foster SP (Pocket)</b> N 30 47 32.2 x W 82 22 39..6					<b>Waycross Helibase will call Pogo as a back up!!!</b> <b>ALL FLIGHTS WILL BE CLEARED WITH AOB</b> <b>107Z - IR-RW Cobra</b>
---	--	--	--	--	---

**9. HELICOPTERS (Use Additional Sheets As Necessary)**

**HEAVY HELICOPTERS @ DAVIS HELIBASE & POGO HELIBASE**

FAA N#	TY	MAKE/MODEL	BASE	AVAIL	START	REMARKS	FAA N#	TY	MAKE/MODEL	BASE	AVAIL	START	REMARKS
N5BH	I	Sikorsky S-70A-27	Pogo	0900	0930	Bucket Drops	N5738Y	III	Bell 206	Pogo	0900	0930	Recon/ Admin/ IA
N4503E	I	Sikorsky S-61N	Pogo	0900	0930	Bucket drops	N12HX	III	Bell 407	Pogo	0900	0930	Admin/ Recon
N15HX	II	Bell 205++	Pogo	0900	0930	Bucket drops	Chopper 7/7GF	III	Bell 407	Waycross	0900	0930	GA IA / Bucket Drops
N17HX II	II	BELL 205++	Pogo	0900	0930	Bucket Drops	90K	I	Baron	Waycross	0900	0930	ATGS
606	I	UH-60 (NG)	Waycross	0900	0930	IA for State & Bucket Drops	62Z	I	King Air	Lake City	0800	0930	ATGS
89125	I	CH47 (NG)	Waycross	0900	0930	IA for State & Bucket Drops	1AF (LA)		Cessna 182	Waycross	0900	0900	Aerial Detection
017	I	UH-60 (NG)	Waycross	0900	0930	IA for State & Bucket Drops	2AF (LA)		Cessna 182	Waycross	0900	0930	Aerial Detection
71K (GA)		Cessna 185	Waycross	0900	0930	Aerial Detection GA	98E (GA)		Cessna 182	Waycross	0900	0930	Aerial Detection
11H (GA)		Cessna 182	Waycross	0900	0930	Aerial Detection GA							

<b>10. TASK/MISSION/ASSIGNMENT (Type/Function includes: Air Tactical, Retardant, Recon, Personnel Transport, Water Dropping, S&amp;R, etc.)</b>						
TYPE/FUNCTION	NAME OF PERSONNEL OR CARGO (if applicable) OR INSTRUCTIONS FOR TACTICAL AIRCRAFT			MISSION START	FLY FROM	FLY TO
Type II Helicopter	Operation and Logistic Support			0930	Helibase	Fire and Return
Type III Helicopter	Operation and Logistic Support			0930	Helibase	Fire and Return
Type I Helicopter	Operation and Logistic Support			0930	Helibase	Fire and Return
ATGS Platforms	Aerial Supervision of all Aircraft over Incidents			0930	Waycross Airport & Lake City	Fire and Return
State Detection Fixed Wing	Aerial Detection and IA for New Fire Starts			0930	Waycross Airport	Fire and Return

## Georgia Bay Complex – Group 1

INCIDENT RADIO COMMUNICATIONS PLAN		1. Incident Name <b>Georgia Bay Complex</b>		2. Date/Time Prepared <b>5- 27-2007</b>	3. Operational Period Date/Time <b>5- 28-2007</b>
4. BASIC RADIO CHANNEL UTILIZATION					
Radio Type/Cache	Channel	Function	Frequency/Tone	Assignment	Remarks
<b>King NIFC</b>	<b>1</b>	<b>Command Ware EMA Repeater</b>	<b>158.7825/162.2 153.7625/162.2 Narrow Band</b>	<b>Command Rpt</b>	<b>Sweat Farm</b>
<b>King NIFC</b>	<b>2</b>	<b>Fire Tower Repeater</b>	<b>159.225 /203.5 151.280/203.5</b>	<b>Command Rpt</b>	<b>South of Homerville</b>
<b>King NIFC</b>	<b>3</b>	<b>GA Mutual Aid</b>	<b>154.280 154.280</b>	<b>Structural &amp; Tactical</b>	
<b>King NIFC</b>	<b>4</b>	<b>911 &amp; Structural Coordinator Rptr.</b>	<b>154.445/ 118.8 154.010/118.8</b>	<b>Emergency Traffic</b>	<b>This is a heavy traffic channel, use only for Emergency Traffic</b>
<b>King NIFC</b>	<b>5</b>	<b>Tactical</b>	<b>159.285 Rx &amp; Tx</b>	<b>Divs. WI, WJ, WQ, WR</b>	<b>Southern COMPACT</b>
<b>King NIFC</b>	<b>6</b>	<b>Tactical</b>	<b>168.050 Rx &amp; Tx Narrow Band</b>	<b>Div. WV, Swing IA Sweat Farm Night</b>	<b>Fireline</b>
<b>King NIFC</b>	<b>7</b>	<b>Tactical</b>	<b>168.600 Rx &amp; Tx Narrow Band</b>	<b>Divs. WX, WY</b>	<b>Fireline</b>
<b>King NIFC</b>	<b>8</b>	<b>Tactical</b>	<b>164.1375 Rx &amp; Tx Narrow Band</b>	<b>Divs. H, Z, WA, WL, WM, WR</b>	<b>Fireline</b>
<b>King NIFC</b>	<b>9</b>	<b>Tactical</b>	<b>168.775 Rx &amp; Tx Narrow Band</b>	<b>Breakout Group Prep Group Bugaboo Night</b>	<b>Fireline</b>
<b>King NIFC</b>	<b>10</b>	<b>Tactical</b>	<b>169.900 Rx &amp; Tx Narrow Band</b>	<b>Divs. I, J, K, WH, WS, WT, WU</b>	<b>Fireline</b>
<b>King NIFC</b>	<b>11</b>	<b>Tactical</b>	<b>168.200 Rx &amp; Tx Narrow Band</b>	<b>Divs. A, B, C, D, WE, WF, WG Manor Group</b>	<b>Fireline</b>
<b>King NIFC</b>	<b>12</b>	<b>Air to Ground</b>	<b>167.950 167.950/110.9 Narrow Band</b>	<b>Federal Air to Ground</b>	
<b>King NIFC</b>	<b>13</b>	<b>Air To Ground</b>	<b>159.390 Rx &amp; Tx</b>	<b>Georgia Air to Ground</b>	<b>INITIAL ATTACK</b>
<b>King NIFC</b>	<b>14</b>	<b>Air Guard</b>	<b>168.625 168.625/110.9 Narrow Band</b>	<b>Air Emergency Only</b>	<b>Air Emergency Only</b>
5. Prepared By (Communications Unit) <b>LARRY SHARPE/ COML</b>					

## Georgia Bay Complex - Group 2

INCIDENT RADIO COMMUNICATIONS PLAN		1. Incident Name <b>Georgia Bay Complex</b>		2. Date/Time Prepared <b>5- 27 -2007</b>	3. Operational Period Date/Time <b>5- 28-2007</b>
4. BASIC RADIO CHANNEL UTILIZATION					
Radio Type/Cache	Channel	Function	Frequency/Tone	Assignment	Remarks
<b>King NIFC</b>	<b>1</b>	<b>GFC Fargo Repeater</b>	<b>159.120/107.2 151.370/123.0</b>	<b>Command Rpt</b>	<b>Bugaboo Brush</b>
<b>King NIFC</b>	<b>2</b>	<b>Fire Tower Repeater</b>	<b>159.225 /203.5 151.280/203.5</b>	<b>Command Rpt</b>	<b>South of Homerville</b>
<b>King NIFC</b>	<b>3</b>	<b>GA Mutual Aid</b>	<b>154.280 154.280</b>	<b>Structural &amp; Tactical</b>	
<b>King NIFC</b>	<b>4</b>	<b>911 &amp; Structural Coordinator Rptr.</b>	<b>154.445/ 118.8 154.010/118.8</b>	<b>Emergency Traffic</b>	<b>This is a heavy traffic channel, use only for Emergency Traffic</b>
<b>King NIFC</b>	<b>5</b>	<b>Tactical</b>	<b>159.285 Rx &amp; Tx</b>	<b>Divs. WI, WJ, WQ, WR</b>	<b>Southern COMPACT</b>
<b>King NIFC</b>	<b>6</b>	<b>Tactical</b>	<b>168.050 Rx &amp; Tx Narrow Band</b>	<b>Div. WV, Swing IA Sweat Farm Night</b>	<b>Fireline</b>
<b>King NIFC</b>	<b>7</b>	<b>Tactical</b>	<b>168.600 Rx &amp; Tx Narrow Band</b>	<b>Divs. WX, WY</b>	<b>Fireline</b>
<b>King NIFC</b>	<b>8</b>	<b>Tactical</b>	<b>164.1375 Rx &amp; Tx Narrow Band</b>	<b>Divs. H, Z, WA, WL, WM, WR</b>	<b>Fireline</b>
<b>King NIFC</b>	<b>9</b>	<b>Tactical</b>	<b>168.775 Rx &amp; Tx Narrow Band</b>	<b>Breakout Group Prep Group Bugaboo Night</b>	<b>Fireline</b>
<b>King NIFC</b>	<b>10</b>	<b>Tactical</b>	<b>169.900 Rx &amp; Tx Narrow Band</b>	<b>Divs. I, J, K, WH, WS, WT, WU</b>	<b>Fireline</b>
<b>King NIFC</b>	<b>11</b>	<b>Tactical</b>	<b>168.200 Rx &amp; Tx Narrow Band</b>	<b>Divs.A, B, C, D, WE, WF, WG, Manor Group</b>	<b>Fireline</b>
<b>King NIFC</b>	<b>12</b>	<b>Air to Ground</b>	<b>167.950 167.950/110.9 Narrow Band</b>	<b>Federal Air to Ground</b>	
<b>King NIFC</b>	<b>13</b>	<b>Air To Ground</b>	<b>159.390 Rx &amp; Tx</b>	<b>Georgia Air to Ground</b>	<b>INITIAL ATTACK</b>
<b>King NIFC</b>	<b>14</b>	<b>Air Guard</b>	<b>168.625 168.625/110.9 Narrow Band</b>	<b>Air Emergency Only</b>	<b>Air Emergency Only</b>
5. Prepared By (Communications Unit) <b>LARRY SHARPE/ COML</b>					

## Georgia Bay Complex – Kneeknocker/Roundabout (Group 3)

INCIDENT RADIO COMMUNICATIONS PLAN		1. Incident Name <b>Georgia Bay Complex</b>		2. Date/Time Prepared <b>5- 27-2007</b>	3. Operational Period Date/Time <b>5- 28-2007</b>
4. BASIC RADIO CHANNEL UTILIZATION					
Radio Type/Cache	Channel	Function	Frequency/Tone	Assignment	Remarks
<b>King NIFC</b>	<b>1</b>	<b>Mobile to Mobile</b>	<b>159.390 RX &amp; Tx</b>	<b>Breakout</b>	<b>Kneeknocker &amp; Roundabout</b>
<b>King NIFC</b>	<b>2</b>	<b>Mobile to Base</b>	<b>159.390 Rx 159.225 Tx</b>	<b>Breakout</b>	<b>Kneeknocker &amp; Roundabout</b>
<b>King NIFC</b>	<b>3</b>	<b>GA Mutual Aid</b>	<b>154.280 154.280</b>	<b>Race Track Fire</b>	<b>Structural &amp; Tactical</b>
<b>King NIFC</b>	<b>4</b>	<b>Tactical</b>	<b>159.285 Rx &amp; Tx</b>	<b>As needed</b>	<b>Southeastern Compact</b>
<b>King NIFC</b>	<b>5</b>	<b>Tactical</b>	<b>164.1375 Rx &amp; Tx</b>		
<b>King NIFC</b>	<b>6</b>	<b>Tactical</b>	<b>168.775 Rx &amp; Tx</b>	<b>Roundabout AD</b>	
<b>King NIFC</b>	<b>7</b>	<b>Tactical</b>	<b>169.900 Rx &amp; Tx</b>	<b>Roundabout BC</b>	
<b>King NIFC</b>	<b>8</b>	<b>Tactical</b>	<b>168.200 Rx &amp; Tx</b>	<b>Kneeknocker</b>	
<b>King NIFC</b>	<b>9</b>	<b>Tactical</b>	<b>159.270 Rx &amp; Tx</b>	<b>Ft. Mudge Fire</b>	<b>Red Channel</b>
<b>King NIFC</b>	<b>10</b>	<b>Tactical</b>	<b>159.420 Rx &amp; Tx</b>	<b>Forest Drive Fire</b>	<b>White Channel</b>
<b>King NIFC</b>	<b>11</b>	<b>Tactical</b>	<b>159.330 Rx &amp; Tx</b>		<b>Blue Channel</b>
<b>King NIFC</b>	<b>12</b>	<b>Air to Ground</b>	<b>169.200 Rx &amp; Tx</b>	<b>Kneeknocker</b>	<b>Air to Ground Dedicated to this complex</b>
<b>King NIFC</b>	<b>13</b>	<b>Air Guard</b>	<b>168.625 168.625/110.9 Narrow Band</b>	<b>Air Emergency Only</b>	<b>Air Emergency Only</b>
<b>King NIFC</b>	<b>14</b>	<b>Knee Repeater</b>	<b>159.465 Rx 151.145 Tx /114.8</b>	<b>Command Repeater</b>	<b>Kneeknocker only</b>
5. Prepared By (Communications Unit) <b>LARRY SHARPE/ COML</b>					

<b>MEDICAL PLAN</b>	1. Incident Name <b>Georgia Bay Complex</b>	2. Date Prepared <b>5/27/07</b>	3. Time Prepared <b>1200</b>	4. Operational Period <b>5/28/07 DAY &amp; NIGHT SHIFT</b>	
<b>5. Incident Medical Aid Station</b>					
Medical Aid Stations	Location			Paramedics Yes No	
Medical Unit Georgia Bay 912-218-9101	Georgia Forestry Headquarters ICP - Carswell (MEDL)			EMT	
Medical Unit Fargo	Fargo Welcome Center – Anderson (MEDL)			Yes EMT	
<b>6. Transportation</b>					
<b>A. Ambulance Services</b>					
Name	Address	Phone	Paramedics Yes No		
Ware County EMS	Waycross Georgia (911 to activate)	912-281-9467 Linc 1*96*116	Yes		
Charlton Memorial EMS	1203 N Third St Folkston Ga (911 to activate)	888-255-4961 Linc 1*25*3468	Yes		
Fargo EMS Staging Unit	Fargo (911 to activate)	Ask for Fargo Staging EMS	Yes		
<b>Air Ambulance Service</b>					
Trauma 1	Jacksonville, FL (26 min/air)	1-800-223-4878	Yes		
AirMed	Augusta, GA (2 hrs/air)	1-888-792-9245	Yes		
Lifeflight (155.340)	Jacksonville, FL (35 min/air)	1-877-870-7779	Yes		
<b>B. Incident Ambulances</b>					
Name	Location			Paramedics Yes No	
Ware County EMS	Waycross (Drop Point 305)			Yes	
Ware County EMS	Fargo (Fargo Unit – 41 First Street – Fargo, GA 31631)			Yes	
<b>7. Hospitals</b>					
Name	Address	Travel Time Air Ground	Phone	Helipad Yes No	Burn Center Yes No
Charlton Memorial	1203 N 3 <sup>rd</sup> St Folkston N 30°50.8 W 82°00.1	10 min 20 min.	912-496-2531	Yes	No
Satilla Regional	410 Darling Ave Waycross Ga N 31°13.56 W 82°21.058	15 min 30 min	912-283-3030	Yes	No
Shands Hospital (level I)	Jacksonville, FL N 30°20 97 W 82° 13 992	45 min 1.5 hrs	800-223-4878	Yes	Yes
South Georgia Medical Center	2501 N. Patterson St. Valdosta, GA 31602	60 min	229-333-1000		
Memorial Hospital	Savannah, GA 4700 Waters 3200.7 8107.6	40 min	912-350-8999	Yes	No
Shands Burn Center	Gainesville, FL 38.33 N 082 20.73W	45 min	352-265-0300	Yes	Yes
Doctor's Hospital Joseph Still Burn Center	August,GA (Chief Burn Ctr 3328.943 8205.422	90 min 3 ½ hrs	877-863-9595 706-863-9595	Yes	Yes
<b>8. Medical Emergency Procedures</b>					
Identify any EMTs and Paramedics in your crews. All medical emergencies will be reported to the Division Supervisor who will assume command and notify Line Medics.  1. Provide medical care & stabilize patient. 2. Call 911 3. Notify Communications via radio over Command Channel. 4. Communications will clear radio traffic for medical emergency. 5. Notify the Field Ops Section Chief. 6. Com will notify ambulance and coordinate with IC, SOF, MEDL  <b>Helibase – ICP Waycross: 31 07.23 X 82 15.23</b> <b>Helispots – Fargo Base Camp:</b> <b>H-114 (4 mi marker Hwy 177 – Stephen C. Foster St. Prk) 30 47 30.02 X 82 22 39.5</b> <b>H-113 (Hwy 441 - golf course) 30 41.739 X 82 33.961</b>			<b>INJURY REPORTING PROCESS:</b> Nature of Injury: _____ Location of Patient: _____ Transportation Requested by: Air___ Ground___ Pick Up Point: _____ Lat _____ Long _____ Patient Unit ID: _____ Is an EMT w/Patient: Yes___ No___ Age: _____ Sex: Male___ Female___ <b>MAJOR EMERGENCIES – Secure the area and identify witness for later investigation. Keep an accurate log of events.</b> <b>NOTE: Do not give Patients Name over the radio.</b>		
Prepared by (Medical Unit Leader) <b>(GA) Robert Carswell (T) (912) 218-9101 Linc 1*18*7480</b>			10. Reviewed by (Safety Officer) <b>(NC) Mike Huffman (919) 218-9060</b>		

# STANDARDS OF CONDUCT

## EMERGENCY INCIDENT PERSONNEL

---

Each individual on this incident is responsible for:

- Being *ready and able* to perform their assigned duties effectively, and
- Conducting themselves *appropriately at all times*.

There is ***ZERO tolerance*** for inappropriate behavior while assigned to this incident, including such conduct as:

- Drug possession or use
- Improper/illegal Alcohol use
- Firearms possession/use
- Any unsafe activity
- Discrimination
- Sexual harassment

Each individual is expected to be physically and mentally prepared to perform assigned emergency support duties at all times.

**Anything less than strict adherence to these standards and other posted rules will be dealt with and could result in immediate dismissal from the incident.**

Individuals who are aware of any inappropriate behavior of incident personnel should tell their supervisor, Security or contact the Deputy Incident Commander.

## HUMAN RESOURCE MESSAGE

### What ZONE are you in?

#### Zero Tolerance Zone

- Drug/Alcohol Misuse
- Discrimination
- Sexual harassment
- Fighting

#### Inappropriate Behavior Zone

- Put down humor/sarcasm
- Arguing & quick temper
- Discussing inappropriate topics
- Horseplay

#### Safe Zone:

- Mutual respect
- Clear communication
- Proper conduct
- Good performance

**The success of this incident rests on EACH of us staying within the "SAFE ZONE". Engaging in zero tolerance zone activities and other inappropriate behaviors falls outside the safe zone.**

**Do your part: maintain your self-respect with self-control.**

Contact us for assistance with any kind of "people" concern. We're at the Florida Bugaboo ICP (386-719-2741) or call us at the numbers below.

Gary Samaha, HRSP  
404-357-1516

Andrew Quillen, HRSP (T)  
404-202-1547

Respect your efforts, respect yourself. Self-respect leads to self-discipline. When you have both firmly under your belt, that's real power. ~Clint Eastwood

In my day, we didn't have self-esteem, we had self-respect --- and no more of it than we had earned. ~Jane Haddam

## Sweat Farm Road Phone Roster 5-28-07

NAME	POSITION	PHONE NUMBERS	LINC ID
<b>COMMAND &amp; GENERAL STAFF</b>		<b>912-285-6046</b>	<b>Fax 912-285-6014</b>
Reid Hildreth	IC	912-218-5108	18*11878
Dan Brandon	DPIC	704-616-2252	
Gary Thompson	LOFR	919-548-5836	
Joel Hambright	LOFR (Fargo)	912-218-9316	
Bruce MacDonald	PIO	912-218-9319	18*11959
Diane Steltz	PIO	919-548-5831	
Bernie Pineda	PIO	478-550-2989	
Michelle Weston	PIO	912-281-8267	
Tom Berglund	PIO	478-550-2981	
John Warner	PRTL	936-546-3164	
Donna Wilson	PRTM	540-797-6241	
Sandra Taylor	PRTM	936-546-3554	
Mike Huffman	SOF 2	919-218-9060	
Mark Luellen	SOF2(T)	919-356-9487	
Keith Kenkins	SOF(Bugaboo Br)	478-550-2991	
Ron Hamm	SOF(Sweat Farm Br)	979-268-3782	
Rodney Bell	SOF	912-218-7132	18*11932
Andy Meadows	SOF	252-229-0161	
Harry Kepler	SOF	912-218-8325	18*7145
John Orton	SOF	912-218-4958	18*4899
Larry Miller	SOF	912-218-9355	18*12622
Pete Stewart	SOF	912-218-8965	18*7610
Tim Sampson	SOF	912-218-9215	18*11832
Steve Snider	SOF	912-218-9308	18*10090
<b>Agency Reps</b>			
Billy Leitch	LOFR	912-218-9325	18*12022
Shawn Alexander	LOFR	912-218-9232	18*7378
Skippy Reeves	LOFR	912-218-9359	18*12756
<b>OPERATIONS</b>		<b>912-285-6039</b>	
John Nicols	OSC	912-218-9323	18*11981
Lee Burwell	OSC	979-218-9909	18*11907
Jeff Burns	OSC	912-218-5414	18*11904
Amery Wells	OPBD	912-218-8343	18*4212
Doug Mattox	DIVS	912-218-9324	18*11985
Mike Appling	DIVS	912-218-9343	18*12314
Heath Morton	DIVS	912-218-7135	18*11946
Jay Collett	DIVS	912-218-9320	18*11960
Jim Davis	DIVS	912-218-9307	18*10062
Pete Villa	DIVS	912-218-8226	18*4523
David LaChapelle	DIVS	912-218-7103	18*6748
Ron Swan	DIVS	912-218-9141	18*11862
Richard Gonzalas	DIVS	912-218-9352	18*12520
Lucus Santio	DIVS	435-790-7094	
Ricky Adkins	DIVS	912-218-9307	18*10062
Phillip Wall	DIVS	252-229-7135	
F.Pingiczer	DIVS		
William Neff	LE/Arson	912-287-4499	18*13485
BIG TURNAROUND OPS SEC		912-496-4173	
CSX RAIL ROAD OPERATIONS- Dixon		912-270-0699	
<b>AIR OPERATIONS</b>		<b>912-285-6039</b>	
Bob Seigler	AOPD	828-231-4560	
Ray Dew	ASGS	478-550-2990	
Wayne Langston	HEB2	919-920-4906	
David Langley	HEB1	912-218-8937	18*6167
<b>FINANCE</b>		<b>912-285-6038</b>	
Marlene Sherrod	FSC	912-285-6038 Landline	252-904-6977 cell
Jennifer Johnson	FSC (t)	919-698-2457	
Paul Palmiotto	IBA	478-681-6111	
Barbara Hatch	Buying Team	912-285-6112 Hard Line	505-660-0399 Cell
Miguel Martinez	Comp/Claims	912-285-6038	
Christine Overman	COST	252-312-5238	
Ron Myers	COST	919-218-2568	
Mavis Gragg	TIME	828-757-6647	
Richard Chellberg	Procurement (t)	336-239-1442	
Mary Jane Derendoff	EQTR	912-285-6038	
Bob Drown	EQTR	912-285-6038	
Eunice Vankuren	PTRC	912-285-6038	



--	--	--	--

## Sweat Farm Road Phone Roster 5-28-07

NAME	POSITION	PHONE NUMBERS	LINC ID
<b>PLANNING</b>			
		<b>912-285-6046</b>	
John Howard	PSC	912-218-7586	18*6871
Don Watson	DPSC	910-334-0033	
Bill Pickens	RESL	919-218-2802	
Michael Cheek	RESL	704-616-0747	
Chris Brenzel	SITL	760-822-2257	
Dan Ochocki	SITL	970-903-1957	
Greg Smith	SITL	828-506-0672	
Annie Lott	DOCL	919-333-8410	
Leslie Chadwell	CTSP	919-218-6451	
Gary Curcio	FBAN	919-810-5623	
Theresa Hurdle	FOBS	912-218-9316	18*11828
Gary White	FOBS	912-218-9358	18*12670
Tim Howell	FOBS (t)	828-508-2386	
Bill Leatherwood	GISS	828-450-2665	
Buster Robinson	GISS	936-546-8783	
Will Sumner	GISS (t)	919-218-6285	
John Pendergrast	IMET	912-218-9309	18*10247
Chris Liv	SCKN(t)	252-567-0830	
Rich Dottellis	SCKN(t)	936-546-3138	
Mary Lou Dozier	DMOB	912-218-9361	18*12771
David Hicks	IRIN	541-554-0143	
<b>LOGISTICS</b>			
		<b>912-285-6091</b>	<b>Fax 912-285-6111</b>
<b>ORDERING</b>			
		<b>912-285-6068</b>	
Troy Cleland	LSC	252-229-1997	
Travis Ruff	LSC (t)	828-413-4440	
Fred LaChance	LSC @ FARGO	541-398-1620	
Larry Sharpe	COML	919-218-0992	
Wayne Williams	MEDL (t)	919-801-4264	
Robert Carswell	MEDL (t)	912-218-9101	18*7480
Lenny Throckmorton	EMT	804-467-9576	
Thomas Nails	EMT		
Roger Atkinson	SECM	479-970-3038	
Tony Bolton	SEC1	601-405-9027	
Wayne Garman (Camp for the Blind)	BCMG	478-550-3000	
Fredrick Dunets (Camp for the Blind-Night)	BCMG	912-218-9354	
Danté Whittaker, Sr. (ICP)	BCMG (T)	478-550-2985	
Chuck Barber	Camp Crew Manager	912-218-9342	18*12299
Danny Hayes	EQPM	828-292-4007	
Michelle Sanchez	EQPM	912-281-8279	
Keith Skinner	EQPM	936-546-8133	
Clyde Leggins	FACL	828-443-2294	
Chris Hubacker	FDUL	912-218-9321	18*11964
William Lee	Fuel Truck	912-218-9017	18*6682
Greg Cox	GSUL	910-334-0027	
Mike Summers	GSUL	936-546-1957	
Travis Shidal	ORDM	704-473-0430	
Jaime Logan	RCDM	828-361-3606	
Todd Nightengale	STAM (FARGO)	936-546-3163	
Keith Walters	SUPL	336-214-2426	
Steve Moore	FARGO	912-218-9344	18*12374
Bobby Weaver	THSP	936-546-8010	
John Rush	THSP	936-546-1883	
Larry Brown	GDC	912-218-9366	11*32283
Don Shugart	GDC	912-218-9371	11*32063
Sylvester Hall	GDC	912-218-9367	11*32054
Tommy Maddox	GDC	912-218-9374	11*32069
<b>MISC.</b>			
COMMAND DISPATCH		912-218-9044	18*6870
PUBLIC INFORMATION		912-218-9319	18*11959
WAYCROSS DISTRICT OFFICE		912-287-4915	
MACON DISPATCH		912-218-9232	18*7378
MOP UP COMMAND			18*4918
FARGO BASE		912-218-8907	18*7532

<b>OTHER INCIDENT MANAGEMENT TEAMS</b>			
<b>SOUTHWEST AREA IMT: BIG TURNAROUND Phone Roster</b>			
<b>NAME</b>	<b>PHONE NUMBERS</b>		
<i>COMMAND STAFF</i>	912-496-4177		
<i>PLANNING</i>	912-496-4173		
<i>OPERATIONS</i>	912-496-4132		
<i>AIR OPERATIONS</i>	912-496-4415		
<i>FINANCE</i>	912-496-4102		
<i>LOGISTICS</i>	912-816-5749		
<i>EXPANDED DISPATCH</i>	912-496-3162		
<i>COMMUNICATIONS</i>	912-496-2111		
<b>FLORIDA STATE RED TEAM and ATLANTA NIMO TEAM Roster 5-24-07</b>			
<b>NAME</b>	<b>PHONE NUMBERS</b>		
<i>INFORMATION</i>	386-719-2739		
<i>OPERATIONS</i>	386-719-2743		
<i>COMMUNICATIONS</i>	386-719-2748		
<i>FLORIDA INTERAGENCY COORDINATION</i>	850-580-6885		
<b>OPERATIONS Kneeknocker</b>			
Barry Chesser (Kneeknocker )	Technical Specialist	912-218-6552	Line 1*18*4166
Steve Abbott	DIVS	770-550-1868	Line 1*18*1628
Earl Roberson	Technical Specialist	912-218-8344	Line 1*18*4279
John Godwin	DIVS		Line 1*18*3213
<b>OPERATIONS Roundabout 912-422-3140</b>			
Paul Gillis	Technical Specialist		Line 1*18*20684
Steve Miller	OPBD		Line 1*18*11625
Jamie Smith	DIVS		Line 1*18*4755
Brent McCarty	DIVS		Line 1*18*12585
Lucky Jones	DIVS		Line 1*18*5198
<b>OTHER AGENCIES</b>			
Brantley County Fire Coordinator	Ken Lee	912-218-2012	1*44*1081
		912-717-3330	
Nahunta FD Fire Chief	Button Lee	904-699-1619	1*25*323
		912-282-8730	
EMA / 911 Director	Billy Lartz	912-217-1638	1*11*2001
Georgia State Patrol	Dispatcher	912-287-6500	
Brantley County Sheriff	Robert Thomas	912-614-1658	1*25*1130
Clinch County Sheriff		912-487-5316	
WareCounty Sheriff		912-287-4325	
Charleton County Sheriff		912-496-7321	
DNR, ENGB	T. Trowbridge	© 912-223-2815	
DNR ENOP	Sam Williams	229-212-0124	
Atkinson EMA IC	David Moore		
Atkinson GEMA Coordinator	Diane May		
North End Resource Advisor	Dean Easton	912-496-7366	ext 235
South End Resource Advisor	Doug Nuss	912-286-3110	
Joint Information Center	Waycross	1-866-380-9966	



Tile 1

North Carolina IMT

Sweet Farm Branch

Cox Prairie Branch

Tile 3

Bugaboo Scrub 2 Branch

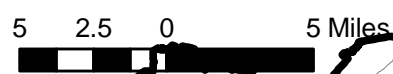
Southern & Florida IMT's

Southwest Branch I IMT

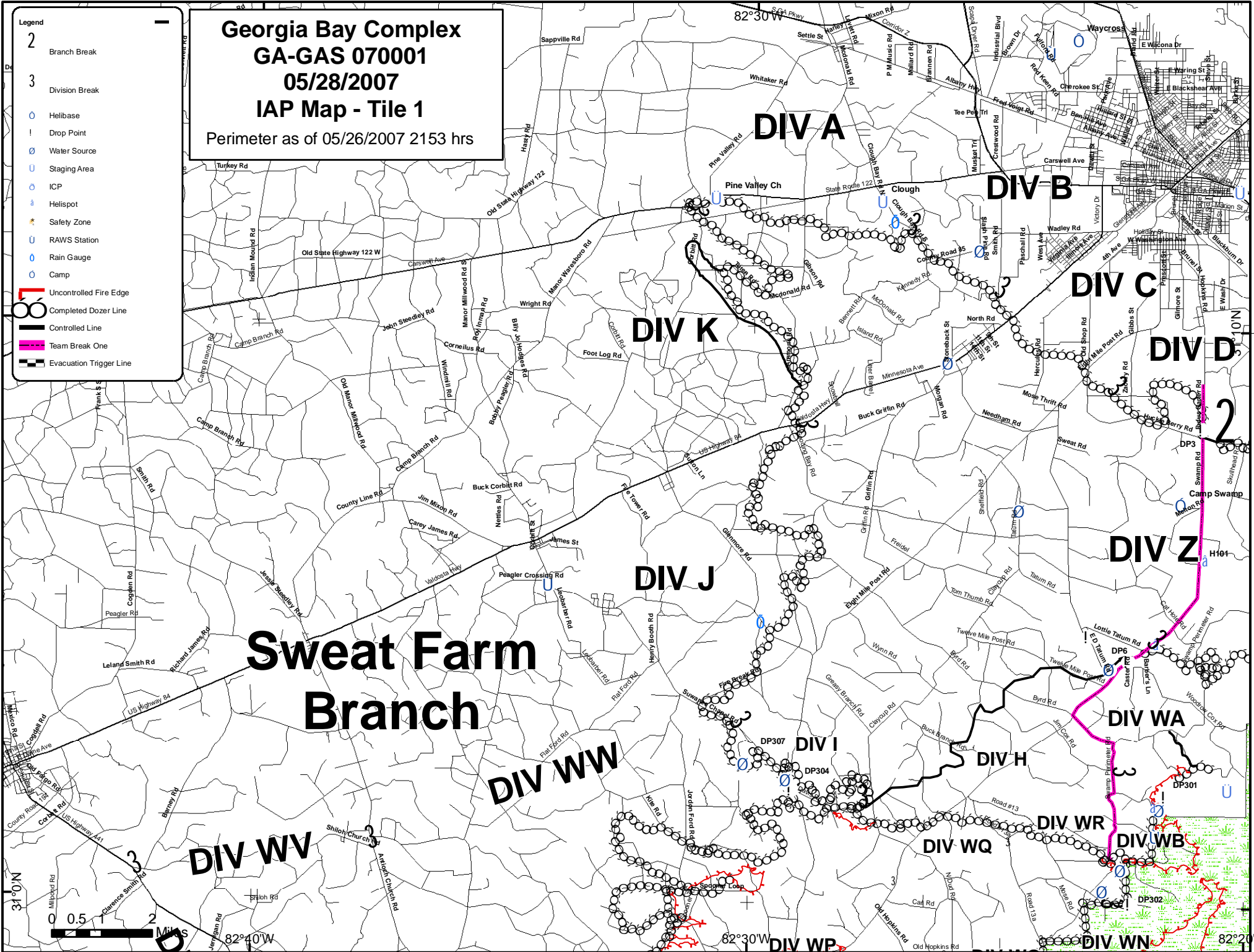
Branch II

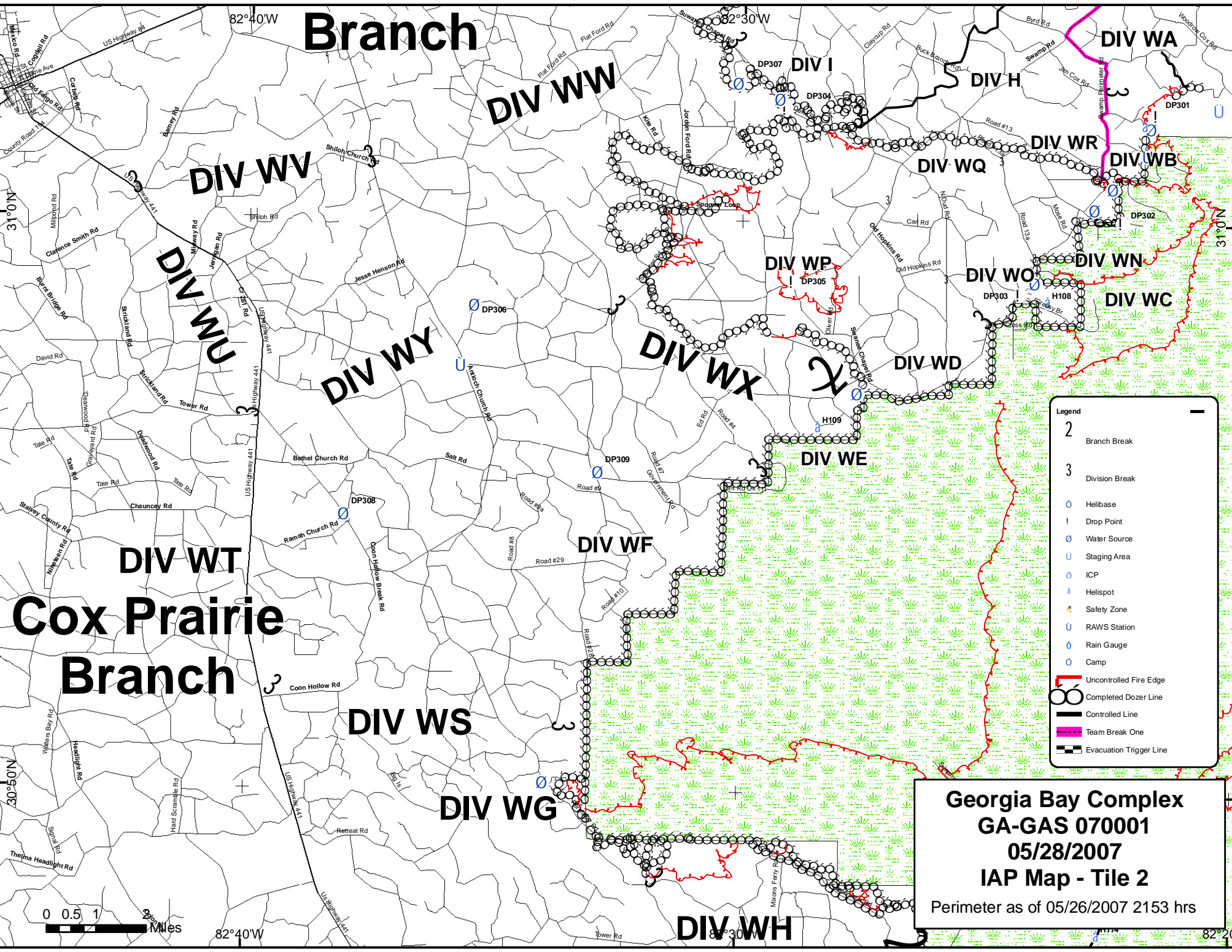
**Legend**

- Helibase
- ICP
- RAWS Station
- Rain Gauge
- Safety Zone
- Staging Area
- Water Source
- Branch Break
- Camp
- Division Break
- Drop Point
- Helispot
- Controlled Line
- Team Break One
- Uncontrolled Fire Edge
- Evacuation Trigger Line
- Completed Dozer Line
- Refuge Boundary



**Georgia Bay Complex**  
**GA-GAS-070001**  
 May 28, 2007  
**IAP Map Index**  
 Fire Perimeter as of 05/26/2007 2153 hrs.  
 Created by: W. Sumner  
 05/27/2007 2000 hrs





**Legend**

- 2 Branch Break
- 3 Division Break
- Helibase
- ! Drop Point
- Water Source
- U Staging Area
- ICP
- ⋆ Helispot
- ★ Safety Zone
- U RAWS Station
- Rain Gauge
- Camp
- Uncontrolled Fire Edge
- Completed Dozer Line
- Controlled Line
- Team Break One
- Evacuation Trigger Line

**Georgia Bay Complex**  
**GA-GAS 070001**  
**05/28/2007**  
**IAP Map - Tile 2**  
 Perimeter as of 05/26/2007 2153 hrs



