

GEORGIA BAY COMPLEX

Sweat Farm Rd. Fire
Bugaboo Scrub II Fire

Incident Action Plan

Tuesday

May 29, 2007

All Operational Periods

THE Monsters!



GEORGIA FORESTRY
COMMISSION



GEMA

| | | | |
|----------------------------|---|-----------------------------|--------------------------|
| INCIDENT OBJECTIVES | 1. Incident Name Georgia Bay Complex | 2. Date Prepared 5/28/07 | 3. Time Prepared 1830 |
| | 4. Operational Period 05/29/2007 All Operational Periods | | |

5. General Control Objectives For The Incident (Include Alternatives)

1. Provide for the safety of the public and assigned incident resources through effective hazard / risk assessment and mitigation.
2. Provide timely and accurate information updates to the GFC, cooperators, affected communities, and other stakeholders.
3. Provide accurate cost accountability and documentation of expenditures for the duration of the incident.
4. Develop and maintain coordination with local fire departments, local EOC directors, GEMA, other IMT's deployed in the area, GOAL, and private industry.
5. Provide support on initial and extended attack fires as requested by the 2 Southeast Georgia GFC districts.
6. Conduct all incident activities in a manner free of discrimination, harassment, and inappropriate behavior.
7. Keep the Sweat Farm Road and Bugaboo Scrub II fires:
 - South of US 84 (Valdosta Highway)
 - East of Antioch Church Rd.
 - North of timber company Road #29
 - East of Swamp Perimeter Rd.
8. Keep the Kneeknocker and Roundabout fires within the current established fire lines / perimeters.

6. Weather Forecast For Period

WEATHER FORECAST DAY SHIFT Tuesday: (See table for specific incident forecasts)

WEATHER: Mostly cloudy in the morning...becoming partly cloudy in the afternoon.

MAX TEMPERATURES: 85 to 88 (24 hour trend ~ same)

MIN HUMIDITY: 35 to 39 (24 hour trend ~ same)

20 FT WINDS: East wind increasing to 5 to 10 mph around 1100, then East to Southeast 8 to 12 mph with gusts to 18 mph from 1400 to 1900.

STABILITY/INVERSION: Mixing heights 5500 ft. Afternoon Dispersion index 55 to 60. Haines Index 4 (moderate). Transport winds East-Southeast 17 mph.

| | Sweat Farm Rd. | Bugaboo Scrub II | Roundabout | Knee-Knocker |
|---------------------------|-----------------------|-------------------------|-------------------|---------------------|
| <i>Max Temperature:</i> | 85-88° | 86-89° | 87-90° | 84-87° |
| <i>Min Humidity:</i> | 35 to 39% | 32-36% | 29-33% | 36-41% |
| <i>Seabreeze Passage:</i> | N/A | N/A | N/A | N/A |

7. General Safety Message

SEE ATTACHED SAFETY MESSAGE.

8. ATTACHEMENTS (X IF ATTACHED)

- | | | |
|---|--|---|
| <input checked="" type="checkbox"/> Organization List - ICS 203 | <input checked="" type="checkbox"/> Division Assignment List - ICS 204 | <input checked="" type="checkbox"/> Phone List |
| <input checked="" type="checkbox"/> Fire Behavior Forecast | <input checked="" type="checkbox"/> Air Ops Summary-ICS 220 | <input checked="" type="checkbox"/> Maps |
| <input checked="" type="checkbox"/> Weather Forecast | <input checked="" type="checkbox"/> Communications Plan - ICS 205 | <input checked="" type="checkbox"/> Unit Log- ICS 214 |
| <input checked="" type="checkbox"/> Safety Message | <input checked="" type="checkbox"/> Medical Plan - ICS 206 | <input type="checkbox"/> |
| <input checked="" type="checkbox"/> Incident Action Plan Safety Analysis -ICS 215 | <input type="checkbox"/> | <input type="checkbox"/> |

9. Prepared By (Planning Section Chief)

/S/ John Howard/Don Watson

10. Approved By (Incident Commander)

/S/ Reid Hildreth/Dan Brandon

| ORGANIZATION ASSIGNMENT LIST | | 9. | Operations Section | |
|---|---|--|--------------------------------------|------------------------------|
| 1. Incident Name | | Chief | Lee Burwell | |
| Georgia Bay Complex | | Planning Ops | John Nichols / Jeff Burns (T) | |
| 2. Date | 3. Time | a. | Sweat Farm Road Branch | |
| May 28, 2007 | 2000 | Branch Director | Buck Kline | |
| 4. Operational Period | | Branch SOFR | Ron Hamm | |
| May 29, 2007 All Operational Periods | | Division/ICT3 | A,B,C,D | D. Lachapelle |
| 5. | Division/ICT3 | Division | I,J,K | Ron Swann |
| Incident Commander | Reid Hildreth | Division | H-WA | Paul Brna |
| Deputy | Dan Brandon | Division | WQ,WR | Richard Gonzalez |
| Liason | J.Hambright/G. Thompson | Division | WW / Reed Callis | WX / Rick Witzki |
| Safety Officer | Mike Huffman / Mark Luellen | Division | WY / Aitor Bidaburu | Z / unstaffed |
| Information Officer | MacDonald / Steltz / Weston / Berglund / Pineda | Division | Night Shift | Heath Morton |
| Human Resource | Monica Schwalbach | Group | Breakout | Jonathan Wilson |
| 6. | | Group | Manor | Greg Arkle |
| Agency | Name | Group | Prep | Appling /Arnold |
| GFC District 8 | Frank Sorrells | Group | Structure Grp #1 | Dennis Keen |
| GFC District 10 | Willard Fell | Group | Fireline Maintenance | Tommy Hodges |
| GFC Protection Dept | Alan Dozier | b. | Cox Prairie Branch | |
| Charlton Co. Liason | Billy Lietch | Branch Director | Brantley McManus | |
| GEMA | Allen Robinson | Division | WG | Philip Wall |
| | | Division | WE , WF | Michelle Ekstrom |
| | | Division | WH | J. Hessel |
| | | c. | Bugaboo Scrub II Branch | |
| 7. | Planning Section | | Branch Director | Amery Wells |
| Chief | John Howard | Branch SOFR | Keith Jenkins | |
| Deputy | Don Watson (T) | Division | WI,WJ | R. Adkins |
| Resources Unit | B.Pickens / M.Cheek/ L.Chamberlain | Division | WK,WL,WM | J. Smith |
| Situation Unit | Chris Brenzel / Greg Smith (T) | Division | Night | Doug Mattox |
| Documentation Unit | Annie Lott | Group | Swing | Pete Villa |
| Demobilization Unit | Mary Lou Dozier | d. | Special Groups | |
| CTSP | Vallieries / Chadwell (T) | Group | LE/Arson | Mike Heath |
| Fire Behavior Analyst | Gary Curcio | Group | Prevention | John Warner |
| Incident Meteorologist | John Pendergrast | e. | Kneeknocker/Roundabout Branch | |
| Status/Check In | Carol O'Bryan / Chris Liv(T) | | | |
| Field Observer | White /Hurdle/Burnette/ Howell (T)/ Masten(T)/Shepherdson/Shafer | Group | Kneeknocker | Ed Keith |
| GIS | Leatherwood/Gareau/Pugh (T)/ Sumner(T)/Bernes/ Bailey | Division | Roundabout A & D | B. McCarty |
| Infrared Interperter | Lance Barnum | Division | Roundabout B & C | J. Jones |
| 8. | Logistics Section | | f. | Air Operations Branch |
| Chief | T. Cleland / T. Ruff F. LaChance (Fargo) | Air Operations Branch Director | Bob Seigler | |
| Facilities Unit | Clyde Leggins | Helibase Manager | Wayne Langston | |
| Supply Unit | Keith Walters | Air Support Supervisor | Ray Dew | |
| Food Unit | Chris Hubacker | GFC Air Operations | Mike Leverette | |
| Base Camp Manager | Knapp / Garman/ Dunets/ Whitaker | Air Tanker Coordinator | | |
| Ground Support Unit | G. Cox / M. Summers | 10. | Finance Section | |
| Ordering Manager | Travis Shidal / Benjamin Hauck | Chief | Marlene Sherrod / J. Johnson (T) | |
| Security Manager | Roger Atkinson | Incident Business Advisor | Paul Palmiotto | |
| Medical Unit | W. Williams / R. Carswell (T) | Time Unit Leader | Mavis Gragg | |
| Communications Unit | Larry Sharpe | Buying Team | Barbara Hatch | |
| Initial Attack Dispatcher | | Procurement | Sheila Head / R. Chellberg (T) | |
| Equipment Manager | Danny Hayes | Cost Unit | Chris Overman / Ron Myers | |
| | | Comp/Claims | Miguel Martinez | |
| Receiving & Distribution Manager | Jamie Logan | Prepared by (Resource Unit Leader) Bill Pickens / Michael Cheek | | |
| Equipment Manager | Danny Hayes | | | |

WEATHER FORECAST

FORECAST NO: 40

NAME OF FIRE: Georgia Bay Complex

PREDICTION FOR: Day & Night Ops

UNIT: Georgia Forestry Commission

SHIFT DATE: Tuesday 05/29/07

SIGNED: *John Pendergrast*

TIME AND DATE 1900

Incident Meteorologist

FORECAST ISSUED: 05/28/07

WEATHER DISCUSSION: Broad high pressure will remain in place over the Carolinas through Wednesday.

The main concern is:

1. East to southeast wind increasing after inversion breaks after 1100.

WEATHER FORECAST DAY SHIFT Tuesday: (See table for specific incident forecasts)

WEATHER: Mostly cloudy in the morning...becoming partly cloudy in the afternoon.

MAX TEMPERATURES: 85 to 88 (24 hour trend ~ same)

MIN HUMIDITY: 35 to 39 (24 hour trend ~ same)

20 FT WINDS: East wind increasing to 5 to 10 mph around 1100, then East to Southeast 8 to 12 mph with gusts to 18 mph from 1400 to 1900.

STABILITY/INVERSION: Mixing heights 5500 ft. Afternoon Dispersion index 55 to 60. Haines Index 4 (moderate). Transport winds East-Southeast 17 mph.

| | Sweat Farm Rd. | Bugaboo Scrub II | Roundabout | Knee-Knocker |
|--------------------|----------------|------------------|------------|--------------|
| Max Temperature: | 85-88° | 86-89° | 87-90° | 84-87° |
| Min Humidity: | 35 to 39% | 32-36% | 29-33% | 36-41% |
| Seabreeze Passage: | N/A | N/A | N/A | N/A |

WEATHER FORECAST NIGHT SHIFT TUESDAY NIGHT: Southeast winds will diminish after 9 pm.

WEATHER: Partly cloudy. Patchy fog toward sunrise.

MIN TEMPERATURES: 63 to 66.

MAX HUMIDITY: Recovery around 70 percent near hotspots and 95 to 100 percent elsewhere.

20 FT WINDS: Southeast 5 to 8 mph in the evening gradually becoming calm by 0100.

STABILITY/INVERSION: Moderate inversion below 400 ft. Smoke drift West to Northwest. Dispersion 2.

OUTLOOK FOR WEDNESDAY:

Partly cloudy and warm. High temperatures 87 to 90. Minimum RH values 29 to 33%. East winds 4 to 8 mph developing in the morning becoming Southeast 7 to 12 mph with gusts to 17 mph afternoon.

EXTENDED: THURSDAY THROUGH SUNDAY: High pressure offshore South Carolina will weaken. A front will move into the Mississippi valley Saturday and closer to the area on Sunday. Increasing southerly winds and moisture over Georgia during the weekend.

Thursday and Friday: Partly cloudy and warm. Lows in the mid 60s. Highs around 90. Min RH 32 to 36 percent. Southeast winds 5 to 10 mph with gusts to 15 mph in the afternoon. A sea breeze expected.
 Saturday: Partly cloudy. A 20 percent chance of showers or thunderstorms. Low in the Mid 60s highs in the Upper 80s. Min RH 35 to 40 percent. Afternoon winds southeast 10 mph with gusts to 15 mph.
 Sunday: Increasing cloudiness. A 30 percent chance of thunderstorms. Highs in the Upper 80s lows in the mid 60s. South to Southwest winds 5 to 10 mph.

TAILGATE BRIEFING SHEET

☐ SAFETY MESSAGE

Incident:

Georgia Bay Complex

Date:

May 29, 2007

Time:

Day & Night Shift

Major Hazards and Risks:

◦ Weather

◦ Air Operations

◦ Hydration

◦ Fire Behavior

◦ Driving

◦ Accountability

◦ Reburn Potential

◦ Snags

Temperatures will be hotter today along with lower humidity, so remain aware of what the fire is doing in your area especially, in the late afternoon. Plan and act accordingly. Maintain LCES at all times!

With additional personnel and new fireline assignments it is very important to know and account for all personnel assigned to you. ***Accountability*** is a two way street. Crews should also make the connection with their supervisor. **Personnel must receive a briefing prior to line assignments either from your Division Supervisor or a line Safety Officer. Know what to expect!**

Be alert and pay attention to the details. There are logging operations in Sweet Farm Branch using the same narrow roads as you. Watch your speed especially as you travel by others.

Reburns are still a potential. Know your escape routes and evaluate safety zones with this in mind.

Snags are present, so be alert to any in your assignment area. Trees growing in peat soils can have weakened and burnt roots due to under ground burning that may allow them to fall without warning.

With the rising temps, dehydration can occur quicker. Start hydrating early in the day before the morning briefing and continue throughout the day. Don't wait until you're thirsty to drink because it will be more difficult to recover. Rehydration is enhanced when fluids contain sodium and potassium, or when foods with these electrolytes are consumed along with fluid.

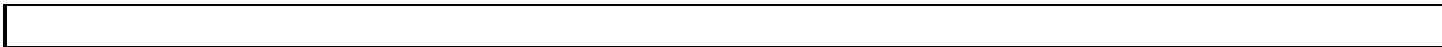
SAFETY OFFICERS: Michael Huffman, Mark Luellen, Ronnie Hamm, Harry Kepler, Steve Snider, John Orton, Larry Miller, Jerry Dombrowske, Paul Boucher, Keith Jenkins, Alan Alsobrook, Roy Leach, David Benavitch, and Tim Oliverius

Fire Order #4:

Identify escape routes and safety zones, and make them known.

Watch Out Situation # 4:

Unfamiliar with weather and local factors influencing fire behavior.



Fire Behavior Forecast

| | |
|---|---|
| <u>Forecast No. 39</u> | <u>Prediction for Sunday</u> |
| <u>Name of Fire: Ga Bay Complex /Sweat Farm Rd.</u> | <u>Operational Period: May 29, 2007</u> |
| <u>Time and Date Forecast Issued</u> <u>1800 hrs 5/28/2007</u> | <u>Signed : Gary Curcio</u> <u>Fire Behavior Analyst</u> |

Weather Summary (See Today's Detailed Weather Forecast in the IAP):

Once again the overnight **RH recovery** had no meaningful impact to fuel moistures.

Forecasted weather: windspeed today is very favorable, CALM in early AM. It will increase to E 5 to 10 mph by 1100hrs, and then E to SE 8 to 12 mph w/ G to 18 mph. This trend is somewhat warmer & drier than yesterday **but with one significant difference, the cloud cover will be of a shorter duration. This development will certainly increase the frequency of wind gusts.**

General Fire Behavior: Yesterday, there was very little expansion of the fire's perimeters. It was forecasted that no major fire runs would take place. Existing containment lines would hold even with the potential surging sea breeze. Todays expected reduction in cloud cover will generate high-risk conditions that favor new ignitions. These starts will come from spotting & originate from torching trees or reburns occurring in scorched fuel pockets. The probability of ignition is 70%.and will be most prevalent from 1400 to 1900 hrs.

The bay type drains remain the most critical fuels as well as pine plantations that possess tall (4+ft.) southern rough. These have the greatest reburn potential, torching ability, and can produce flame lengths that can contribute to spotting up to ¼ mile. Once these bay fuels start to burn, they afford the best opportunity for the fire's escape. Both these fuel types can support crown fire runs. Young pine plantations that are 5 to 8 ft tall burn as a brush fuel model. This fuel type achieves the fastest rates of spread. Below is the expected fire behavior for respective fuel models. They can assist in time distance planning for new fireline construction.

Specific Fire Behavior: Sweat Farm Fire & All Branches – Div WF, WX, WY, WW, & I.

| <u>Fuels type</u> | <u>Spread</u> | <u>Flame</u> | <u>Spotting</u> |
|---|----------------------|---------------------|------------------------|
| Young plantation 4 to 7ft tall ----- | 40ch/hr | 8 –15 ft. | 200 - 600 ft. |
| Isolated Bays with hi shrub Pine & Cypress | same | same | up to ¼ mi. |

| | | | |
|--|----------|-----------|--------------|
| Pine Plantation w/ low & sparse southern rough * | 15 ch/hr | 4 – 6 ft. | 200- 600 ft. |
|--|----------|-----------|--------------|

**note when the southern rough is > 4 ft tall these plantation are can easily support crown fire runs.*

Roundabout & Kneeknocker Fires: Yesterday's late weather & with cloud cover breaking today, these fires need to be rechecked for threat of sleepers or reburn potential.

Air Operations: Moderate inversion & the smoke can limit aircraft visibility in the morning. Smoke production is expected & very poor visibility will be in the AM as winds will be CALM. All western fire perimeters remain impacted by smoke production.

Safety: The fire behavior forecasted for today has a much higher risk for extreme fire runs. Yesterday provided relief as did the day before. Do not let the decrease in activity make us complacent,the direct sun pre-heating of forest fuels serves only to ease ignition. Fire suppression response needs to be timely and in combination with aerial suppression work in order to prevent fire starts from building and taken over the fire environment.

INCIDENT ACTION PLAN SAFETY ANALYSIS

1. Incident Name
Georgia Bay Complex

2. Date
5-29-07

3. Time
Day & Night Shift

| LCES* Analysis of Tactical Applications Lookouts Communications Escape routes Safety zones | | | | | | | | | | | Other Risk Analysis | | | | | | | | | | |
|---|-------------------|-------------------|---------------|---------------|---------------|-------|-------------|------------------|-----------------|-------------|--|---------|-------------------|----------------|----------------|-----------------|----------------------|---------------|----------------|-------------------------|---|
| Branch/ Divisions | Indirect Fireline | Burnout Operation | Anchor Points | Fire Behavior | Unburned Area | Snags | Power Lines | Reburn Potential | Road Conditions | Direct Line | LCES Mitigation's | Traffic | Fatigue/Hydration | Communications | Multi Aircraft | Heavy Equipment | Helicopter Dip Sites | Organic Soils | Accountability | Other Risk Mitigation's | |
| Sweat Farm | X | X | X | X | X | X | X | X | X | X | Lookouts posted, scout ahead for hazards, Known & identified escape routes Adequate safety zones identified Burn head lights, drive alert to traffic in the dusty conditions Scout ahead of tractor operations to avoid guy wires and poles Be aware of holiday weekend traffic | X | X | X | X | X | X | | X | | Make contact with assigned resources & know where they are. Attend Morning Briefing, Conduct tailgate briefings prior to beginning line assignment Refer to weather and safety message in IAP, post lookouts, stay away from dip sites, If you have questions-ASK! Drink adequate fluids, take frequent breaks. |
| Bugaboo Scrub II | X | X | X | X | X | X | | X | X | X | Lookouts posted, scout ahead for hazards Known & identified escape routes Adequate safety zones identified Burn head lights, drive alert to traffic in the dusty conditions Be aware of holiday weekend traffic | X | X | X | X | X | X | X | X | | Make contact with assigned resources & know where they are. Attend Morning Briefing, Conduct tailgate briefings prior to beginning line assignment Make contact with assigned resources and know where they are. Attend Morning Briefing, Tailgate briefings Refer to weather and safety message in IAP, post lookouts, stay away from dip sites, If you have questions-ASK! Drink adequate fluids, take frequent breaks. |
| Prairie Cox | X | X | X | X | X | X | | X | X | | Lookouts posted, scout ahead for hazards, Known & identified escape routes Adequate safety zones identified Burn head lights, drive alert to traffic in the dusty conditions Be aware of holiday weekend traffic | X | X | X | X | X | X | X | X | | Make contact with assigned resources & know where they are. Attend Morning Briefing, Conduct tailgate briefings prior to beginning line assignment Refer to weather and safety message in IAP, post lookouts, stay away from dip sites, If you have questions-ASK! Drink adequate fluids, take frequent breaks. Stay out of burn and avoid footing in white ash |
| Knee-knocker | X | | | X | X | X | | X | X | | Lookouts posted, scout ahead for hazards , Known & identified escape routes Adequate safety zones identified Burn head lights, drive alert to traffic in the dusty conditions Be aware of holiday weekend traffic | X | X | X | X | X | X | | X | | Make contact with assigned resources & know where they are. Attend Morning Briefing, Conduct tailgate briefings prior to beginning line assignment Refer to weather and safety message in IAP, post lookouts, stay away from dip sites, If you have questions-ASK! Drink adequate fluids, take frequent breaks. |
| Roundabout | X | | | X | X | X | | X | X | | Lookouts posted, scout ahead for hazards , Known & identified escape routes Adequate safety zones identified Burn head lights, drive alert to traffic in the dusty conditions Be aware of holiday weekend traffic | X | X | X | X | X | X | X | X | | Make contact with assigned resources & know where they are. Attend Morning Briefing, Conduct tailgate briefings prior to beginning line assignment Refer to weather and safety message in IAP, post lookouts, stay away from dip sites, If you have questions-ASK! Drink adequate fluids, take frequent breaks. |

Prepared by (Name and Position)

Michael Huffman- Safety Officer

| | | | | | | | | | |
|---|-----------|--|---|---|--------------------------------------|-------------------------------------|---|-------------------|------------------|
| DIVISION ASSIGNMENT LIST | | | | 1. Branch Sweat Farm | | 2. Division/Group A-B-C-D | | | |
| 3. Incident Name Georgia Bay Complex | | | | 4. Operational Period Date: 5-29-07 Time: 0700 - 1900 DAY | | | | | |
| 5. Operations Personnel | | | | | | | | | |
| Operations Chief | | Lee Burwell John Nichols Jeff Burns (T) | | | Division/ICT3 | | David Lachapelle O-226 5/31 912-218-7103 18*6748 John Huscke (T) | | |
| Branch Director | | Buck Kline 18*1615 | | | Safety Officer | | Larry Miller O-38 5/28 | | |
| 6. Resources Assigned this Period | | | | | | | | | |
| Strike Team/Task Force/ Resource Designator | | | Leader / Name | | Last Shift Date | Number Persons | Trans. Needed | Drop Off PT./Time | Pick Up PT./Time |
| ST#1 TNS ST Eng T6 O-1026 | | | Scott Smith | | 5/31 | 11 | N | 0700 | 2000 |
| TN Eng E-2733 | | | Long/Cantrell | | 5/31 | | N | 0700 | 2000 |
| TN Eng E-2731 | | | Harmond/Steele | | 5/31 | | N | 0700 | 2000 |
| TN Eng E-2730 | | | Wooden/Brown | | 5/31 | | N | 0700 | 2000 |
| TN Eng E-2732 | | | Hobbs/Kirby | | 5/31 | | N | 0700 | 2000 |
| ST#2 GFC ST TP T3 E-2602.1 | | | Randy Mosley | | 5/29 | 4 | N | 0700 | 2000 |
| TP GFC JD 650 E-2603 | | | Taylor | | 5/29 | | N | 0700 | 2000 |
| TP GFC JD 650 E-2604 | | | Harden | | 5/29 | | N | 0700 | 2000 |
| TP GFC JD 650 E-2605 | | | Calhoun | | 5/29 | | N | 0700 | 2000 |
| 7. Control Operations Patrol, mop up and mitigate as well respond to any threats posed by the fire. Lookout for new starts and suspicious activity and advise Branch Director | | | | | | | | | |
| 8. Special Instructions Have constant communication with logging operation in fire area: Buck Rodenberry: 912-2764990 Linc 18*5865 | | | | | | | | | |
| 9. Division/Group Communication Summary | | | | | | | | | |
| Function | Frequency | System | Channel | Function | Frequency | System | Channel | | |
| Command | | King NIFC | | Air to Ground Federal | 167.950 167.950/110.9 narrow band | King NIFC | Group 1 Ch. 12 | | |
| Tactical Div/Group | 168.200 | King NIFC | Group 1 Ch. 11 | Air to Ground Georgia | 159.390 Rx & Tx | King NIFC | Group 1 Ch. 13 | | |
| Prepared by (Resource Unit Leader) Bill Pickens / Michael Cheek | | | Approved by (Planning Section Chief) /s/John Howard / Don Watson | | | Date May 28, 2007 | | Time 1900 | |

| | | | | | | | | |
|---|-----------|--|---|--------------------------|---|---|-------------------|------------------|
| DIVISION ASSIGNMENT LIST | | | 1. Branch Sweat Farm | | 2. Division/Group I-J-K | | | |
| 3. Incident Name Georgia Bay Complex | | | 4. Operational Period Date: 5-29-07 Time: 0700 - 1900 DAY | | | | | |
| 5. Operations Personnel | | | | | | | | |
| Operations Chief | | Lee Burwell John Nichols Jeff Burns (T) | | Division/ICT3 | | Ron Swann O-264 6/3 540-969-7474 | | |
| Branch Director | | Buck Kline 18*1615 | | Safety Officer | | Steve Snider O-186 5/31 912-218-9308 | | |
| 6. Resources Assigned this Period | | | | | | | | |
| Strike Team/Task Force/ Resource Designator | | Leader / Name | | Last Shift Date | Number Persons | Trans. Needed | Drop Off PT./Time | Pick Up PT./Time |
| WT Robbins Forestry | | E-251 Frank Sallett | | 6/7 | 1 | N | 0700 | 1900 |
| ST# 18 ALS TP | | Jason Berry O-1069 | | 6/2 | 1 | N | 0700 | 1900 |
| T/P ALS T/P T3 | | E-1398 Williams / Barker | | 6/2 | 2 | N | 0700 | 1900 |
| T/P ALS DOZ. T2 | | E-1399 Berry/Bartlett | | 6/2 | 2 | N | 0700 | 1900 |
| T/P OK T/P T2 | | E-1468 Akard/Jacobs | | 6/1 | 2 | N | 0700 | 1900 |
| T/P OK T/P T2 | | E-1469 Wayman/Tunnell | | 6/1 | 2 | N | 0700 | 1900 |
| 7. Control Operations Patrol, mop up and mitigate as well as respond to any threats posed by the fire. | | | | | | | | |
| 8. Special Instructio Contact for I/A dispatches is through Incident Communications and GFC District Office LCES implemented by 1000 and notify OPS when completed | | | | | | | | |
| 9. Division/Group Communication Summary | | | | | | | | |
| Function | Frequency | System | Channel | Function | Frequency | System | Channel | |
| Command | | King NIFC | | Air to Ground Federal | 167.950 167.950/110.9 narrow band | King NIFC | Group 1 Ch. 12 | |
| Tactical Div/Group | 169.900 | King NIFC | Group 1 Ch. 10 | Air to Ground Georgia | 159.390 Rx & Tx | King NIFC | Group 1 Ch. 13 | |
| Prepared by (Resource Unit Leader) Bill Pickens / Michael Cheek | | | Approved by (Planning Section Chief) /s/John Howard / Don Watson | | | Date 5/28/07 | | Time 1900 |

| | | | | | | | | | |
|---|----------|---|---|-----------------------|---|---|-------------------|------------------|------|
| DIVISION ASSIGNMENT LIST | | | 1. Branch Sweat Farm | | 2. Division/Group H, WA | | | | |
| 3. Incident Name Georgia Bay Complex | | | 4. Operational Period Date: 5-29-07 Time: 0700 – 1900 DAY | | | | | | |
| 5. Operations Personnel | | | | | | | | | |
| Operations Chief | | Lee Burwell John Nichols Jeff Burns (T) | | Division/ICT3 | | Paul Brna 6/05 O-295 | | | |
| Branch Director | | Buck Kline 18*1615 | | Safety Officer | | Steve Snider O-186 5/31 912-218-9308 | | | |
| 6. Resources Assigned this Period | | | | | | | | | |
| Strike Team/Task Force/ Resource Designator | | Leader / Name | | Last Shift Date | Number Persons | Trans. Needed | Drop Off PT./Time | Pick Up PT./Time | |
| TFLD | | Stan Lovan | | | 1 | N | 0700 | 1900 | |
| TF# 1 SC | | B. Ballentine O-1049 | | 5/31 | 7 | N | 0700 | 1900 | |
| TP JD 700 SB | E-9006 | Boyce/Porter | | 5/31 | | N | 0700 | 1900 | |
| ENG T6 SCS | E-2737 | Connally/Heitcamp | | 5/31 | | N | 0700 | 1900 | |
| ENG T6 SCS | E-2738 | Craig/ Folk | | 5/31 | | N | 0700 | 1900 | |
| TF#3 | | | | | | | | | |
| Timberline WAT1 #2 | | Goodman | | | 1 | N | 0700 | 1900 | |
| Tender 5500 gal. WAT1 | | E-118 | Hawk / Black III | | | 1 | N | 0700 | 1900 |
| WAT2Smith #1 | | E-119 | Webb | | | 1 | N | 0700 | 1900 |
| WAT2Smith #2 | | E-180 | Smith | | | 1 | N | 0700 | 1900 |
| Smith #3 WAT2 | | E-179 | Smith | | | 1 | | 0700 | 1900 |
| Pump | | E-120 | Douglas | | | 1 | N | 0700 | 1900 |
| | | | | | | | | | |
| | | | | | | | | | |
| 7. Control Operations Hold, Monitor, and Patrol division fire lines. Mop-up all returns. | | | | | | | | | |
| 8. Special Instructions LCES implemented by 1000 and notify OPS when completed. Look out for Loggers! | | | | | | | | | |
| 9. Division/Group Communication Summary | | | | | | | | | |
| Function | | System | Channel | Function | Frequency | System | Channel | | |
| Command | | King NIFC | | Air to Ground Federal | 167.950 167.950/110.9 narrow band | King NIFC | Group 1 Ch. 12 | | |
| Tactical Div/Group | 164.1375 | King NIFC | Group 1 TAC 8 | Air to Ground Georgia | 159.390 Rx & Tx | King NIFC | Group1 Ch. 13 | | |
| Prepared by (Resource Unit Leader) Bill Pickens / Michael Cheek | | Approved by (Planning Sect. Ch.) /s/John Howard / Don Watson | | | Date May 28, 2007 | | Time 1900 | | |

| | | | | | | | |
|---|-----------|---|--|-----------------------------|---|--|---|
| DIVISION ASSIGNMENT LIST | | | 1. Branch Sweat Farm | | 2. Division/Group WQ-WR | | |
| 3. Incident Name Georgia Bay Complex | | | 4. Operational Period Date: 5/29/07 | | Time: 0700-1900 DAY | | |
| 5. Operations Personnel | | | | | | | |
| Operations Chief | | Lee Burwell/John Nichols Jeff Burns (T) | | Division/ICT3 | | Richard Gonzalez 912-218-9352 18*1250 6/5 | |
| Branch Director | | Buck Kline 18*1615 | | Safety Officer | | Andy Meadows 252-229-0161 | |
| 6. Resources Assigned this Period | | | | | | | |
| Strike Team/Task Force/ Resource Designator | | Leader / Name | | Last Shift Date | Number Persons | Trans. Needed | Drop Off PT./Time Pick Up PT./Time |
| TFLD O-334 | | Greg Vollhaber | | 6/6 | 1 | N | |
| AL DOZ T2 E-1110 | | Robinson / Taggart | | 5/31 | 2 | N | |
| AL DOZ T2 E-1109 | | Chesser / Knighten | | 5/31 | 2 | N | |
| GFC ST # 10 TP T3 O-1114 | | Byron Haire | | 6/6 | 1 | N | |
| GFC TP T3 E-8103 | | Holloway | | 6/6 | 1 | N | |
| GFC TP T3 E-2612 | | Hughes | | 6/6 | 1 | N | |
| GFC ST #16 T2 O-1260 | | Chris Roberts | | 6/10 | 1 | N | |
| TP T2 GFC E-1344 | | D. Mason | | 6/10 | 1 | N | |
| TP T2 GFC E-1345 | | M. Jones | | 6/10 | 1 | N | |
| TP T2 GFC E-1346 | | B. Anderson | | 6/10 | 1 | N | |
| TP T2 Evans 70 E-1199 | | Sykes | | | | | |
| TFLD O-282 | | Marc LeClair | | | 1 | N | |
| DOZB O-299 | | James Hartley | | 5/31 | 1 | N | |
| 7. Control Operations Improve control lines and mop up 50 ft. in. | | | | | | | |
| 8. Special Instructions Use Okefenokee Refuge North Repeater for backup Command Communications through Big Turnaround Dispatch if necessary. | | | | | | | |
| 9. Division/Group Communication Summary | | | | | | | |
| Function | Frequency | System | Channel | Function | Frequency | System | Channel |
| Command | | King NIFC | | Air to Ground Federal | 167.950 167.950/110.9 Narrow band | King NIFC | Group 1 Ch.12 |
| Tactical Div/Group | 159.285 | King NIFC | Group 1 Ch. 5 | Air to Ground Georgia IA | 159.390 | King NIFC | Group 1 Ch. 13 |
| Prepared by (Resource Unit Leader) Bill Pickens / Michael Cheek | | Approved by (Planning Section Chief) /s/John Howard / Don Watson | | Date May 28, 2007 | | Time 1900 | |

| DIVISION ASSIGNMENT LIST | | 1. Branch Sweat Farm Branch | | 2. Division/Group WW | | | |
|---|--|--|--------------------------------|-------------------------------------|--|------------------|-------------------|
| 3. Incident Name Georgia Bay Complex | | 4. Operational Period Date: 5-29-07 Time: 0700 -1900 DAY | | | | | |
| 5. Operations Personnel | | | | | | | |
| Operations Chief | Lee Burwell John Nichols Jeff Burns (T) | | Division Supervisor | Reed Callis/ David North (T) | | | |
| Branch Director | Buck Kline 18*1615 | | Safety Officer | | | | |
| 6. Resources Assigned this Period | | | | | | | |
| Strike Team/Task Force/ Resource Designator | Leader / Name | Last Shift Date | Number Persons | Trans. Needed | Drop Off PT./Time | Pick Up PT./Time | |
| TFLD | Joe Remick | | | | | | |
| | | | | | | | |
| | | | | | | | |
| | | | | | | | |
| | | | | | | | |
| | | | | | | | |
| | | | | | | | |
| | | | | | | | |
| | | | | | | | |
| | | | | | | | |
| | | | | | | | |
| | | | | | | | |
| | | | | | | | |
| | | | | | | | |
| | | | | | | | |
| | | | | | | | |
| | | | | | | | |
| | | | | | | | |
| 7. Control Operations DIVS will utilize equipment from the Breakout Group for structural triage as needed. Miscellaneous private and industry cooperators and local resources will support operations | | | | | | | |
| 8. Special Instructions . | | | | | | | |
| 9. Division/Group Communication Summary | | | | | | | |
| Function | Frequency | System | Channel | Function | Frequency | System | Channel |
| Command | | King NIFC | | Air to Ground Federal | 167.950 167.950/110.9 narrow band | King NIFC | Group 1 Ch. 12 |
| Tactical Div/Group | 164.1375 | King NIFC | Group 1 Ch. 8 | Air to Ground Georgia | 159.390 Rx & Tx | King NIFC | Group1 Ch. 13 |
| Prepared by (Resource Unit Leader) Bill Pickens / Michael Cheek | | Approved by (Planning Section Chief) /s/John Howard / Don Watson | | Date May 28, 2007 | | Time 1900 | |

| | | | | | | | | |
|---|---------|---|---|--|--------------------------------------|---|---------------------|---------------------|
| DIVISION ASSIGNMENT LIST | | | 1. Branch Sweat Farm | | 2. Division/Group WX | | | |
| 3. Incident Name Georgia Bay Complex | | | 4. Operational Period Date: 5-29-07 Time: 0700 - 1900 DAY | | | | | |
| 5. Operations Personnel | | | | | | | | |
| Operations Chief | | Lee Burwell John Nichols Jeff Burns (T) | | Division/ICT3 | | Rick Witzke 6/5 O-294 912-218-9215 18*1832 | | |
| Branch Director | | Buck Kline 18*1615 | | Branch Safety Officer Division Safety Officer | | Ron Hamm 979 268 3782 Steve Snider 912-218-9308 5/31 | | |
| 6. Resources Assigned this Period | | | | | | | | |
| Strike Team/Task Force/ Resource Designator | | Leader / Name | | Last Shift Date | Number Persons | Trans. Needed | Drop Off PT./Time | Pick Up PT./Time |
| TFLD O-341 | | Ted Mellot | | 6/10 | 1 | N | | |
| ST#19 NC ST TPL T2 E-2660 | | Jonathon Young | | 6/10 | 1 | N | Swamp Church / 0700 | Swamp Church / 1900 |
| NC TPL T2 E-2662 | | Rees/ Haywood | | 6/10 | 2 | N | Swamp Church / 0700 | Swamp Church / 1900 |
| NC TPL T2 E-2663 | | Marsh/ Buddy Love | | 6/10 | 2 | N | Swamp Church / 0700 | Swamp Church / 1900 |
| NC TPL T2 E-2664 | | McDonald / Moyer | | 6/10 | 2 | N | Swamp Church / 0700 | Swamp Church / 1900 |
| SC-FMF TP T2 E-125 | | Beasley / Avesing | | 5/31 | 2 | N | Swamp Church / 0700 | Swamp Church / 1900 |
| | | | | | | | | |
| | | | | | | | | |
| 7. Control Operations Establish new control and Improve existing lines along the fire perimeter. Control escape fire that crosses fireline. | | | | | | | | |
| 8. Special Instructions LCES implemented by 1000 and notify OPS when completed. | | | | | | | | |
| 9. Division/Group Communication Summary | | | | | | | | |
| Function | | System | Channel | Function | Frequency | System | Channel | |
| Command | | King NIFC | | Air to Ground Federal | 167.950 167.950/110.9 narrow band | King NIFC | Group 1 Ch. 12 | |
| Tactical Div/Group | 168.600 | King NIFC | Group 1 CH 7 | Air to Ground Georgia | 159.390 Rx & Tx | King NIFC | Group1 Ch. 13 | |
| Prepared by (Resource Unit Leader) Bill Pickens / Michael Cheek | | Approved by (Planning Sect. Ch.) /s/John Howard / Don Watson | | | Date May 28, 2007 | | Time 1900 | |

| | | | | | | | |
|---|---------------|---|--------------------------|---------------------------------|---|------------------|-------------------|
| DIVISION ASSIGNMENT LIST | | 1. Branch Sweat Farm Branch | | 2. Division/Group WY | | | |
| 3. Incident Name Georgia Bay Complex | | 4. Operational Period Date: 5-29-07 Time: 0700 - 1900 DAY | | | | | |
| 5. Operations Personnel | | | | | | | |
| Operations Chief | | Division Supervisor | | Aitor Bidaburu O-293 6/6 | | | |
| Branch Director | | Safety Officer | | | | | |
| 6. Resources Assigned this Period | | | | | | | |
| Strike Team/Task Force/ Resource Designator | Leader / Name | Last Shift Date | Number Persons | Trans. Needed | Drop Off PT./Time | Pick Up PT./Time | |
| unstaffed | | | | | | | |
| | | | | | | | |
| | | | | | | | |
| | | | | | | | |
| | | | | | | | |
| | | | | | | | |
| | | | | | | | |
| | | | | | | | |
| | | | | | | | |
| | | | | | | | |
| | | | | | | | |
| | | | | | | | |
| | | | | | | | |
| | | | | | | | |
| | | | | | | | |
| | | | | | | | |
| | | | | | | | |
| | | | | | | | |
| | | | | | | | |
| 7. Control Operations Monitor and Patrol fireline and perform structure triage | | | | | | | |
| 8. Special Instructions DIVS will utilize Breakout Group equipment, as available, to construct contingency fireline. Warning. Black Ankle Rd is impassable to vehicles. Do not use. | | | | | | | |
| 9. Division/Group Communication Summary | | | | | | | |
| Function | Frequency | System | Channel | Function | Frequency | System | Channel |
| Command | | King NIFC | | Air to Ground Federal | 167.950 167.950/110.9 narrow band | King NIFC | Group 1 Ch. 12 |
| Tactical Div/Group | 168.600 | King NIFC | Group 1 Ch. 7 | Air to Ground Georgia | 159.390 Rx & Tx | King NIFC | Group1 Ch. 13 |
| Prepared by (Resource Unit Leader) Bill Pickens / Michael Cheek | | Approved by (Planning Section Chief) /s/John Howard / Don Watson | | Date May 28, 2007 | | Time 1900 | |

| DIVISION ASSIGNMENT LIST | | | | 1. Branch Sweat Farm | | 2. Division/Group Z | |
|--|---------------|---|----------------------|---|--------------------------------------|-------------------------------|----------------|
| 3. Incident Name Georgia Bay Complex | | | | 4. Operational Period Date: 5-29-07 Time: 0800 - 2000 DAY | | | |
| 5. Operations Personnel | | | | | | | |
| Operations Chief | | Lee Burwell John Nichols Jeff Burns (T) | | Division/ICT3 | | | |
| Branch Director | | Buck Kline 18*1615 | | Safety Officer | | | |
| 6. Resources Assigned this Period | | | | | | | |
| Strike Team/Task Force/ Resource Designator | Leader / Name | Last Shift Date | Number Persons | Trans. Needed | Drop Off PT./Time | Pick Up PT./Time | |
| UNSTAFFED | | | | | | | |
| | | | | | | | |
| | | | | | | | |
| | | | | | | | |
| | | | | | | | |
| | | | | | | | |
| | | | | | | | |
| | | | | | | | |
| | | | | | | | |
| | | | | | | | |
| | | | | | | | |
| | | | | | | | |
| | | | | | | | |
| | | | | | | | |
| | | | | | | | |
| | | | | | | | |
| | | | | | | | |
| | | | | | | | |
| | | | | | | | |
| | | | | | | | |
| | | | | | | | |
| | | | | | | | |
| | | | | | | | |
| | | | | | | | |
| | | | | | | | |
| | | | | | | | |
| | | | | | | | |
| | | | | | | | |
| | | | | | | | |
| 7. Control Operations All Control operations for the ZULU Division will be handled by the Manor Group. | | | | | | | |
| 8. Special Instructions Have constant communication with logging operation in fire area: Buck Rodenberry: 912-2764990 Linc 18*5865 | | | | | | | |
| 9. Division/Group Communication Summary | | | | | | | |
| Function | Frequency | System | Channel | Function | Frequency | System | Channel |
| Command | | King NIFC | | Air to Ground Federal | 167.950 167.950/110.9 narrow band | King NIFC | Group 1 Ch. 12 |
| Tactical Div/Group | 164.1375 | King NIFC | Group 1 Ch. 8 | Air to Ground Georgia | 159.390 Rx & Tx | King NIFC | Group 1 Ch. 13 |
| Prepared by (Resource Unit Leader) Bill Pickens / Mike Cheek | | Approved by (Planning Section Chief) /s/John Howard / Don Watson | | Date May 28, 2007 | | Time 1900 | |

| | | | | | | | |
|---|--|---|---|--------------------------|--|------------------|-------------------|
| DIVISION ASSIGNMENT LIST | | | 1. Branch Sweat Farm | | 2. Division/Group Prep Group pg. 1 of 2 | | |
| 3. Incident Name Georgia Bay Complex | | | 4. Operational Period Date: 5/29/07 Time: 0700-1900 DAY | | | | |
| 5. Operations Personnel | | | | | | | |
| Operations Chief | Lee Burwell/John Nichols Jeff Burns | | Division/ICT3 | | Mike Appling O-223 5/30 Charles Arnold (T) O-1197 6/5 | | |
| Branch Director | Buck Kline 18*1615 | | Safety Officer | | Andy Meadows 252-229-0161 | | |
| 6. Resources Assigned this Period | | | | | | | |
| Strike Team/Task Force/ Resource Designator | Leader / Name | Last Shift Date | Number Persons | Trans. Needed | Drop Off PT./Time | Pick Up PT./Time | |
| ST # 4 GFC ST TP T3 | Jimmy Kennedy | 6/3 | 1 | N | DP 305 / 0700 | DP 305 / 1900 | |
| TP T3-GAS E-2848 | Washington / Pate | 6/3 | 2 | N | DP 305 / 0700 | DP 305 / 1900 | |
| TP T4-GAS E-2849 | Sumner / Johnson | 6/3 | 2 | N | DP 305 / 0700 | DP 305 / 1900 | |
| TP T4-GFC E-2850 | Houston / Vance | 6/3 | 2 | N | DP 305 / 0700 | DP 305 / 1900 | |
| DOZB O-343 | Robert Raade | 6/3 | 1 | N | DP 305 / 0700 | DP 305 / 1900 | |
| | | | | | | DP 305 / 1900 | |
| ST# 14 GFC STLP O-1101 | Levy Rentz | 5/31 | 6 | N | DP 305 / 0700 | DP 305 / 1900 | |
| TP T3 -GFC Worth E-1465.2 | Barwick | 5/30 | 1 | N | DP 305 / 0700 | DP 305 / 1900 | |
| TP T3-GFC Turner 70 E-2079 | Jackson | 5/31 | 1 | N | DP 305 / 0700 | DP 305 / 1900 | |
| TP T3-GFC Grady 71 E-2080 | Bulter | 5/31 | 1 | N | DP 305 / 0700 | DP 305 / 1900 | |
| | | | | | | | |
| | | | | | | | |
| | | | | | | | |
| | | | | | | | |
| | | | | | | | |
| | | | | | | | |
| | | | | | | | |
| | | | | | | | |
| 7. Control Operations Construct and improve firelines along the WW Division and WX division as directed by the OPS Chief or Branch Directed. | | | | | | | |
| 8. Special Instructions Use Okefenokee Refuge North Repeater for backup Command Communications through Big Turnaround Dispatch if necessary. | | | | | | | |
| 9. Division/Group Communication Summary | | | | | | | |
| Function | Frequency | System | Channel | Function | Frequency | System | Channel |
| Command | | King NIFC | | Air to Ground Federal | 167.950 167.950/110.9 Narrow band | King NIFC | Group 1 Ch. 12 |
| Tactical Div/Group | 168.775 | King NIFC | Group 1 TAC 9 | Air to Ground Georgia IA | 159.390 | King NIFC | Group 1 Ch. 13 |
| Prepared by (Resource Unit Leader) Bill Pickens / Michael Cheek | | Approved by (Planning Section Chief) /s/John Howard / Don Watson | | Date May 28, 2007 | | Time 1900 | |

| | | | | | | | |
|--|--|---|--------------------------|---|--|---|-------------------|
| DIVISION ASSIGNMENT LIST | | | | 1. Branch Sweat Farm | | 2. Division/Group Prep Group pg. 2 of 2 | |
| 3. Incident Name Georgia Bay Complex | | | | 4. Operational Period Date: 5/29/07 Time: 0700-1900 DAY | | | |
| 5. Operations Personnel | | | | | | | |
| Operations Chief | Lee Burwell/John Nichols Jeff Burns | | | Division/ICT3 | Mike Appling O-223 5/30 Charles Arnold (T) O-1197 6/5 | | |
| Branch Director | Buck Kline 18*1615 | | | Safety Officer | Andy Meadows 252-229-0161 | | |
| 6. Resources Assigned this Period | | | | | | | |
| Strike Team/Task Force/Resource Designator | Leader / Name | Last Shift Date | Number Persons | Trans. Needed | Drop Off PT./Time | Pick Up PT./Time | |
| TFLD / DIVS(T) O-239 | Alan Crouch | 5/31 | 1 | N | DP 305 / 0700 | DP 305 / 1900 | |
| DOZ Lee 1 (KG) E-1085 | Harold | | 1 | N | DP 305 / 0700 | DP 305 / 1900 | |
| DOZ 1 Lee (KG) E-1193 | Sermans | | 1 | N | DP 305 / 0700 | DP 305 / 1900 | |
| DOZ Timberline(KG)E-184 | Lankford | | 1 | N | DP 305 / 0700 | DP 305 / 1900 | |
| DOZ- Hancock Doz1 | Mike Hancock | | | | DP 305 / 0700 | DP 305 / 1900 | |
| DOZ2 Timberline E-1084 | Ashley | | 1 | N | DP 305 / 0700 | DP 305 / 1900 | |
| DOZ1-Biellings E-1146 | J. Bielling | | 1 | N | DP 305 / 0700 | DP 305 / 1900 | |
| DOZ1-Rowland(KG)E-1086 | Don Manning | | 1 | N | DP 305 / 0700 | DP 305 / 1900 | |
| DOZ1Rowland (KG)E-1087 | Jamie | | 1 | N | DP 305 / 0700 | DP 305 / 1900 | |
| | | | | | | | |
| ST# 3GFC ST Engines T6 E-2659 | Mike Purcell | 6/2 | 9 | N | DP 305 / 0700 | DP 305 / 1900 | |
| ENG-Pickens 86 E-1117 | Davis/Keene | 6/2 | | N | DP 305 / 0700 | DP 305 / 1900 | |
| ENG-Paulding 86 E-1098 | Cornett/Henderson | 6/2 | | N | DP 305 / 0700 | DP 305 / 1900 | |
| ENG-Heard 86 E-1015 | Bryan/Reynolds | 6/8 | | N | DP 305 / 0700 | DP 305 / 1900 | |
| ENG-Upson 86 E-1132 | Lindsey/Albritton | 6/8 | | N | DP 305 / 0700 | DP 305 / 1900 | |
| ENG-Murray 86 E-1022 | Chase/Jackson | 6/3 | 2 | N | DP 305 / 0700 | DP 305 / 1900 | |
| WAT2 N.Jenkins E-2858 | Lane/Bragg | 6/3 | 2 | N | DP 305 / 0700 | DP 305 / 1900 | |
| 7. Control Operations Prep assigned areas ahead of the fire. Assigned to WD,WX, WY, to improve and construct fireline near fire perimeter. Warning. Black Ankle Rd is impassable to vehicles. Do not use. | | | | | | | |
| 8. Special Instructions Use Okefenokee Refuge North Repeater for backup Command Communications through Big Turnaround Dispatch if necessary. GFC Engine ST#3 use Group 1 TAC 8 for communication | | | | | | | |
| 9. Division/Group Communication Summary | | | | | | | |
| Function | Frequency | System | Channel | Function | Frequency | System | Channel |
| Command | | King NIFC | | Air to Ground Federal | 167.950 167.950/110.9 Narrow band | King NIFC | Group 1 Ch. 12 |
| Tactical Div/Group | 168.775 | King NIFC | Group 1 TAC 9 | Air to Ground Georgia IA | 159.390 | King NIFC | Group 1 Ch. 13 |
| Prepared by (Resource Unit Leader) Bill Pickens / Michael Cheek | | Approved by (Planning Section Chief) /s/John Howard / Don Watson | | Date May 28, 2007 | | Time 1900 | |

| | | | | | | | | |
|--|-----------|---|---|--------------------------|--|--|-------------------|------------------|
| DIVISION ASSIGNMENT LIST | | | 1. Branch Sweat Farm | | 2. Division/Group Sweat Farm Break Out Group | | | |
| 3. Incident Name Georgia Bay Complex | | | 4. Operational Period Date: 5-29-07 Time: 0700 – 1900 DAY | | | | | |
| 5. Operations Personnel | | | | | | | | |
| Operations Chief | | Lee Burwell John Nichols Jeff Burns (T) | | Division/ICT3 | | Jonathan Wilson O-1132 912-218-2954 18*5929 | | |
| Branch Director | | Buck Kline 18*1615 | | Safety Officer | | | | |
| 6. Resources Assigned this Period | | | | | | | | |
| Strike Team/Task Force/ Resource Designator | | Leader / Name | | Last Shift Date | Number Persons | Trans. Needed | Drop Off PT./Time | Pick Up PT./Time |
| ST # 29 O-1302 | | Brad Gregory | | 6/8 | 1 | N | DP 305 / 0700 | DP 305 / 1900 |
| TP GA-GAS T3 E-2844 | | Stephens | | 6/3 | 1 | N | DP 305 / 0700 | DP 305 / 1900 |
| TP GA-GAS T3 E-2845 | | Brook | | 6/3 | 1 | N | DP 305 / 0700 | DP 305 / 1900 |
| TP GA-GAS T3 E-2846 | | Baker | | 6/3 | 1 | N | DP 305 / 0700 | DP 305 / 1900 |
| NCS DOZB E-1105 | | Strider | | 5/31 | 1 | N | DP 305 / 0700 | DP 305 / 1900 |
| TP-NCS T3 E-1106 | | Cook | | 5/31 | 1 | N | DP 305 / 0700 | DP 305 / 1900 |
| WT Robbins | | | | | 1 | N | DP 305 / 0800 | DP 305 / 2000 |
| TFLD | | Rick Kuykendall | | 6/6 | 1 | N | DP 305 / 0700 | DP 305 / 1900 |
| TFLD(T) | | Dave Grant | | 6/7 | 1 | N | DP 305 / 0700 | DP 305 / 1900 |
| EMT | | Lenny Throckmorton 804-467-9576 | | | 1 | N | 0700 | 1900 |
| EMT | | Thomas Nails | | | 1 | N | 0700 | 1900 |
| 7. Control Operations Position Equipment at DP 305 to Manage and Mitigate any Threats Posed by Uncontrolled Fires. | | | | | | | | |
| 8. Special Instruction LCES implemented by 1000 and notify OPS when completed. | | | | | | | | |
| 9. Division/Group Communication Summary | | | | | | | | |
| Function | Frequency | System | Channel | Function | Frequency | System | Channel | |
| Command | | King NIFC | | Air to Ground Federal | 167.950 167.950/110.9 Narrow band | King NIFC | Group 1 Ch. 12 | |
| Tactical Div/Group | 168.775 | King NIFC | Group 1 Ch. 9 | Air to Ground Georgia IA | 159.390 | King NIFC | Group 1 Ch. 13 | |
| Prepared by (Resource Unit Leader) Bill Pickens / Michael Cheek | | Approved by (Planning Section Chief) /s/John Howard / Don Watson | | | Date 5/28/07 | | Time 1900 | |

| | | | | | | | | |
|--|-----------|--|---|---|---|---|-------------------|------------------|
| DIVISION ASSIGNMENT LIST | | | | 1. Branch Sweat Farm | | 2. Division/Group MANOR GROUP | | |
| 3. Incident Name Georgia Bay Complex | | | | 4. Operational Period Date: 5-29-07 Time: 0700 – 1900 DAY | | | | |
| 5. Operations Personnel | | | | | | | | |
| Operations Chief | | Lee Burwell John Nichols Jeff Burns (T) | | Division/ICT3 | | Greg Arkle 912-218-7726 18*4203 | | |
| Branch Director | | Buck Kline 18*1615 | | Safety Officer | | Larry Miller O-38 5/28 912-218-9355 | | |
| 6. Resources Assigned this Period | | | | | | | | |
| Strike Team/Task Force/ Resource Designator | | Leader / Name | | Last Shift Date | Number Persons | Trans. Needed | Drop Off PT./Time | Pick Up PT./Time |
| TFLD O-317 | | Andrew Lane | | 6/6 | 1 | N | Swamp Church 0700 | Manor 1900 |
| ST# 17 | | | | | | | | |
| NMF Engine T6 E-56 | | Roybal | 6/8 | 3 | N | Swamp Church 0700 | Manor 1900 | |
| NMF Eng #236 T6 E-60 | | Housler | 6/5 | 3 | N | Swamp Church 0700 | Manor 1900 | |
| | | | | | | | | |
| | | | | | | | | |
| | | | | | | | | |
| | | | | | | | | |
| | | | | | | | | |
| | | | | | | | | |
| | | | | | | | | |
| | | | | | | | | |
| | | | | | | | | |
| 7. Control Operations Position Equipment to Manage and Mitigate any Threats Posed by Uncontrolled Fire Lookout for new starts and suspicious activity and advise Branch Director | | | | | | | | |
| 8. Special Instructions Report to Swamp Baptist Ch. Warning Black Ankle Rd is Impassable . Do not use. LCES implemented by 1000 and notify OPS when completed. | | | | | | | | |
| 9. Division/Group Communication Summary | | | | | | | | |
| Function | Frequency | System | Channel | Function | Frequency | System | Channel | |
| Command | | King NIFC | | Air to Ground Federal | 167.950 167.950/110.9 narrow band | King NIFC | Group 1 Ch 12 | |
| Tactical Div/Group | 168.200 | King NIFC | Group 1 Ch. 11 | Air to Ground Georgia IA | 159.390 Rx & Tx | King NIFC | Group 1 Ch. 13 | |
| Prepared by (Resource Unit Leader) Bill Pickens / Michael Cheek | | | Approved by (Planning Section Chief) /s/John Howard / Don Watson | | | Date May 28, 2007 | Time 1900 | |

| | | | | | | | | |
|---|-----------|---|---|--------------------------|---|---|----------------------|----------------------|
| DIVISION ASSIGNMENT LIST | | | 1. Branch Sweat Farm | | 2. Division/Group Structure Protection Group #1 | | | |
| 3. Incident Name Georgia Bay Complex | | | 4. Operational Period Date: 5-29-07 Time: 0700 - 1900 DAY | | | | | |
| 5. Operations Personnel | | | | | | | | |
| Operations Chief | | Lee Burwell John Nichols Jeff Burns (T) | | Division/ICT3 | | Dennis Keen - Ware Co. Fire Dept. 912-337-3414 Linc - 1*44*977 | | |
| Branch Director | | Buck Kline 18*1615 | | Safety Officer | | | | |
| 6. Resources Assigned this Period | | | | | | | | |
| Strike Team/Task Force/ Resource Designator | | Leader / Name | | Last Shift Date | Number Persons | Trans. Needed | Drop Off PT./Time | Pick Up PT./Time |
| GA DOC TF | | Rick Huggins 11*3204 cell 770-330-7246 | | | 1 | N | Diversion Center0700 | Diversion Center1900 |
| | | Don Shugart 54*240 | | | 1 | N | Diversion Center0700 | Diversion Center1900 |
| | | Larry Brown 11*32063 | | | 1 | N | Diversion Center0700 | Diversion Center1900 |
| GDC Wilcox T1 | | Culpepper | | | 5 | N | Diversion Center0700 | Diversion Center1900 |
| GDC Montgomery Rescue | | Helms/Sharp | | | 6 | N | Diversion Center0700 | Diversion Center1900 |
| GDC Dooly T6 | | Hudson | | | 3 | N | Diversion Center0700 | Diversion Center1900 |
| GDC Dooly WT | | | | | 2 | N | Diversion Center0700 | Diversion Center1900 |
| GDC Wayne T3 | | Horton | | | 2 | N | Diversion Center0700 | Diversion Center1900 |
| GDC Wayne T6 | | | | | 2 | N | Diversion Center0700 | Diversion Center1900 |
| GDC Wayne WT | | | | | 2 | N | Diversion Center0700 | Diversion Center1900 |
| GSP T3 | | Rogers | | | 3 | N | Diversion Center0700 | Diversion Center1900 |
| GSP Rescue | | | | | 3 | | Diversion Center0700 | Diversion Center1900 |
| GDC West GA. H/C | | Roberts | | | 8 | N | Diversion Center0700 | Diversion Center1900 |
| GDC Lee Arendale H/C | | Yearwood | | | 10 | N | Diversion Center0700 | Diversion Center1900 |
| GDC Paulding H/C | | Cox/Foley | | | 8 | N | Diversion Center0700 | Diversion Center1900 |
| 7. Control Operations Provide population/structure/infrastructure protection and preparation where needed. Continue to Gather GIS Data. Provide Mop Up around structures and support Division Mop Up. Coordinate with Red Team where applicable. Provide Firewise and Fire Prevention information to the public. Coordinate with DIVS. | | | | | | | | |
| 8. Special Instructions Way Cross Structures GEMA 40 Southern Linc 18*11049 Jessie Jordan Ware Co. FD 44*4042 912-281-6541 Ware County Fuel Tender -- Tony Leverett 912-288-3295 Dennis Keen Ware Co. Fire Dept. - 912-337-3414 Linc - 1*44*977 Clinch County Fire/EMA - Jesse Booth 18* 25*255 229-356-2348 LCES implemented by 1000 and notify OPS when completed. | | | | | | | | |
| 9. Division/Group Communication Summary | | | | | | | | |
| Function | Frequency | System | Channel | Function | Frequency | System | Channel | |
| Command | | King NIFC | | Air to Ground Federal | 167.950 167.950/110.9 narrow band | King NIFC | Group 1 Ch 12 | |
| Tactical Div/Group | 154.280 | King NIFC | Group1 Ch. 3 | Air to Ground Georgia | 159.390 Rx & Tx | King NIFC | Group 1 Ch. 13 | |
| Prepared by (Resource Unit Leader) Bill Pickens / Michael Cheek | | Approved by (Planning Section Chief) /s/John Howard / Don Watson | | | Date 5/28/07 | | Time 1900 | |

| | | | | | | | | |
|--|-----------|--|---|---|---|--|-------------------|------------------|
| DIVISION ASSIGNMENT LIST | | | | 1. Branch Sweat Farm | | 2. Division/Group Night Operations Sweat Farm | | |
| 3. Incident Name Georgia Bay Complex | | | | 4. Operational Period Date: 5-29-07 Time: 1800 – 0600 NIGHT | | | | |
| 5. Operations Personnel | | | | | | | | |
| Operations Chief | | Lee Burwell John Nichols Jeff Burns (T) | | Division | | Heath Morton 6/3 | | |
| Branch Director | | Buck Kline 18*1615 | | Safety Officer | | Pete Stewart 912-218-8965 5/27 Mark Luellen | | |
| 6. Resources Assigned this Period | | | | | | | | |
| Strike Team/Task Force/ Resource Designator | | Leader / Name | | Last Shift Date | Number Persons | Trans. Needed | Drop Off PT./Time | Pick Up PT./Time |
| ST# 21 GFC ST Tractor Plow T3 E-2714 | | Alfred Lucas O-1005 | | 5/28 | 4 | N | DP 305 | DP 305 |
| GFC TPL E-2694 O-1006 | | A. Smith | | 5/28 | | N | DP 305 | DP 305 |
| GFC TPL E-2696 O-1008 | | C. Thomas | | 5/28 | | N | DP 305 | DP 305 |
| GFC TPL E-2695 O-1007 | | D. Veal | | 5/28 | | N | DP 305 | DP 305 |
| ST# 20 T6 TFLD O-345 | | Victor Morfin | | 6/8 | 6 | N | DP 305 | DP 305 |
| TX PVT Engine E-44 | | Sims | | 5/30 | | N | DP 305 | DP 305 |
| TX PVT #701 Engine E-45 | | McInis / McInis | | 5/30 | | N | DP 305 | DP 305 |
| TXF #31 Engine E-46 | | Neill/Chumley/Martin | | 6/3 | | N | DP 305 | DP 305 |
| TX PVT Engine T6 E-47 | | Woodward / Tucker | | | 2 | N | DP 305 | DP 305 |
| Grady Co. WAT2 E-2601 | | Freeman / Faircloth | | 6/7 | 2 | N | DP 305 | DP 305 |
| 7. Control Operations Patrol and Mop Up West of Swamp Rd. Provide Structure Protection as needed. Coordinate with DIVS | | | | | | | | |
| 8. Special instructions Warning ; Black Ankle Rd is impassable. Do not use. Through ICP Communication and Waycross Communication | | | | | | | | |
| 9. Division/Group Communication Summary | | | | | | | | |
| Function | Frequency | System | Channel | Function | Frequency | System | Channel | |
| Command | | King NIFC | | Air to Ground Federal | 167.950 167.950/110.9 Narrow band | King NIFC | Group 2 Ch. 12 | |
| Tactical Div/Group | 168.050 | King NIFC | Group 1 Ch. 6 | Air to Ground Georgia IA | 159.390 | King NIFC | Group 2 Ch. 13 | |
| Prepared by (Resource Unit Leader) Bill Pickens / Mike Cheek | | | Approved by (Planning Section Chief) /s/John Howard / Don Watson | | | Date May 28, 2007 | | Time 1900 |

| | | | | | | | |
|---|--|---|--|--------------------------|---|------------------|-------------------|
| DIVISION ASSIGNMENT LIST | | | 1. Branch Cox Prairie Branch | | 2. Division/Group WG | | |
| 3. Incident Name Georgia Bay Complex | | | 4. Operational Period Date: 5/29/07 | | Time: 0800-1900 DAY | | |
| 5. Operations Personnel | | | | | | | |
| Operations Chief | Lee Burwell/John Nichols Jeff Burns (T) | | Division/ICT3 | | WE - Phillip Wall 6/5 252-229-7135 | | |
| Branch Director | Brantley McManus O-1344 | | Safety Officer | | Alan Alsobrook | | |
| 6. Resources Assigned this Period | | | | | | | |
| Strike Team/Task Force/ Resource Designator | Leader / Name | Last Shift Date | Number Persons | Trans. Needed | Drop Off PT./Time | Pick Up PT./Time | |
| GFC ST 24 STPL T3 | Randy Teal | 6/4 | 1 | N | | | |
| GFC TP T3 E-2048 | Griglen | 6/4 | 1 | N | | | |
| GFC TP T3 E-2047 | Stone | 6/4 | 1 | N | | | |
| GFC TP T3 E-1047 | Christopher | 6/4 | 1 | N | | | |
| | | | | | | | |
| | | | | | | | |
| | | | | | | | |
| | | | | | | | |
| | | | | | | | |
| | | | | | | | |
| | | | | | | | |
| 7. Control Operations Prep pine plantation, tater patching, patrol and mop up. | | | | | | | |
| 8. Special Instructions Be aware of column(s) that may develop in Okefenokee Swamp and pass along to adjoining divisions. Warning. Black Ankle is impassable to vehicle traffic. Do not use. | | | | | | | |
| 9. Division/Group Communication Summary | | | | | | | |
| Function | Frequency | System | Channel | Function | Frequency | System | Channel |
| Command | | King NIFC | | Air to Ground Federal | 167.950 167.950/110.9 Narrowband | King NIFC | Group 1 Ch. 12 |
| Tactical Div/Group | 168.200 | King NIFC | Group 1 Ch 11 | Air to Ground Georgia IA | 159.390 | King NIFC | Group 1 Ch. 13 |
| Prepared by (Resource Unit Leader) Bill Pickens / Michael Cheek | | Approved by (Planning Section Chief) /s/John Howard / Don Watson | | Date May 28, 2007 | | Time 1900 | |

| | | | | | | | | |
|---|-----------|--|--------------------------|--|---|---|-------------------|------------------|
| DIVISION ASSIGNMENT LIST | | | | 1. Branch Cox Praire Branch | | Division/Group WH page 1 of 3 | | |
| 3. Incident Name Georgia Bay Complex | | | | 4. Operational Period Date: 5/29/07 | | Time: 0800-2000 DAY | | |
| 5. Operations Personnel | | | | | | | | |
| Operations Chief | | Lee Burwell John Nichols Jeff Burns (T) | | Division Supervisor | | Joe Hessel Brad Reed (T) O-318 | | |
| Branch Director | | Brantley McManus O-1344 18*10887 912-218-9313 | | Branch Safety Officer Division Safety Officer | | Keith Jenkins 478-550-2991 Harry Kepler 912-218-8325 | | |
| 6. Resources Assigned this Period | | | | | | | | |
| Strike Team/Task Force/ Resource Designator | | Leader / Name | | Last Shift Date | Number Persons | Trans. Needed | Drop Off PT./Time | Pick Up PT./Time |
| TFLD O-334 | | Norma May | | 6/8 | 1 | N | Fargo/0800 | Fargo/2000 |
| SKID- Robbins Skidgine E-252 | | | | | 1 | N | Fargo/0800 | Fargo/2000 |
| SKID- Robbins Skidgine E-253 | | | | | 1 | N | Fargo/0800 | Fargo/2000 |
| SKID- Robbins Skidgine E-254 | | | | | 1 | N | Fargo/0800 | Fargo/2000 |
| WT Robbins 6000 gal. E-251 | | | | | 1 | N | Fargo/0800 | Fargo/2000 |
| ST #23 | | Justin Erickson | | | 1 | N | Fargo/0800 | Fargo/2000 |
| PVT Smokey Mtn. Eng6 E-43 | | Bartlett / MaMahon | | | 2 | N | Fargo/0800 | Fargo/2000 |
| GFC Eng.5 E-1016 | | Robinson/Moore | | 5/28 | 2 | N | Fargo/0800 | Fargo/2000 |
| GFC Eng.6 E-1021 | | Fowler / Barbutt | | 6/10 | 2 | N | Fargo/0800 | Fargo/2000 |
| | | | | | | | | |
| | | | | | | | | |
| | | | | | | | | |
| | | | | | | | | |
| 7. Hold perimeter at current location, improve where needed, mop up 30 ft. in and maintain control. | | | | | | | | |
| 8. Special Instructions See communications plan for closest Command Repeater to Division. Division and STPS keep Branch Director informed of status in progress. North Side of River use TAC Ch. 5 South Side of River use TAC Ch. 10 | | | | | | | | |
| 9. Division/Group Communication Summary | | | | | | | | |
| Function | Frequency | System | Channel | Function | Frequency | System | Channel | |
| Command | | King NIFC | | Air to Ground Federal | 167.950 167.950/110.9 Narrow band | King NIFC | Group 1 Ch. 12 | |
| Tactical Div/Group | 169.900 | King NIFC | Group 2 Ch 10 | Air to Ground Georgia IA | 159.390 | King NIFC | Group 1 Ch. 13 | |
| Prepared by (Resource Unit Leader) | | Approved by (Planning Section Chief) | | | Date | | Time | |
| Bill Pickens / Michael Cheek | | /s/John Howard / Don Watson | | | May 28, 2007 | | 1900 | |

| | | | | | | | |
|---|--|---|--|--|---|-------------------|-------------------|
| DIVISION ASSIGNMENT LIST | | | 1. Branch Cox Praire Branch | | 2. Division/Group WH page 2 of 3 | | |
| 3. Incident Name Georgia Bay Complex | | | 4. Operational Period Date: 5/29/07 | | Time: 0800-2000 DAY | | |
| 5. Operations Personnel | | | | | | | |
| Operations Chief | Lee Burwell John Nichols Jeff Burns (T) | | | Division Supervisor | Joe Hessel Brad Reed (T) O-318 | | |
| Branch Director | Brantley McManus O-1344 18*10887 912-218-9313 | | | Branch Safety Officer Division Safety Officer | Keith Jenkins 478-550-2991 Harry Kepler 912-218-8325 | | |
| 6. Resources Assigned this Period | | | | | | | |
| Strike Team/Task Force/ Resource Designator | Leader / Name | | Last Shift Date | Number Persons | Trans. Needed | Drop Off PT./Time | Pick Up PT./Time |
| ST# 7 LAS ST ENG | Jay Meadows O-1093 | | 6/1 | 1 | N | Fargo/0800 | Fargo/2000 |
| ENG-LAS Engine T6 E-1074 | Moseley/Carter | | 6/1 | 2 | N | Fargo/0800 | Fargo/2000 |
| ENG-LAS Engine T6 E-1071 | Wager/Holmes | | 6/1 | 2 | N | Fargo/0800 | Fargo/2000 |
| ENG-LAS Engine T6 E-1072 | West/Tichy | | 6/1 | 2 | N | Fargo/0800 | Fargo/2000 |
| ST# 8 LAS ST ENG T6 | H. Childress O-1092 | | 6/1 | 1 | N | Fargo/0800 | Fargo/2000 |
| ENG LAS Engine E-1075 | Wright/Bolyer | | 6/1 | 2 | N | Fargo/0800 | Fargo/2000 |
| ENG LAS Engine E-1070 | Mango/Hilton | | 6/1 | 2 | N | Fargo/0800 | Fargo/2000 |
| ENG LAS Engine E-1073 | Duckett/Martin | | 6/1 | 2 | N | Fargo/0800 | Fargo/2000 |
| ENG LAS Engine E-1076 | Polk/Hughes | | 6/1 | 2 | N | Fargo/0800 | Fargo/2000 |
| 7. Control Operations This includes Stephen Foster State Park. Assure hose line is in place and working. Assist with controlling fire as it progresses along the peninsula. | | | | | | | |
| 9. Special Instructions See communications plan for closest Command Repeater to Division. Division and STPS keep Branch Director informed of status in progress. North Side of River use TAC Ch. 5 South Side of River use TAC Ch. 10 | | | | | | | |
| 9. Division/Group Communication Summary | | | | | | | |
| Function | Frequency | System | Channel | Function | Frequency | System | Channel |
| Command | | King NIFC | | Air to Ground Federal | 167.950 167.950/110.9 Narrow band | King NIFC | Group 1 Ch. 12 |
| Tactical Div/Group | 169.900 | King NIFC | Group 2 Ch 10 | Air to Ground Georgia IA | 159.390 | King NIFC | Group 1 Ch. 13 |
| Prepared by (Resource Unit Leader) Bill Pickens / Michael Cheek | | Approved by (Planning Section Chief) /s/John Howard / Don Watson | | Date May 28, 2007 | | Time 1900 | |

| | | | | | | | | |
|--|-----------|---|--|--|--|---|-------------------|------------------|
| DIVISION ASSIGNMENT LIST | | | 1. Branch Cox Praire Branch | | 2. Division/Group WH page 3 of 3 | | | |
| 3. Incident Name Georgia Bay Complex | | | 4. Operational Period Date: 5/29/07 | | Time: 0800-2000 DAY | | | |
| 5. Operations Personnel | | | | | | | | |
| Operations Chief | | Lee Burwell John Nichols Jeff Burns (T) | | Division Supervisor | | Joe Hessel Brad Reed (T) O-318 | | |
| Branch Director | | Brantley McManus O-1344 18*10887 912-218-9313 | | Branch Safety Officer Division Safety Officer | | Keith Jenkins 478-550-2991 Harry Kepler 912-218-8325 | | |
| 6. Resources Assigned this Period | | | | | | | | |
| Strike Team/Task Force/ Resource Designator | | Leader / Name | | Last Shift Date | Number Persons | Trans. Needed | Drop Off PT./Time | Pick Up PT./Time |
| North Carolina Strike Team | | | | | 1 | No | Fargo/0800 | Fargo/2000 |
| ENG# 750 T6 E-5200 STPL | | Scott Sheets O-5216 | | | | | | |
| JD 750 TP 2 E-5194 | | L Mel Guthrie O-5220 | | | 1 | No | Fargo/0800 | Fargo/2000 |
| CAT D5H TP 2 E-5195 | | | | | 1 | No | Fargo/0800 | Fargo/2000 |
| CAT D5H TP 2 E-5193 | | R Ballence O-5219 | | | 1 | No | Fargo/0800 | Fargo/2000 |
| Engine Type 6 ENG# E-1592 | | Debbie Brown O-5217 | | | 1 | No | Fargo/0800 | Fargo/2000 |
| Engine Type 6 ENG# E-1591 | | Michael Spencer O-5196 | | | 1 | No | Fargo/0800 | Fargo/2000 |
| Engine Type 6 ENG# E-1590 | | | | | 1 | No | Fargo/0800 | Fargo/2000 |
| | | | | | | | | |
| ST #25 LA-LAS O-661 | | Mike Smith | | 6/6 | 5 | N | Fargo/0800 | Fargo/2000 |
| LA T/P T2 E-1102 | | Cornett / Weatherford | | 06/03 | 2 | N | Fargo/0800 | Fargo/2000 |
| LA T/P T2 E-1103 | | Marcantel / Bass | | 06/03 | 2 | N | Fargo/0800 | Fargo/2000 |
| | | | | | | | | |
| 8. Control Operations This includes Stephen Foster State Park. Assure hose line is in place and working. Assist with controlling fire as it progresses along the peninsula. | | | | | | | | |
| 10. Special Instructions See communications plan for closest Command Repeater to Division. Division and STPS keep Branch Director informed of status in progress. North Side of River use TAC Ch. 5 South Side of River use TAC Ch. 10 | | | | | | | | |
| 9. Division/Group Communication Summary | | | | | | | | |
| Function | Frequency | System | Channel | Function | Frequency | System | Channel | |
| Command | | King NIFC | | Air to Ground Federal | 167.950 167.950/110.9 Narrow band | King NIFC | Group 1 Ch. 12 | |
| Tactical Div/Group | 169.900 | King NIFC | Group 2 Ch 10 | Air to Ground Georgia IA | 159.390 | King NIFC | Group 1 Ch. 13 | |
| Prepared by (Resource Unit Leader) Bill Pickens / Michael Cheek | | Approved by (Planning Section Chief) /s/John Howard / Don Watson | | | Date May 28, 2007 | | Time 1900 | |

| | | | | | | | | |
|---|-----------|---|-------------------------|--|---|---|-------------------|------------------|
| DIVISION ASSIGNMENT LIST | | | | 1. Branch Bugaboo Scrub II | | Division/Group WI - WJ | | |
| 3. Incident Name Georgia Bay Complex | | | | 4. Operational Period Date: 5/29/07 | | Time: 0800-1900 DAY | | |
| 5. Operations Personnel | | | | | | | | |
| Operations Chief | | Lee Burwell John Nichols Jeff Burns (T) | | Division Supervisor STPS | | Ricky Adkins 912-218-9307 18*10062 Gary Waters | | |
| Branch Director | | Amery Wells | | Branch Safety Officer Division Safety Officer | | Keith Jenkins 478-550-2991 Harry Kepler 912-218-8325 | | |
| 6. Resources Assigned this Period | | | | | | | | |
| Strike Team/Task Force/ Resource Designator | | Leader / Name | | Last Shift Date | Number Persons | Trans. Needed | Drop Off PT./Time | Pick Up PT./Time |
| TFLD O-346 | | William Emery | | 5/30 | 1 | N | Fargo/0800 | Fargo/2000 |
| THSP Pump 0-1326 | | Wayne Daniels | | 6/10 | 1 | N | Fargo/0800 | Fargo/2000 |
| ST #9 STEN O-336 | | Don Thomas | | 6/7 | 1 | N | Fargo/0800 | Fargo/2000 |
| ENG-CA-INF Eng.32 T3 E-75 | | Dave Nelson | | | 5 | N | Fargo/0800 | Fargo/2000 |
| ENG- WYRAD Eng 392 T6 E-99 | | T.J. Murry | | | 3 | N | Fargo/0800 | Fargo/2000 |
| ENG- WYRSD Eng 493 T6 E-246 | | Derrick Youngerman | | | 3 | N | Fargo/0800 | Fargo/2000 |
| WT-GA DOT+1 Supervisor | | | | | 2 | N | Fargo/0800 | Fargo/2000 |
| Support Fire Eng. 6 E-12 | | Zuehlke | | 6/9 | 2 | N | Fargo/0800 | Fargo/2000 |
| 7. Control Operations Monitor fire progress along river be prepared for structure protection, patrol and mop up. | | | | | | | | |
| 8. Special Instructions See communications plan for closest Command Repeater to Division. Division and STPS keep Branch Director informed of status in progress. North Side of River use TAC Ch. 5 South Side of River use TAC Ch. 10 | | | | | | | | |
| 9. Division/Group Communication Summary | | | | | | | | |
| Function | Frequency | System | Channel | Function | Frequency | System | Channel | |
| Command | | King NIFC | | Air to Ground Federal | 167.950 167.950/110.9 Narrow band | King NIFC | Group 1 Ch. 12 | |
| Tactical Div/Group | 159.285 | King NIFC | Group 2 Ch 5 | Air to Ground Georgia IA | 159.390 | King NIFC | Group 1 Ch. 13 | |
| Prepared by (Resource Unit Leader) Bill Pickens / Michael Cheek | | Approved by (Planning Section Chief) /s/John Howard / Don Watson | | Date May 28, 2007 | | Time 1900 | | |

| | | | | | | | | |
|---|-----------|---|--------------------------|--|---|---|-------------------|-------------------|
| DIVISION ASSIGNMENT LIST | | | | 1. Branch Bugaboo Scrub II | | 2. Division/Group WK-WM | | |
| 3. Incident Name Georgia Bay Complex | | | | 4. Operational Period Date: 5/29/07 | | Time: 0800-1900 DAY | | |
| 5. Operations Personnel | | | | | | | | |
| Operations Chief | | Lee Burwell/John Nichols Jeff Burns (T) | | Division/ICT3 | | Larry Sears 6/9 O-380 | | |
| Branch Director | | Amery Wells | | Branch Safety Officer Division Safety Officer | | Keith Jenkins 478-550-2991 John Orton 912-218-4958 | | |
| 6. Resources Assigned this Period | | | | | | | | |
| Strike Team/Task Force/ Resource Designator | | Leader / Name | | Last Shift Date | Number Persons | Trans. Needed | Drop Off PT./Time | Pick Up PT./Time |
| STPL O-352 | | Robert Lutrell | | 6/10 | 1 | N | Fargo/0800 | Fargo/1900 |
| T/P -TxTxs T2 E-1452 | | Burch / Williams | | 5/30 | 2 | N | Fargo/0800 | Fargo/1900 |
| ST # 22 STEN O-584 | | Terry Quigley | | 6/10 | 1 | N | Fargo/0800 | Fargo/1900 |
| STEN(T) | | Alan Benson | | | | | | |
| ENG-Platte Canyon Z T3 E-65 | | Laurion / McDonald / Milligan | | 6/8 | 3 | N | Fargo/0800 | Fargo/1900 |
| ENG T6 COS #312 E-67 | | Roetker/McConnell | | 6/9 | 2 | N | Fargo/0800 | Fargo/1900 |
| WT- GA DOT | | | | | 1 | N | Fargo/0800 | Fargo/1900 |
| WT- GA DOT | | | | | 1 | N | Fargo/0800 | Fargo/1900 |
| | | | | | | | | |
| ST #5 | | TFLD Mike Schmidt O-289 | | 5/31 | | N | Fargo/0800 | Fargo/1900 |
| ENG- WY-CPS T6 E-101 | | Cotton/Hibert/Jones | | 6/3 | 3 | N | Fargo/0800 | Fargo/1900 |
| ENG-AZ-Brush T6 E-97 | | Albright/Price/Blake | | 6/7 | 3 | N | Fargo/0800 | Fargo/1900 |
| ENG-CO-COS T6 E-94 | | Seeley/Fitzpatrick/Mc Curry | | 6/9 | 3 | N | Fargo/0800 | Fargo/1900 |
| ENG- Platte Canyon T6 E-95 | | Sugaski/Reese/ Linnelan | | 6/8 | 3 | N | Fargo/0800 | Fargo/1900 |
| ENG-AZ-AZS T6 E-96 | | Myers/Penrod/McNeil | | 6/3 | 3 | N | Fargo/0800 | Fargo/1900 |
| 7. Control Operations Monitor reburn, suppress as needed, patrol and mop up along fire line. | | | | | | | | |
| 8. Special Instructions Keep Branch Director informed of status and progress. | | | | | | | | |
| 9. Division/Group Communication Summary | | | | | | | | |
| Function | Frequency | System | Channel | Function | Frequency | System | Channel | |
| Command | | King NIFC | | Air to Ground Federal | 167.950 167.950/110.9 Narrow band | King NIFC | Group 1 Ch. 12 | |
| Tactical Div/Group | 164.1375 | King NIFC | Group 1 Ch. 8 | Air to Ground Georgia IA | 159.390 | King NIFC | Group 1 Ch. 13 | |
| Prepared by (Resource Unit Leader) Bill Pickens / Michael Cheek | | Approved by (Planning Section Chief) /s/John Howard / Don Watson | | Date May 28, 2007 | | Time 1900 | | |

| | | | | | | | | | | |
|---|-----------|--|---|--|---|-----------------------------------|--|--------------|------------------|--|
| DIVISION ASSIGNMENT LIST | | | | 1. Branch Bugaboo Scrub | | 2. Division/Group Swing | | | | |
| 3. Incident Name Georgia Bay Complex | | | | 4. Operational Period Date: 5-29-07 | | Time: 1200 - 2400 | | | | |
| 5. Operations Personnel | | | | | | | | | | |
| Operations Chief | | Lee Burwell John Nichols Jeff Burns (T) | | | Division/ICT3 | | Pete Villa O-263 6/1 912-218-8226 18*4523 | | | |
| Branch Director | | Amery Wells | | | Safety Officer | | | | | |
| 6. Resources Assigned this Period | | | | | | | | | | |
| Strike Team/Task Force/ Resource Designator | | Leader / Name | | Last Shift Date | Number Persons | Trans. Needed | Drop Off PT./Time | | Pick Up PT./Time | |
| TF-2 STEN T6 Engine O-682 | | Mark Stinson | | 6/6 | 1 | N | DP 305 / 1200 | | DP 305 / 2400 | |
| Eng 4460 E-1181 | | Sinderud/ Bera | | 6/6 | 1 | N | DP 305 / 1200 | | DP 305 / 2400 | |
| GA-GAS ENG T6 E-2835 | | Fortenberry/Hulsey | | 6/6 | 2 | N | DP 305 / 1200 | | DP 305 / 2400 | |
| GA-GAS ENG T6 E-2834 | | Sweatman/Sisk | | 6/6 | 2 | N | DP 305 / 1200 | | DP 305 / 2400 | |
| MN PVT #6 Engine E-26 | | G. Rock-C. Tucker | | 6/1 | 2 | N | DP 305 / 1200 | | DP 305 / 2400 | |
| | | | | | | | | | | |
| TF-7 T/P E-113.3 | | Raymond Uballe | | 6/1 | 1 | N | DP 305 / 1200 | | DP 305 / 2400 | |
| TX-TXS T/P T4 E-113 | | Sides/Halloquist | | 6/1 | 2 | N | DP 305 / 1200 | | DP 305 / 2400 | |
| TX-TXS T/P T4 E-112 | | Cooke Hartstein | | 6/7 6/1 | 2 | N | DP 305 / 1200 | | DP 305 / 2400 | |
| TX-TXS T/P T4 E-114 | | Witt/Sunda | | 6/1 | 2 | N | DP 305 / 1200 | | DP 305 / 2400 | |
| | | | | | | | | | | |
| | | | | | | | | | | |
| | | | | | | | | | | |
| | | | | | | | | | | |
| | | | | | | | | | | |
| | | | | | | | | | | |
| | | | | | | | | | | |
| | | | | | | | | | | |
| | | | | | | | | | | |
| | | | | | | | | | | |
| | | | | | | | | | | |
| | | | | | | | | | | |
| 7. Control Operations Coordinate Division assignments with Branch Director and DIVS | | | | | | | | | | |
| 8. Special Instructions Remainder of resources assigned to Fargo will assist with structure protection and related activities; Clinch County Fire/EMA – Jesse Booth 25*255 919-482-3700 | | | | | | | | | | |
| 9. Division/Group Communication Summary | | | | | | | | | | |
| Function | Frequency | System | Channel | Function | Frequency | System | Channel | | | |
| Command | | King NIFC | | Air to Ground Federal | 167.950 167.950/110.9 Narrow band | King NIFC | Group 1 Ch. 12 | | | |
| Tactical Div/Group | 168.050 | King NIFC | Group 2 Ch 6 | Air to Ground Georgia IA | 159.390 | King NIFC | Group 1 Ch. 13 | | | |
| Prepared by (Resource Unit Leader) Bill Pickens / Michael Cheek | | | Approved by (Planning Section Chief) /s/John Howard / Don Watson | | | Date May 28, 2007 | | Time 1900 | | |

| | | | | | | | | |
|--|-----------|---|--|--|---|--|-------------------|------------------|
| DIVISION ASSIGNMENT LIST | | | 1. Branch Bugaboo Scrub II | | 2. Division/Group Night Shift Bugaboo | | | |
| 3. Incident Name Georgia Bay Complex | | | 4. Operational Period Date: 5-29-07 Time: 1800 -0600 NIGHT | | | | | |
| 5. Operations Personnel | | | | | | | | |
| Operations Chief | | Lee Burwell John Nichols Jeff Burns (T) | | Division/ICT3 | | Doug Mattox O-221 6/4 | | |
| Branch Director | | Amery Wells | | Branch Safety Officer Division Safety Officer | | Keith Jenkins 478-550-2991 Pete Stewart / Mark Wellen | | |
| 6. Resources Assigned this Period | | | | | | | | |
| Strike Team/Task Force/ Resource Designator | | Leader / Name | | Last Shift Date | Number Persons | Trans. Needed | Drop Off PT./Time | Pick Up PT./Time |
| S/T 28 STEN O-1240 | | George Barbee | | 6/8 | 1 | N | Fargo 1800 | Fargo 0600 |
| LA ENG T6 E-2841 | | Hall/Dunn | | 5/31 | 2 | N | Fargo 1800 | Fargo 0600 |
| VA-VAF ENG T6 E-4 | | Ramey (out of service) | | 5/26 | 3 | N | Fargo 1800 | Fargo 0600 |
| CO-PSF ENG T6 E-3 | | Howard/Banueios / Brogan | | 6/8 | 3 | N | Fargo 1800 | Fargo 0600 |
| | | | | | | | | |
| GAS STPL O-1232 | | Royce Davis | | 6/7 | 1 | N | Fargo 1800 | Fargo 0600 |
| TP T3 Mitchell 61 E-2881 | | Baird | | 6/7 | 1 | N | Fargo 1800 | Fargo 0600 |
| TP T3 Seminole 71 E-2880 | | Green | | 6/7 | 1 | N | Fargo 1800 | Fargo 0600 |
| TP T3 Brooks 72 E-2882 | | Hugleso | | 6/7 | 1 | N | Fargo 1800 | Fargo 0600 |
| | | | | | | | | |
| | | | | | | | | |
| | | | | | | | | |
| 7. Control Operations | | | | | | | | |
| Patrol and Mop Up West of Swamp Rd. Provide Structure Protection as needed. Coordinate with DIVS | | | | | | | | |
| 8. Special Instructions | | | | | | | | |
| Remainder of resources assigned to Fargo will assist with structure protection and related activities; Clinch County Fire/EMA – Jesse Booth 25*255 919-482-3700 | | | | | | | | |
| 9. Division/Group Communication Summary | | | | | | | | |
| Function | Frequency | System | Channel | Function | Frequency | System | Channel | |
| Command | | King NIFC | | Air to Ground Federal | 167.950 167.950/110.9 Narrow band | King NIFC | Group 1 Ch. 12 | |
| Tactical Div/Group | 168.775 | King NIFC | Group 2 CH 9 | Air to Ground Georgia IA | 159.390 | King NIFC | Group 1 Ch. 13 | |
| Prepared by (Resource Unit Leader) Bill Pickens / Michael Cheek | | Approved by (Planning Section Chief) /s/John Howard / Don Watson | | | Date May 28, 2007 | | Time 1900 | |

| | | | | | | | |
|---|--|---|----------------|--|---|--|-------------------|
| DIVISION ASSIGNMENT LIST | | | | 1. Branch Bugaboo Scrub II | | 2. Division/Group Fireline Maintenance Group | |
| 3. Incident Name Georgia Bay Complex | | | | 4. Operational Period Date: 5/29/07 | | Time: 0800-1900 DAY | |
| 5. Operations Personnel | | | | | | | |
| Operations Chief | Lee Burwell/John Nichols Jeff Burns (T) | | | Division/ICT3 | | | |
| Branch Director | Buck Kline 18*1615 | | | Safety Officer | | | |
| 6. Resources Assigned this Period | | | | | | | |
| Strike Team/Task Force/ Resource Designator | Leader / Name | Last Shift Date | Number Persons | Trans. Needed | Drop Off PT./Time | Pick Up PT./Time | |
| TIMBERLINE HARROW #1 E-2836 | Tommy Hodges | 6/4/07 | 1 | N | 0700 | 1900 | |
| TIMBERLINE HARROW #2 E-2837 | TBD | | 1 | N | 0700 | 1900 | |
| TIMBERLINE HARROW #3 E-2838 | TBD | | 1 | N | 0700 | 1900 | |
| TIMBERLINE HARROW #4 E-2839 | TBD | | 1 | N | 0700 | 1900 | |
| TIMBERLINE HARROW #5 E-2840 | TBD | | 1 | N | 0700 | 1900 | |
| | | | | | | | |
| | | | | | | | |
| | | | | | | | |
| 7. Control Operations Maintain fireline as needed by branch director. | | | | | | | |
| 8. Special Instructions Use Okefenokee Refuge North Repeater for backup Command Communications through Big Turnaround Dispatch if necessary. | | | | | | | |
| 9. Division/Group Communication Summary | | | | | | | |
| Function | Frequency | System | Channel | Function | Frequency | System | Channel |
| Command | | King NIFC | | Air to Ground Federal | 167.950 167.950/110.9 Narrow band | King NIFC | Group 1 Ch.12 |
| Tactical Div/Group | | King NIFC | | Air to Ground Georgia IA | 159.390 | King NIFC | Group 1 Ch. 13 |
| Prepared by (Resource Unit Leader) Bill Pickens / Michael Cheek | | Approved by (Planning Section Chief) /s/John Howard / Don Watson | | Date May 28, 2007 | | Time 1900 | |

| | | | |
|---|------------------------------|---|-----------------------------------|
| ORGANIZATION ASSIGNMENT LIST | | 9. Operations Section | |
| 1. Incident Name | | Chief | Lee Burwell |
| Georgia Bay Complex, Kneeknocker and Roundabout | | Chief | John Nichols |
| 2. Date | 3. Time | a. Branch Kneeknocker - Divisions/Groups | |
| May 28, 2007 | 1700 | Operations BD | |
| | | Technical Specialist | Barry Chesser |
| 4. Operational Period | | | |
| May 29, 2007 0800-2000 Day Shift | | Division/Group | Kneeknocker Ed Keith |
| 5. Incident Commander and Staff | | | |
| Incident Commander | Reid Hildreth | | |
| Deputy | Dan Brandon | | |
| Safety Officer | J. Dombrowske, P. Boucher | | |
| Camp IC (MUCS) | Matt Plagenz | | |
| 6. Agency Representatives | | | |
| Agency | Name | | |
| GFC District 8 | Frank Sorrells | | |
| GFC District 10 | Willard Fell | | |
| GFC Protection Dept. | Alan Dozier | | |
| GEMA | Alan Robinson | b. Branch Roundabout - Divisions/Groups | |
| | | Operations BD | |
| | | Technical Specialist | |
| 7. Planning Section | | | |
| Chief | John Howard | | |
| | | Division/Group | A/D Rufus Crutchfield |
| Resource Unit | Bill Widrig | Division/Group | B/C Lucky Jones/H. Kibbe |
| Situation Unit | | Division/Group | |
| | | Division/Group | |
| Status Check-in | Chris Liv (t) | Breakout Task Force 1 | |
| Computer Tech | Gary Vallieres | c. Branch III - Divisions/Groups | |
| Documentation Unit | Annie Lott | Branch Director | |
| Fire Investigator | | Deputy | |
| Demob Unit | Dennis Sharp | Division/Group | |
| GIS | | Division/Group | |
| Infrared Interpreter | | Division/Group | |
| | | Division/Group | |
| 8. Logistics Section | | d. Air Operations Branch | |
| Chief | Troy Cleland | Air Operations BD | Bob Seigler |
| Chief (t) | Travis Ruff | Air Attack Supervisor | |
| Supply Unit | Keith Walters | Air Support Supervisor | |
| Ground Support | Dick McManus | | |
| Facilities Unit | | | |
| Food Unit | | GFC Air Operations | Mike Leverette |
| Base Camp Manager | | Air Tanker Coordinator | Rick Gicla |
| Ordering Manager | | 10. Finance Section | |
| Equipment Manager | | Chief | Robin Nimura |
| Communications Unit | Adam Koeller | Deputy | |
| Technical Specialist | | Time Unit Leader | Paula Stevens/Vern Lowther (T) |
| Driver | | Equipment Time Recorder | |
| | | Personnel Timer Recorder | |
| | | Comp / Claims / Cost Procurement | Eileen Crouse Steven Teves (t) |
| Admin. Asst. | Kim Cohen (Kneeknocker) | Prepared by (Resource Unit Leader) | |
| Admin. Asst. | Jessica Giddens (Roundabout) | Bill Widrig | |

| | | | | | | | |
|--|--|---|-----------------|---|--------------------|----------------------------------|-----------|
| DIVISION ASSIGNMENT LIST | | 1. Branch Kneeknocker | | 2. Division/Group All Divisions | | | |
| 3. Incident Name Georgia Bay Complex | | 4. Operational Period Date: 05/29/2007 Time: 0800-2000 | | | | | |
| 5. Operations Personnel | | | | | | | |
| Operations Branch Director | | Technical Specialist (RA) | | Barry Chesser | | | |
| Group Supervisor | | Ed Keith (6/8) O-422 1*18*1628 | | Safety Officer Paul Boucher | | | |
| 6. Resources Assigned This Period | | | | | | | |
| Strike Team/Task Force/ Resource Designator | Leader | Number Persons | Trans Needed | Drop Off PT/Time | Pick Up PT/Time | | |
| STEN | Tom Crews (STEN) | (5/30) 1 | No | Fireline 0900 | Fireline1900 | | |
| Colorado Type 6 ENG San Isabel NF E-9 | Chad Buser (ENGB) Mark Leeper (ENGB (t)) Molly Purnell | (6/9) 3 | No | Fireline 0900 | Fireline1900 | | |
| Arizona T6 Lakeside Brush 212 E-12 | Dennis Stern (ENGB) Nick Cruze Jason Thomas | (6/9) 3 | No | Fireline 0900 | Fireline1900 | | |
| Colorado T6 E-14 Upper Pine Brush 66 | Paul Black (ENGB) Tyler Chenowetch | (6/10) 2 | No | Fireline 0900 | Fireline1900 | | |
| | | | | | | | |
| TFPL | Brian Hendrix O-5224 936-546-1774 | (6/3) 1 | No | Fireline 0900 | Fireline1900 | | |
| Breakout | | | | | | | |
| TX JD750 – 1 E-1453 | Mike Mitchell (5/30) Dee Bell (5/30) | 2 | No | Fireline 0900 | Fireline1900 | | |
| TX JD650 – 2 E-1376 | Ron Ethridge (6/8) Chris Rhoades (6/8) | 2 | No | Fireline 0900 | Fireline1900 | | |
| | | | | | | | |
| | | | | | | | |
| | | | | | | | |
| | | | | | | | |
| 7. Operations Hold line, improve mop up, and monitor fire activity for Kneeknocker using resources and MUC 4 if available. | | | | | | | |
| 8. Special Instructions For Air Support use the following UTM Coordinates: Kneeknocker E 04014, N 34558 For structure protection call 911! | | | | | | | |
| 9. Division/Group Communication Summary | | | | | | | |
| Function | Frequency | System | Channel | Function | Frequency | System | Channel |
| Command | | | | Logistics | | | |
| Tactical Div/Group | 168.200 | GRP 3 Tactical | 8 | Air to Ground | 169.200 | | 12 |
| Prepared By (Resource Unit Leader) Bill Widrig ICS 204 | | Approved By (Planning Sect. Ch.) /s/ John Howard | | Date 05/28/07 | | Time 1730 NFES 1328 | |

| | | | | | | | |
|--|----------------|--|--|--|--------------------------|---------------------------------|----------------------|
| DIVISION ASSIGNMENT LIST | | | | 1. Branch Roundabout | | 2. Division/Group A/D | |
| 3. Incident Name Georgia Bay Complex | | | | 4. Operational Period Date: 05/29/2007 Time: 0800- 2000 | | | |
| 5. Operations Personnel | | | | | | | |
| Ops Branch Director | | | | Division/Group Supervisor | | Rufus Crutchfield (6/4) | |
| Technical Specialist (RA) | | | | Safety Officer | | Jerry Dombrowske | |
| 6. Resources Assigned this Period | | | | | | | |
| Strike Team/Task Force/ Resource Designator | | Leader | | Number Persons | Trans. Needed | Drop Off PT./Time | Pick Up PT./Time |
| ARK STPL | | Eric Smith 1*18*9200 | | (6-5) 1 | No | Fireline 0900 | Fireline 2000 |
| ARK JD 650 DOZ4 SO-22831 | | D. Pope/ R. Lane | | (5-31) 2 | No | Fireline 0900 | Fireline 2000 |
| ARK CAT D-5G DOZ3 SO-23568 | | J. Johnston/ T. Phillips | | (5-31) 2 | No | Fireline 0900 | Fireline 2000 |
| ARK Cat D-5 LGP DOZ3 SO-23562 | | J. Hoopengartner/ J. Williams | | (5-31) 2 | No | Fireline 0900 | Fireline 2000 |
| | | | | | | | |
| TFLD | | Tommy Williams | | (5-30) 1 | No | Fireline 0900 | Fireline 2000 |
| Wildland Engine T3 E-2055 Gun-runner Skidgine | | Randal Frasier | | 2 | No | Fireline 0900 | Fireline 2000 |
| GA Twiggs 86 T-6 ENG | | Larry Rowland Bledsoe | | (5-30) 2 | No | Fireline 0900 | Fireline 2000 |
| GA Peach 86 T-6 ENG | | Nick Tresco Danny Gore | | (6/5) 2 (6/6) | No | Fireline 0900 | Fireline 2000 |
| | | | | | | | |
| 7. Control Operations Hold containment lines, improve mop up into edge of bays, address hot spots, and monitor fire activity. | | | | | | | |
| 8. Special Instructions Do not drive on canal roads due to under burning and falling trees. Be aware of snags and other hazards. For Air Support use the following UTM Coordinates 315206 East 3463551 North. For Structure Protection Support/Engines Call 911. | | | | | | | |
| 9. Division/Group Communication Summary | | | | | | | |
| Function | Frequency | System | Channel | Function | Frequency | System | Channel |
| Command | | King NIFC | | Logistics | | King NIFC | |
| Tactical Div/Group | 168.775 | King NIFC | USFS 9 GRP 3 Tactical 6 | Air to Ground | 169.200 | King NIFC | 12 |
| Prepared by (Resource Unit Ldr.) Bill Widrig | | Approved by (Planning Sect. Ch.) /s/ John Howard | | | Date 5/28/2007 | | Time 2000 |

| | | | | | | | |
|--|----------------|--|--|--|--------------------------|--|----------------------|
| DIVISION ASSIGNMENT LIST | | | | 1. Branch Roundabout | | 2. Division/Group B/C | |
| 3. Incident Name Georgia Bay Complex | | | | 4. Operational Period Date: 5/29/2007 Time: 0800 - 2000 | | | |
| 5. Operations Personnel | | | | | | | |
| Ops Branch Director | | | | Division/Group Supervisor | | Lucky Jones 1*18* 5198 Harold Kibbe | |
| Technical Specialist (RA) | | | | Safety Officer | | Jerry Dombrowske (extended) | |
| 6. Resources Assigned this Period | | | | | | | |
| Strike Team/Task Force/ Resource Designator | | Leader | | Number Persons | Trans. Needed | Drop Off PT./Time | Pick Up PT./Time |
| Oklahoma Type 6 ENG BIA #8661 E-5 | | Jerry Fletcher Ron Fields Clyde Crosnoe | | (6/2) 3 | No | Fireline 0900 | Fireline 2000 |
| JD Track Hoe | | Quinton Dillingham | | 1 | No | Fireline 0900 | Fireline 2000 |
| GA DOT 5000 gal. Water Tender | | Chad Sowell | | 1 | No | Fireline 0900 | Fireline 2000 |
| | | | | | | | |
| | | | | | | | |
| | | | | | | | |
| 7. Control Operations Hold containment lines, improve mop up into edge of bays, address hot spots, and monitor fire activity. | | | | | | | |
| 8. Special Instructions Do not drive on canal roads due to under burning and falling trees. Be aware of snags and other hazards. For Air Support use the following UTM Coordinates 315206 East 3463551 North. For Structure Protection Support/Engines Call 911. | | | | | | | |
| 9. Division/Group Communication Summary | | | | | | | |
| Function | Frequency | System | Channel | Function | Frequency | System | Channel |
| Command | | King NIFC | | Logistics | | King NIFC | |
| Tactical Div/Group | 169.900 | King NIFC | USFS 9 GRP 3 Tactical 7 | Air to Ground | 169.200 | King NIFC | 12 |
| Prepared by (Resource Unit Ldr.) Bill Widrig | | Approved by (Planning Sect. Ch.) /s/ John Howard | | | Date 5/28/2007 | | Time 2000 |

| | | | | | | | |
|--|----------------------------------|--|---|---------------------------|---------------------------------------|------------------------------------|------------------------------------|
| DIVISION ASSIGNMENT LIST | | | 1. Branch Roundabout | | 2. Division/Group Breakout | | |
| 3. Incident Name Georgia Bay Complex | | | 4. Operational Period Date: 5/29/2007 Time: 0800– 2000 | | | | |
| 5. Operations Personnel | | | | | | | |
| Ops Branch Director | | | | Division/Group Supervisor | | | |
| Technical Specialist (RA) | | | | Safety Officer | | Jerry Dombrowske | |
| 6. Resources Assigned this Period | | | | | | | |
| Strike Team/Task Force/ Resource Designator | | Leader | | Number Persons | Trans. Needed | Drop Off PT./Time | Pick Up PT./Time |
| GA Cat D4H DOZ3 Barrien 72 | | Josh Rowen | | 1 | No | Roundabout Stage / 0900 | Roundabout Stage / 2000 |
| GA JD 750C DOZ2 Ware 71 | | Hilton Bennett | | 1 | No | Roundabout Stage / 0900 | Roundabout Stage / 2000 |
| GA JD 750C DOZ2 Echols 70 | | Greame Treloar | | 1 | No | Roundabout Stage / 0900 | Roundabout Stage / 2000 |
| | | | | | | | |
| | | | | | | | |
| | | | | | | | |
| | | | | | | | |
| 7. Control Operations Task Force 1: Respond to and suppress breakouts and spot overs on the Roundabout fire. Stage at Roundabout Staging area and wait dispatching. Should be readily available for suppressing breakouts on the Roundabout fire within 3 minutes after dispatch. | | | | | | | |
| 8. Special Instructions For Air Support use the following UTM Coordinates 315206 East 3463551 North For Structure Protection Support/Engines for Roundabout fire Call 911 : Also notify David Moore EMA IC (Linc# 1*11*4801) or Diane May GEMA Coordinator (Linc# 1*11*4818) | | | | | | | |
| 9. Division/Group Communication Summary | | | | | | | |
| Function | Frequency | System | Channel | Function | Frequency | System | Channel |
| Mobile to Mobile | 159.390 | King NIFC | Group 3 1 | Logistics | | King NIFC | |
| Mobile to Base | 159.390 Rx 159.225 Tx | King NIFC | Group 3 2 | Air to Ground | 169.200 | King NIFC | 12 |
| Prepared by (Resource Unit Ldr.) Bill Widrig | | Approved by (Planning Sect. Ch.) /s/ John Howard | | | Date 5/28/2007 | | Time 2000 |

| NAME | POSITION | PHONE NUMBERS | FAX NUMBERS |
|-----------------------------------|------------------------|--------------------------------|----------------------|
| Macon Extended Dispatch | | 478-751-3533 | |
| Greg Strenkowski (Macon Extended) | | 478-751-3492 | |
| Alan Dozier (GFC Protection) | | 478-751-3490 | |
| Waycross—OPS & Air OPS | | 912-285-6039 | 912-285-6014 |
| Kneeknocker ICP | Linc 1*18*11583 | 912-462-5185 | 912-462-5189 |
| Roundabout ICP | Linc 1*18*1001 | 912-422-3140 | 912-422-6260 |
| Nahunta ICP | Linc 1*18*11583 | | |
| Roger Browning | MUCO OSC | 478-361-1962 | Linc 1*18*169 |
| OTHER AGENCIES | | PHONE # | SOUTHERN LINK |
| GFC Waycross District Office | Jeremy Kent | 912-287-4915 | |
| Brantley County Fire Coordinator | Ken Lee | 912-218-2012 | Linc 1*44*1081 |
| Nahunta FD Fire Chief | Button Lee | 912-717-3330 / 904-699-1619 | Linc 1*25*323 |
| EMA / 911 Director | Billy Lartz | 912-282-8730 / 912-217-1638 | Linc 1*11*2001 |
| Brantley County Sheriff | Robert Thomas | 912-614-1658 | Linc 1*25*1130 |
| DNR ENGB, Terry Trowbridge | T. Trowbridge | (C) 912-223-2815 | |
| DNR ENOP | Sam Williams | 229-212-0124 | |
| Atkinson EMA IC | David Moore | | Linc 1*11*4801 |
| Atkinson GEMA Coordinator | Diane May | | Linc 1*11*4818 |
| COMMAND | | 912-285-6046 | |
| Reid Hildreth | IC | 912-285-6046 | Linc 1*18*1178 |
| Paul Boucher (Kneeknocker) | SOF | 505-574-2064 | |
| Jerry Dombrowske (Roundabout) | SOF | 912-218-9400 | Linc 1*18*10120 |
| PLANS | | 912-462-5185 | |
| Bill Widrig | RESL | 912-462-5185 | |
| James Kent | SITL | | Linc 1*46*2535 |
| Dennis Sharp | DMOB | 501-337-3130 fax 912-285-6079 | 912-285-6014 |
| | SCKN | | |
| Gary Vallieres | CTSP | 478-550-2996 | |
| LOGISTICS | | 912-462-5288 | |
| | Dispatch | 912-462-5611 | |
| Rob Deyo | Driver | 540-460-5396 | |
| | ORDM | 912-462-5288 | |
| Dick McManus | GSUL | 478-550-3001 | |
| Dick McManus | FACL | 478-550-3001 | |
| | BCM | | Linc 1*18*4677 |
| OPERATIONS Kneeknocker | | 912-462-5185 | |
| Barry Chesser (Kneeknocker) | Technical Specialist | 912-218-6552 | Linc 1*18*4166 |
| Ed Keith | DIVS | | Linc 1*18*1628 |
| Brian Hendrix | STEN | 936-546-1774 | Linc 1*18*4279 |
| | | | |
| Tom Crews | STEN | 404-535-2226 | Linc 1*18*11725 |
| | | | |
| OPERATIONS Roundabout | | 912-422-3140 | |
| | Technical Specialist | | Linc 1*18*20684 |
| | OPD | | |
| | | | Linc 1*18*4755 |
| | | | |
| Eric Smith | STPL | | Linc 1*18*9200 |
| | | | |
| Rufus Crutchfield | DIVS | | Linc 1*18*12585 |
| Lucky Jones | DIVS | | Linc 1*18*5198 |
| FINANCE | | 478-550-2982 or 2995 | 912-285-6014 |

| | | 1. Branch | | 2. Division/Group Law Enforcement / Arson Group | | | |
|---|-----------------|---|-------------------|---|-------------------|------------------|---------|
| 3. Incident Name Georgia Bay Complex | | 4. Operational Period Date: 5-29-07 Time: 0700 - 2000 | | | | | |
| 5. Operations Personnel | | | | | | | |
| Operations Chief | | LE TEAM Leader | | Brian Richards 912-218-9312 18*10639 | | | |
| Branch Director | | Safety Officer | | | | | |
| 6. Resources Assigned this Period | | | | | | | |
| Strike Team/Task Force/ Resource Designator | Leader / Name | Last Shift Date | Number Persons | Trans. Needed | Drop Off PT./Time | Pick Up PT./Time | |
| G.B.I | Tom Crawford | | 1 | N | 0700 | 2000 | |
| GA. Fire Marshal | Brian Clavier | | 1 | N | 0700 | 2000 | |
| V DOF | Blair Dalton | | 1 | N | 0700 | 2000 | |
| V DOF | Dennis Gaston | | 1 | N | 0700 | 2000 | |
| V DOF | John Pine | | 1 | N | 0700 | 2000 | |
| V DOF | Chris Owens | | 1 | | | | |
| LAS | Jim Baldwin | | 1 | N | 0700 | 2000 | |
| LAS | Mark Singleton | | 1 | N | 0700 | 2000 | |
| Wv DOF | Leo Lester | | 1 | N | 0700 | 2000 | |
| WV DOF | Art Yagel | | 1 | N | 0700 | 2000 | |
| TN DOF | Greg Whitehead | | 1 | N | 0700 | 2000 | |
| TN DOF | Pete Merz | | 1 | N | 0700 | 2000 | |
| MS DOF | Matt Steed | | 1 | N | 0700 | 2000 | |
| PA DOF | Lee Jordan | | 1 | N | 0700 | 2000 | |
| PA DOF | Robert McJillan | | 1 | N | 0700 | 2000 | |
| 7. Control Operations Immediately report suspicious activity directly to Brian Richards | | | | | | | |
| 8. Special Instructions See Comm Plan for Frequency assigned to Div team is located at. | | | | | | | |
| 9. Division/Group Communication Summary | | | | | | | |
| Function | Frequency | System | Channel | Function | Frequency | System | Channel |
| Command | | King NIFC | | Logistics | | King NIFC | |
| Tactical Div/Group | | King NIFC | | Air to Ground | | King NIFC | |
| Prepared by (Resource Unit Leader) Bill Pickens / Mike Cheek | | Approved by (Planning Section Chief) /s/John Howard / Don Watson | | Date May 28, 2007 | | Time 1900 | |

| | | | | | | | |
|---|----------------------|--|-------------------|--|-------------------|------------------|---------|
| DIVISION ASSIGNMENT LIST | | 1. Branch Sweat Farm Fire | | 2. Division/Group Prevention Team Task Force | | | |
| 3. Incident Name Georgia Bay Complex | | 4. Operational Period Date: 5-29-07 Time: 06:30 - 2200 | | | | | |
| 5. Operations Personnel | | | | | | | |
| Operations Chief | | | | Division/ICT3 | | | |
| Branch Director | | | | Safety Officer | | | |
| 6. Resources Assigned this Period | | | | | | | |
| Strike Team/Task Force/ Resource Designator | Leader / Name | Last Shift Date | Number Persons | Trans. Needed | Drop Off PT./Time | Pick Up PT./Time | |
| Team Leader | John R. Warner O-177 | 05/28 | | | | | |
| Team Member | | | | | | | |
| Team Liaison Officer GA | Roger Lane O-580 | 05/30 | | | | | |
| Team Leader - GFC | Gayle Slauson* O-581 | 06/15 | | | | | |
| Team Member | Cindy Frenzel O-350 | 06/09 | | | | | |
| 7. Control Operations | | | | | | | |
| John Warner - demob 05/28/07 | | | | | | | |
| 8. Special Instructions | | | | | | | |
| <ol style="list-style-type: none"> 1. Work closely with the GA Arson Task Force on distribution of materials in area affected by arson fires or questionable starts. Planning for a Tuesday meeting with both teams to working focusing efforts 2. Transition new team members and leader in and finalize documentation at IMT 3. Review team accomplishments, expected staffing needs, goals, targets for next two weeks 4. Photographs of interface homes and structures safed from fire by Firewise practices – send to Alan Dozier ASAP 5. Tie in and work closely with lead PIOs and Liaisons with NCIMT and Southwest IMT concerning fire occurrences, community preparedness, evacuation planning, town hall meetings for areas affected by continuing wildfire danger 6. Information flyers developed and mailed to Sharon Dolliver for GA branding, return products hopefully by Wednesday, May 30 | | | | | | | |
| 9. Division/Group Communication Summary | | | | | | | |
| Function | Frequency | System | Channel | Function | Frequency | System | Channel |
| Command | | King NIFC | | Logistics | | King NIFC | |
| Tactical Div/Group | | King NIFC | | Air to Ground | | King NIFC | |
| Prepared by (Resource Unit Leader) Bill Pickens / Mike Cheek | | Approved by (Planning Section Chief) /s/ John Howard / Don Watson | | Date 5/28/07 | | Time 1900 | |

| AIR OPERATIONS SUMMARY | | PREPARED BY: Bob Seigler | PREPARED DATE/TIME 5/28/07 1900 | | | |
|--|--|--|---|--|---|--|
| 1. INCIDENT NAME: Georgia Bay Complex | | 2. OPERATIONAL PERIOD: Day Shift 5/29/07 | START TIME: 0700 | END TIME: 2000 | SUNRISE: 0627 | SUNSET: 2026 |
| 3. REMARKS (Safety Notes, Hazards, Air Operations Special Equipment, etc.): Waycross Helibase—31 14.95 X 82 23.73 Pogo Helibase-30 44.25 X 82 07.69 Braganza Helispot 31 07.23 X 82 15.23 AIR TANKER REQUESTS THRU POGO <ul style="list-style-type: none"> • Avoid take-off / landing over ICP • All dispatches will come through the ICP in Waycross for state aviation resources. • High Towers in Area, • LOOK UP, LOOK DOWN, LOOK ALL AROUND • Aircraft Dispatching Priorities: <ul style="list-style-type: none"> 1. Life 2. Structures Threatened 3. Initial Attack 4. Fire threatening perimeter control lines | | | | 4. MEDEVAC A/C: N17HX—Pogo Helibase | | 5. TFR: In Place Radius: Rectangle to 3000 MSL_ Altitude: 3000= MSL NW corner Lat 31 09 02 Long 82 32 04 SE corner Lat 30 53 17 Long 82 02 48: |
| 6. PERSONNEL | | Phone | 7. FREQUENCIES | AM | FM | 8. FIXED-WING # Avail / Type/ Make-Model / FAA N# / Base(s) |
| AOBD: Bob Seigler | | 828-231-4560 ICP FAX: 912-285-6014 | AIR/AIR FW: | 122.575 E/sd 122.825 scdry 122.925 GA IA 123.125 W/sd | | Airtankers @ LCQ & OCF T-06 / OCF T-20 / OCF T-22 / OCF T-09 / LCQ / OFF T-43 / LCQ T-21 / OCF / OFF T-10 / LCQ |
| ATGS: T. Dorigan—Waycross J. Land—Waycross | | | AIR/AIR RW: | 122.575 E/sd 123.125 W/sd 122.925 GA IA | | Leadplanes B-2 ASM @ OCF L-4-9 LP/ASM @ LCQ |
| State Aviation Lead Waycross Airport Mike Leverette | | | AIR/GROUND: | | 151.145 GA IA 167.950 Sw. Farm | Base FAX #: |
| ASGS: Ray Dew | | 478-550-2990 | COMMAND: CH 1 | | | |
| Waycross HEBM: Kevin Kozak | | 360-791-2520 | COMMAND RPT | Rx: | Tx: | ATGS Aircraft 90K—Beach Baron—T. Dorigan 0EB—King Air—C. Cross Lake City |
| Waycross HB & Braganza HS: | | | DECK FREQ: | | 163.100 | |
| Braganza Helispot HESM: Wayne Langston Dip Site Mgr: Walter Thompson | | 919-920-4906 803-221-1081 | TOLC FREQ: Rx: 151.145 Tx: 151.145 | | | Other Flight follow with Pogo Helibase or Waycross Helibase IA Air Attack for State--- Cessna 182's and GA NG HEAVIES Bell 407-Chopper 7 Approved Helispots—Refer to Okefenokee NWR Despite Map One GNG Helicopter will remain at Waycross Airport for IA at all times ALL AIRCRAFT Call Air Attack when entering TFR--- Waycross Helibase will call Pogo as a back up!!! ALL FLIGHTS WILL BE CLEARED WITH AOBD 107Z - IR-RW Cobra |
| Pogo Helibase Davis Helibase Waycross Helibase | | 912-496-4415 912-496-3765 912-338-5982 | FLT FOLLOWING: Pogo Helibase Waycross Helibase | | RX 164.625 TX 163.150 TONE 103.5 | |
| Fargo Helibase—(Golf Course) N 30 41 27.3 x W 82 34 02.0 Stephen Foster SP (Pocket) N 30 47 32.2 x W 82 22 39..6 | | | | | | |

9. HELICOPTERS (Use Additional Sheets As Necessary)

HEAVY HELICOPTERS @ DAVIS HELIBASE & POGO HELIBASE

| FAA N# | TY | MAKE/MODEL | BASE | AVAIL | START | REMARKS | FAA N# | TY | MAKE/MODEL | BASE | AVAIL | START | REMARKS |
|----------|----|-------------------|----------|-------|-------|-----------------------------|----------------|-----|------------|-----------|-------|-------|----------------------|
| N5BH | I | Sikorsky S-70A-27 | Pogo | 0900 | 0930 | Bucket Drops | N5738Y | III | Bell 206 | Pogo | 0900 | 0930 | Recon/ Admin/ IA |
| N4503E | I | Sikorsky S-61N | Pogo | 0900 | 0930 | Bucket drops | N12HX | III | Bell 407 | Pogo | 0900 | 0930 | Admin/ Recon |
| N15HX | II | Bell 205++ | Pogo | 0900 | 0930 | Bucket drops | Chopper 7/ 7GF | III | Bell 407 | Waycross | 0900 | 0930 | GA IA / Bucket Drops |
| N17HX II | II | BELL 205++ | Pogo | 0900 | 0930 | Bucket Drops | 90K | I | Baron | Waycross | 0900 | 0930 | ATGS |
| 606 | I | UH-60 (NG) | Waycross | 0900 | 0930 | IA for State & Bucket Drops | 62Z | I | King Air | Lake City | 0800 | 0930 | ATGS |
| 89125 | I | CH47 (NG) | Waycross | 0900 | 0930 | IA for State & Bucket Drops | 1AF (LA) | | Cessna 182 | Waycross | 0900 | 0900 | Aerial Detection |
| 017 | I | UH-60 (NG) | Waycross | 0900 | 0930 | IA for State & Bucket Drops | 2AF (LA) | | Cessna 182 | Waycross | 0900 | 0930 | Aerial Detection |
| 71K (GA) | | Cessna 185 | Waycross | 0900 | 0930 | Aerial Detection GA | 98E (GA) | | Cessna 182 | Waycross | 0900 | 0930 | Aerial Detection |
| 11H (GA) | | Cessna 182 | Waycross | 0900 | 0930 | Aerial Detection GA | | | | | | | |

10. TASK/MISSION/ASSIGNMENT (Type/Function includes: Air Tactical, Retardant, Recon, Personnel Transport, Water Dropping, S&R, etc.)

| TYPE/FUNCTION | NAME OF PERSONNEL OR CARGO (if applicable) OR INSTRUCTIONS FOR TACTICAL AIRCRAFT | MISSION START | FLY FROM | FLY TO |
|----------------------------|--|---------------|------------------------------|-----------------|
| Type II Helicopter | Operation and Logistic Support | 0930 | Helibase | Fire and Return |
| Type III Helicopter | Operation and Logistic Support | 0930 | Helibase | Fire and Return |
| Type I Helicopter | Operation and Logistic Support | 0930 | Helibase | Fire and Return |
| ATGS Platforms | Aerial Supervision of all Aircraft over Incidents | 0930 | Waycross Airport & Lake City | Fire and Return |
| State Detection Fixed Wing | Aerial Detection and IA for New Fire Starts | 0930 | Waycross Airport | Fire and Return |

Georgia Bay Complex – Group 1

| INCIDENT RADIO COMMUNICATIONS PLAN | | 1. Incident Name Georgia Bay Complex | | 2. Date/Time Prepared 5- 28-2007 | 3. Operational Period Date/Time 5- 29-2007 |
|------------------------------------|-----------|--|--|--|--|
| 4. BASIC RADIO CHANNEL UTILIZATION | | | | | |
| Radio Type/Cache | Channel | Function | Frequency/Tone | Assignment | Remarks |
| King NIFC | 1 | Command Ware EMA Repeater | 158.7825/162.2 153.7625/162.2 Narrow Band | Command Rpt | Sweat Farm |
| King NIFC | 2 | Fire Tower Repeater | 159.225 /203.5 151.280/203.5 | Command Rpt | South of Homerville |
| King NIFC | 3 | GA Mutual Aid | 154.280 154.280 | Structural & Tactical | |
| King NIFC | 4 | 911 & Structural Coordinator Rptr. | 154.445/ 118.8 154.010/118.8 | Emergency Traffic | This is a heavy traffic channel, use only for Emergency Traffic |
| King NIFC | 5 | Tactical | 159.285 Rx & Tx | Divs. WI, WJ, WQ, WR | Southern COMPACT |
| King NIFC | 6 | Tactical | 168.050 Rx & Tx Narrow Band | Div. WV, Swing IA Sweat Farm Night | Fireline |
| King NIFC | 7 | Tactical | 168.600 Rx & Tx Narrow Band | Divs. WX, WY | Fireline |
| King NIFC | 8 | Tactical | 164.1375 Rx & Tx Narrow Band | Divs. H, Z, WA, WL, WK,WM, WR,WW | Fireline |
| King NIFC | 9 | Tactical | 168.775 Rx & Tx Narrow Band | Breakout Group Prep Group Bugaboo Night | Fireline |
| King NIFC | 10 | Tactical | 169.900 Rx & Tx Narrow Band | Divs. I, J, K, WH, WS, WT, WU | Fireline |
| King NIFC | 11 | Tactical | 168.200 Rx & Tx Narrow Band | Divs. A, B, C, D, WE, WF, WG Manor Group | Fireline |
| King NIFC | 12 | Air to Ground | 167.950 167.950/110.9 Narrow Band | Federal Air to Ground | |
| King NIFC | 13 | Air To Ground | 159.390 Rx & Tx | Georgia Air to Ground | INITIAL ATTACK |
| King NIFC | 14 | Air Guard | 168.625 168.625/110.9 Narrow Band | Air Emergency Only | Air Emergency Only |
| King NIFC | 15 | TACTICAL RPTR. | 159.240/203.5 151.400/203.5 | Bugaboo and Cox Prarie Tactical Rptr. | Foster Repeater |
| King NIFC | 16 | Air Guard | 168.625 168.625/110.9 Narrow Band | Air Emergency Only | Air Emergency Only |

5. Prepared By (Communications Unit)

LARRY SHARPE/ COML

Georgia Bay Complex – Group 2

| INCIDENT RADIO COMMUNICATIONS PLAN | | 1. Incident Name Georgia Bay Complex | | 2. Date/Time Prepared 5- 28-2007 | 3. Operational Period Date/Time 5- 29-2007 |
|------------------------------------|---------|---|--|--|--|
| 4. BASIC RADIO CHANNEL UTILIZATION | | | | | |
| Radio Type/Cache | Channel | Function | Frequency/Tone | Assignment | Remarks |
| King NIFC | 1 | GFC Fargo Repeater | 159.120/107.2 151.370/123.0 | Command Rpt | Sweat Farm |
| King NIFC | 2 | Fire Tower Repeater | 159.225 /203.5 151.280/203.5 | Command Rpt | South of Homerville |
| King NIFC | 3 | GA Mutual Aid | 154.280 154.280 | Structural & Tactical | |
| King NIFC | 4 | 911 & Structural Coordinator Rptr. | 154.445/ 118.8 154.010/118.8 | Emergency Traffic | This is a heavy traffic channel, use only for Emergency Traffic |
| King NIFC | 5 | Tactical | 159.285 Rx & Tx | Divs. WI, WJ, WQ, WR | Southern COMPACT |
| King NIFC | 6 | Tactical | 168.050 Rx & Tx Narrow Band | Div. WV, Swing IA Sweat Farm Night | Fireline |
| King NIFC | 7 | Tactical | 168.600 Rx & Tx Narrow Band | Divs. WX, WY | Fireline |
| King NIFC | 8 | Tactical | 164.1375 Rx & Tx Narrow Band | Divs. H, Z, WA, WL, WK,WM, WR,WW | Fireline |
| King NIFC | 9 | Tactical | 168.775 Rx & Tx Narrow Band | Breakout Group Prep Group Bugaboo Night | Fireline |
| King NIFC | 10 | Tactical | 169.900 Rx & Tx Narrow Band | Divs. I, J, K, WH, WS, WT, WU | Fireline |
| King NIFC | 11 | Tactical | 168.200 Rx & Tx Narrow Band | Divs. A, B, C, D, WE, WF, WG Manor Group | Fireline |
| King NIFC | 12 | Air to Ground | 167.950 167.950/110.9 Narrow Band | Federal Air to Ground | |
| King NIFC | 13 | Air To Ground | 159.390 Rx & Tx | Georgia Air to Ground | INITIAL ATTACK |
| King NIFC | 14 | Air Guard | 168.625 168.625/110.9 Narrow Band | Air Emergency Only | Air Emergency Only |
| King NIFC | 15 | TACTICAL RPTR. | 159.240/203.5 151.400/203.5 | Bugaboo and Cox Prarie Tactical Rptr. | Foster Repeater |
| King NIFC | 16 | Air Guard | 168.625 168.625/110.9 Narrow Band | Air Emergency Only | Air Emergency Only |

5. Prepared By (Communications Unit)
LARRY SHARPE/ COML

Georgia Bay Complex – Kneeknocker/Roundabout (Group 3)

| INCIDENT RADIO COMMUNICATIONS PLAN | | 1. Incident Name Georgia Bay Complex | | 2. Date/Time Prepared 5- 28 -2007 | 3. Operational Period Date/Time 5- 29-007 |
|---|-----------|--|--|---|---|
| 4. BASIC RADIO CHANNEL UTILIZATION | | | | | |
| Radio Type/Cache | Channel | Function | Frequency/Tone | Assignment | Remarks |
| King NIFC | 1 | Mobile to Mobile | 159.390 RX & Tx | Breakout | Kneeknocker & Roundabout |
| King NIFC | 2 | Mobile to Base | 159.390 Rx 159.225 Tx | Breakout | Kneeknocker & Roundabout |
| King NIFC | 3 | GA Mutual Aid | 154.280 154.280 | Race Track Fire | Structural & Tactical |
| King NIFC | 4 | Tactical | 159.285 Rx & Tx | As needed | Southeastern Compact |
| King NIFC | 5 | Tactical | 164.1375 Rx & Tx | | |
| King NIFC | 6 | Tactical | 168.775 Rx & Tx | Roundabout AD | |
| King NIFC | 7 | Tactical | 169.900 Rx & Tx | Roundabout BC | |
| King NIFC | 8 | Tactical | 168.200 Rx & Tx | Kneeknocker | |
| King NIFC | 9 | Tactical | 159.270 Rx & Tx | Ft. Mudge Fire | Red Channel |
| King NIFC | 10 | Tactical | 159.420 Rx & Tx | Forest Drive Fire | White Channel |
| King NIFC | 11 | Tactical | 159.330 Rx & Tx | | Blue Channel |
| King NIFC | 12 | Air to Ground | 169.200 Rx & Tx | Kneeknocker | Air to Ground Dedicated to this complex |
| King NIFC | 13 | Air Guard | 168.625 168.625/110.9 Narrow Band | Air Emergency Only | Air Emergency Only |
| King NIFC | 14 | Knee Repeater | 159.465 Rx 151.145 Tx /114.8 | Command Repeater | Kneeknocker only |
| 5. Prepared By (Communications Unit) LARRY SHARPE/ COML | | | | | |

| | | | | | |
|--|---|------------------------------------|--|---|-----------------------|
| MEDICAL PLAN | 1. Incident Name Georgia Bay Complex | 2. Date Prepared 5/28/07 | 3. Time Prepared 1200 | 4. Operational Period 5/29/07 DAY & NIGHT SHIFT | |
| 5. Incident Medical Aid Station | | | | | |
| Medical Aid Stations | Location | | | Paramedics Yes No | |
| Medical Unit Georgia Bay 912-218-9101 | Georgia Forestry Headquarters ICP - Carswell (MEDL) | | | EMT | |
| Medical Unit Fargo | Fargo Welcome Center – Anderson (MEDL) | | | Yes EMT | |
| 6. Transportation | | | | | |
| A. Ambulance Services | | | | | |
| Name | Address | Phone | Paramedics Yes No | | |
| Ware County EMS | Waycross Georgia (911 to activate) | 912-281-9467 Linc 1*96*116 | Yes | | |
| Charlton Memorial EMS | 1203 N Third St Folkston Ga (911 to activate) | 888-255-4961 Linc 1*25*3468 | Yes | | |
| Fargo EMS Staging Unit | Fargo (911 to activate) | Ask for Fargo Staging EMS | Yes | | |
| Air Ambulance Service | | | | | |
| Trauma 1 | Jacksonville, FL (26 min/air) | 1-800-223-4878 | Yes | | |
| AirMed | Augusta, GA (2 hrs/air) | 1-888-792-9245 | Yes | | |
| Lifeflight (155.340) | Jacksonville, FL (35 min/air) | 1-877-870-7779 | Yes | | |
| B. Incident Ambulances | | | | | |
| Name | Location | | | Paramedics Yes No | |
| Ware County EMS | Waycross (Drop Point 305) | | | Yes | |
| Ware County EMS | Fargo (Fargo Unit – 41 First Street – Fargo, GA 31631) | | | Yes | |
| 7. Hospitals | | | | | |
| Name | Address | Travel Time Air Ground | Phone | Helipad Yes No | Burn Center Yes No |
| Charlton Memorial | 1203 N 3 rd St Folkston N 30°50.8 W 82°00.1 | 10 min 20 min. | 912-496-2531 | Yes | No |
| Satilla Regional | 410 Darling Ave Waycross Ga N 31°13.56 W 82°21.058 | 15 min 30 min | 912-283-3030 | Yes | No |
| Shands Hospital (level I) | Jacksonville, FL N 30°20 97 W 82° 13 992 | 45 min 1.5 hrs | 800-223-4878 | Yes | Yes |
| South Georgia Medical Center | 2501 N. Patterson St. Valdosta, GA 31602 | 60 min | 229-333-1000 | | |
| Memorial Hospital | Savannah, GA 4700 Waters 3200.7 8107.6 | 40 min | 912-350-8999 | Yes | No |
| Shands Burn Center | Gainesville, FL 38.33 N 082 20.73W | 45 min | 352-265-0300 | Yes | Yes |
| Doctor's Hospital Joseph Still Burn Center | August,GA (Chief Burn Ctr 3328.943 8205.422 | 90 min 3 ½ hrs | 877-863-9595 706-863-9595 | Yes | Yes |
| 8. Medical Emergency Procedures | | | | | |
| Identify any EMTs and Paramedics in your crews. All medical emergencies will be reported to the Division Supervisor who will assume command and notify Line Medics. 1. Provide medical care & stabilize patient. 2. Call 911 3. Notify Communications via radio over Command Channel. 4. Communications will clear radio traffic for medical emergency. 5. Notify the Field Ops Section Chief. 6. Com will notify ambulance and coordinate with IC, SOF, MEDL Helispots – Braganza Sweat Farm ICP: 31 07.23 X 82 15.23 Helispots – Fargo Base Camp: H-114 (4 mi marker Hwy 177 – Stephen C. Foster St. Prk) 30 47 30.02 X 82 22 39.5 H-113 (Hwy 441 - golf course) 30 41.739 X 82 33.961 | | | INJURY REPORTING PROCESS: Nature of Injury: _____ Location of Patient: _____ Transportation Requested by: Air___ Ground___ Pick Up Point: _____ Lat _____ Long _____ Patient Unit ID: _____ Is an EMT w/Patient: Yes___ No___ Age: _____ Sex: Male___ Female___ MAJOR EMERGENCIES – Secure the area and identify witness for later investigation. Keep an accurate log of events. NOTE: Do not give Patients Name over the radio. | | |
| Prepared by (Medical Unit Leader) (GA) Robert Carswell (T) (912) 218-9101 Linc 1*18*7480 | | | 10. Reviewed by (Safety Officer) (NC) Mike Huffman (919) 218-9060 | | |

HUMAN RESOURCES

Problem Solving Techniques

Regardless of the issue, proper actions can result in effective resolution.

Ask yourself before you report an issue...

“What appears to be the issue?”

“What seems to be causing the issue?”

Then ask...

“What is a realistic option needed to resolve this issue?”



Approximately **95%** of all issues and concerns are minor on an incident and can be resolved easily.

Resolving *minor* issues and problems in a *timely manner* at the lowest level will prevent *major interruptions* to our work on this incident.

"Your attitude, not your aptitude, will determine your altitude"
~Zig Ziglar

**If you have questions or concerns –
contact the Human Resource Specialist**

**Monica Schwalbach, HRSP
(828) 230-8914**

**Andrew Quillen, HRSP (T)
(404) 202-1547**

Sweat Farm Road Phone Roster 5-29-07

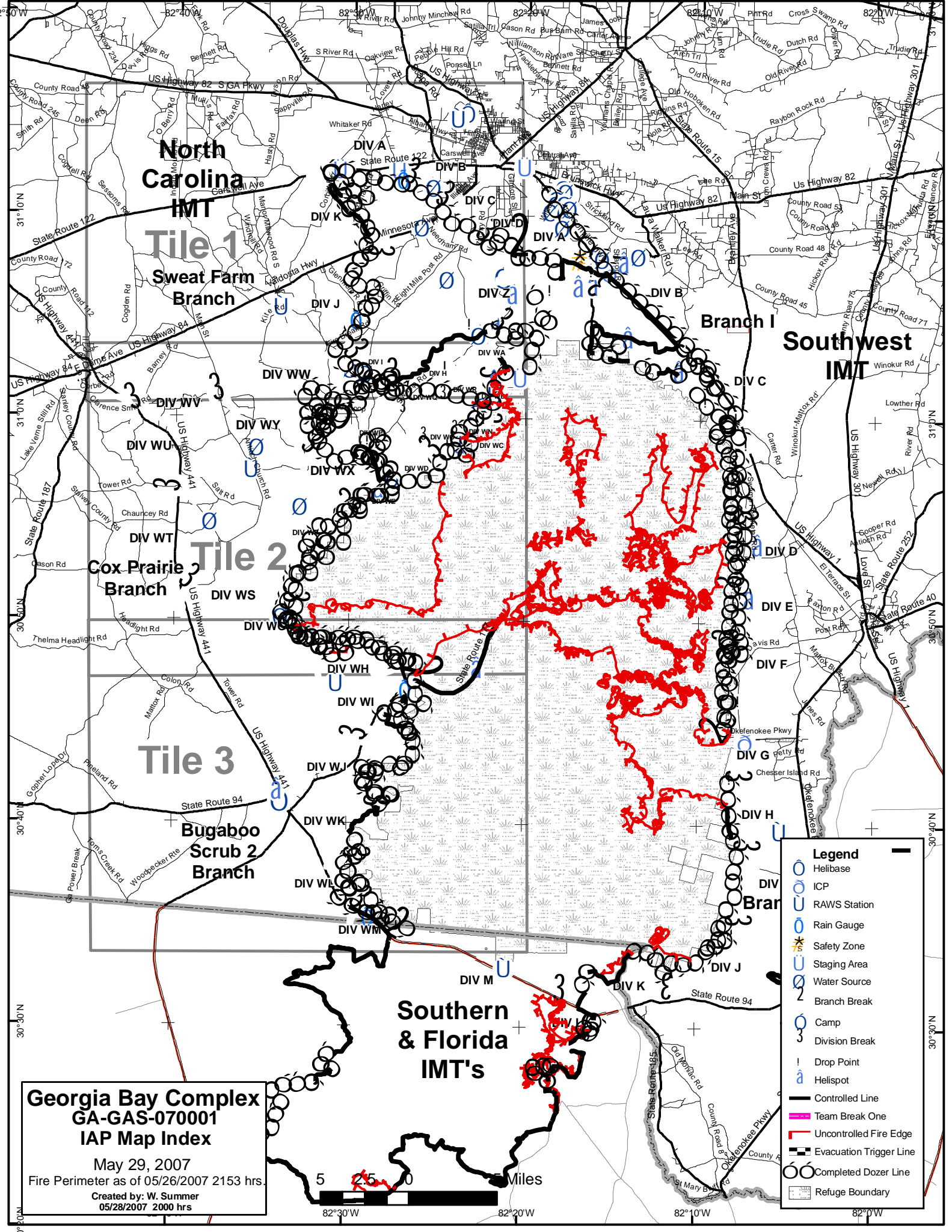
| NAME | POSITION | PHONE NUMBERS | LINC ID |
|------------------------------------|--------------------|------------------------|-------------------------|
| COMMAND & GENERAL STAFF | | 912-285-6046 | Fax 912-285-6014 |
| Reid Hildreth | IC | 912-218-5108 | 18*11878 |
| Dan Brandon | DPIC | 704-616-2252 | |
| Monica Schwalbach | HRSP | 828-413-2508 | |
| Gary Thompson | LOFR | 919-548-5836 | |
| Joel Hambright | LOFR (Fargo) | 912-218-9316 | |
| Bruce MacDonald | PIO | 912-218-9319 | 18*11959 |
| Diane Steltz | PIO | 919-548-5831 | |
| Bernie Pineda | PIO | 478-550-2989 | |
| Michelle Weston | PIO | 912-281-8267 | |
| David Elkowitz | PIO | 912-218-8182 | 18*6988 |
| Tom Berglund | PIO | 478-550-2981 | |
| Edith Asrow | PIO | na | |
| John Warner | PRTL | 936-546-3164 | |
| Donna Wilson | PRTM | 540-797-6241 | |
| Sandra Taylor | PRTM | 936-546-3554 | |
| Mike Huffman | SOF 2 | 919-218-9060 | |
| Mark Luellen | SOF2(T) | 919-356-9487 | |
| Keith Kenkins | SOF(Bugaboo Br) | 478-550-2991 | |
| Ron Hamm | SOF(Sweat Farm Br) | 979-268-3782 | |
| | SOF | 912-218-7132 | 18*11932 |
| | SOF | | |
| Harry Kepler | SOF | 912-218-8325 | 18*7145 |
| John Orton | SOF | 912-218-4958 | 18*4899 |
| Larry Miller | SOF | 912-218-9355 | 18*12622 |
| Pete Stewart | SOF | 912-218-8965 | 18*7610 |
| Tim Sampson | SOF | 912-218-9215 | 18*11832 |
| Steve Snider | SOF | 912-218-9308 | 18*10090 |
| Agency Reps | | | |
| Billy Leitch | LOFR | 912-218-9325 | 18*12022 |
| Shawn Alexander | LOFR | 912-218-9232 | 18*7378 |
| Skippy Reeves | LOFR | 912-218-9359 | 18*12756 |
| OPERATIONS | | 912-285-6039 | |
| John Nicols | OSC | 912-218-9323 | 18*11981 |
| Lee Burwell | OSC | 979-218-9909 | 18*11907 |
| Jeff Burns | OSC | 912-218-5414 | 18*11904 |
| Amery Wells | OPBD | 912-218-8343 | 18*4212 |
| Brantley McManus | OPBD | 912-218-9313 | 18*9313 |
| Doug Mattox | DIVS | 912-218-9324 | 18*11985 |
| Mike Appling | DIVS | 912-218-9343 | 18*12314 |
| Heath Morton | DIVS | 912-218-7135 | 18*11946 |
| Jay Collett | DIVS | 912-218-9320 | 18*11960 |
| Jim Davis | DIVS | 912-218-9307 | 18*10062 |
| Pete Villa | DIVS | 912-218-8226 | 18*4523 |
| David LaChapelle | DIVS | 912-218-7103 | 18*6748 |
| Ron Swan | DIVS | 912-218-9141 | 18*11862 |
| Richard Gonzalas | DIVS | 912-218-9352 | 18*12520 |
| Lucus Santio | DIVS | 435-790-7094 | |
| Ricky Adkins | DIVS | 912-218-9307 | 18*10062 |
| Phillip Wall | DIVS | 252-229-7135 | |
| Brian Richards | LE/Arson | 912-287-4499 | 18*13485 |
| BIG TURNAROUND OPS SEC | | 912-496-4173 | |
| CSX RAIL ROAD OPERATIONS- Dixon | | 912-270-0699 | |
| AIR OPERATIONS | | 912-285-6039 | |
| Bob Seigler | AOPD | 828-231-4560 | |
| Ray Dew | ASGS | 478-550-2990 | |
| Wayne Langston | HEB2 | 919-920-4906 | |
| Kevin Kozak | HEB1(T) | 360-791-2520 | 18*6167 |
| FINANCE | | 912-285-6038 | |
| Marlene Sherrod | FSC | 912-285-6038 Landline | 252-904-6977 cell |
| Jennifer Johnson | FSC (t) | 919-698-2457 | |
| Paul Palmiotto | IBA | 478-681-6111 | |
| Barbara Hatch | Buying Team | 912-285-6112 Hard Line | 505-660-0399 Cell |
| Miguel Martinez | Comp/Claims | 912-285-6038 | |
| Christine Overman | COST | 252-312-5238 | |
| Ron Myers | COST | 919-218-2568 | |
| Mavis Gragg | TIME | 828-757-6647 | |
| Richard Chellberg | Procurement (t) | 336-239-1442 | |

| | | | |
|---------------------|------|--------------|--|
| Mary Jane Derendoff | EQTR | 912-285-6038 | |
| Bob Drown | EQTR | 912-285-6038 | |
| Eunice Vankuren | PTRC | 912-285-6038 | |

Sweat Farm Road Phone Roster 5-29-07

| NAME | POSITION | PHONE NUMBERS | LINC ID |
|--|-------------------|---------------------|-------------------------|
| PLANNING | | | |
| | | 912-285-6046 | |
| John Howard | PSC | 912-218-7586 | 18*6871 |
| Don Watson | DPSC | 910-334-0033 | |
| Bill Pickens | RESL | 919-218-2802 | |
| Michael Cheek | RESL | 704-616-0747 | |
| Chris Brenzel | SITL | 760-822-2257 | |
| Greg Smith | SITL | 828-506-0672 | |
| Annie Lott | DOCL | 919-333-8410 | |
| Leslie Chadwell | CTSP | 919-218-6451 | |
| Gary Curcio | FBAN | 919-810-5623 | |
| Theresa Hurdle | FOBS | 912-218-9316 | 18*11828 |
| Gary White | FOBS | 912-218-9358 | 18*12670 |
| Tim Howell | FOBS (t) | 828-508-2386 | |
| Bill Leatherwood | GISS | 828-450-2665 | |
| Will Sumner | GISS (t) | 919-218-6285 | |
| John Pendergrast | IMET | 912-218-9309 | 18*10247 |
| Chris Liv | SCKN(t) | 252-567-0830 | |
| Mary Lou Dozier | DMOB | 912-218-9361 | 18*12771 |
| LOGISTICS | | | |
| | | 912-285-6091 | Fax 912-285-6111 |
| ORDERING | | | |
| | | 912-285-6068 | |
| Troy Cleland | LSC | 252-229-1997 | |
| Travis Ruff | LSC (t) | 828-413-4440 | |
| Fred LaChance | LSC @ FARGO | 541-398-1620 | |
| Larry Sharpe | COML | 919-218-0992 | |
| Wayne Williams | MEDL (t) | 919-801-4264 | |
| Robert Carswell | MEDL (t) | 912-218-9101 | 18*7480 |
| Lenny Throckmorton | EMT | 804-467-9576 | |
| Thomas Nails | EMT | | |
| Roger Atkinson | SECM | 479-970-3038 | |
| Tony Bolton | SEC1 | 601-405-9027 | |
| Wayne Garman (Camp for the Blind) | BCMG | 478-550-3000 | |
| Fredrick Dunets (Camp for the Blind-Night) | BCMG | 912-218-9354 | |
| Danté Whittaker, Sr. (ICP) | BCMG (T) | 478-550-2985 | |
| Chuck Barber | Camp Crew Manager | 912-218-9342 | 18*12299 |
| Danny Hayes | EQPM | 828-292-4007 | |
| Michelle Sanchez | EQPM | 912-281-8279 | |
| Keith Skinner | EQPM | 936-546-8133 | |
| Clyde Leggins | FACL | 828-443-2294 | |
| Chris Hubacker | FDUL | 912-218-9321 | 18*11964 |
| William Lee | Fuel Truck | 912-218-9017 | 18*6682 |
| Greg Cox | GSUL | 910-334-0027 | |
| Mike Summers | GSUL | 936-546-1957 | |
| Travis Shidal | ORDM | 704-473-0430 | |
| Jaime Logan | RCDM | 828-361-3606 | |
| Todd Nightengale | STAM (FARGO) | 936-546-3163 | |
| Keith Walters | SUPL | 336-214-2426 | |
| Steve Moore | FARGO | 912-218-9344 | 18*12374 |
| Bobby Weaver | THSP | 936-546-8010 | |
| John Rush | THSP | 936-546-1883 | |
| Larry Brown | GDC | 912-218-9366 | 11*32283 |
| Don Shugart | GDC | 912-218-9371 | 11*32063 |
| Sylvester Hall | GDC | 912-218-9367 | 11*32054 |
| Tommy Maddox | GDC | 912-218-9374 | 11*32069 |
| MISC. | | | |
| COMMAND DISPATCH | | 912-218-9044 | 18*6870 |
| PUBLIC INFORMATION | | 912-218-9319 | 18*11959 |
| WAYCROSS DISTRICT OFFICE | | 912-287-4915 | |
| MACON DISPATCH | | 912-218-9232 | 18*7378 |
| MOP UP COMMAND | | | 18*4918 |
| FARGO BASE | | 912-218-8907 | 18*7532 |

| OTHER INCIDENT MANAGEMENT TEAMS | | | |
|--|----------------------|----------------|-----------------|
| SOUTHWEST AREA IMT: BIG TURNAROUND Phone Roster | | | |
| NAME | PHONE NUMBERS | | |
| <i>COMMAND STAFF</i> | 912-496-4177 | | |
| <i>PLANNING</i> | 912-496-4173 | | |
| <i>OPERATIONS</i> | 912-496-4132 | | |
| <i>AIR OPERATIONS</i> | 912-496-4415 | | |
| <i>FINANCE</i> | 912-496-4102 | | |
| <i>LOGISTICS</i> | 912-816-5749 | | |
| <i>EXPANDED DISPATCH</i> | 912-496-3162 | | |
| <i>COMMUNICATIONS</i> | 912-496-2111 | | |
| | | | |
| FLORIDA STATE RED TEAM and ATLANTA NIMO TEAM Roster 5-24-07 | | | |
| NAME | PHONE NUMBERS | | |
| <i>INFORMATION</i> | 386-719-2739 | | |
| <i>OPERATIONS</i> | 386-719-2743 | | |
| <i>COMMUNICATIONS</i> | 386-719-2748 | | |
| <i>FLORIDA INTERAGENCY COORDINATION</i> | 850-580-6885 | | |
| OPERATIONS Kneeknocker | | | |
| Barry Chesser (Kneeknocker) | Technical Specialist | 912-218-6552 | Line 1*18*4166 |
| Ed Keith | DIVS | 770-550-1868 | Line 1*18*1628 |
| Earl Roberson | Technical Specialist | 912-218-8344 | Line 1*18*4279 |
| John Godwin | DIVS | | Line 1*18*3213 |
| OPERATIONS Roundabout 912-422-3140 | | | |
| Paul Gillis | Technical Specialist | | Line 1*18*20684 |
| Steve Miller | OPBD | | Line 1*18*11625 |
| Jamie Smith | DIVS | | Line 1*18*4755 |
| Brent McCarty | DIVS | | Line 1*18*12585 |
| Lucky Jones | DIVS | | Line 1*18*5198 |
| | | | |
| OTHER AGENCIES | | | |
| Brantley County Fire Coordinator | Ken Lee | 912-218-2012 | 1*44*1081 |
| | | 912-717-3330 | |
| Nahunta FD Fire Chief | Button Lee | 904-699-1619 | 1*25*323 |
| | | 912-282-8730 | |
| EMA / 911 Director | Billy Lartz | 912-217-1638 | 1*11*2001 |
| Georgia State Patrol | Dispatcher | 912-287-6500 | |
| Brantley County Sheriff | Robert Thomas | 912-614-1658 | 1*25*1130 |
| Clinch County Sheriff | | 912-487-5316 | |
| WareCounty Sheriff | | 912-287-4325 | |
| Charleton County Sheriff | | 912-496-7321 | |
| | | | |
| DNR, ENGB | T. Trowbridge | © 912-223-2815 | |
| DNR ENOP | Sam Williams | 229-212-0124 | |
| Atkinson EMA IC | David Moore | | |
| Atkinson GEMA Coordinator | Diane May | | |
| | | | |
| North End Resource Advisor | Dean Easton | 912-496-7366 | ext 235 |
| South End Resource Advisor | Doug Nuss | 912-286-3110 | |
| | | | |
| Joint Information Center | Waycross | 1-866-380-9966 | |



North Carolina IMT
Tile 1
Sweat Farm Branch

Tile 2
Cox Prairie Branch

Tile 3
Bugaboo Scrub 2 Branch

Branch I
Southwest IMT

Southern & Florida IMT's

Georgia Bay Complex
GA-GAS-070001
IAP Map Index
 May 29, 2007
 Fire Perimeter as of 05/26/2007 21:53 hrs.
 Created by: W. Summer
 05/28/2007 20:00 hrs

| Legend | |
|--------|-------------------------|
| | Helibase |
| | ICP |
| | RAWs Station |
| | Rain Gauge |
| | Safety Zone |
| | Staging Area |
| | Water Source |
| | Branch Break |
| | Camp |
| | Division Break |
| | Drop Point |
| | Helispot |
| | Controlled Line |
| | Team Break One |
| | Uncontrolled Fire Edge |
| | Evacuation Trigger Line |
| | Completed Dozer Line |
| | Refuge Boundary |

5 Miles

Georgia Bay Complex
GA-GAS 070001
05/29/2007
IAP Map - Tile 1

Perimeter as of 05/26/2007 2153 hrs

- Legend**
- 2 Branch Break
 - 3 Division Break
 - Helibase
 - | Drop Point
 - Water Source
 - U Staging Area
 - ICP
 - Helispot
 - ★ Safety Zone
 - U RAWs Station
 - Rain Gauge
 - Camp
 - Uncontrolled Fire Edge
 - Completed Dozer Line
 - Controlled Line

Sweat Farm Branch

DIV A

DIV B

DIV C

DIV D

DIV K

DIV J

DIV Z

DIV I

DIV WW

DIV H

DIV WA

DIV WQ

DIV WR

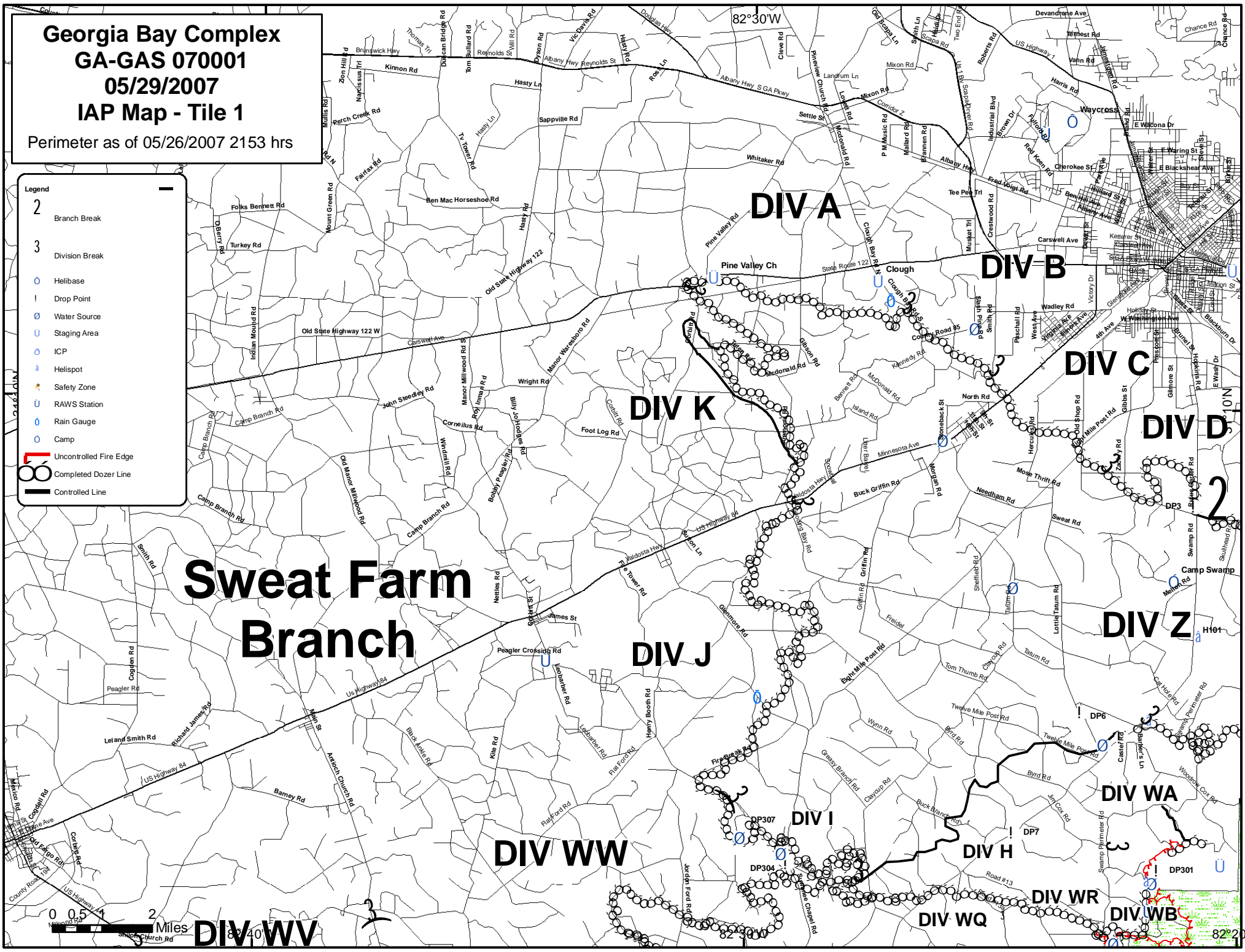
DIV WB

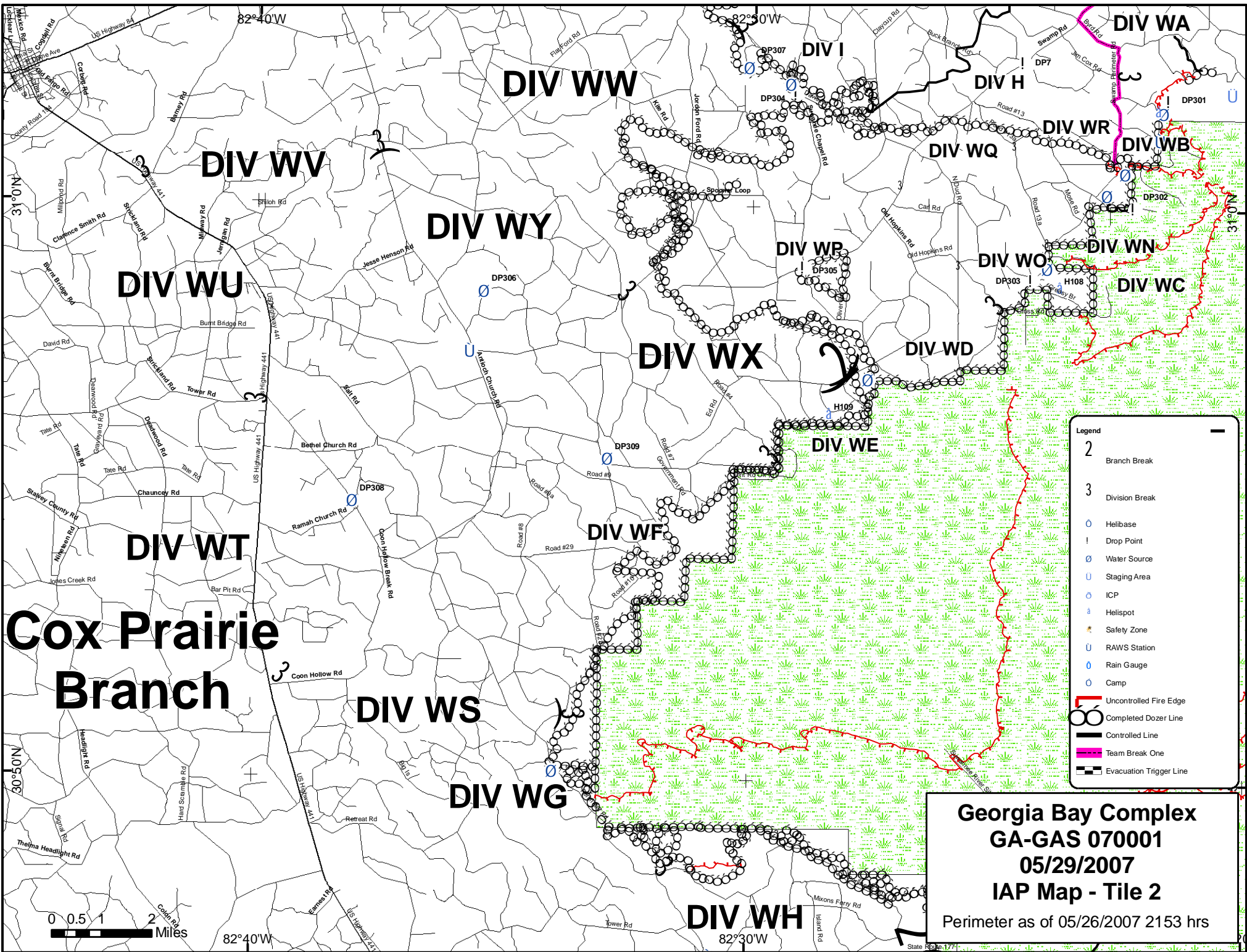
DIV WV



82°30'W

82°20'W





Cox Prairie Branch

Georgia Bay Complex
GA-GAS 070001
05/29/2007
IAP Map - Tile 2
 Perimeter as of 05/26/2007 2153 hrs

- Legend**
- 2 Branch Break
 - 3 Division Break
 - Helibase
 - ! Drop Point
 - Water Source
 - U Staging Area
 - ICP
 - ⚡ Helispot
 - ★ Safety Zone
 - U RAWS Station
 - Rain Gauge
 - Camp
 - Uncontrolled Fire Edge
 - Completed Dozer Line
 - Controlled Line
 - Team Break One
 - Evacuation Trigger Line

