



# Georgia Bay Complex

## Sweat Farm Rd. Fire

## Bugaboo Scrub II Fire

### *Incident Action Plan*

*Friday*

**May 18, 2007**

**GA-GAS-0097028**



**GEMA**



ORGANIZATION ASSIGNMENT LIST		9.	Operations Section		
1. Incident Name		Chief	Rich Gray / Bill Woodyard		
Georgia Bay Complex		Planning Ops	David Abernathy		
2. Date	3. Time	a.	<b>Sweat Farm Road Branch - Divisions/Groups</b>		
May 17, 2007	2000	Branch Director			
4. Operational Period		Division/ICT3	A,B,C,D		
<b>May 18, 2007 0700-2000</b>		Division/ICT3	H	Heath Morton	
5.	<b>Incident Commander and Staff</b>		Division/ICT3	I,J,K	
Incident Commander	Paul Hannemann	Group	ICP Group		
Liason	Shane Crimm	Group	Manor	Jay Collett	
Liason	Bob Houseman	Group	Day Shift/Stctr	Nate Leising	
Safety Officer	Brian Beisel	Group	Swing Shift/Stctr	Bob Habeck	
Information Officer	Bielenberg/ Amen/ Thompson/ Stone/ Polant/ Eck/ Withnall	Group	LE/Arson	Mike Heath	
6.	<b>Agency Representatives</b>		Group	Prevention	
Agency	Name				
GFC District 8	Frank Sorrells				
GFC District 10	Willard Fell				
GFC Protection Dept.	Alan Dozier				
Charlton Co. Liason	Billy Lietch				
GEMA	Allen Robinson	b.	<b>Bugaboo Scrub II Branch - Divisions/Groups</b>		
7.	<b>Planning Section</b>		Branch Director	Buck Kline	
Chief	Les Rogers	Group	Fargo Group 1	Shane Crimm / David Zeigler	
Deputy	Shane Brown	Group	Fargo Group 2	Rusty Smith / Shane Crimm	
Resources Unit	Richard Gibbs / Dennis Register / Wes Moorehead (T) / Karen Brent (T)	Group	Fargo Group 3	Jim Davis / Shane Crimm	
Situation Unit	D. Ochocki R. Lykins(T) B. Pope(T)				
Documentation Unit					
Demobilization Unit	Carl Lundgren				
Computer Tech	Rusty Brown / Trey Spivey	c.	<b>Branch III - Divisions/Groups</b>		
Fire Behavior Analyst	John Robertson	Branch Director			
Incident Meteorologist	John Quagliariello	Division/Group			
Status/Check In	J. Keiningham(T) / S. Whitley(T) / R. Dottellis(T)	Division/Group			
Field Observer	Williams / White	Division/Group			
GIS	J. Pugh / A. Gareau / B. Robinson	Division/Group			
Infrared Interpreter	L. Barnum / D. Hicks				
Training Specialist	Lewis Kearney				
8.	<b>Logistics Section</b>		d.	<b>Air Operations Branch</b>	
Chief	Susan Cornett	Air Operations Branch Director	P.J. Pearson		
Facilities Unit	Jimmy Caldwell	Helibase Manager	D. Langley / L. Patterson(T)		
Supply Unit	Larry Bennett	Air Support Supervisor			
Food Unit	Terry Seward	GFC Air Operations	Mike Leverette		
Base Camp Manager	Karraker/Garman/Pierce(T)	Air Tanker Coordinator			
Ground Support Unit	G. Gillespie / M. Summers	10.	<b>Finance Section</b>		
Ordering Manager	R. Siemens / K Rhoden	Chief	Jill Lipsey / V. Coleman (T)		
Security Manager	Roger Atkinson	Incident Business Advisor	Lila Johnson		
Medical Unit	Susan Long	Time Unit Leader	Stephanie Elledge		
Communications Unit	Carl Bridges	Buying Team	Barbara Hatch		
Initial Attack Dispatcher	Susie Burford	Personnel Time Recorder	Karen Stripling		
Hotel Manager	John Wall	Equipment Time Recorder	Bob Drowning / Amy Treadwell (T)		
Equipment Manager	M. Sanchez	Procurement	Penny Brown		
Mechanic	English/Skinner/Crane/McNeal	Cost Unit	Carolynne Riggs		
Technical Specialist	Bobby Weaver / John Rush	Comp/Claims	Miguel Martinez/Cathy Oliveras		
Receiving & Distribution Manager	Daniel Wilson	Prepared by (Resource Unit Leader)			
Camp Crew	TN JC #3/Barber	Richard Gibbs / Dennis Register / Wes Moorehead (T) / Karen Brent (T)			

<b>DIVISION ASSIGNMENT LIST</b>				1. Branch <b>Sweat Farm Fire</b>		2. Division/Group <b>A-B-C-D</b>	
3. Incident Name <b>Georgia Bay Complex</b>				4. Operational Period Date: <b>5-18-07</b> Time: <b>0700 - 2000</b>			
5. Operations Personnel							
Operations Chief		<b>David Abernathy O-738 5-19</b> <b>Rich Gray O-77 5-15</b> <b>Bill Woodyard O-136 5-21</b>		Division/ICT3		<b>Jeff Davis O-100 5/17</b>	
Branch Director				Safety Officer		<b>Phil Spor O-59 5/20</b>	
6. Resources Assigned this Period							
Strike Team/Task Force/ Resource Designator		Leader / Name		Last Shift Date	Number Persons	Trans. Needed	Pick Up PT./Time
<b>ST#1 TNS ST Eng T6 O-1026</b>		<b>Scott Smith</b>		5/31	9	N	2000
TN Eng S5UW93 E-1359		Long/Cantrell		5/31			2000
TN Eng 5649 E-1372		Harmond/Steele		5/31			2000
TN Eng S5YD39 E-1360		Wooden/Brown		5/31			2000
TN Eng E-232		Hobbs/Kirby		5/31			2000
Columbia Martinez WT E-1227		Thomas/Hatcherson		5/31	2	N	2000
<b>ST#2 GFC ST Tractor Plow T3 O-913</b>		<b>Mosley</b>		5/24	4	N	2000
GFC JD 650 E-2603		Taylor		5/24			2000
GFC JD 650 E-2604		Harden		5/24			2000
GFC JD 650 E-2605		Calhoun		5/24			2000
GFC Coffee E-1502		Watts		5/20	1	N	2000
7. Control Operations Patrol, mop up and mitigate as well respond to any threats posed by the fire.							
8. Special Instructions Watch out for Snags Remain in communications. Be alert for traffic on Highways Stay Hydrated. Ensure all personnel wear PPE. Take spot WX forecasts hourly. Keep tractors loaded and ready to move if not being used on the line <b>Have constant communication with logging operation in fire area: Buck Rodenberry: 912-2764990 Linc 18*5865</b> <b>LCES implemented by 1000 and notify OPS when completed.</b>							
9. Division/Group Communication Summary							
Function	Frequency	System	Channel	Function	Frequency	System	Channel
Command		King NIFC		Logistics		King NIFC	
Tactical Div/Group	DIV A,B,C,D	King NIFC	Talk Group 1 Ch. 11	Air to Ground	Talk Group 1	King NIFC	Ch. 13
Prepared by (Resource Unit Leader) Richard Gibbs / Dennis Register / Wes Moorehead(t)		Approved by (Planning Section Chief) <i>/s/Les Rogers</i>		Date May 17, 2007		Time 1900	

<b>DIVISION ASSIGNMENT LIST</b>		1. Branch <b>Sweat Farm Fire</b>		2. Division/Group <b>H</b>				
3. Incident Name <b>Georgia Bay Complex</b>		4. Operational Period Date: <b>5-18-07</b> Time: <b>0700 - 2000</b>						
5. Operations Personnel								
Operations Chief		<b>David Abernathy O-738 5-19</b> <b>Rich Gray O-77 5-15</b> <b>Bill Woodyard O-136 5-21</b>		Division/ICT3		<b>Heath Morton O-941 5/23</b>		
Branch Director				Safety Officer		<b>Steve Snider O-186 5/27</b>		
6. Resources Assigned this Period								
Strike Team/Task Force/ Resource Designator		Leader / Name		Last Shift Date	Number Persons	Trans. Needed	Drop Off PT./Time	Pick Up PT./Time
<b>ST# 3GFC ST Engines T6+PU E-2659</b>		<b>Mike Purcell</b>		5/26	11	N	0700	2000
Pickens 86 E-1117		Davis/Keene		5/26		N	0700	2000
Paulding 86 E-1098		Cornett/Henderson		5/26		N	0700	2000
Heard 86 E-1015		Price/Singleton		5/26		N	0700	2000
Upson 86 E-1132		Sanders/Shifflett		5/26		N	0700	2000
<b>Lowndes Co. WT E-2678</b>		<b>Hughes/Lindburg</b>		5/26	2	N	0700	2000
<b>TF# 1 SC TF w/ T6 ENG O-1049</b>		<b>Bruce Ballentine</b>		5/31	7	N	0700	2000
JD 700 SB E-9006		Boyce/Ponter		5/31		N	0700	2000
SCS ENG T6 E-9005		Connally/Heitcamp		5/31		N	0700	2000
SCS ENG T6 E-9007		Craig/ Folk		5/31		N	0700	2000
<b>ST# 4 GFC ST Tractor Plow T3 O-855</b>		<b>George Glenn</b>		5/22	4	N	0700	2000
GAS Jefferson 73 T3 E-1000		Mercier		5/22		N	0700	2000
GAS Burke 70 T4 E-1001		Pearson		5/22		N	0700	2000
GFC Burke 72 T4 E-1002		Cheely		5/22		N	0700	2000
7. Control Operations Patrol, mop up and mitigate as well as respond to any threats posed by the fire.								
8. Special Instructions Remain in communications. Be alert for traffic on Highways Stay Hydrated. Ensure all personnel wear PPE. Take spot RX forecasts every hour. <b>LCES implemented by 1000 and notify OPS when completed.</b>								
9. Division/Group Communication Summary								
Function		System	Channel	Function	Frequency	System	Channel	
Command		King NIFC		Logistics		King NIFC		
Tactical Div/Group	DIV - H	King NIFC	Talk Group 1 Ch.9	Air to Ground	Talk Group 1	King NIFC	Ch. 13	
Prepared by (Resource Unit Leader) Richard Gibbs / Dennis Register / Wes Moorehead(t)		Approved by (Planning Sect. Ch.) /s/Les Rogers			Date May 17, 2007		Time 1900	

<b>DIVISION ASSIGNMENT LIST</b>				1. Branch <b>Sweat Farm Fire</b>		2. Division/Group <b>I-J-K</b>		
3. Incident Name <b>Georgia Bay Complex</b>				4. Operational Period Date: <b>5-18-07</b> Time: <b>0700 - 2000</b>				
5. Operations Personnel								
Operations Chief		<b>David Abernathy O-738 5-19</b> <b>Rich Gray O-77 5-15</b> <b>Bill Woodyard O-136 5-21</b>		Division/ICT3		<b>Mike Benefield O-98 5/18</b>		
Branch Director				Safety Officer		<b>Rodney Bell O-935 5/29</b>		
6. Resources Assigned this Period								
Strike Team/Task Force/ Resource Designator		Leader / Name		Last Shift Date	Number Persons	Trans. Needed	Drop Off PT./Time	Pick Up PT./Time
<b>ST# 7 LAS ST Engines T6 O-656</b>		<b>Robert Smith</b>		5/18	9	N	0700	2000
LAS Engine E-1070		Watson/Eddlman		5/18		N	0700	2000
LAS Engine E-1071		Blackman/Redmond		5/18		N	0700	2000
LAS Engine E-1072		Tilley/Knowles		5/18		N	0700	2000
<b>ST# 8 LAS ST Engines T6 O-655</b>		<b>Brett Lane</b>		5/18	7	N	0700	2000
LAS Engine E-1075		Harris/Poole		5/18		N	0700	2000
LAS Engine E-1074		Graham/Sandell		5/18		N	0700	2000
LAS Engine E-1073		Smith/Cannon		5/18		N	0700	2000
LAS Engine E-1076		Turner/Colman		5/18		N	0700	2000
<b>ST# 18 ALS STPL O-84</b>		<b>Dan Lindley</b>		5/18	9	N	0700	2000
ALS Doz T3 E1398		Coburn/McCain		5/18		N	0700	2000
ALS Tractor Plow T3 E-1399		King/Nolan		5/18		N	0700	2000
OK Tractr Plw T3 E-1468		Akard/Jacobs		6/1		N	0700	2000
OK Tractr Plw T3 E-1469		Wayman/Tunnell		6/1		N	0700	2000
<b>Laurens Co. WT E-1228</b>		<b>Underwood/Edwards</b>		<b>5/23</b>	<b>2</b>	<b>N</b>	<b>0700</b>	<b>2000</b>
7. Control Operations Patrol, mop up and mitigate as well as respond to any threats posed by the fire.								
8. Special Instructions Contact for I/A dispatches is County Ranger Billy Leitch 912-218-9325 Linc 18*12022 Drive defensively- watch for city traffic. Be alert for traffic on Highways. Ensure all personnel wear PPE. Stay Hydrated. Take spot WX forecasts every hour. Remain in communications with resources and contractor. Contractor's link #: 18*14052 <b>LCES implemented by 1000 and notify OPS when completed</b>								
9. Division/Group Communication Summary								
Function	Frequency	System	Channel	Function	Frequency	System	Channel	
Command		King NIFC		Logistics		King NIFC		
Tactical Div/Group	DIV I, J, K	King NIFC	Talk Group 1 Ch. 10	Air to Ground	Talk Group 1	King NIFC	13	
Prepared by (Resource Unit Leader) Richard Gibbs / Dennis Register / Wes Moorehead(t)		Approved by (Planning Section Chief) /s/Les Rogers			Date 5/17/07		Time 1900	

<b>DIVISION ASSIGNMENT LIST</b>			1. Branch <b>Sweat Farm Fire</b>		2. Division/Group <b>ICP GROUP</b>		
3. Incident Name <b>Georgia Bay Complex</b>			4. Operational Period Date: <b>5-18-07</b> Time: <b>0700 - 2000</b>				
5. Operations Personnel							
Operations Chief		<b>David Abernathy O-738 5-19</b>		Division/ICT3		<b>Mike Appling O-223 5/31</b>	
		<b>Rich Gray O-77 5-15</b>					
		<b>Bill Woodyard O-136 5-21</b>					
Branch Director				Safety Officer		<b>Tim Sampson O-180 5/26</b>	
6. Resources Assigned this Period							
Strike Team/Task Force/ Resource Designator		Leader / Name		Last Shift Date	Number Persons	Trans. Needed	Drop Off PT./Time
<b>ST# 14 GFC T3 ST Tractor Plow O-1101</b>		<b>Levy Rentz</b>		6/2	6	N	Folkston 0700
Worth 71		E-1465.2		Barwick	6/2	N	Folkston 0700
NC DOZB		E-1105		Cook	5/31	N	Folkston 0700
NC Dozer T3		E-1106		Strider	5/31	N	Folkston 0700
Turner 70		E-2079		Jackson O-1102	6/2	N	Folkston 0700
Grady 71		E-2080		Bulter O-1103	6/2	N	Folkston 0700
7. Control Operations Position Equipment to Manage and Mitigate any Threats Posed by Uncontrolled Fires.							
8. Special Instructions Contact for I/A dispatches is County Ranger Billy Leitch 912-276-4001 Linc 18*12022 Drive defensively- watch for city traffic Be alert for traffic on Highways Ensure all personnel wear PPE. Stay Hydrated. Take spot WX forecasts every hour. Remain in communications with resources and contractor. Contractor's link #: 18*14052 <b>LCES implemented by 1000 and notify OPS when completed.</b>							
9. Division/Group Communication Summary							
Function	Frequency	System	Channel	Function	Frequency	System	Channel
Command		King NIFC		Logistics		King NIFC	
Tactical Div/Group	ICP Group	King NIFC	Talk Group 1 Ch. 11	Air to Ground	Talk Group 1	King NIFC	Ch. 13
Prepared by (Resource Unit Leader) Richard Gibbs / Dennis Register / Wes Moorehead(t)		Approved by (Planning Section Chief) /s/Les Rogers			Date 5/17/07		Time 1900

<b>DIVISION ASSIGNMENT LIST</b>				1. Branch <b>Sweat Farm Fire</b>		2. Division/Group <b>MANOR GROUP</b>	
3. Incident Name <b>Georgia Bay Complex</b>				4. Operational Period Date: <b>5-18-07</b> Time: <b>0700 - 2000</b>			
5. Operations Personnel							
Operations Chief		<b>David Abernathy O-738 5-19</b> <b>Rich Gray O-77 5-15</b> <b>Bill Woodyard O-136 5-21</b>		Division/ICT3		<b>Jay Collett O-250 5/31</b>	
Branch Director				Safety Officer		<b>Larry Miller O-38 5/28</b>	
6. Resources Assigned this Period							
Strike Team/Task Force/ Resource Designator		Leader / Name	Last Shift Date	Number Persons	Trans. Needed	Drop Off PT./Time	Pick Up PT./Time
<b>ST# 15 GFC ST Tractor Plow T3</b>		<b>Lonnie Calloway</b>	5/27	4	N	Swamp Church 0700	Manor 2000
Evans 70 E-1199		Sykes	5/27		N	Swamp Church 0700	Manor 2000
Jenkins 70 E-1198		Lane	5/27		N	Swamp Church 0700	Manor 2000
Bulloch 70 E-1200		Wells	5/27		N	Swamp Church 0700	Manor 2000
<b>ST# 16 GFC ST Tractor Plow T2 E-1343</b>		<b>Ty Hayman</b>	5/27	4	N	Swamp Church 0700	Manor 2000
GFC T2 Liberty 61/71 E-1344		Campbell	5/27		N	Swamp Church 0700	Manor 2000
GFC T2 Long 61/71 E-1345		Kitchens	5/27		N	Swamp Church 0700	Manor 2000
GFC Bryon 61/71 E-1346		Driggers	5/27		N	Swamp Church 0700	Manor 2000
<b>TFLD O-155</b>		<b>Loren Suazo</b>	5/24	1	N	Swamp Church 0700	Manor 2000
<b>ST# 17 STEN (T) O-183</b>		<b>Reggie Day</b>	5/26	5	N	Swamp Church 0700	Manor 2000
VAF Engine T6 E-57		Collett	5/21		N	Swamp Church 0700	Manor 2000
NMF Engine T6 E-56		Trujillo	5/22		N	Swamp Church 0700	Manor 2000
NMF Eng #236 T6 E-60		Alirez	5/22		N	Swamp Church 0700	Manor 2000
<b>ST#19 NC ST Tractor Plow T2 E-2660</b>		<b>Dean Lucas</b>	5/27	1	N	Swamp Church 0700	Manor 2000
NC Mechanic E-2661		David Corey	5/27	1	N	Swamp Church 0700	Manor 2000
NC TPL T2 E-2662		Shepherd / Bell	5/27	2	N	Swamp Church 0700	Manor 2000
NC TPL T2 E-2663		Endicott / Dunn	5/27	2	N	Swamp Church 0700	Manor 2000
NC TPL T2 E-2664		Sidbury / Huttlinger	5/27	2	N	Swamp Church 0700	Manor 2000
7. Control Operations Position Equipment to Manage and Mitigate any Threats Posed by Uncontrolled Fires.							
8. Special Instructions Drive defensively- watch for city traffic. Remain in communications with resources and contractor. Contractor's link #: 18*14052 Be alert for traffic on Highways. Stay Hydrated. Ensure all personnel wear PPE. Take spot WX forecasts every hour. <b>LCES implemented by 1000 and notify OPS when completed.</b>							
9. Division/Group Communication Summary							
Function	Frequency	System	Channel	Function	Frequency	System	Channel
Command		King NIFC		Logistics		King NIFC	
Tactical Div/Group	Manor Group	King NIFC	Talk Group 1 Ch. 11	Air to Ground	Talk Group 1	King NIFC	Ch. 13
Prepared by (Resource Unit Leader) Richard Gibbs / Dennis Register / Wes Moorehead(t)		Approved by (Planning Section Chief) <i>/s/Les Rogers</i>		Date May 17, 2007		Time 1900	



<b>DIVISION ASSIGNMENT LIST</b>			1. Branch <b>Sweat Farm Fire</b>		2. Division/Group <b>Day Shift/Structure Protection</b>		
3. Incident Name <b>Georgia Bay Complex</b>			4. Operational Period Date: <b>5-18-07</b> Time: <b>0700 - 2000</b>				
5. Operations Personnel							
Operations Chief		<b>David Abernathy O-738 5-19</b> <b>Rich Gray O-77 5-15</b> <b>Bill Woodyard O-136 5-21</b>		Division/ICT3		<b>Nate Leising O-97 5/20</b> <b>Jerome Harvey O-889 5/24-6/1</b>	
Branch Director				Safety Officer			
6. Resources Assigned this Period							
Strike Team/Task Force/ Resource Designator		Leader / Name	Last Shift Date	Number Persons	Trans. Needed	Drop Off PT./Time	Pick Up PT./Time
GA DOC TF		Rick Huggins 11*3204 cell 770-330-7246		1	N	Diversion Center	Diversion Center
		Don Shugart 54*240		1	N	Diversion Center1000	Diversion Center2000
		Larry Brown 11*32063		1	N	Diversion Center1000	Diversion Center2000
GDC Autry T1		<b>Delk</b>	5/21	5	N	Diversion Center1000	Diversion Center2000
GDC Wilcox T1		<b>Culpepper</b>	5/21	5	N	Diversion Center1000	Diversion Center2000
GDC Telfair T3		<b>Thomas</b>	5/21	6	N	Diversion Center1000	Diversion Center2000
GDC Montgomery Rescue		<b>Helms/Sharp</b>	5/21	6	N	Diversion Center1000	Diversion Center2000
GDC Macon T6		<b>Price</b>	5/21	8	N	Diversion Center1000	Diversion Center2000
GDC Dooly T6		<b>Hudson</b>	5/21	3	N	Diversion Center1000	Diversion Center2000
GDC Dooly WT			5/21	2	N	Diversion Center1000	Diversion Center2000
GDC Wayne T3		<b>Horton</b>	5/21	2	N	Diversion Center1000	Diversion Center2000
GDC Wayne T6			5/21	2	N	Diversion Center1000	Diversion Center2000
GDC Wayne WT			5/21	2	N	Diversion Center1000	Diversion Center2000
GSP T3		<b>Rogers</b>	5/21	3	N	Diversion Center1000	Diversion Center2000
GSP Rescue			5/21	3		Diversion Center1000	Diversion Center2000
GDC West GA. H/C		<b>Roberts</b>	5/21	8	N	Diversion Center1000	Diversion Center2000
GDC Lee Arendale H/C		<b>Maher</b>	5/21	10	N	Diversion Center1000	Diversion Center2000
GDC Paulding H/C		<b>Cox/Foley</b>	5/21	8	N	Diversion Center1000	Diversion Center2000
7. Control Operations Provide population/structure/infrastructure protection and preparation where needed. Continue to Gather GIS Data. Provide Mop Up around structures and support Division Mop Up. Coordinate with Red Team where applicable. Provide Firewise and Fire Prevention information to the public. Coordinate with DIVS.							
8. Special Instructions Remain in communications. Stay Hydrated. Be alert for traffic on Highways Ensure all personnel wear PPE. <b>Way Cross Structures GEMA 40 Southern Linc 18*11049</b> <b>Red Team Structures Contact Info. Bill Bell 18*12537 Dennis Hackett 404-354-4415 or 352-279-6977 5/16</b> <b>Jessie Jordan Ware Co. FD 44*4042 912-281-6541</b> <b>Ware County Fuel Tender -- Tony Leverett 912-288-3295</b> <b>Clinch County Fire/EMA - Jesse Booth 25*255 919-482-3700</b> <b>LCES implemented by 1000 and notify OPS when completed.</b>							
9. Division/Group Communication Summary							
Function	Frequency	System	Channel	Function	Frequency	System	Channel
Command		King NIFC		Logistics		King NIFC	
Tactical Div/Group	DIV - Day Structure	King NIFC	Talk Group1 Ch. 3	Air to Ground	Talk Group 1	King NIFC	Ch. 13
Prepared by (Resource Unit Leader) Gibbs / Register / Moorehead(t)		Approved by (Planning Section Chief) /s/Les Rogers			Date 5/17/07		Time 1900

<b>DIVISION ASSIGNMENT LIST</b>				1. Branch <b>Sweat Farm Fire / Bugaboo Scrub II</b>		2. Division/Group <b>Swing Shift / Structures Group</b>	
3. Incident Name <b>Georgia Bay Complex</b>				4. Operational Period Date: <b>5-18-07</b> Time: <b>1500 - 0300</b>			
5. Operations Personnel							
Operations Chief		<b>David Abernathy O-738 5-19</b> <b>Rich Gray O-77 5-15</b>		Division/ICT3		<b>Bob Habeck O-101 5/19</b>	
Branch Director		<b>Buck Kline</b>		Safety Officer		<b>Ronnie Hamm O-1020 5/29</b>	
6. Resources Assigned this Period							
Strike Team/Task Force/ Resource Designator		Leader / Name	Last Shift Date	Number Persons	Trans. Needed	Drop Off PT./Time	Pick Up PT./Time
<b>ST# 21 GFC ST Tractor Plow T3 E-2714</b>		<b>Lucas O-1005</b>	5/28	4	N	Fargo 1500	Fargo 0300
GFC TPL E-2694 O-1006		A. Smith	5/28		N	Fargo 1500	Fargo 0300
GFC TPL E-2696 O-1008		C. Thomas	5/28		N	Fargo 1500	Fargo 0300
GFC TPL E-2695 O-1007		D. Veal	5/28		N	Fargo 1500	Fargo 0300
<b>GEMA Grady WT E-2601</b>		<b>Micah Freeman</b>	5/22	1	N	Fargo 1500	Fargo 0300
<b>ST# 20 STEN T6</b>		<b>Weaver</b>	5/20	7	N	Fargo 1500	Fargo 0300
TX PVT Engine E-44		Sims/Judd	5/20		N	Fargo 1500	Fargo 0300
TX PVT #701 Engine E-45		McInnis	5/20		N	Fargo 1500	Fargo 0300
TXF #31 Engine E-46		Beakley/Salcido Calahan	5/20		N	Fargo 1500	Fargo 0300
USFS Engine T6 E-47		Woodward/Pannell	5/22	2	N	Fargo 1500	Fargo 0300
<b>S/T 28 STEN O-179</b>		Craig Gilbert	5/25	1	N	Fargo 1500	Fargo 0300
LA ENG T6 #21095		Allen/Odom	6/2	2	N	Fargo 1500	Fargo 0300
USFS ENG T6 E-6		Ramey/Lament/Proctor	5/26	3	N	Fargo 1500	Fargo 0300
USFS ENG T6 E-10		Rokosh/Grondin Moe/Hart	5/26	4	N	Fargo 1500	Fargo 0300
AZ SFD ENG T6 E-11		Ingroo/Krevn/Wells	5/26	3	N	Fargo 1500	Fargo 0300
USFS ENG T6 E-13		Muir/Zanotto/Rigaud	5/26	3	N	Fargo 1500	Fargo 0300
<b>TF2 STEN T6 Engine O-682</b>		<b>Stinson , Mark</b>	5/21	1	N	Swamp Rd 1500	Swamp Rd 0300
TX Eng 4460 E-1181		Sinderud/ Kelley	5/21	1	N	Swamp Rd 1500	Swamp Rd 0300
GA-GAS ENG T6 E-2065		Ross/Carrol	5/23	2	N	Swamp Rd 1500	Swamp Rd 0300
GA-GAS ENG T6 E-1906		Joy/Berry	5/23	2	N	Swamp Rd 1500	Swamp Rd 0300
MN PVT #6 Engine E-26		G. Rock-C. Tucker	5/29	2	N	Swamp Rd 1500	Swamp Rd 0300
7. Control Operations Patrol and Mop Up West of Swamp Rd. Provide Structure Protection as needed. Coordinate with DIVS							
8. Special Instructions Remain in communications. Be alert for traffic on Highways. Stay Hydrated. Ensure all personnel wear PPE. Take spot forecasts every hour. <b>Stinson strike team will patrol and mop up west of Swamp Rd. Remainder of resources assigned to Fargo will assist with structure protection and related activities</b> Clinch County Fire/EMA - Jesse Booth 25*255 919-482-3700 <b>LCES implemented by 1000 and notify OPS when completed.</b>							
9. Division/Group Communication Summary							
Function	Frequency	System	Channel	Function	Frequency	System	Channel
Command		King NIFC		Logistics		King NIFC	
Tactical Div/Group	DIV - Swing Shift	King NIFC	Talk Group 2 Ch. 7	Air to Ground	Talk Group 1	King NIFC	
Prepared by (Resource Unit Leader) Gibbs / Register / Moorehead(t)			Approved by (Planning Section Chief) /s/Les Rogers			Date May 17, 2007	
						Time 1900	



<b>DIVISION ASSIGNMENT LIST</b>				1. Branch <b>Bugaboo Scrub II</b>		2. Division/Group <b>Fargo Group 1</b>		
3. Incident Name <b>Georgia Bay Complex</b>				4. Operational Period Date: <b>5-18-07</b> Time: <b>0700 - 2000</b>				
5. Operations Personnel								
Operations Chief		<b>David Abernathy O-738 5-19</b> <b>Rich Gray O-77 5-15</b> <b>Bill Woodyard O-136 5/21</b>		Division/ICT3		<b>David Ziegler O-742 5/19</b> <b>Shane Crimm STSP O-737 5/19</b>		
Branch Director		<b>Buck Kline O-553 5/23</b>		Safety Officer		<b>Harry Kepler O-66 5/27</b> <b>Andy Meadows O-936 5/28</b>		
6. Resources Assigned this Period								
Strike Team/Task Force/ Resource Designator		Leader / Name		Last Shift Date	Number Persons	Trans. Needed	Drop Off PT./Time	Pick Up PT./Time
<b>TFLD O-153</b>		<b>Dave Larson</b>		5/24	1	N	Superior Pine 0700	Superior Pine 2000
<b>ST# 22 TF Eng T3 TFLD O-149</b>		<b>Mike Leach</b>		5/24	13	N	Superior Pine 0700	Superior Pine 2000
AZS Eng T6 E-58		Walters/Reitz/Westerman		5/24		N	Superior Pine 0700	Superior Pine 2000
Rye 66 T3 E-66		Thompson/Biggs/bennett		5/24		N	Superior Pine 0700	Superior Pine 2000
CO Platte Canyon T3 E-65		Brugett/Tighe/Popovich		5/24		N	Superior Pine 0700	Superior Pine 2000
COS #312 T6 E-67		Roetker/Lack/Groome		5/24		N	Superior Pine 0700	Superior Pine 2000
<b>ST# 23 GFC ST Engines T6 O-618</b>		<b>Bryan Spillers</b>		5/28		N	Superior Pine 0700	Superior Pine 2000
Mitchell E-1019		Sheffield/Redding		5/28		N	Superior Pine 0700	Superior Pine 2000
Early E-1016		Robinson/Moore		5/28		N	Superior Pine 0700	Superior Pine 2000
Johnson E-1021		Fowler/Garbutt		5/28		N	Superior Pine 0700	Superior Pine 2000
PVT Smokey Mt II E-42		Scroggs/Little		5/19		N	Superior Pine 0700	Superior Pine 2000
PVT Smokey Mt III E-43		Bartlett/Benton		5/19		N	Superior Pine 0700	Superior Pine 2000
<b>ST# 24 GAS ST Tractor Plow T3 O-3001</b>		<b>Tony Harkins 18*10639</b>		5/18	7	N	Edith Comm 0700	Edith Comm 2000
GAS Coweta 70 E-2048		Chad Dorminey		5/19		N	Edith Comm 0700	Edith Comm 2000
GAS Coweta 72 E-2047		Jeff Monsaur		5/19		N	Edith Comm 0700	Edith Comm 2000
GAS Walton 62/72 T5 E-1047		Payton Turner		5/18		N	Edith Comm 0700	Edith Comm 2000
GA DOT WT + 1Supervisor					2	N	Edith Comm 0700	Edith Comm 2000
GA DOT WT					1	N	Edith Comm 0700	Edith Comm 2000
GA DOT WT					1	N	Edith Comm 0700	Edith Comm 2000
7. Control Operations <b>Structure defense preparation along with positioning equipment to manage and mitigate any threats posed by uncontrolled fires.</b>								
8. Special Instructions Remain in communications. Be alert for traffic on Highways. Stay Hydrated. Ensure all personnel wear PPE. Take spot WX forecasts every hour. <b>Clinch County Fire/EMA – Jesse Booth 25*255 919-482-3700</b> <b>LCES implemented by 1000 and notify OPS when completed</b>								
9. Division/Group Communication Summary								
Function	Frequency	System	Channel	Function	Frequency	System	Channel	
Command		King NIFC		Logistics		King NIFC		
Tactical Div/Group	Fargo Group 1	King NIFC	Talk Group 2 Ch. 11	Air to Ground	Talk Group 1	King NIFC	Ch. 13	
Prepared by (Resource Unit Leader) Gibbs/ Register / Moorehead(t)		Approved by (Planning Section Chief) /s/Les Rogers			Date May 17, 2007		Time 1900	

<b>DIVISION ASSIGNMENT LIST</b>			1. Branch <b>Bugaboo Scrub II</b>		2. Division/Group <b>Fargo Group 2</b> Page 1 of 2		
3. Incident Name <b>Georgia Bay Complex</b>			4. Operational Period Date: <b>5-18-07</b> Time: <b>0700 - 2000</b>				
5. Operations Personnel							
Operations Chief		<b>David Abernathy O-738 5-19</b> <b>Rich Gray O-77 5-15</b> <b>Bill Woodyard O-136 5/21</b>		Division/ICT3		<b>Rusty Smith O-743 5/19</b> <b>Shane Crimm STSP O-737 5/19</b>	
Branch Director		<b>Buck Kline O-553 5/23</b>		Safety Officer		<b>Harry Kepler O-66 5/27</b> <b>Andy Meadows O-936 5/28</b>	
6. Resources Assigned this Period							
Strike Team/Task Force/ Resource Designator		Leader / Name	Last Shift Date	Number Persons	Trans. Needed	Drop Off PT./Time	Pick Up PT./Time
<b>TF2 TFLD O-156</b>		<b>Matt Young</b>	5/24	1	N	Superior Pine 0700	2000
<b>DOZB O-147</b>		<b>R. Briggs</b>	5/23	3	N	Superior Pine 0700	2000
ARK T1 DOZ E-28		Vines	Off Duty	1	N	Superior Pine 0700	2000
Timberline D6 Doz T2 E-1084					N	Superior Pine 0700	2000
<b>DOZB O-146</b>		<b>Seekins</b>	5/22	1	N	Superior Pine 0700	2000
<b>ST# 10 GFC ST Tractor Plow T3 O-874</b>		<b>Donnie Brannon</b>	5/23	4	N	Superior Pine 0700	2000
Jenkins 72 E-1218		Gay	5/23		N	Superior Pine 0700	2000
Tattnal 72 E-1216		Terrell	5/23		N	Superior Pine 0700	2000
Emanuel 60/70 E-1217		Claxton	5/23		N	Superior Pine 0700	2000
7. Control Operations <b>Hold and improve fire break and coordinate suppression with adjacent resources</b>							
8. Special Instructions Remain in communications. Be alert for traffic on Highways. Stay Hydrated. Take spot WX forecasts every hour. Ensure all personnel wear PPE.  <b>Clinch County Fire/EMA - Jesse Booth 25*255 919-482-3700</b>  <b>LCES implemented by 1000 and notify OPS when completed.</b>							
9. Division/Group Communication Summary							
Function	Frequency	System	Channel	Function	Frequency	System	Channel
Command		King NIFC		Logistics		King NIFC	
Tactical Div/Group	Fargo Group 2	King NIFC	Talk Group 2 Ch. 5	Air to Ground	Talk Group 1	King NIFC	Ch. 13
Prepared by (Resource Unit Leader) Richard Gibbs / Dennis Register / Wes Moorehead(t)			Approved by (Planning Section Chief) <i>/s/Les Rogers</i>		Date May 17, 2007		Time 1900

<b>DIVISION ASSIGNMENT LIST</b>			1. Branch <b>Bugaboo Scrub II</b>		2. Division/Group <b>Fargo Group 2</b> Page 2 of 2		
3. Incident Name <b>Georgia Bay Complex</b>			4. Operational Period Date: <b>5-17-07</b> Time: <b>0700 - 2000</b>				
5. Operations Personnel							
Operations Chief		<b>David Abernathy O-738 5-19</b> <b>Rich Gray O-77 5-15</b> <b>Bill Woodyard O-136 5/21</b>		Division/ICT3		<b>Rusty Smith O-743 5/19</b> <b>Shane Crimm STSP O-737 5/19</b>	
Branch Director		<b>Buck Kline O-553 5/23</b>		Safety Officer		<b>Harry Kepler O-66 5/27</b> <b>Andy Meadows O-936 5/28</b>	
6. Resources Assigned this Period							
Strike Team/Task Force/ Resource Designator		Leader / Name	Last Shift Date	Number Persons	Trans. Needed	Drop Off PT./Time	Pick Up PT./Time
<b>TFLD O-157</b>		<b>Chris Bartlett</b>	5/24	1	N	Superior Pine 0700	2000
<b>ST# 25 LA ST Tractor Plow T2 O-661</b>		<b>Mike Smith</b>	5/18	11	N	Superior Pine 0700	2000
LAS 81 TPL T2 E-1102		Stokes/Swett	5/18	2	N	Superior Pine 0700	2000
LAS 82 TPL T2 E-1103		Switzer/Purvis	5/18	2	N	Superior Pine 0700	2000
<b>ST# 26 STPL O-150</b>		<b>Chris Bartlett</b>	5/24	1	N	Superior Pine 0700	2000
TXS Tractor Plow T2 E-1452		Ramsey P. Williams	5/22 5/30	2	N	Superior Pine 0700	2000
TXS Tractor Plow T2 E-1453		Mitchell/Bell	5/30	2	N	Superior Pine 0700	2000
TXS Tractor Plow T2 E-1376		Elrod/Wiley	5/25	2	N	Superior Pine 0700	2000
<b>TF# 4 TFLD O-152</b>		<b>David Hamilton</b>	5/24	1	N	Superior Pine 0700	2000
ALS TPL T2 E-1110		Robinson/Taggart	5/31	2	N	Superior Pine 0700	2000
ALS TPL T2 E-1109		Chesser/Knighten	5/31	2	N	Superior Pine 0700	2000
<b>TF# 5 TFLD O-744</b>		<b>Brendon McNeil (T)</b>	5/19	4	N	Superior Pine 0700	2000
<i>Lee Ind. T1 Doz Komatsu E1085</i>		<i>Harold</i>		1	N	Superior Pine 0700	2000
<i>Lee Ind. T1 Doz Komatsu E1193</i>		<i>Sermans</i>		1	N	Superior Pine 0700	2000
7. Control Operations <b>Hold and improve fire break and coordinate suppression with adjacent resources</b>							
8. Special Instructions Remain in communications. Be alert for traffic on Highways. Stay Hydrated. Take spot WX forecasts every hour. Ensure all personnel wear PPE. <b>Clinch County Fire/EMA – Jesse Booth 25*255 919-482-3700</b> <b>LCES implemented by 1000 and notify OPS when completed.</b>							
9. Division/Group Communication Summary							
Function	Frequency	System	Channel	Function	Frequency	System	Channel
Command		King NIFC		Logistics		King NIFC	
Tactical Div/Group	Fargo Group 2	King NIFC	Talk Group 2 Ch. 5	Air to Ground	Talk Group 1	King NIFC	Ch. 13
Prepared by (Resource Unit Leader) Richard Gibbs / Dennis Register / Wes Moorehead(t)		Approved by (Planning Section Chief) <i>/s/Les Rogers</i>			Date May 16, 2007		Time 1900

<b>DIVISION ASSIGNMENT LIST</b>				1. Branch <b>Sweat Farm Fire</b>		2. Division/Group <b>Law Enforcement / Arson Group</b>	
3. Incident Name <b>Georgia Bay Complex</b>				4. Operational Period Date: <b>5-18-07</b> Time: <b>0700 - 2000</b>			
5. Operations Personnel							
Operations Chief				Division/ICT3			
Branch Director				Safety Officer			
6. Resources Assigned this Period							
Strike Team/Task Force/ Resource Designator	Leader / Name	Last Shift Date	Number Persons	Trans. Needed	Drop Off PT./Time	Pick Up PT./Time	
<b>V DOF</b>	<b>William Neff</b>			N	0700	2000	
G.B.I	Tom Crawford			N	0700	2000	
G.B.I	Richard Dial			N	0700	2000	
G.B.I	Tammy Starkey			N	0700	2000	
GA. Fire Marshal	Brian Clavier			N	0700	2000	
GA. Fire Marshal	Ty Moorman			N	0700	2000	
WV DOF	Don Kelley			N	0700	2000	
WV DOF	John Bird			N	0700	2000	
V DOF	David Edwards			N	0700	2000	
V DOF	Ken Mohler			N	0700	2000	
V DOF	Cody Daniels			N	0700	2000	
LAS	Jim Baldwin O-985			N	0700	2000	
LAS	Mark Singleton O-984			N	0700	2000	
7. Control Operations							
8. Special Instructions Remain in communications. Be alert for traffic on Highways Stay Hydrated. Notify Division of spot fires or reburns							
9. Division/Group Communication Summary							
Function	Frequency	System	Channel	Function	Frequency	System	Channel
Command		King NIFC		Logistics		King NIFC	
Tactical Div/Group		King NIFC		Air to Ground		King NIFC	
Prepared by (Resource Unit Leader) Richard Gibbs / Dennis Register / Wes Moorehead(t)		Approved by (Planning Section Chief) <i>/s/Les Rogers</i>		Date May 17, 2007		Time 1900	

<b>DIVISION ASSIGNMENT LIST</b>				1. Branch <b>Bugaboo Scrub II</b>		2. Division/Group <b>Fargo Group 3</b>		
3. Incident Name <b>Georgia Bay Complex</b>				4. Operational Period Date: <b>5-18-07</b> Time: <b>0700 - 2000</b>				
5. Operations Personnel								
Operations Chief		<b>David Abernathy O-738 5-19</b> <b>Rich Gray O-77 5-15</b> <b>Bill Woodyard O-136 5/21</b>		Division/ICT3		<b>Jim Davis O-604 5/16</b> <b>Shane Crimm STSP O-737 5/19</b>		
Branch Director		<b>Buck Kline</b>		Safety Officer		<b>Harry Kepler O-66 5/27</b> <b>Andy Meadows O-936 5/28</b>		
6. Resources Assigned this Period								
Strike Team/Task Force/ Resource Designator		Leader / Name		Last Shift Date	Number Persons	Trans. Needed	Drop Off PT./Time	Pick Up PT./Time
<b>TFLD O-154</b> <b>O-158</b>		<b>Blain Tarbell</b> <b>Waylon Poowegup(T)</b>		5/25	2	N	Superior Pine 0700	2000
<b>ST# 9 STEN</b> <b>132</b>		<b>O- Van Kamen</b>		5/25	1	N	Superior Pine 0700	2000
CA/INF #32 T3 E-75		Richard Napoles		5/26	5	N	Superior Pine 0700	2000
LNF T3 E-64		Reynolds		5/25	5	N	Superior Pine 0700	2000
GFC T3 E-2656		Flood/Laughlin		5/27	2	N	Superior Pine 0700	2000
<b>TF# 6</b> <b>150</b>		<b>O- Ron Baar</b>		5/24	1	N	Superior Pine 0700	2000
Support Fire T6 E-12		Zuehlke		5/24	2	N	Superior Pine 0700	2000
DNR Engine T6 E-541		Kamack/Castleberry		5/30	2	N	Superior Pine 0700	2000
Ft. Stewart TP T2 E-2509		Bryant		5/18	2	N	Superior Pine 0700	2000
Ft. Stewart TP T2 E-2508		Crowley		5/18	1	N	Superior Pine 0700	2000
7. Control Operations <b>Structure defense preparation along with positioning equipment to manage and mitigate any threats posed by uncontrolled fires.</b>								
8. Special Instructions Remain in communications Stay Hydrated. Ensure all personnel wear PPE. Be alert for traffic on Highways Take spot WX forecasts every hour. <b>Clinch County Fire/EMA - Jesse Booth 25*255 919-482-3700</b>  <b>LCES implemented by 1000 and notify OPS when completed.</b>								
9. Division/Group Communication Summary								
Function	Frequency	System	Channel	Function	Frequency	System	Channel	
Command		King NIFC		Logistics		King NIFC		
Tactical Div/Group	Fargo Group 3	King NIFC	Talk Group 2 Ch. 8	Air to Ground	Talk Group 1	King NIFC	Ch. 13	
Prepared by (Resource Unit Leader) Richard Gibbs / Dennis Register / Wes Moorehead(t)			Approved by (Planning Section Chief) <i>/s/Les Rogers</i>			Date May 17, 2007	Time 1900	



<b>DIVISION ASSIGNMENT LIST</b>				1. Branch <b>Sweat Farm Fire</b>		2. Division/Group <b>Law Enforcement / Arson Group</b>	
3. Incident Name <b>Georgia Bay Complex</b>				4. Operational Period Date: <b>5-18-07</b> Time: <b>0700 - 2000</b>			
5. Operations Personnel							
Operations Chief				Division/ICT3			
Branch Director				Safety Officer			
6. Resources Assigned this Period							
Strike Team/Task Force/ Resource Designator	Leader / Name	Last Shift Date	Number Persons	Trans. Needed	Drop Off PT./Time	Pick Up PT./Time	
<b>V DOF</b>	<b>William Neff</b>			N	0700	2000	
G.B.I	Tom Crawford			N	0700	2000	
G.B.I	Richard Dial			N	0700	2000	
G.B.I	Tammy Starkey			N	0700	2000	
GA. Fire Marshal	Brian Clavier			N	0700	2000	
GA. Fire Marshal	Ty Moorman			N	0700	2000	
WV DOF	Don Kelley			N	0700	2000	
WV DOF	John Bird			N	0700	2000	
V DOF	David Edwards			N	0700	2000	
V DOF	Ken Mohler			N	0700	2000	
V DOF	Cody Daniels			N	0700	2000	
LAS	Jim Baldwin O-985			N	0700	2000	
LAS	Mark Singleton O-984			N	0700	2000	
7. Control Operations							
8. Special Instructions Remain in communications. Be alert for traffic on Highways Stay Hydrated. Notify Division of spot fires or reburns							
9. Division/Group Communication Summary							
Function	Frequency	System	Channel	Function	Frequency	System	Channel
Command		King NIFC		Logistics		King NIFC	
Tactical Div/Group		King NIFC		Air to Ground		King NIFC	
Prepared by (Resource Unit Leader) Richard Gibbs / Dennis Register / Wes Moorehead(t)		Approved by (Planning Section Chief) <i>/s/Les Rogers</i>		Date May 17, 2007		Time 1900	

<b>DIVISION ASSIGNMENT LIST</b>			1. Branch <b>Sweat Farm Fire</b>		2. Division/Group <b>Prevention Team Task Force</b>			
3. Incident Name <b>Georgia Bay Complex</b>			4. Operational Period Date: <b>5-18-07</b> Time: <b>06:30 - 2200</b>					
5. Operations Personnel								
Operations Chief		<b>David Abernathy O-738 5-19</b> <b>Rich Gray O-77 5-15</b>		Division/ICT3				
Branch Director				Safety Officer				
6. Resources Assigned this Period								
Strike Team/Task Force/ Resource Designator		Leader / Name		Last Shift Date	Number Persons	Trans. Needed	Drop Off PT./Time	Pick Up PT./Time
Team Leader		John R. Warner O-177		05/29				
Team Member		Sandra Taylor O-178		05/30				
Team Member/PIO		Donna Wilson O-30.2		05/25				
Team Liaison Officer GA		Roger Lane O-580		05/30				
7. Control Operations								
8. Special Instructions								
<ol style="list-style-type: none"> <li>1. <b>AM Briefing with Branch/county and local officials in Fargo (Wilson/Taylor)</b></li> <li>2. <b>Develop 3-Prong Attack Campaign (Newsprint/Radio/TV) for Sharon Dolliver, communication department - GFC</b></li> <li>3. <b>Finalize PSAs going out to 350 radio stations for Memorial Day week campaign for Sharon Dolliver</b></li> <li>4. <b>Finalize insert Firewise "Living with Fire" to go out for Memorial Day week campaign</b></li> <li>5. <b>Provide 1,600 inserts for the Clinch County News, Homerville to go out week of 05/20</b></li> <li>6. <b>Photo documentation of Firewise and timber harvesting in burned areas for Alan Dozier, GFC</b></li> <li>7. <b>Complete Extension partnership with distribution points with county offices</b></li> <li>8. <b>Complete article for UGA Master Naturalist program concerning Firewise Landscaping, Fire in the Forest Ecology, Prevention of Human Caused Fires (2500 people) – and provide Train the Trainer training (Warner/Taylor)</b></li> <li>9. <b>PM - Complete table top prevention card for distribution – pending approval by GFC (Taylor)</b></li> </ol>								
9. Division/Group Communication Summary								
Function		Frequency		System		Channel		
Command				King NIFC				
Tactical Div/Group				King NIFC				
				Air to Ground				
Prepared by (Resource Unit Leader) Gibbs/Moorehead			Approved by (Planning Section Chief) /s/Les Rogers			Date 5/13/07		Time 1900

WEATHER FORECAST

FORECAST NO: 29

NAME OF FIRE: Sweat Farm Road &  
Bugaboo Scrub II

PREDICTION FOR: Day &amp; Evening Ops

UNIT: Georgia Forestry Commission

SHIFT DATE: Friday 05/18/07

SIGNED: John Quagliariello

TIME AND DATE 1800

Incident Meteorologist

FORECAST ISSUED: 05/17/07

**WEATHER DISCUSSION:** High pressure will build over the area today and Saturday. This high will bring gusty north to northeast winds to region, along with very dry conditions.

The main concern is:

1. Very dry conditions and gusty winds today and Saturday

---

**WEATHER FORECAST DAY SHIFT FRIDAY:*****...CRITICAL FIRE WEATHER CONDITIONS POSSIBLE TODAY...***

**WEATHER:** Mostly clear in the morning, then becoming partly cloudy around midday. Areas of smoke around Fargo.

**MAX TEMPERATURES:** 80 to 84 (24 hour trend ~ 4 degrees lower)

**MIN HUMIDITY:** 23-27%, except 20 to 24% near fire perimeters (24 hour trend ~ 20 percent lower)

**20 FT WINDS:** North 5 to 9 mph, increasing to 11 to 15 mph around midday, then shifting east-northeast after 1700. Wind gusts to 21 mph.

**STABILITY/INVERSION:** Inversion around 800 ft dissipating by 1000. Mixing heights around 6500 ft. Dispersion index around 61. Haines Index 5.

---

**WEATHER FORECAST NIGHT SHIFT FRIDAY NIGHT:**

**WEATHER:** Clear. Areas of smoke around Fargo, locally dense.

**MIN TEMPERATURES:** 53 to 57, except 51 to 55 near Fargo.

**MAX HUMIDITY:** Recovery around 60 percent near the fire perimeter and around 80 percent elsewhere.

**20 FT WINDS:** East 4 to 9 mph, becoming north-northeast 2 to 5 mph.

**STABILITY/INVERSION:** Inversion around 300 ft beginning to develop after 2100. Dispersion index around 5.

---

**OUTLOOK FOR SATURDAY:**

Mostly sunny. High temperatures 80 to 84. Minimum RH values 21 to 25%. Northeast winds 4 to 8 mph with gusts to 15 mph, increasing to 9 to 13 mph with gusts to 20 mph around midday, then sifting east after 5 pm.

---

**EXTENDED...SUNDAY THROUGH WEDNESDAY:**

Sunday: Mostly clear. Lows in the lower 50s. Highs in the mid 80s. Northeast winds 5 to 10 mph.

Monday: Mostly clear. Lows in the mid 50s. Highs in the mid 80s. East winds 5 to 10 mph.

Tuesday: Partly cloudy. Lows around 60. Highs in the mid 80s. East winds around 10 mph.

Wednesday: Partly cloudy. Lows in the lower 60s. Highs in the mid 80s. Northeast winds around 10 mph.

**☐ SAFETY MESSAGE**

**Incident:**

Georgia Bay Complex

**Date:**

May 18, 2007

**Time:**

Day & Night Shift

**Major Hazards and Risks:**

- Weather
- Snags
- Initial Attack
- Wildland Urban Interface
- Reburn near the line
- Complacency
- Driving/Travel
- Aircraft Operations

*“Safety is an Attitude, approach every task with Safety First”*

**Caution: Fire has weakened the root systems of snags and some green trees throughout the fire area.**

Gusts of strong wind can occur on the fire; the possibility of snags and green trees falling will increase. Pay close attention while Cutting, Working, and Traveling around the fire area. The possibility of injury is very real.

**LOOK UP, LOOK DOWN, LOOK AROUND**

Visibility of all resources is extremely difficult in areas of heavy smoke or dust. Use headlights at all times. Be sure before crossing uncontrolled railroad crossings that you stop, look and listen.



6. INSTRUCTIONS AND ASSIGNMENTS NOT CLEAR

**Safety Team : Brian Beisel, Harry Kepler, Ronnie Hamm  
Steve Snider, Tim Sampson, John Orton, Andy Meadows  
Larry Miller, Phil Spor, & Rodney Bell**

## Fire Behavior Forecast

<b><u>Forecast No. 29</u></b>	<b><u>Prediction for Day Shift</u></b>
<b><u>Name of Fire: Sweat Farm Road</u></b>	<b><u>Shift Date: Tuesday May 18, 2007</u></b>
<b><u>Time and Date Forecast Issued</u></b> <b><u>1800 hrs 5/17/2007</u></b>	<b><u>Signed : <i>John Robertson</i></u></b> <b><u>Fire Behavior Analyst</u></b>

### **Weather Summary (See Detailed Weather Forecast in the IAP):**

The passing of the front yesterday has left us with dry unstable air and gusty northerly winds. Winds will be north 5 to 9 mph in the morning increasing to 15 by mid day. After 1700 wind will shift towards the east-northeast. Gusts to 21 mph. Maximum temperature 84 degrees. Minimum RH 23%, except 20% near the fire. Mostly clear in the morning becoming partly cloudy around mid day. Haines Index 5.

**General Fire Behavior:** The effect of yesterday's cooler and moist conditions will be short lived. Even though temperatures may not change much, the relative humidity will drop significantly. Large dead fuel and live fuels are slow to react to the brief rain and therefore will remain at critically low moisture contents. Fine fuel will dry out rapidly when exposed to the sun and reach its lowest moisture content between 1600 and 1900. During this period all fuels will react with a significant increase in fire behavior. The potential for high to very high fire behavior in swamp shrub, pine and southern rough fuels will increase after a few hours of sun and become active by noon. Very active fire behavior is likely after 1400 with a window for extreme fire behavior from 1600 to 1900. Swamp shrub fuels could support short duration crown fire during the late afternoon with spotting out to 300 yards. Young closed canopy pine plantations will support crown fire during the late afternoon. Southern rough and thinned pine plantations will support group tree and single tree torching that will produce spotting of ¼ mile or more. The northerly wind will push fire edge and create spots to the south. The unstable atmosphere will allow for large fire growth.

### **Specific Fire Behavior:**

**Fargo:** The low RH, critical live fuel moisture and wind will continue to provide an opportunity for torching to occur in pine fuels and swamp shrub fuels. As a result, interior fire has the potential to spot back over the line under the influence of the northeast winds late in the day.

**Sweat Farm Road:** Infrared detection has identified numerous hotspots in this fire. The low afternoon RH and brisk wind will provide the necessary conditions for re-burning in needle cast. The weather will also provide an incentive for torching and crowning in swamp shrub fuels even though the temperature is below the 85 degree threshold. The shifting wind later in the day could allow for movement of the fire edge out of swamp shrub fuel into pine and southern rough where unburned fuels exist within the fireline. If this occurs expect fire behavior to increase.

**Initial Attack:** Hold over lightning fires and other ignitions will be fast to develop after a few hours of sun. Fire spread and spotting will be toward the south. Pine and southern rough fuels present the greatest threat for high to very high fire behavior.

**Air Operations:** Inversions will persist until 1000. Smoke will continue to limit visibility.

**Safety:** Potential for large fire growth indicates a need to reevaluate escape routes and safety zones. Burned over areas with needle cast may not be adequate any longer.

INCIDENT ACTION PLAN SAFETY ANALYSIS										1. Incident Name Georgia Bay Complex		2. Date 5/18/2007		3. Time Day & Night Shift				
LCES* Analysis of Tactical Applications Lookouts Communications Escape routes Safety zones										Other Risk Analysis								
Branch	Indirect Fireline	Burn out Operations	Power lines	Night operations	Frontal Assault	Anchor Points	Extreme Conditions	Reburn Potential	Unburned Area	Insects, snakes	LCES Mitigations	Smoke	Transportation, 1 Hrs+	Communications	Structure Protection	Fatigue/Hydration	Multi-aircraft	Other Risk Mitigations
Sweat Farm	1, 3, 4, 5, 7, 10	1, 3, 4, 5, 6, 10, 13	15, 16	1, 7, 11, 14, 19, 22, 34	1, 3, 4, 5, 7, 22, 29	7	1, 6, 7, 8, 10, 24	1, 3, 7, 9, 16	1, 3, 5, 7, 9, 16	1, 3, 5, 7, 9, 16	1. Establish & maintain LCES. Report LCES checks twice daily to DIVS on line & staging. 2. Look UP, DOWN and AROUND - Use protective spray with deet on skin (Not on Nomex), permethrin can be used on nomex clothing. Do Not try to catch or kill snakes! 3. Post experienced Lookouts. Make sure LCES is in place and make known. 4. Use Air Attack as Lookout.	1, 3, 4, 23, 27, 32, 33	12, 20, 26, 28, 31, 33	1, 23, 3, 10, 27, 14	3, 5, 11, 19, 23, 25, 26, 27, 21	18, 29, 30	18. Take plenty rest breaks and encourage to drink water NOW through briefings. 19. Watch out for complacency and fatigue. Utilize Fire Departments for structure protection. Tailgate briefings on WUI hazards. 20. Defensive driving will be addressed in all briefings. 21. All personnel must meet the 2:1 work/rest ratio. Line supervisors and Safety will monitor closely.	
	Fargo	1, 3, 4, 5, 7, 10	1, 3, 4, 5, 6, 7, 10, 13	15, 16	1, 7, 11, 14, 19, 22, 34	1, 3, 4, 5, 7, 22, 29	7	1, 6, 7, 8, 10, 24	1, 3, 7, 9, 16	1, 3, 5, 7, 9, 16	5. Flag escape routes on right side of escape route facing outward. Create new escape routes as you progress. Maintain LCES at all times. 6. Post lookout for Snags, Runs, and Spot Fires. 7. Use secure anchor points that will not be compromised for observed fire behavior. 8. FBA/Meteorologist develop weather watch system.	1, 3, 4, 23, 27, 32, 33	12, 20, 26, 28, 31, 33	1, 23, 3, 10, 27, 14	3, 5, 11, 19, 23, 25, 26, 27, 21	18, 29, 30	22. Line Supervisors will provide clear, concise briefings. 23. Recognize, Communicate & Avoid Hazmat situations. 24. Refer to the Evacuation Plan for the ICP. 25. Review Wildland Urban "Watch Out" situations. Pg 11 IRPG	
		IA Groups(ICP, Manor, Swil	1, 3, 4, 5, 7, 10	1, 3, 4, 5, 6, 7, 10, 13	15, 16	1, 7, 11, 14, 19, 22, 34	1, 3, 4, 5, 7, 22, 29	7	1, 6, 7, 8, 10, 24	1, 3, 7, 9, 16	1, 3, 5, 7, 9, 16	9. All Firefighters must review current weather, predicted weather & fire behavior forecast. 10. Keep Firefighters informed of any changes in predicted weather, consider at least a two day weather pattern when planning burnout operations. 11. Refer to IRPG, pg. 12 on Power Line Hazards. 12. Observe all traffic signals and speed limits.	1, 3, 4, 23, 27, 32, 33	12, 20, 26, 28, 31, 33	1, 23, 3, 10, 27, 14	3, 5, 11, 19, 23, 25, 26, 27, 21	18, 29, 30	26. Ensure Traffic Planning is safe and enforced. Heed Defensive Driving techniques noted in Safety Messages. 27. Avoid trash dumps in line construction & avoid smoke from dumps 28. Relocate staging area when driving conditions warrant. 29. Air Attack and/or lead plane will always be in the air to coordinate aircraft.
												13. Ensure any burnout operations have been clearly communicated to ALL, prior to burning. 14. Night Dispatch will be assign for each night operational period. 15. Scout ahead of tractor operations to avoid making contact with power poles and guide wires when tying into roads. Power companies are working in some DIVS, avoid all down lines as they may become charged. 16. Review IRPG pg. 75 when thunderstorms are predicted or observed.						30. Personnel on ground will stay out of drop zones. 31. Use spotter when backing vehicle(s). 32. Use bandanna to filter smoke in heavy smoke areas. 33. ALL vehicles and equipment must have lights on when running. Plastic colverts under some roads have burned and are collapsing under heavy loads, DIVS will coordinate which roads transport and tractors will use. GSP (912) 287-6500 : EMA (912) 287-4499. 34. Use blinking lights or glow sticks on back of helmet or backpack to be seen by equipment operators.

Prepared by (Name and Position)

ICS 215A Brian Beisel SOF1 (T)



## North Georgia Bay Complex (Group 1)

INCIDENT RADIO COMMUNICATIONS PLAN		1. Incident Name <b>Georgia Bay Complex</b>		2. Date/Time Prepared <b>5- 17 -2007</b>	3. Operational Period Date/Time <b>5- 18-2007</b>
4. BASIC RADIO CHANNEL UTILIZATION					
Radio Type/Cache	Channel	Function	Frequency/Tone	Assignment	Remarks
<b>King NIFC</b>	<b>1</b>	<b>Command Ware EMA Repeater</b>	<b>158.7825/162.2 153.7625/162.2 Narrow Band</b>	<b>Command Rpt</b>	<b>Sweat Farm</b>
<b>King NIFC</b>	<b>2</b>	<b>Okee North Repeater</b>	<b>164.575 /206.5 163.150 / 206.5 Narrow Band</b>	<b>Command Rpt</b>	<b>Big Turnaround ICP</b>
<b>King NIFC</b>	<b>3</b>	<b>GA Mutual Aid</b>	<b>154.280 154.280</b>	<b>Structural &amp; Tactical</b>	
<b>King NIFC</b>	<b>4</b>	<b>911 &amp; Structural Coordinator Rptr.</b>	<b>154.445/ 118.8 154.010/118.8</b>	<b>Emergency Traffic</b>	<b>This is a heavy traffic channel, use only for Emergency Traffic</b>
<b>King NIFC</b>	<b>5</b>	<b>Tactical</b>	<b>159.285 Rx &amp; Tx</b>	<b>Fargo Group 2</b>	<b>Southern COMPACT</b>
<b>King NIFC</b>	<b>6</b>	<b>Tactical</b>	<b>168.050 Rx &amp; Tx Narrow Band</b>	<b>Divs. E Divs. Y,Z,WB, WC</b>	<b>Fireline</b>
<b>King NIFC</b>	<b>7</b>	<b>Tactical</b>	<b>168.600 Rx &amp; Tx Narrow Band</b>	<b>Divs. G Divs. Swing/IA</b>	<b>Fireline</b>
<b>King NIFC</b>	<b>8</b>	<b>Tactical</b>	<b>164.1375 Rx &amp; Tx Narrow Band</b>	<b>Fargo Group 3 Divs. WA, EE,EF,EG,EH</b>	<b>Fireline</b>
<b>King NIFC</b>	<b>9</b>	<b>Tactical</b>	<b>168.775 Rx &amp; Tx Narrow Band</b>	<b>Divs. H Divs. EA,EB,EC,ED</b>	<b>Fireline</b>
<b>King NIFC</b>	<b>10</b>	<b>Tactical</b>	<b>169.900 Rx &amp; Tx Narrow Band</b>	<b>Divs. I, J, K Divs. E,AA,BB,CC,DD</b>	<b>Fireline Tie-in with the Red &amp; Blue Team</b>
<b>King NIFC</b>	<b>11</b>	<b>Tactical</b>	<b>168.200 Rx &amp; Tx Narrow Band</b>	<b>Divs.A,B,C,D ICP Group, Fargo Group 1, Manor DivWD,WE,WF,WG,WH</b>	<b>Fireline</b>
<b>King NIFC</b>	<b>12</b>	<b>Air to Ground</b>	<b>167.950 167.950/110.9 Narrow Band</b>	<b>Federal Air to Ground</b>	
<b>King NIFC</b>	<b>13</b>	<b>Air To Ground</b>	<b>159.390 Rx &amp; Tx</b>	<b>Georgia Air to Ground</b>	
<b>King NIFC</b>	<b>14</b>	<b>Air Guard</b>	<b>168.625 168.625/110.9 Narrow Band</b>	<b>Air Emergency Only</b>	<b>Air Emergency Only</b>
5. Prepared By (Communications Unit) <b>Carl Bridges/ COML</b>					





## South Georgia Bay Complex (Group 2)

INCIDENT RADIO COMMUNICATIONS PLAN		1. Incident Name <b>Georgia Bay Complex</b>		2. Date/Time Prepared <b>5- 16 -2007</b>	3. Operational Period Date/Time <b>5- 17-2007</b>
4. BASIC RADIO CHANNEL UTILIZATION					
Radio Type/Cache	Channel	Function	Frequency/Tone	Assignment	Remarks
<b>King NIFC</b>	<b>1</b>	<b>GFC Fargo Repeater</b>	<b>159.120/107.2 151.370/123.0</b>	<b>Command Rpt</b>	<b>Bugaboo Brush</b>
<b>King NIFC</b>	<b>2</b>	<b>Okee North Repeater</b>	<b>164.575 /206.5 163.150 / 206.5 Narrow Band</b>	<b>Command Rpt</b>	<b>Big Turnaround ICP</b>
<b>King NIFC</b>	<b>3</b>	<b>GA Mutual Aid</b>	<b>154.280 154.280</b>	<b>Structural &amp; Tactical</b>	
<b>King NIFC</b>	<b>4</b>	<b>911 &amp; Structural Coordinator Rptr.</b>	<b>154.445/ 118.8 154.010/118.8</b>	<b>Emergency Traffic</b>	<b>This is a heavy traffic channel, use only for Emergency Traffic</b>
<b>King NIFC</b>	<b>5</b>	<b>Tactical</b>	<b>159.285 Rx &amp; Tx</b>	<b>Fargo Group 2</b>	<b>Southern COMPACT</b>
<b>King NIFC</b>	<b>6</b>	<b>Tactical</b>	<b>168.050 Rx &amp; Tx Narrow Band</b>	<b>Divs. E Divs. Y,Z,WB, WC</b>	<b>Fireline</b>
<b>King NIFC</b>	<b>7</b>	<b>Tactical</b>	<b>168.600 Rx &amp; Tx Narrow Band</b>	<b>Divs. G Divs. Swing/IA</b>	<b>Fireline</b>
<b>King NIFC</b>	<b>8</b>	<b>Tactical</b>	<b>164.1375 Rx &amp; Tx Narrow Band</b>	<b>Fargo Group 3 Divs. WA, EE,EF,EG,EH</b>	<b>Fireline</b>
<b>King NIFC</b>	<b>9</b>	<b>Tactical</b>	<b>168.775 Rx &amp; Tx Narrow Band</b>	<b>Divs.H Divs. EA,EB,EC,ED</b>	<b>Fireline</b>
<b>King NIFC</b>	<b>10</b>	<b>Tactical</b>	<b>169.900 Rx &amp; Tx Narrow Band</b>	<b>Divs. I, J, K Divs. E,AA,BB,CC,DD</b>	<b>Fireline Tie-in with the Red &amp; Blue Team</b>
<b>King NIFC</b>	<b>11</b>	<b>Tactical</b>	<b>168.200 Rx &amp; Tx Narrow Band</b>	<b>Divs.A,B,C,D ICP Group, Fargo Group 1, Manor DivWD,WE,WF,WG,WH</b>	<b>Fireline</b>
<b>King NIFC</b>	<b>12</b>	<b>Air to Ground</b>	<b>167.950 167.950/110.9 Narrow Band</b>	<b>Federal Air to Ground</b>	
<b>King NIFC</b>	<b>13</b>	<b>Air To Ground</b>	<b>159.390 Rx &amp; Tx</b>	<b>Georgia Air to Ground</b>	
<b>King NIFC</b>	<b>14</b>	<b>Air Guard</b>	<b>168.625 168.625/110.9 Narrow Band</b>	<b>Air Emergency Only</b>	<b>Air Emergency Only</b>
5. Prepared By (Communications Unit) <b>Carl Bridges/ COML</b>					



<b>ICS-206 MEDICAL PLAN</b>	1. Incident Name <b>Georgia Bay Complex</b>	2. Date Prepared <b>5/17/07</b>	3. Time Prepared <b>18:00</b>	4. Operational Period <b>5/18/07 DAY &amp; NIGHT SHIFT</b>					
<b>5. Incident Medical Aid Station</b>									
Medical Aid Stations		Location				Paramedics			
						Yes	No		
Medical Unit Big Turnaround 912-496-4359	100 yards west of ICP in the double wide trailer					X			
Medical Unit Georgia Bay 912-218-9101	Georgia Forestry Headquarters ICP					X			
John (Steve) Spangler 540-320-4838	Assigned By DIVS – Big Turnaround – East Divisions				EMT				
<b>6. Transportation</b>									
<b>A. Ambulance Services</b>									
Name		Address		Phone		Paramedics			
						Yes	No		
Ware County EMS		Waycross Georgia (911 to activate)		912-281-9467 Linc 1*96*116		X			
Charlton Memorial EMS		1203 N Third St Folkston Ga (911 to activate)		888-255-4961 Linc 1*25*3468		X			
Fargo County EMS		Fargo (911 to activate)				X			
<b>Air Ambulance Service</b>									
Trauma 1		Jacksonville, FL (26 min/air)		1-800-223-4878		X			
AirMed		Augusta, GA (2 hrs/air)		888-792-9245		X			
Lifeflight		Jacksonville, FL (35 min/air)		877-870-7779		X			
<b>B. Incident Ambulances</b>									
Name		Location				Paramedics			
						Yes	No		
Ware County EMS		Waycross (Natl. Guard Armory - 718 Garlington Ave)				X			
Charlton EMS		Folkston				X			
Ware County EMS		Fargo (Fargo Unit – 41 First Street – Fargo, GA 31631)				X			
<b>7. Hospitals</b>									
Name		Address		Travel Time		Helipad		Burn Center	
				Air	Grnd	Phone		Yes	No
								Yes	No
Charlton Memorial		1203 N 3 <sup>rd</sup> St Folkston N30°50.54 W082°18.4		10 min	20 min.	912-496-2531		X	X
Satilla Regional		410 Darling Ave Waycross Ga N31°13.56 W82°21.058		15 min	30 min	912-283-3030		X	X
Shands Hospital (level I)		Jacksonville, FL N 30 20 97 W 82 13 992		45 min	1.5 hrs	800-223-4878		X	X
Memorial Hospital		Savannah, GA 4700 Waters 3200.7 8107.6		40 min		912-350-8999		X	X
Shands Burn Center		Gainesville, FL 29 38.33 N 082 20.73W		45 min		352-265-0300		X	X
Doctor's Hospital Joseph Still Burn Center		August,GA (Chief Burn Ctr 3328.943 8205.422		90 min	3 ½ hrs	877-863-9595 706-863-9595		X	X
<b>8. Medical Emergency Procedures</b>									
Identify any EMT's and Paramedics in your crews. All medical emergencies will be reported to the Division Supervisor who will assume command.									
<ol style="list-style-type: none"> <li>Provide medical care &amp; stabilize patient.</li> <li>Call 911</li> <li>Notify Communications via radio or cell phone (936)545-6198.</li> <li>Communications will clear radio traffic for medical emergency.</li> <li>Notify Dispatch, provide ONE on site contact person, notify dispatch if that changes.. <ul style="list-style-type: none"> <li>Provide location (road intersection, GPS coordinates).</li> <li>Number of patients</li> <li>Type of injury or illness – Is it life threatening? Provide vital signs if available.</li> <li>EMT's on scene and/or needed</li> <li>Type of transportation needed</li> </ul> </li> <li>Com will notify ambulance and coordinate with IC, SOF, MEDL</li> </ol>									
<p style="text-align: right;"><i>*CREW EMT'S (ALL LEVELS) WILL FUNCTION AT THE <u>BASIC LEVEL</u> UNLESS SPECIFICALLY ASSIGNED TO THE INCIDENT AS AN EMT SINGLE RESOURCE</i></p>									
Helibase – ICP Waycross: 31 07.23 X 82 15.23									
Helispots – Fargo Base Camp: 30 47 30.02 X 82 22 39.5 (4 mi mrker Hwy 177 – Stephen C. Foster St. Prk) H-114 and 30 41.739 X 82 33.961 (Hwy 441 - golf course) H-113									
9. Prepared by (Medical Unit Leader) <b>Susan Long (912) 218-9101 Linc 1*18*7480</b>					10. Reviewed by (Safety Officer) <b>Brian Beisel SOF (912)218-7726 Linc 1*18*4223</b>				

AIR OPERATIONS SUMMARY		PREPARED BY: P.J.Pearson			PREPARED DATE/TIME 5/17//07 1600	
1. INCIDENT NAME: Sweat Farm Road Fire		2. OPERATIONAL PERIOD: Day Shift 5/18//07		START TIME: 0700	END TIME: 2000	SUNRISE: 0634 SUNSET: 2018
3. REMARKS (Safety Notes, Hazards, Air Operations Special Equipment, etc.): High Towers in Area Look Up, Look Down, Look Around Waycross Helibase—31 14.95 X 82 23.73 Pogo Helibase-30 18.25 X 82 07.69 ICP Helibase 31 07.23 X 82 15.23 All dispatches will come through the ICP in Waycross for state aviation resources LOOK UP, LOOK DOWN, LOOK ALL AROUND				4. MEDEVAC A/C: N17HX—Pogo Helibase		5. TFR: In Place Radius: Rectangle to 3000 MSL_  Altitude: _3000= MSL NW corner Lat 31 09 02 Long 82 32 04 SE corner Lat 30 53 17 Long 82 02 48:
6. PERSONNEL	Phone	7. FREQUENCIES	AM	FM	8. FIXED-WING # Avail / Type/ Make-Model / FAA N# / Base(s)	
AOBD: P.J.Pearson 979-220-1217 AOBD: Ron Hollifield-Lake City		AIR/AIR FW:	122.575 122.825 122.925	167.950	Airtankers 00-Type I 20-Type I 22-Type I 09-Type II 10-Type II	
ATGS: L.Mars—Waycross O. Martin(T) Waycross J. Robinson--Waycross C.Cross-Lake City		AIR/AIR RW:	122.575		Leadplanes Lead B-2 ASM Lead 1-4 Base FAX #:	
State Aviation Lead Waycross Airport Mike Leverette		AIR/GROUND:	122.925	151.145	ATGS Aircraft 90K—Beach Baron—L. Mars w/ O.Martin (T) 01Q—Cessna 401—K. Walsh 82-Z—King Air—C.Cross Lake City	
ASGS: Jack Finley-Pogo Bob Yeager-Lake City		COMMAND:			Other Flight follow with Pogo Helibase or Waycross Helibase IA Air Attack for State--- Cessna 182's and CH-47 or UH 60's Bell 407-Chopper 7 IA for the Okefenokee is 38Y (Okee 6) Approved Helispots—Refer to Okefenokee NWR Despite Map One GNG Helicopter will remain at Waycross Airport for IA at all times	
HEBM: Lon Patterson (T)-- Waycross	979-220- 0522	COMMAND RPT	Rx:	Tx:		
ATB MGR:		DECK FREQ:				
HEBM: Tom Kennedy (TK) 912- 496-4415 HEBM: Mike O'Leary (POGO) 239- 450-2481 HEBM: Dave Langley 505-240-3649		TOLC FREQ:				
Pogo Helibase 912-496-4415 Waycross Dispatch 912-338-5982		FLIGHT FOLLOW		RX 164.625 TX 163.150 TONE 103.5		

<b>Fargo Helibase—(GolfCourse)</b> N 30 41 27.3 x W 82 34 02.0 <b>Stephen Foster SP (Pocket)</b> N30 47 32.2 x W82 22 39..6						<b>ALL AIRCRAFT Call Air Attack when entering TFR---</b> <b>Waycross Helibase will call Pogo as a back up!!!</b> <b>NOTE NEW HELIBASE LOCATIONS</b> <b>ALL FLIGHTS WILL BE CLEARED WITH AOB</b>
--	--	--	--	--	--	--

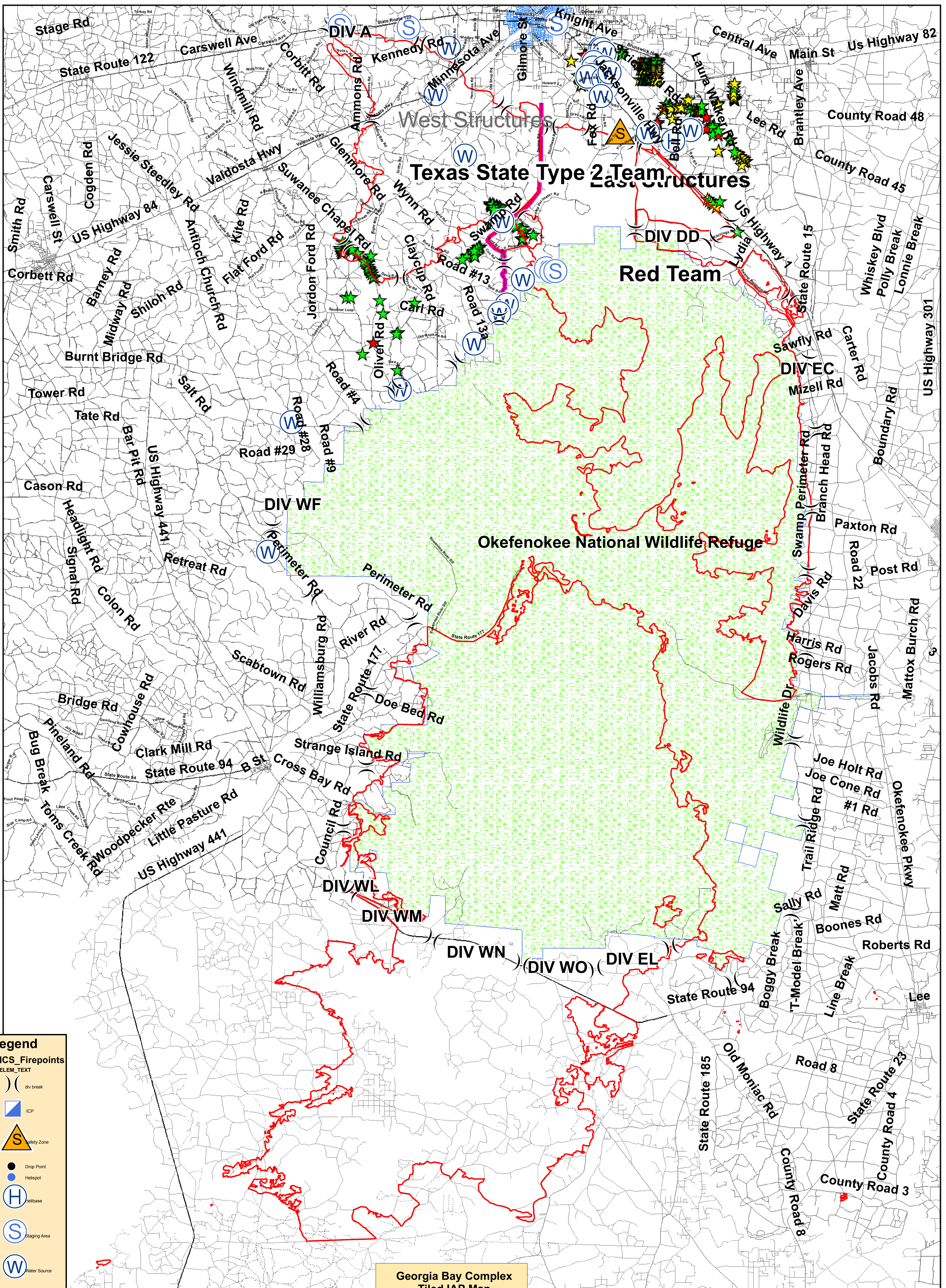
**9. HELICOPTERS (Use Additional Sheets As Necessary)**

FAA N#	TY	MAKE/MODEL	BASE	AVAIL	START	REMARKS	FAA N#	TY	MAKE/MODEL	BASE	AVAIL	START	REMARKS
N5BH	I	Sikorsky S-70A-27	Pogo	0900	0930	Bucket Drops	N5738Y	III	Bell 206	Pogo	0900	0930	Recon/ Admin/ IA
N4503E	I	Sikorsky S-61N	Pogo	0900	0930	Bucket drops	N12HX	III	Bell 407	Pogo	0900	0930	Admin/ Recon
N15HX	II	Bell 205++	Pogo	0900	0930	Bucket drops	Chopper 7	III	Bell 407	Waycross	0900	0930	State IA-Bucket drops as needed
N17HX II	II	BELL 205++	Pogo	0900	0930	Bucket Drops	90K	I	Baron	Waycross	0900	0930	ATGS
	I	UH-60	Waycross	0900	0930	IA for State	62-Z	I	King Air	Lake City	0800	0930	ATGS
	I	UH-60	Waycross	0900	0930	IA for State							
	I	CH-47	Waycross	0900	0930	IA for State							
01Q	i	Cessna 401	Waycross	0900	0930	ATGS							
		Cessna 182	Waycross	0900	0930	Aerial Detection							

**10. TASK/MISSION/ASSIGNMENT (Type/Function includes: Air Tactical, Retardant, Recon, Personnel Transport, Water Dropping, S&R, etc.)**

TYPE/FUNCTION	NAME OF PERSONNEL OR CARGO (if applicable) OR INSTRUCTIONS FOR TACTICAL AIRCRAFT	MISSION START	FLY FROM	FLY TO
Type II Helicopter	Operation and Logistic Support	0930	Helibase	Fire and Return
Type III Helicopter	Operation and Logistic Support	0930	Helibase	Fire and Return
Type I Helicopter	Operation and Logistic Support	0930	Helibase	Fire and Return
ATGS Platforms	Aerial Supervision of all Aircraft over Incidents	0930	Waycross Airport & Lake City	Fire and Return
State Detection Fixed Wing	Aerial Detection and IA for New Fire Starts	0930	Waycross Airport	Fire and Return



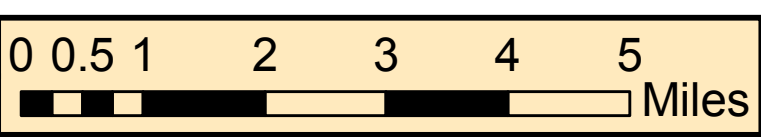


**Legend**

ICS Firepoints  
 ELEM\_TEXT  
 ( ) div break  
 ICP  
 Safety Zone  
 Drop Point  
 Helispot  
 Helibase  
 Staging Area  
 Water Source

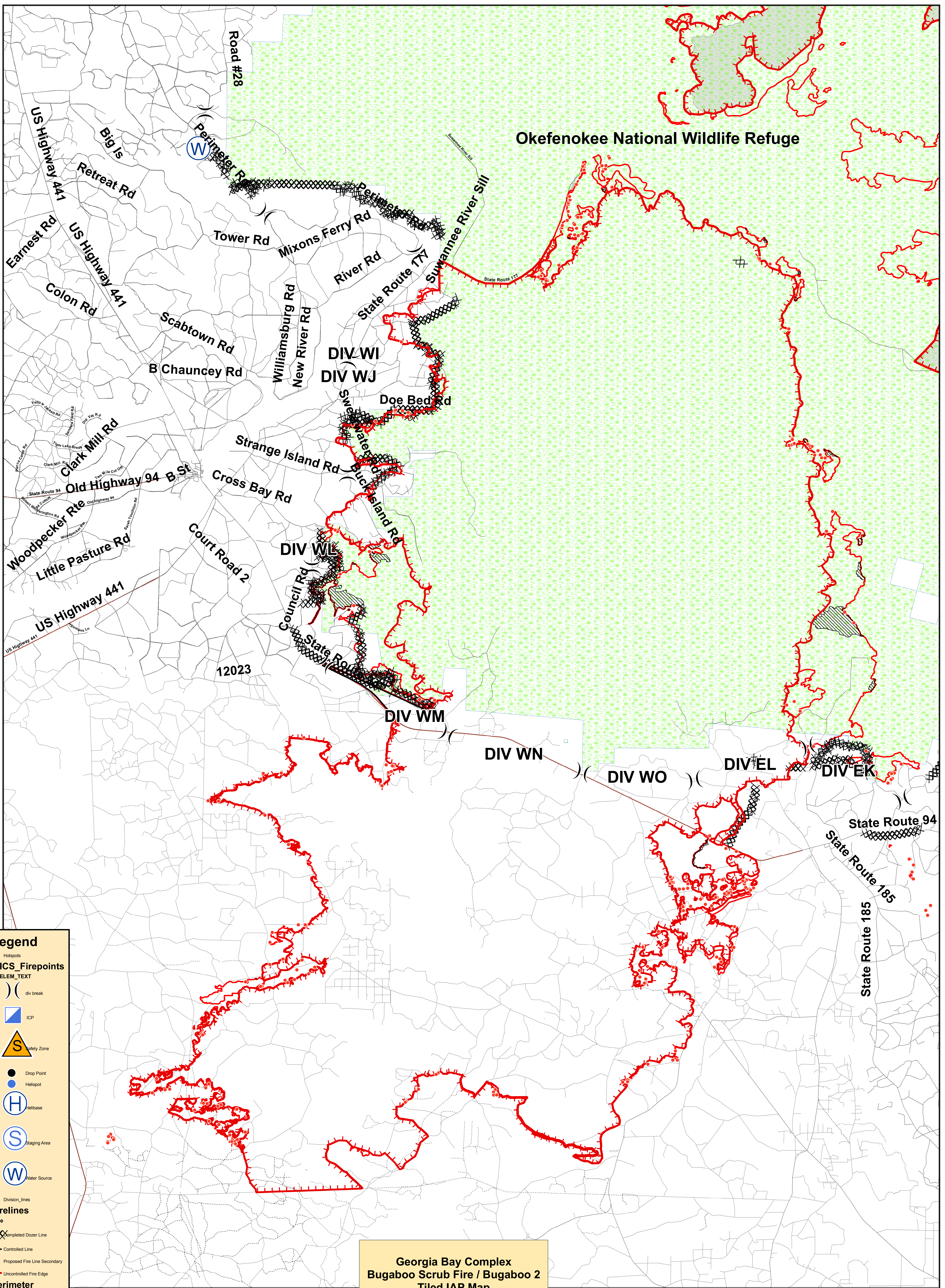
Division\_lines  
**Perimeter**  
 Fire\_Name  
 Big Turnaround  
 Bugaboo Scrub  
 Sweet Farm Road  
 Swamp Edge Break

Georgia Bay Complex  
 Tiled IAP Map  
 05-18-2007



Map By: Buster Robinson  
 May 17, 2007  
 Perimeter as of  
 May 17, 2007 1300





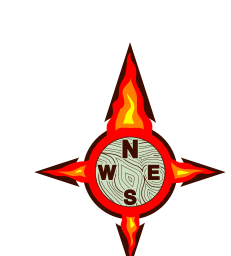
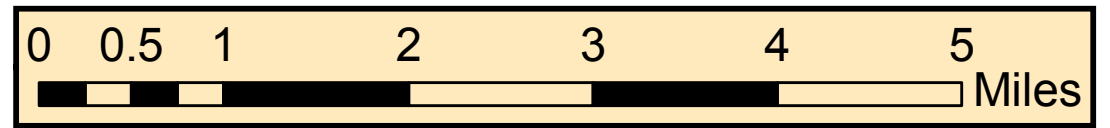
Okefenokee National Wildlife Refuge

Georgia Bay Complex  
 Bugaboo Scrub Fire / Bugaboo 2  
 Tiled IAP Map  
 05-18-2007

South Section

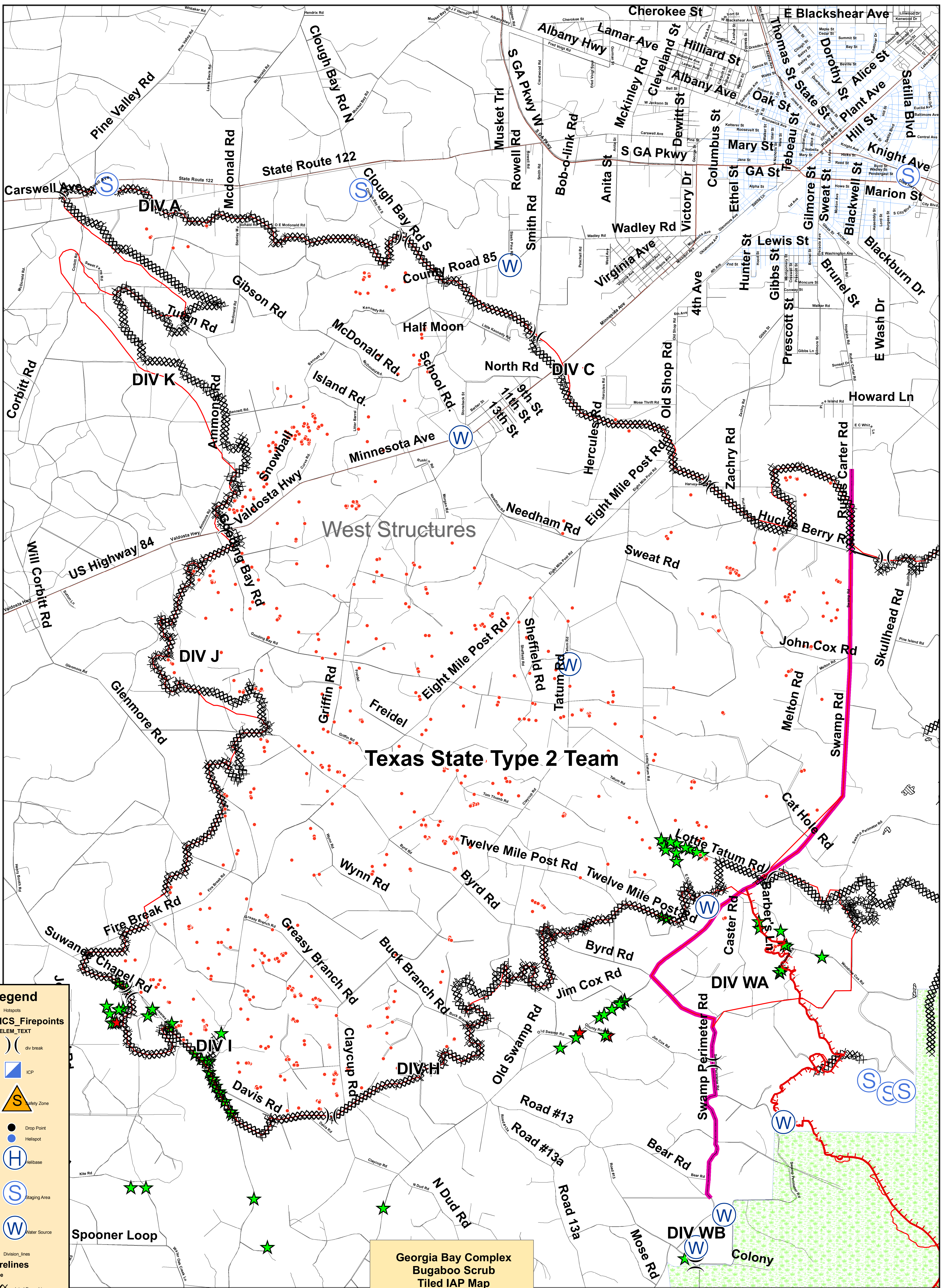
**Legend**

- Hotspots
- ICS\_Firepoints  
ELEM\_TEXT
- div break
- ICP
- Safety Zone
- Drop Point
- Helispot
- Helibase
- Staging Area
- Water Source
- Division\_lines
- Firelines  
Type
- Completed Dozer Line
- Controlled Line
- Proposed Fire Line Secondary
- Uncontrolled Fire Edge
- Perimeter  
Fire\_Name
- Big Turnaround
- Bugaboo 2
- Bugaboo Scrub
- Sweat Farm Road
- Swamp Edge Break
- Big Turn Around



Map By: Jim Pugh  
 May 17, 2007  
 Perimeter as of  
 May 17, 2007 1300



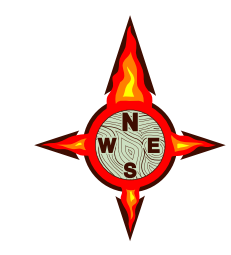
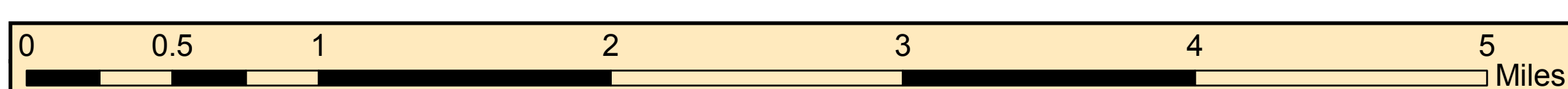


**Legend**

- Hotspots
- ICS Firepoints
- ELEM\_TEXT
- div break
- ICP
- Safety Zone
- Drop Point
- Helispot
- Helibase
- Staging Area
- Water Source
- Division Lines
- Firelines Type
  - Completed Dozer Line
  - Controlled Line
  - Proposed Fire Line Secondary
  - Uncontrolled Fire Edge
  - Perimeter
  - Swamp Edge Break

Georgia Bay Complex  
Bugaboo Scrub  
Tiled IAP Map  
05-17-2007

East Section

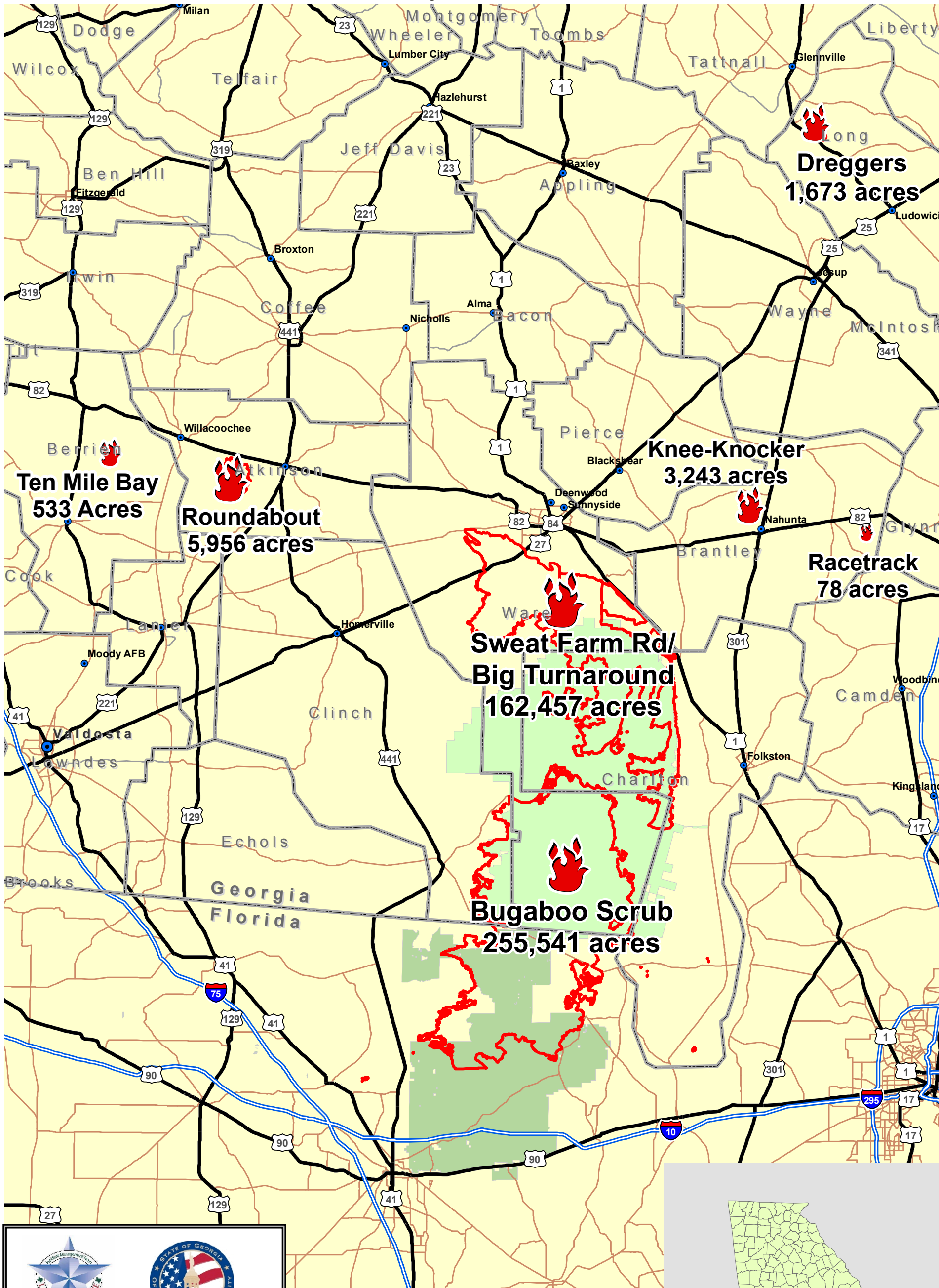


Map By: Jim Pugh  
May 17, 2007  
Perimeter as of  
May 17, 2007 1300



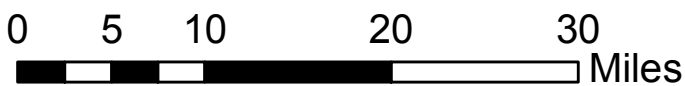
# Regional Wildfires - Southeast Georgia

May 18, 2007



TEXAS FOREST SERVICE  
 GEORGIA FORESTRY  
 Greater Okefenokee Association of Landowners

Map by Jim Pugh  
Perimeters Current as of 05/17/2007 1300 EDT



# Sweat Farm Road Phone Roster 5-18-07

NAME	POSITION	PHONE NUMBERS	LINC ID
<b>COMMAND &amp; GENERAL STAFF</b>		<b>912-285-6046</b>	<b>Fax 912-285-6014</b>
Paul Hannemann	IC	912-218-5108	18*11878
Billy Leitch	LOFR	912-218-9325	18*12022
Shawn Alexander	LOFR	912-218-9232	18*7378
Skippy Reeves	LOFR	912-2189359	18*12756
Warren Bielenberg	PIO	912-218-9319	18*11959
John Warner	PRTL	936-546-3164	
Donna Wilson	PRTM	540-797-6241	
Sandra Taylor	PRTM	936-546-3554	
Brian Beisel	SOF	912-218-7726	18*4203
Rodney Bell	SOF	912-218-7132	18*7132
Anthony Meadows	SOF	252-229-0161	
Glenn Bailey	SOF	918-465-6213	18*4451
Harry Kepler	SOF	912-218-8325	18*7145
John Orton	SOF	912-218-4958	18*4899
Larry Miller	SOF	912-218-9355	18*12622
Phil Spor	SOF	912-218-9215	18*11832
Tim Sampson	SOF		
Steve Snider	SOF	912-218-9308	18*11849
Ronnie Hamm	SOF 2	979-268-3782	
<b>OPERATIONS</b>		<b>912-285-6039</b>	
David Abernathy	OSC	912-218-5414	18*11904
Rich Gray	OSC	979-218-2406	18*11907
Bill Woodyard	OSC	912-218-9323	18*11981
Bill Bryant	OPBD	912-218-8343	18*4212
George Glenn	TFLD	706-551-2324	
Brendon McNeil	TFLD (t)	979-220-1406	
<b>Bob Habeck</b>	DIVS	912-218-9324	
Mike Appling	DIVS	912-218-9343	18*12314
<b>Heath Morton</b>	DIVS	912-218-7135	18*11946
Jeff Davis	DIVS	912-218-9320	18*11960
<b>Jim Davis</b>	DIVS	912-218-9307	18*10062
Mike Benefield	DIVS	912-218-8226	18*4523
<b>Nate Leising</b>	DIVS	912-218-9352	18*12520
<b>William Johnson</b>	DIVS	912-218-7132	18*11923
<b>David Zeigler</b>	DIVS (t)	936-546-3085	
<b>Rusty Smith</b>	DIVS (t)	936-546-3104	
<b>Jerome Harvey</b>	STPS		18*1608
Shane Crimm	STPS	912-218-9306	18*7065
William Neff	LE/Arson	912-287-4499	18*13485
Ron Baar	STEN		
Mark Stinson	STEN	512-940-7700	
Mike Purcell	STEN	706-237-0718	
BIG TURNAROUND OPS SEC		912-496-4173	
CSX RAIL ROAD OPERATIONS- Dixon		912-270-0699	
<b>AIR OPERATIONS</b>		<b>912-285-6039</b>	
<b>P.J. Pearson</b>	AOPD	979-220-1217	
<b>Lon Patterson</b>	HCMG	979-220-0522	
Don Mitchell	Air ASGS	912-218-9358	18*12670
TY Isbell	Air Ops	912-218-8937	18*6167
<b>FINANCE</b>		<b>912-285-6038</b>	
Jill Lipsey	FSC	979-218-3106	
Verma Coleman	FSC (t)	912-285-6052	
Barbara Hatch	Buying Team	912-285-9360	18*12765
Cathy Oliveras	Comp/Claims	912-285-6053	
Miguel Martinez	Comp/Claims	912-285-6052	
<b>Carolyne Riggs</b>	COST	912-285-6052	
<b>Stephanie Elledge</b>	EQTR(t)	936-546-3415	
<b>Penny Brown</b>	Procurement	912-285-6038	
<b>Karen Stripling</b>	PTRC	936-546-1153	

# Sweat Farm Road Phone Roster 5-18-07

NAME	POSITION	PHONE NUMBERS	LINC ID
<b>PLANNING</b>		<b>912-285-6046</b>	
Les Rogers	PSC	912-218-7586	18*6871
Chris Brenzel	SITL	760-822-2257	
Dan Ochocki	SITL	970-903-1957	
Brian Pope	SITL(t)	936-546-3164	
Russell Lykins	SITL(t)	936-546-1616	
Richard Gibbs	RESL	979-220-0577	
Wes Moorehead	RESL(t)	936-546-1642	
Rusty Brown	CTSP	479-973-6231 (P)	
Brad Smith	FBAN	979-220-1389	
Doug Williams	FOBS	912-218-9316	18*11828
Gary White	FOBS	912-218-9358	18*12670
Kevin Winter	GISS	912-285-6052	
Buster Robinson	GISS	936-546-8783	
John Quagliariello	IMET	912-218-9309	18*10247
Rich Dottellis	DOCL	936-546-3138	
Carl Lunggrin	DMOB	912-218-9361	18*12771
Scott Corley	SCKN		
Jason Keiningham	SCKN(t)	979-218-3108	
Shawn Whitley	SCKN(t)	936-545-7184	
David Hicks	IRIN	541-554-0143	
Dennis Evans	THSP	912-218-8325	18*7145
Lewis Kerney	TNSP	423-650-3006	
<b>LOGISTICS</b>		<b>912-285-6091 Fax 912-285-6111</b>	
Susan Cornett	LSC	936-546-1952	
Ted Grisey	LSC @ FARGO	912-218-9356	
Carl Bridges	COML	936-545-6198	
Susan Long	MEDL	912-218-9101	18*7480
Roger Atkinson	SECM	479-970-3038	
Tony Bolton	SECL	601-405-9027	
Wayne Garmen	BCMG	912-218-9141	18*11862
Kevin Pierce	BCMG(t)	936-546-1523	
Stephen Kelley	BCMG (FARGO)	912-218-9360	18*12765
Chuck Barber	Camp Crew Manager	912-218-9342	18*12299
Georgia State Patrol	Dispatcher	912-287-6500	
Michelle Sanchez	EQPM	912-218-9308	18*10090
Keith Skinner	EQPM	936-546-8133	
Jimmy Caldwell	FAC	912-218-9215	18*11832
Terry Seward	FDUL	912-218-9321	18*11964
William Lee	Fuel Truck	912-218-9017	18*6682
Guy Gillispe	Ground Support	912-218-7103	18*6748
Mike Summers	GSUL	936-546-1957	
John Wall	Hotel Manger	912-218-9354	18*12616
Sussie Burford	IADP	936-546-3071	
Terry Lemmon	ORDM	936-546-1953	
Daniel Wilson	RCDM	936-546-1729	
Todd Nightengale	STAM (FARGO)	936-546-3163	
Larry Bennett	SUPL	936-546-1732	
Steve Moore	FARGO	912-218-9344	18*12374
Bobby Weaver	THSP	936-546-8010	
John Rush	THSP	936-546-1883	
Larry Brown	GDC	912-218-9366	11*32283
Don Shugart	GDC	912-218-9371	11*32063
Sylvester Hall	GDC	912-218-9367	11*32054
Tommy Maddox	GDC	912-218-9374	11*32069
<b>MISC.</b>			
<b>COMMAND DISPATCH</b>		<b>912-218-9044</b>	<b>18*6870</b>
<b>PUBLIC INFORMATION</b>		<b>912-218-9319</b>	<b>18*11959</b>
<b>WAYCROSS DISTRICT OFFICE</b>		<b>912-218-7695</b>	<b>18*11671</b>
<b>MACON DISPATCH</b>		<b>912-218-9232</b>	<b>18*7378</b>
<b>RED TEAM</b>		<b>912-496-4173</b>	
<b>BLUE TEAM</b>		<b>386-719-2748</b>	<b>Fax 386-719-2740</b>
<b>MOP UP COMMAND</b>			<b>18*4918</b>

FARGO BASE		912-218-8907	18*7532
------------	--	--------------	---------

# OTHER INCIDENT MANAGEMENT TEAMS

## SOUTHERN RED TEAM: BIG TURNAROUND Phone Roster 5-18-07

NAME	PHONE NUMBERS		
COMMAND STAFF	912-496-4177		
PLANNING	912-496-4173		
OPERATIONS	912-496-4132		
AIR OPERATIONS	912-496-4415		
FINANCE	912-496-4102		
LOGISTICS	912-816-5749		
EXPANDED DISPATCH	912-496-3162		
COMMUNICATIONS	912-496-2111		

### Big Turnaround Command Staff

Mark Ruggiero	ICT1	850-766-4398	912-496-4177
Mary Bell Lunsford	PIO1	404-354-3943	912-496-4176
Heather Callahan	PIO	850-559-6854	912-496-4176
Larry Richardson	PIO	239-253-6805	912-496-4176
Terry McDonald	PIO	423-596-0828	912-496-4176
Haven Cook	PIO	404-354-5027	912-496-4176
John Walker	SOF1	601-416-4687	912-496-4181
John Daly	SOF2	904-315-1013	
Larry Holsomback	SOF2	706-280-4716	

### Big Turnaround Operations Section

Bobby Kitchens	OSC1/Planning	334-488-4378	912-496-4132
Jim Durrwatcher	OSC1	850-766-1254	912-496-4132
Greg Chandler	OSC1	541-840-6720	
Mike Dueitt	OSC1	601-497-0608	912-496-4132
Mark Jamieson	OSC1	985-285-3619	
Louie Casaus	OSC2	404-354-4793	
Dennis Hackett	DIVS	352-279-6977	
Ed Boynton	DIVS	775-296-0467	
George Bukenhoffer	DIVS	404-375-2360	
Jay Northcott	DIVS	505-430-1130	
Kyle Smith	DIVS	864-429-6059	
Mike Cook	DIVS	205-272-2426	
Pete Myers	DIVS	386-867-2394	
Steve Guckian	DIVS	352-279-4784	
Wayne Ichiyasu	STEN	303-589-3433	
Daniel Duncum	STLD	936-546-3143	
Greg Jackson	TFLD	775-721-2638	
Ron Graham	TFLD	505-756-4402	

## SOUTHERN BLUE TEAM: FLORIDA BUGABOO Phone Roster 5-18-07

NAME	PHONE NUMBERS		
INFORMATION	386-719-2739		
OPERATIONS	386-719-2743		
COMMUNICATIONS	386-719-2748		
FLORIDA INTERAGENCY COORDINATION	850-580-6885		

### Florida Bugaboo Operations Section

Danny Bryant	OSC1	601-209-2866	
James Isaacs	DIVS	304-406-1704	
Jeff Koenig	DIVS	540-622-0431	
Larry Lockett	DIVS	770-718-7064	
Dave Martin	DIVS (t)	423-584-2808	
Steven Parrish	DIVS	850-524-1244	
Greg Sanders	DIVS	540-529-3376	
Glen Stratton	DIVS	321-403-7638	
Steven Parrish	DIVS	850-524-1244	

## IMPORTANT FINANCE INFORMATION

ALL CREW TIME REPORTS AND EMERGENCY EQUIPMENT SHIFT TICKETS SHOULD BE TURNED IN TO FINANCE AT THE END OF EACH SHIFT ON A DAILY BASIS. SUPERVISORS SIGNING THESE TIME REPORTS SHOULD ENSURE THE FOLLOWING:

- **PLEASE WRITE THE FIRE NAME YOU ARE WORKING ON YOUR CTR'S AND/OR SHIFT TICKETS – THIS IS VERY IMPORTANT FOR FEMA REIMBURSEMENT.**
- **THE “O” NUMBER SHOULD BE LISTED ON THE CREW TIME REPORT**
- **COMPLETE 1 (one) CREW TIME REPORT FOR EACH PERSON WITH AN “O” NUMBER**
- **“E” NUMBERS SHOULD BE LISTED ON THE EMERGENCY EQUIPMENT SHIFT TICKET(S)**
- **CORRECT DATES ARE IMPERATIVE!**
- **SUPERVISORS – PLEASE REVIEW THE CTR'S/SHIFT TICKET'S YOU ARE ASKED TO SIGN**

## Human Resources Message

**The people here will soon forget what we said,**

**Later, forget what we did, but**

**They will NEVER forget how we made them feel!**

### **REMEMBER**

- *Teamwork*
- *Cooperation*
- *Mutual Respect*
- *Communication*



**DID YOU KNOW? The winter of 1932 was so cold that  
Niagara Falls froze completely solid!**



